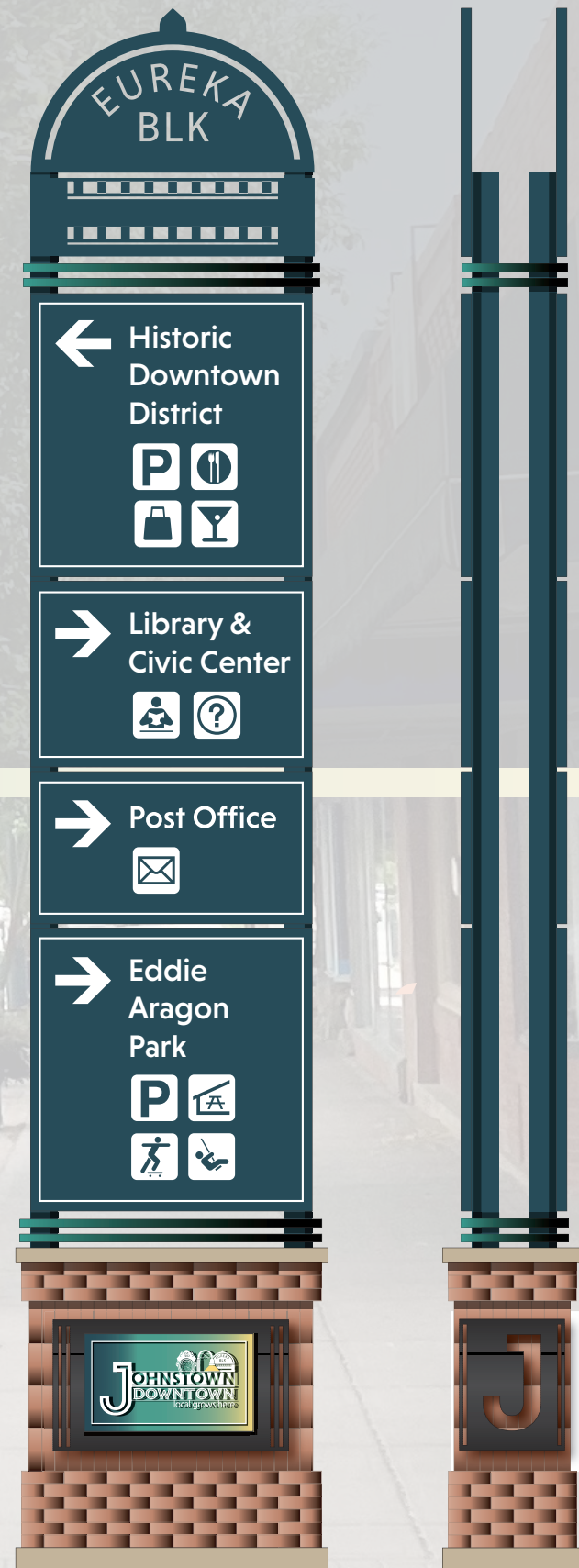


DOWNTOWN JOHNSTOWN

Wayfinding Plan Phase 1

May 2023



Downtown Johnstown Signage & Wayfinding Master Plan Phase 1

TABLE OF CONTENTS

Purpose of the Signage & Wayfinding Master Plan

Project Context & Background

- 01 Phase 1 Signage & Wayfinding Quantity/Type Overview
- 02 Messaging & Location Plan

Signage Designs

- 03 Phase 1 Signage Designs
- 04 Construction Specifications

Exhibits

- 05 Color, Typography & Artwork

A street scene in Johnstown, Pennsylvania, featuring a 'WELCOME' banner on a lamppost, a clock tower, and cars on the road.

Purpose & Goals of the Signage & Wayfinding Plan Master Plan

- Help direct residents and visitors to destinations within Downtown Johnstown
- Identify the style, quantity and type of signage needed in Downtown Johnstown
- Outline the costs and resources needed to implement the new branding, signage & wayfinding designs

01

Phase 1 Signage & Wayfinding Quantity/Type Overview

DOWNTOWN JOHNSTOWN SIGNAGE QUANTITIES BY SIGN TYPE - PHASE 1

SIGN TYPE	SIGNAGE FUNCTION	INSTALLATION SURFACE: Soft Surface (grass, dirt)/Hard Surface (concrete, paver) Installation	INSTALLATION TYPE: Freestanding/ Mounted to Existing Structure	Electrified (YES/NO)	Quantity
TOTAL PHASE 1 Signage					
Columnar Gateway - G1 ●	To announce arrival in the historic Downtown Johnstown district along Highway 60 and Parish Ave.	Soft	Freestanding	YES	1
Cruved Corner Gateway - G2 ●	To announce arrival in the historic Downtown Johnstown district along Parish Ave & improve plaza	Hard (requires removals)	(could potentially use existing wall foundations)	YES	1
Sculptural "J" Gateway - G2 ●	To announce arrival in the historic Downtown Johnstown district along Parish Ave & improve plaza	Hard	Freestanding	YES	1
Pedestrian Kiosk - P2 ●	To provide pedestrian directional information & general information about Downtown Johnstown	Hard	Freestanding	YES	1
TOTALS for all PHASE 1 signage					4

02

Messaging & Location Plan

MESSAGING PLAN - DOWNTOWN JOHNSTOWN DESTINATIONS & AMENITIES

Destinations form the backbone of a community signage & wayfinding system. Creating a list of special places and amenities tells a story about community character and values, and helps to attract visitors to unique and memorable places. During the signage & wayfinding plan outreach events, stakeholder participants were asked about the destinations within/around Downtown Johnstown that should be referenced with the new signage. The maps and the listed categories on the outreach materials were used to help encourage stakeholders to share what they would like the new signage to highlight and direct visitors to (using sticky notes and dots to locate and name destinations & amenities). The following are the top destinations residents and visitors would like the new signage & wayfinding to highlight:

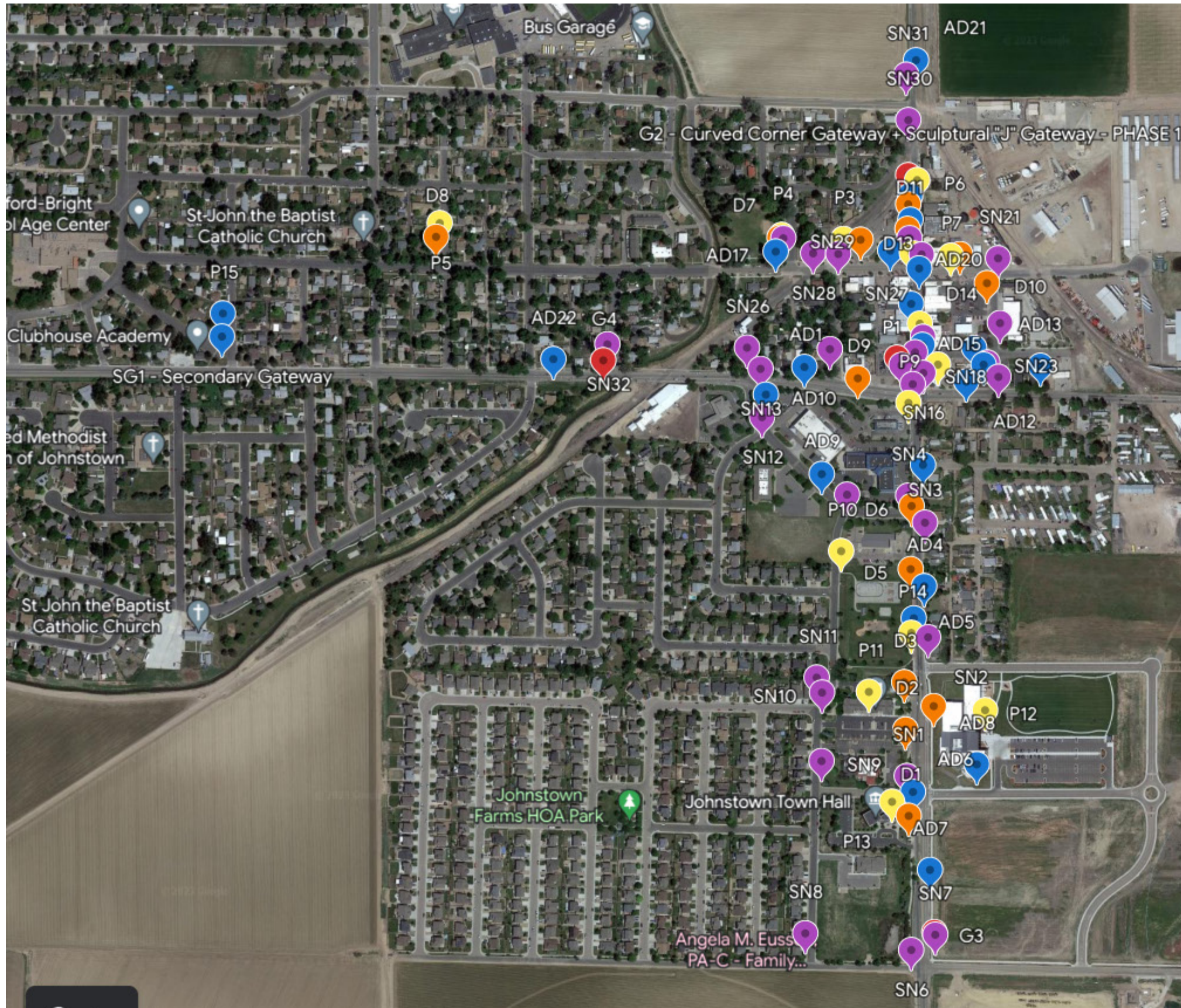
Phase 1 Signage Destinations

- Public Parking
- Town Hall
- Public Library
- Parish Park
- Parish House & Museum
- YMCA
- Post Office
- Eddie Aragon Park
- Historic Downtown




Helping point residents and visitors to community destinations like Parish Park will help highlight important community amenities in and around Downtown Johnstown

PHASE 1 SIGNAGE LOCATION & MESSAGING PLAN



Google Earth Messaging Plan Link:



<https://earth.google.com/earth/d/1mzU4M7ViiedjZ6MODnMMIsZH-NxSIRuH?usp=sharing>

Phase 1 Signage

- G1 Columnar Gateway (RED) ●
- G2 Curved Corner Gateway (RED) ●
- G2 Sculptural "J" Gateway (RED) ●
- P2 Pedestrian Kiosk (YELLOW) ●

03

Phase 1 Signage & Wayfinding Designs

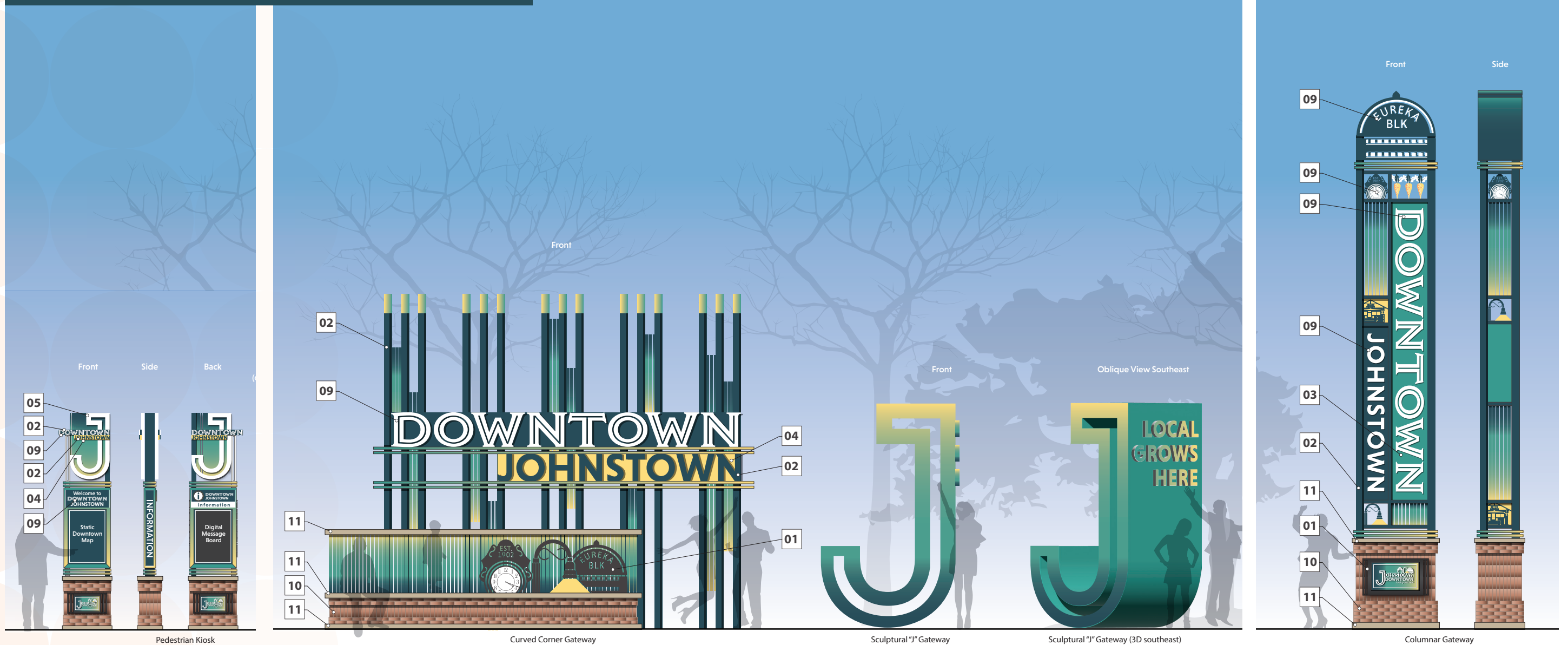
SIGNAGE & WAYFINDING DESIGN OVERVIEW

The final signage and wayfinding designs include a **total of 4 unique sign types** that create a sense of arrival into Downtown Johnstown, and start to create a cohesive and easy-to-follow wayfinding system for the historic downtown area.

The overall design is grounded in the new Downtown Johnstown brand, which incorporates several iconic downtown elements, including a historic building architectural feature, a representation of the unique downtown light fixture, and a historic themed clock that marks the time when the notable meteor landed in the Johnstown community.

For each sign type, a variety of informational panels are designed to help direct drivers, pedestrians, and bicyclists to various downtown destinations and experiences. To reduce costs and increase durability, written information is direct printed where possible, with auto directional information having reflective text that will be illuminated by auto headlights at night.

Phase 1 Signage & Wayfinding (4 sign types):



COMPLETE SIGNAGE FAMILY - DAY



Linear Gateway

Columnar Gateway

COMPLETE SIGNAGE FAMILY - DAY



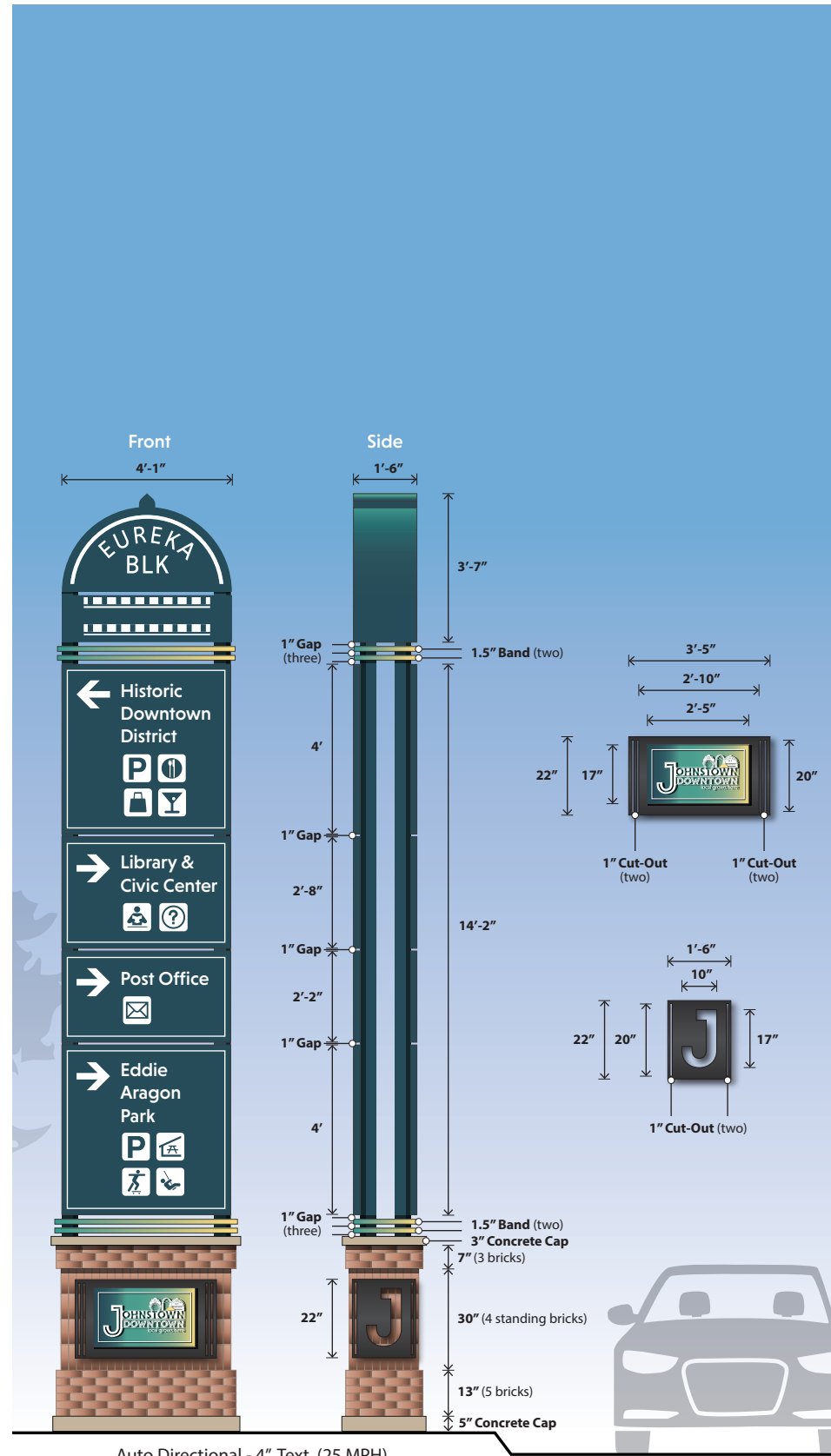
Curved Corner Gateway

Sculptural "J" Gateway

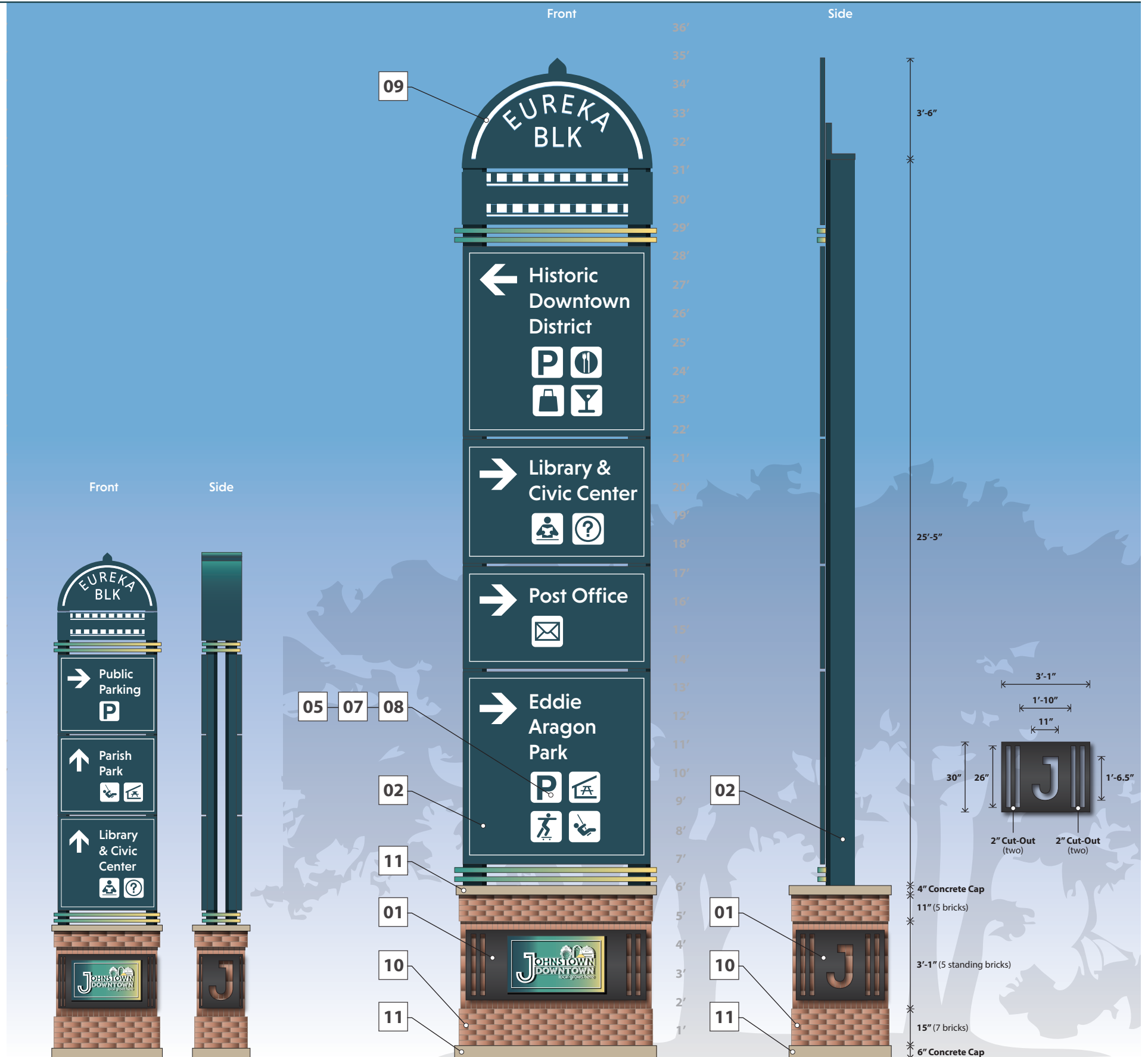
Sculptural "J" Gateway (3D southeast)

Sculptural "J" Gateway (3D southwest)

COMPLETE SIGNAGE FAMILY - DAY



Auto Directional - 4" Text (25 MPH)



Auto Directional Downtown - 4" Text (25 MPH)

Auto Directional - 6" Text (>35 MPH)

COMPLETE SIGNAGE FAMILY - DAY



Street Name Sign (new sign blade cuffs added to existing signs)

Building-Mounted Interpretive Signs

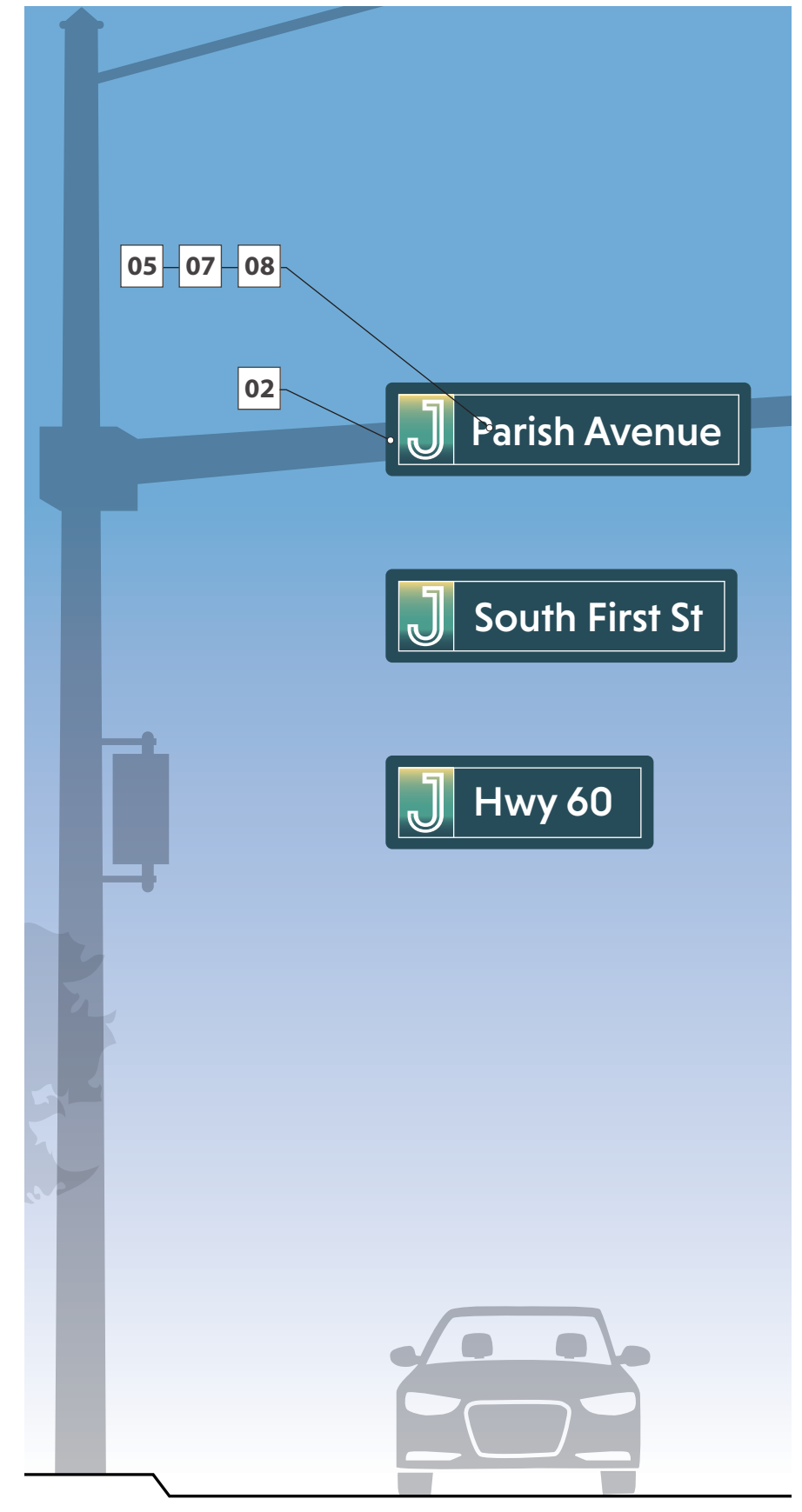
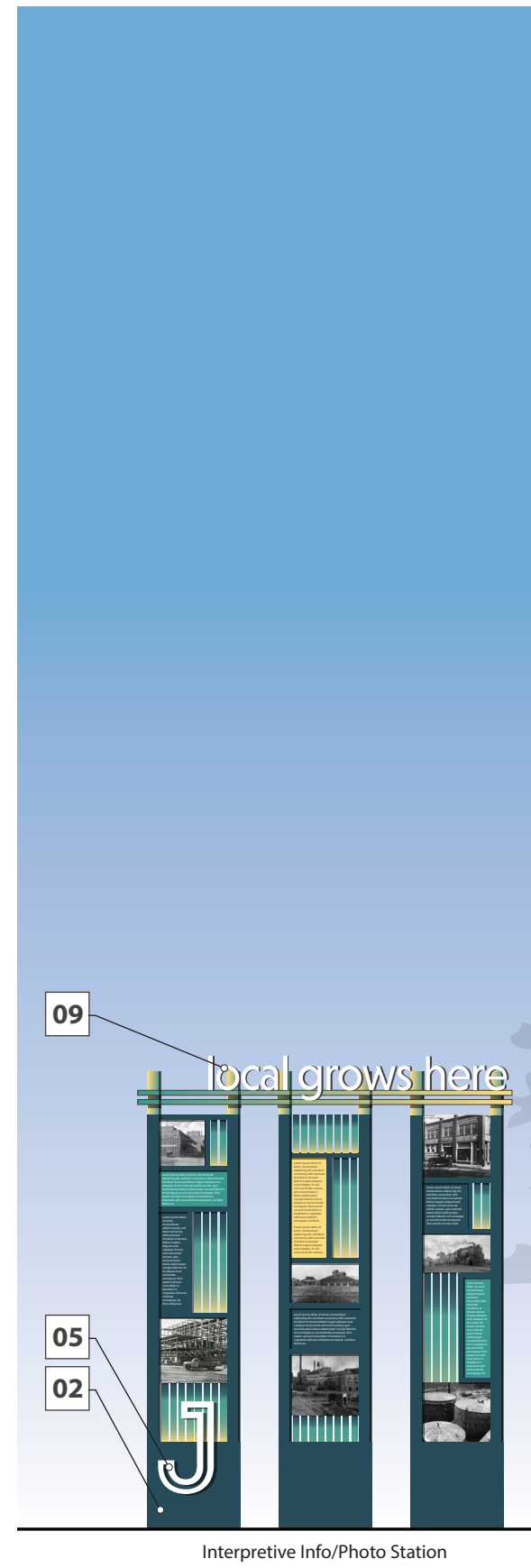
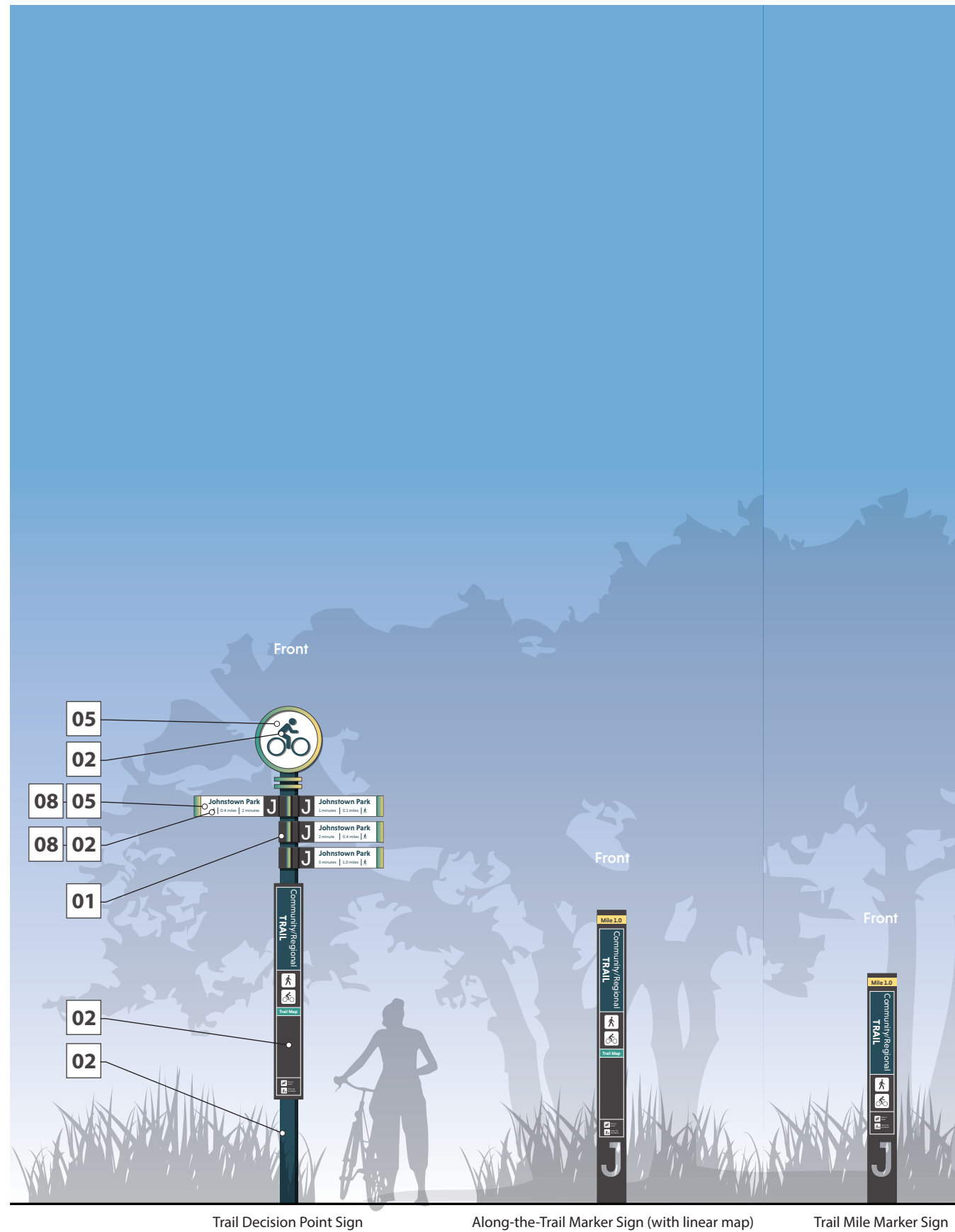
Destination Signage

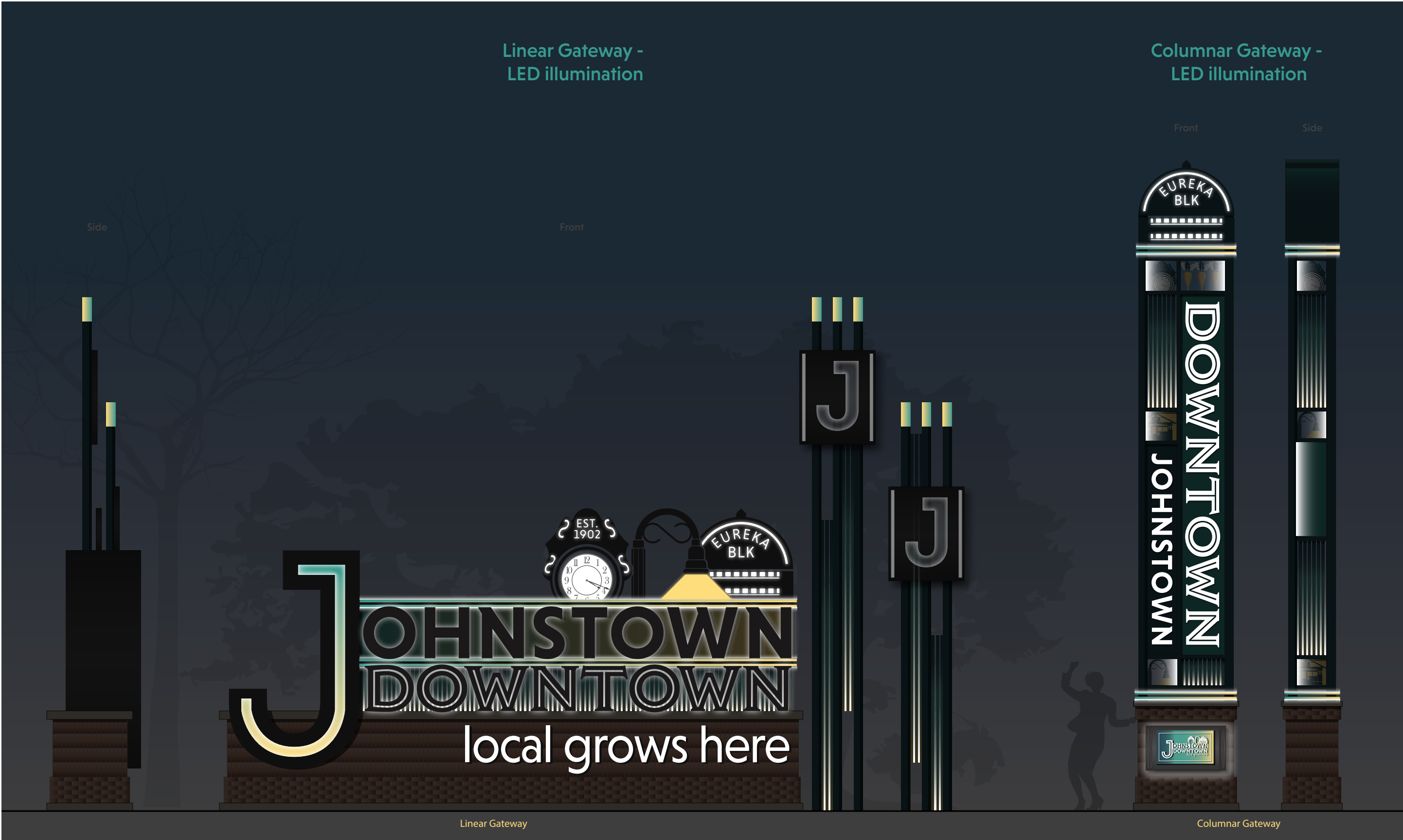
Pedestrian Directional

Pedestrian Kiosk

Public Parking (25 MPH)

COMPLETE SIGNAGE FAMILY - DAY





Linear Gateway

Columnar Gateway

Curved Corner Gateway -
LED illumination

Sculptural "J" Gateway
LED illumination

Front

Front

Oblique View Southeast

Oblique View Southwest



Curved Corner Gateway

Sculptural "J" Gateway

Sculptural "J" Gateway (3D southeast)

Sculptural "J" Gateway (3D southwest)

COMPLETE SIGNAGE FAMILY - NIGHT

Auto Directional Signs - LED illumination & retroreflective lettering & messaging





Street Name Signs - Retroreflective only



1
 Lorem ipsum dolor sit amet, consectetur adipiscing elit, sed diam nonummy nibh euismod tincidunt ut laoreet dolore magna aliquam erat volutpat. Ut wisi enim ad minim veniam, quis nostrud exerci tation ullamcorper suscipit lobortis nisl ut aliquip ex ea commodo consequat. Duis autem vel eum irure dolor in hendrerit in vulputate velit esse molestie consequat, vel illum dolore eu

Destination Signs - LED illumination & retroreflective lettering & messaging



Destination Signage

Pedestrian Directional - LED illumination & retroreflective lettering & messaging

Front Side



Pedestrian Directional

Pedestrian Kiosk - LED illumination & retroreflective lettering & messaging

Front Side Back Back (directional option)



Pedestrian Kiosk

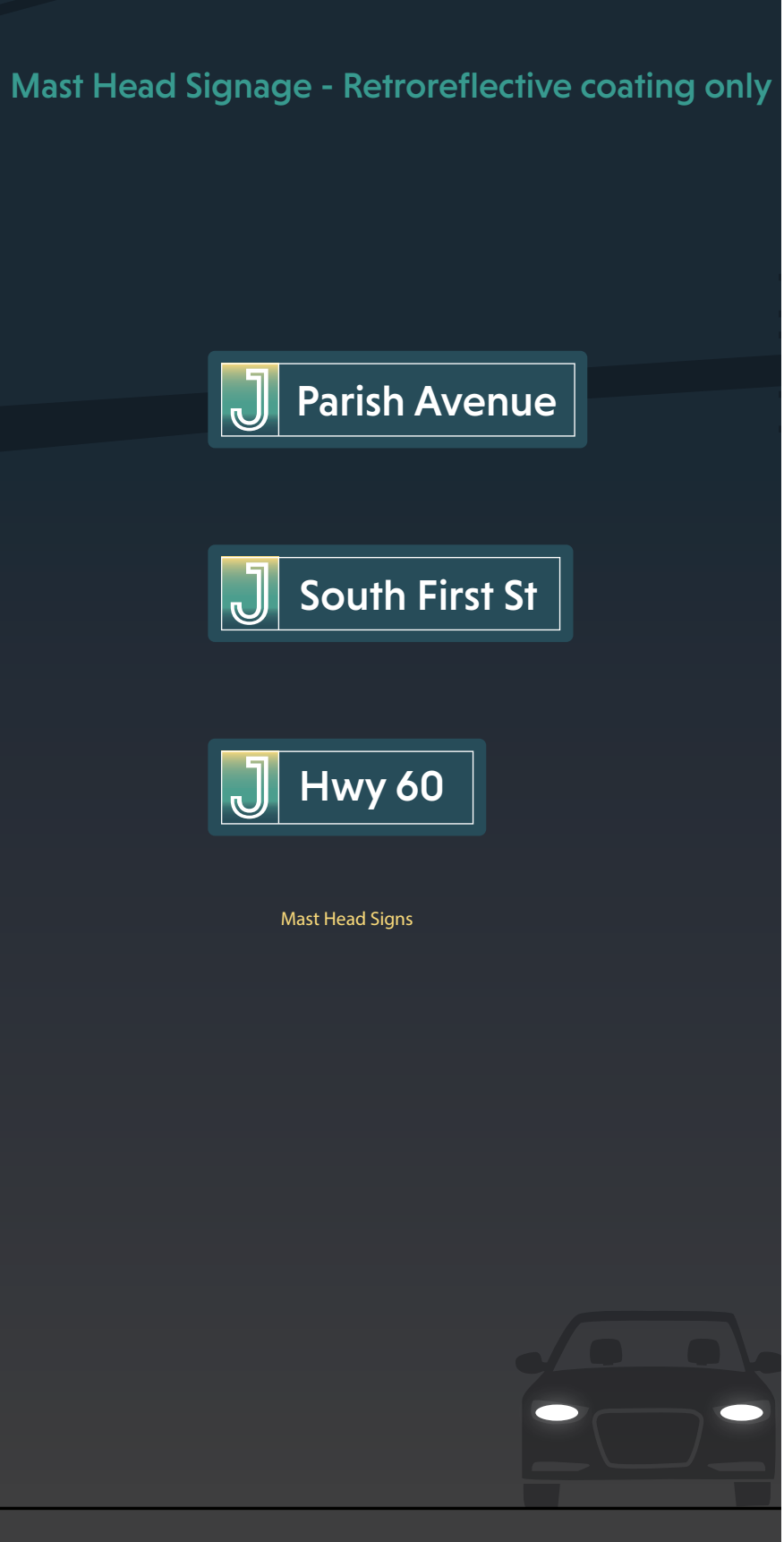
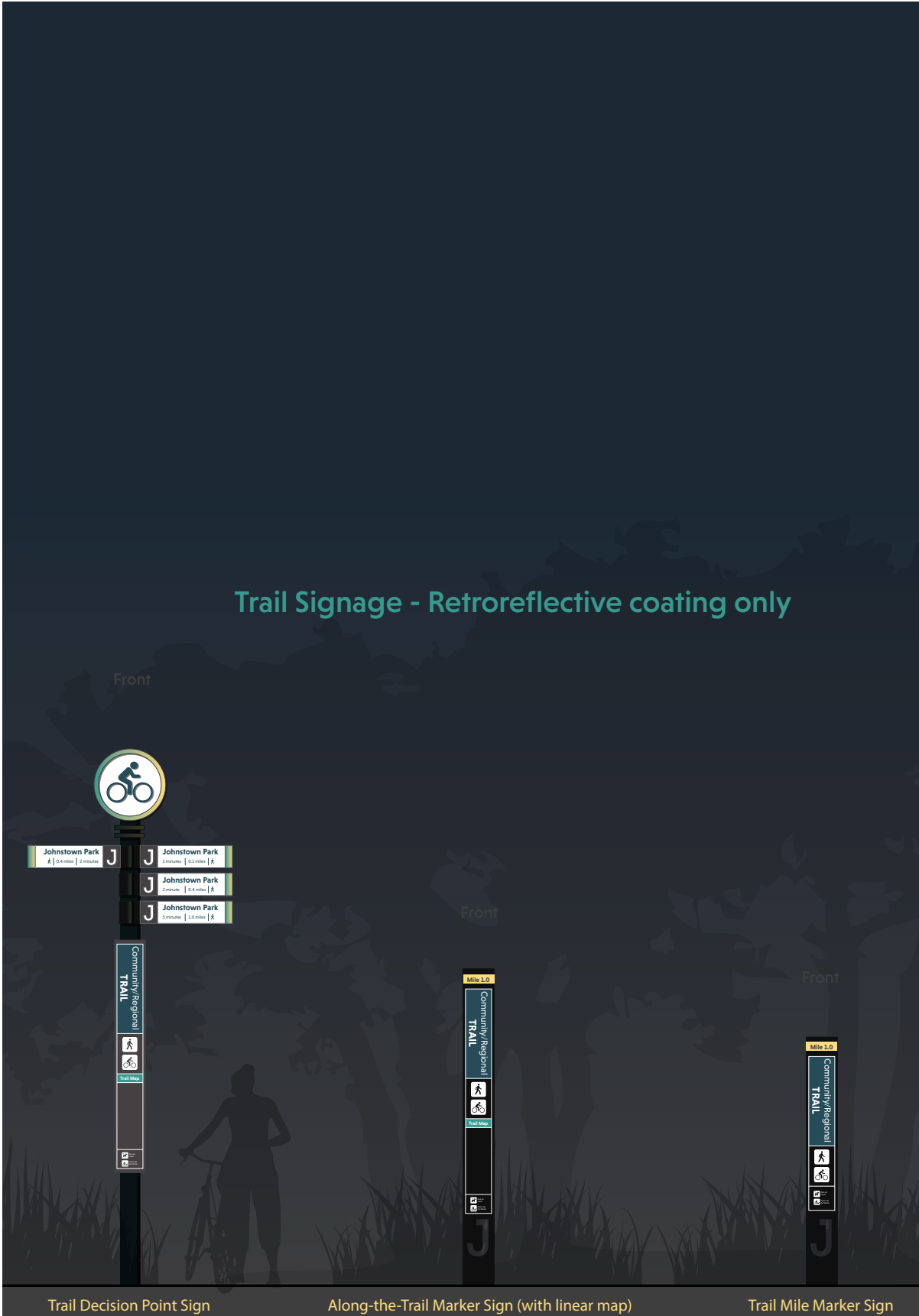
Parking Signs - LED illumination & retroreflective lettering & messaging



Public Parking (25 MPH)

Building-Mounted Interpretive Signs

COMPLETE SIGNAGE FAMILY - NIGHT



04

Construction Specifications

FABRICATION SPECIFICATIONS

A. Quality Standards

The materials, products, equipment and performance specifications described within, establish a standard of required function, dimension, appearance, performance and quality to be met by the Fabricator.

B. Structural Design

Details on design intent drawings indicate a design approach for sign structure but do not necessarily include all fabrication details required for the complete structural integrity of the signs, including consideration for static, dynamic and erection loads during handling, erecting, and service at the installed locations, nor do they necessarily consider the preferred shop practices of the individual Fabricators. Therefore, it shall be the responsibility of the Fabricator to perform the complete structural design and engineering of the signs and to incorporate all the safety features necessary to adequately support the sign for its intended use and purpose and to protect the Owner. Fabricator shall also be responsible for ensuring that all signs meet local, state and federal codes. The fabricator shall check with the Town of Johnstown regarding the final needed code standards. Any deviations from the from the specifications in this chapter or the design drawings must be agreed upon by the Town prior to finalization.

C. Vandalism Design

Fabrication and installation design is to withstand severe abuse and souvenir theft vandalism, but not less than the equivalent of resisting simple hand implements and tools (screwdrivers, knives, coins, keys, and similar items), and adult physical force. All hardware and fasteners within reach shall be vandal resistant.

D. Substitution

No substitution will be considered unless the Owner has received written request for approval.

E. Pre-Fabrication Submittals

The awarded fabricator must submit a copy of the following items to the Owner and Designer for their review prior to fabrication proceeding:

1. Detailed engineered shop drawings for each sign type are to be submitted as electronic PDF to scale on a sheet size not smaller than 11" x 17" (draft) and ARCH D 24" x 36" (final). Final Shop Drawings are to be stamped by an Engineer licensed in the state of the project. The shop drawings for each sign type shall illustrate/ describe the following:

- Elevations and cross sections – front, sides, top and back (if necessary); side sections; internal structure section/details; enlarged details such as of extrusions, dimensional letter mounting, mounting plate, etc.; with all final dimensions and call-outs for:
- Components – construction details/information related to individual elements
- Materials – color, type, gauge, and thickness (including substrates and overlays)
- Finishes – color, type of product, manufacturer, and sheen
- Fonts, graphics specifications and message fields
- Exploded view (optional) – isometric view with components, materials, and finishes.
- Cross-section of corners – one illustration for each corner condition. Items to be illustrated: seams, joints, layers, internal support and fasteners.
- Fabricator will subcontract with glass artist or glass manufacturer to cut and illuminate all illuminated glass signage elements (pedestrian, kiosk, and primary gateway sign types all include glass elements).
- Mounting/installation details – provide foundation cross-sections (including hardware), bracket/post details, elevations, materials, finishes and fasteners.
- Electrical details are to be provided for all elements that require electricity. All lighting shall be LEDs. Specific lighting/electrical/

construction items to be included in fabricator engineered drawings:

- ➔ Light source and/or fixture type and manufacturer
- ➔ Power supply (transformer)
- ➔ Amperage and voltage per sign
- ➔ Electrical service required (source)
- ➔ Lighting detail – provide an internal view of light fixtures, LED layout, transformers, internal cut-off switch
- ➔ Engineering for wind load per Town code, which is a wind speed of 90 MPH (3 seconds), and 75 MPH (fastest mile), and Exposure C classification, “open terrain with scattered obstructions, with heights less than 30 feet”.
- ➔ Removable panels (where applicable)
- ➔ Solar lighting electrical panels (where possible, solar electrical power is preferred for signs without easy electrical access).
- ➔ Identify any dimensional or other changes in the overall sign required by virtue of the fabrication materials, techniques and/or engineering.

2. ADA recommendations suggest that signs faces be uniformly illuminated with between 100 to 300 lux (10 to 30 foot candles) of light and that the illumination level on the sign face is “not significantly exceeded by the ambient light or visible bright lighting source behind or in front of the sign.” This is useful in that it provides a range of footcandles required to be visible by folks with visual limitations, however it is a TOTAL value, taking into consideration both the ambient lighting (streetlights, nearby bright signs, etc) and any light produced by the sign itself.

3. Ultimately, the amount of light emitted by the sign must overcome the ambient light in the surrounding without appearing overly bright or becoming a distraction/hazard to pedestrians or motorists and (based on location). Signs should have the ability to be adjusted by the fabricator to compensate for ambient conditions.

4. Three (3) samples of each material to be used on the sign using actual substrate materials should be supplied. One sample will be returned, one sent to the Owner and one kept in the Designer's records.

5. A proofing document of final production keystroking for all sign messages to verify line breaks, character and word spacing, and interline spacing should be submitted. The proofs are to be scaled production art files, not full sized. Each layout is to be identified with the sign number.

6. The fabricator must prepare and submit a full-scale structural sample of the structure of auto directional signs. Sample must use final materials and include a complete horizontal cross section of the sign and at least 1' of height to show how the internal system works. Applicable material samples (#4 above) may be included in this structural sample if the fabricator desires, or the sample may be unfinished. This sample will be retained by the Designer.

7. The fabricator must submit a scaled 12" x 12" draft sample segment of the map insert product to the Designer for approval before producing the final map inserts. This includes samples for the linear map(s), the trail map, and the base area map. Samples will be for all map printing types, including direct printed maps and high pressure laminate maps.

8. Fabricator must submit a schedule detailing how far in advance artwork will be required for printed maps and directories.

9. Fabricator must provide weekly status reports to the Owner and Designer detailing fabrication and installation progress and the expected completion schedule. Fabricator/installer shall coordinate with Owner in advance of each construction work day.

F. Material Handling

The Fabricator is to pack, wrap, crate, bundle, box, bag, or otherwise package, handle, transport, and store all fabricated work as necessary to provide protection from damage by every cause. Fabricator shall provide clear and legible identifying information on all product packaging to ensure proper on-site identification, delivery and installation.

G. Construction Methodology

The drawings call for a variety of fabrication techniques. The fabricator is provided leeway to fabricate the signs to meet the intent of the designs depicted by the drawings.

1. Sign faces are to be fabricated using steel/aluminum plate of varying thicknesses, as specified on design intent drawings, with a minimum thickness of .125 inches unless otherwise noted.
2. Sign cabinet seams shall be sealed to ensure they are watertight.
3. All finishes are to be satin/matte (as indicated) finish, free from fading, peeling or cracking. Paint preparation of all exterior metal surfaces of the sign to include removal of all scratches and imperfections, sanding and chemical etching. Substrate cleaning, preparation, paint application and paint thickness to be in strict compliance with Matthews Paint or AkzoNobel published recommendations. Acceleration of the drying process is not allowed.
4. Except where approved otherwise by Owner, conceal fasteners.
5. Any sign faces smaller than 8' by 4' are to be fabricated from 1 piece of seamless material. Where materials need to be seamed, there shall be no visible joints or weld marks.
6. On welded joints, dimensional and structural welding defects will not be accepted, including but not limited to: poor weld contours, including excessive bead convexity and reinforcement, and considerable concavity or undersized welds; cracks; undercutting; porosity; incomplete fusion; inadequate penetration; spatter; and non-metallic inclusions. Welding is to be performed by AWS (or similar) certified personnel, following AWS Standard Welding Procedure Specifications (SWPSs) for steel, aluminum, and stainless steel as appropriate.
7. Non-welded joints between various portions of signs must have a tight, hairline-type appearance, without gaps. Provide sufficient fastenings to preclude looseness, racking, or similar movement.
8. Provide drain holes to prevent accumulation of water within signs. Holes must be inconspicuous and be in inconspicuous locations; holes must be located such that drainage does not occur onto signs, or other surfaces subject to staining. Provide internal system of baffles to prevent “light leaks” through drain holes of

illuminated signs. Provide permanent color-coordinated insect screening over drain holes.

9. Non-illuminated sign faces are to have lettering and graphics direct printed, minimum 5-year warranty, unless otherwise noted in the design intent drawings (such as dimensional lettering specified for the gateways and other sign types).
10. High pressure laminate panels with embedded artwork are to be printed at a minimum of 1200 DPI using exterior inks. The panel must be a solid, one-piece panel with all graphic elements inseparable from the substrate in which they are embedded (izone, 888.464.9663).
11. Digitally printed graphics are to be printed at a minimum of 1200 DPI using exterior inks and covered with exterior grade, graffiti resistant clear lamination.
12. Visible metal joints must adhere to a fit tolerance of .01”.
13. Aluminum and steel components are to be isolated to prevent galvanic corrosion.
14. Steel components are to be powder coated per the coating manufacturers specifications to prevent corrosion.
15. Construction materials (i.e. metal) shall not be reflective.

H. Fonts/Typefaces

The fonts used for this project were selected specifically for this project by the Designer and Owner, and include those listed in the graphic standards.

It is the responsibility of the fabricator to purchase the fonts.

No substitution of any other typefaces may be made. Under no circumstances are typefaces to be electronically distorted (“squeezed” or “extended”) for purposes of fitting to the specified sign or general alteration of the sign face composition unless noted in the drawings. This includes (but is not limited to) stretching, squeezing, tilting, outlining or shadowing.

1. All letterforms, symbols or graphics shall be reproduced either by photographic or computer-generated means. Hand-cut characters are not acceptable. Cutting shall be done in such manner that edges and corners of finished

2. letterforms will be sharp and true. Letterforms with nicked, cut, ragged, rounded corners, and similar disfigurements will not be acceptable.
3. All letterforms shall be made from material and gauge as indicated on design intent drawings. Typefaces shall be replicated as indicated on the drawing.
4. Ligatures are to be turned off.
5. Apostrophes are to be used, not footmarks. Note that there is a difference in most fonts.
6. Silk-screened and vinyl copy is to match the sheen of the copy panel background (satin or matte). Edges of letters shall be straight and corners sharp. Surface of letters shall be uniform in color finish, and free from pinholes and other imperfections.
7. Silk-screened images shall be executed with photo screens prepared from original art. No hand-cut screens will be accepted. Original art shall be defined as artwork that is a first generation reproduction of the specified art.
8. Silk-screening shall be highest quality, with sharp lines and no sawtooths or uneven ink coverage. Screens shall be photographically produced. Application of inks through screens shall consist of one flood pass and one print pass. Images shall be uniform in color and ink thickness. Images shall be free from squeegee marks and lines resulting from improper print stroke or screen off contact height. Signs shall be placed in adequate drying racks with minimum of 2 inches between racks for ample airflow. Sign racks shall have system of forced airflow between layers to provide proper drying and curing of inks. After signs have dried completely according to the ink manufacturer’s time allowance, signs may be packaged.
9. The edges and corners of routed dimensional and vinyl letterforms shall be sharp and true. Letterforms with nicked, cut, ragged, rounded (positive or negative) corners, and similar disfigurements will not be acceptable.
10. Letterforms shall be aligned so as to maintain a base line parallel to the sign format, with margins and layout as indicated on design intent drawings and approved shop drawings. Vertical strokes shall be plumb.

11. Mechanically fasten center of letters to surface materials as described in the design intent.

I. Town Codes, Permits and Variances

Fabricator shall be knowledgeable of relevant local code requirements and honor same in fabrication and installation. Where applicable, it is the responsibility of the Fabricator to secure any and all necessary permits for signage installation. It is the responsibility of the Owner to secure variances, should any be required. It is the Owner’s responsibility to call the appropriate agency to have all underground utilities properly located and marked. Any damage to below-grade utilities or structures for which the Owner has provided adequate location information is the responsibility of the Fabricator.

J. Site Visit

Prior to installation of the signs, the Fabricator is to visit the proposed site to observe existing conditions and verify all signage required and its location with Owner. At this time the locations shall be staked using a non-permanent visible device such as spray chalk or non-permanent paint. Certain signs may be located on sloped grades and may require uneven footings for each post. Site-verify all locations to determine special requirements for footing templates, if required.

The final Sign Message Schedule and Sign Location Plan shall be consulted together and shall be approved by the Owner to determine the precise location and compatibility for each sign. Any necessary adjustments will be made with the approval of the Owner.

K. Masonry/Footings

Any concrete bases for signage are to be poured in place and footings are to extend beneath the frost line (Owner frost depth code requires 36-inch depth), or deeper to meet local requirements. All footings or bases shall be poured within a form and level with grade unless otherwise specified in the final design drawings. In locations where sloped surfaces require exposure of the concrete footing/base, the exposed concrete shall have a light broom finish and be colored in 242 Sandstone (<https://www.denverconcretecompany.net/concrete-services/stamped-concrete/concrete-colors.html>). Foundation/footings should be level with grade unless otherwise noted or as specified by state or local code. Foundation/footings shall not extend above and exposed edges shall be finished with a bevel to prevent

chipping. To meet industry best practices, the concrete shall be floated by machine or hand before finishing in order to embed larger aggregates especially when part of the footing or base extends above ground. Concrete surface shall have a light broomed finish grade appearance. All concrete bases and footings should be edged to break any bond with the form and create a neat appearance. All forms shall be removed once the concrete has properly cured. Concrete and reinforcement specifications shall be shown on shop drawing submittals. The fabricator is responsible for the necessary templates, mounting plates and hardware for concrete and masonry bases.

All masonry (concrete block, poured concrete, river rock, slab, veneer, mortar, etc.) is to be properly treated and protected to maintain the structural integrity of the masonry work with exposure to all environmental conditions found at the site. For exposed or visible masonry, this shall include the application of protective sealers or similar finishes to diminish the effects of close-proximity sprinkling or irrigation systems.

Signs are to be mounted on J-bolt/breakaway footings, centered on the concrete base or footing, and engineered per code, unless otherwise specified in the design intent drawings.

L. Wind Load

Signs, banners and mounting devices shall be engineered to meet Town of Johnstown's requirements regarding wind loads for signage design and installation. The Fabricator shall determine appropriate method of anchoring signs to the locations specified to meet these requirements as well as all local code requirements.

M. Mounting

All signs to be mounted level and true. All exposed hardware is to be touch-up painted on site as required. It is preferred that all bolts, nuts, washers, or other fasteners shall be stainless steel. However galvanized steel is acceptable, so long as all exposed surfaces are sealed.

While sign type drawings may specify or indicate possible mounting and/or mounting hardware details, the fabricator will be able to substitute equal or better hardware and techniques, based upon their experience with similar mounting situations and as long as the visual and structural appearance of the sign is not compromised from that shown in the design intent drawings.

All signage products must be installed such that there are no misalignments between visible components. Sign elements intended to be removable or changeable after installation must function as intended without binding, sticking or blocking. It will be the responsibility of the Fabricator to correct any installation misalignments at no charge.

Fabricator and their installers are expected to have knowledge of ADA mounting guidelines and Town zoning codes, general sign locating practices, and any particular unique installations defined by Designer. It is the desire of the Owner that the fabricator follow these guidelines as well as architectural cues in installing for the best visual placement, keeping a reasonable distance from protruding objects. Any signage that is improperly located is to be moved to the proper location by the fabricator, and repairs to wall surfaces and signage are to be at the fabricator's expense.

Specific locations provided within this document are the preferred locations of the Designer, but those locations may be adjusted by the fabricator and Owner per written agreement with the Fabricator as necessary (for example, to avoid underground utilities or meet standard roadway offset requirements). If the Installers are unable to make a decision about any sign location(s), they shall notify the Owner and contact the Designer to provide a graphic representation of the questionable location(s), for the purpose of getting Owner and Designer site approval.

N. Town Design Standards & Coordination

The Town regulations and standards for signage and lighting systems can be found in the Town code, and should be used to determine light levels and standards.

O. Demolition

The fabricator is responsible for the removal and disposal of certain site features if identified in the sign message schedule. In addition to the above grade removals any foundations, anchors and posts must also be removed. If there are electrical connections, they must be properly terminated.

P. Site Safety and Restoration

During the installation period, the fabricator is responsible for their own safety, and shall maintain a safe environment for pedestrians. The

fabricator is to keep the Owner's premises and the adjoining premises, driveways and streets clean and clear. The job site shall be left safe, neat and clean at the completion of each day's operation. The fabricator is also expected to temporarily maintain old signs in order to continue their directional and identification functions, as well as to maintain signage that meets MUTCD standards during the installation period. At the completion of work, the fabricator shall remove all rubbish, tools, equipment, and surplus materials, from and about the premises, and shall leave the site as originally found. The fabricator shall be responsible for repairing or correcting damage resulting from Installer's work.

Q. Punchlist

It is required that the fabricator complete a walk through with the Owner immediately following installation to identify any errors, such as construction or installation issues. Such errors are to be corrected in a timely manner, and to the satisfaction of the Owner. The Owner and Fabricator/Installer shall jointly prepare a 'punchlist' of project installation deficiencies to be corrected by the Fabricator/Installer within a period of time specified in agreement by the Owner and Designer.

S. Signage Warranty Plan

Fabricator is solely responsible for applying products (paints, finishes, components, etc.) according to manufacturers' specifications and validating the warranty. The fabricator is to provide a written five (5) year full replacement warranty to the Owner that all signs will be free of defects due to craft work and materials including, but not limited to:

- bubbling, chalking, rusting or other disintegration of the sign panel, graphics or of the edges;
- corrosion appearing beneath paint surfaces of panels, brackets, posts or other support assemblies (except as an obvious result of vandalism or other external damage);
- corrosion of fasteners;
- assemblies not remaining true and plumb on their supports;
- fading, chalking and discoloration of the colors and finishes within the vinyl and paint manufacturer's stated warranty period;
- peeling, delamination or warping ("oil canning"); and

- repair and reinstallation of signage due to failed mountings.

Fabricator shall provide and extend in writing to the Owner all manufacturers' warranties for materials and components used within the signs. It is the fabricator's responsibility to obtain extended 5-year manufacturer warranties on all powder coat applications. Warranty issues will be addressed by the fabricator within a 2-day time period (either through email communication or a phone call). All warranty agreements shall be summarized into a warranty plan and delivered to the Town for review and comment.

T. Repair or Replacement

Without additional cost to the Owner, the fabricator shall repair or replace, including installation, any defective signs or hardware that develop during the warranty period and repair any damage to other work due to such imperfections. The fabricator will be required to fully replace any and all signs that are in error relative to the working documents (sign message schedule and sign type drawings) that were submitted to the fabricator upon award of contract. Replacement of any warranty items shall occur within a 60-day timeframe.

U. Construction Safety & Traffic Control Plan

The Contractor shall arrange Work to disrupt traffic as little as possible. All traffic Control Devices used shall conform to the latest edition of the Manual of Uniform Traffic Control Devices, (MUTCD). Except as otherwise permitted, two-way traffic shall be maintained at all times in public roadways (see the Bidding Resources document, Attachment B for expanded Traffic Control information).

V. Maintenance Plan

Fabricator is responsible for providing maintenance and inspection of the signage for a 1-year time period, extendable for up to a 5-year period. Maintenance responsibilities will include cleaning and inspection of the signage, creation of a punchlist for any needed repairs and/or replacements, and estimated costs and timeframes for the repairs/replacements. Inspection and punchlists will be performed every 6 months for the first year period. Owner representatives shall accompany the Fabricator during the first year signage maintenance and inspections to provide guidance and direction regarding the inspection and maintenance of the installed signage. The Fabricator

will provide the Owner with an inspection and maintenance punchlist after the first year, along with projected costs to continue yearly inspection and maintenance of each sign type as agreed upon.

W. Additional Signage Costs & Phases

The selected fabricator will be provided a complete copy of all the proposed signage phases, locations, and designs, and asked to create a full cost estimate for subsequent signage phases by the end of July 2023. Proposed costs will need to be guaranteed for a 9-month time period (with a to be determined contingency), beginning in July 2023 and ending in March 2024. Should the Town move forward with future phases using the guaranteed price, the selected bidder may be awarded Phase 2 signage fabrication. A final decision regarding the opportunity for using the Phase 1 bidder to fabricate the Phase 2 signage will be made by March 2024.

05

Color, Typography & Artwork

COLOR, TYPOGRAPHY & ARTWORK

Sign Color/Materials Palette

Fabricator is responsible for supplying samples for all colors/materials in the palette. These are the colors specific to the Phase 1 signs. Colors are referenced on the signage design elevations.



01 Pantone 454143
Satin Finish Powdercoat (non reflective)
RGB: R69/G65/B67
CMYK: C65/M62/



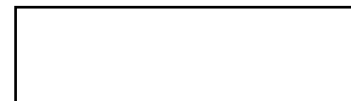
02 Pantone 2B4D59
Satin Finish Powdercoat (non reflective)
RGB: R43/G77/B90
CMYK: C85/M58/Y49/K32



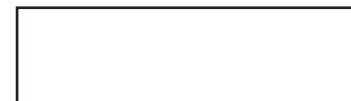
03 Pantone 39998E
Satin Finish Powdercoat (non reflective)
RGB: R57/G153/B142
CMYK: C76/M20/Y49/K2



04 Pantone FFDC7C
Satin Finish Powdercoat (non reflective)
RGB: R254/G221/B125
CMYK: C1/M11/Y61/K0



05 PMS White
Satin Finish Powdercoat (non reflective)



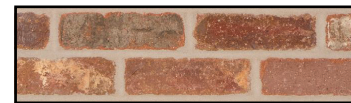
07 Clear Coat
Anti-Graffiti Clear Coat (non reflective)
(On All Powdercoated Sign Faces/
Surfaces/Lettering)



08 Reflective White
ORALITE 5800 White
(Sign Text)



09 White Frosted Acrylic
LuciteLux White Frosted Acrylic or Similar



10 General Shale 'Sonoma' Clay Brick
<https://generalshale.com/products/sonoma/>



11 Colored Concrete, Light Broom Finish
Denver Concrete - Sandstone (242)
(Any exposed signage footers)



12 LED Tape to Illuminate Electrified Signage
(Static warm white light with maximum
96 watts for soft glow lighting)



13 Yellow Frosted Acrylic
LuciteLux White Frosted Acrylic or Similar

MODESTO OPEN - DOWNTOWN

ABCDEFGHIJKLMNOPQRSTUVWXYZ

ABCDEFGHIJKLMNOPQRSTUVWXYZ

Niveau Grotesk - JOHNSTOWN & "Local Grows Here"

ABCDEFGHIJKLMNOPQRSTUVWXYZ

abcdefghijklmnopqrstuvwxyz



Typical auto directional signage panel - all needed directional and informational artwork will be provided to the selected fabricator prior to fabrication

DOCUMENT PREPARED BY:

Michael Baker

I N T E R N A T I O N A L