



*Town of Johnstown*

# IRON HORSE SUBDIVISION FILING NO. 3

Preliminary/Final Subdivision Plat and Development Plan  
(SUB21-0016)

Planning and Zoning Commission Meeting

March 22, 2023

# VICINITY MAP

- East of High Plains Blvd / LCR 3
- South of Ronald Reagan Blvd.
- Iron Horse PUD



VICINITY MAP

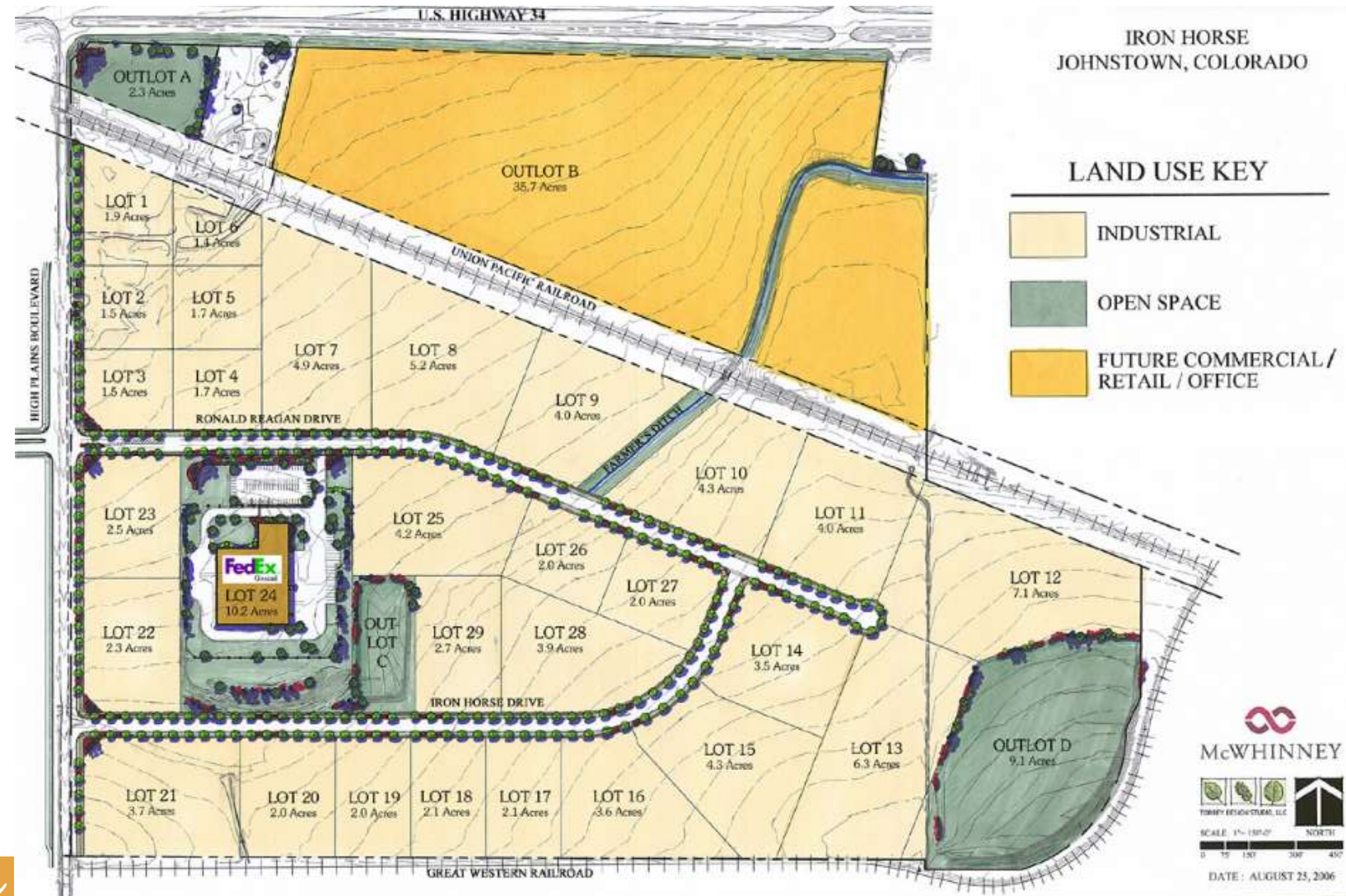


Town of Johnstown

johnstown.colorado.gov | 970-587-4664

# BACKGROUND

- 2006 Spreng Annexation
- PUD-MU
- Iron Horse Design Guidelines with Land Use Plan



Town of Johnstown

johnstown.colorado.gov | 970-587-4664



# STAFF ANALYSIS

- Staff has no outstanding concerns.
- Conforms to the Iron Horse Land Use Plan.
- In alignment with Johnstown Area Comprehensive Plan
- In compliance with the Town's codes, regulations, and requirements.
- Recommendation for Approval to Council.