

OUTLINE DEVELOPMENT PLAN **AMENDMENT 1** WELTY RIDGE

LOCATED IN SECTION 10, TOWNSHIP 4 NORTH, RANGE 68 WEST OF THE SIXTH PRINCIPAL MERIDIAN, IN JOHNSTOWN, COUNTY OF WELD, STATE OF COLORADO

#	REVISION DESCRIPTION	DATE	BY
1	APPROVED ODP	JANUARY 22, 2020	

PROJECT INTENT

THE INTENT OF THIS OUTLINE DEVELOPMENT PLAN (ODP) IS TO PROVIDE OVERLAY ZONING TO THE 140+ ACRE WELTY RIDGE PROPERTY. WELTY RIDGE IS ENVISIONED AS A MIXED USE DEVELOPMENT WHICH INCLUDES PLANNING AREAS DESIGNATED FOR RESIDENTIAL, RETAIL, COMMERCIAL, LIGHT INDUSTRIAL, AND OFFICE USES. THIS DOCUMENT WILL GUIDE THE OVERALL CHARACTER OF WELTY RIDGE TO ENSURE THE QUALITY AND COHESIVENESS DESIRED IN THIS EMERGING PART OF NORTHERN COLORADO.

LEGAL DESCRIPTION

THE NE ¼ OF SECTION 10, TOWNSHIP 4 NORTH, RANGE 68 WEST OF THE 6TH P.M., COUNTY OF WELD, STATE OF COLORADO, EXCEPT THAT PORTION CONVEYED IN BOOK 1570 AT PAGE 620.

GENERAL NOTES

- A. COMMERCIAL, OFFICE OR MULTI-FAMILY DEVELOPMENTS CAN OCCUPY THE SAME LOT, MIXED HORIZONTALLY OR VERTICALLY.
- B. ALL UNPLATTED PROPERTY (PER THE FINAL PLAT SUBDIVISION PROCESS) WITHIN THIS PUD MAY REMAIN IN AGRICULTURAL USE UNTIL SUCH TIME AS DEVELOPMENT OF THAT AREA BEGINS.
- C. LANDSCAPING, SIGNAGE, ARCHITECTURE, NON-RESIDENTIAL PARKING, FENCING AND LIGHTING FOR DEVELOPMENT WITH THIS PUD SHALL EITHER FOLLOW THOSE APPLICABLE STANDARDS IN THE TOWN OF JOHNSTOWN MUNICIPAL CODE OR THE DEVELOPER MAY FORMULATE DESIGN STANDARDS REGULATING THE DESIGN, CHARACTER, LOCATION AND OTHER DETAILS OF THESE ELEMENTS PRIOR TO THEIR IMPLEMENTATION. THE DEVELOPER-FORMULATED DESIGN STANDARDS MUST RECEIVE TOWN APPROVAL PRIOR TO IMPLEMENTATION.
- D. WHERE A PROPOSED USE IS NOT LISTED IN THE ODP, IT MAY BE ALLOWED IF DETERMINED IN WRITING BY PLANNING AND DEVELOPMENT DIRECTOR TO BE SIMILAR IN CHARACTER AND OPERATION, AND HAVING THE SAME OR LESSER IMPACT, AS USES THAT ARE ALLOWED.
- E. ALL DRAINAGE ELEMENTS ARE CONCEPTUAL IN NATURE AND FINAL DETERMINATIONS OF THE DRAINAGE SYSTEM, TO INCLUDE THE PLACEMENT OF DETENTION/RETENTION PONDS, CHANNELS, AND STORM SEWER, WILL BE MADE IN ACCORDANCE WITH THE APPLICABLE FINAL DRAINAGE REPORTS AND PLANS.

DEVELOPMENT PHASING

PHASING WILL OCCUR IN A LOGICAL AND COST EFFECTIVE MANNER BASED ON INFRASTRUCTURE EXTENSION, AVAILABILITY OF UTILITY SERVICE, AND MARKET CONDITIONS. THE PROJECT WILL BE BUILT IN MULTIPLE PHASES, AS CONDITIONS DICTATE.

RELATIONSHIP TO TOWN CODE & DEVELOPMENT STANDARDS

THE PROVISIONS OF THIS PUD SHALL PREVAIL AND GOVERN DEVELOPMENT TO THE EXTENT PERMITTED BY THE TOWN OF JOHNSTOWN MUNICIPAL CODE. WHERE STANDARDS, DETAILS, AND GUIDELINES OF THE PUD - OUTLINE, PRELIMINARY, OR FINAL DEVELOPMENT PLANS - DO NOT CLEARLY ADDRESS A SPECIFIC SUBJECT OR ARE SILENT, THE JOHNSTOWN MUNICIPAL AND OTHER STANDARDS, REGULATIONS, AND GUIDELINES SHALL BE USED. ALL PROPOSED DEVELOPMENT IS SUBJECT TO TOWN OF JOHNSTOWN REVIEW PROCEDURES.

OWNER

PLATTE LAND & WATER, LLC
 210 UNIVERSITY BLVD.
 SUITE 710
 DENVER, CO 80206
 303-263-2105

PROJECT MANAGER

ERIK HALVERSON
 LAND ASSET STRATEGIES, LLC
 15400 WEST 64TH AVENUE
 SUITE 109
 ARVADA, CO 80007
 970-319-5836
 ehalverson@landassetstrategies.com

ENGINEER

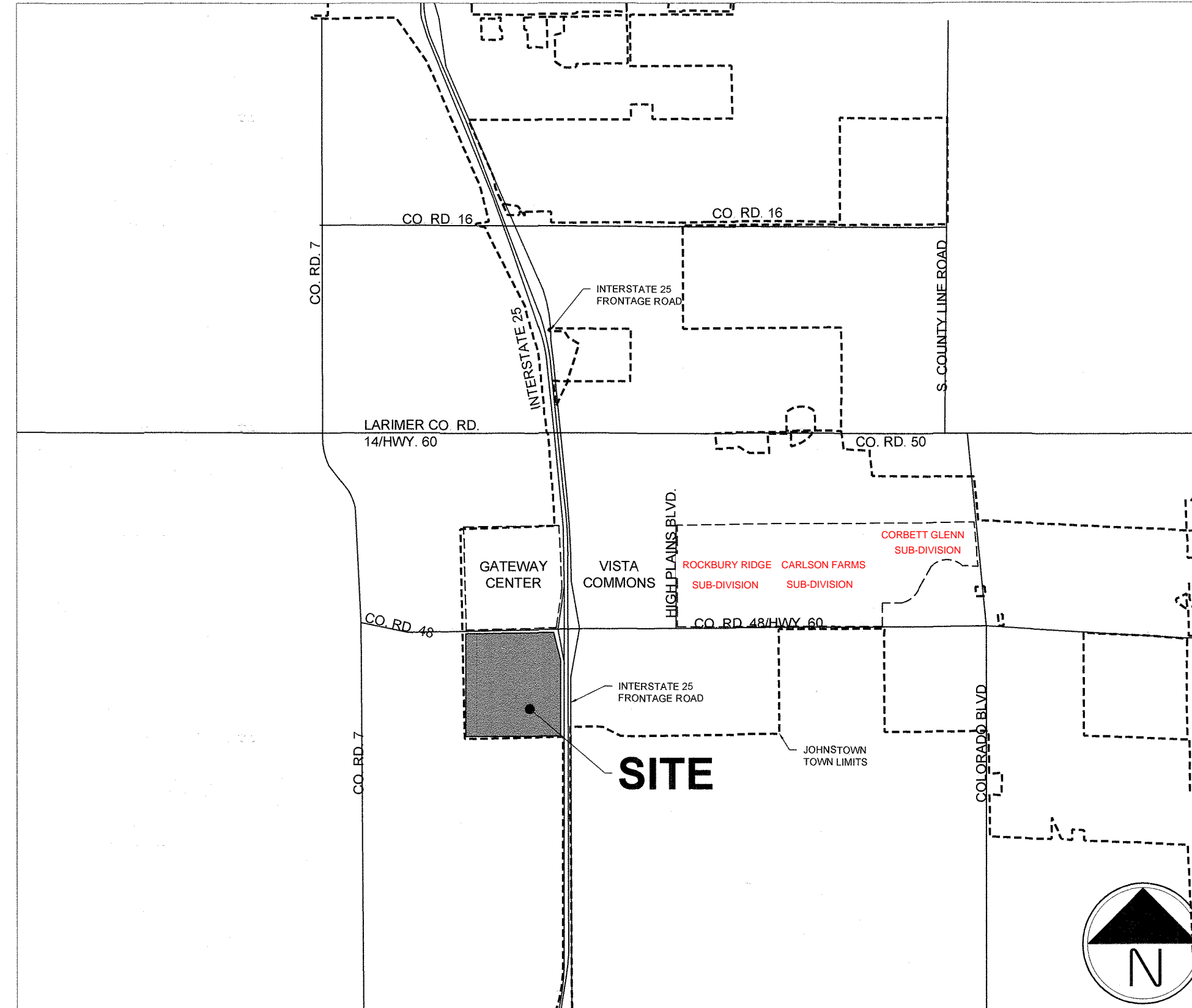
KEVIN ROHRBOUGH
 CORE CONSULTANTS
 1950 W LITTLETON BLVD.
 SUITE 109
 LITTLETON, CO 80120
 303-703-4444
 rohrough@corecivil.com

PLANNER

JEFF MARCK
 TERRACINA DESIGN
 10200 E. GIRARD AVENUE
 BLDG. A, SUITE 314
 DENVER, CO 80231
 303-632-8867
 jmarck@terracinadesign.com

AMENDMENT ENGINEER

KYLE WATSON
 KIMLEY-HORN & ASSOCIATES
 4582 S ULSTER STREET
 ST. 1500
 DENVER, CO 80210
 720-943-5665
 kyle.watson@kimley-horn.com



VICINITY MAP

1"=3000'



EXISTING ZONING

1"=500'

APPROVALS

TOWN COUNCIL

THIS OUTLINE DEVELOPMENT PLAN, TO BE KNOWN AS WELTY RIDGE ODP, IS APPROVED AND ACCEPTED BY THE TOWN OF JOHNSTOWN, BY ORDINANCE NUMBER 2020-167 PASSED AND ADOPTED ON FINAL READING AT A REGULAR MEETING OF THE TOWN COUNCIL OF THE TOWN OF JOHNSTOWN, COLORADO HELD ON THE 10th DAY OF January, 2020.

BY: [Signature]
MAYOR

ATTEST: [Signature]
TOWN CLERK

AMENDMENT 1

THIS OUTLINE DEVELOPMENT PLAN, TO BE KNOWN AS AMENDMENT 1, IS APPROVED AND ACCEPTED BY THE TOWN OF JOHNSTOWN, BY ORDINANCE NUMBER 2020-167 PASSED AND ADOPTED ON FINAL READING AT A REGULAR MEETING OF THE TOWN COUNCIL OF THE TOWN OF JOHNSTOWN, COLORADO HELD ON THE 10th DAY OF January, 2020.

BY: _____
MAYOR

ATTEST: _____
TOWN CLERK

SHEET INDEX ☐ = Sheets being amended

1	COVER
2	LAND USE PLAN
3,4	LAND USE MATRIX
5	CIRCULATION PLAN
6	STREET SECTIONS
7	TRAILS & OPEN SPACE PLAN
8	CONCEPTUAL UTILITY PLAN
9	CONCEPTUAL GRADING PLAN
10	DEVELOPMENT STANDARDS
11-12	DESIGN GUIDELINES

OUTLINE DEVELOPMENT PLAN AMENDMENT 1 WELTY RIDGE

LOCATED IN SECTION 10, TOWNSHIP 4 NORTH, RANGE 68 WEST OF THE SIXTH PRINCIPAL MERIDIAN, IN JOHNSTOWN, COUNTY OF WELD, STATE OF COLORADO

A. INTRODUCTION

THE PURPOSE OF THIS SECTION IS TO ESTABLISH GENERAL PROVISIONS AND CLARIFY STANDARDS AND REQUIREMENTS FOR DEVELOPMENT WITHIN THE WELTY RIDGE PUD. DUE TO THE SIZE OF LAND AREA CONTAINED WITHIN THIS PUD AND THE CORRESPONDING LONG TERM BUILD OUT THAT IS ANTICIPATED, A RATHER BROAD RANGE OF DENSITIES AND/OR SQUARE FOOTAGES HAVE BEEN PROPOSED FOR EACH LAND USE PARCEL. THESE RANGES WILL ALLOW A VARIETY OF COMMERCIAL, LIGHT INDUSTRIAL, AND HOUSING PRODUCTS. IN ADDITION TO PROMOTING LAND USE AND DENSITY FLEXIBILITY, RANGES WILL ACCOMMODATE HOUSING PRODUCT, LAND PLANNING, MARKET AND TECHNOLOGICAL CHANGES INTO THE FUTURE. REFER TO THE PLANNING AREA SUMMARY FOR SPECIFIC DENSITIES AND SQUARE FOOTAGES.

B. DENSITY RANGES

RESIDENTIAL DENSITY RANGES ARE SPECIFIED WITHIN EACH ZONE AS LABELED ON THE LAND USE PLAN (REFER TO THE PLANNING AREA SUMMARY WITHIN THIS DOCUMENT FOR DENSITY RANGES). THE FINAL AVERAGE DENSITY OF A DEVELOPMENT PARCEL MUST BE WITHIN 10% THE SPECIFIED DENSITY RANGE INDICATED FOR THAT PLANNING AREA. THE FINAL AVERAGE DENSITY OF A PLANNING AREA SHALL BE BASED ON ALL RESIDENTIAL UNITS APPROVED THROUGH THE FINAL PLAT PROCESS WITHIN THE PLANNING AREA, WHETHER APPROVED AS A SINGLE PLAT OR AS MULTIPLE PLATS.

C. MAXIMUM RESIDENTIAL UNITS PER AREA

TRANSFER(S) OF RESIDENTIAL UNITS FROM PLANNING AREA TO PLANNING AREA (TRANSFER OF UNITS MAY NOT EXCEED 30% OF THE RECIPIENT PLANNING AREA MAX UNITS PER AREA) MAY BE PERMITTED BY THE DEVELOPER WITH APPROVAL BY THE PLANNING AND DEVELOPMENT DIRECTOR. UNIT TRANSFERS SHALL BE TRACKED BY THE DEVELOPER AND PROVIDED TO THE PLANNING AND DEVELOPMENT DIRECTOR WITH EACH SUCH TRANSFER AT THE FINAL PLAT STAGE OF THE SUBDIVISION PROCESS. HOWEVER, AT NO TIME SHALL THE TOTAL RESIDENTIAL UNITS WITHIN THIS PUD EXCEED 850 WITHOUT AN AMENDMENT TO THE ODP, APPROVED BY TOWN COUNCIL.

D. RESIDENTIAL UNITS TRANSFERS

ONCE A PLANNING AREA HAS BEEN FULLY PLATTED THROUGH THE FINAL PLAT PROCESS, ANY REMAINING RESIDENTIAL DENSITY/UNITS DESIGNATED ON THE PUD ZONE DOCUMENT WITHIN SAID PLANNING AREA SHALL REMAIN AVAILABLE FOR TRANSFER TO OTHER REMAINING RECIPIENT PLANNING AREAS.

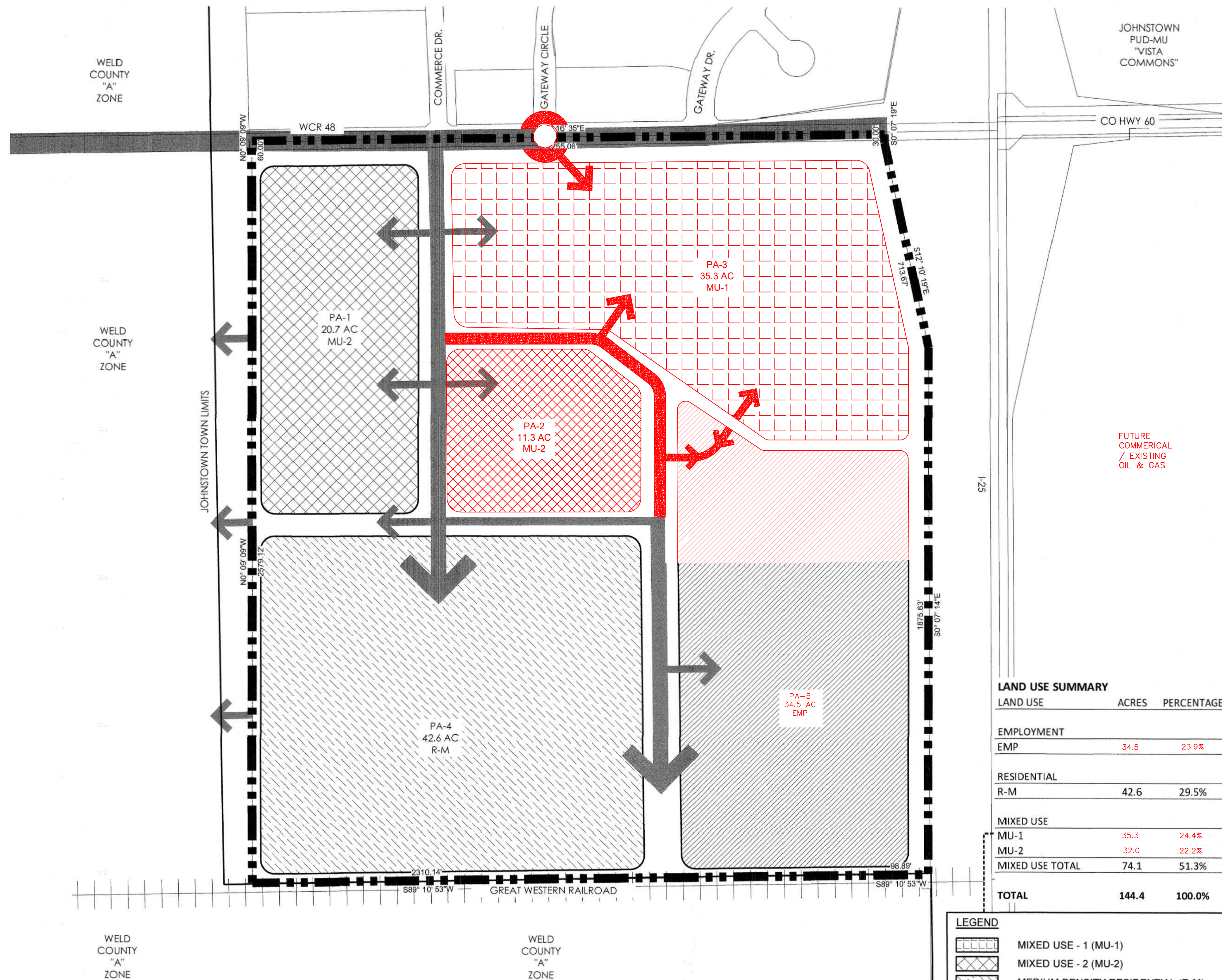
E. PLANNING AREA BOUNDARIES

PLANNING AREA ACREAGES AND BOUNDARIES ARE CONCEPTUAL AND SUBJECT TO CHANGE WITH DETAILED PLANNING. PLANNING AREA ACREAGES MAY CHANGE UP TO 30% WITH APPROVAL BY THE PLANNING AND DEVELOPMENT DIRECTOR. SUCH CHANGES WILL RESULT IN CORRESPONDING CHANGES TO THE MAX SQ. FT./AREA OR MAX UNITS/AREA SHOWN IN THE PLANNING AREA SUMMARY.

IF PLANNING AREA CHANGES ARE MADE, ALL STREET CLASSIFICATIONS (AS SHOWN ON SHEET 6) ARE SUBJECT TO CHANGE.

F. MAXIMUM COMMERCIAL SQUARE FOOTAGE PER AREA

TRANSFER(S) OF COMMERCIAL SQUARE FOOTAGE FROM PLANNING AREA TO PLANNING AREA (TRANSFER OF SQUARE FOOTAGE MAY NOT EXCEED 30% OF THE RECIPIENT PLANNING AREA MAX SQ. FT. PER AREA) MAY BE PERMITTED WITH APPROVAL BY THE PLANNING AND DEVELOPMENT DIRECTOR. SQUARE FOOTAGE TRANSFERS SHALL BE TRACKED BY THE DEVELOPER AND PROVIDED TO THE PLANNING AND DEVELOPMENT DIRECTOR WITH EACH SUCH TRANSFER AT THE FINAL PLAT STAGE OF THE SUBDIVISION PROCESS. HOWEVER, AT NO TIME SHALL THE OVERALL PUD COMMERCIAL SQUARE FOOTAGE EXCEED 700,000 SQUARE FEET WITHOUT AN AMENDMENT TO THE ODP, APPROVED BY TOWN COUNCIL.



LAND USE SUMMARY		
LAND USE	ACRES	PERCENTAGE
EMPLOYMENT		
EMP	34.5	23.9%
RESIDENTIAL		
R-M	42.6	29.5%
MIXED USE		
MU-1	35.3	24.4%
MU-2	32.0	22.2%
MIXED USE TOTAL	74.1	51.3%
TOTAL	144.4	100.0%

LEGEND	
	MIXED USE - 1 (MU-1)
	MIXED USE - 2 (MU-2)
	MEDIUM DENSITY RESIDENTIAL (R-M)
	EMPLOYMENT (EMP)

PLANNING AREA SUMMARY

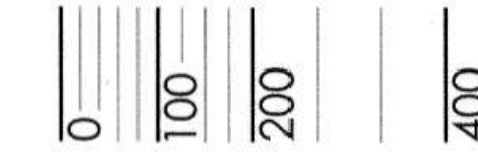
PLANNING AREA	LAND USE	APPROX. ACRES	COMMERCIAL MAX SQ.FT./AREA	RESIDENTIAL		
				MIN. DU /ACRE	MAX. DU /ACRE	MAX UNITS/AREA
PA-1	MIXED USE-2	20.7	270508.00	3	15	311
PA-2	MIXED USE-2	11.3	147668.00	3	15	170
PA-3	MIXED USE-1	35.3	461301.00			243
PA-4	MEDIUM DENSITY RESIDENTIAL	42.6		3	6	256
PA-5	EMPLOYMENT	34.5	450846.00			

DENSITY TRANSFER TRACKING CHART

PLANNING AREA	APPROVED DENSITY PRIOR TO TRANSFER		APPROVED DENSITY AFTER TRANSFER	
	ACRES	RESIDENTIAL UNITS	DENSITY TRANSFER	RESIDENTIAL UNITS
X				
Y				
Z				
TOTAL				

LAND USE PLAN

Scale: 1" = 200'-0"



ODP REVISION 02/23/2021
Kimley»Horn

terracing design
 10200 E. Grand Ave., Ste. A-314
 Denver, CO 80231
 (303) 750-8800

PLATTE
 LAND & WATER, LLC

CORE
 CONSULTANTS

#	REVISION DESCRIPTION	DATE	BY	#
1	APPROVED ODP	JANUARY 22, 2020		

WELTY RIDGE
 JOHNSTOWN, CO
 OUTLINE DEVELOPMENT PLAN
 LAND USE PLAN

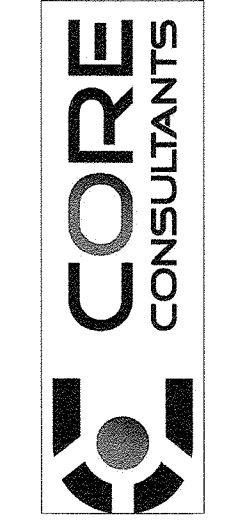
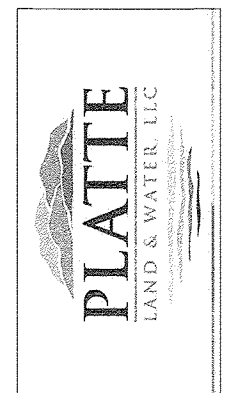
DESIGNED BY: JM
 DRAWN BY: KB
 CHECKED BY: JM

AMENDED
 SHEET
 2 OF 12

1/29/2020 10:22 AM: P:\PLATTE LAND & WATER\GREAT PLAINS WELTY RIDGE\SUBMITTALS\WELTY RIDGE\ODP\LAND USE PLAN.DWG

OUTLINE DEVELOPMENT PLAN **AMENDMENT 1** WELTY RIDGE

LOCATED IN SECTION 10, TOWNSHIP 4 NORTH, RANGE 68 WEST OF THE SIXTH PRINCIPAL MERIDIAN, IN JOHNSTOWN, COUNTY OF WELD, STATE OF COLORADO



# REVISION DESCRIPTION	DATE
1 APPROVED COP	JANUARY 22, 2020
BY	DATE

WELTY RIDGE
JOHNSTOWN, CO
OUTLINE DEVELOPMENT PLAN
LAND USE MATRIX

DESIGNED BY: JM
DRAWN BY: KB
CHECKED BY: JM

LAND USE CLASSIFICATION	SPECIFIC USE TYPE	MU-1	MU-2	EMP	R-M
AGRICULTURAL USES					
Agriculture or Ranch Use	Agriculture	X	X	X	X
	Community Gardens	X	X	X	X
Accessory Structures	Accessory Structures for Agriculture/ Ranching Operations	X	X	X	X
Animals / Livestock	Farm or Ranch Animal Center*	C	-	C	-
	Rodeos*	-	-	C	-
	Commercial Stables*	-	-	C	-
	Private Stables*	-	-	C	-
Horticulture and Nurseries	Outdoor Nursery / Tree Production	C	-	X	-
	Greenhouse/nursery/tree production	C	-	X	-
Markets	Farmers Markets	X	X	X	C
COMMERCIAL USES					
Animal Services	Animal boarding (indoor) and training**	C	C	C	C
	Veterinary offices or clinics	X	X	X	-
Vehicle Parking	Vehicle parking lot	A	A	C	A
	Private park & ride lot, car pool lot or equivalent	X	X	X	-
Building Materials & Services (Retail)	Landscape equipment, hardscape materials (with outdoor storage)	C	-	C	-
Eating and Drinking Establishments	Bar, Tavern/Pub, Beer Tasting/Tap Room	X	X	X	-
	Catering services	X	X	X	-
	Restaurant with or without drive-thru / up	X	X	X	-
Office	Business or professional office (including medical / dental office / clinics)	X	X	X	-
	Call Centers	X	-	X	-
	Courier services	X	X	X	-
	Home Occupations	X	X	-	A
	Temporary Construction offices	X	X	X	X
Temporary Sales Offices	X	X	X	X	
Personal Services	Instructional services, studios, photography, salons/spas	X	X	X	-

*ANIMAL/LIVESTOCK USES ARE CONDITIONAL USES IF WITHIN 250 FEET OF A RESIDENTIAL USE, BUT ARE PERMITTED USE-BY-RIGHT OUTSIDE OF THE 250 FOOT LIMIT FROM RESIDENTIAL USES.
**ANIMAL BOARDING AND TRAINING IS A CONDITIONAL USE IF WITHIN 250 FEET OF A RESIDENTIAL USE, BUT IS A PERMITTED USE-BY-RIGHT OUTSIDE OF THE 250 FOOT LIMIT FROM RESIDENTIAL USES.

LAND USE CLASSIFICATION	SPECIFIC USE TYPE	MU-1	MU-2	EMP	R-M
COMMERCIAL USES					
Recreation / Amusement Facilities	Permanent or Seasonal Amusement Parks	C	-	X	-
	Entertainment - Indoor	X	X	X	-
	Entertainment - Outdoor	X	X	X	-
	Movie theaters or Drive-in Theater	C	-	X	-
	Health clubs	X	X	X	-
	Parks and dog parks	X	X	X	X
	Public and Private Golf Courses and Related Facilities	X	X	X	X
	Outdoor Skateboard Parks	X	X	X	C
	Community / Neighborhood Recreation Center	X	X	X	X
	Small Theaters (Outdoor Performances)	X	X	X	X
Retail	Convenience store / grocery store *** (with or without gas)	X	X	X	-
	Ground floor retail with office or residential on upper levels	X	X	-	-
	Retail	X	X	X	-
Repair Services (Not Including Vehicles)	Furniture or major household appliance or electronics repair	X	-	X	-
	Machinery, excluding truck trailers, heavy equipment, and farm machinery	-	-	X	-
Vehicle / Equipment Sales and Services	Vehicle rentals with lot	C	-	C	-
	Auto Sales and Repair (equal to or less than 4 repair bays)	X	-	X	-
	Auto Sales and Repair (more than 4 repair bays)	C	-	X	-
	Car Wash	X	X	X	-
	RV's, Trailer, Camper, and Limited Equipment (U-Haul type business) rentals	C	-	C	-
	Major vehicle/equipment repair with outdoor storage (includes auto body repair, paint shops, and incidental sales of parts)	-	-	C	-
	Major vehicle/equipment repair without outdoor storage (includes auto body repair, paint shops, and incidental sales of parts)	-	-	X	-
Motor vehicle dealer / sales, new and used RV's, trailers, and campers	C	-	C	-	
Visitor Accommodations	Automotive service stations	X	X	X	-
	Hotel or motel lodging establishments	X	X	X	-
	Overnight Campground with RV parking	C	-	C	-

*** the 5,000 SF limitation has been removed in the convenience store/gas station land use table

DEFINITIONS:

1. LIGHT INDUSTRIAL - LABOR-INTENSIVE OPERATIONS THAT TYPICALLY PRODUCE PRODUCTS THAT ARE TARGETED TOWARD END CONSUMERS RATHER THAN OTHER BUSINESSES (I.E. CONSUMER ELECTRONICS, CLOTHING MANUFACTURING, ETC.)
2. CLUSTER HOMES - ANY RESIDENTIAL GROUPING OF AT LEAST TWO HOMES WHICH ACCESS OFF A COMMON/SHARED DRIVE OR ALLEY.
3. MOTOR COURT - A TYPE OF CLUSTER HOME WITH A SHARED DRIVEWAY IN WHICH SOME OR ALL FRONT DOORS ACCESS OFF SHARED DRIVEWAY.
4. GREEN COURT - A TYPE OF CLUSTER HOME WITH SHARED DRIVEWAY AND COMMON OPEN AREA.
5. OPEN AREA - A PRIVATELY OR PUBLICLY OWNED AND MAINTAINED LAND AREA OR BODY OF WATER OR BOTH WITHIN A DEVELOPMENT UPON WHICH THERE ARE NO STRUCTURES, PARKING AREAS, OR DRIVEWAYS. OPEN AREA MAY BE A LANDSCAPED AREA, PLAZA, RECREATIONAL AREA, SIDEWALKS, OR SUCH OTHER AREAS. LANDSCAPE AND WALKS LOCATED IN RIGHT-OF-WAY CAN NOT BE COUNTED TOWARDS OPEN AREA REQUIREMENT.
6. USABLE OPEN AREA - A PARCEL OF LAND OWNED AND MAINTAINED BY A TOWN, METRO DISTRICT, OR HOME OWNERS' ASSOCIATION WHICH MEETS THE CRITERIA OF OPEN AREA AND IS PROGRAMMED AS AN ACTIVE OR PASSIVE AREA IN WHICH RESIDENTS CAN UTILIZE THE SPACE FOR, BUT IS NOT LIMITED TO, SEATING, SPORTS, PARKS, TRAILS, OR GARDENS.
7. A LIVE/WORK UNIT IS DEFINED AS A SINGLE UNIT CONSISTING OF BOTH A COMMERCIAL/OFFICE AND A RESIDENTIAL (PRIMARY DWELLING) COMPONENT THAT IS OCCUPIED BY THE SAME RESIDENT.

LEGEND	
X	PRINCIPAL PERMITTED USE
A	ACCESSORY USE
-	EXCLUDED USE
C	CONDITIONAL USE
LAND USE	
MIXED USE 1 (MU-1)	
MIXED USE 2 (MU-2)	
MEDIUM DENSITY RESIDENTIAL (R-M)	
EMPLOYMENT (EMP)	

MIXED USE 1 (MU-1): PREDOMINANTLY A LARGE COMMERCIAL/LIGHT INDUSTRIAL FOCUS. THIS ZONE ALLOWS FOR LIGHT INDUSTRIAL AND WAREHOUSING USES ALONG WITH COMMERCIAL AND MULTI-FAMILY USES.

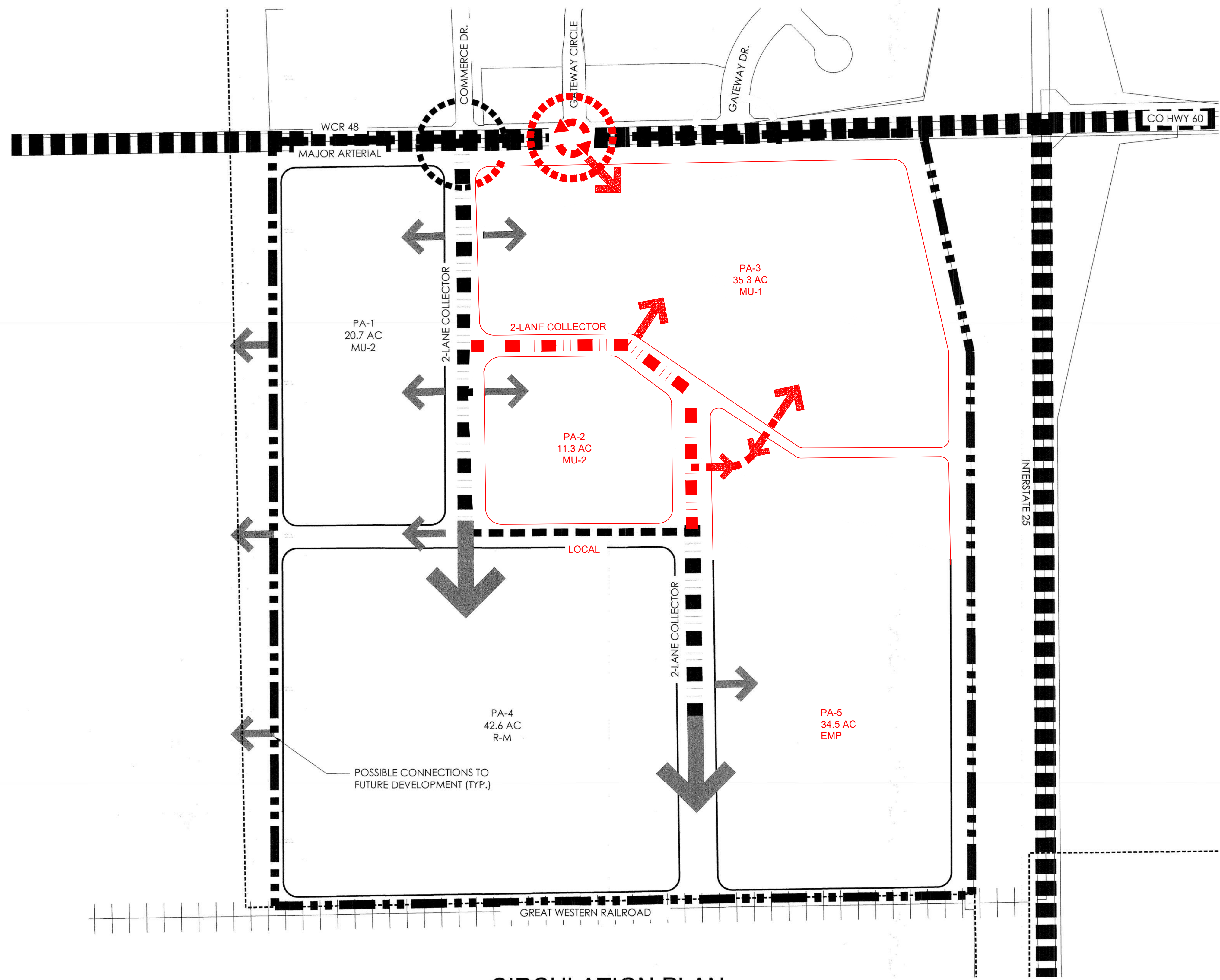
MIXED USE 2 (MU-2): PREDOMINANTLY A NEIGHBORHOOD COMMERCIAL / RESIDENTIAL FOCUS. THIS ZONE PRIMARILY ALLOWS FOR COMMERCIAL USES ALONG WITH HIGH DENSITY RESIDENTIAL.

MEDIUM DENSITY RESIDENTIAL (R-M): THE INTENT IS TO ALLOW FOR SINGLE FAMILY DETACHED HOMES AND SINGLE FAMILY ATTACHED HOMES.

EMPLOYMENT (EMP): THE INTENT IS TO PROVIDE AREAS THAT WILL SERVE AS AN EMPLOYMENT CENTER OR OFFICE PARK THAT CAN ACCOMMODATE BUT NOT LIMITED TO CORPORATE CAMPUS, RESEARCH AND DEVELOPMENT, LIGHT INDUSTRIAL, OFFICE/FLEX, RETAIL, COMMERCIAL, WAREHOUSE AND DISTRIBUTION.

OUTLINE DEVELOPMENT PLAN AMENDMENT 1 WELTY RIDGE

LOCATED IN SECTION 10, TOWNSHIP 4 NORTH, RANGE 68 WEST OF THE SIXTH PRINCIPAL MERIDIAN, IN JOHNSTOWN, COUNTY OF WELD, STATE OF COLORADO



CIRCULATION PLAN

LEGEND

- COLLECTOR (2-LANE & 4-LANE)
- MAJOR ARTERIAL/HIGHWAY
- LOCAL
- PROPOSED* FULL MOVEMENT INTERSECTION
- POTENTIAL ACCESS
- PROPOSED ROUNDABOUT

Scale: 1"= 200'-0"

ALL PLANNING ELEMENTS WITHIN THIS ODP ARE SUBJECT TO FURTHER DETAILED REVIEW AND UPDATED REQUIREMENTS OF THE TOWN WITH SUBSEQUENT SUBMITTALS FOR DEVELOPMENT AND CONSTRUCTION PLANS. THESE PLANS ARE INCLUDED TO ILLUSTRATE THE OVERALL CONCEPTS ONLY.

*DEPENDENT ON TRAFFIC IMPACT STUDY AT TIME OF INDIVIDUAL DEVELOPMENT APPROVALS

#	REVISION DESCRIPTION	DATE	BY
1	APPROVED ODP	JANUARY 22, 2020	

WELTY RIDGE
 JOHNSTOWN, CO
 OUTLINE DEVELOPMENT PLAN
 CIRCULATION PLAN

DESIGNED BY: JM
 DRAWN BY: KB
 CHECKED BY: JM

AMENDED SHEET
 5 OF 12

1/20/2020 10:22 AM P:\PLATTE LAND & WATER\GREAT PLAINS - WELTY\ODP\SUBMITTALS\WELTY ODP\CIRCULATION PLAN.DWG

OUTLINE DEVELOPMENT PLAN AMENDMENT 1 WELTY RIDGE

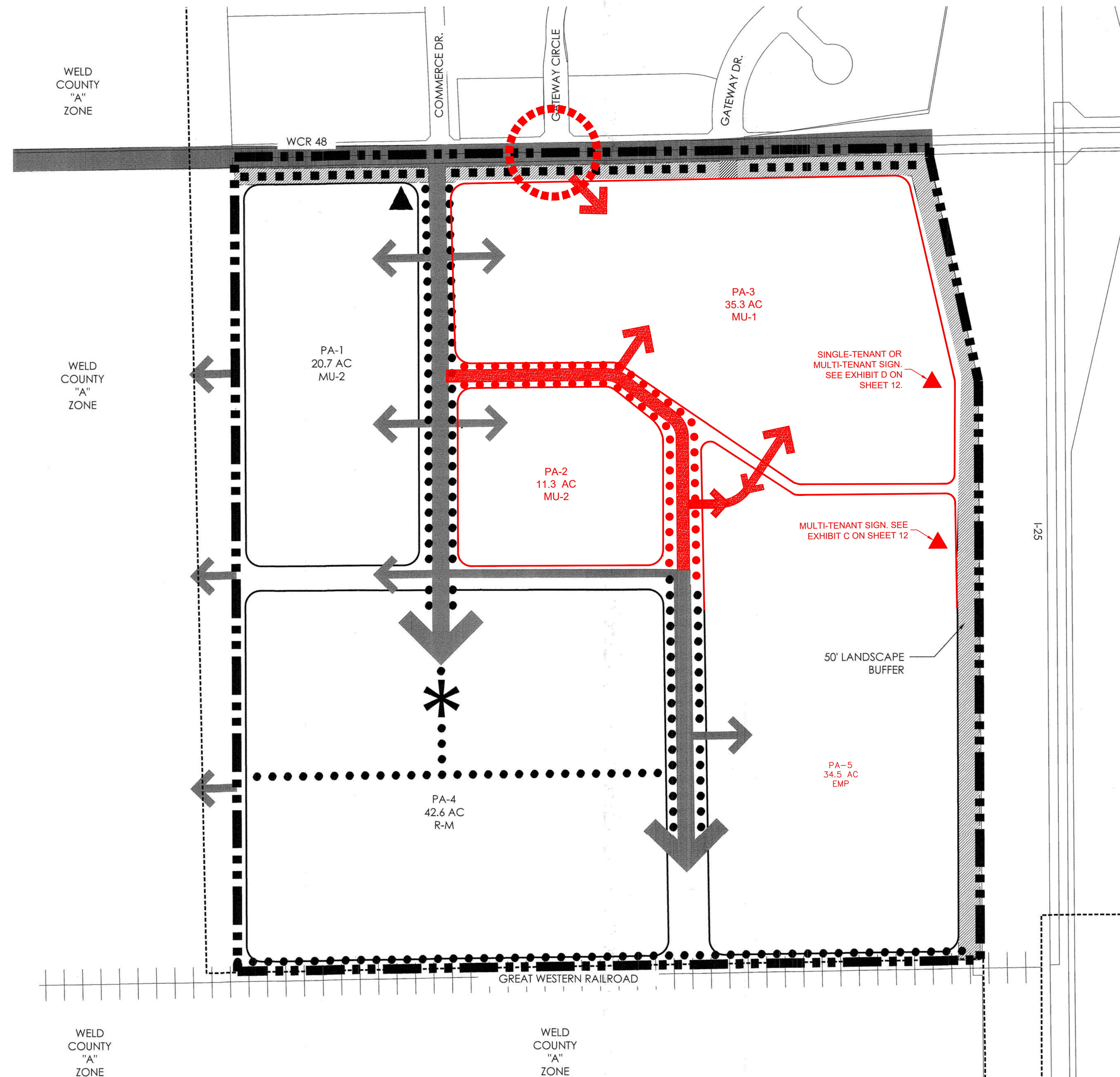
LOCATED IN SECTION 10, TOWNSHIP 4 NORTH, RANGE 68 WEST OF THE SIXTH PRINCIPAL MERIDIAN, IN JOHNSTOWN, COUNTY OF WELD, STATE OF COLORADO

OPEN AREA

- A. FOR THE PURPOSES OF THIS PUD, "OPEN SPACE OR LANDSCAPE AREA" IS REFERRED TO AS "OPEN AREA."
- B. OPEN AREA PROVIDED PER THE REQUIREMENTS OF THIS PUD WILL MEET ALL LANDSCAPE AREA, OPEN SPACE AREA, OR SIMILAR AREAS REQUIRED PER THE JOHNSTOWN CODE REQUIREMENTS.
- C. SINGLE FAMILY DETACHED OR ATTACHED RESIDENTIAL DEVELOPMENT WILL REQUIRE A MINIMUM 15% OPEN AREA.
- D. MULTI-FAMILY RESIDENTIAL DEVELOPMENT WILL REQUIRE A MINIMUM OF 30% OPEN AREA.
- E. COMMERCIAL AND LIGHT INDUSTRIAL DEVELOPMENT WILL REQUIRE A MINIMUM 20% OPEN AREA.
- F. OPEN AREA REQUIREMENTS WILL BE CALCULATED ON A NET BASIS EXCLUDING PUBLIC RIGHT OF WAY.
- G. LANDSCAPE BUFFERS AND DETENTION PONDS CAN COUNT TOWARDS OPEN AREA REQUIREMENT. OPEN AREA MAY BE CUMULATIVELY GATHERED INTO LARGER PARCELS (FOR THE PURPOSES OF DEVELOPING A LARGER AND MORE FUNCTIONAL OPEN AREA) AT THE DISCRETION OF THE DEVELOPER AND WITH THE APPROVAL OF THE PLANNING AND DEVELOPER DIRECTOR. THE LOCATION(S) OF THE CUMULATIVELY GATHERED OPEN AREA SHALL BE DESIGNATED AT THE TIME OF EACH PRELIMINARY AND FINAL DEVELOPMENT PLAN THAT IS CONTRIBUTING TO THAT OPEN AREA.
- H. OPEN SPACE LOCATED WITHIN A SINGLE FAMILY DETACHED OR SINGLE FAMILY ATTACHED LOT CAN NOT BE COUNTED TOWARDS OPEN AREA REQUIREMENT.
- I. USABLE OPEN AREA CAN COUNT TOWARDS OPEN AREA REQUIREMENT.

USABLE OPEN AREA

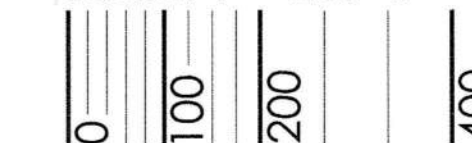
- A. WELTY RIDGE REQUIRES A 10% USABLE OPEN AREA FOR RESIDENTIAL AREAS. FOR PURPOSES OF THIS PUD, THE 10% USABLE OPEN AREA SHALL BE CALCULATED FROM THE TOTAL AREA OF ALL RESIDENTIAL LOTS AND ADJACENT LOCAL ROADWAYS THAT SERVE AS DIRECT ACCESS TO THE RESIDENTIAL LOTS.
- B. USABLE OPEN AREA PROVIDED PER THE REQUIREMENTS OF THIS PUD WILL MEET ALL DEDICATED OPEN SPACE REQUIREMENTS PER THE JOHNSTOWN CODE.
- C. USABLE OPEN AREA MAY BE CUMULATIVELY GATHERED INTO LARGER PARCELS (FOR THE PURPOSES OF DEVELOPING A LARGER AND MORE FUNCTIONAL PARK OR SIMILAR USES) AT THE DISCRETION OF THE DEVELOPER AND WITH THE APPROVAL OF THE PLANNING AND DEVELOPMENT DIRECTOR. THE LOCATION(S) OF THE CUMULATIVELY GATHERED USEABLE OPEN AREA SHALL BE DESIGNATED AT THE TIME OF EACH FINAL PLAT THAT IS CONTRIBUTING TO THAT AREA.
- D. A MINIMUM OF 1 ACRE OF PARK PER 250 RESIDENTIAL UNITS IS REQUIRED.
- E. USABLE OPEN AREA MAY OWNED BY THE TOWN, METRO DISTRICT, OR HOA. OWNERSHIP TO BE DETERMINED AT THE TIME OF PRELIMINARY AND FINAL DEVELOPMENT PLANS
- F. WHERE PRACTICAL USABLE OPEN AREA SHOULD BE CONTIGUOUS.
- G. DETENTION PONDS CAN COUNT TOWARDS USABLE OPEN AREA REQUIREMENTS AS LONG AS THEY MEET THE DEFINITION OF USABLE OPEN AREA PROVIDED IN THIS DOCUMENT. NOT MORE THAN 5% OF THE USABLE OPEN AREA REQUIREMENT CAN BE MET WITH DETENTION PONDS.



LEGEND	
.....	5' PEDESTRIAN WALK
.....	10' PEDESTRIAN WALK
*	PARK
▲	PRIMARY MONUMENTATION
▨	LANDSCAPE BUFFER

TRAILS & OPEN SPACE PLAN

Scale: 1"= 200'-0"



ALL PLANNING ELEMENTS WITHIN THIS ODP ARE SUBJECT TO FURTHER DETAILED REVIEW AND UPDATED REQUIREMENTS OF THE TOWN WITH SUBSEQUENT SUBMITTALS FOR DEVELOPMENT AND CONSTRUCTION PLANS. THESE PLANS ARE INCLUDED TO ILLUSTRATE THE OVERALL CONCEPTS ONLY.

1/28/2020 10:22 AM P:\PLATTE LAND & WATER\GREAT PLAINS WELTY\SUBMITTALS\WELTY ODP\WELTY ODP TRAILS AND OPEN SPACE DWG.

ODP REVISION 02/23/2021
Kimley»Horn

terracina
fo design
 10200 E Grand Ave, Ste A-214
 FT. COCKERILL, CO 80504
 PH: 303.652.8867

PLATTE
 LAND & WATER, LLC

CORE
 CONSULTANTS

#	REVISION DESCRIPTION	DATE	BY
1	APPROVED ODP	JANUARY 23, 2020	

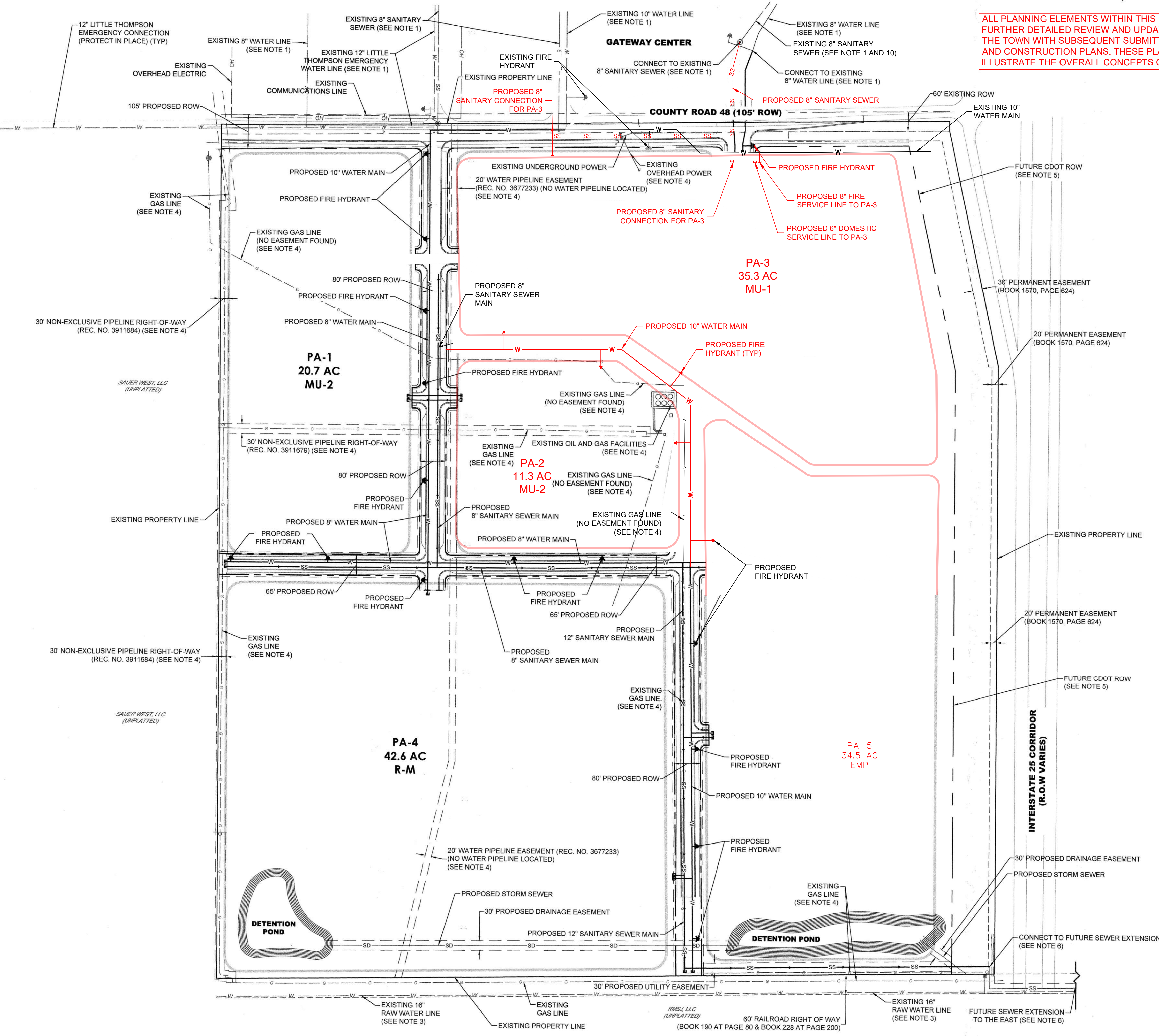
WELTY RIDGE
 JOHNSTOWN, CO
 OUTLINE DEVELOPMENT PLAN
 TRAILS & OPEN SPACE PLAN

DESIGNED BY: JM
 DRAWN BY: KB
 CHECKED BY: JM

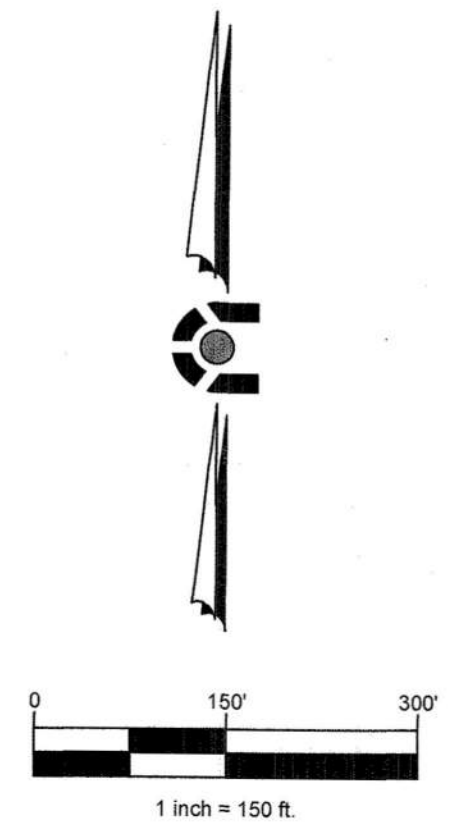
AMENDED
 SHEET
 7 OF 12

OUTLINE DEVELOPMENT PLAN AMENDMENT 1 WELTY RIDGE

LOCATED IN SECTION 10, TOWNSHIP 4 NORTH, RANGE 68 WEST OF THE SIXTH PRINCIPAL MERIDIAN, IN JOHNSTOWN, COUNTY OF WELD, STATE OF COLORADO



ALL PLANNING ELEMENTS WITHIN THIS ODP ARE SUBJECT TO FURTHER DETAILED REVIEW AND UPDATED REQUIREMENTS OF THE TOWN WITH SUBSEQUENT SUBMITTALS FOR DEVELOPMENT AND CONSTRUCTION PLANS. THESE PLANS ARE INCLUDED TO ILLUSTRATE THE OVERALL CONCEPTS ONLY.



- NOTES**
1. THE SIZE AND LOCATION OF ALL KNOWN UNDERGROUND UTILITIES ARE APPROXIMATE AND BASED OFF THE BEST AVAILABLE INFORMATION WHEN SHOWN ON THESE DRAWINGS. EXACT LOCATION OF EXISTING UTILITIES AND TIE-IN POINTS SHALL BE DETERMINED/CONFIRMED DURING FINAL DESIGN. BEFORE COMMENCING NEW CONSTRUCTION, THE CONTRACTOR SHALL BE RESPONSIBLE FOR ALL UNKNOWN UTILITIES.
 2. UTILITY MAINS AND SERVICES ARE SHOWN SCHEMATICALLY AND FINAL PLAT AND CONSTRUCTION DOCUMENT PROCESS THROUGH THE TOWN OF JOHNSTOWN.
 3. THE 16" RAW WATER LINE TO THE SOUTH OF THE WELTY RIDGE PROPERTY IS NON-POTABLE AND WILL NOT PROVIDE A LOOPED CONNECTION TO THE SITE.
 4. EXISTING EASEMENTS AND UTILITIES IN CONFLICT WITH PROPOSED DESIGN SHALL BE VACATED AND REMOVED PRIOR TO CONSTRUCTION. EXACT LIMITS WILL BE DETERMINED DURING FINAL DESIGN.
 5. APPROXIMATE ROW LIMITS BASED OFF PRELIMINARY DESIGNS PROVIDED BY CDOT. FINAL LOCATION WILL BE DETERMINED DURING THE FINAL DESIGN OF THE I-25 WIDENING PROJECT.
 6. AN OFFSET SEWER MAIN IS REQUIRED TO BE CONSTRUCTED TO THE EAST THAT CONNECTS INTO THE EXISTING JOHNSTOWN SANITARY SEWER SYSTEM. SEWER LINE BELOW I-25 SHALL BE BORED AND PERMITTED WITH CDOT. EXACT SIZE AND LOCATION SHALL BE DETERMINED DURING FINAL DESIGN.
 7. SEE SHEET 6 FOR ROADWAY CROSS SECTIONS.

LEGEND

	PROPERTY LINE
	PROPOSED ROW
	PROPOSED UTILITY EASEMENT
	PROPOSED LANDSCAPE BUFFER
	EXISTING ROW
	EXISTING SWALE
	EX. / PR. LIGHT POLE
	EX. / PR. SIGNS
	EX. POWER POLE
	CABLE TV
	ELECTRIC & METER
	FIBER OPTIC LINE & MH
	GAS LINE & METER
	IRRIGATION
	OVERHEAD POWER
	TELEPHONE LINE & MH
	PROPOSED SANITARY MAIN W/ FLOW ARROW
	PROPOSED SANITARY STUB
	PROPOSED WATER MAIN
	FIRE HYDRANT ASSEMBLY
	PROPOSED WATER STUB
	PROPOSED STORM SEWER
	PROPOSED CURB & GUTTER
	PLANNING AREA DELINEATION

ODP REVISION 02/23/2021
Kimley»Horn

terraccina
 design
 10000 E. Grand Ave. Ste. A-314
 Littleton, CO 80120
 PH: 303.622.8607

PLATTE
 LAND & WATER, LLC

CORE
 CONSULTANTS

BY	
DATE	JANUARY 21, 2020
#	REVISION DESCRIPTION
1	APPROVED ODP

WELTY RIDGE
 JOHNSTOWN, CO
 OUTLINE DEVELOPMENT PLAN
 CONCEPTUAL UTILITY PLAN

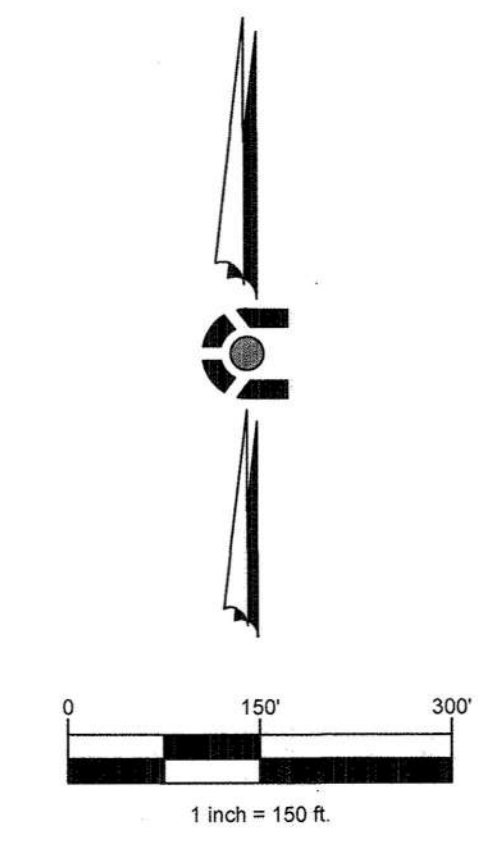
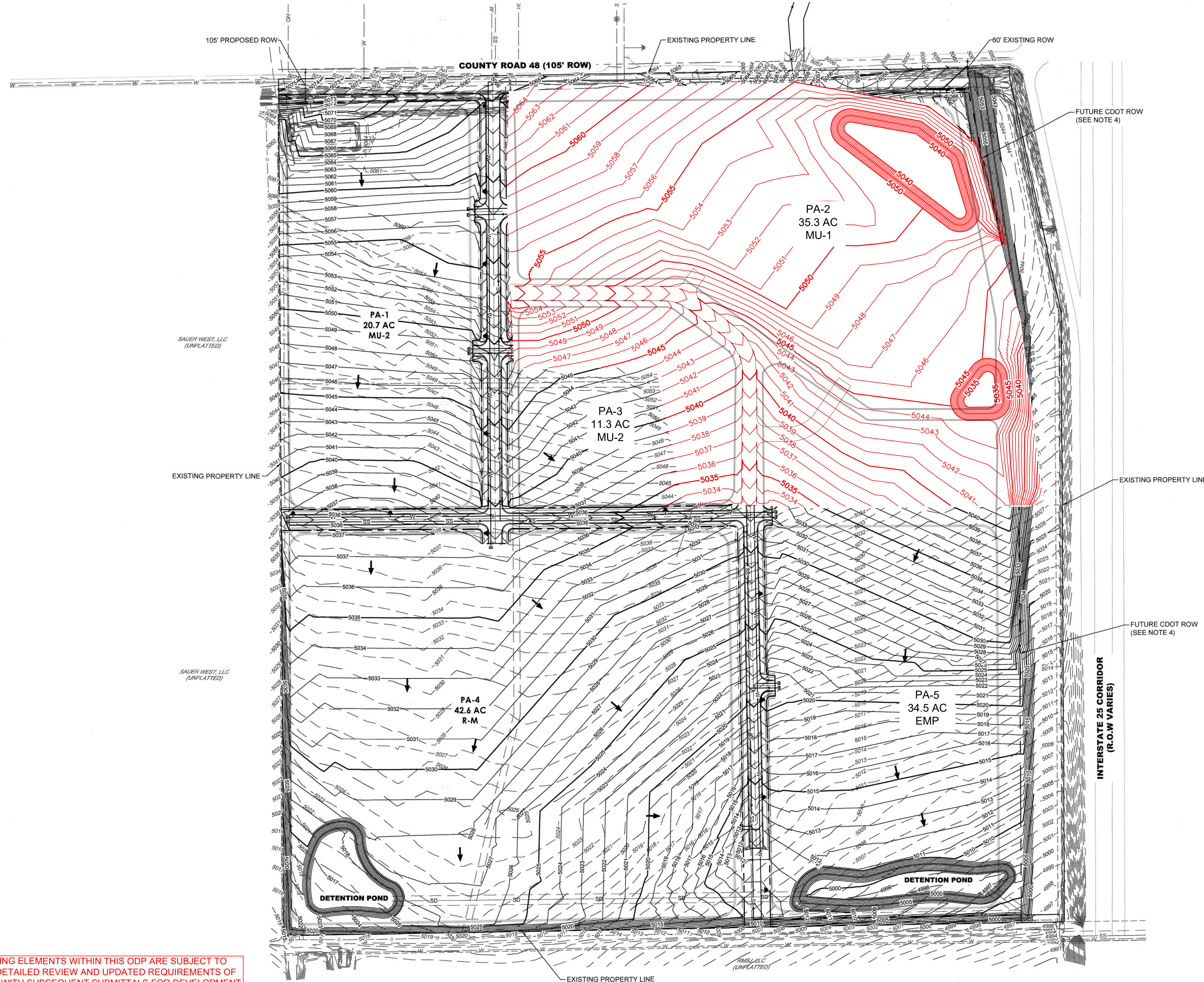
DESIGNED BY: AM
 DRAWN BY: AM
 CHECKED BY: KR

AMENDED
 SHEET
 8 OF 12

1/20/2020 1:58 PM - X:\18-156 GREAT PLAINS\CADD\CIVIL3 - WELTY RIDGE\WELTY RIDGE - ODP-UTILITY PLAN.DWG

OUTLINE DEVELOPMENT PLAN AMENDMENT 1 WELTY RIDGE

LOCATED IN SECTION 10, TOWNSHIP 4 NORTH, RANGE 68 WEST OF THE SIXTH PRINCIPAL MERIDIAN, IN JOHNSTOWN, COUNTY OF WELD, STATE OF COLORADO

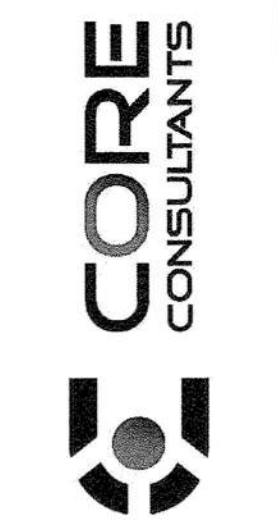


- NOTES**
1. DETENTION POND SIZING AND LOCATIONS ARE CONCEPTUAL AND WILL BE DETERMINED DURING THE PLAT AND CONSTRUCTION DOCUMENT PROCESS THROUGH THE TOWN OF JOHNSTOWN.
 2. THE TOPOGRAPHIC SURVEY AND BOUNDARY SHOWN ARE BASED ON THE FIELD SURVEY WORK OF PLS GROUP (PROJECT #18042.001). FIELD SURVEY WAS COMPLETED ON OR AROUND MAY 22, 2018.
 3. SEE SHEET 6 FOR ROADWAY CROSS SECTIONS.
 4. APPROXIMATE ROW LIMITS BASED OFF PRELIMINARY DESIGNS PROVIDED BY CDOT. FINAL LOCATION WILL BE DETERMINED DURING THE FINAL DESIGN OF THE I-25 WIDENING PROJECT.

LEGEND

	PROPERTY LINE
	PROPOSED CURB & GUTTER
	PROPOSED R.O.W.
	PROPOSED UTILITY EASEMENT
	PROPOSED LANDSCAPE BUFFER
	EXISTING MAJOR CONTOUR
	EXISTING MINOR CONTOUR
	PROPOSED MAJOR CONTOUR
	PROPOSED MINOR CONTOUR
	PLANNING AREA DELINEATION
	FLOW ARROW

ALL PLANNING ELEMENTS WITHIN THIS ODP ARE SUBJECT TO FURTHER DETAILED REVIEW AND UPDATED REQUIREMENTS OF THE TOWN WITH SUBSEQUENT SUBMITTALS FOR DEVELOPMENT AND CONSTRUCTION PLANS. THESE PLANS ARE INCLUDED TO ILLUSTRATE THE OVERALL CONCEPTS ONLY.



#	REVISION DESCRIPTION	DATE	BY
1	APPROVED ODP	JANUARY 22, 2020	

WELTY RIDGE
 JOHNSTOWN, CO
 OUTLINE DEVELOPMENT PLAN
 PRELIMINARY GRADING PLAN

DESIGNED BY: AM
 DRAWN BY: AM
 CHECKED BY: KR

1/20/2020 1:53 PM, X:\18-156 GREAT PLAINS\CADD\CIVIL2_WELTY RIDGE\WELTY RIDGE - ODP GRADING PLAN.DWG

OUTLINE DEVELOPMENT PLAN AMENDMENT 1 WELTY RIDGE

LOCATED IN SECTION 10, TOWNSHIP 4 NORTH, RANGE 68 WEST OF THE SIXTH PRINCIPAL MERIDIAN, IN JOHNSTOWN, COUNTY OF WELD, STATE OF COLORADO

DESIGN GUIDELINES

PART 1 - INTRODUCTION

1.1 STATEMENT OF INTENT

WELTY RIDGE IS A +/- 145 ACRE MASTER-PLANNED COMMUNITY LOCATED WEST OF INTERSTATE 25 IN THE SOUTHWEST CORNER OF THE I-25 & WCR48/SH-60. THIS MIXED USE PROJECT INCLUDES PARCELS DESIGNATED FOR MULTIPLE TYPES OF RESIDENTIAL, RETAIL, COMMERCIAL, LIGHT INDUSTRIAL AND OFFICE USES. THE OVERALL CHARACTER OF WELTY RIDGE MUST BE EVIDENT AND MAINTAINED TO ENSURE THE QUALITY AND COHESIVENESS DESIRED IN THIS EMERGING PART OF NORTHERN COLORADO. THE GUIDELINES WILL SERVE AS A DESIGN CONCEPT FOR ULTIMATE DESIGN AND DEVELOPMENT. HIGH QUALITY DEVELOPMENT IS ENCOURAGED ALONG THE INTERSTATE 25 CORRIDOR IN GENERAL. WELTY RIDGE WILL BE VISIBLE FROM THE INTERSTATE, AND ITS DEVELOPMENT WILL FORM A FIRST IMPRESSION OF THE COMMUNITY.

THE DESIGN GUIDELINES SHALL BE UTILIZED BY RESIDENTS, DEVELOPERS, ARCHITECTS, ENGINEERS AND PLANNERS FOR DESIGN AND CONSTRUCTION DIRECTION WITHIN THIS PUD. ALL DEVELOPMENTS WITHIN WELTY RIDGE ARE SUBJECT TO THE DESIGN GUIDELINES CONTAINED HEREIN. IN CASES WHERE THIS DOCUMENT IS SILENT, THE TOWN OF JOHNSTOWN STANDARDS AND REGULATIONS SHALL APPLY.

PART 2 - GENERAL DESIGN GUIDELINES

2.1 APPLICABILITY

THIS SECTION APPLIES TO ALL DEVELOPMENT WITHIN WELTY RIDGE AND PROVIDES GENERAL STANDARDS UPON WHICH THE SUBSEQUENT SECTIONS WILL BUILD TO PROVIDE GREATER CLARITY FOR SPECIFIC LAND USES. ALL GOVERNING LOCAL CODES, REGULATIONS, AND STATUTES ENFORCED BY THE TOWN OF JOHNSTOWN WILL APPLY.

2.2 LANDSCAPING

2.2.1 LANDSCAPE DESIGN PRINCIPLES

ALL DEVELOPMENT SHALL DEMONSTRATE ADHERENCE TO THE FOLLOWING LANDSCAPE DESIGN PRINCIPLES:

- DESIGN TO PROVIDE AN ATTRACTIVE, COMFORTABLE ENVIRONMENT FOR USERS WHILE MINIMIZING MAINTENANCE NEEDS, IRRIGATION WATER REQUIREMENTS AND THE USE OF HERBICIDES AND PESTICIDES.
- DESIGN LANDSCAPES TO CREATE A NATURALIZED APPEARANCE. USE PLANT MATERIALS THAT ARE INDIGENOUS TO NORTHERN COLORADO WHERE POSSIBLE. ONLY USE INTRODUCED SPECIES IN ORDER TO ACHIEVE DESIGN OBJECTIVES THAT CANNOT BE ACHIEVED WITH THE USE OF NATIVE SPECIES.
- COORDINATE THE DESIGN OF THE LANDSCAPE WITH SITE EROSION PROTECTION, STORM DRAINAGE AND WATER QUALITY IMPROVEMENT SYSTEMS.
- DESIGN AND MANAGE IRRIGATION SYSTEMS TO ACHIEVE PEAK EFFICIENCY.

2.2.2 STREETScape DESIGN

WELTY RIDGE ENTRIES WILL CONTAIN BOTH SIGNAGE AND LANDSCAPING THAT TIE INTO THE OVERALL STREETScape DESIGN. THE LAND USE PLAN (SHEET 2) ILLUSTRATES THE MAJOR AND MINOR ENTRIES INTO THE SITE. IN ORDER TO CREATE AN APPROPRIATE LANDSCAPE CORRIDOR ALONG CR48, LARGE MASSES OF TREES AND SHRUBS ARE REQUIRED. THE RIGHT-OF-WAY (ROW) WILL BE PRIMARILY DROUGHT-TOLERANT TURF OR IRRIGATED NATIVE SEED. THIS TREATMENT WILL TRANSITION TO DRIFTS OF SHRUB/PERENNIAL BEDS AND TREE GROUPINGS THAT MEANDER FROM JUST INSIDE THE ROW TO THE EDGE OF LANDSCAPE BUFFERS AND BACK. THE GOAL IS TO AVOID A STRAIGHT-LINE TREATMENT AT THE EDGE OF THE ROW. WALKS WILL BE DETACHED AND MEANDER WITHIN THE ROW AND OUTSIDE OF THE ROW INTO THE LANDSCAPE BUFFER IF DESIRED. MEDIANS WILL BE PLANTED IN A SIMILAR FASHION OR WILL BE CONSTRUCTED OF COLORED & STAMPED CONCRETE (SHEET 12, EXHIBIT A).

COLLECTOR & ARTERIAL STREETS:

PLANTING OF ARTERIAL AND COLLECTOR STREETS WILL BE TREATED IN A SIMILAR FASHION IN ORDER TO CREATE A UNIFIED AND SIGNIFICANT STREETScape IMAGE. THE STREETScape DESIGN SHALL EMPHASIZE XERISCAPE PRINCIPLES AND A UNIQUE LOOK THAT SETS WELTY RIDGE APART. TREES AND PERENNIALS SHALL BE PLANTED WITHIN THE PUBLIC ROW, WHILE SHRUBS MAY BE PLANTED OUTSIDE THE PUBLIC ROW. MEDIANS WILL BE PLANTED IN A SIMILAR FASHION OR WILL BE CONSTRUCTED OF COLORED & STAMPED CONCRETE.

ARTERIAL LANDSCAPE BUFFER:

A 30' AVERAGE LANDSCAPE BUFFER WILL BE PROVIDED ALONG WCR48 WITH A MINIMUM WIDTH OF 20'.

SIGHT DISTANCE LINES:

NO PLANTING OVER 30" IN HEIGHT SHALL OCCUR WITHIN A SIGHT DISTANCE LINES. REFER TO AASHTO REQUIREMENTS REGARDING SIGHT DISTANCE TRIANGLES.

2.3 PARKS, OPEN AREA, REGIONAL DETENTION AND NATURAL AREAS

THE DESIGN OF PARKS, OPEN AREA, DETENTION AND NATURAL AREAS SHALL MEET THE CRITERIA AS ESTABLISHED IN THE JOHNSTOWN/MILLIKEN PARKS, TRAILS, RECREATION AND OPEN SPACE PLAN. FINAL DEVELOPMENT PLANS MAY BE SUBMITTED IN STAGES BY PHASE. AS SUCH, THE OPEN AREA DESIGN, APPROVAL AND LANDSCAPE INSTALLATION WILL OCCUR AS THE LOTS DEVELOP.

2.4 SITE SIGNAGE

2.4.1 PURPOSE

THE OBJECTIVE OF THE WELTY RIDGE SIGNAGE PROGRAM IS TO HELP CREATE A UNIFIED IMAGE FOR THE COMMUNITY. THE WELTY RIDGE SIGNAGE PROGRAM SHALL ADHERE TO THE FOLLOWING:

- ALL FREESTANDING SIGNAGE (EXCEPT FOR THE SIGN ON PA-3, EXHIBIT D ON SHEET 12) WITHIN THE DEVELOPMENT WILL BEAR THE STYLE AND LOGO OF WELTY RIDGE, HOWEVER INDIVIDUAL LOGOS AND GRAPHICS ARE ALLOWED ON THE SIGN FACE. FREESTANDING SIGNS LOCATED THROUGHOUT THE DEVELOPMENT ARE UNIFIED THROUGH THE USE OF SIMILAR GEOMETRY AND A REPETITION OF A COMMON MATERIALS PALETTE.
- BUILDING MOUNTED SIGNS ARE REGULATED BY LIMITING SIZE. HOWEVER, TENANT LOGOS AND GRAPHICS ARE ALLOWED.
- NO BLINKING LIGHT SIGNAGE WILL BE ALLOWED
- ONE MULTI-TENANT FREESTANDING SIGN SHALL BE ALLOWED ON I-25 WITH A MAXIMUM HEIGHT OF 45' (SHEET 12, EXHIBIT C)
- ONE SINGLE-TENANT OR MULTI-TENANT SIGN SHALL BE ALLOWED IN PA-3 (SEE SHEET 12, EXHIBIT D).

2.5 FENCING & WALLS

CHAIN LINK IS ONLY ACCEPTABLE IN THE "EMP" AREA BY INDUSTRIAL USES AND MUST BE VINYL COATED. CHAIN LINK IS NOT PERMITTED WITH ANY OTHER USE. OTHER FENCING MATERIALS SUCH AS SIMULATED WROUGHT IRON AND / OR CONCRETE OR MASONRY MAY BE REQUIRED DEPENDING UPON SCREENING NEEDS AND COMPATIBILITY WITH ADJACENT USES. NO WOOD RETAINING WALLS ARE ALLOWED (NONRESIDENTIAL ONLY). FENCING AND WALLS SHALL MATCH PRIMARY BUILDING ARCHITECTURE.

2.6 DRIVE-THROUGH FACILITIES

DRIVE-THROUGH FACILITIES ARE A CONVENIENT SERVICE; HOWEVER, THEY CAN CREATE BARRIERS TO PEDESTRIAN MOVEMENT AND PRESENT AN UNATTRACTIVE APPEARANCE UNLESS THEY ARE THOUGHTFULLY DESIGNED AND LOCATED.

DRIVE THROUGH WINDOWS, MENU BOARDS AND STACKING AREAS SHALL BE SUBJECT TO THE SAME SETBACK AND SCREENING REQUIREMENTS AS PARKING LOTS.

PART 3 - RESIDENTIAL DISTRICTS

THESE STANDARDS REPRESENT MINIMUM ARCHITECTURE AND DEVELOPMENT STANDARDS FOR THE RESIDENTIAL DISTRICTS IN AN EFFORT TO CREATE A COHESIVE OVERALL WELTY RIDGE DEVELOPMENT ACROSS MULTIPLE BUILDERS AND PRODUCTS. ADDITIONAL ARCHITECTURAL STANDARDS MAY BE INCLUDED AS MORE DETAILED PRELIMINARY AND FINAL DEVELOPMENT PLANS ARE CREATED FOR EACH PLANNING AREA, PHASE, AND/OR RESIDENTIAL PRODUCT.

3.1 SINGLE FAMILY ATTACHED AND DETACHED ARCHITECTURAL STANDARDS

3.1.1 APPLICABILITY

ALL SINGLE-FAMILY DETACHED AND ATTACHED DWELLINGS SHALL CONFORM TO ALL APPLICABLE REQUIREMENTS OF THESE DEVELOPMENT STANDARDS, AS WELL AS APPLICABLE REQUIREMENTS OF THE ADOPTED BUILDING CODE REQUIREMENTS.

3.1.2 EXTERIOR CHANGES

EXTERIOR MATERIAL CHANGES SHOULD OCCUR AT CHANGES IN THE PLANE OF THE BUILDING, NOT EXCLUSIVELY AT THE OUTSIDE CORNERS.

3.1.3 GARAGES

ALL SINGLE FAMILY DETACHED HOMES SHALL INCLUDE A MINIMUM 2-CAR GARAGE, EITHER ATTACHED OR DETACHED, AS PART OF THE NEW CONSTRUCTION OR PLACEMENT.

3.1.4 PRODUCT VARIATION

APPLICABILITY:

THE FOLLOWING HOUSING MODEL VARIETY STANDARDS SHALL APPLY TO ALL NEW RESIDENTIAL SUBDIVISIONS AND DEVELOPMENTS. THESE STANDARDS ARE INTENDED TO PREVENT MONOTONOUS STREETScapeS AND OFFER CONSUMERS A WIDE CHOICE OF HOUSING STYLES.

EACH HOUSING MODEL SHALL PROVIDE AND EXHIBIT AT LEAST THREE FEATURES THAT CLEARLY AND OBVIOUSLY DISTINGUISH THEM FROM OTHER HOUSING MODELS. THESE FEATURES CAN INCLUDE ANY OF THE FOLLOWING:

- BUILDING MASS - BUILDING MASS IS CONSIDERED TO BE THE OUTLINE OF THE STRUCTURE. THIS IS DETERMINED BY THE HEIGHT, WIDTH, AND DEPTH OF THE STRUCTURE.
- BUILDING FORM - BUILDING FORM IS CONSIDERED TO BE THE STYLE OF THE HOME, INCLUDING RANCH, TRI-LEVEL OR TWO-STORY STRUCTURES.
- ROOF TYPE - ROOF TYPES CONSIST OF MANSARD, HIP, GAMBREL, GABLE, AND FRONT-TO-BACK (SHED STYLE). DIFFERENTIATION MAY ALSO BE ACHIEVED THROUGH THE USE OF ROOF DORMERS, GABLES, AND HIPS. FLAT OR A-FRAMES ROOFS SHOULD BE AVOIDED UNLESS APPROPRIATE TO THE ARCHITECTURAL STYLE.
- WINDOWS AND DOORS - THE VERTICAL OR HORIZONTAL VARIATION IN THE PLACEMENT OF AT LEAST TWO WINDOWS AND/OR DOORS ON THE FRONT FACADE ELEVATION OR WINDOW SHAPES THAT ARE SUBSTANTIALLY DIFFERENT. THIS STANDARD ALSO APPLIES TO ANY ELEVATION FACING A STREET, OPEN SPACE OR PUBLIC / PRIVATE PARK.
- THE USE OF AT LEAST TWO DIFFERENT MATERIALS ON THE FRONT FACADE ELEVATION.
- GARAGES. VARIATION IN THE LOCATION AND/OR PROPORTION OF GARAGES AND GARAGE DOORS, SUCH AS ALLEY-LOADED GARAGES, SIDE-LOADED GARAGES, ETC. (2-CAR GARAGE VS. 3-CAR GARAGE OF THE SAME ELEVATION DO NOT MEET THE INTENT).
- VARIATIONS IN THE LOCATION, WIDTH, AND PROPORTION OF FRONT PORCHES (MIN. SIZE 6'x6").
- MINOR COSMETIC CHANGES SUCH AS DIFFERENT PAINT COLOR, REVERSING OR CREATING MIRRORED IMAGES OF THE EXTERIOR ARCHITECTURAL ELEVATIONS, SHUTTERS, DECORATIVE BRACKETS, OR USING DIFFERENT BRICK OR STONE COLOR SHALL NOT MEET THE INTENT OF THIS SECTION.

THE SAME HOUSING MODEL WITH THE IDENTICAL STREET ELEVATION DESIGN (OR NEARLY IDENTICAL) SHALL NOT BE PLACED LESS THAN THREE AWAY OR DIRECTLY ACROSS THE STREET FROM ONE ANOTHER. "ACROSS THE STREET" IS DEFINED AS LOTS THAT OVERLAP EACH OTHER WHEN THE SIDE LOT LINES ARE EXTENDED ACROSS THE STREET TO THE OPPOSITE LOT. THE SAME HOUSING MODEL USED AT THE END OF ONE BLOCK SHALL NOT BE REPEATED ON THE FIRST LOT OF THE NEIGHBORING BLOCK.

IDENTICAL OR NEARLY IDENTICAL STREET ELEVATION DESIGN MEANS LITTLE OR NO VARIATION IN THE ARTICULATION OF THE FAÇADE, HEIGHT OR WIDTH OF THE FAÇADE, PLACEMENT OF THE PRIMARY ENTRANCES, PORCHES, NUMBER AND PLACEMENT OF WINDOWS, AND OTHER MAJOR ARCHITECTURAL FEATURES.

3.2 CLUSTERED SINGLE FAMILY RESIDENTIAL ARCHITECTURAL STANDARDS

3.2.1 GENERAL

CLUSTER HOMES ADJACENT TO A PUBLIC STREET AND LOCATED ON A MOTOR COURT OR GREEN COURT SHALL HAVE A SIDE FACING GARAGE. THE GARAGE SHALL FACE THE MOTOR COURT OR SHARED DRIVE NOT THE PUBLIC STREET (SHEET 12, EXHIBIT B).

3.2.2 ACCESS

IF FOUR OR FEWER UNITS ACCESS FROM A SHARED DRIVE, THE MINIMUM DRIVE WIDTH IS 16 FEET (SEE CLUSTER HOME EXAMPLE B - MOTOR COURT ON SHEET 10). IF 5 OR MORE UNITS ACCESS OFF A COMMON DRIVE THE MINIMUM DRIVE WIDTH IS 23 FEET (SEE CLUSTER HOME EXAMPLE A - GREEN COURT ON SHEET 10).

GARAGES FACING ONTO SHARED DRIVES MUST HAVE A MINIMUM FACE TO FACE SEPARATION OF 30 FEET.

3.1.3 FACADES

EXTERIOR FACADES SHALL COMPLY WITH THE CURRENT STANDARDS AND DESIGN GUIDELINES EXCEPT AS FOLLOWS:

IN ORDER TO BE CONSIDERED A DISTINCT ELEVATION, EACH ELEVATION SHALL INCORPORATE AT LEAST THREE OF THE FOLLOWING:

- PLACEMENT OF WINDOWS ON THE FRONT FAÇADE ELEVATION INCLUDE AT LEAST A TWO-FOOT VERTICAL OR HORIZONTAL VARIATION IN SIZE OR LOCATION.
- THE USE OF DIFFERENT MATERIALS OR VARIATIONS OF THE SAME MATERIAL ON THE FRONT FAÇADE ELEVATION.
- VARIATIONS IN FRONT PLANE.
- VARIATION IN ROOF TYPE, GABLE AND HIP.

NO MORE THAN TWO (2) OF THE SAME MODEL ELEVATIONS ARE PERMITTED WITHIN A MOTOR OR GREEN COURT. IF TWO MODEL ELEVATIONS ARE LOCATED WITHIN THE SAME MOTOR COURT THEY MUST USE DIFFERENT COLORS OR MATERIALS.

NO HOME MODEL ELEVATION SHALL BE REPEATED DIRECTLY ACROSS ANY STREET. THIS APPLIES TO STREET SIDE HOMES ONLY. THIS DOES NOT APPLY TO UNITS LOCATED INTERIOR TO THE MOTOR COURT OR GREEN COURT.

ALL "STREET SIDE CLUSTER HOMES" SHALL MEET THE FOLLOWING:

- THE FRONT FAÇADE OF THE HOME INCORPORATES A COVERED PORCH.

3.3 MULTI-FAMILY RESIDENTIAL ARCHITECTURAL STANDARDS

3.3.1 BUILDING DESIGN

THE ARCHITECTURAL DESIGN APPROACH SHALL EMPHASIZE COMPATIBILITY WITH EXISTING DEVELOPMENT AND SITE DESIGN.

THE DESIGN OF NEW STRUCTURES IN OR ADJACENT TO EXISTING DEVELOPED AREAS SHALL BE COMPATIBLE WITH, OR AN UPGRADE TO, THE ESTABLISHED ARCHITECTURAL CHARACTER OF SUCH AREAS. COMPATIBILITY MAY BE ACHIEVED THROUGH TECHNIQUES SUCH AS:

- REPETITION OF ROOF LINES.
- USE OF SIMILAR PROPORTIONS IN BUILDING MASS AND OUTDOOR SPACES.
- SIMILAR RELATIONSHIPS TO THE STREET.
- SIMILAR WINDOWS AND DOOR PATTERNS.
- BUILDING MATERIALS WITH SIMILAR COLORS AND TEXTURES.

TREAT ALL SIDES WITH SIMILAR MATERIALS. MULTI-FAMILY BUILDING FACADES SHALL BE ARTICULATED WITH PORCHES, BALCONIES, BAYS OR OTHER OFFSETS.

ACCESSORY BUILDINGS SHOULD BE SIMILAR IN CHARACTER AND MATERIALS AS PRIMARY BUILDINGS.

3.3.2 FACADES

FACADES THAT FACE A STREET OR PARKING AREA SHALL NOT HAVE A BLANK, UNINTERRUPTED LENGTH EXCEEDING 50 FEET WITHOUT INCLUDING AT LEAST TWO (2) OF THE FOLLOWING:

- CHANGE IN PLANE.
- CHANGE IN COLOR, TEXTURE OR PATTERN, MATERIAL.
- WINDOWS.
- COLUMNS, PIERS OR EQUIVALENT ELEMENT THAT SUBDIVIDES THE WALL.

FACADES GREATER THAN 150 FEET IN LENGTH SHALL INCORPORATE WALL PLANE PROJECTIONS OR RECESSES HAVING A DEPTH OF AT LEAST 2% OF THE LENGTH OF THE FACADE AND OCCUPY AT LEAST 20% OF THE LENGTH OF THE FACADE.

3.3.3 BUILDING ENTRANCES

PRIMARY BUILDING ENTRANCES SHALL BE CLEARLY DEFINED AND PROVIDE SHELTER, AND INCLUDE A MINIMUM OF TWO (2) OF THE FOLLOWING:

- CANOPY, ARCADE OR PORTICO.
- OVERHANG OR RECESS.
- RAISED CORNICED PARAPET.
- PEAKED ROOF OR ARCH.
- ARCHITECTURAL DETAIL SUCH AS COLUMNS, TILE WORK, STONE OR MOLDINGS INTEGRATED INTO THE BUILDING STRUCTURE.
- INTEGRAL PLANTERS OR WING WALLS THAT INCORPORATE LANDSCAPED AREAS AND/OR PLACES FOR SITTING.
- SPECIAL LANDSCAPE OR SITE FEATURE(S).

3.3.4 ROOF AND TOP TREATMENTS

ROOFTOP MECHANICAL EQUIPMENT MUST BE NON-OBTRUSIVE, SCREENED FROM VIEW OR DESIGNED TO BE INTEGRAL COMPONENTS OF THE BUILDING.

THE AVERAGE PARAPET HEIGHT MAY NOT EXCEED 15% OF THE SUPPORTING WALL HEIGHT.

LARGE SLOPED ROOFS MUST HAVE VARIATIONS IN HEIGHT OR OFFSETS TO BREAK UP THE LARGE PLANE WITH A MAXIMUM 100 LINEAR FEET OF ONE PLANE.

ACCESSORY BUILDINGS SHALL BE OF THE SAME CHARACTER AND MATERIALS AS PRIMARY BUILDINGS.

ODEP REVISION 02/23/2021
Kimley-Horn

terracing
design
td
10200 E. Grand Ave., Ste. A-314
Denver, CO 80231
PH: 303.652.8807

PLATTE
LAND & WATER, LLC

CORE
CONSULTANTS

BY

DATE

REVISION DESCRIPTION

#

1

APPROVED ODP

APPROVED ODP

APPROVED ODP

APPROVED ODP

APPROVED ODP

APPROVED ODP

APPROVED ODP

APPROVED ODP

APPROVED ODP

APPROVED ODP

APPROVED ODP

APPROVED ODP

APPROVED ODP

APPROVED ODP

APPROVED ODP

APPROVED ODP

APPROVED ODP

APPROVED ODP

APPROVED ODP

APPROVED ODP

APPROVED ODP

APPROVED ODP

APPROVED ODP

OUTLINE DEVELOPMENT PLAN AMENDMENT 1 WELTY RIDGE

LOCATED IN SECTION 10, TOWNSHIP 4 NORTH, RANGE 68 WEST OF THE SIXTH PRINCIPAL MERIDIAN, IN JOHNSTOWN, COUNTY OF WELD, STATE OF COLORADO

PART 4 - COMMERCIAL, OFFICE AND LIGHT INDUSTRIAL ARCHITECTURAL STANDARDS

4.1 GENERAL

THESE DESIGN STANDARDS APPLY TO THE CREATION OF AND IMPROVEMENTS TO HIGH VISIBILITY, NEIGHBORHOOD, COMMUNITY AND REGIONAL-SCALE COMMERCIAL AREAS. REQUIREMENTS APPLICABLE TO THE OVERALL NATURE OF THE PUD CAN BE FOUND IN THE GENERAL DESIGN GUIDELINES (PART 2) AND SHOULD BE VIEWED AS COMPLEMENTARY.

4.1.1 CONTEXT/SCALE

IN ORDER TO ACHIEVE COHESIVE DESIGNS WITHIN EACH AREA OF DEVELOPMENT, ATTENTION MUST BE PAID TO BUILDINGS AND FEATURES SURROUNDING THE PROPOSED IMPROVEMENT.

THE DESIGN OF BUILDINGS WHICH FACE PUBLIC STREETS, ADJACENT DEVELOPMENTS, OR CONNECTED PEDESTRIAN SPACES, SHALL EMPLOY, ALONG A MINIMUM OF FORTY (40) PERCENT OF THE FACADE, AT LEAST TWO OF THE FOLLOWING IN AN EFFORT TO FORM COHESIVE DEVELOPMENT, DEFINE THE SPACES, AND TO BRING A PEDESTRIAN SCALE TO THE FACADES. THIS REQUIREMENT IS FOR ALL ELEVATIONS (360° DESIGN)

1. SIMILAR WINDOWS AND PATTERNS
2. REPETITION OF ROOF LINES
3. SIMILAR BUILDING MATERIALS AND TEXTURES
4. SHADING DEVICES (INCLUDING ARCADES, AWNINGS AND ARBORS)
5. SIMILAR PROPORTIONS OF ELEMENTS

4.1.2 ARTICULATION

WALL DESIGN FOR ALL FACADES SHALL VARY AT LEAST EVERY FIFTY (50) HORIZONTAL FEET BY USE OF AT LEAST TWO (2) OF THE FOLLOWING:

1. CHANGES IN COLOR, TEXTURE, OR MATERIALS
2. CHANGES IN WALL PLANE PROJECTIONS, REVEALS, ENTRANCES, AND RECESSES WITH A MINIMUM CHANGE OF ONE FOOT.
3. CHANGE IN GLAZING / CURTAIN WALL
4. VARIETY IN ROOFS: SUCH AS PITCH, HEIGHT, AND STYLE.
5. ENHANCED ARTICULATION ALONG PEDESTRIAN PATHS

4.1.3 BUILDING ENTRANCES

PUBLIC BUILDING ENTRANCES SHOULD BE CLEARLY DEFINED AND FEATURE AT LEAST TWO (2) OF THE FOLLOWING ELEMENTS:

1. CANOPIES OR PORTICOS
2. OVERHANGS OR RECESSES OR PROJECTIONS
3. ARCADES
4. ARCHES
5. DISPLAY WINDOWS ALONG SIDEWALKS
6. INTEGRAL PLANTERS OR WING WALLS WITH INCORPORATED LANDSCAPE AREAS AND/OR PLACES FOR SITTING
7. DISTINCTIVE ROOF FORMS
8. AWNINGS
9. COLUMNS, TILE WORK, MOLDINGS, AND STONE INTEGRATED INTO THE DESIGN OF THE BUILDING

4.1.4 MECHANICAL EQUIPMENT, LOADING AREA, AND OUTDOOR STORAGE

ALL LOADING DOCKS, ACCESSORY OUTDOOR STORAGE AND SERVICE YARDS SHALL BE LOCATED TO THE SIDE AND REAR YARDS OF BUILDINGS.

ALL OUTDOOR STORAGE YARDS, LOADING DOCKS, SERVICE AREAS AND MECHANICAL EQUIPMENT SHALL BE CONCEALED FROM VIEW FROM RESIDENTIAL USES AND PUBLIC ROW BY A COMBINATION OF SCREENS AND SCREENING MATERIAL (PLANTS) AT LEAST AS HIGH AS THE EQUIPMENT OR AREAS THEY HIDE. THEY SHALL BE DESIGNED WITH COLORS AND MATERIALS SIMILAR TO THOSE USED ON THE BUILDING ARCHITECTURE. PLANTS USED IN COMBINATION WITH SCREENS/FENCING SHALL BE EVERGREEN.

THE OUTDOOR STORAGE REQUIREMENT DOES NOT PROHIBIT THE USE OF THE EXTERIOR SALES SUCH AS GRILLS, FIRE-PITS, ETC. EXTERIOR SALE ITEMS SHALL NOT BE REQUIRED TO BE CONCEALED FROM VIEW.

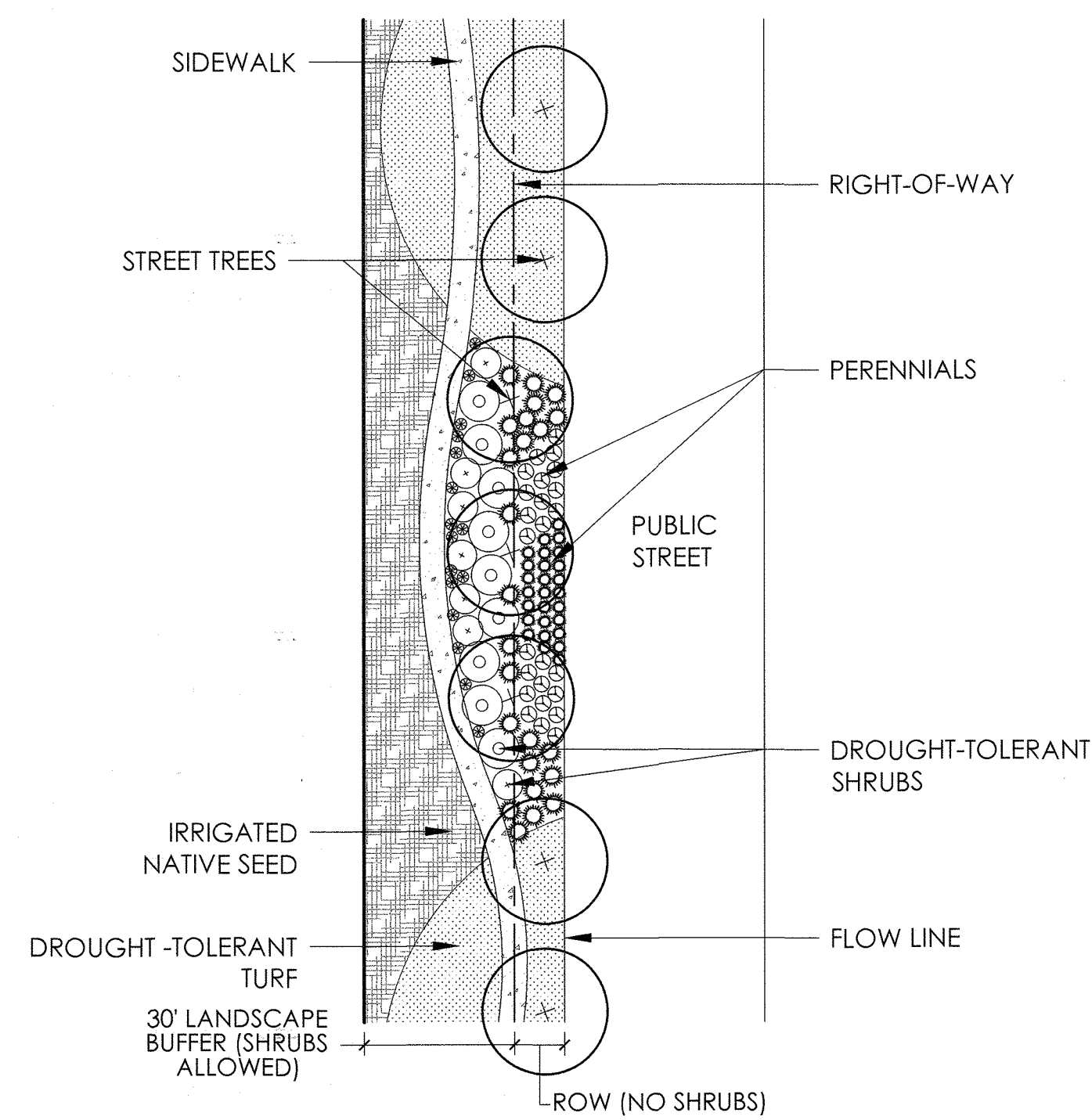
4.1.5 FENCES

ALL FENCING SHALL CONSIST OF WOODEN, STAKE, PARCEL PICKET, SPLIT RAIL, VINYL, WROUGHT IRON, AND/OR MASONRY. CHAIN LINK WILL ONLY BE ACCEPTED IN "EMP" AREAS FOR INDUSTRIAL USES.

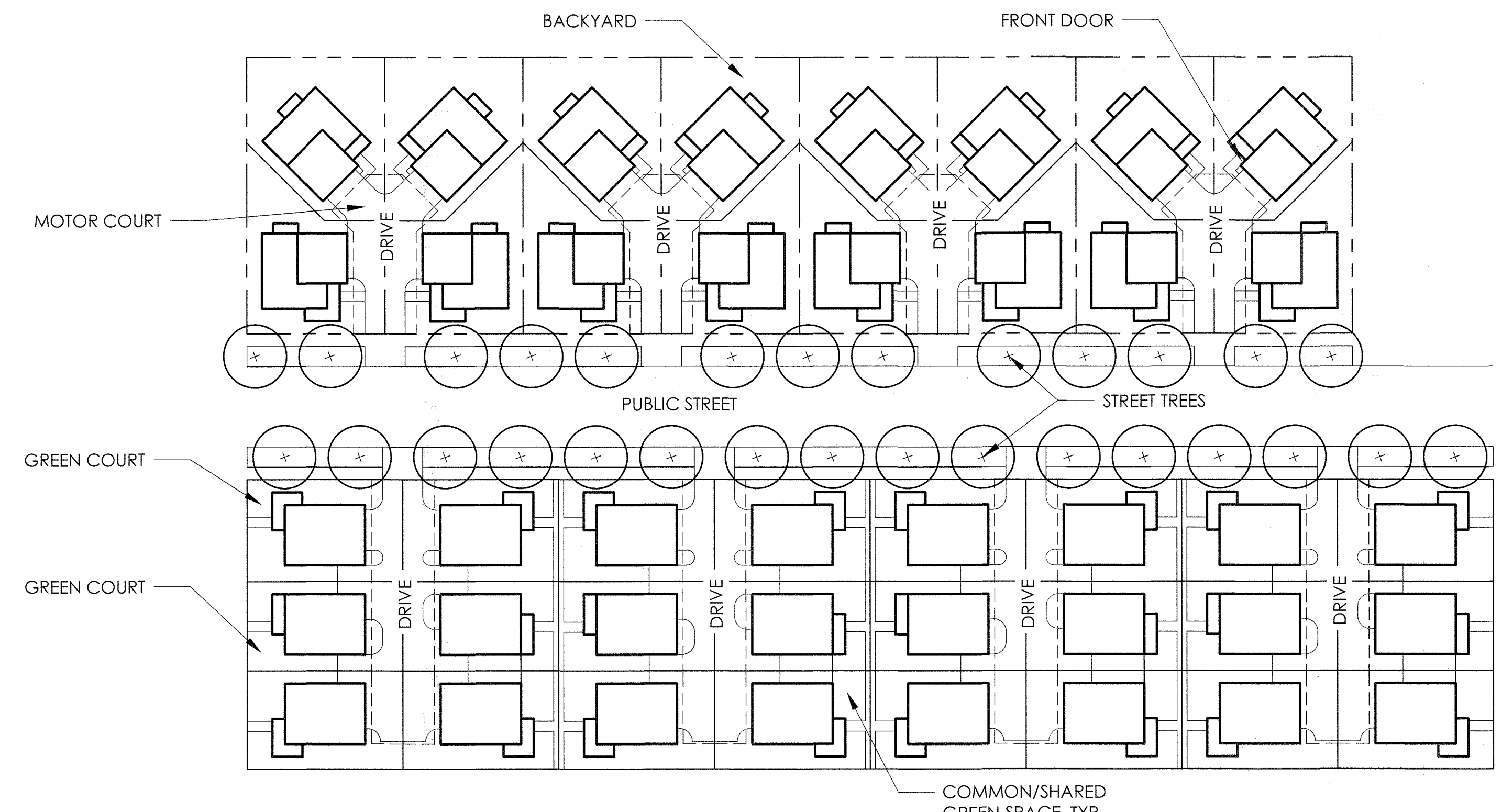
EXCESSIVE FENCING SHALL BE AVOIDED THROUGH THE USE OF STAGGERING, LANDSCAPE, BUFFER, AND ANCHOR MATERIALS.

4.1.6 RETAINING WALLS

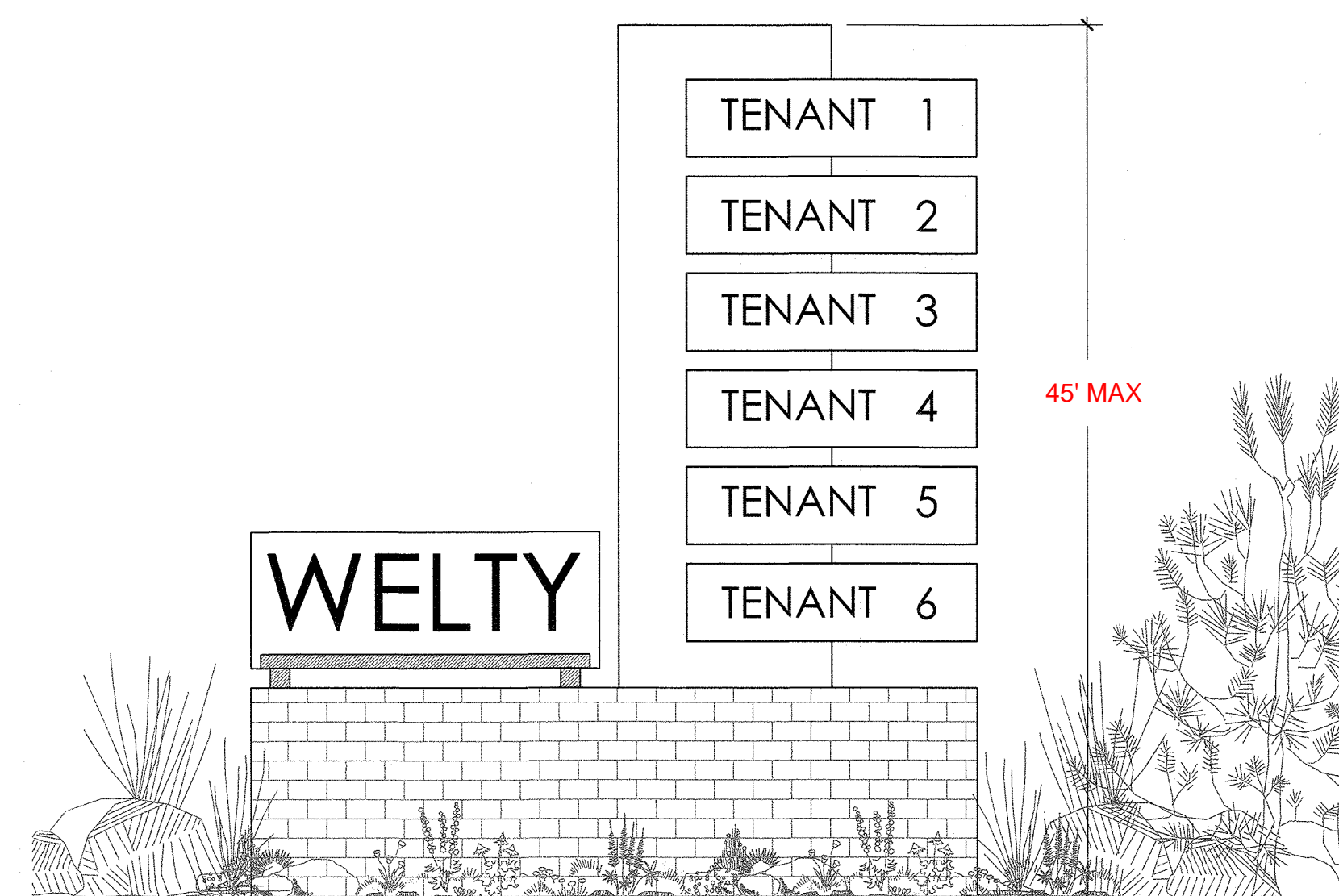
ANY PORTION OF CONCRETE OR MASONRY RETAINING WALLS VISIBLE FROM PUBLIC STREETS WILL BE COVERED WITH DECORATIVE MATERIALS SUCH AS STONE, BRICK OR STUCCO.



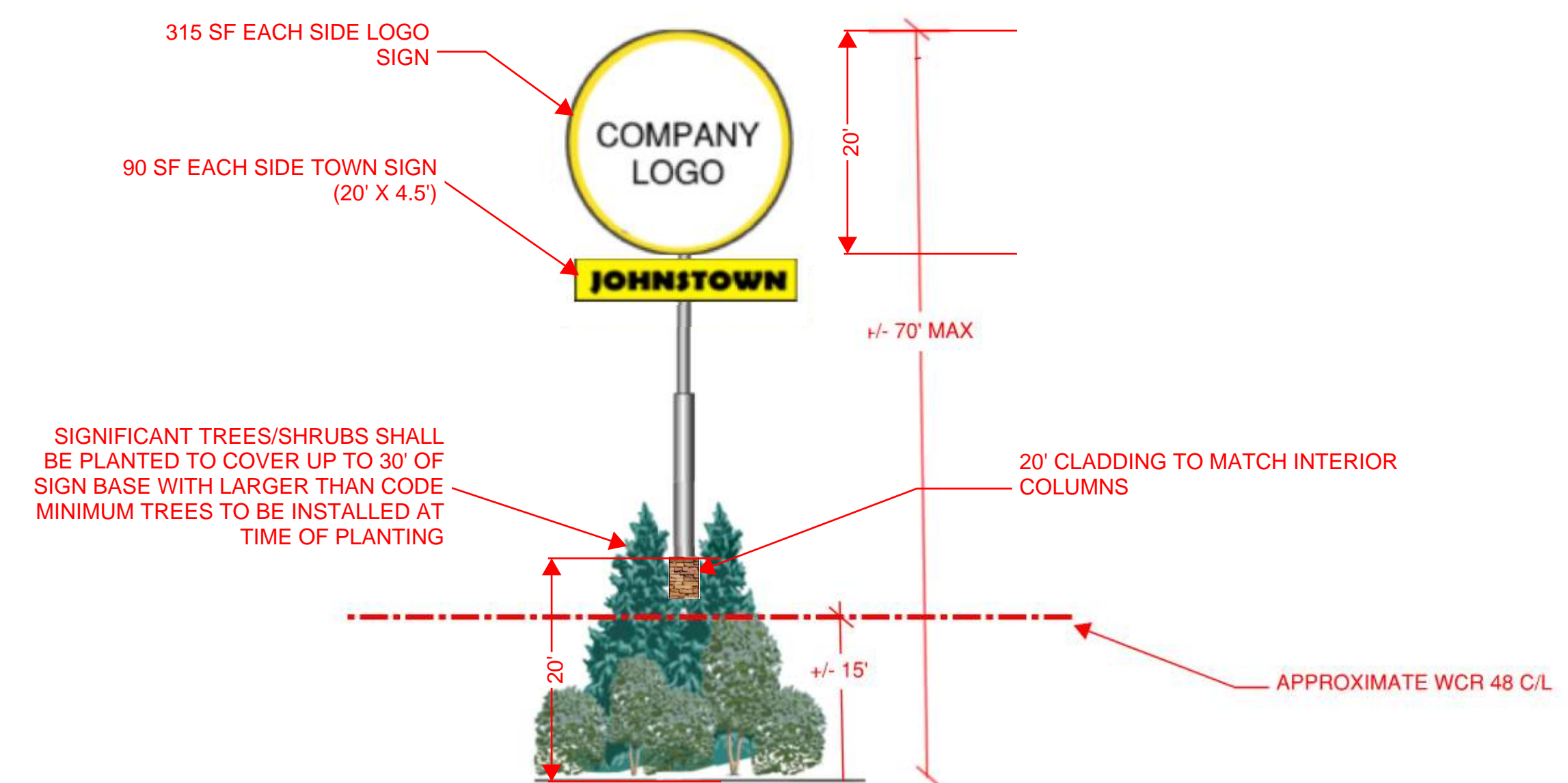
STREETSCAPE TYPICAL (EXHIBIT A)



CLUSTER HOME CONCEPTUAL PLAN (EXHIBIT B)



MULTI-TENANT HIGHWAY SIGN EXAMPLE (EXHIBIT C)



SINGLE-TENANT FREESTANDING SIGN EXAMPLE (EXHIBIT D)

Note: The proposed signage package for PA-3 shall be submitted as a master sign plan under separate cover

1/20/2020 10:22 AM - P:\PLATTE LAND & WATER\GREAT PLAINS\WELTY\CAD\SUBMITTALS\WELTY ODP\DESIGN GUIDELINES.DWG

#	REVISION DESCRIPTION	DATE	BY
1	APPROVED ODP	JANUARY 21, 2020	

WELTY RIDGE
 JOHNSTOWN, CO
 OUTLINE DEVELOPMENT PLAN
 DESIGN GUIDELINES

DESIGNED BY: JM
 DRAWN BY: KB
 CHECKED BY: JM