

THE GRANARY

PART OF THE SOUTH HALF OF SECTION 7,
T. 4 N., R. 67 W. OF THE 6TH P.M.,
COUNTY OF WELD, STATE OF COLORADO



5265 Ronald Reagan Blvd., Suite 210
Johnstown, CO 80534
970.800.3300
GallowayUS.com

PARCEL CURVE SEGMENT TABLE					
CURVE TAG #	DELTA	LENGTH	RADIUS	CHORD BEARING	CHORD LENGTH
C1	89°32'44"	31.26	20.00	N45°04'26"E	28.17
C2	90°00'00"	31.42	20.00	S45°08'52"E	28.28
C3	90°00'00"	31.42	20.00	N44°51'08"E	28.28
C4	25°24'15"	192.87	435.00	S77°26'45"E	191.30
C5	12°00'12"	107.89	515.00	S70°44'43"E	107.69
C6	84°38'15"	29.54	20.00	S34°25'41"E	26.93
C7	84°38'15"	29.54	20.00	N60°12'33"E	26.93
C8	23°22'20"	210.08	515.00	N80°50'30"E	208.63
C9	90°00'00"	31.42	20.00	S65°50'39"E	28.28
C10	90°35'08"	63.54	20.00	N24°26'55"E	28.43
C11	10°05'48"	433.50	2460.00	N74°17'23"E	432.94
C12	99°36'41"	34.77	20.00	S50°21'23"E	30.55
C13	82°45'46"	28.89	20.00	N40°49'50"E	26.44
C14	4°14'41"	182.24	2460.00	N84°20'03"E	182.20
C15	92°59'34"	32.46	20.00	S47°02'50"E	29.01
C16	89°21'29"	31.19	20.00	N44°07'39"E	28.13
C17	14°19'09"	630.54	2460.00	S83°51'04"E	628.82
C18	90°00'00"	31.42	20.00	S31°30'29"E	28.28
C19	90°00'00"	31.42	20.00	N68°29'31"E	28.28
C20	90°00'00"	31.42	20.00	S31°30'29"E	28.28
C21	90°00'00"	31.42	20.00	N68°29'31"E	28.28
C22	90°00'00"	31.42	20.00	S31°30'29"E	28.28
C23	90°49'49"	31.44	20.00	N68°31'55"E	28.30
C24	14°39'59"	261.10	1020.00	S83°45'40"E	260.38
C25	87°41'12"	30.61	20.00	S47°15'03"E	27.71
C26	86°48'06"	30.30	20.00	N39°59'36"E	27.48
C27	84°51'17"	155.83	1020.00	N70°01'04"E	155.67
C28	90°00'00"	31.42	20.00	S60°21'32"E	28.28
C29	90°00'00"	31.42	20.00	N29°38'28"E	28.28
C30	90°00'00"	31.42	20.00	S60°21'32"E	28.28
C31	90°11'32"	31.48	20.00	N29°44'14"E	28.33
C32	13°42'35"	238.70	1000.00	N81°40'18"E	238.13
C33	91°10'46"	31.83	20.00	S45°41'01"E	28.57
C34	90°00'00"	31.42	20.00	N44°41'22"E	28.28
C35	90°17'48"	31.52	20.00	S45°09'44"E	28.36
C36	89°21'12"	31.31	20.00	S45°01'16"E	28.21
C37	14°52'37"	280.42	1080.00	S82°15'03"W	279.64
C38	89°48'43"	31.36	20.00	N60°16'24"E	28.24
C39	90°00'00"	31.42	20.00	N29°38'28"E	28.28
C40	61°01'23"	98.81	940.00	N77°39'09"E	98.77
C41	95°55'42"	33.49	20.00	S31°22'18"E	29.71
C42	180°00'00"	210.49	67.00	N66°35'33"E	214.00
C43	94°55'29"	33.15	20.00	N44°03'17"E	28.47
C44	12°05'42"	197.95	940.00	S82°27'00"E	197.58
C45	89°54'34"	31.38	20.00	S31°27'46"E	28.26
C46	90°00'00"	31.42	20.00	S58°29'31"W	28.28
C47	90°00'00"	31.42	20.00	N31°30'29"W	28.28
C48	90°00'00"	31.42	20.00	S58°29'31"W	28.28
C49	90°00'00"	31.42	20.00	N31°30'29"W	28.28
C50	90°00'00"	31.42	20.00	S58°29'31"W	28.28
C51	5°59'25"	265.56	2540.00	N79°30'11"W	265.43
C52	88°52'51"	31.03	20.00	N38°15'28"W	28.01
C53	88°52'51"	31.03	20.00	S50°49'23"W	28.01
C54	122°07'07"	553.49	2540.00	S89°01'15"W	552.39
C55	96°40'15"	33.74	20.00	N48°33'11"W	29.88
C56	80°36'59"	28.14	20.00	S39°45'27"W	25.88
C57	10°54'36"	483.65	2540.00	S74°36'38"W	482.92
C58	46°06'01"	350.00	435.00	N87°47'37"W	340.64
C59	25°24'15"	228.34	515.00	N72°26'45"W	226.48
C60	90°26'36"	31.57	20.00	N44°53'54"W	28.39
C61	13°37'11"	46.71	196.50	N63°39'43"E	46.60
C62	117°42'11"	180.07	88.00	N45°08'52"W	150.26
C63	13°37'11"	46.71	196.50	S83°02'33"W	46.60
C64	33°04'55"	179.30	305.00	S73°07'40"W	178.73
C65	73°24'01"	370.33	305.00	S19°28'12"W	364.55
C66	25°07'44"	118.38	270.00	S44°01'11"E	117.43
C67	14°40'01"	81.02	330.00	S51°57'25"W	80.82
C68	82°39'07"	28.85	20.00	S35°08'58"W	26.41
C69	86°17'40"	30.12	20.00	S60°22'38"E	27.36
C70	73°24'01"	313.86	245.00	S19°28'12"W	292.84
C71	82°15'44"	28.73	20.00	N82°40'51"W	26.32
C72	97°42'06"	34.10	20.00	S71°09'09"W	30.12
C73	33°04'56"	144.03	245.00	N73°00'40"E	141.96
C74	90°00'00"	31.42	20.00	N45°08'52"W	28.28
C75	90°00'00"	31.42	20.00	N44°51'08"E	28.28
C76	48°36'58"	207.89	245.00	N65°50'23"W	201.71
C77	48°36'58"	207.89	245.00	S65°50'23"W	201.71
C78	90°00'00"	31.42	20.00	N45°08'52"W	28.28
C79	90°00'00"	31.42	20.00	N44°51'08"E	28.28
C80	13°22'36"	71.21	305.00	N83°09'50"E	71.05

PARCEL CURVE SEGMENT TABLE					
CURVE TAG #	DELTA	LENGTH	RADIUS	CHORD BEARING	CHORD LENGTH
C81	13°22'36"	57.20	245.00	S83°09'50"W	57.07
C82	90°00'00"	31.42	20.00	N45°08'52"W	28.28
C83	92°27'51"	40.35	25.00	N46°31'42"E	36.11
C84	86°41'16"	30.26	20.00	S43°53'41"E	27.48
C85	96°46'33"	33.78	20.00	S47°50'14"W	29.91
C86	28°09'47"	356.36	725.00	S82°08'37"W	352.79
C87	24°15'57"	62.51	145.00	S80°24'42"W	62.02
C88	13°37'11"	46.71	196.50	N80°25'44"W	46.60
C89	119°19'39"	183.27	88.00	S46°43'02"W	151.90
C90	13°37'11"	46.71	196.50	S63°01'31"E	46.60
C91	57°08'15"	204.43	205.00	S27°53'45"E	196.07
C92	52°37'51"	188.31	205.00	S82°46'48"E	181.76
C93	25°19'14"	749.07	1695.00	N83°33'53"E	742.99
C94	83°51'27"	29.05	20.00	S42°09'46"E	26.56
C95	96°46'33"	33.78	20.00	S47°50'14"W	29.91
C96	20°10'29"	617.96	1755.00	S86°08'16"W	614.77
C97	88°42'05"	15.48	10.00	N59°35'56"E	13.98
C98	88°42'05"	15.48	10.00	S29°09'09"W	13.98
C99	23°25'55"	78.07	1755.00	S72°10'44"W	78.06
C100	52°37'51"	133.19	145.00	S42°09'46"W	128.56
C101	57°08'15"	144.60	145.00	N27°53'45"E	138.68
C102	92°05'18"	16.07	10.00	N46°43'02"E	14.40
C103	87°28'42"	15.34	10.00	N43°16'58"E	13.88
C104	92°05'18"	16.07	10.00	N46°43'02"E	14.40
C105	22°26'31"	80.30	205.00	N81°32'25"E	79.78
C106	94°25'36"	16.48	10.00	S82°23'52"E	14.68
C107	83°18'37"	14.54	10.00	N62°24'25"E	13.29
C108	28°09'47"	326.87	665.00	N82°08'37"E	323.59
C109	83°13'27"	29.05	20.00	S42°09'46"E	26.56
C110	96°46'33"	33.78	20.00	S47°50'14"W	29.91
C111	28°09'47"	218.73	445.00	S82°08'37"E	216.54
C112	96°41'23"	16.88	10.00	N63°35'35"W	14.94
C113	87°42'19"	15.31	10.00	S28°36'16"W	13.86
C114	20°18'15"	150.61	425.00	S82°36'33"W	148.82
C115	19°50'49"	168.73	485.00	N45°09'44"E	167.88
C116	91°52'25"	16.04	10.00	S61°12'36"E	14.38
C117	83°18'37"	14.54	10.00	N62°24'25"E	13.29
C118	28°09'47"	189.24	385.00	N82°08'37"E	187.34
C119	83°13'27"	29.05	20.00	S42°09'46"E	26.56
C120	93°18'44"	32.57	20.00	N46°26'19"E	29.09
C121	83°18'44"	29.26	20.00	N42°27'27"E	26.72
C122	4°05'56"	246.23	3470.00	N66°23'50"W	246.18
C123	13°37'11"	46.71	196.50	S84°45'37"W	46.60
C124	117°41'21"	180.07	88.00	N43°26'17"E	150.26
C125	13°37'11"	46.71	196.50	N82°42'47"E	46.60
C126	94°26'36"	16.48	10.00	N45°08'52"W	14.68
C127	85°41'47"	14.96	10.00	N44°26'04"E	13.61
C128	4°45'45"	40.32	480.00	N35°36'35"E	40.31
C129	446°45'	35.28	420.00	S35°36'35"W	35.27
C130	90°00'00"	15.71	10.00	S43°25'48"E	14.14
C131	90°00'00"	15.71	10.00	S43°25'48"E	14.14
C132	92°27'47"	16.14	10.00	S44°39'42"E	14.44
C133	87°27'24"	15.26	10.00	S45°10'36"E	13.82
C134	90°00'00"	31.42	20.00	S43°25'48"E	28.28
C135	33°52'27"	239.71	3530.00	S86°29'05"E	239.66
C136	96°41'23"	16.88	10.00	N47°18'15"E	29.73
C137	83°13'27"	29.05	20.00	N42°09'46"W	26.56
C138	71°15'41"	310.32	2470.00	N87°22'27"W	310.12
C139	70°16'06"	314.32	2530.00	S87°20'02"E	314.12
C140	96°46'33"	33.78	20.00	N47°50'14"E	29.91
C141	83°13'27"	29.05	20.00	N42°09'46"W	26.56
C142	96°46'33"	33.78	20.00	N47°50'14"E	29.91
C143	4°39'19"	166.96	2055.00	S86°06'09"E	166.92
C144	4°39'19"	162.09	1995.00	N86°06'09"W	162.05
C145	63°17'31"	285.44	2440.00	S83°50'58"W	285.28
C146	0°45'33"	33.77	2530.00	S80°55'16"W	33.77
C147	81°08'04"	14.16	10.00	S40°43'40"W	13.01
C148	24°23'45"	87.52	205.00	S12°23'00"E	86.86
C149	24°15'02"	261.73	62.00	N34°28'02"W	106.36
C150	86°17'02"	57.12	38.00	N43°24'18"E	51.89
C151	97°01'36"	16.93	10.00	N48°21'40"W	14.98
C152	53°05'59"	243.59	2530.00	S85°30'02"W	243.49
C153	87°04'19"	30.39	20.00	S45°06'22"W	27.55
C154	88°48'48"	31.00	20.00	S42°50'12"E	29.89
C155	91°11'12"	31.83	20.00	N47°09'46"E	28.58
C156	92°55'41"	32.44	20.00	N44°53'38"W	29.00
C157	34°51'12"	424.39	695.00	N73°51'53"W	417.83
C158	90°00'00"	15.71	10.00	S78°37'43"W	14.14
C159	68°53'59"	45.70	38.00	S04°19'17"E	42.99
C160	246°53'59"	269.34	62.00	N89°10'43"E	102.25

PARCEL CURVE SEGMENT TABLE					
CURVE TAG #	DELTA	LENGTH	RADIUS	CHORD BEARING	CHORD LENGTH
C161	19°53'13"	128.42	370.00	N23°41'07"E	127.78
C162	93°46'49"	55.37	330.00	N18°32'55"E	55.31
C163	38°42'51"	97.98	145.00	N35°59'54"E	96.12
C164	38°42'51"	138.52	205.00	N35°59'54"E	135.90
C165	93°46'49"	45.30	270.00	N18°32'55"E	45.25
C166	115°48'55"	118.69	430.00	N21°38'58"E	118.32
C167	85°55'42"	15.00	10.00	N13°24'26"W	13.63
C168	34°59'12"	387.75	635.00	N73°51'53"W	381.76
C169	87°04'19"	15.20	10.00	S45°06'22"W	13.78
C170	11°55'19"	255.94	1230.00	S73°51'51"W	255.47
C171</					

THE GRANARY

PART OF THE SOUTH HALF OF SECTION 7,
T. 4 N., R. 67 W. OF THE 6TH P.M.,
COUNTY OF WELD, STATE OF COLORADO



5265 Ronald Reagan Blvd., Suite 210
Johnstown, CO 80534
970.800.3300
GallowayUS.com

PARCEL CURVE SEGMENT TABLE					
CURVE TAG #	DELTA	LENGTH	RADIUS	CHORD BEARING	CHORD LENGTH
C561	3°47'30"	45.00	680.00	S62°03'34"W	44.99
C562	3°47'29"	45.00	680.00	S10°08'03"W	44.99
C563	1°27'43"	17.35	680.00	S12°46'40"W	17.35
C564	5°52'52"	63.64	620.00	S10°33'05"E	63.61
C565	6°02'27"	65.37	620.00	N4°35'25"E	65.34
C566	4°28'07"	197.32	2530.00	S82°46'23"W	197.27
C567	2°17'31"	101.20	2530.00	S86°09'11"W	101.20
C568	4°29'59"	48.69	620.00	S18°35'40"E	48.68
C569	6°10'44"	66.86	620.00	S13°15'18"E	66.83
C570	6°03'25"	65.54	620.00	S7°08'14"E	65.51
C571	5°45'02"	36.41	38.00	S23°20'30"W	35.03
C572	13°59'51"	9.28	38.00	S57°47'30"W	9.26
C573	6°21'54"	67.34	62.00	S33°40'41"W	67.34
C574	5°58'27"	59.67	62.00	S25°00'19"E	57.39
C575	41°35'08"	45.00	62.00	S73°22'07"E	44.02
C576	41°35'08"	45.00	62.00	N65°02'45"E	44.02
C577	46°15'18"	50.02	62.00	N21°08'32"E	48.67
C578	2°08'24"	2.32	62.00	N32°19'W	2.32
C579	01°47'47"	3.52	680.00	N45°24'W	3.52
C580	4°38'03"	55.00	680.00	N6°43'20"W	54.99
C581	3°47'30"	45.00	680.00	N10°56'06"W	44.99
C582	4°38'03"	55.00	680.00	N15°08'53"W	54.99
C583	3°22'45"	40.11	680.00	N19°09'17"W	40.10
C584	3°29'56"	12.00	196.50	S11°15'56"W	12.00
C585	10°07'14"	34.71	196.50	S87°00'30"W	34.66
C586	7°05'41"	10.90	88.00	S93°11'17"W	10.89
C587	31°21'04"	48.15	88.00	S9°42'05"E	47.55
C588	32°00'11"	49.16	88.00	S41°22'46"E	48.52
C589	21°16'09"	32.67	88.00	S68°00'59"E	32.48
C590	25°31'10"	39.20	88.00	N88°35'22"E	38.87
C591	5°53'04"	20.18	196.50	N78°46'19"E	20.17
C592	7°44'06"	26.53	196.50	N85°34'54"E	26.51
C593	1°27'56"	50.90	1990.00	S89°49'05"E	50.90
C594	1°35'01"	55.00	1990.00	S88°17'37"E	55.00
C595	1°35'01"	55.00	1990.00	S86°42'36"E	55.00
C596	1°35'01"	55.00	1990.00	S85°07'35"E	55.00
C597	1°35'01"	55.00	1990.00	S83°32'34"E	55.00
C598	1°35'04"	55.03	1990.00	S81°57'32"E	55.03
C599	1°19'03"	45.76	1990.00	S80°30'29"E	45.76
C600	0°06'22"	2.98	1610.00	S79°54'08"E	2.98
C601	1°57'28"	55.00	1610.00	S80°56'02"E	55.00
C602	1°57'28"	55.00	1610.00	S82°53'29"E	55.00
C603	1°57'28"	55.00	1610.00	S84°50'55"E	55.00
C604	1°39'12"	46.46	1610.00	S86°39'14"E	46.46
C605	0°29'21"	51.49	6030.00	S87°43'31"E	51.49
C606	0°31'21"	55.00	6030.00	S88°15'53"E	55.00
C607	0°31'21"	55.00	6030.00	S88°45'14"E	55.00
C608	0°31'21"	55.00	6030.00	S89°16'35"E	55.00
C609	0°31'21"	55.00	6030.00	S89°47'57"E	55.00
C610	0°31'21"	55.00	6030.00	S89°40'42"E	55.00
C611	0°31'21"	55.00	6030.00	S89°09'21"E	55.00
C612	0°31'21"	55.00	6030.00	S88°37'59"E	55.00
C613	0°31'21"	55.00	6030.00	S88°06'38"E	55.00
C614	0°31'21"	55.00	6030.00	S87°35'17"E	55.00
C615	0°14'15"	25.00	6030.00	S87°12'28"E	25.00
C616	0°31'21"	55.00	6030.00	S86°49'40"E	55.00
C617	0°31'21"	55.00	6030.00	S86°18'19"E	55.00
C618	0°12'36"	22.11	6030.00	S85°56'20"E	22.11
C619	11°11'19"	38.37	196.50	S85°34'19"E	38.31
C620	2°25'51"	8.34	196.50	S81°45'43"E	8.34
C621	30°22'55"	46.66	88.00	N8°45'45"E	46.12
C622	35°48'36"	55.00	88.00	N51°10'00"E	54.11
C623	35°48'35"	55.00	88.00	N15°21'24"E	54.11
C624	11°02'02"	16.95	88.00	N8°03'55"W	16.92
C625	3°46'26"	12.94	196.50	N11°41'43"W	12.94
C626	9°50'45"	33.77	196.50	N4°53'08"W	33.73
C627	2°51'01"	38.80	780.00	N4°28'11"E	38.80
C628	3°21'19"	45.68	780.00	N1°22'01"E	45.67
C629	3°21'19"	42.23	720.00	N1°22'11"E	42.23
C630	2°50'40"	35.74	720.00	N4°28'21"E	35.74
C631	0°00'07"	0.20	5970.54	S85°50'02"W	0.20
C632	0°26'13"	45.53	5970.00	N86°13'15"E	45.53
C633	0°26'22"	45.78	5970.00	N86°29'33"E	45.78
C634	0°26'24"	45.84	5970.00	N86°50'56"E	45.84
C635	0°19'02"	33.06	5970.00	N87°18'39"E	33.06
C636	0°57'24"	99.68	5970.00	N87°56'52"E	99.68
C637	0°25'55"	45.00	5970.00	S89°24'42"W	45.00
C638	0°25'55"	45.00	5970.00	S89°50'37"W	45.00
C639	0°25'55"	45.00	5970.00	N89°43'28"W	45.00
C640	0°25'55"	45.00	5970.00	N89°17'54"W	45.00

PARCEL CURVE SEGMENT TABLE					
CURVE TAG #	DELTA	LENGTH	RADIUS	CHORD BEARING	CHORD LENGTH
C641	0°25'55"	45.00	5970.00	N88°51'39"W	45.00
C642	0°25'55"	45.00	5970.00	N88°25'44"W	45.00
C643	0°31'40"	55.00	5970.00	N87°56'57"W	55.00
C644	0°12'16"	21.30	5970.00	N87°34'58"W	21.30
C645	1°38'14"	44.29	1550.00	N86°39'43"W	44.29
C646	1°47'26"	48.44	1550.00	N84°36'53"W	48.44
C647	2°11'18"	59.20	1550.00	N82°57'31"W	59.20
C648	2°00'55"	54.52	1550.00	N80°51'25"W	54.52
C649	0°39'28"	23.53	2050.00	S80°10'41"E	23.53
C650	1°20'36"	48.06	2050.00	S81°10'43"E	48.06
C651	1°15'28"	45.00	2050.00	S82°28'45"E	45.00
C652	1°15'28"	45.00	2050.00	S83°44'12"E	45.00
C653	1°15'28"	45.00	2050.00	S84°59'40"E	45.00
C654	1°15'28"	45.00	2050.00	S86°15'08"E	45.00
C655	1°15'28"	45.00	2050.00	S87°30'36"E	45.00
C656	1°15'28"	45.00	2050.00	S88°46'03"E	45.00
C657	1°09'16"	41.30	2050.00	S89°58'25"E	41.30
C658	0°42'26"	28.02	2270.00	S89°48'10"W	28.02
C659	1°11'37"	47.29	2270.00	N89°14'48"W	47.29
C660	1°11'37"	47.29	2270.00	N88°03'11"W	47.29
C661	1°11'37"	47.29	2270.00	N86°51'34"W	47.29
C662	1°11'37"	47.29	2270.00	N85°39'56"W	47.29
C663	1°11'37"	47.29	2270.00	N84°28'19"W	47.29
C664	1°11'37"	47.29	2270.00	N83°16'42"W	47.29
C665	1°38'08"	64.80	2270.00	N81°51'49"W	64.80
C666	1°11'38"	47.30	2269.92	N80°26'56"W	47.30
C667	0°00'10"	0.11	2270.92	N79°50'57"W	0.11
C668	0°15'46"	6.18	1330.00	S79°58'56"E	6.18
C669	1°56'19"	45.00	1330.00	S81°05'04"E	45.00
C670	1°56'19"	45.00	1330.00	S83°10'23"E	45.00
C671	1°56'19"	45.00	1330.00	S84°57'42"E	45.00
C672	1°32'59"	35.97	1330.00	S86°42'21"E	35.97
C673	0°01'16"	2.12	5750.00	S87°29'27"E	2.12
C674	0°32'53"	55.00	5750.00	S87°46'33"E	55.00
C675	0°32'53"	55.00	5750.00	S88°19'26"E	55.00
C676	0°26'54"	45.00	5750.00	S88°49'19"E	45.00
C677	0°26'54"	45.00	5750.00	S89°16'14"E	45.00
C678	0°26'54"	45.00	5750.00	S89°43'08"E	45.00
C679	0°26'54"	45.00	5750.00	S89°49'58"E	45.00
C680	0°28'59"	48.46	5750.00	S89°22'01"E	48.46
C681	1°00'12"	100.68	5750.00	S87°49'39"W	100.68
C682	0°13'31"	22.62	5750.00	S87°12'47"W	22.62
C683	0°26'54"	45.00	5750.00	S86°52'35"W	45.00
C684	0°26'54"	45.00	5750.00	S86°25'40"W	45.00
C685	0°22'12"	37.12	5750.00	S86°01'08"W	37.12
C686	0°34'02"	56.33	5690.00	S89°22'47"W	56.33
C687	0°27'45"	45.93	5690.00	S89°53'41"W	45.93
C688	0°27'45"	45.93	5690.00	N89°38'34"W	45.93
C689	0°27'45"	45.93	5690.00	N89°10'50"W	45.93
C690	0°27'45"	45.93	5690.00	N88°43'05"W	45.93
C691	0°27'45"	45.93	5690.00	N88°15'20"W	45.93
C692	0°27'45"	45.93	5690.00	N87°47'35"W	45.93
C693	0°04'52"	8.05	5690.00	N87°31'16"W	8.05
C694	1°43'44"	38.32	1270.00	N86°36'59"W	38.32
C695	2°13'22"	49.27	1270.00	N84°38'28"W	49.26
C696	2°13'22"	49.27	1270.00	N82°25'04"W	49.26
C697	1°27'26"	32.30	1270.00	N80°34'40"W	32.30
C698	0°43'55"	29.77	2330.00	N80°12'55"W	29.77
C699	1°06'24"	45.00	2330.00	N81°08'04"W	45.00
C700	1°19'19"	53.76	2330.00	N82°20'56"W	53.76
C701	1°06'24"	45.00	2330.00	N83°33'47"W	45.00
C702	1°06'24"	45.00	2330.00	N84°40'11"W	45.00
C703	1°06'24"	45.00	2330.00	N85°46'34"W	45.00
C704	1°06'24"	45.00	2330.00	N86°52'56"W	45.00
C705	1°06'24"	45.00	2330.00	N87°59'22"W	45.00
C706	1°06'24"	45.00	2330.00	N89°05'45"W	45.00
C707	0°54'06"	36.66	2330.00	S89°54'00"W	36.66
C708	0°30'25"	22.56	2550.00	S89°44'47"E	22.56
C709	1°03'23"	47.02	2550.00	S88°57'53"E	47.02
C710	1°03'23"	47.02	2550.00	S87°54'30"E	47.02
C711	1°03'23"	47.02	2550.00	S86°51'07"E	47.02
C712	1°03'23"	47.02	2550.00	S85°47'43"E	47.02
C713	1°03'24"	47.02	2550.00	S84°44'20"E	47.02
C714	1°03'37"	47.19	2550.00	S83°40'50"E	47.19
C715	1°03'41"	47.24	2550.00	S82°37'10"E	47.24
C716	1°03'24"	47.03	2550.00	S81°33'38"E	47.03
C717	1°03'37"	47.19	2550.00	S80°30'07"E	47.19
C718	0°07'21"	5.46	2550.00	S79°54'38"E	5.46
C719	12°31'16"	42.94	196.50	S73°35'19"E	42.86
C720	1°05'50"	3.77	196.50	S66°46'44"E	3.77

PARCEL CURVE SEGMENT TABLE					
CURVE TAG #	DELTA	LENGTH	RADIUS	CHORD BEARING	CHORD LENGTH
C721	5°50'37"	53.04	520.00	N3°04'21"E	53.01
C722	7°29'51"	68.05	520.00	N9°44'36"E	68.00
C723	3°48'48"	38.60	580.00	N11°35'07"E	38.60
C724	4°26'43"	45.00	580.00	N17°27'21"E	44.99
C725	4°26'43"	45.00	580.00	N3°00'38"E	44.99
C726	0°38'13"	6.45	580.00	N0°28'10"E	6.45
C727	0°27'27"	3.11	390.00	N0°22'46"E	3.11
C728					

THE GRANARY

Johnstown, Colorado



NOT FOR CONSTRUCTION

REV.	COMMENT	DATE

PRELIMINARY DEVELOPMENT PLAN

Date: 04.08.2021

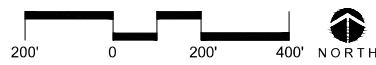
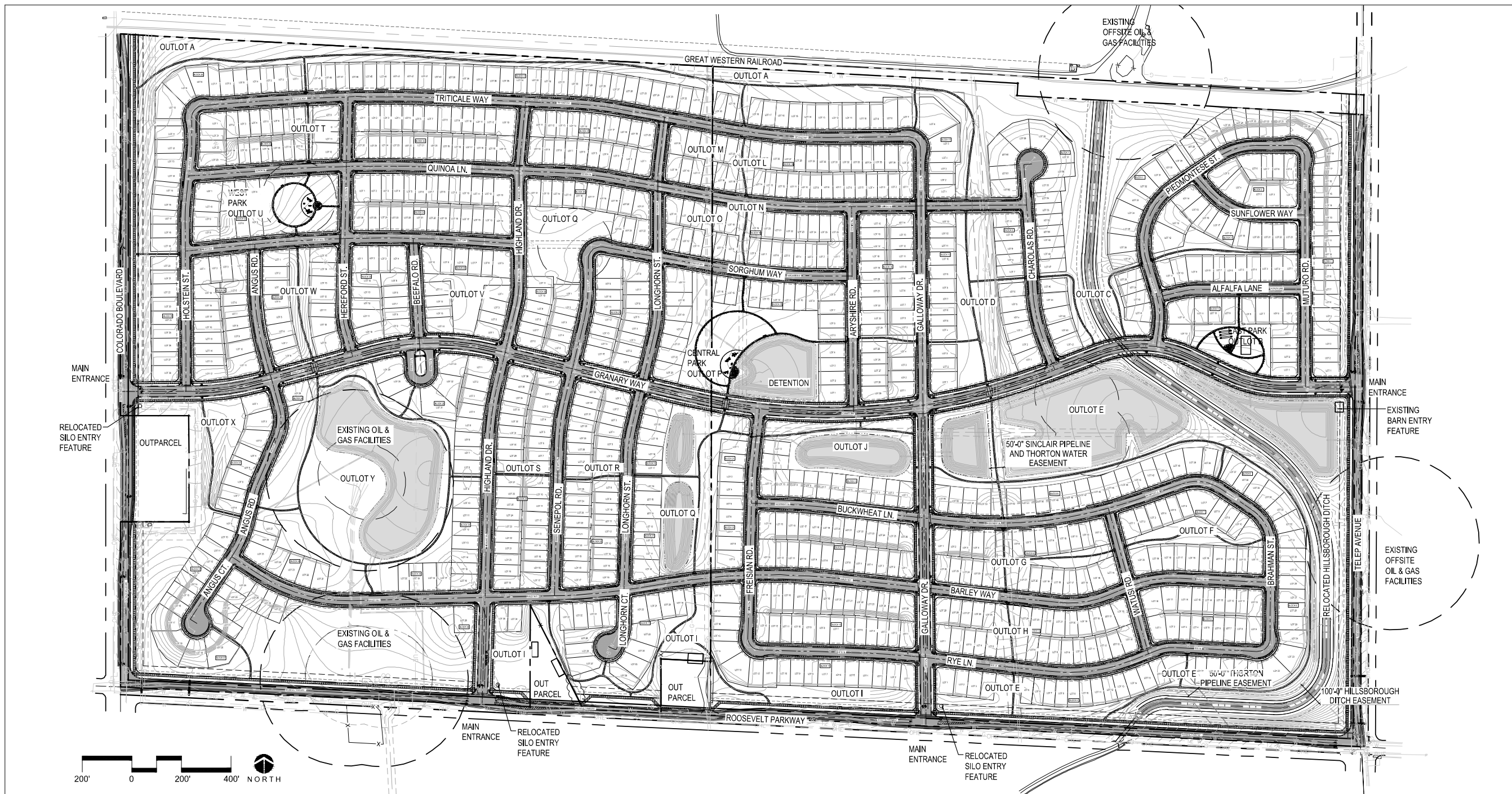
Drawn By: SL & DD

Checked By: CR

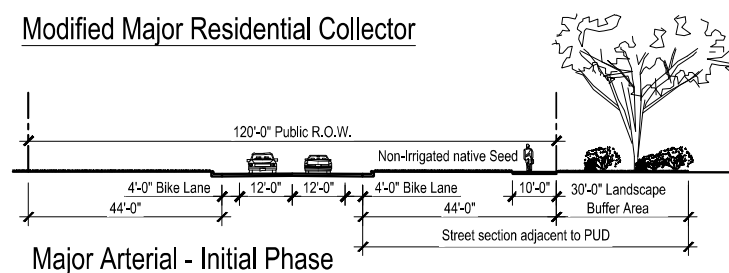
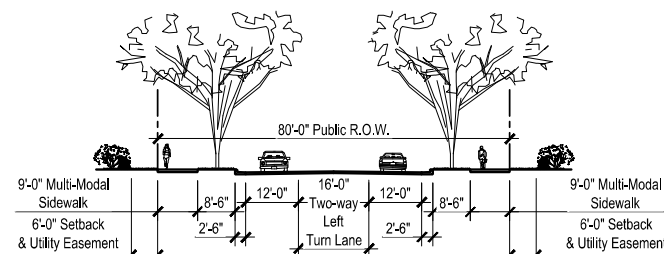
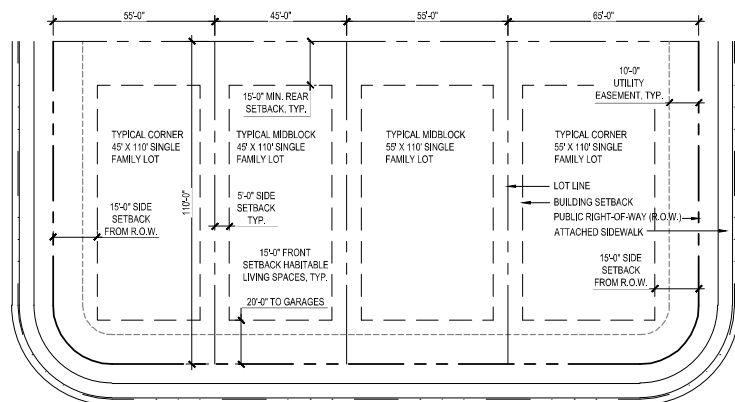
Sheet Name
OVERALL SITE PLAN AND LAND USE CHART

Sheet

LS100



- SITE LEGEND:**
- PROPERTY LINE
 - - - LOT LINE
 - - - EASEMENT
 - - - LANDSCAPE BUFFER
 - - - 150' PLUGGED AND ABANDONED OIL FACILITY SETBACK
 - - - 350' ACTIVE OIL FACILITY SETBACK
 - ▬ ROAD
 - ▬ SIDEWALK
 - ▬ 5' SOFT SURFACE TRAIL SYSTEM
 - ▬ SPEED RAMP: REFER TO CIVIL PLANS FOR MORE INFORMATION AND DETAILS



- Notes:**
- Left and right turn lanes at intersection and accesses as required per Traffic Impact Study.
 - On-street bike lanes.
 - Utilities should be located under the road or sidewalk, where possible.
 - Ultimate Major Arterial Road cross section will be built as determined by Traffic Impact Study and Town of Johnstown.

THE GRANARY
Johnstown, Colorado



NOT FOR
CONSTRUCTION

REV.	COMMENT	DATE

PRELIMINARY
DEVELOPMENT
PLAN

Date: 04.08.2021
Drawn By: SL & DD
Checked By: CR

Sheet Name
SITE PLAN

Sheet
LS101

SITE LEGEND:

- PROPERTY LINE
- LOT LINE
- EASEMENT
- LANDSCAPE BUFFER
- 150' PLUGGED AND ABANDONED OIL FACILITY SETBACK
- 350' ACTIVE OIL FACILITY SETBACK
- ROAD
- SIDEWALK
- 5' SOFT SURFACE TRAIL SYSTEM
- SPEED RAMP: REFER TO CIVIL PLANS FOR MORE INFORMATION AND DETAILS

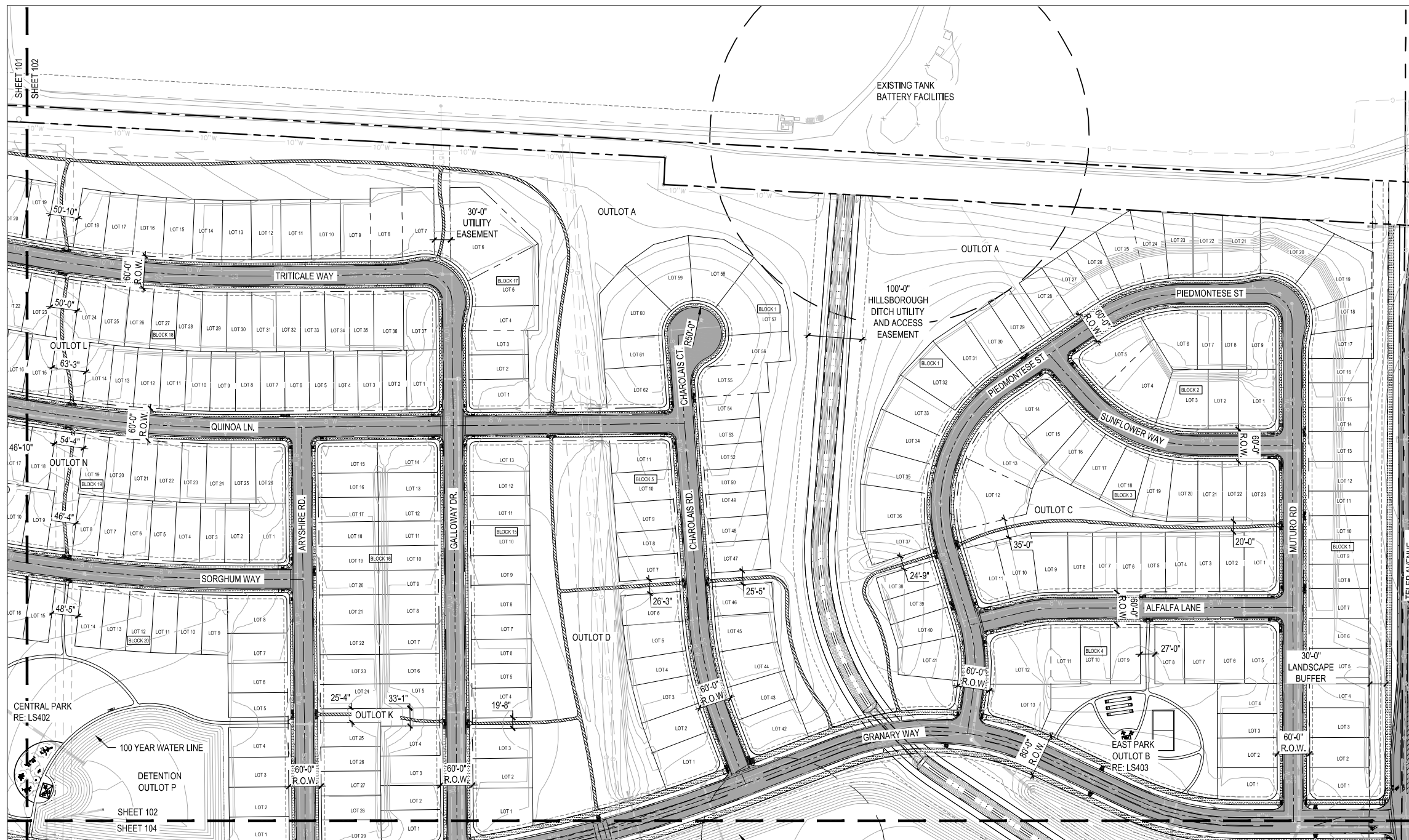


KEY MAP

CENTRAL RE: LS40

100' 0 100' 200' NORTH

SHEET 101
SHEET 103



SITE LEGEND:

	PROPERTY LINE
	LOT LINE
	EASEMENT
	LANDSCAPE BUFFER
	150' PLUGGED AND ABANDONED OIL FACILITY SETBACK
	350' ACTIVE OIL FACILITY SETBACK
	ROAD
	SIDEWALK
	5' SOFT SURFACE TRAIL SYSTEM
	SPEED RAMP: REFER TO CIVIL PLANS FOR MORE INFORMATION AND DETAILS

THE GRANARY
Johnstown, Colorado



NOT FOR CONSTRUCTION

REV.	COMMENT	DATE

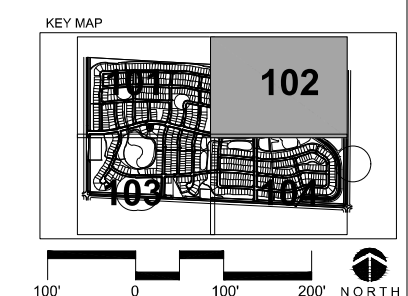
PRELIMINARY DEVELOPMENT PLAN

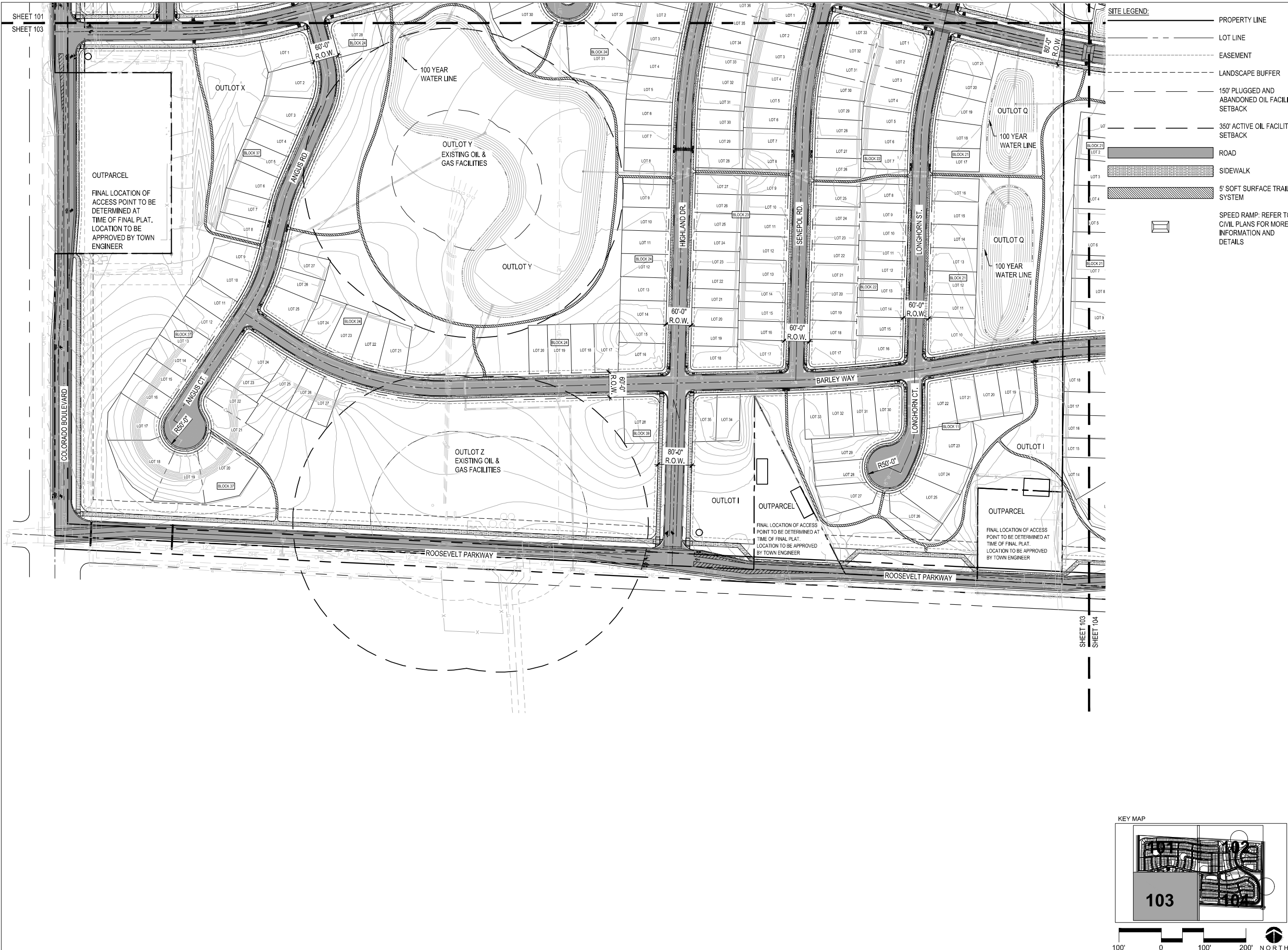
Date: 04.08.2021
 Drawn By: SL & DD
 Checked By: CR
 Sheet Name

SITE PLAN

Sheet

LS102





SITE LEGEND:

	PROPERTY LINE
	LOT LINE
	EASEMENT
	LANDSCAPE BUFFER
	150' PLUGGED AND ABANDONED OIL FACILITY SETBACK
	350' ACTIVE OIL FACILITY SETBACK
	ROAD
	SIDEWALK
	5' SOFT SURFACE TRAIL SYSTEM
	SPEED RAMP: REFER TO CIVIL PLANS FOR MORE INFORMATION AND DETAILS

THE GRANARY
Johnstown, Colorado



NOT FOR CONSTRUCTION

REV.	COMMENT	DATE

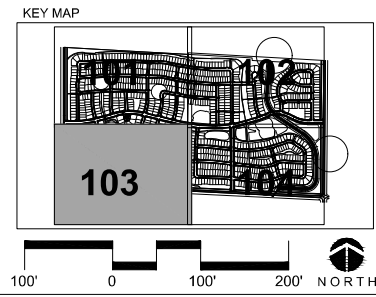
PRELIMINARY DEVELOPMENT PLAN

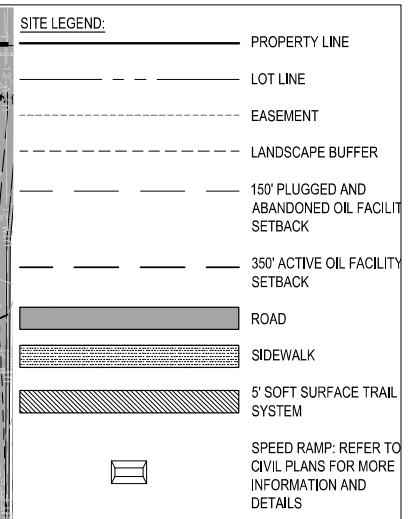
Date: 04.08.2021
 Drawn By: SL & DD
 Checked By: CR
 Sheet Name

SITE PLAN

Sheet

LS103





THE GRANARY
Johnstown, Colorado



NOT FOR CONSTRUCTION

REV.	COMMENT	DATE

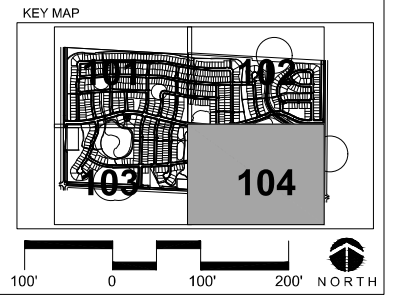
PRELIMINARY DEVELOPMENT PLAN

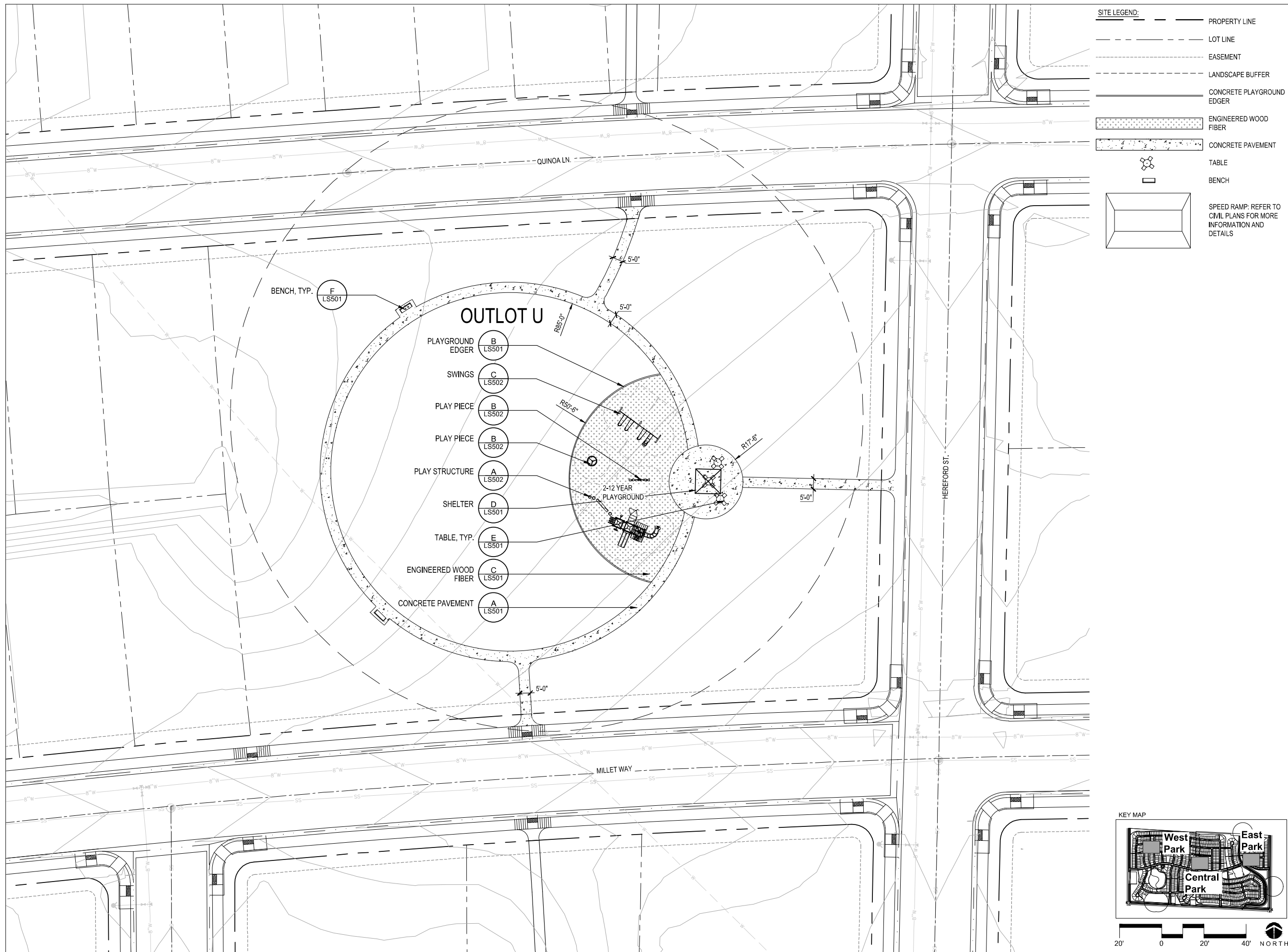
Date: 04.08.2021
 Drawn By: SL & DD
 Checked By: CR
 Sheet Name

SITE PLAN

Sheet

LS104





THE GRANARY
Johnstown, Colorado



NOT FOR CONSTRUCTION

REV.	COMMENT	DATE

PRELIMINARY DEVELOPMENT PLAN

Date: 04.08.2021
 Drawn By: SL & DD
 Checked By: CR

Sheet Name
 SITE ENLARGEMENT PLAN - WEST PARK

Sheet

LS401

THE GRANARY
Johnstown, Colorado



NOT FOR
CONSTRUCTION

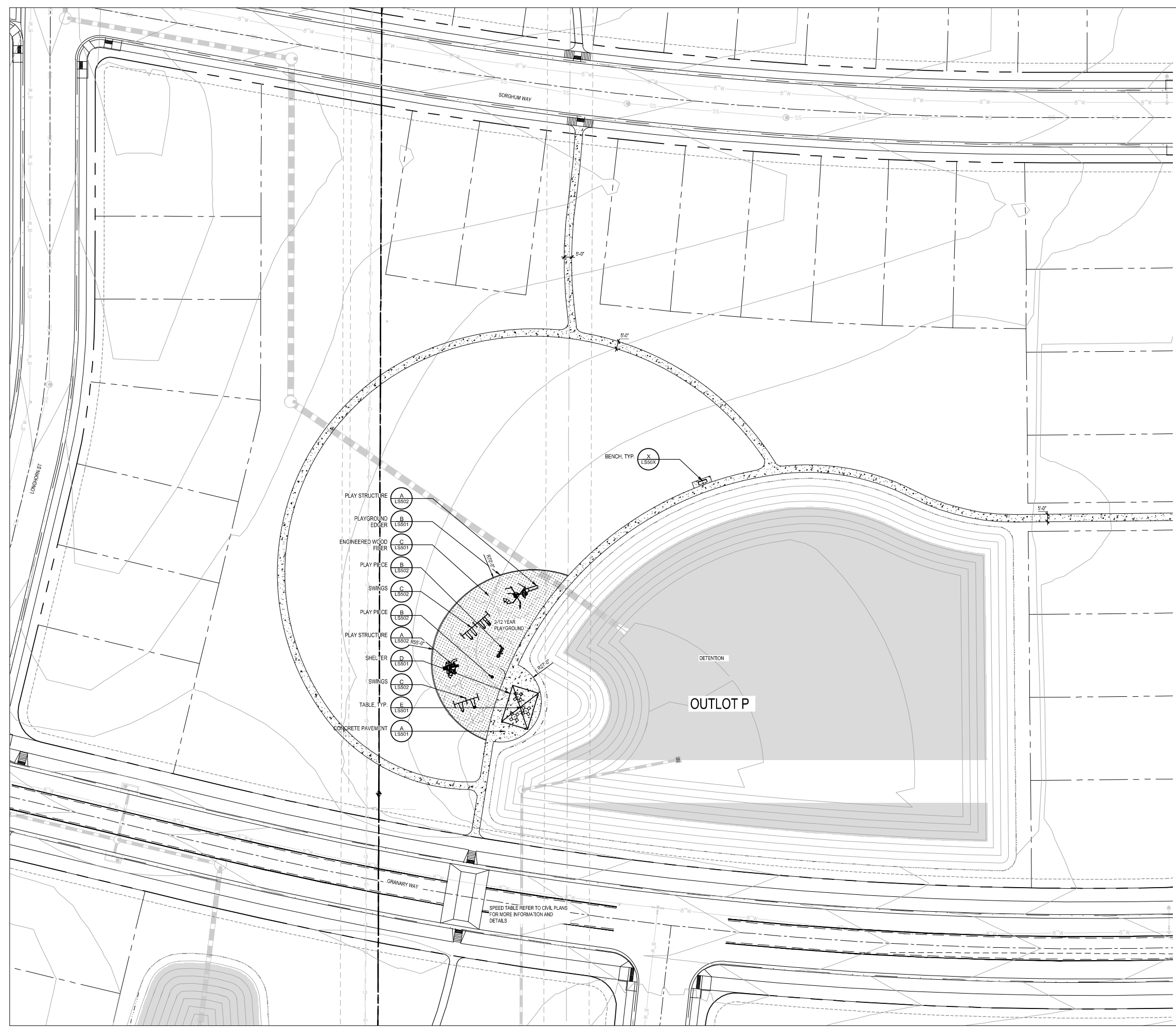
REV.	COMMENT	DATE

PRELIMINARY
DEVELOPMENT
PLAN

Date: 04.08.2021
Drawn By: SL & DD
Checked By: CR

Sheet Name
SITE ENLARGEMENT
PLAN - CENTRAL
PARK
Sheet

LS402



SITE LEGEND:

- PROPERTY LINE
- - - LOT LINE
- - - EASEMENT
- - - LANDSCAPE BUFFER
- CONCRETE PLAYGROUND EDGER
- ▨ ENGINEERED WOOD FIBER
- ▨ CONCRETE PAVEMENT
- ⊗ TABLE
- BENCH
- ▭ SPEED RAMP: REFER TO CIVIL PLANS FOR MORE INFORMATION AND DETAILS

- PLAY STRUCTURE A LS502
- PLAYGROUND EDGER B LS501
- ENGINEERED WOOD FIBER C LS501
- PLAY PIECE B LS502
- SWINGS C LS502
- PLAY PIECE B LS502
- PLAY STRUCTURE A LS502 R55-02
- SHELTER D LS501
- SWINGS C LS502
- TABLE, TYP. E LS501
- CONCRETE PAVEMENT A LS501

SPEED TABLE REFER TO CIVIL PLANS FOR MORE INFORMATION AND DETAILS

KEY MAP

30' 0 30' 60' NORTH

THE GRANARY
Johnstown, Colorado



NOT FOR
CONSTRUCTION

REV.	COMMENT	DATE

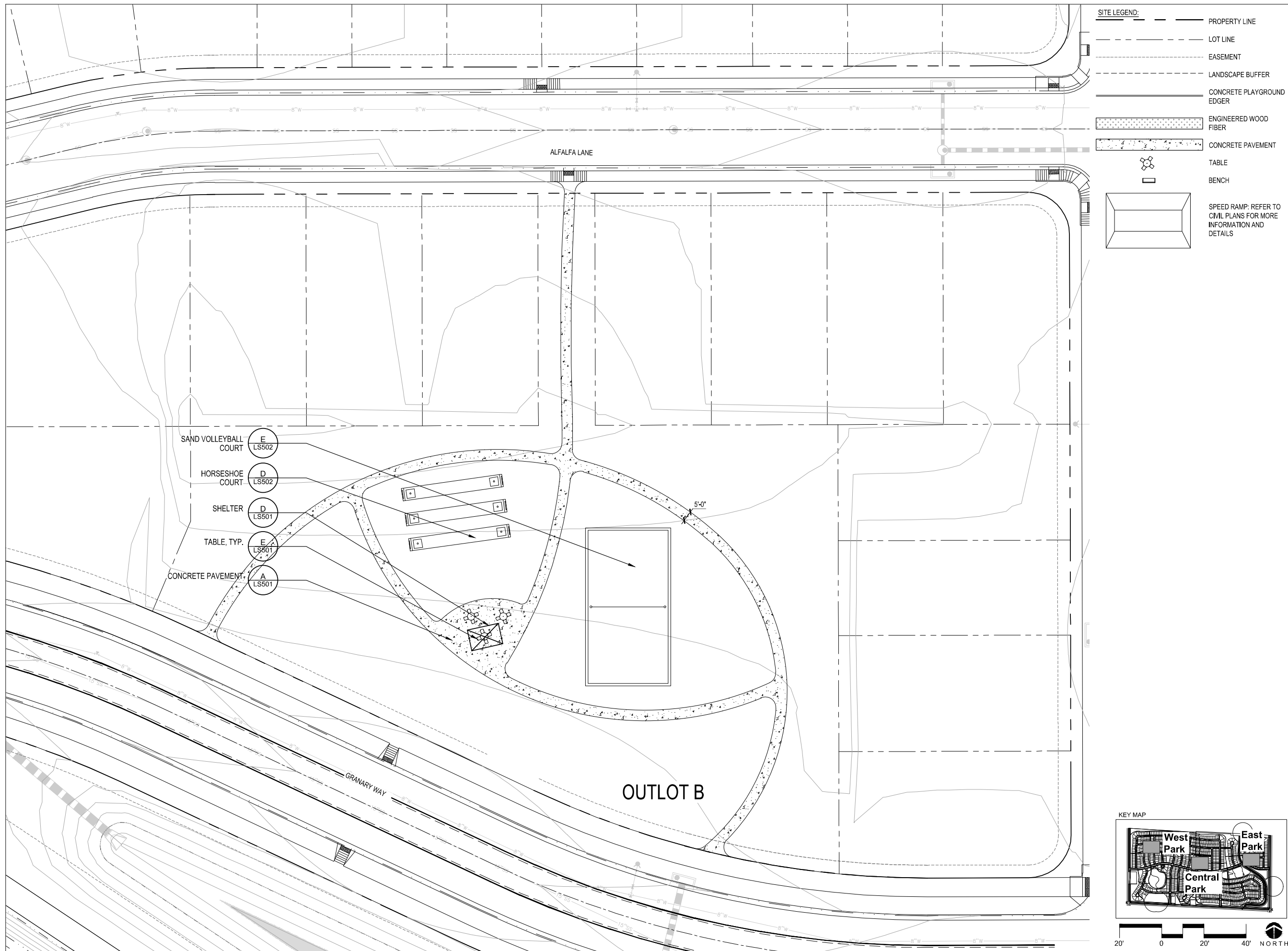
PRELIMINARY
DEVELOPMENT
PLAN

Date: 04.08.2021
Drawn By: SL & DD
Checked By: CR

Sheet Name
SITE ENLARGEMENT
PLAN - EAST PARK

Sheet

LS403





NOT FOR
CONSTRUCTION

REV.	COMMENT	DATE

PRELIMINARY
DEVELOPMENT
PLAN

Date: 04.08.2021
Drawn By: SL & DD
Checked By: CR

Sheet Name
SITE DETAILS

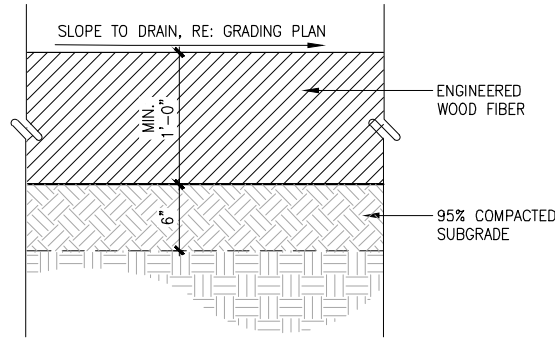
Sheet

LS501

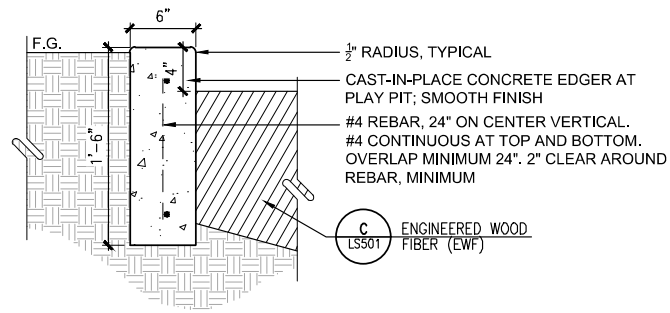


COMPANY: POLIGON
MODEL: MSX: MONOSLOPE (3' OVERHANG)
MOUNT: EMBED
ROOF TYPE: STANDING SEAM
ROOF COLOR: BUCKSKIN
FRAME COLOR: JUNIPER
INSTALL PER MANUFACTURER'S SPECIFICATIONS AND RECOMMENDATIONS

D SHELTER
SCALE: NTS DT-FURN-SHEL

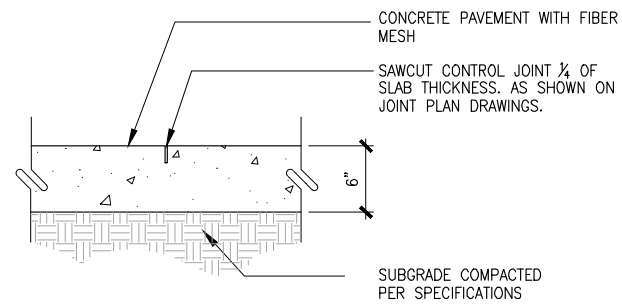


C ENGINEERED WOOD FIBER
SCALE: 1 1/2" = 1'-0" DT-PVMT-ENG-WOOD-FIBER



NOTES:
JOINT SPACING AT EDGER:
1. SAW CUT CONTROL JOINTS EQUALLY SPACED AT 8' MINIMUM, 10' MAXIMUM AND CONTINUE DOWN ENTIRE FACE OF EDGER
2. EXPANSION JOINTS EQUALLY SPACED AT 80' MINIMUM, 100' MAXIMUM
3. REFER TO SPECIFICATIONS FOR ALL MATERIALS CALLED OUT IN DETAIL

B PLAYGROUND EDGER
SCALE: 1 1/2" = 1'-0" DT-CURB-PLAY



NOTES:
1. EXPANSION JOINTS PLACED PER JOINT PLAN, BUT NO LESS THAN 100' O.C.
2. CONTROL JOINT PLACED PER JOINT PLAN, MAXIMUM SPACING 10'.
3. CONCRETE TO HAVE FINE BROOM FINISH PERPENDICULAR TO CENTERLINE OF PAVING.
4. FINISHED GRADE OF LANDSCAPE AREA TO BE 1" BELOW FINISH GRADE OF CONCRETE (TYPICAL BOTH SIDES).

A CONCRETE PAVEMENT
SCALE: N.T.S. DT-PVMT-COVC



COMPANY: MAGLIN
MODEL: 1100 CLUSTER SEATING, BACKLESS SEATS
MOUNT: SURFACE
MATERIAL: METAL
COLOR: TITANIUM
INSTALL PER MANUFACTURER'S SPECIFICATIONS AND RECOMMENDATIONS

E TABLE
SCALE: NTS DT-FURN-TABL



COMPANY: MAGLIN
MODEL: 970 BACKED
MOUNT: SURFACE
MATERIAL: METAL
COLOR: TITANIUM
INSTALL PER MANUFACTURER'S SPECIFICATIONS AND RECOMMENDATIONS

F BENCH
SCALE: NTS DT-FURN-BNCH



NOTES:
1. BARN TO BE INSPECTED AND MADE STRUCTURALLY SOUND.
2. NO ACCESS INTO THE INTERIOR OF THE BARN SHALL BE PERMITTED.

G TELEP AVENUE ENTRANCE BARN
SCALE: NTS DT-FURN-SIGN-ENTR-4



NOTES:
1. SILOS TO BE INSPECTED AND MADE STRUCTURALLY SOUND.
2. NO ACCESS INTO THE INTERIOR OF THE SILOS SHALL BE PERMITTED.

H SILO ENTRY SIGN
SCALE: NTS DT-FURN-SIGN-ENTR-1-3



NOT FOR
CONSTRUCTION

REV.	COMMENT	DATE

PRELIMINARY
DEVELOPMENT
PLAN

Date: 04.08.2021
Drawn By: SL & DD
Checked By: CR

Sheet Name
SITE DETAILS

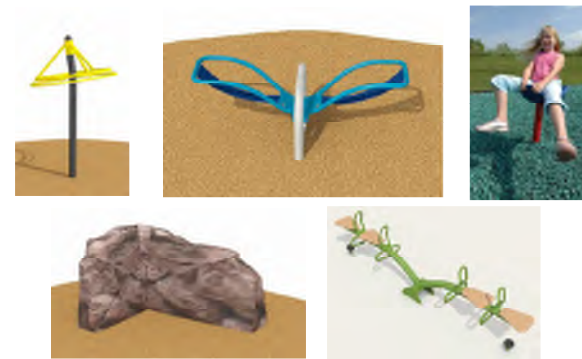
Sheet

LS502



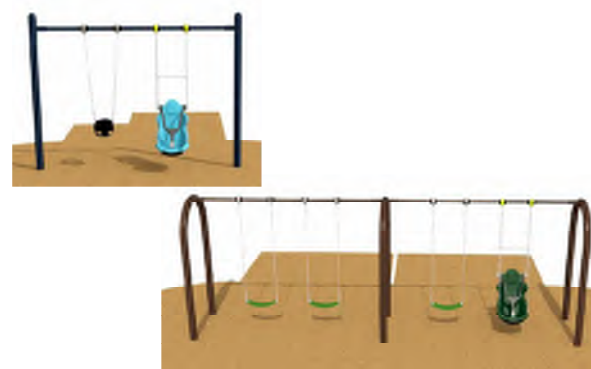
IMAGES ABOVE ARE REPRESENTATION OF TYPE OF PLAY EQUIPMENT.
COMPANY: TO BE DETERMINED
AGE RANGE: EQUIPMENT FOR 2-12 YEAR OLDS WILL BE ACCOMMODATED
COLOR: TO BE DETERMINED
INSTALL PER MANUFACTURER'S SPECIFICATIONS AND RECOMMENDATIONS

A PLAY STRUCTURE
SCALE: NTS DT-FURN-PLAY-STRUC



IMAGES ABOVE ARE REPRESENTATION OF TYPE OF PLAY EQUIPMENT.
COMPANY: TO BE DETERMINED
MODEL: PIECES TO ACCOMMODATE AGES 2-12 YEARS OLD.
COLOR: TO BE DETERMINED
INSTALL PER MANUFACTURER'S SPECIFICATIONS AND RECOMMENDATIONS

B PLAY PIECE
SCALE: NTS DT-FURN-PLAY-SWING



IMAGES ABOVE ARE REPRESENTATION OF TYPE OF PLAY EQUIPMENT.
COMPANY: TO BE DETERMINED
MODEL: SWINGS TO HAVE COMBINATION OF BELTS, ADA BUCKET AND TOT SWING THROUGHOUT PARKS.
COLOR: TO BE DETERMINED
INSTALL PER MANUFACTURER'S SPECIFICATIONS AND RECOMMENDATIONS

C SWINGS
SCALE: NTS DT-FURN-PLAY-SWING



IMAGES ABOVE ARE REPRESENTATION OF HORSESHOE COURT.

D HORSESHOE COURT
SCALE: NTS DT-FURN-HORSE



IMAGES ABOVE ARE REPRESENTATION OF SAND VOLLEYBALL COURT.
MINIMUM SIZE 40'X75'

E SAND VOLLEYBALL COURT
SCALE: NTS DT-FURN-PLAY-VOLY



NOT FOR
CONSTRUCTION

REV.	COMMENT	DATE

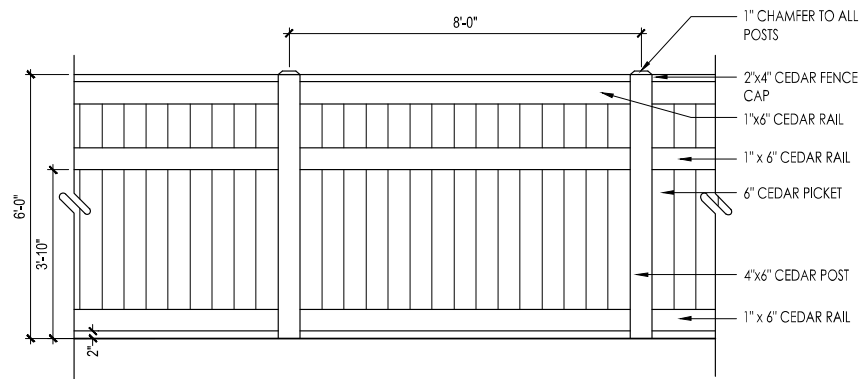
PRELIMINARY
DEVELOPMENT
PLAN

Date: 04.08.2021
Drawn By: SL & DD
Checked By: CR

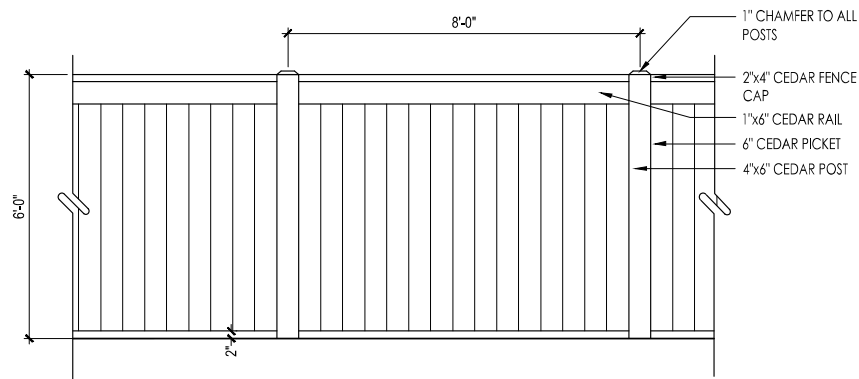
Sheet Name
Fencing Details

Sheet

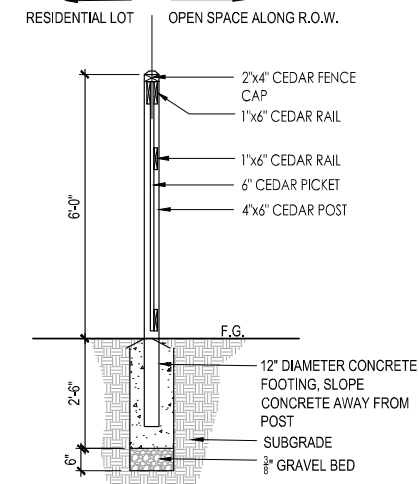
FP501



OUTSIDE ELEVATION (VIEW FROM R.O.W. ALONG COLORADO BOULEVARD, TELEP AVENUE, CR 46 AND RAILROAD)



INSIDE ELEVATION (VIEW FROM RESIDENTIAL LOT)



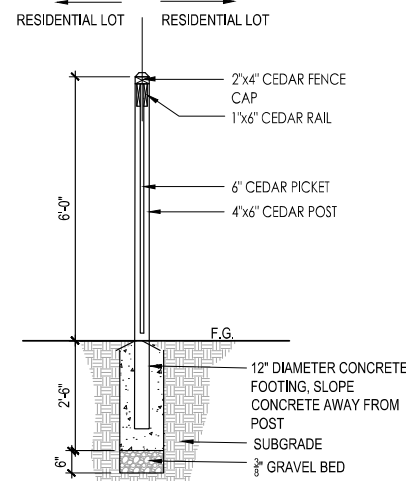
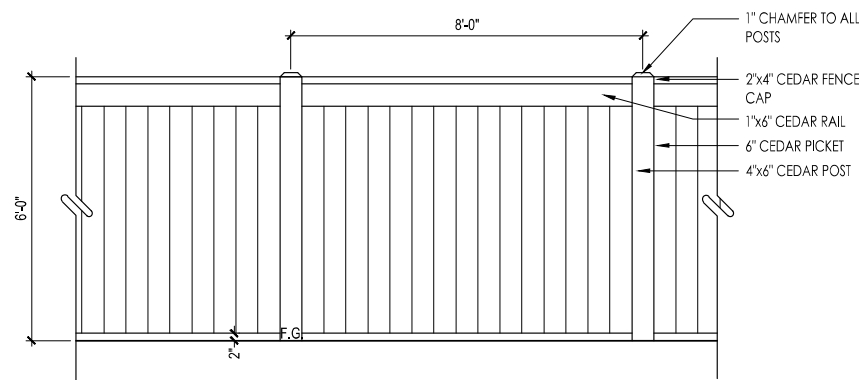
FENCE SECTION

- NOTES:
- FENCE TYPE 1 SHALL BE LOCATED AT ALL SINGLE-FAMILY LOT REAR PROPERTY LINES THAT BACK OPEN SPACE ALONG COLORADO BOULEVARD, TELEP AVENUE, CR 46 AND RAILROAD TO THE NORTH.
 - ALL FENCING MATERIALS SHALL BE CEDAR OR PRESSURE TREATED LUMBER #1 GRADE.
 - DEVELOPER'S STRUCTURAL ENGINEER TO APPROVE ALL COLUMN FOOTINGS.

A FENCE TYPE 1 (ALONG SINGLE-FAMILY REAR LOT PROPERTY LINES ADJACENT TO PUBLIC ARTERIAL R.O.W.)

SCALE: 1/2"=1'-0"

DT-FENC-TYPE 1



FENCE SECTION

- NOTES:
- FENCE TYPE 2 SHALL BE LOCATED AT ALL SINGLE-FAMILY LOT SIDE PROPERTY LINES.
 - ALL FENCING MATERIALS SHALL BE CEDAR OR PRESSURE TREATED LUMBER #1 GRADE.
 - DEVELOPER'S STRUCTURAL ENGINEER TO APPROVE ALL COLUMN FOOTINGS.



- NOTES:
- AMERISTAR IMPASSE II FENCING IN BLACK.
 - FENCE TYPE 2 SHALL BE LOCATED AROUND EXISTING OIL & GAS FACILITIES.
 - FINAL LOCATIONS OF FENCING AROUND ACTIVE OIL & GAS FACILITIES TO BE APPROVED BY OIL & GAS FACILITIES AT TIME OF FINAL PLAT.

B FENCE TYPE 2 (ALONG SINGLE-FAMILY SIDE LOT PROPERTY LINES)

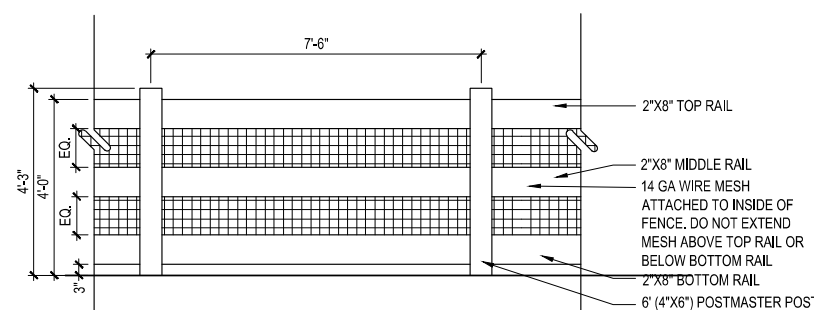
SCALE: 1/2"=1'-0"

DT-FENC-TYPE 2

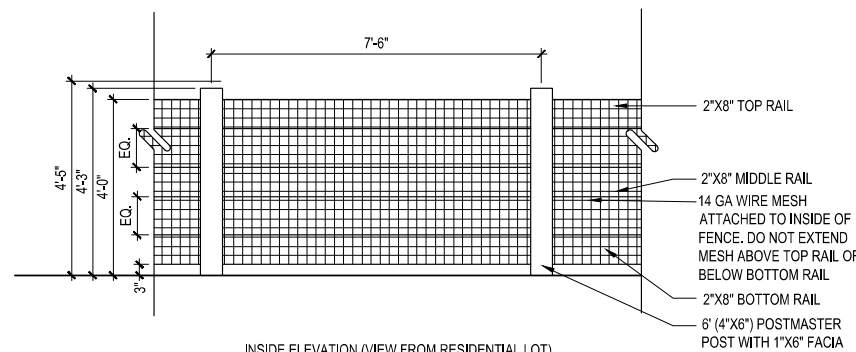
D FENCE TYPE 4 (OIL & GAS FACILITIES)

SCALE: 1/2"=1'-0"

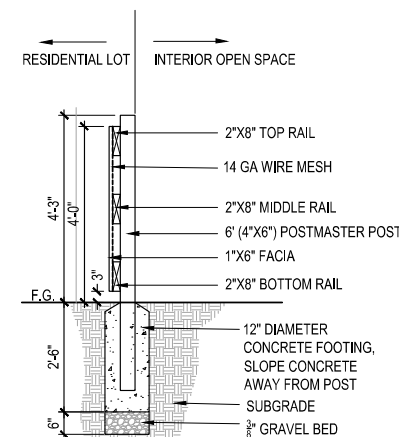
DT-FENC-TYPE 4



OUTSIDE ELEVATION (VIEW FROM OPEN SPACE)



INSIDE ELEVATION (VIEW FROM RESIDENTIAL LOT)



FENCE SECTION

- NOTES:
- FENCE TYPE 3 SHALL BE LOCATED ON ALL SINGLE-FAMILY LOT REAR PROPERTY LINES THAT BACK INTERIOR OPEN SPACE.
 - ALL FENCING MATERIALS SHALL BE CEDAR OR PRESSURE TREATED LUMBER #1 GRADE.
 - DEVELOPER'S STRUCTURAL ENGINEER TO APPROVE ALL COLUMN FOOTINGS.

C FENCE TYPE 3 (ALONG SINGLE-FAMILY LOT LINES THAT ARE ADJACENT TO INTERIOR OPEN SPACE)

SCALE: 1/2"=1'-0"

DT-FENC-TYPE 3

THE GRANARY

Johnstown, Colorado



NOT FOR CONSTRUCTION

REV.	COMMENT	DATE

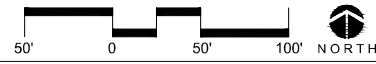
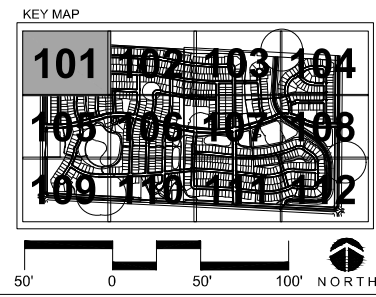
PRELIMINARY DEVELOPMENT PLAN

Date: 04.08.2021
 Drawn By: SL & DD
 Checked By: CR

Sheet Name
 LANDSCAPE PLAN

Sheet
 LP101

- LANDSCAPE LEGEND:
- PROPERTY LINE
 - EASEMENT
 - 150' PLUGGED AND ABANDONED OIL FACILITY SETBACK
 - 350' ACTIVE OIL FACILITY SETBACK
 - LANDSCAPE BUFFER
 - ▨ SHRUB BED W/ WOOD MULCH (4" DEPTH)
 - ▨ RTF FESCUE BLEND
 - ▨ HYBRID BLUEGRASS
 - ▨ DETENTION SEED MIX
 - ▨ UPLAND SEED MIX
 - ▨ 100 YEAR WATER LINE



SHEET 101
 SHEET 105

SHEET 101
 SHEET 102

THE GRANARY
Johnstown, Colorado



NOT FOR
CONSTRUCTION

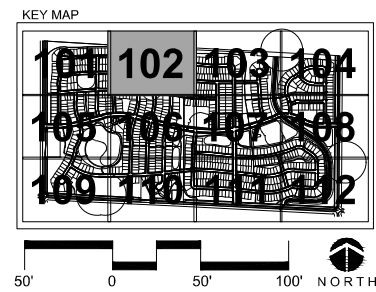
REV.	COMMENT	DATE

PRELIMINARY
DEVELOPMENT
PLAN

Date: 04.08.2021
Drawn By: SL & DD
Checked By: CR

Sheet Name
LANDSCAPE PLAN

Sheet
LP102



THE GRANARY
Johnstown, Colorado



NOT FOR
CONSTRUCTION

REV.	COMMENT	DATE

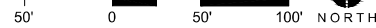
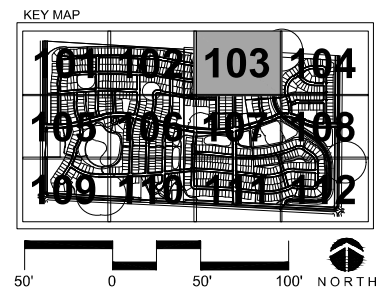
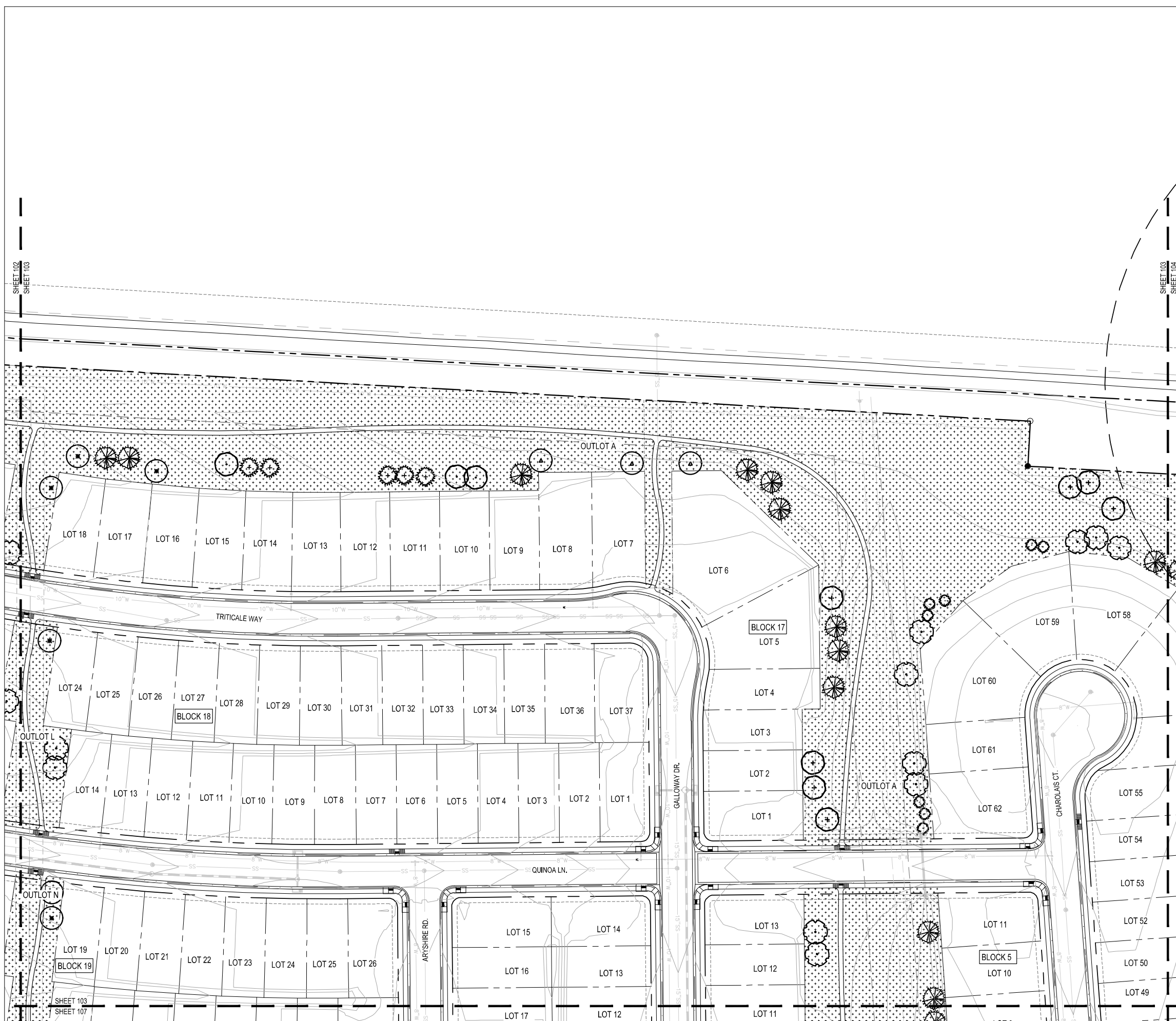
PRELIMINARY
DEVELOPMENT
PLAN

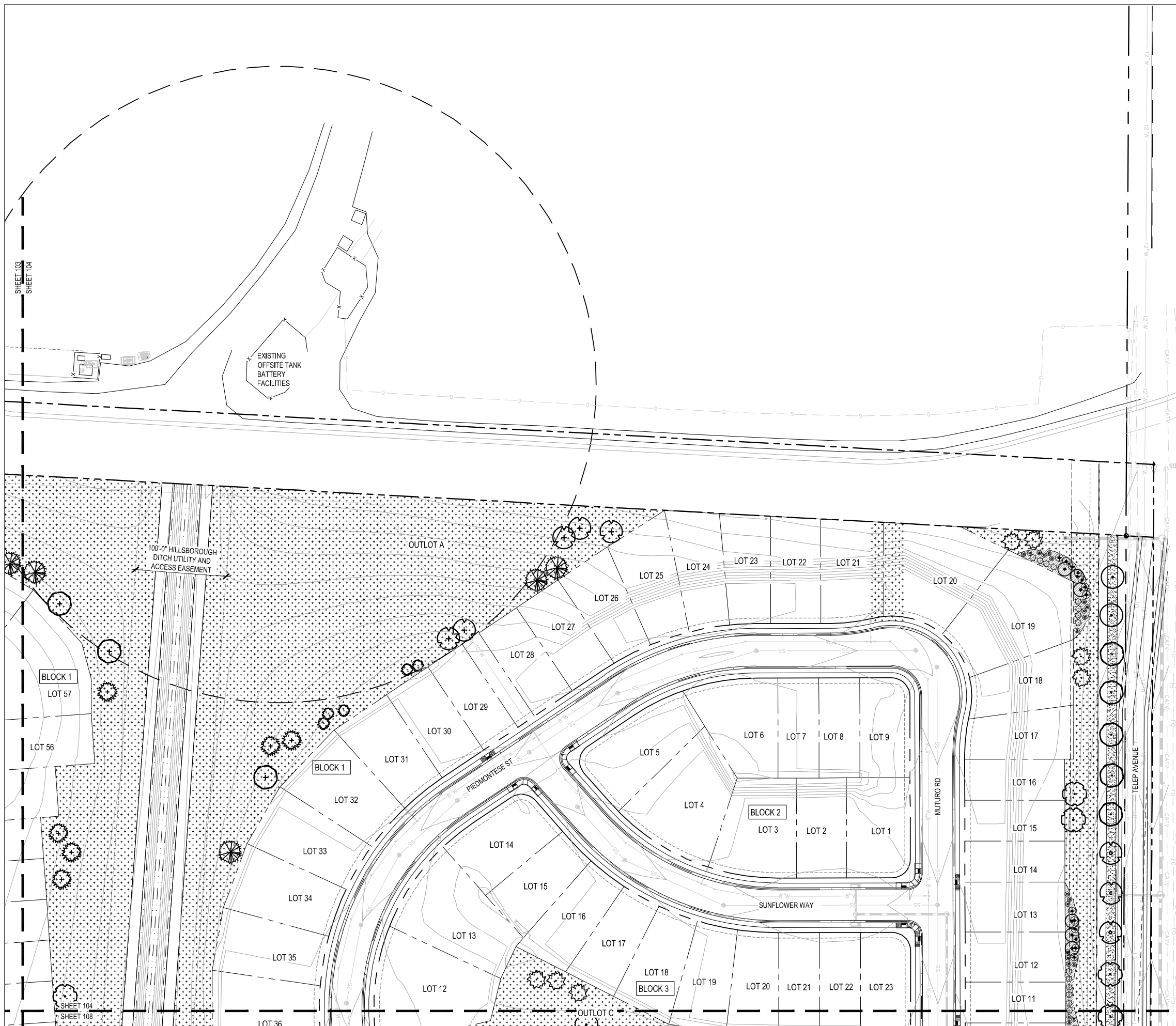
Date: 04.08.2021
Drawn By: SL & DD
Checked By: CR

Sheet Name
LANDSCAPE PLAN

Sheet
LP103

- LANDSCAPE LEGEND:**
- PROPERTY LINE
 - - - EASEMENT
 - - - 150' PLUGGED AND ABANDONED OIL FACILITY SETBACK
 - - - 350' ACTIVE OIL FACILITY SETBACK
 - - - LANDSCAPE BUFFER
 - ▨ SHRUB BED W/ WOOD MULCH (4" DEPTH)
 - ▤ RTF FESCUE BLEND
 - ▥ HYBRID BLUEGRASS
 - ▧ DETENTION SEED MIX
 - ▩ UPLAND SEED MIX
 - ▬ 100 YEAR WATER LINE





LANDSCAPE LEGEND:

	PROPERTY LINE
	EASEMENT
	150' PLUGGED AND ABANDONED OIL FACILITY SETBACK
	350' ACTIVE OIL FACILITY SETBACK
	LANDSCAPE BUFFER
	SHRUB BED W/ WOOD MULCH (4" DEPTH)
	RTF FESCUE BLEND
	HYBRID BLUEGRASS
	DETENTION SEED MIX
	UPLAND SEED MIX
	100 YEAR WATER LINE

THE GRANARY
Johnstown, Colorado

NOT FOR
CONSTRUCTION

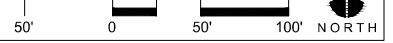
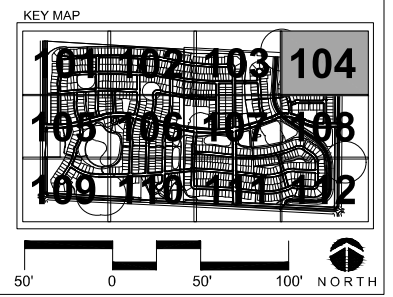
REV.	COMMENT	DATE

PRELIMINARY
DEVELOPMENT
PLAN

Date: 04.08.2021
 Drawn By: SL & DD
 Checked By: CR

Sheet Name
 LANDSCAPE PLAN

Sheet
 LP104





LANDSCAPE LEGEND:

- PROPERTY LINE
- - - EASEMENT
- - - 150' PLUGGED AND ABANDONED OIL FACILITY SETBACK
- - - 350' ACTIVE OIL FACILITY SETBACK
- - - LANDSCAPE BUFFER
- [Pattern] SHRUB BED W/ WOOD MULCH (4" DEPTH)
- [Pattern] RTF FESCUE BLEND
- [Pattern] HYBRID BLUEGRASS
- [Pattern] DETENTION SEED MIX
- [Pattern] UPLAND SEED MIX
- [Pattern] 100 YEAR WATER LINE



NOT FOR CONSTRUCTION

REV.	COMMENT	DATE

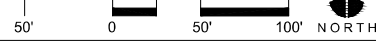
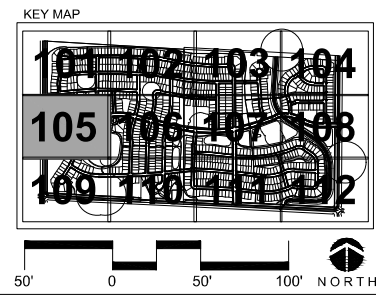
PRELIMINARY DEVELOPMENT PLAN

Date: 04.08.2021
 Drawn By: SL & DD
 Checked By: CR

Sheet Name
 LANDSCAPE PLAN

Sheet

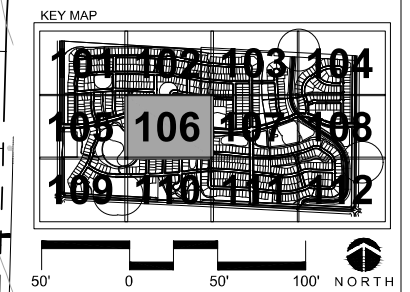
LP105





LANDSCAPE LEGEND:

- PROPERTY LINE
- - - EASEMENT
- - - 150' PLUGGED AND ABANDONED OIL FACILITY SETBACK
- - - 350' ACTIVE OIL FACILITY SETBACK
- - - LANDSCAPE BUFFER
- ▨ SHRUB BED W/ WOOD MULCH (4" DEPTH)
- ▨ RTF FESCUE BLEND
- ▨ HYBRID BLUEGRASS
- ▨ DETENTION SEED MIX
- ▨ UPLAND SEED MIX
- ▨ 100 YEAR WATER LINE



THE GRANARY
Johnstown, Colorado



NOT FOR CONSTRUCTION

REV.	COMMENT	DATE

PRELIMINARY DEVELOPMENT PLAN

Date: 04.08.2021
 Drawn By: SL & DD
 Checked By: CR

Sheet Name
 LANDSCAPE PLAN

Sheet
 LP106



THE GRANARY
Johnstown, Colorado



NOT FOR
CONSTRUCTION

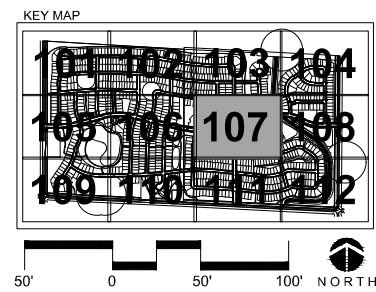
REV.	COMMENT	DATE

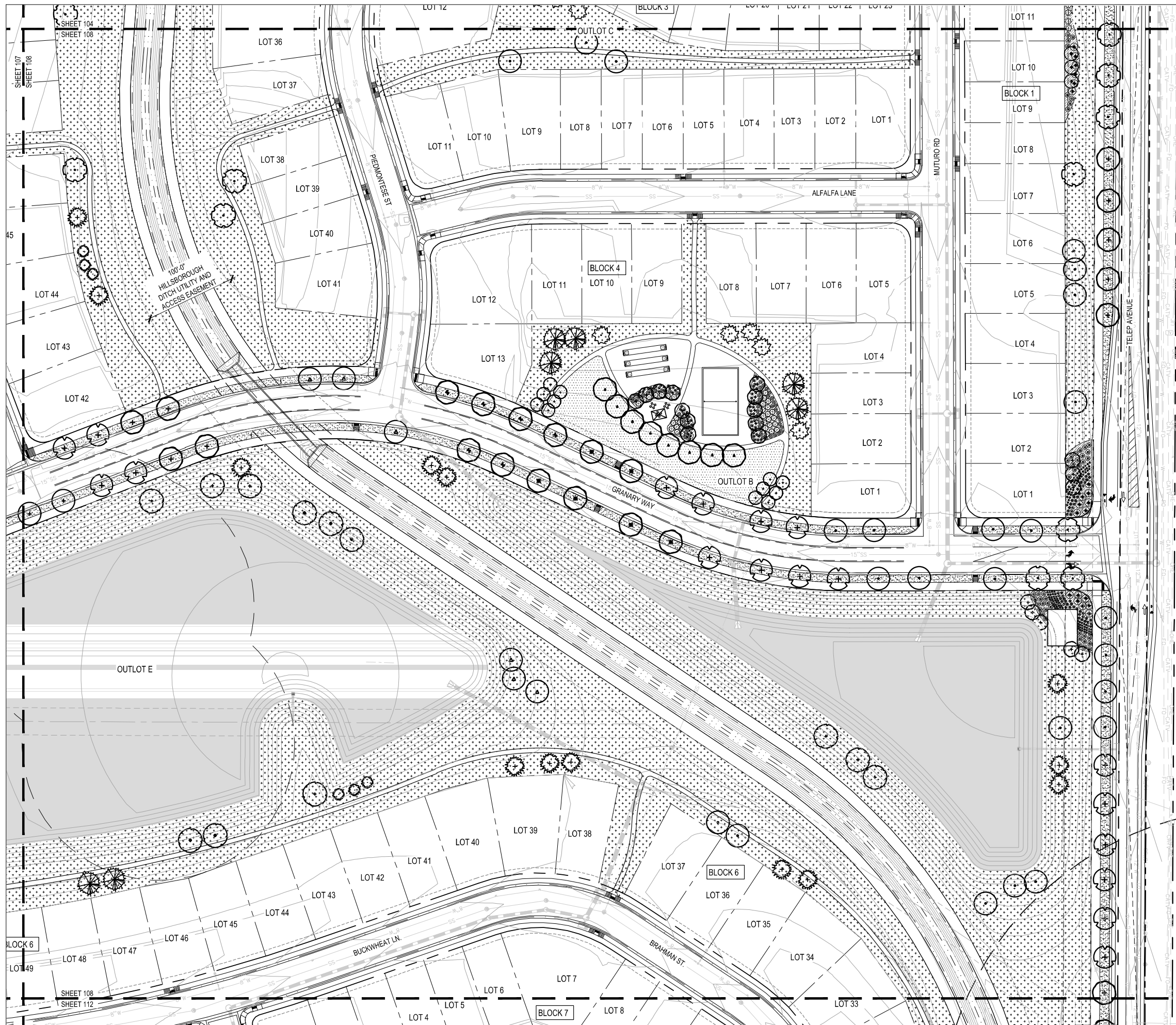
PRELIMINARY
DEVELOPMENT
PLAN

Date: 04.08.2021
Drawn By: SL & DD
Checked By: CR

Sheet Name
LANDSCAPE PLAN

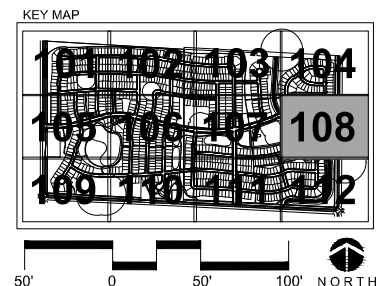
Sheet
LP107





LANDSCAPE LEGEND:

---	PROPERTY LINE
- - - -	EASEMENT
- - - -	150' PLUGGED AND ABANDONED OIL FACILITY SETBACK
- - - -	350' ACTIVE OIL FACILITY SETBACK
- - - -	LANDSCAPE BUFFER
[Pattern]	SHRUB BED W/ WOOD MULCH (4" DEPTH)
[Pattern]	RTF FESCUE BLEND
[Pattern]	HYBRID BLUEGRASS
[Pattern]	DETENTION SEED MIX
[Pattern]	UPLAND SEED MIX
[Pattern]	100 YEAR WATER LINE



THE GRANARY
Johnstown, Colorado



NOT FOR CONSTRUCTION

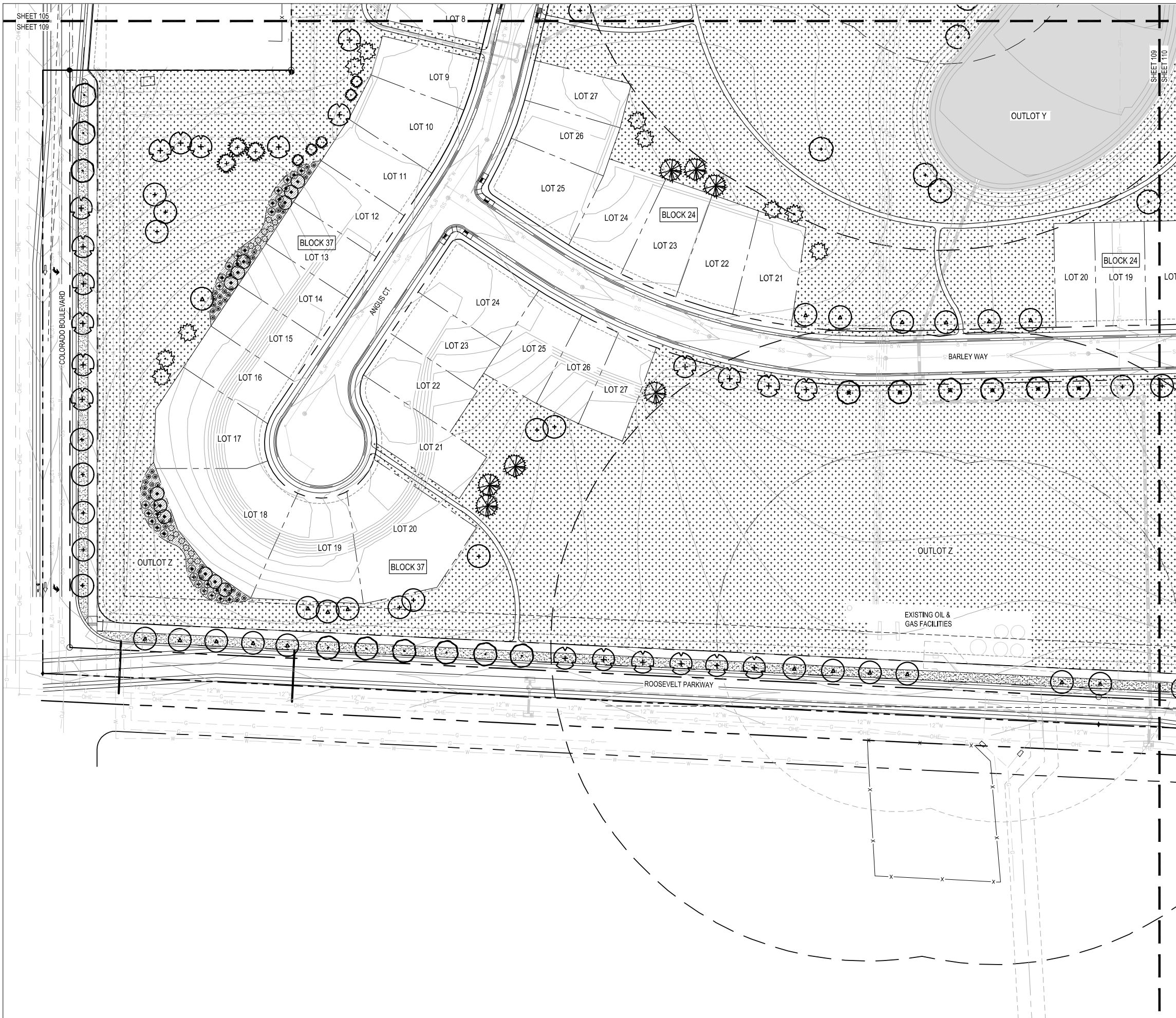
REV.	COMMENT	DATE

PRELIMINARY DEVELOPMENT PLAN

Date: 04.08.2021
 Drawn By: SL & DD
 Checked By: CR

Sheet Name
 LANDSCAPE PLAN

Sheet
 LP108



LANDSCAPE LEGEND:

- PROPERTY LINE
- - - EASEMENT
- - - 150' PLUGGED AND ABANDONED OIL FACILITY SETBACK
- - - 350' ACTIVE OIL FACILITY SETBACK
- - - LANDSCAPE BUFFER
- ▨ SHRUB BED W/ WOOD MULCH (4" DEPTH)
- ▨ RTF FESCUE BLEND
- ▨ HYBRID BLUEGRASS
- ▨ DETENTION SEED MIX
- ▨ UPLAND SEED MIX
- ▨ 100 YEAR WATER LINE

THE GRANARY
Johnstown, Colorado

NOT FOR CONSTRUCTION

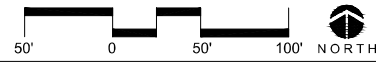
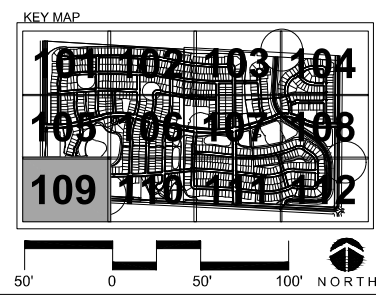
REV.	COMMENT	DATE

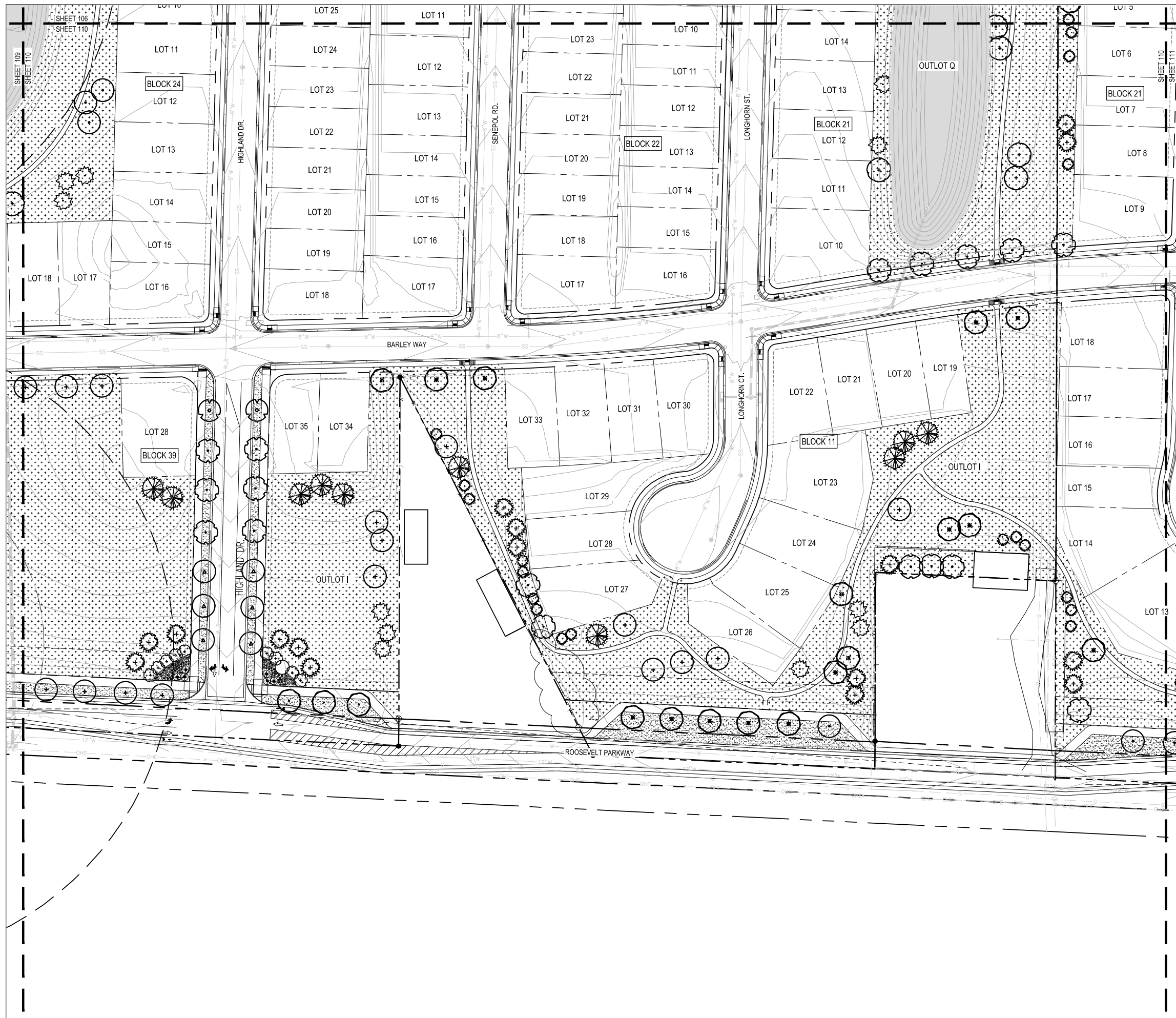
PRELIMINARY DEVELOPMENT PLAN

Date: 04.08.2021
 Drawn By: SL & DD
 Checked By: CR
 Sheet Name

LANDSCAPE PLAN
 Sheet

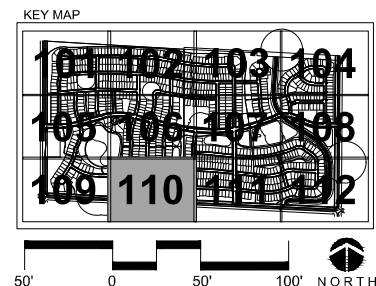
LP109





LANDSCAPE LEGEND:

	PROPERTY LINE
	EASEMENT
	150' PLUGGED AND ABANDONED OIL FACILITY SETBACK
	350' ACTIVE OIL FACILITY SETBACK
	LANDSCAPE BUFFER
	SHRUB BED W/ WOOD MULCH (4" DEPTH)
	RTF FESCUE BLEND
	HYBRID BLUEGRASS
	DETENTION SEED MIX
	UPLAND SEED MIX
	100 YEAR WATER LINE



THE GRANARY
Johnstown, Colorado



NOT FOR CONSTRUCTION

REV.	COMMENT	DATE

PRELIMINARY DEVELOPMENT PLAN

Date: 04.08.2021
 Drawn By: SL & DD
 Checked By: CR

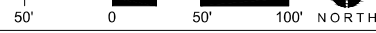
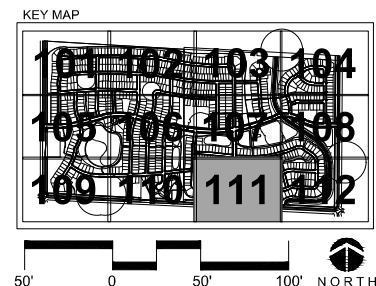
Sheet Name
 LANDSCAPE PLAN

Sheet
 LP110



LANDSCAPE LEGEND:

- PROPERTY LINE
- - - EASEMENT
- - - 150' PLUGGED AND ABANDONED OIL FACILITY SETBACK
- - - 350' ACTIVE OIL FACILITY SETBACK
- - - LANDSCAPE BUFFER
- [Pattern] SHRUB BED W/ WOOD MULCH (4" DEPTH)
- [Pattern] RTF FESCUE BLEND
- [Pattern] HYBRID BLUEGRASS
- [Pattern] DETENTION SEED MIX
- [Pattern] UPLAND SEED MIX
- [Pattern] 100 YEAR WATER LINE



THE GRANARY
Johnstown, Colorado



NOT FOR CONSTRUCTION

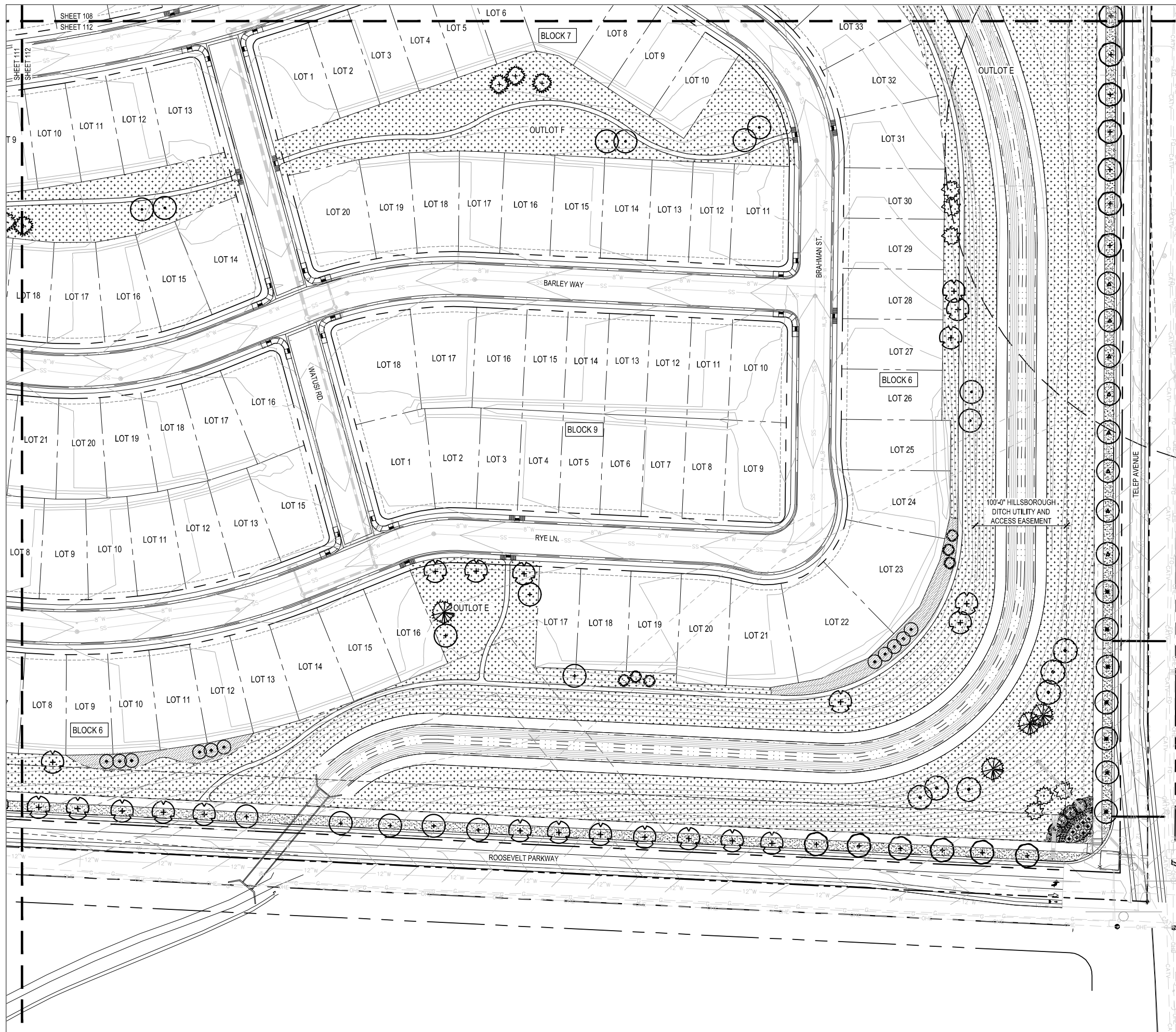
REV.	COMMENT	DATE

PRELIMINARY DEVELOPMENT PLAN

Date: 04.08.2021
 Drawn By: SL & DD
 Checked By: CR
 Sheet Name

LANDSCAPE PLAN
 Sheet

LP111



- LANDSCAPE LEGEND:**
- PROPERTY LINE
 - EASEMENT
 - 150' PLUGGED AND ABANDONED OIL FACILITY SETBACK
 - 350' ACTIVE OIL FACILITY SETBACK
 - LANDSCAPE BUFFER
 - ▨ SHRUB BED W/ WOOD MULCH (4" DEPTH)
 - ▨ RTF FESCUE BLEND
 - ▨ HYBRID BLUEGRASS
 - ▨ DETENTION SEED MIX
 - ▨ UPLAND SEED MIX
 - ▨ 100 YEAR WATER LINE



NOT FOR CONSTRUCTION

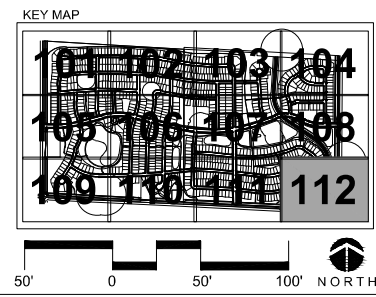
REV.	COMMENT	DATE

PRELIMINARY DEVELOPMENT PLAN

Date: 04.08.2021
 Drawn By: SL & DD
 Checked By: CR
 Sheet Name

LANDSCAPE PLAN
 Sheet

LP112



THE GRANARY

Johnstown, Colorado



NOT FOR CONSTRUCTION

REV.	COMMENT	DATE

PRELIMINARY DEVELOPMENT PLAN

Date: 04.08.2021

Drawn By: SL & DD

Checked By: CR

Sheet Name

OPEN SPACE PLAN

Sheet

OS100



OPEN SPACE CHART

OUTLOT	SQUARE FEET	ACRES	OWNERSHIP	MAINTENANCE	USE	PERCENTAGE
OUTLOT A	771,211	17.705	METRO DISTRICT	METRO DISTRICT	PEDESTRIAN ACCESS, UTILITY AND DRAINAGE EASEMENT, OPEN SPACE	
OUTLOT B	53,831	1.236	METRO DISTRICT	METRO DISTRICT	PEDESTRIAN ACCESS, UTILITY AND DRAINAGE EASEMENT, OPEN SPACE	
OUTLOT C	24,416	0.561	METRO DISTRICT	METRO DISTRICT	PEDESTRIAN ACCESS, UTILITY AND DRAINAGE EASEMENT, OPEN SPACE	
OUTLOT D	128,518	2.950	METRO DISTRICT	METRO DISTRICT	PEDESTRIAN ACCESS, UTILITY AND DRAINAGE EASEMENT, OPEN SPACE	
OUTLOT E	975,816	22.402	METRO DISTRICT	METRO DISTRICT	PEDESTRIAN ACCESS, UTILITY AND DRAINAGE EASEMENT, OPEN SPACE	
OUTLOT F	40,243	0.924	METRO DISTRICT	METRO DISTRICT	PEDESTRIAN ACCESS, UTILITY AND DRAINAGE EASEMENT, OPEN SPACE	
OUTLOT G	39,841	0.915	METRO DISTRICT	METRO DISTRICT	PEDESTRIAN ACCESS, UTILITY AND DRAINAGE EASEMENT, OPEN SPACE	
OUTLOT H	24,687	0.567	METRO DISTRICT	METRO DISTRICT	PEDESTRIAN ACCESS, UTILITY AND DRAINAGE EASEMENT, OPEN SPACE	
OUTLOT I	209,027	4.799	METRO DISTRICT	METRO DISTRICT	PEDESTRIAN ACCESS, UTILITY AND DRAINAGE EASEMENT, OPEN SPACE	
OUTLOT J	117,708	2.702	METRO DISTRICT	METRO DISTRICT	PEDESTRIAN ACCESS, UTILITY AND DRAINAGE EASEMENT, OPEN SPACE	
OUTLOT K	6,430	0.148	METRO DISTRICT	METRO DISTRICT	PEDESTRIAN ACCESS, UTILITY AND DRAINAGE EASEMENT, OPEN SPACE	
OUTLOT L	12,455	0.286	METRO DISTRICT	METRO DISTRICT	PEDESTRIAN ACCESS, UTILITY AND DRAINAGE EASEMENT, OPEN SPACE	
OUTLOT M	12,656	0.288	METRO DISTRICT	METRO DISTRICT	PEDESTRIAN ACCESS, UTILITY AND DRAINAGE EASEMENT, OPEN SPACE	
OUTLOT N	11,136	0.256	METRO DISTRICT	METRO DISTRICT	PEDESTRIAN ACCESS, UTILITY AND DRAINAGE EASEMENT, OPEN SPACE	
OUTLOT O	10,280	0.236	METRO DISTRICT	METRO DISTRICT	PEDESTRIAN ACCESS, UTILITY AND DRAINAGE EASEMENT, OPEN SPACE	
OUTLOT P	211,395	4.853	METRO DISTRICT	METRO DISTRICT	PEDESTRIAN ACCESS, UTILITY AND DRAINAGE EASEMENT, OPEN SPACE	
OUTLOT Q	161,362	3.704	METRO DISTRICT	METRO DISTRICT	PEDESTRIAN ACCESS, UTILITY AND DRAINAGE EASEMENT, OPEN SPACE	
OUTLOT R	6,106	0.140	METRO DISTRICT	METRO DISTRICT	PEDESTRIAN ACCESS, UTILITY AND DRAINAGE EASEMENT, OPEN SPACE	
OUTLOT S	3,565	0.082	METRO DISTRICT	METRO DISTRICT	PEDESTRIAN ACCESS, UTILITY AND DRAINAGE EASEMENT, OPEN SPACE	
OUTLOT T	6,131	0.141	METRO DISTRICT	METRO DISTRICT	PEDESTRIAN ACCESS, UTILITY AND DRAINAGE EASEMENT, OPEN SPACE	
OUTLOT U	71,992	1.653	METRO DISTRICT	METRO DISTRICT	PEDESTRIAN ACCESS, UTILITY AND DRAINAGE EASEMENT, OPEN SPACE	
OUTLOT V	34,195	0.785	METRO DISTRICT	METRO DISTRICT	PEDESTRIAN ACCESS, UTILITY AND DRAINAGE EASEMENT, OPEN SPACE	
OUTLOT W	32,348	0.743	METRO DISTRICT	METRO DISTRICT	PEDESTRIAN ACCESS, UTILITY AND DRAINAGE EASEMENT, OPEN SPACE	
OUTLOT X	37,043	0.850	METRO DISTRICT	METRO DISTRICT	PEDESTRIAN ACCESS, UTILITY AND DRAINAGE EASEMENT, OPEN SPACE	
OUTLOT Y	530,951	12.189	METRO DISTRICT	METRO DISTRICT	PEDESTRIAN ACCESS, UTILITY AND DRAINAGE EASEMENT, OPEN SPACE	
OUTLOT Z	485,025	11.135	METRO DISTRICT	METRO DISTRICT	PEDESTRIAN ACCESS, UTILITY AND DRAINAGE EASEMENT, OPEN SPACE	
OUTLOT AA	79,715	1.830	METRO DISTRICT	METRO DISTRICT	PEDESTRIAN ACCESS, UTILITY AND DRAINAGE EASEMENT, OPEN SPACE	
OUTLOT BB	9,852	0.226	METRO DISTRICT	METRO DISTRICT	PEDESTRIAN ACCESS, UTILITY AND DRAINAGE EASEMENT, OPEN SPACE	
OUTLOT CC	3,865	0.089	METRO DISTRICT	METRO DISTRICT	PEDESTRIAN ACCESS, UTILITY AND DRAINAGE EASEMENT, OPEN SPACE	
TOTAL OUTLOTS	4,111,709	94.392				32.02%
TOTAL PUD AREA		294.763				

OIL AND GAS FACILITIES INFORMATION

OUTLOT E
 OWNER: PDC ENERGY INC - 69175
 NUMBER OF WELLS: 5
 NAMES OF WELLS: 7-33 KETO, 7-43 KETO, 7-34 KETO, 7-44 KETO, 3-7J KETO
 TYPE OF WELL: DIRECTIONAL, PLUGGED AND ABANDONED
 OTHER FACILITIES ON SITE: NONE, ALL LINES REMOVED
 STATUS: PLUGGED AND ABANDONED

OUTLOT Q
 OWNER: KERR MCGEE OIL & GAS ONSHORE LP - 47120
 NUMBER OF WELLS: 1
 NAME OF WELL: 1 MAPLEWOOD
 TYPE OF WELL: PLUGGED AND ABANDONED
 OTHER FACILITIES ON SITE: NONE, ALL LINES REMOVED
 STATUS: PLUGGED AND ABANDONED

OUTLOT U
 OWNER: KERR MCGEE OIL & GAS ONSHORE LP - 47120
 NAME OF WELL: 12-7 HSR-MAPLEWOOD ACRES
 TYPE OF WELL: PLUGGED AND ABANDONED
 OTHER FACILITIES ON SITE: NONE, ALL LINES REMOVED
 STATUS: PLUGGED AND ABANDONED

OUTLOT Y
 OWNER: KERR-MCGEE/OXY/ANADARKO
 NUMBER OF WELLS: 5
 WELL NAMES: 13-7 MAPLEWOOD (SHUT IN), 22-7 MAPLEWOOD (PRODUCING), 35-7 MAPLEWOOD (PRODUCING), 23-7 MAPLEWOOD (PRODUCING), 14-7 MAPLEWOOD (PRODUCING)
 TYPE OF WELL: DIRECTIONAL
 OTHER FACILITIES ON SITE: NONE
 OWNER: SHUT IN (1) AND PRODUCING (4)

OUTLOT Z
 OWNER: KERR-MCGEE/OXY/ANADARKO
 NUMBER OF WELLS: 0
 TYPE OF WELL: N/A
 OTHER FACILITIES ON SITE: TANK BATTERY FACILITY
 STATUS: ACTIVE

OPEN SPACE LEGEND:

- PROPERTY LINE
- - - LOT LINE
- - - EASEMENT
- - - LANDSCAPE BUFFER
- - - 150' PLUGGED AND ABANDONED OIL FACILITY SETBACK
- - - 350' ACTIVE OIL FACILITY SETBACK
- OPEN SPACE
- OPEN SPACE - PARK

