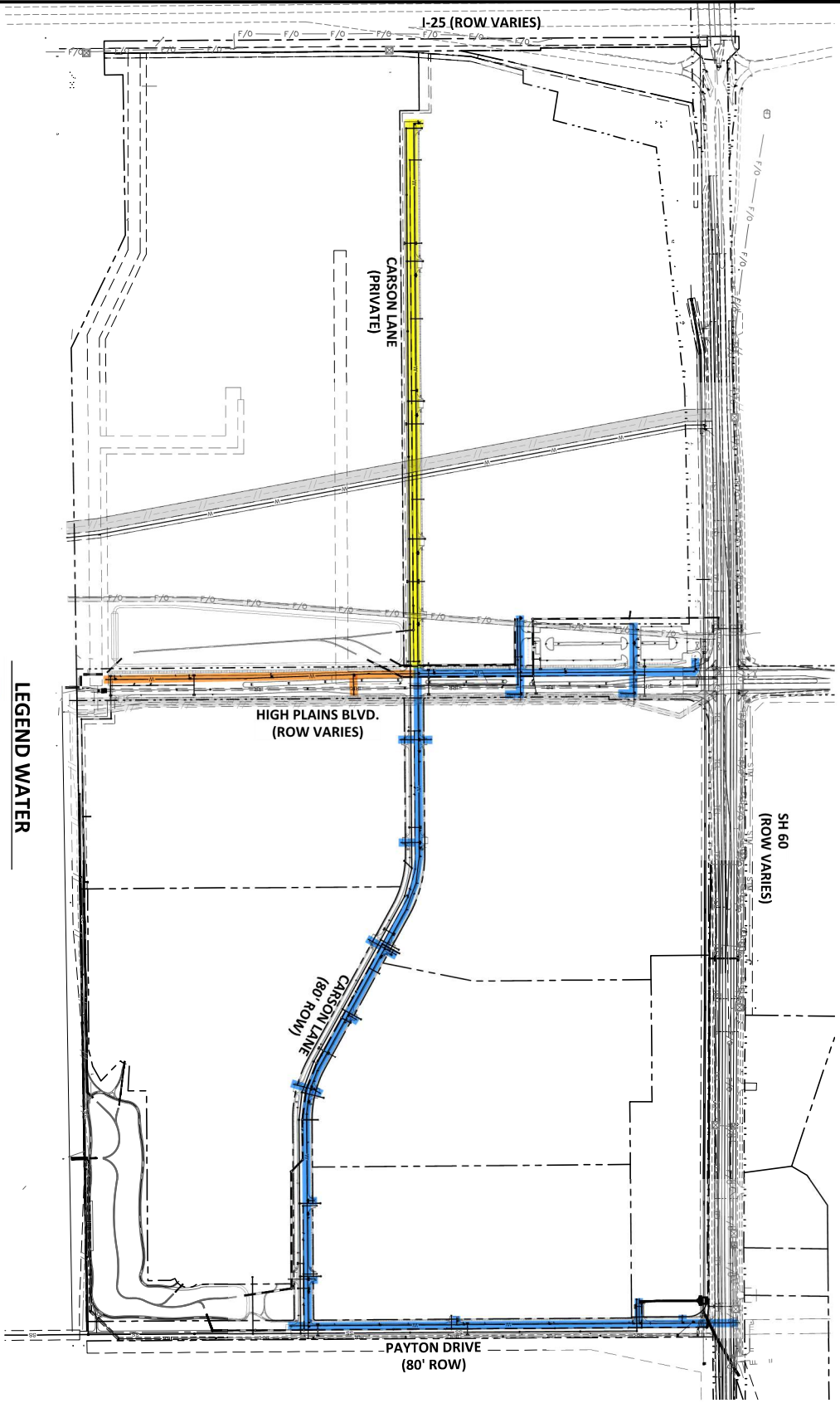


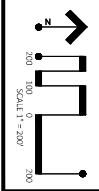
**LEDGE ROCK CENTER
PUBLIC IMPROVEMENT PLANS
SITE COMPLETION EXHIBITS**

A PARCEL OF LAND, SITUATED IN THE NORTHWEST ONE-QUARTER OF SECTION 11,
TOWNSHIP 4 NORTH, RANGE 68 WEST OF THE SIXTH PRINCIPAL MERIDIAN,
TOWN OF JOHNSTOWN, COUNTY OF WELD, STATE OF COLORADO



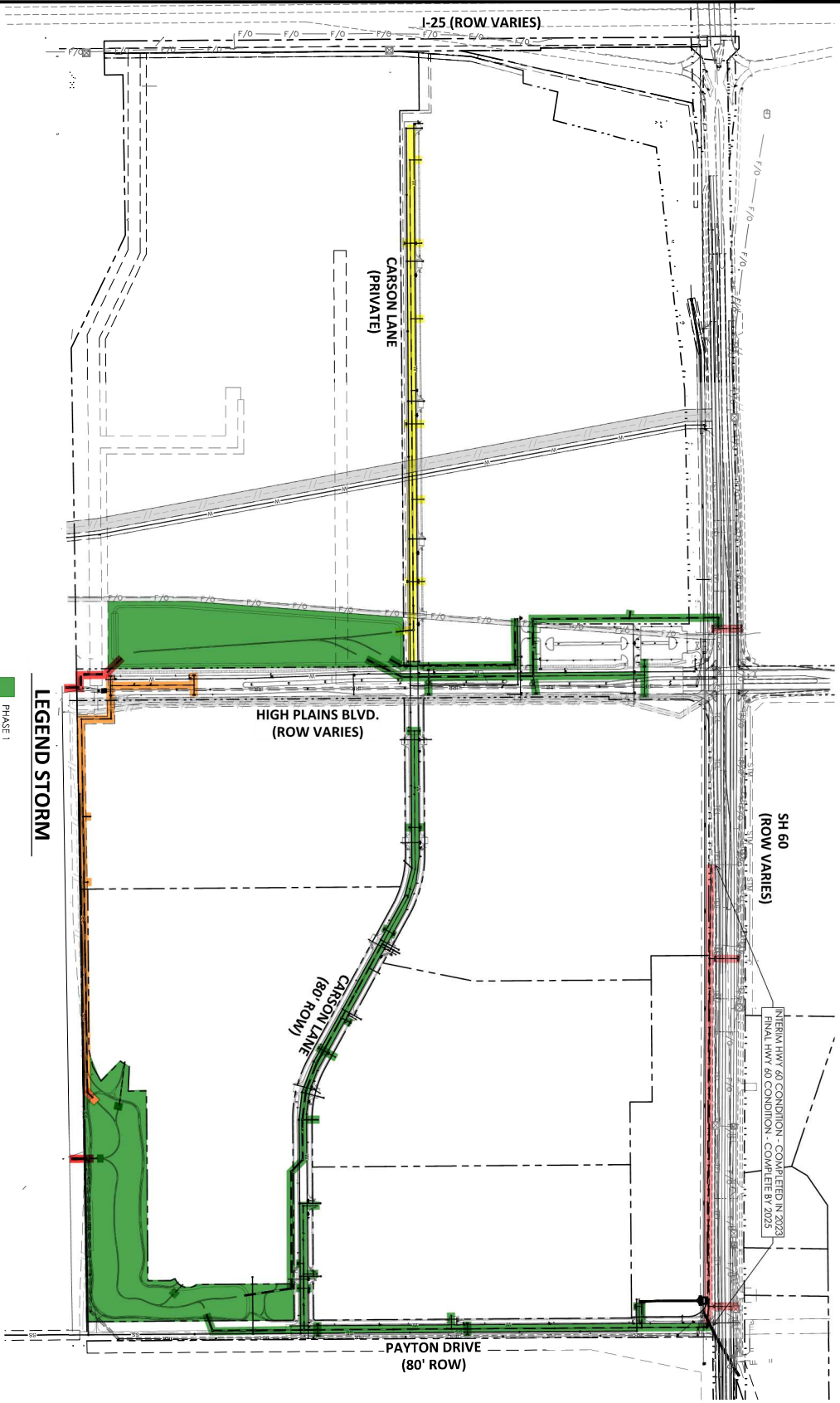
LEGEND WATER

- PHASE 1
- PHASE 3
- PHASE 4

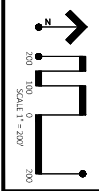



DATE	DESCRIPTION	PUBLIC IMPROVEMENT PLANS		POINT CONSULTING, LLC
		LEDGE ROCK CENTER		8460 W KEN CARL AVE #101 LITTLETON, CO 80128 720-258-6830 WWW.PNT-LLC.COM
		JOHNSTOWN, COLORADO		PLANNING CIVIL ENGINEERING LANDSCAPE ARCHITECTURE LAND SURVEYING
1/6	WATER MAIN	JOB NO. 21.022	SITE COMPLETION EXHIBITS	

**LEDGE ROCK CENTER
PUBLIC IMPROVEMENT PLANS**
A PARCEL OF LAND, SITUATED IN THE NORTHWEST ONE-QUARTER OF SECTION 11,
TOWNSHIP 4 NORTH, RANGE 68 WEST OF THE SIXTH PRINCIPAL MERIDIAN,
TOWN OF JOHNSTOWN, COUNTY OF WELD, STATE OF COLORADO
SITE COMPLETION EXHIBITS



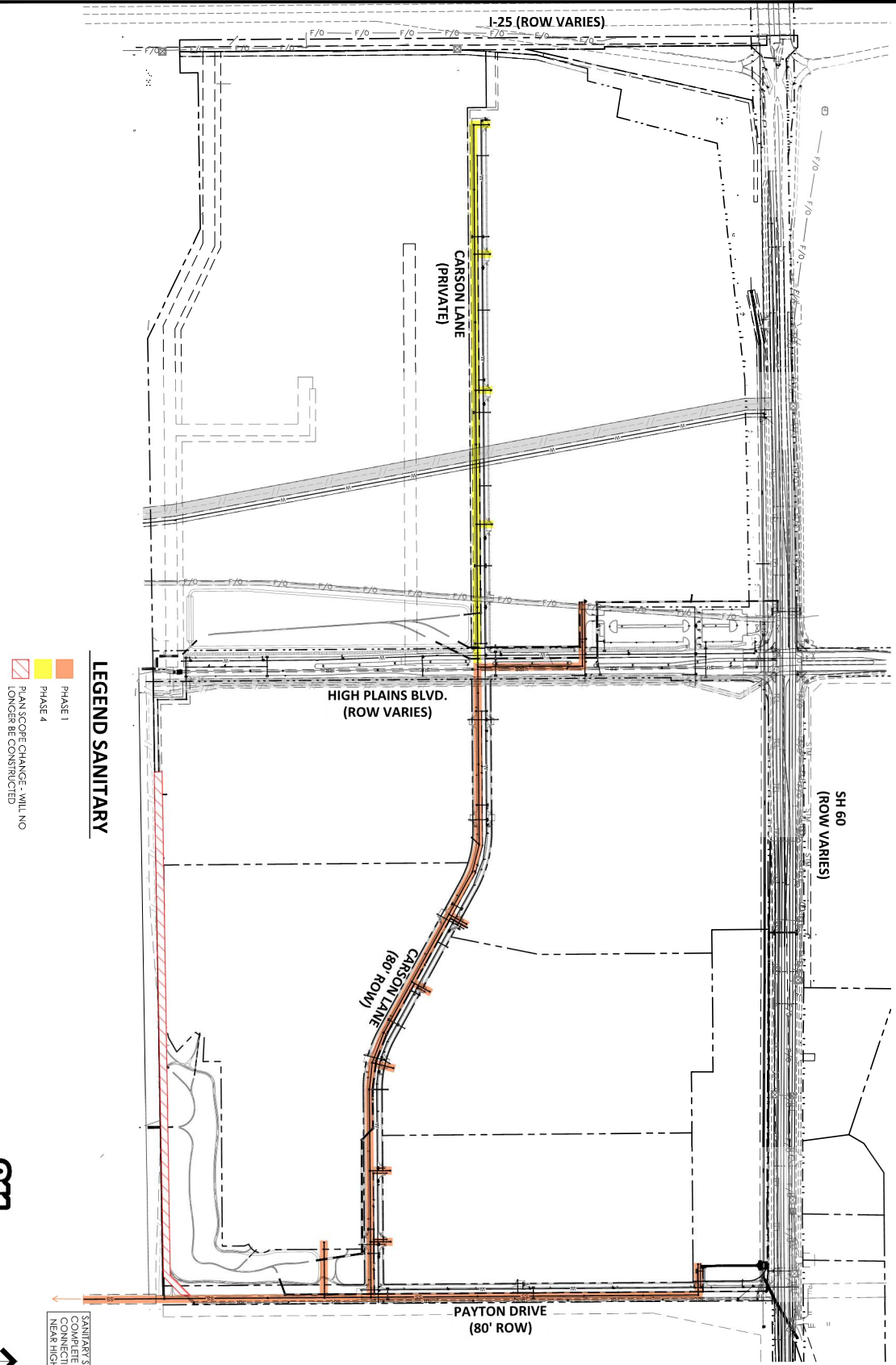
- LEGEND STORM**
- PHASE 1
 - PHASE 2A
 - PHASE 3 - IN COORDINATION WITH CDOT
 - PHASE 4



DATE	DESCRIPTION	PUBLIC IMPROVEMENT PLANS		POINT CONSULTING, LLC 8460 W KEN CARYL AVE #101 LITTLETON, CO 80128 720-258-6836 WWW.PNT-LLC.COM PLANNING CIVIL ENGINEERING LANDSCAPE ARCHITECTURE LAND SURVEYING
		LEDGE ROCK CENTER		
2/6	STORM SEWER	JOHNSTOWN, COLORADO		
		JOB NO. 21.022		

**LEDGE ROCK CENTER
PUBLIC IMPROVEMENT PLANS
SITE COMPLETION EXHIBITS**

A PARCEL OF LAND, SITUATED IN THE NORTHWEST ONE-QUARTER OF SECTION 11,
TOWNSHIP 4 NORTH, RANGE 68 WEST OF THE SIXTH PRINCIPAL MERIDIAN,
TOWN OF JOHNSTOWN, COUNTY OF WELD, STATE OF COLORADO

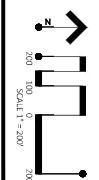


LEGEND SANITARY

PHASE 1
PHASE 4

PLAN SCOPE CHANGE - WILL NO LONGER BE CONSTRUCTED

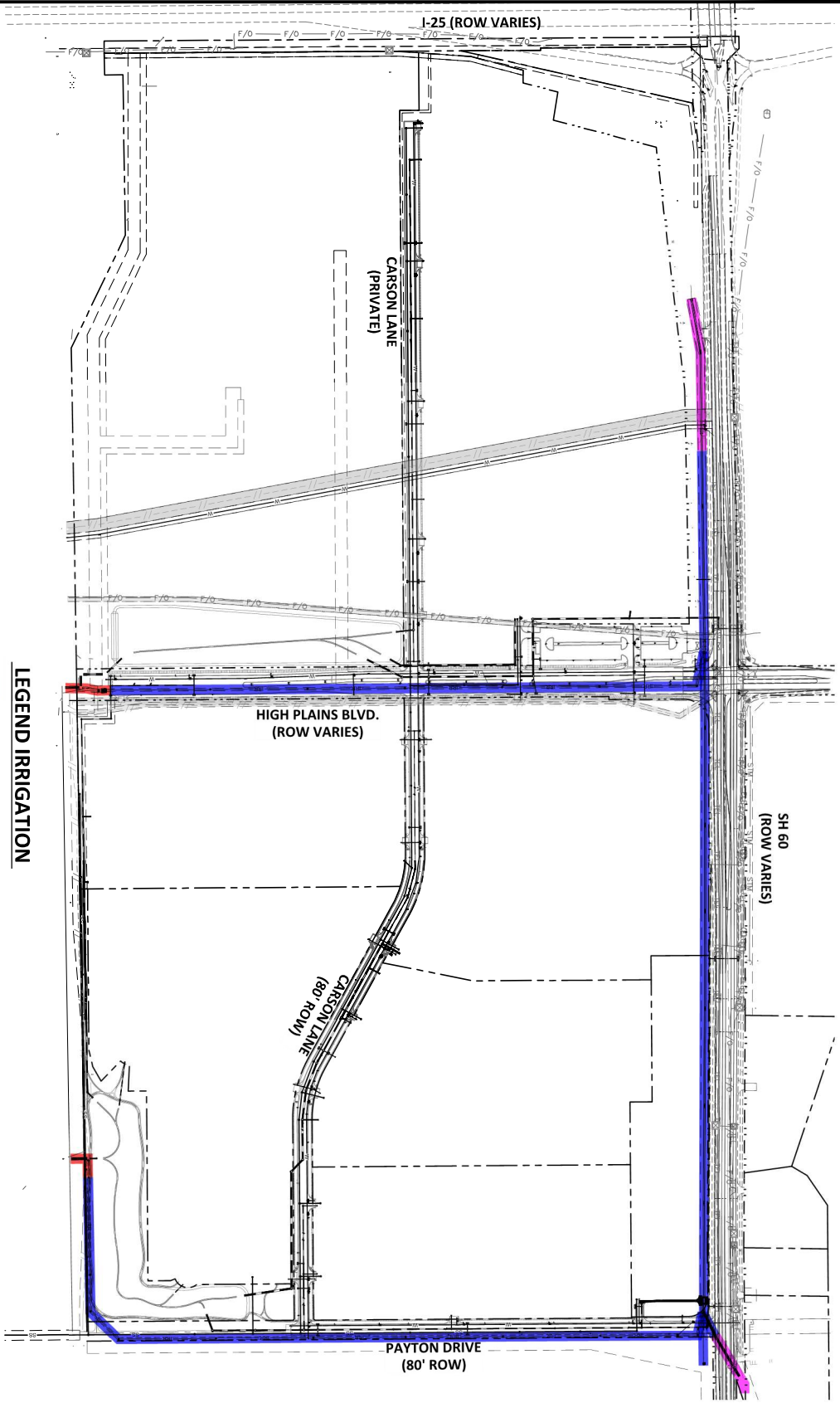
SANITARY SEWER LINE COMPLETE THROUGH CONNECTION POINT NEAR HIGH SCHOOL



DATE	DESCRIPTION	PUBLIC IMPROVEMENT PLANS		POINT CONSULTING, LLC 8460 W KEN CARYL AVE #101 LITTLETON, CO 80128 720-258-6830 WWW.PNT-LLC.COM PLANNING CIVIL ENGINEERING LANDSCAPE ARCHITECTURE LAND SURVEYING
		LEDGE ROCK CENTER	SITE COMPLETION EXHIBITS	
3/6	SANITARY SEWER	JOHNSTOWN, COLORADO	JOB NO. 21.022	

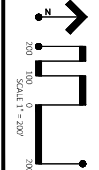
**LEDGE ROCK CENTER
PUBLIC IMPROVEMENT PLANS
SITE COMPLETION EXHIBITS**

A PARCEL OF LAND, SITUATED IN THE NORTHWEST ONE-QUARTER OF SECTION 11,
TOWNSHIP 4 NORTH, RANGE 68 WEST OF THE SIXTH PRINCIPAL MERIDIAN,
TOWN OF JOHNSTOWN, COUNTY OF WELD, STATE OF COLORADO



LEGEND IRRIGATION

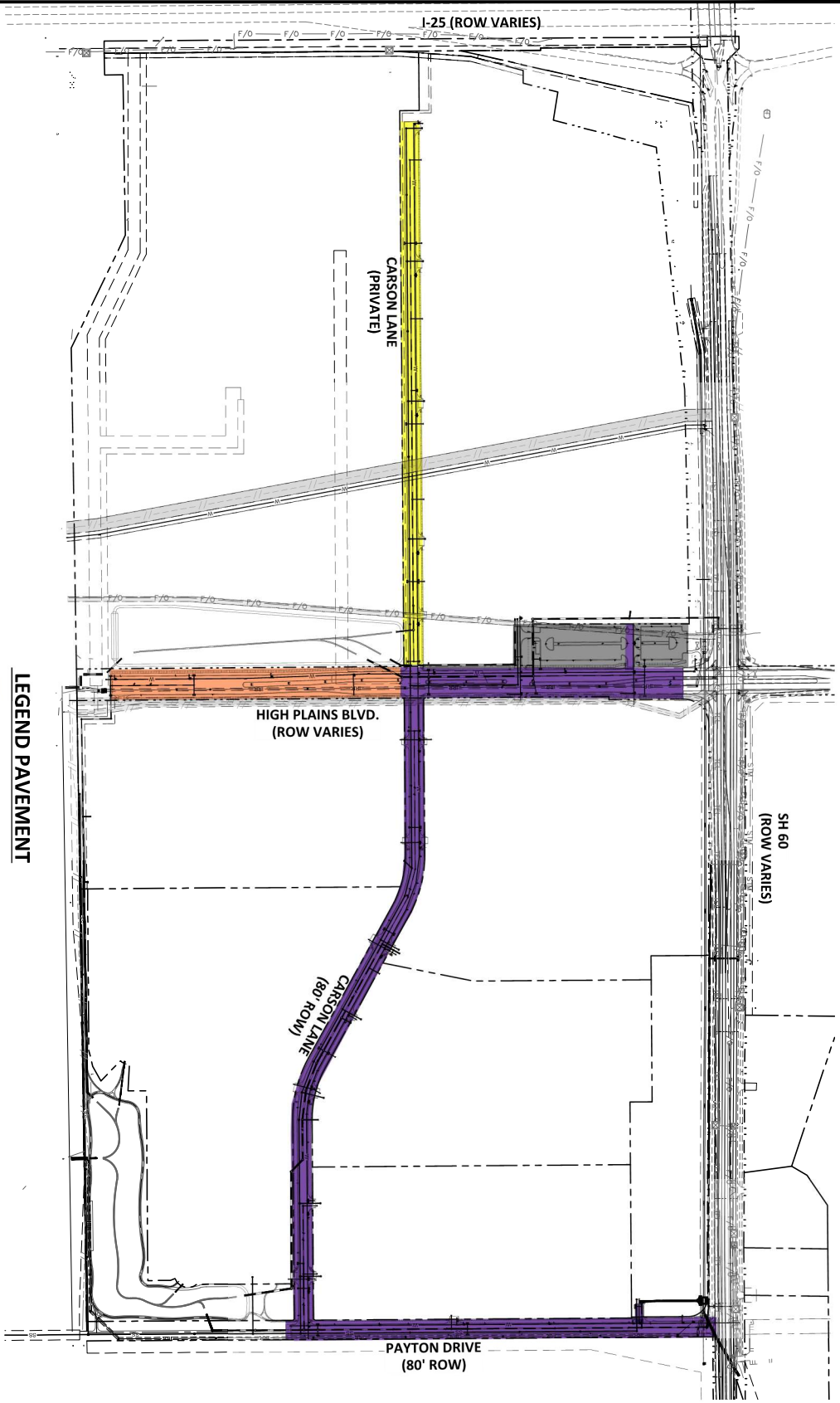
PHASE 1
PHASE 2
PHASE 6



DATE	DESCRIPTION	PUBLIC IMPROVEMENT PLANS	LEDGE ROCK CENTER	SITE COMPLETION EXHIBITS	POINT CONSULTING, LLC 8460 W KEN CARYL AVE #101 LITTLETON, CO 80128 720-258-6830 WWW.PNT-LLC.COM PLANNING CIVIL ENGINEERING LANDSCAPE ARCHITECTURE LAND SURVEYING	
4/6	IRRIGATION HOME SUPPLY	JOHNSTOWN, COLORADO				

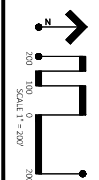
**LEDGE ROCK CENTER
PUBLIC IMPROVEMENT PLANS
SITE COMPLETION EXHIBITS**

A PARCEL OF LAND, SITUATED IN THE NORTHWEST ONE-QUARTER OF SECTION 11,
TOWNSHIP 4 NORTH, RANGE 68 WEST OF THE SIXTH PRINCIPAL MERIDIAN,
TOWN OF JOHNSTOWN, COUNTY OF WELD, STATE OF COLORADO



LEGEND PAVEMENT

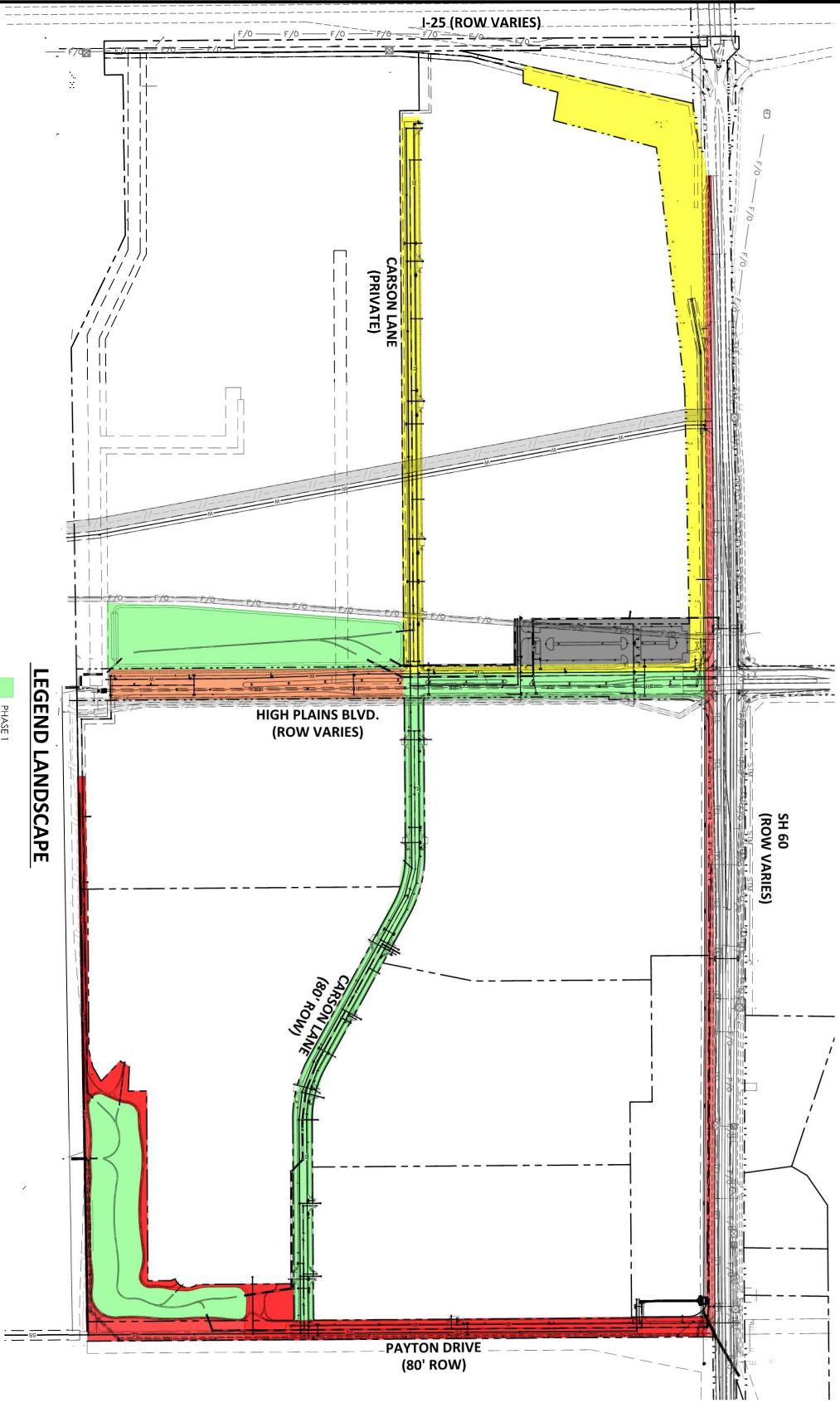
- PHASE 1
- PHASE 3
- PHASE 4
- PHASE 5



DATE	DESCRIPTION	PUBLIC IMPROVEMENT PLANS		POINT CONSULTING, LLC 8460 W KEN CARYL AVE #101 LITTLETON, CO 80128 720-258-6830 WWW.PNT-LLC.COM PLANNING CIVIL ENGINEERING LANDSCAPE ARCHITECTURE LAND SURVEYING
		LEDGE ROCK CENTER		
5/6	PAVEMENT/CONCRETE	JOHNSTOWN, COLORADO		
		JOB NO. 21.022		

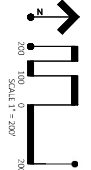
**LEDGE ROCK CENTER
PUBLIC IMPROVEMENT PLANS
SITE COMPLETION EXHIBITS**

A PARCEL OF LAND, SITUATED IN THE NORTHWEST ONE-QUARTER OF SECTION 11,
TOWNSHIP 4 NORTH, RANGE 68 WEST OF THE SIXTH PRINCIPAL MERIDIAN,
TOWN OF JOHNSTOWN, COUNTY OF WELD, STATE OF COLORADO



LEGEND LANDSCAPE

- PHASE 1
 - PHASE 2A
 - PHASE 3
 - PHASE 4
 - PHASE 5
- PHASE 2B - IN COORDINATION WITH CDOT



DATE	REV	DESCRIPTION

PUBLIC IMPROVEMENT PLANS
LEDGE ROCK CENTER
JOHNSTOWN, COLORADO

SITE COMPLETION EXHIBITS

POINT CONSULTING, LLC
8460 W KEN CARYL AVE #101
LITTLETON, CO 80128
720-258-6830
WWW.PNT-LLC.COM
PLANNING
CIVIL ENGINEERING
LANDSCAPE ARCHITECTURE
LAND SURVEYING