

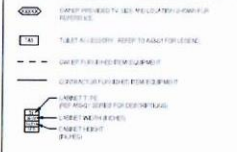


## Attachment C – Wall Demolition Sketch

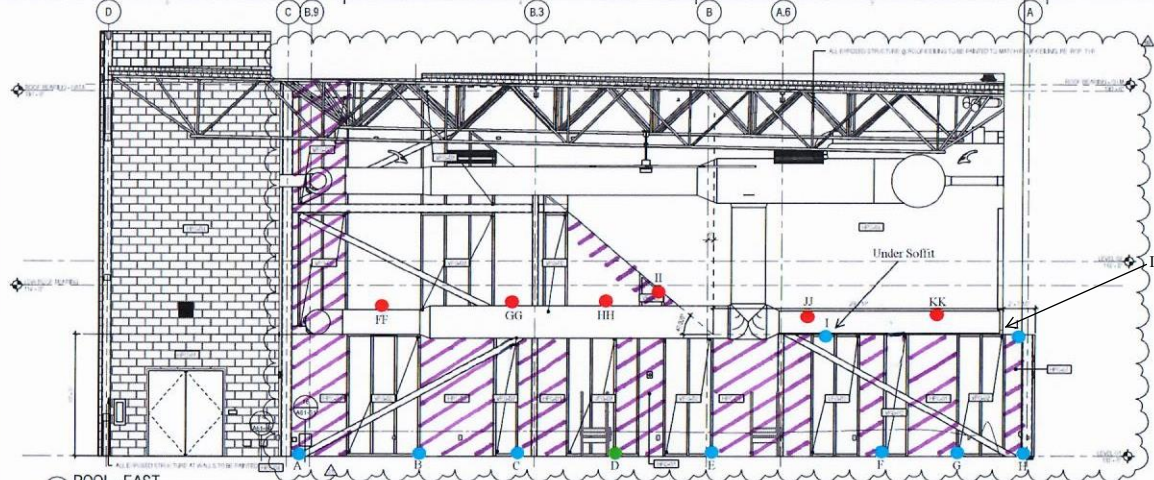
INTERIOR ELEVATION  
GENERAL NOTES

1. SEE SPECIFICATIONS FOR ELEVATION QUALITY. VERIFY ALL ELEVATION NOTES AND DIMENSIONS. VERIFY ALL DIMENSIONS AND MATERIALS.
2. VERIFY ALL DIMENSIONS AND MATERIALS. VERIFY ALL DIMENSIONS AND MATERIALS.
3. VERIFY ALL DIMENSIONS AND MATERIALS. VERIFY ALL DIMENSIONS AND MATERIALS.
4. VERIFY ALL DIMENSIONS AND MATERIALS. VERIFY ALL DIMENSIONS AND MATERIALS.
5. VERIFY ALL DIMENSIONS AND MATERIALS. VERIFY ALL DIMENSIONS AND MATERIALS.
6. VERIFY ALL DIMENSIONS AND MATERIALS. VERIFY ALL DIMENSIONS AND MATERIALS.
7. VERIFY ALL DIMENSIONS AND MATERIALS. VERIFY ALL DIMENSIONS AND MATERIALS.
8. VERIFY ALL DIMENSIONS AND MATERIALS. VERIFY ALL DIMENSIONS AND MATERIALS.
9. VERIFY ALL DIMENSIONS AND MATERIALS. VERIFY ALL DIMENSIONS AND MATERIALS.
10. VERIFY ALL DIMENSIONS AND MATERIALS. VERIFY ALL DIMENSIONS AND MATERIALS.
11. VERIFY ALL DIMENSIONS AND MATERIALS. VERIFY ALL DIMENSIONS AND MATERIALS.
12. VERIFY ALL DIMENSIONS AND MATERIALS. VERIFY ALL DIMENSIONS AND MATERIALS.
13. VERIFY ALL DIMENSIONS AND MATERIALS. VERIFY ALL DIMENSIONS AND MATERIALS.
14. VERIFY ALL DIMENSIONS AND MATERIALS. VERIFY ALL DIMENSIONS AND MATERIALS.
15. VERIFY ALL DIMENSIONS AND MATERIALS. VERIFY ALL DIMENSIONS AND MATERIALS.
16. VERIFY ALL DIMENSIONS AND MATERIALS. VERIFY ALL DIMENSIONS AND MATERIALS.
17. VERIFY ALL DIMENSIONS AND MATERIALS. VERIFY ALL DIMENSIONS AND MATERIALS.
18. VERIFY ALL DIMENSIONS AND MATERIALS. VERIFY ALL DIMENSIONS AND MATERIALS.

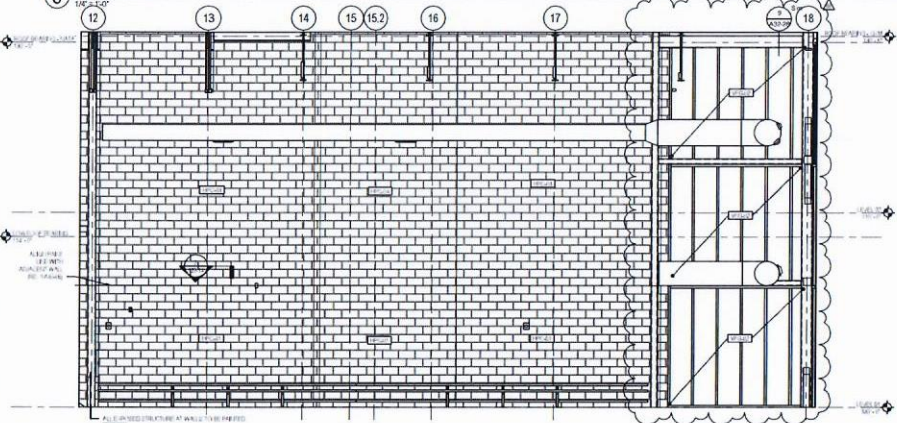
INTERIOR ELEVATION LEGEND



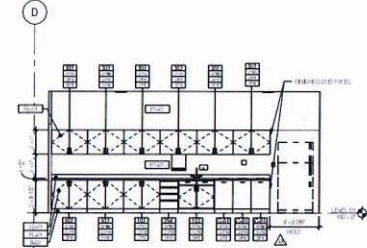
- Visible Mold Growth
- No Visible Mold Growth but Elevated Moisture
- No Visible Mold Growth and No Moisture
- ▨ Perform Drywall Removal Under Containment with Mold Remediation



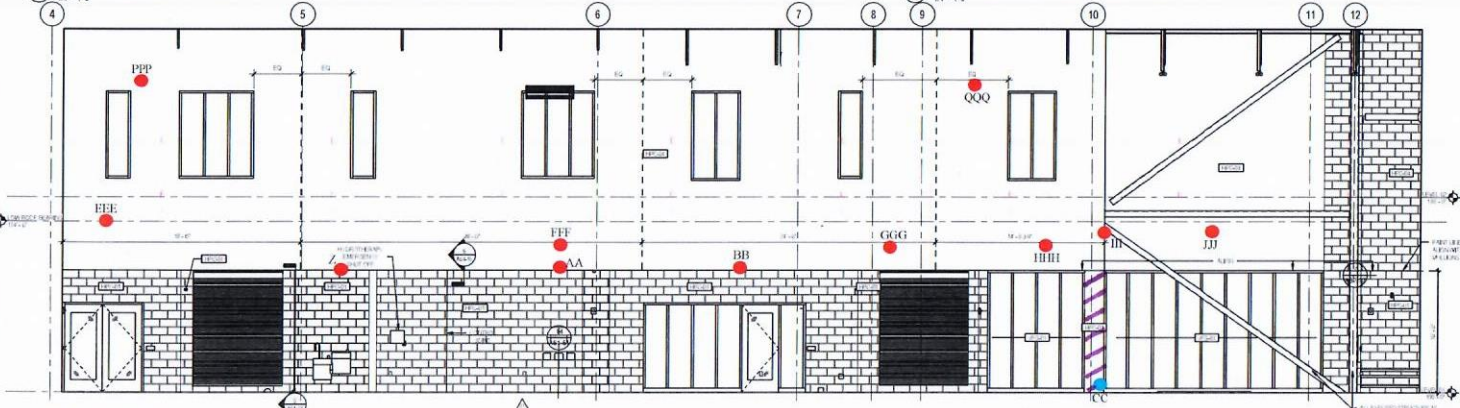
3 POOL - EAST  
1/4" = 1'-0"



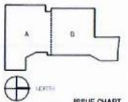
2 POOL - NORTH 2  
1/4" = 1'-0"



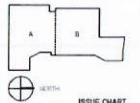
4 POOL PARTY - ELEVATION - WEST  
1/4" = 1'-0"



1 POOL - NORTH  
1/4" = 1'-0"



NO.	DESCRIPTION	DATE
1	ISSUED FOR PERMITS	03/15/24
2	ISSUED FOR PERMITS	03/15/24
3	ISSUED FOR PERMITS	03/15/24
4	ISSUED FOR PERMITS	03/15/24
5	ISSUED FOR PERMITS	03/15/24
6	ISSUED FOR PERMITS	03/15/24
7	ISSUED FOR PERMITS	03/15/24
8	ISSUED FOR PERMITS	03/15/24
9	ISSUED FOR PERMITS	03/15/24
10	ISSUED FOR PERMITS	03/15/24
11	ISSUED FOR PERMITS	03/15/24
12	ISSUED FOR PERMITS	03/15/24



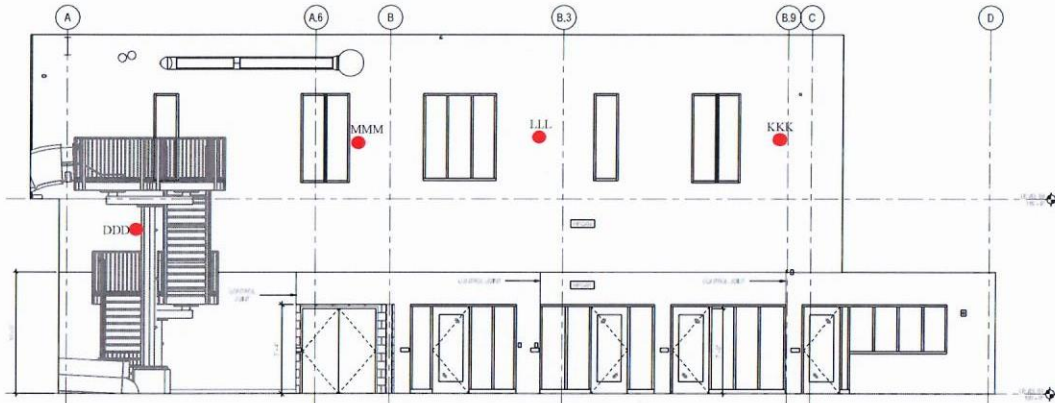
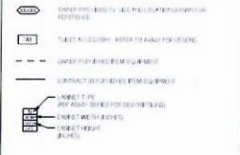
NO.	DATE	DESCRIPTION	BY	CHKD.
1	10/20/18	ISSUED FOR PERMITS	AW	AW
2	10/20/18	ISSUED FOR CONSTRUCTION	AW	AW
3	10/20/18	ISSUED FOR BIDDING	AW	AW
4	10/20/18	ISSUED FOR CONTRACT	AW	AW
5	10/20/18	ISSUED FOR AS-BUILT	AW	AW
6	10/20/18	ISSUED FOR ARCHIVE	AW	AW

Job Number: 201710.000  
 Drawn: AW  
 Checked: AW  
 Approved: AW  
 TITLE

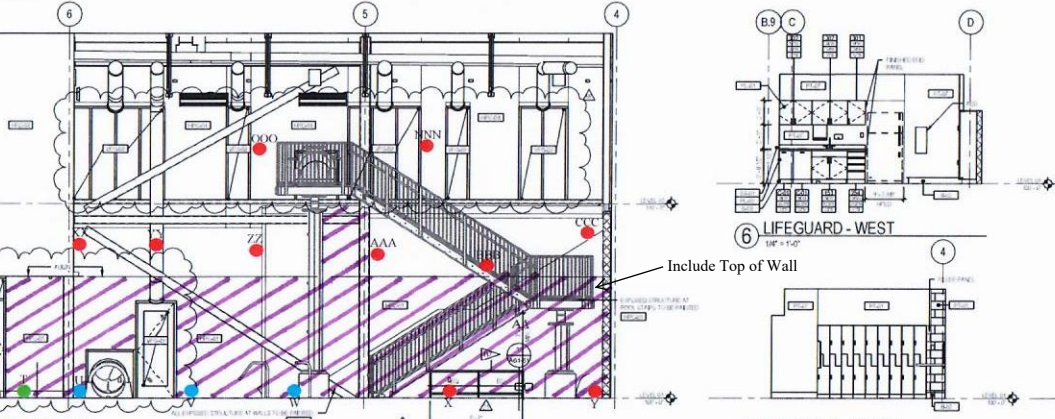
**INTERIOR ELEVATION  
GENERAL NOTES**

- SEE ELECTRICAL FOR SPECIFIC LIGHT FIXTURE TYPES AND LOCATIONS. SEE ELECTRICAL FOR SPECIFIC SWITCH AND DIMMER TYPES AND LOCATIONS.
- REFER TO GENERAL NOTES FOR SPECIFIC FINISHES AND MATERIALS. REFER TO GENERAL NOTES FOR SPECIFIC FINISHES AND MATERIALS.
- REFER TO ARCHITECTURAL NOTES FOR SPECIFIC FINISHES AND MATERIALS. REFER TO ARCHITECTURAL NOTES FOR SPECIFIC FINISHES AND MATERIALS.
- REFER TO ARCHITECTURAL NOTES FOR SPECIFIC FINISHES AND MATERIALS. REFER TO ARCHITECTURAL NOTES FOR SPECIFIC FINISHES AND MATERIALS.
- REFER TO ARCHITECTURAL NOTES FOR SPECIFIC FINISHES AND MATERIALS. REFER TO ARCHITECTURAL NOTES FOR SPECIFIC FINISHES AND MATERIALS.
- REFER TO ARCHITECTURAL NOTES FOR SPECIFIC FINISHES AND MATERIALS. REFER TO ARCHITECTURAL NOTES FOR SPECIFIC FINISHES AND MATERIALS.
- REFER TO ARCHITECTURAL NOTES FOR SPECIFIC FINISHES AND MATERIALS. REFER TO ARCHITECTURAL NOTES FOR SPECIFIC FINISHES AND MATERIALS.
- REFER TO ARCHITECTURAL NOTES FOR SPECIFIC FINISHES AND MATERIALS. REFER TO ARCHITECTURAL NOTES FOR SPECIFIC FINISHES AND MATERIALS.
- REFER TO ARCHITECTURAL NOTES FOR SPECIFIC FINISHES AND MATERIALS. REFER TO ARCHITECTURAL NOTES FOR SPECIFIC FINISHES AND MATERIALS.
- REFER TO ARCHITECTURAL NOTES FOR SPECIFIC FINISHES AND MATERIALS. REFER TO ARCHITECTURAL NOTES FOR SPECIFIC FINISHES AND MATERIALS.
- REFER TO ARCHITECTURAL NOTES FOR SPECIFIC FINISHES AND MATERIALS. REFER TO ARCHITECTURAL NOTES FOR SPECIFIC FINISHES AND MATERIALS.
- REFER TO ARCHITECTURAL NOTES FOR SPECIFIC FINISHES AND MATERIALS. REFER TO ARCHITECTURAL NOTES FOR SPECIFIC FINISHES AND MATERIALS.
- REFER TO ARCHITECTURAL NOTES FOR SPECIFIC FINISHES AND MATERIALS. REFER TO ARCHITECTURAL NOTES FOR SPECIFIC FINISHES AND MATERIALS.
- REFER TO ARCHITECTURAL NOTES FOR SPECIFIC FINISHES AND MATERIALS. REFER TO ARCHITECTURAL NOTES FOR SPECIFIC FINISHES AND MATERIALS.
- REFER TO ARCHITECTURAL NOTES FOR SPECIFIC FINISHES AND MATERIALS. REFER TO ARCHITECTURAL NOTES FOR SPECIFIC FINISHES AND MATERIALS.

**INTERIOR ELEVATION LEGEND**



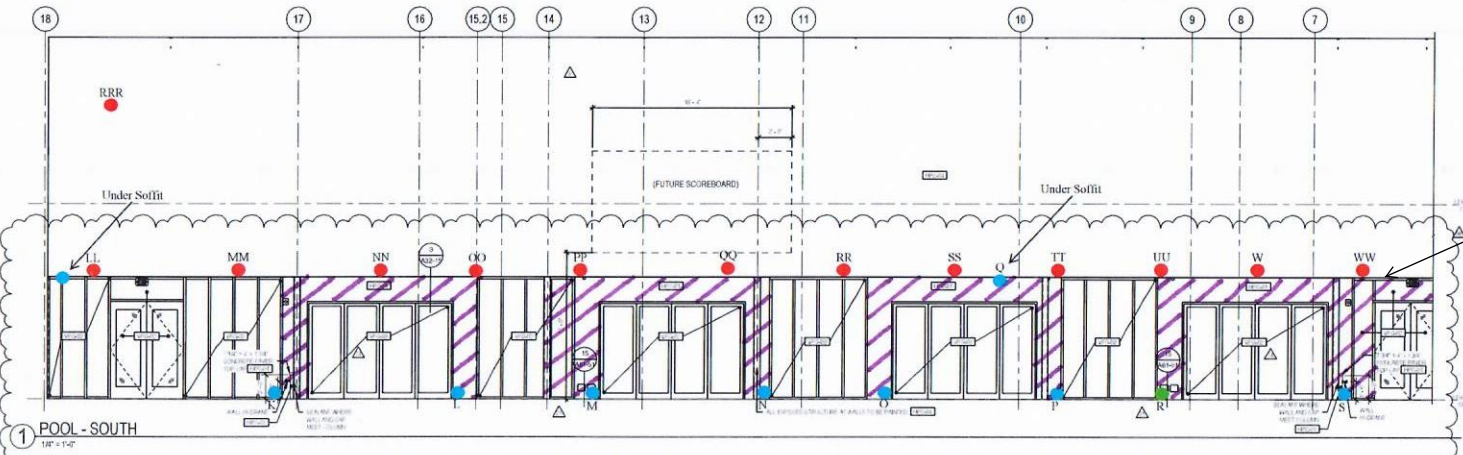
**3 POOL - WEST**  
1/8" = 1'-0"



**4 LIFEGUARD - WEST**  
1/8" = 1'-0"

**4 LIFEGUARD - NORTH**  
1/8" = 1'-0"

**5 LIFEGUARD - EAST**  
1/8" = 1'-0"



**1 POOL - SOUTH**  
1/8" = 1'-0"

- Visible Mold Growth
- No Visible Mold Growth but Elevated Moisture
- No Visible Mold Growth and No Moisture
- Perform Drywall Removal Under Containment with Mold Remediation

Include Top of Wall

Include Soffit on this Wall