



Town of Johnstown

Settler's Crossing

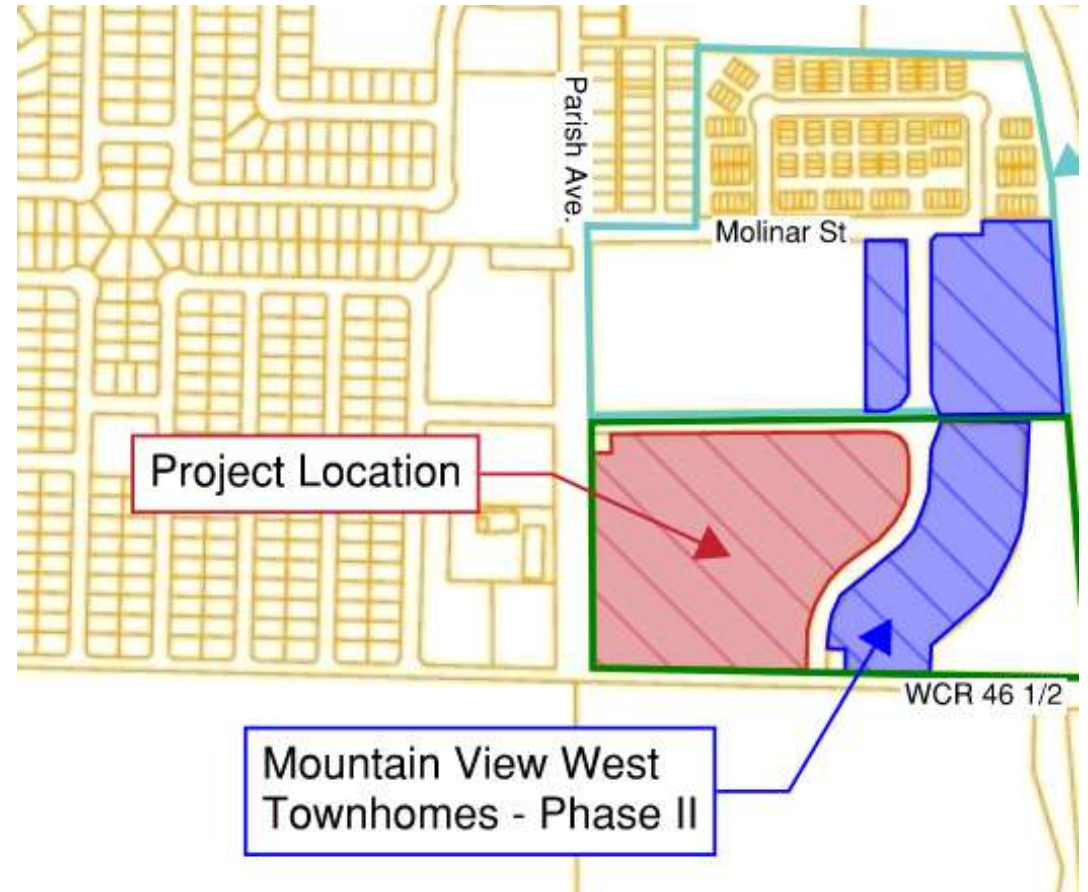
Preliminary/Final Subdivision Plat (SUB23-0003)

Planning and Zoning Commission Meeting

November 1, 2023

LOCATION & BACKGROUND

- General Location: East of Parish Ave & South of Settler's Way
 - Approx. 13.7 acres
- Previous Planning & Zoning Events
 - 2005- Johnstown Colony Annexation
 - 2017-Mountain View West PUD

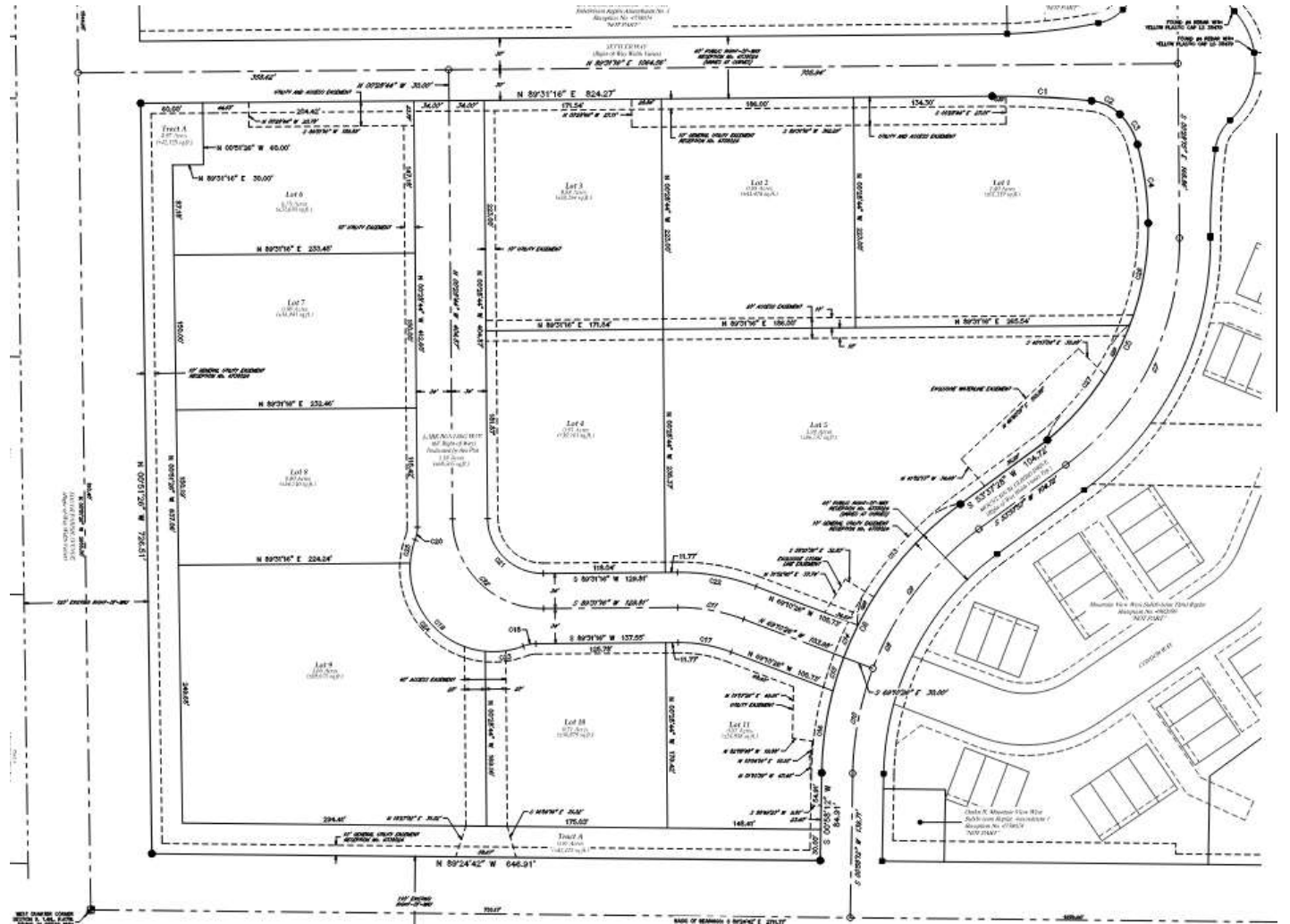


Town of Johnstown

johnstown.colorado.gov | 970-587-4664

Development & Subdivision

- 11 commercial lots
- Access Easement has been approved for lots 10 & 8 from CR 46.5
- Part of the Mountain View West Development



STAFF ANALYSIS & RECOMMENDATION

- Conforms to the Mountain View West Land Use Plan along with the Town's codes & compliances
- Recommendation for Approval