



*Town of Johnstown*

# ARCHDIOCESE ANNEXATION NOS. 1-3 - ZONING

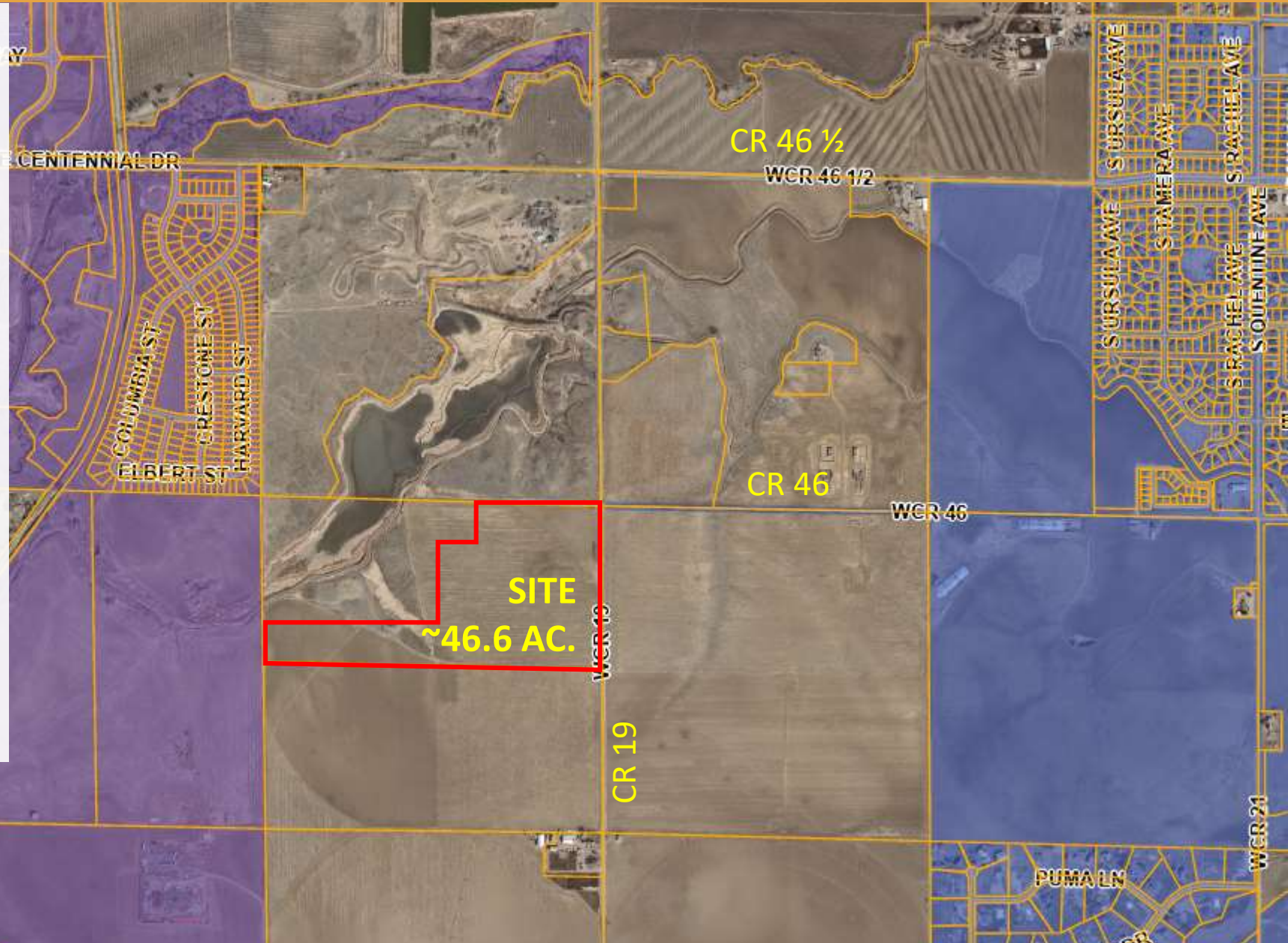
ESTABLISHMENT OF ZONING

TOWN COUNCIL

April 17, 2023

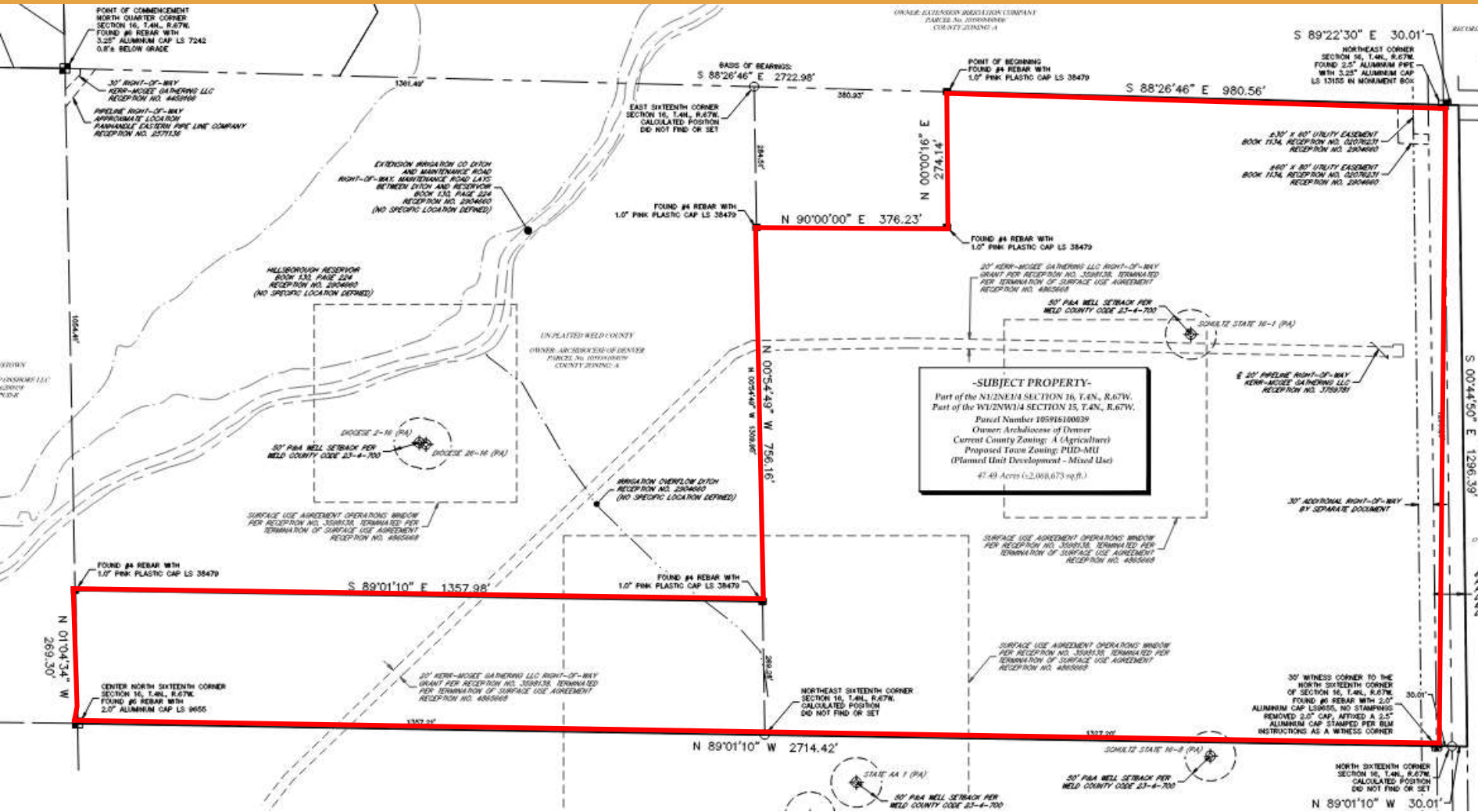
# VICINITY MAP

- West of CR 19 – 0.5 mile south of CR 46 ½
- Approx. 46.6 Acres
- Current in Weld County: Zoned A (Agricultural)
- Hillsborough Ditch & Little Thompson Reservoir to NW (excluded)





# ZONING MAP



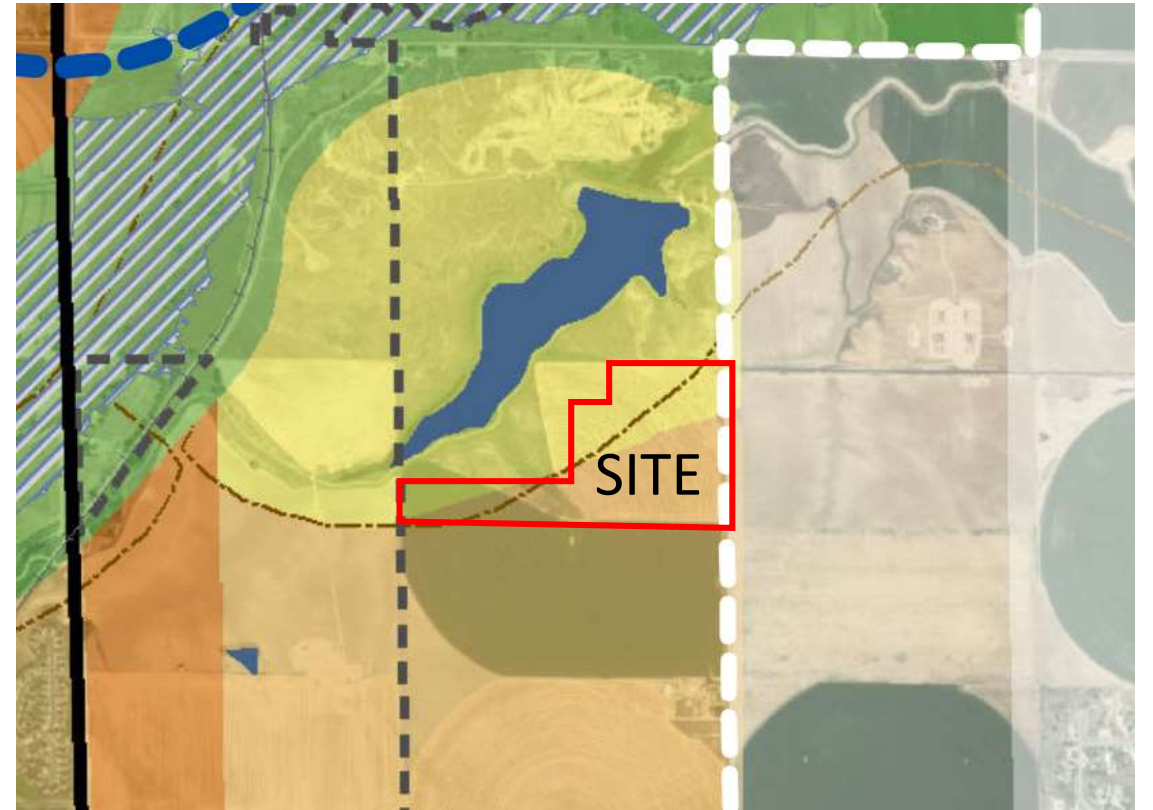
- Accompanying:
- Outline Development Plan & Use by Special Review
  - Sporadic oil and gas



Town of Johnstown  
johnstown.colorado.gov | 970-587-4664

# ANALYSIS & RECOMMENDATION

- Johnstown Review Committee (JRC) included Town staff, Weld County, Milliken, LTWD
- Zoning will permit continued ag use as well as ODP for Solar as an interim use.
- PZC recommends Approval



*Low intensity uses (ag & solar) are in alignment with the Johnstown Area Comprehensive Plan*