



Town of Johnstown

ARCHDIOCESE ANNEXATION NOS. 1-3

Annexation
TOWN COUNCIL
April 17, 2023

Y

CENTENNIAL DR

COLUMBIA ST

CRESTONE ST

HARVARD ST

ELBERT ST

CR 46 1/2

WCR 46 1/2

CR 46

WCR 46

SITE
~46.6 AC.

WCR 19

CR 19

CR 21

WCR 21

PUMA LN

S URSULA AVE

S TAMERA AVE

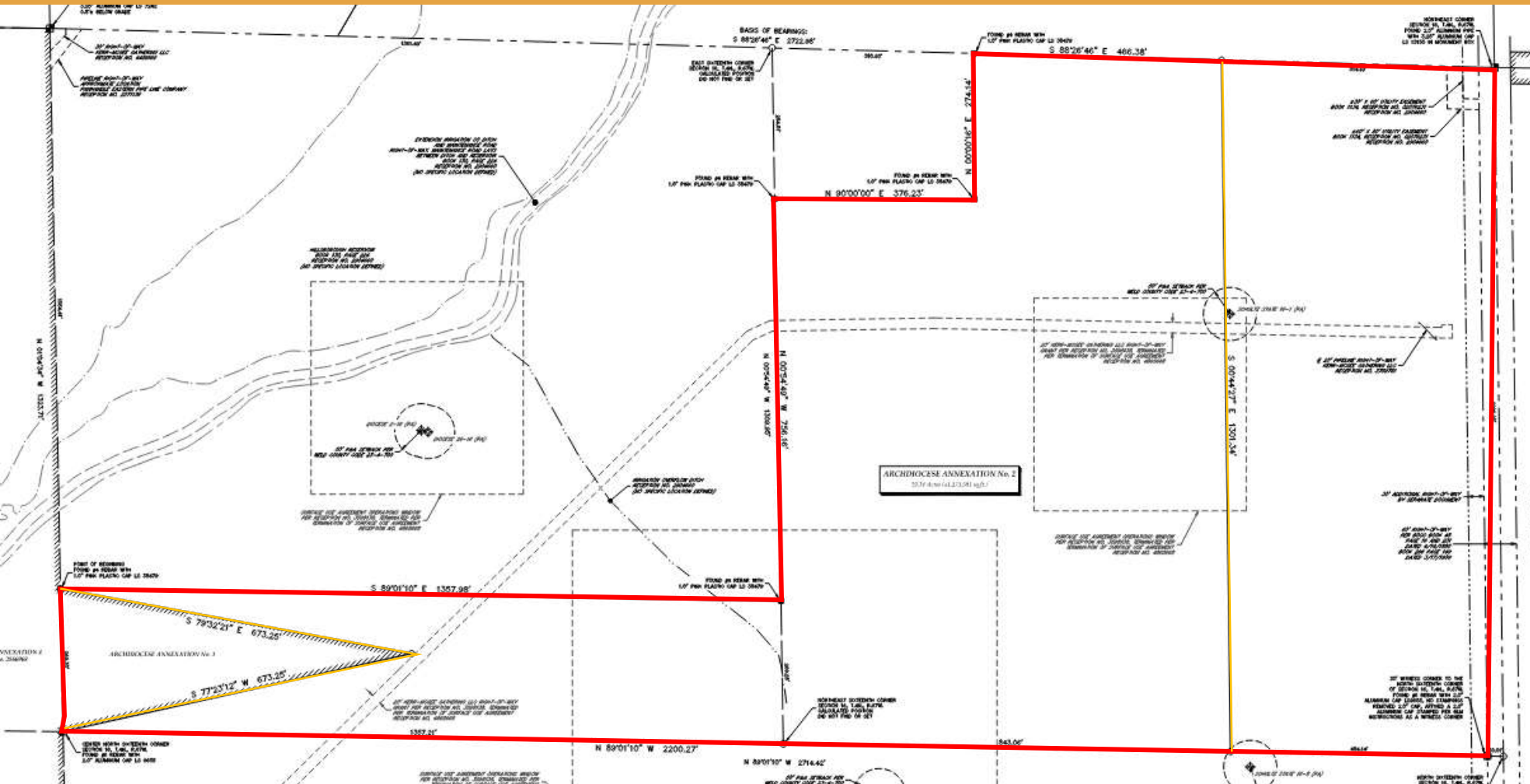
S RACHEL AVE

S QUENTINE AVE

- f CR 19 – 0.5 mile
f CR 46 ½
. 46.6 Acres
t in Weld County:
(Agricultural)
rough Ditch &
ompson Reservoir
(excluded)



ANNEXATION MAP NOS. 1-3



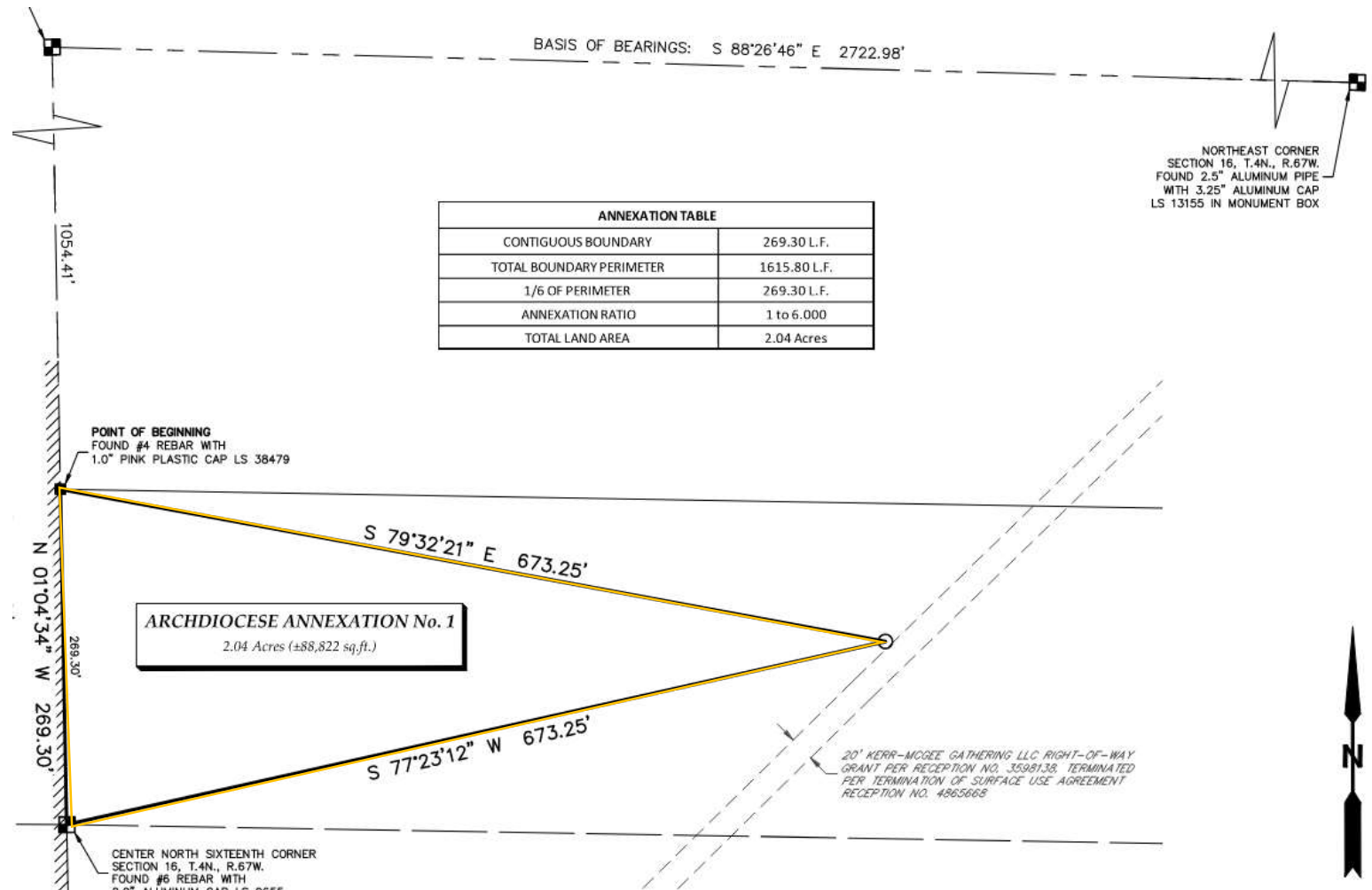
- Has required 1/6 min. Contiguity, per C.R.S.
- No Platting required at this time.
- CR 19 Right of Way to be dedicated as part of proposed Annexation Agreement



Town of Johnstown
johnstown.colorado.gov | 970-587-4664

ANNEXATION MAP NO. 1

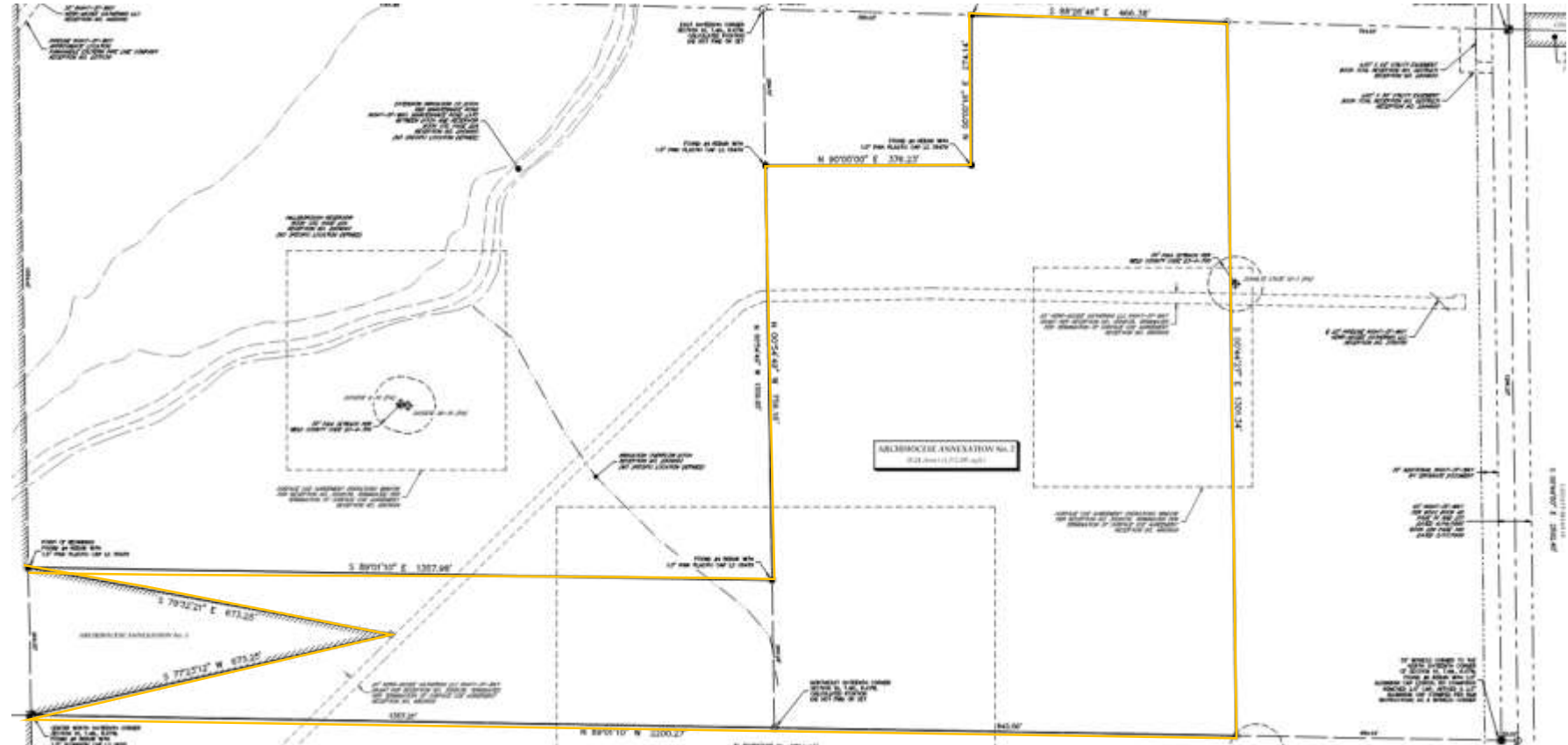
- 2.04 acres
- Connects to Red Mountain Annexation No. 4 to the west.



Town of Johnstown
johnstown.colorado.gov | 970-587-4664

ANNEXATION MAP NO. 2

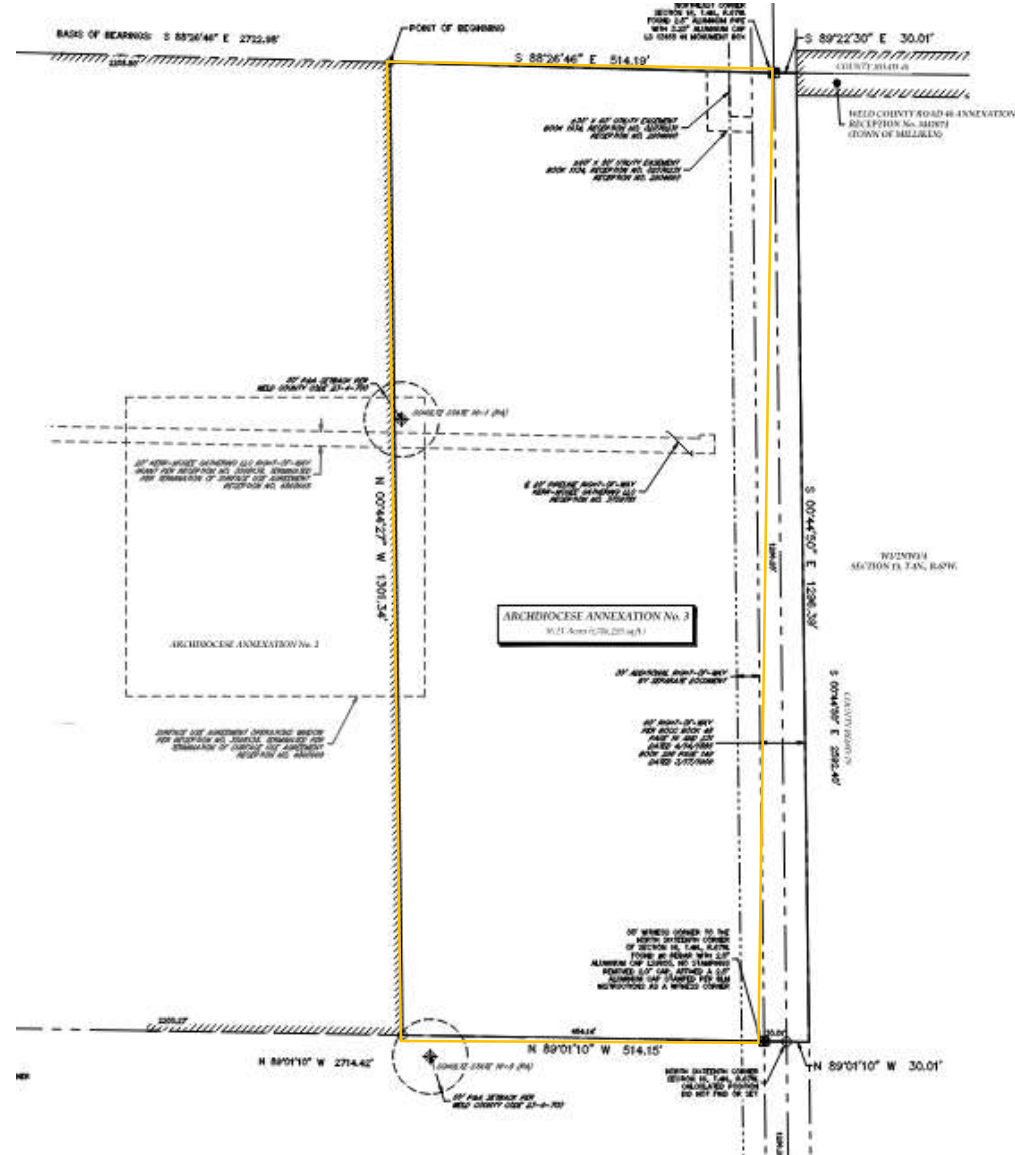
- 29.24 acres
- Connects to Archdiocese Annexation No. 1 to the west.



Town of Johnstown
johnstown.colorado.gov | 970-587-4664

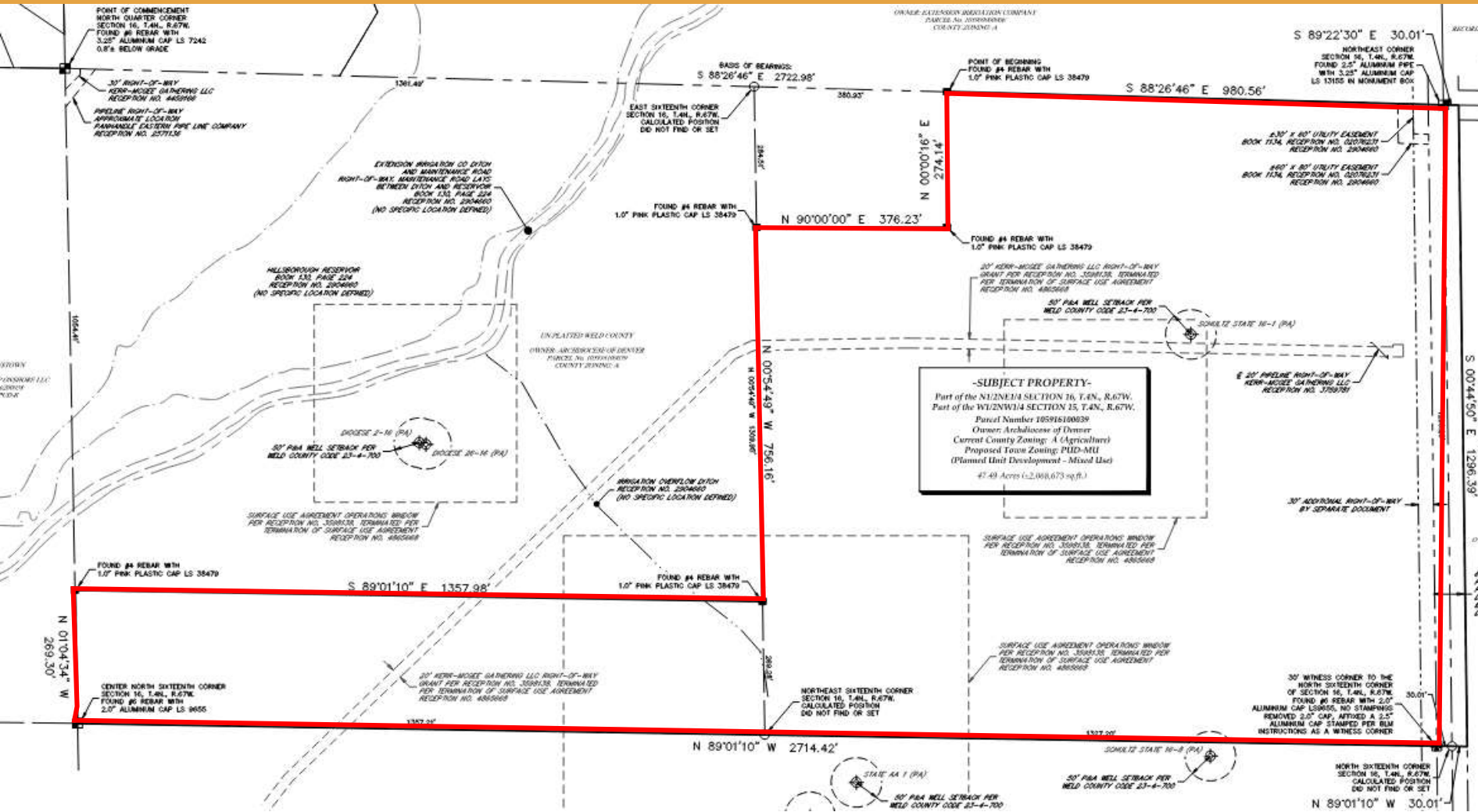
ANNEXATION MAP NO. 3

- 16.21 acres
- Connects to Archdiocese Annexation No. 2 to the west.



Town of Johnstown
johnstown.colorado.gov | 970-587-4664

ASSOCIATED PROJECTS



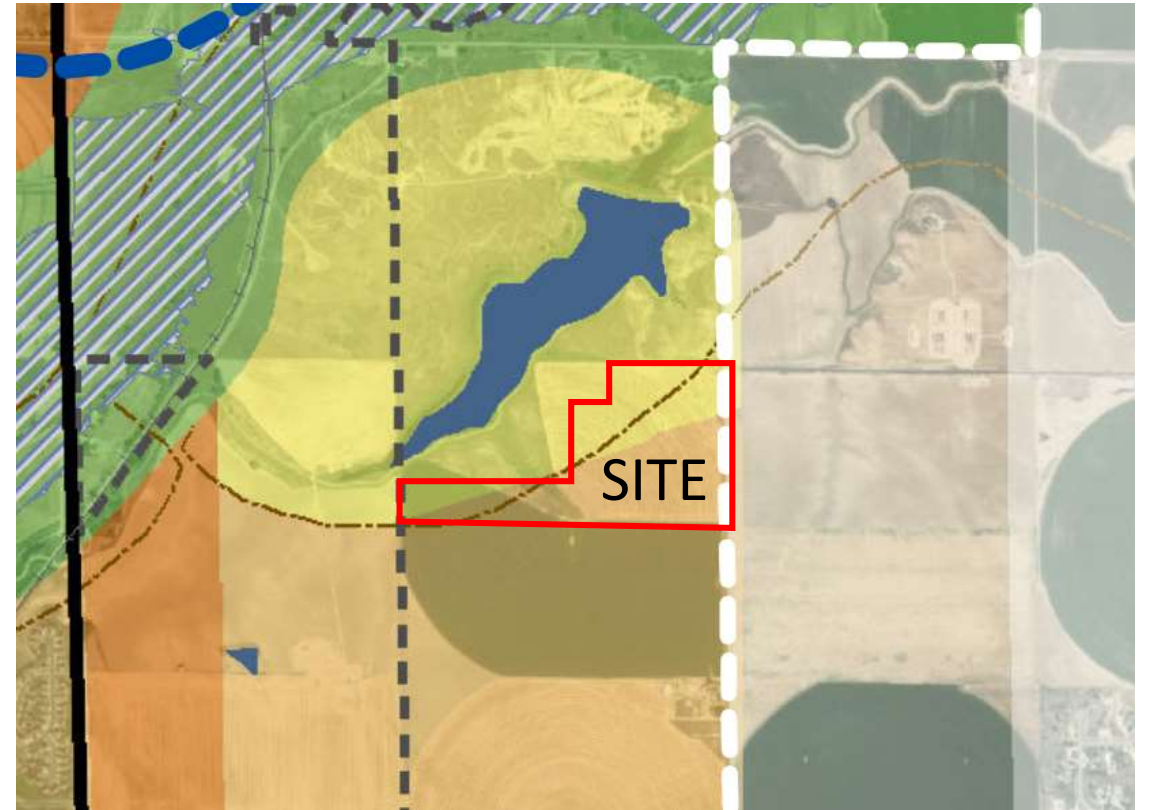
- Accompanying:
- Zoning to PUD-MU
 - Outline Development Plan
 - Use by Special Review
 - Sporadic oil and gas



Town of Johnstown
johnstown.colorado.gov | 970-587-4664

ANALYSIS & RECOMMENDATION

- Johnstown Review Committee (JRC) included Town staff, Weld County, Milliken, LTWD
- Annexation areas meet State statute requirements and falls within the Johnstown GMA.
- PZC recommends Approval



Low intensity uses (ag & solar) are in alignment with the Johnstown Area Comprehensive Plan