



Town of Johnstown

ARCHDIOCESE ANNEXATION NOS. 1 & 2

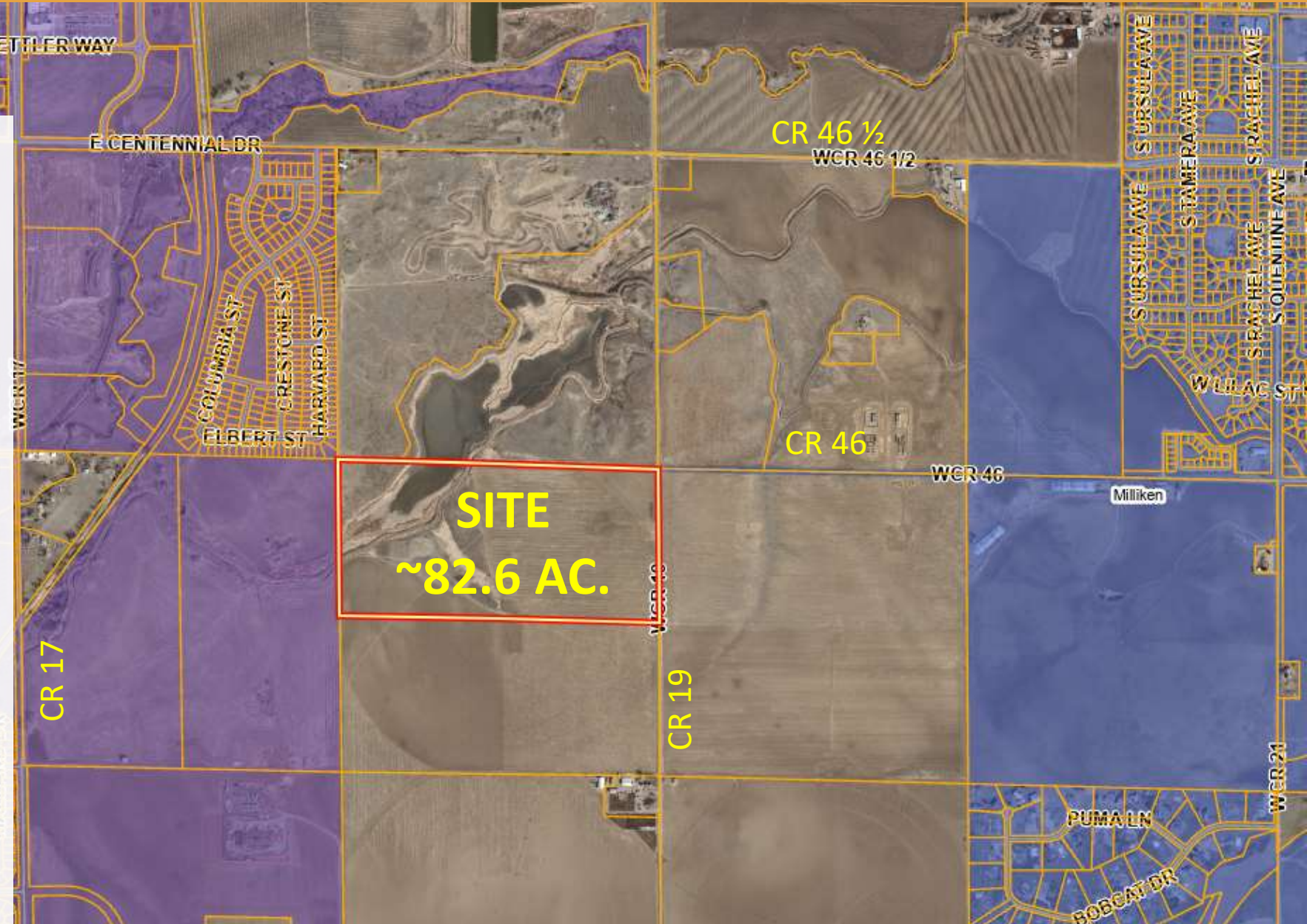
ESTABLISHMENT OF ZONING

TOWN COUNCIL

April 3, 2023

VICINITY MAP

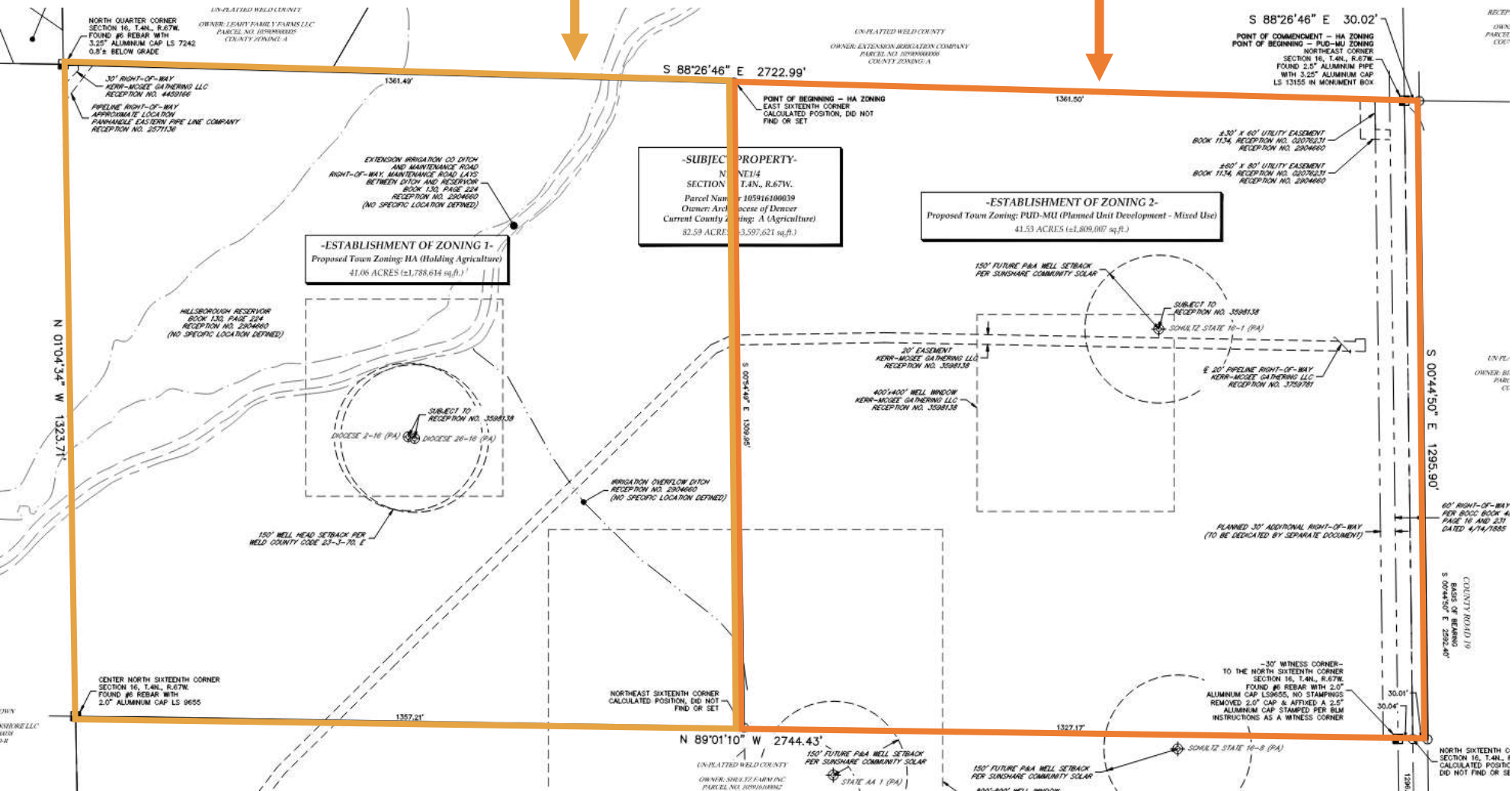
- West of CR 19 – 0.5 mile south of CR 46 ½
- Approx. 82.6 Acres (2 proposed halves E - W)
- Current in Weld County: Zoned A (Agricultural)
- Hillsborough Ditch & Little Thompson Reservoir in NW



ZONING MAP

• Requested EOZ Zoning area 1 (west half)
H-A (Holding Agriculture)

• Requested EOZ Zoning area 2 (east half)
PUD-MU (Planned Unit Development - Mixed Use)

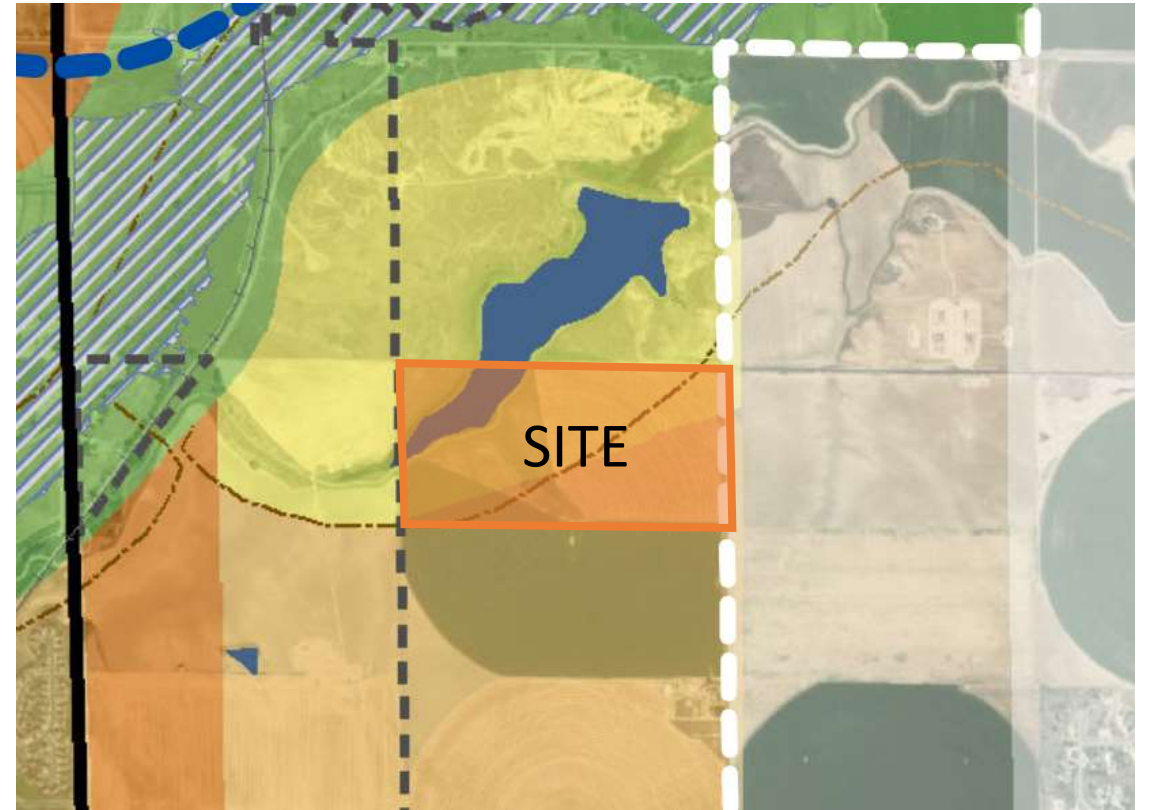


• Accompanying Outline Development Plan and Use by Special Review

• Sporadic oil & gas facilities - plugged and abandoned wells

ANALYSIS & RECOMMENDATION

- Johnstown Review Committee (JRC) included Town staff, Weld County, Milliken, LTWD
- Zoning will permit continued ag use as well as ODP for Solar as an interim use.
- PZC recommends Approval



Low intensity uses (ag & solar) are in alignment with the Johnstown Area Comprehensive Plan



Town of Johnstown

johnstown.colorado.gov | 970-587-4664