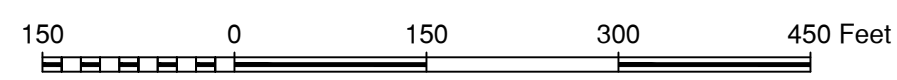
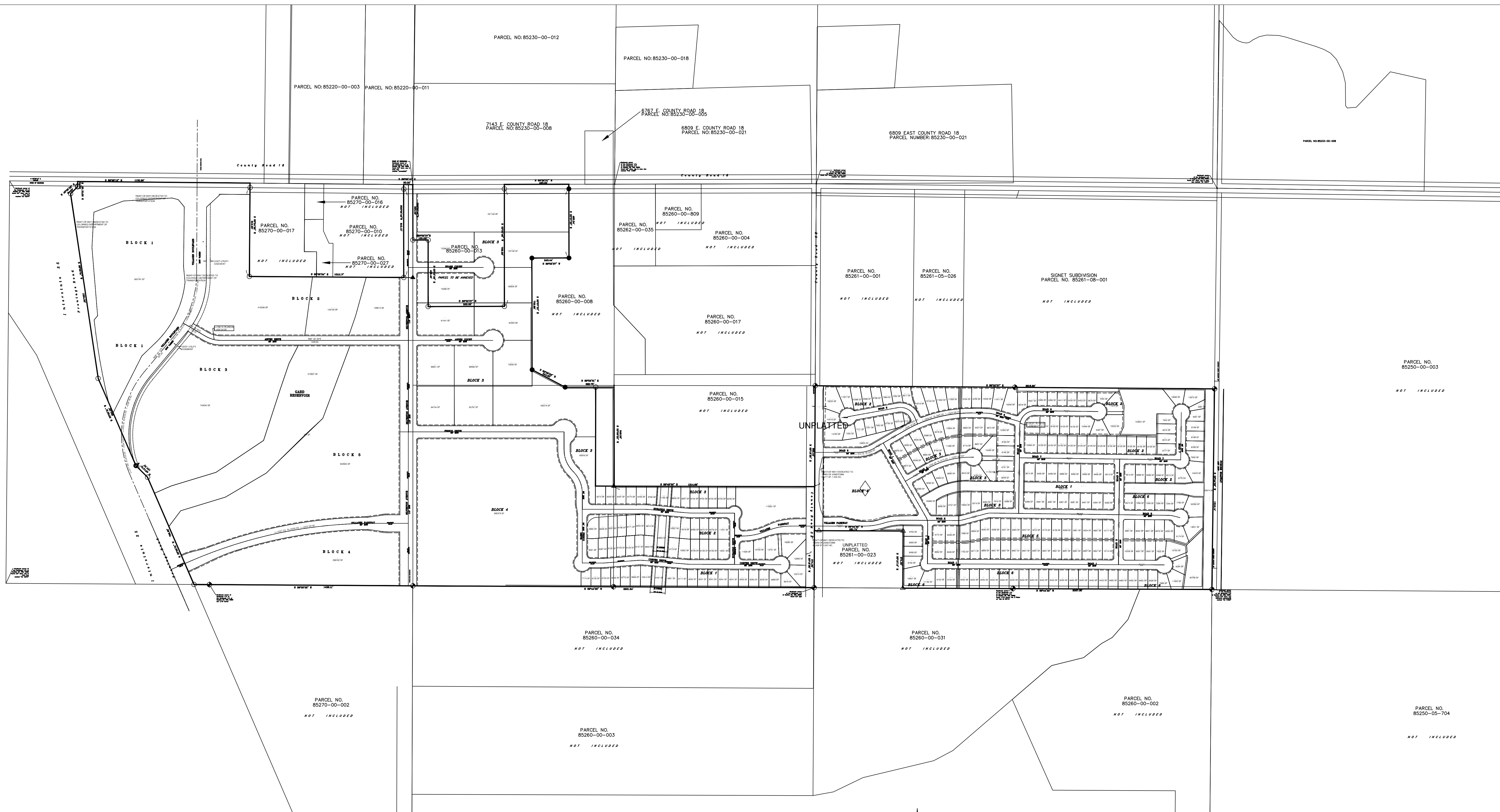


# THE VILLAGES AT JOHNSTOWN

## PRELIMINARY PLAT AMENDMENT NO. 1

A PORTION OF THE NORTHEAST 1/4 OF SECTION 27 AND A PORTION OF THE NORTH 1/2 OF SECTION 26, TOWNSHIP 05 NORTH, RANGE 68 WEST 6th PRINCIPAL MERIDIAN, TOWN OF JOHNSTOWN, COUNTY OF LARIMER, STATE OF COLORADO.



SCALE: 1" = 150'

**HL** **HIGHLINE**  
**ENGINEERING & SURVEYING**

ENGINEERING CONSULTANTS

PO BOX 1295  
PARKER, COLORADO 80134  
Tel. No.(303) 889-0044  
Fax: No(303) 380-3320

JOB NO. 229PLAT2

DATE: 7/05/18

SHEET 1 OF 1