



*Town of Johnstown*

# ARCHDIOCESE ANNEXATION NOS. 1 & 2

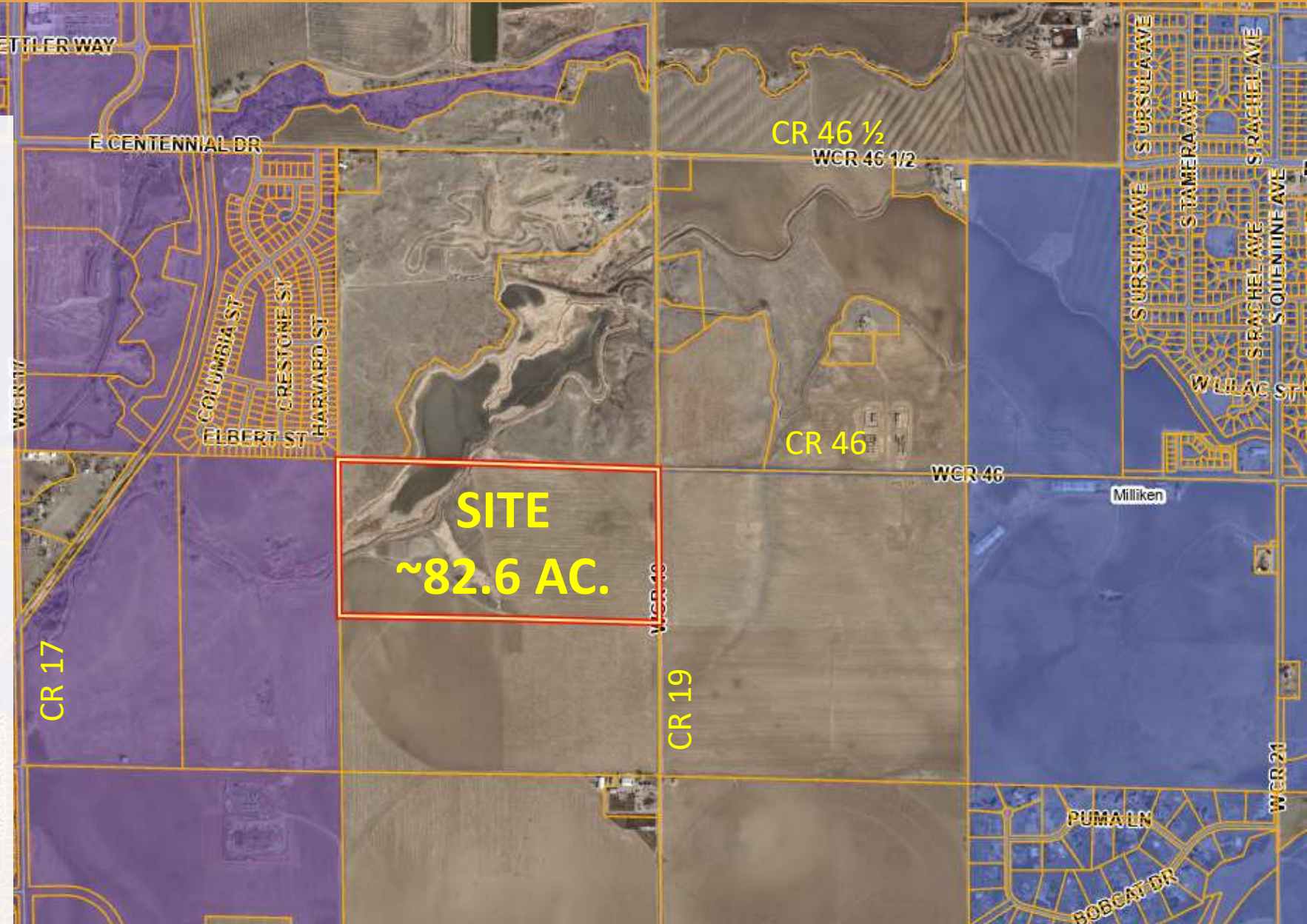
ESTABLISHMENT OF ZONING

TOWN COUNCIL

March 20, 2023

# VICINITY MAP

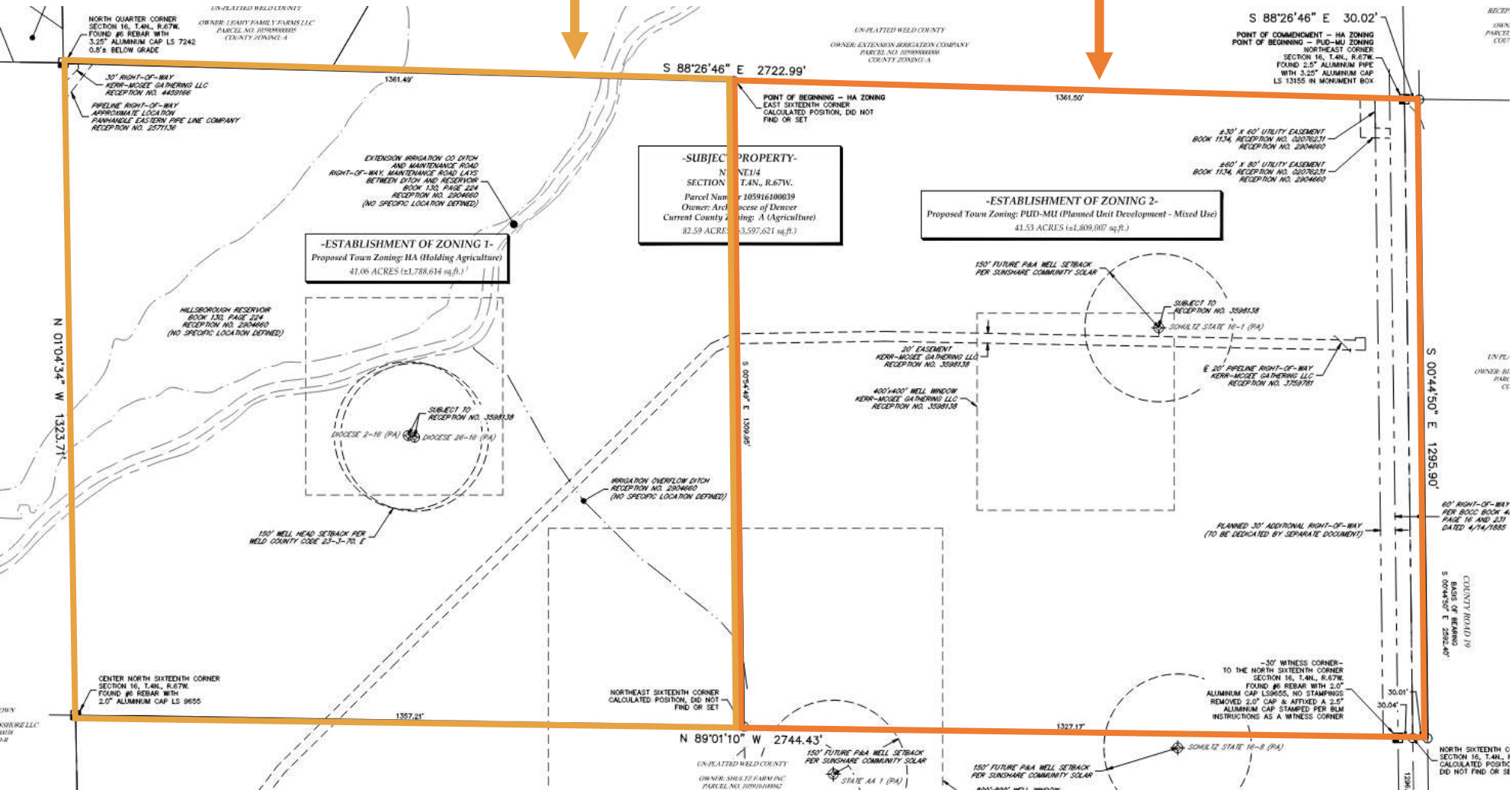
- West of CR 19 – 0.5 mile south of CR 46 ½
- Approx. 82.6 Acres (2 proposed halves E - W)
- Current in Weld County: Zoned A (Agricultural)
- Hillsborough Ditch & Little Thompson Reservoir in NW



# ZONING MAP

• Requested EOZ Zoning area 1 (west half)  
H-A (Holding Agriculture)

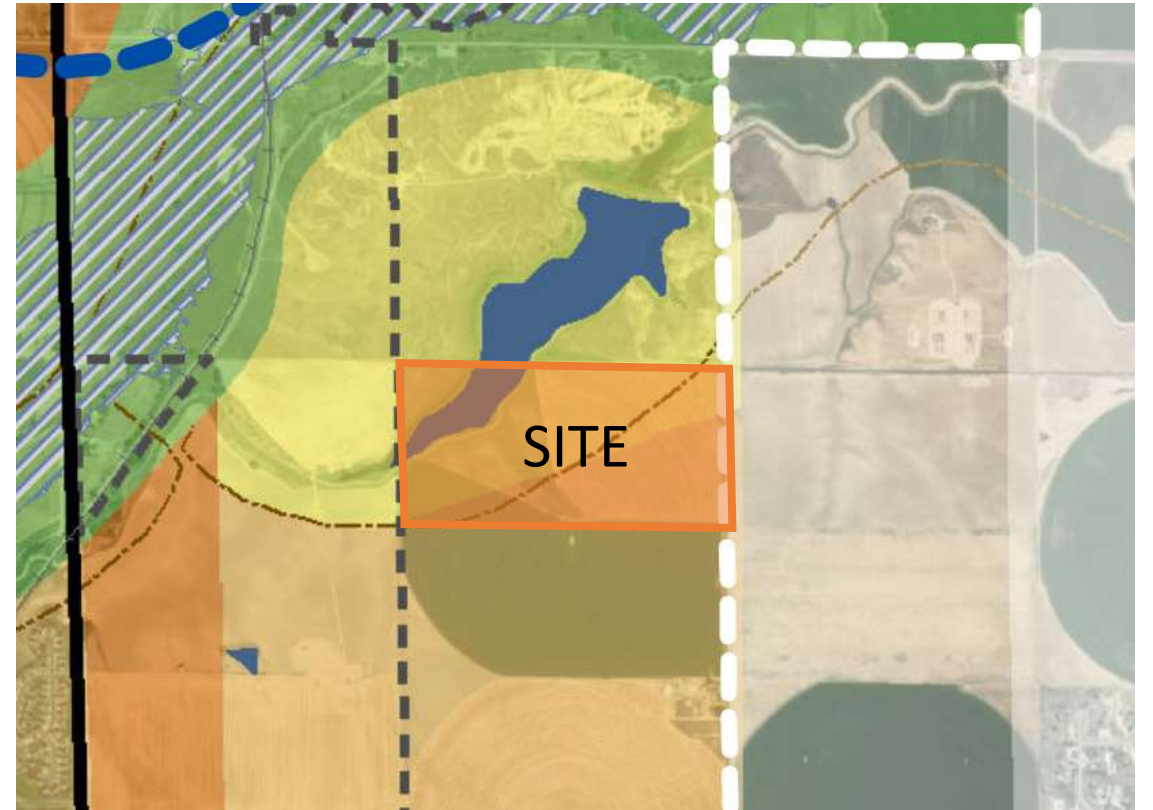
• Requested EOZ Zoning area 2 (east half)  
PUD-MU (Planned Unit Development - Mixed Use)



- Accompanying Outline Development Plan and Use by Special Review
- Sporadic oil & gas facilities - plugged and abandoned wells

# ANALYSIS & RECOMMENDATION

- Johnstown Review Committee (JRC) included Town staff, Weld County, Milliken, LTWD
- Zoning will permit continued ag use as well as ODP for Solar as an interim use.
- PZC recommends Approval



*Low intensity uses (ag & solar) are in alignment with the Johnstown Area Comprehensive Plan*



Town of Johnstown

johnstown.colorado.gov | 970-587-4664