



Town of Johnstown

RIEDER FARM ANNEXATION

Town Council
January 18, 2023

VICINITY MAP

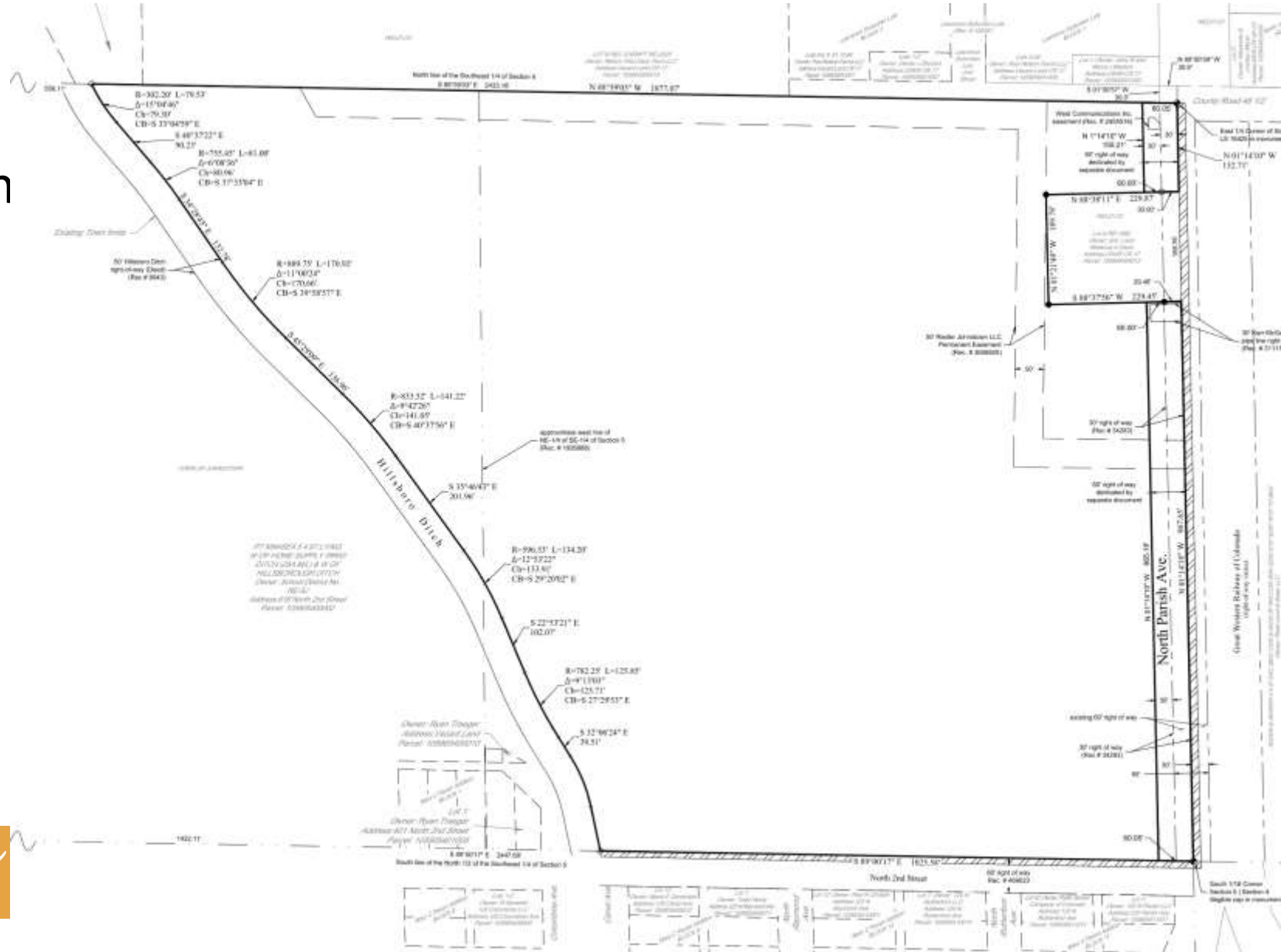
- Approx. 40 Acres
- West of Parish Ave, North of 2nd St.
- Weld County – A – Agriculture
- Hillsborough Ditch on West Boundary
- Roosevelt HS along Western edge



Town of Johnstown
johnstown.colorado.gov | 970-587-4664

ANNEXATION MAP

- Owner-initiated
- Within Johnstown Growth Management Area
- Has required 1/6 min. Contiguity, per C.R.S.
- Annexing adjacent ROW



Town of Johnstown
johnstown.colorado.gov | 970-587-4664