



Town of Johnstown

RIEDER FARM ANNEXATION – ESTABLISHMENT OF ZONING

Town Council
January 18, 2023

VICINITY MAP

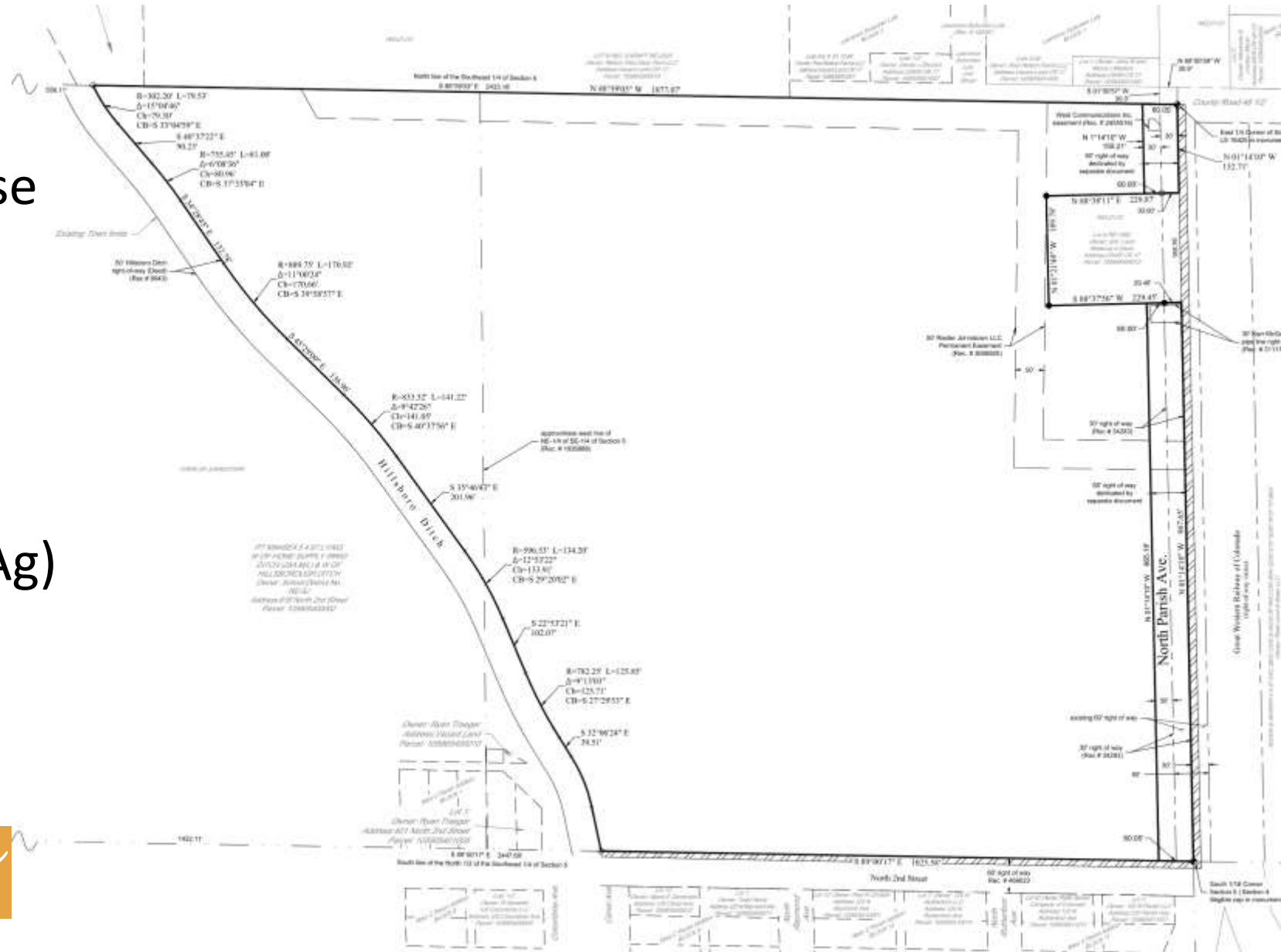
- West of Parish Ave,
North of 2nd St.
- Approx. 40.9 Acres
- Weld County – A –
Agriculture
- Hillsborough Ditch on
West



Town of Johnstown
johnstown.colorado.gov | 970-587-4664

ZONING MAP

- H-A Proposed
- Will continue agriculture use
- South – SF-1 Single Family
- West – SF-1 (Roosevelt HS)
- North – Weld County “A” (Ag)
- East – H-A undeveloped ag



Town of Johnstown
johnstown.colorado.gov | 970-587-4664