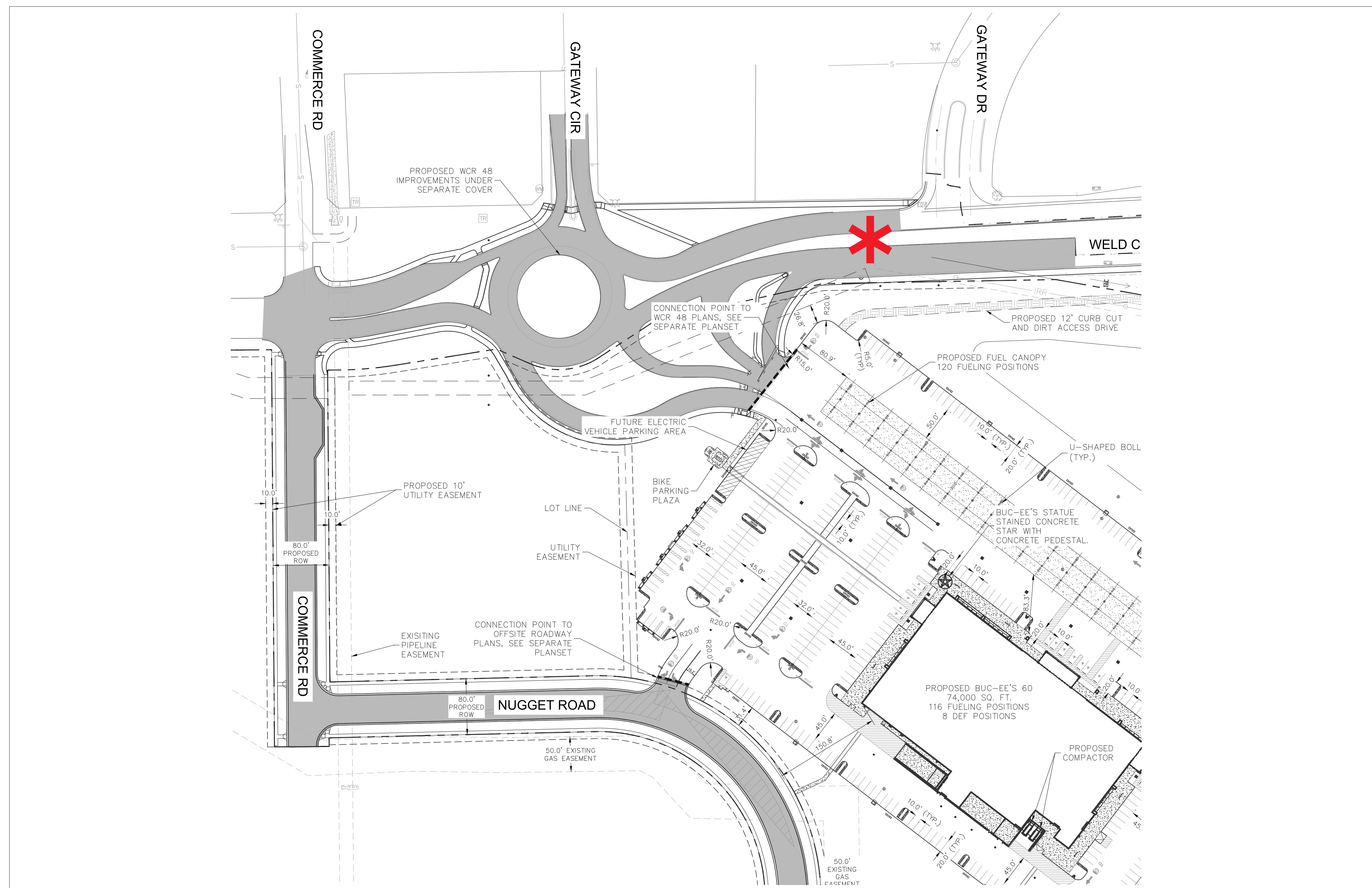




BUC-EE'S

Buc-ee's WCR 48 & Interstate 25 Johnstown, CO



This rendering is the property of Southwest Signs, Inc. It is for the exclusive use of Southwest Signs, Inc. and the party for which it was intended, the requestor. It is an unpublished original drawing not to be distributed, reproduced or exhibited without the explicit consent of Southwest Signs, Inc. Please contact your Account Manager for questions regarding this statement.

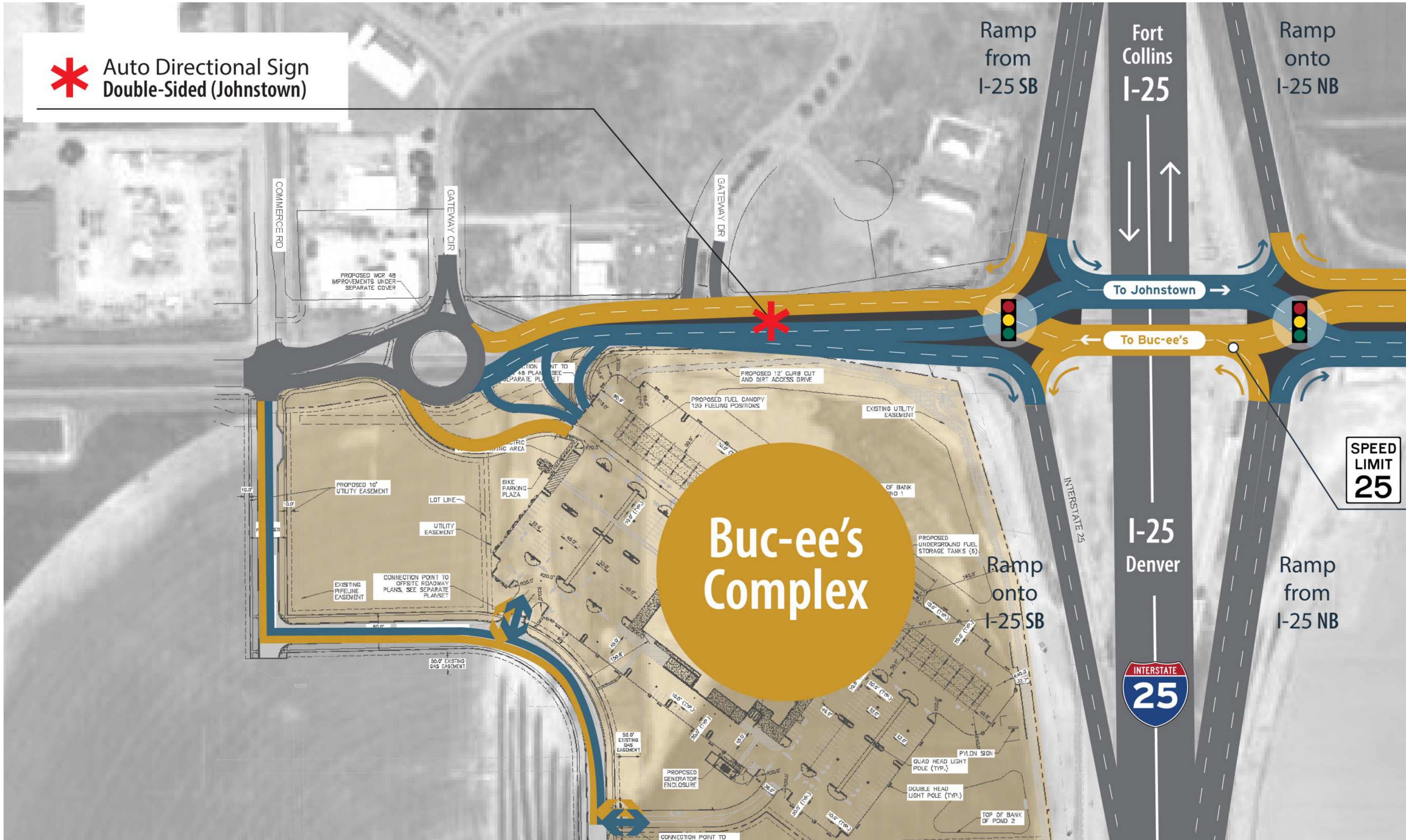
Buc-ee's
WCR 48 & Interstate 25.
Johnstown, CO

Project ID#: 128135
Project Mgr: Brenda A.
Designer: Josh D.
Created on: 07/12/2021

REVISION	DESCRIPTION	DATE	BY
R21	Revised interior letters to 28" at 200% spacing	08/24/23	JR
R22	Revised pylon logo to 20' city cabinet to 4'-6"x20' / update permit date	09/06/23	JR
R23	Added Coming Soon banner wrap for pylon city name cabinet	11/15/23	JR
R24	Added wayfinding directional sign	11/28/23	JR
R25	Revised directional sign logo to cast alum. plaque / add arch eng drwgs	11/29/23	JR
R26	Updated brick base / copy on panels /remove rest area copy	01/10/25	JR

01 SITE PLAN

*** Auto Directional Sign
Double-Sided (Johnstown)**



SIGNAGE LOCATION



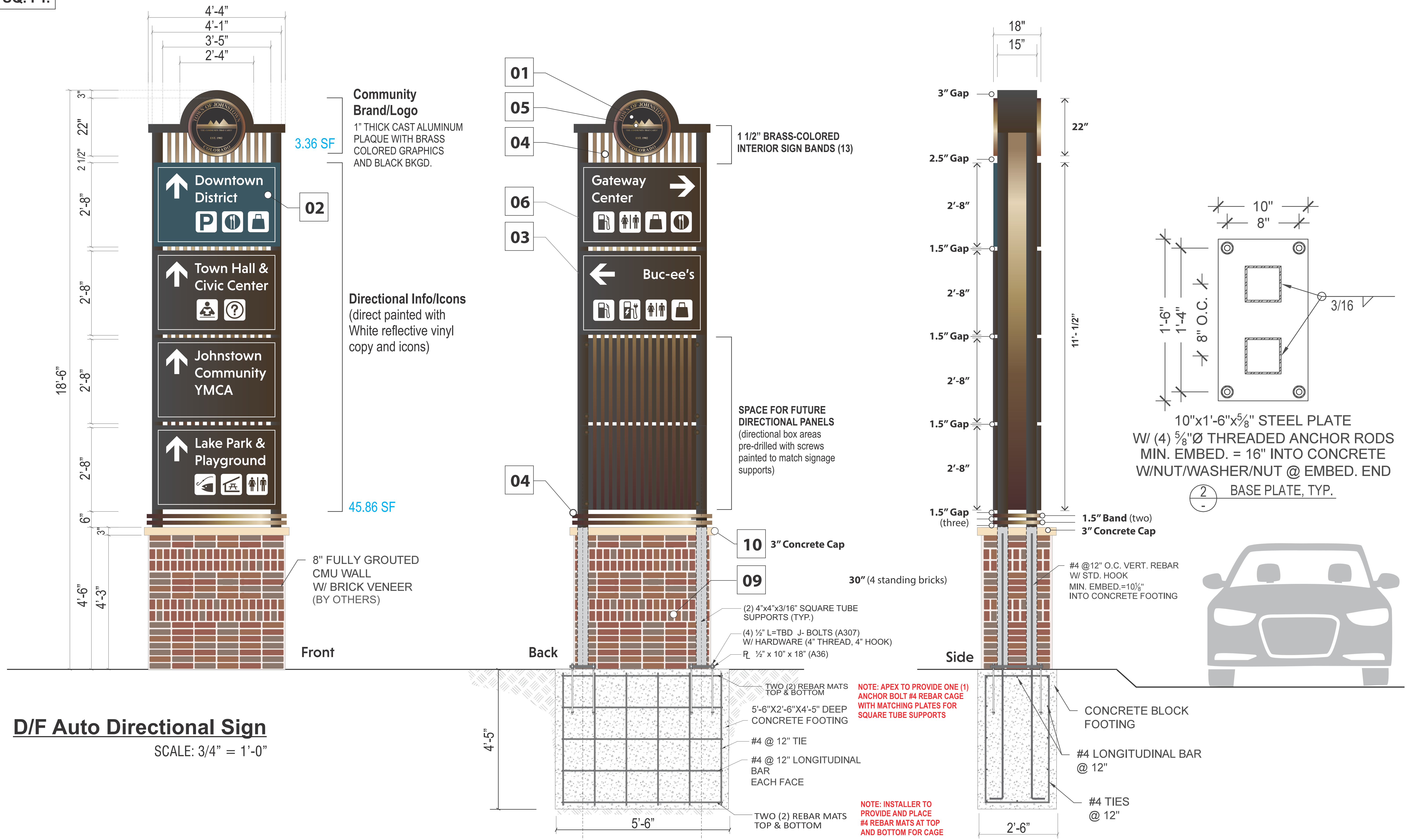
This rendering is the property of Southwest Signs, Inc. It is for the exclusive use of Southwest Signs, Inc. and the party for which it was intended, the requestor. It is an unpublished original drawing not to be distributed, reproduced or exhibited without the explicit consent of Southwest Signs, Inc. Please contact your Account Manager for questions regarding this statement.

Buc-ee's
WCR 48 & Interstate 25.
Johnstown, CO

Project ID#: **128135**
Project Mgr: Brenda A.
Designer: Josh D.
Created on: 07/12/2021

REVISION

R21 08/24/23	JR - Revised interior letters to 28" at 200% spacing
R22 09/06/23	JR - Revised pylon logo to 20' city cabinet to 4'-6"x20' / update per 01 SIGN LOCATION
R23 11/15/23	JR - Added Coming Soon banner wrap for pylon city name cabinet
R24 11/28/23	JR - Added wayfinding directional sign
R25 11/29/23	JR - Revised directional sign logo to cast alum. plaque / add arch eng drwgs
R26 01/10/25	JR - Updated brick base / copy on panels /remove rest area copy



D/F Auto Directional Sign
SCALE: 3/4" = 1'-0"

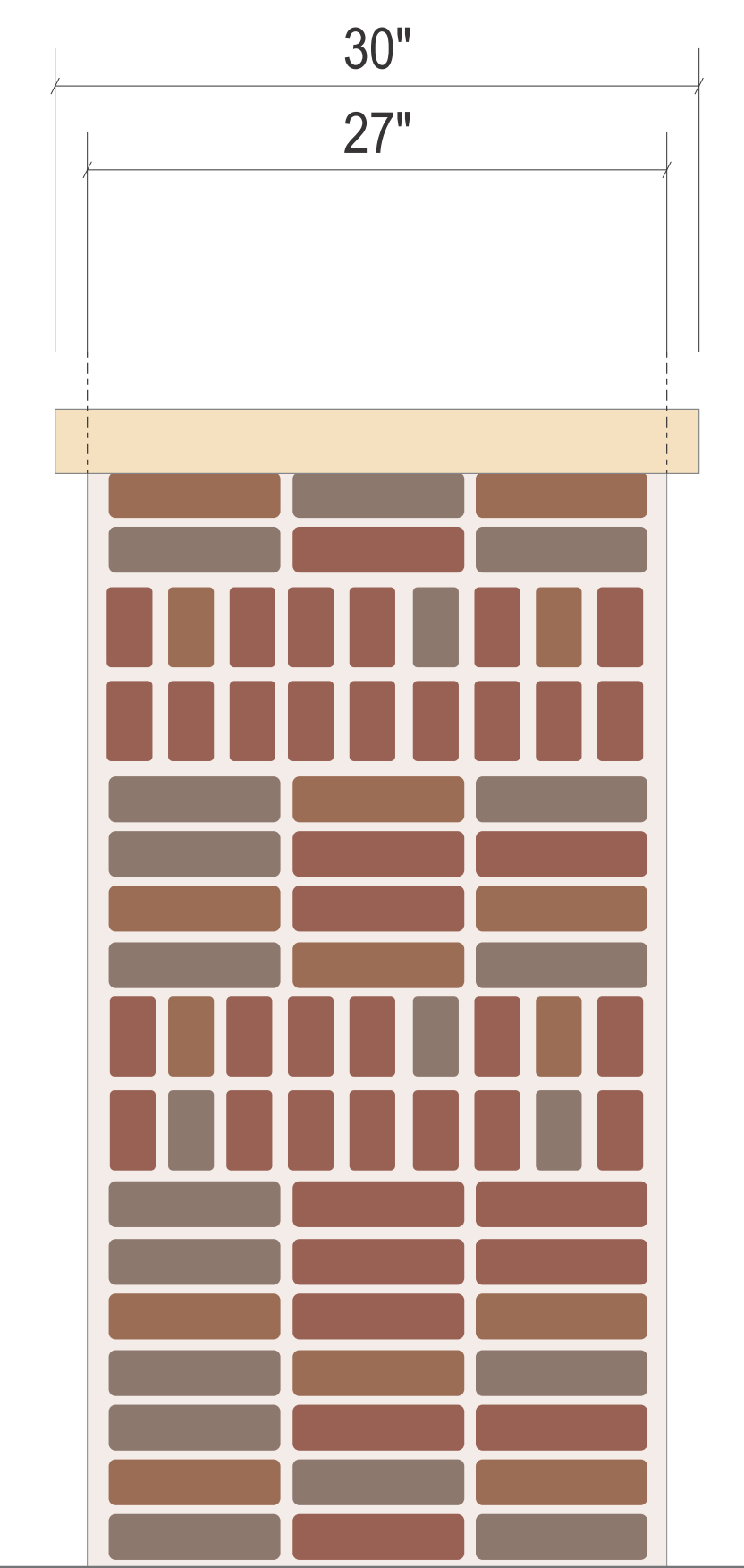
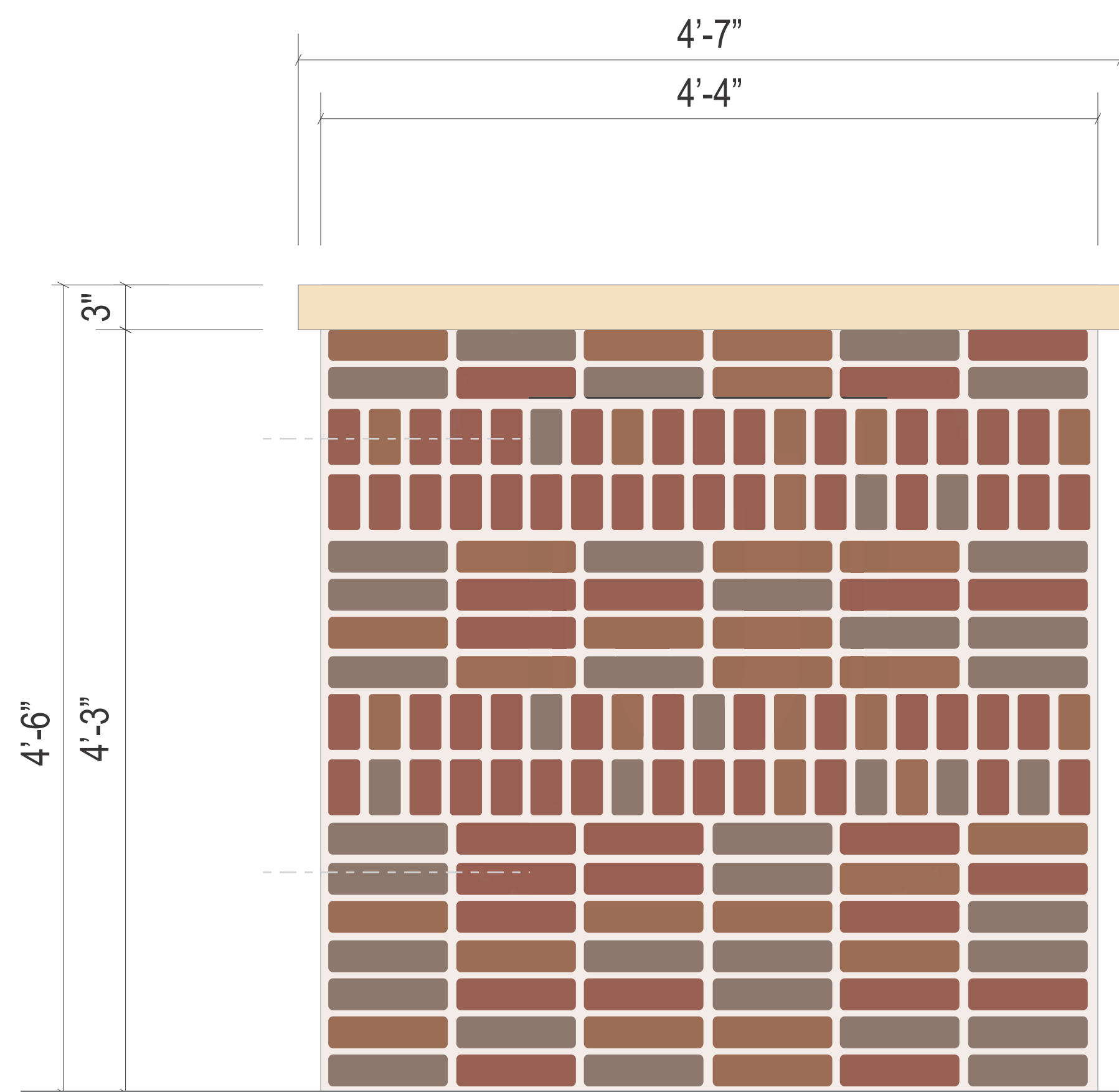


This rendering is the property of Southwest Signs, Inc. It is for the exclusive use of Southwest Signs, Inc. and the party for which it was intended, the requestor. It is an unpublished original drawing not to be distributed, reproduced or exhibited without the explicit consent of Southwest Signs, Inc. Please contact your Account Manager for questions regarding this statement.

Buc-ee's
WCR 48 & Interstate 25.
Johnstown, CO

Project ID#: 128135
Project Mgr: Brenda A.
Designer: Josh D.
Created on: 07/12/2021

REVISION	DATE	DESCRIPTION
R21	08/24/23	JR - Revised interior letters to 28" at 200% spacing
R22	09/06/23	JR - Revised pylon logo to 20' city cabinet to 4'-6"x20' / update permit date
R23	11/15/23	JR - Added Coming Soon banner wrap for pylon city name GO DIRECTIONAL SIGN
R24	11/28/23	JR - Added wayfinding directional sign
R25	11/29/23	JR - Revised directional sign logo to cast alum. plaque / add arch eng drwgs
R26	01/10/25	JR - Updated brick base / copy on panels /remove rest area copy



Side View

Pattern




BRICK:
SUMMIT - SPECIAL BLEND

Brick




GROUT:
DENVER CONCRETE -
SANDSTONE 242
(LIGHT BROOM)

CG-1 **Brick Base Detail (By Others)**
SCALE: 1 1/2" = 1'-0"

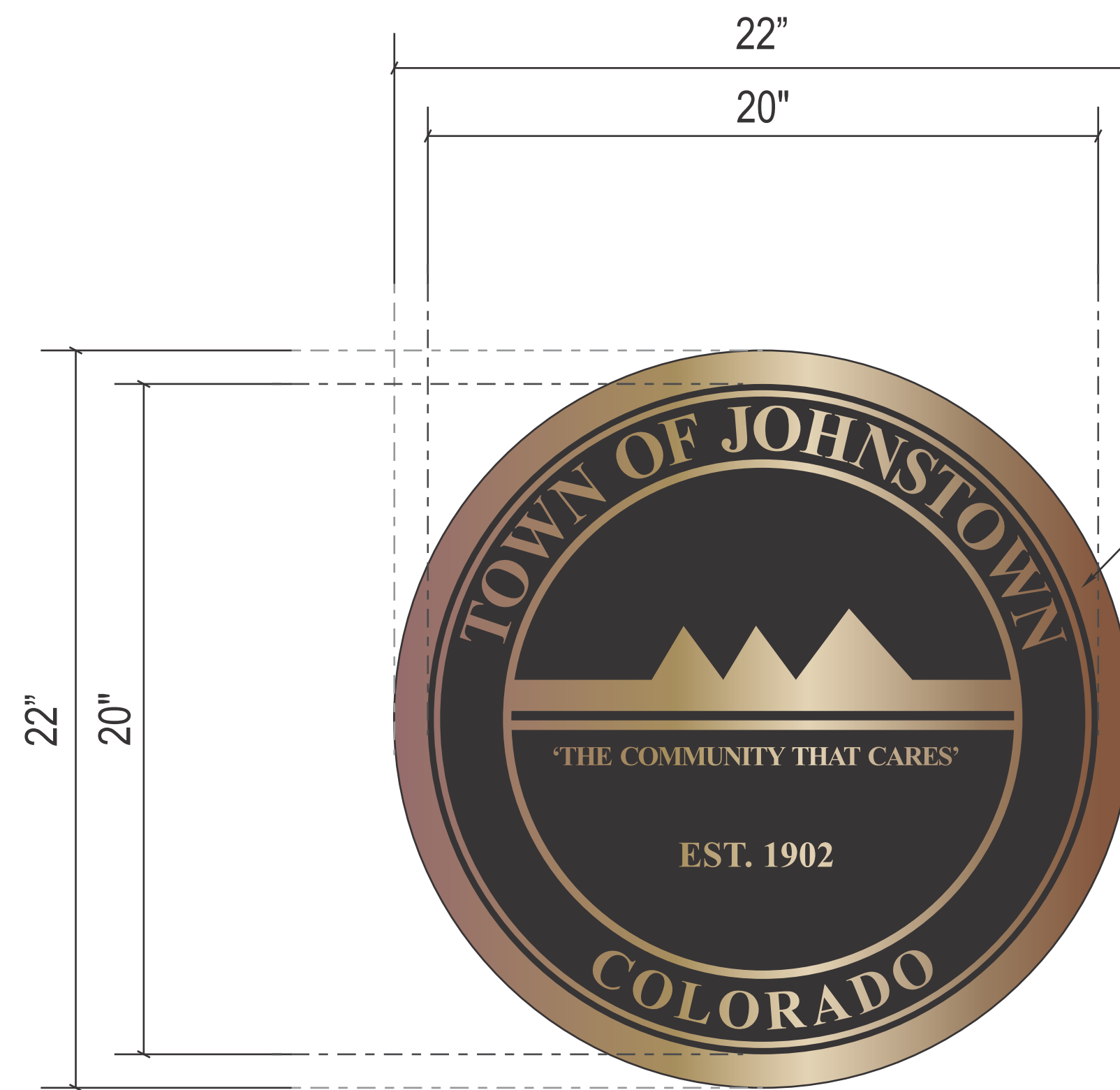


This rendering is the property of Southwest Signs, Inc. It is for the exclusive use of Southwest Signs, Inc. and the party for which it was intended, the requestor. It is an unpublished original drawing not to be distributed, reproduced or exhibited without the explicit consent of Southwest Signs, Inc. Please contact your Account Manager for questions regarding this statement.

Buc-ee's
WCR 48 & Interstate 25.
Johnstown, CO

Project ID#: **128135**
Project Mgr: Brenda A.
Designer: Josh D.
Created on: 07/12/2021

REVISION	
R21	08/24/23 JR - Revised interior letters to 28" at 200% spacing
R22	09/06/23 JR - Revised pylon logo to 20' city cabinet to 4'-6"x20' / update permit date
R23	11/15/23 JR - Added Coming Soon banner wrap for pylon city name cabinet
R24	11/28/23 JR - Added wayfinding directional sign
R25	11/29/23 JR - Revised directional sign logo to cast alum. plaque / add arch eng drwgs
R26	01/10/25 JR - Updated brick base / copy on panels /remove rest area copy



1" THICK CAST ALUMINUM PLAQUE WITH BRASS COLORED GRAPHICS AND BLACK BKGD.

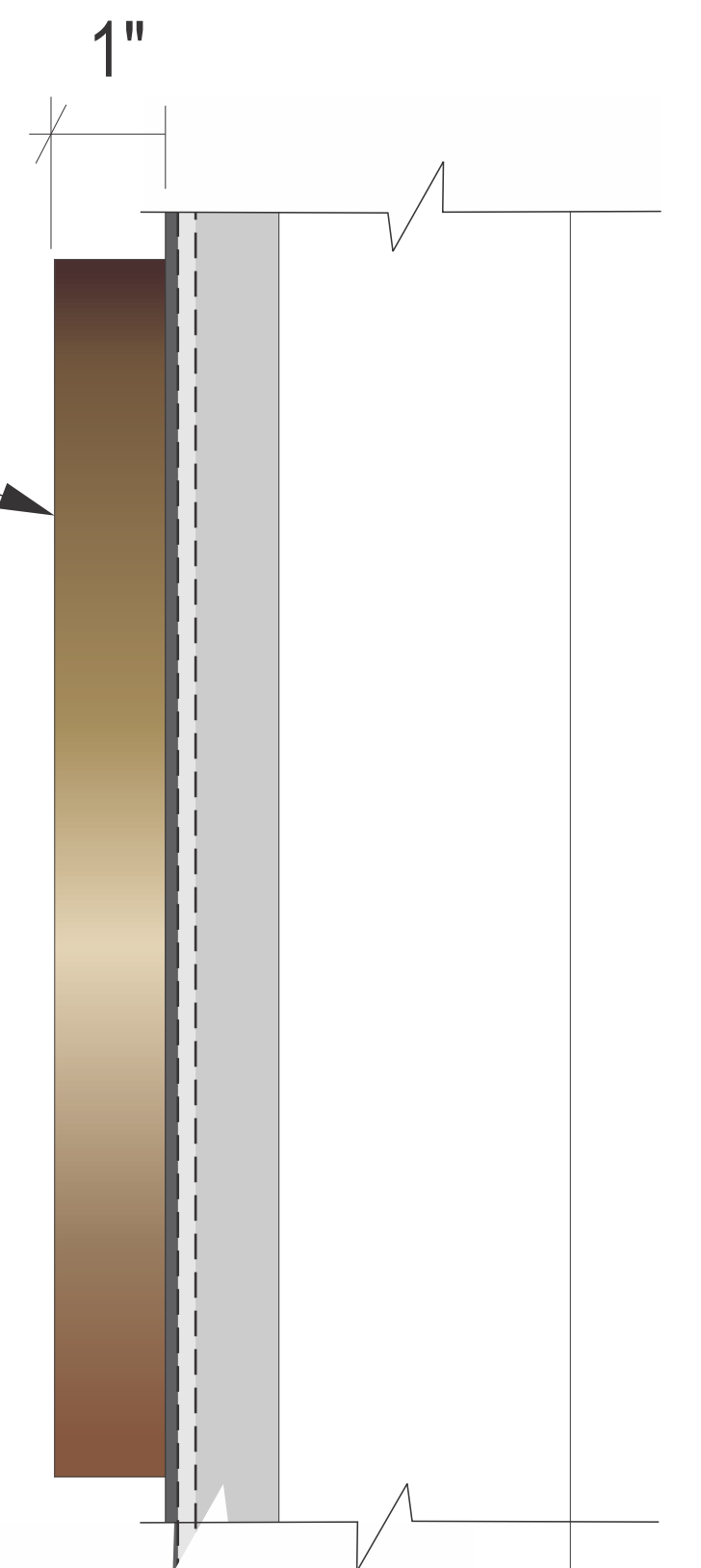


PLAQUE EXAMPLE

Sign Detail View

QTY: (2) Scale: 3" = 1'-0"

1" THICK CAST ALUMINUM PLAQUE MOUNTED FLUSH TO SIGN FRAMING



Section @ Logo Plaque

Non-illum. N.T.S

S/F Logo with Rout-out Graphics

MFG & INSTALL TWO (2) NON-ILLUMINATED ALUMINUM BRASS LOGOS WITH ROUT-OUT ALUMINUM LOGO MOUNTED ON BRASS FACE

BRASS LOGO - 1" THICK CAST ALUMINUM PLAQUE

LOGO FLUSH MOUNTED ON PYLON CABINET.



01 Pantone 000000
Satin Finish (non reflective) Painted Finish
RGB: R0/G0/B0
CMYK: C0/M0/Y0/K100



05 Brass
1" Thick Cast Aluminum Johnstown Logo Plaque (with Brass colored graphics)

Vector Artwork Required

GRAPHIC SHOWN IS FOR REPRESENTATIONAL PURPOSES ONLY AND NOT TO BE USED FOR FABRICATION. ARTWORK TO BE PROVIDED BY CUSTOMER PRIOR TO FABRICATION IN LINE ART / VECTOR FORMAT (EPS OR Ai FILE)



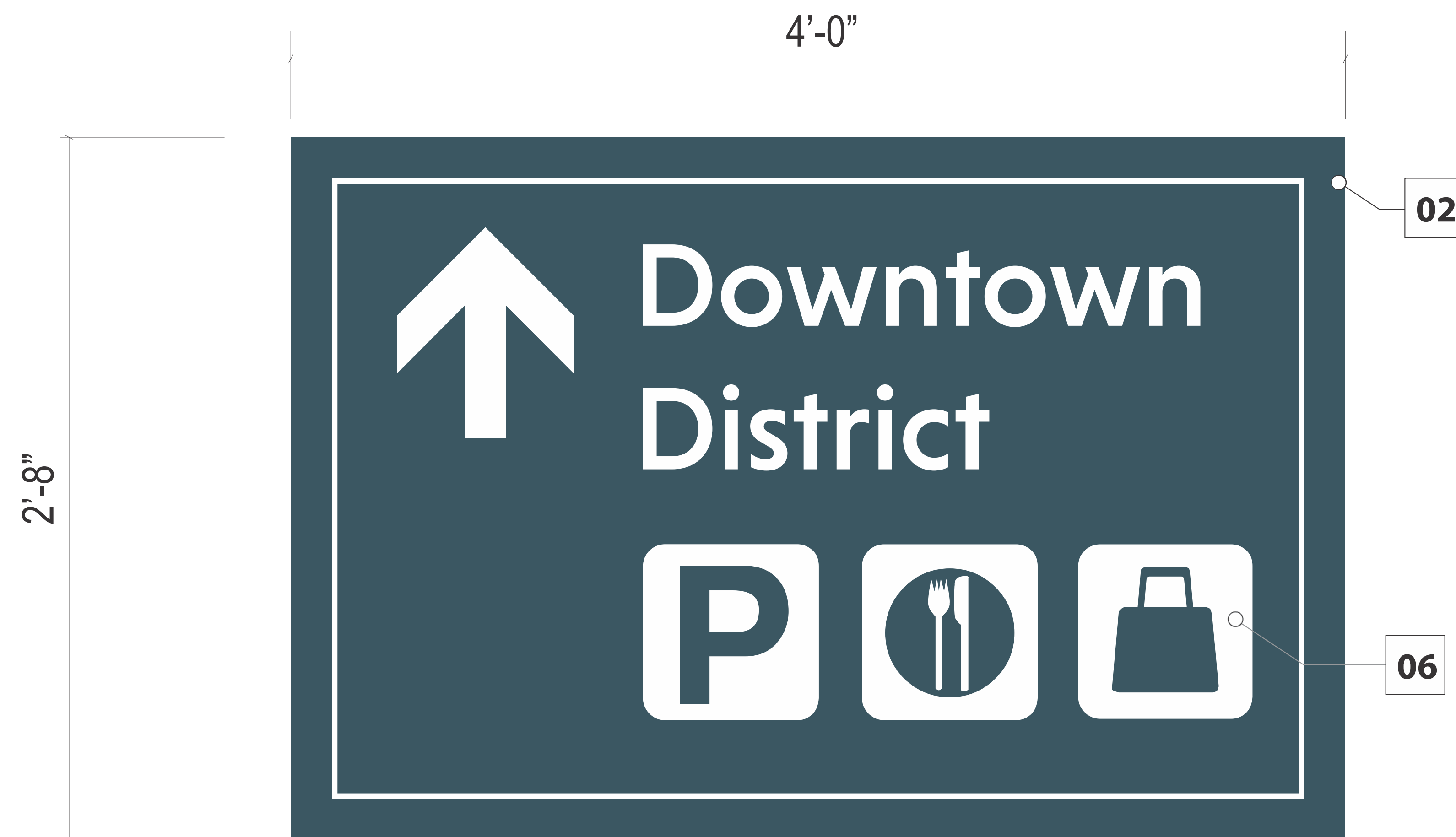
This rendering is the property of Southwest Signs, Inc. It is for the exclusive use of Southwest Signs, Inc. and the party for which it was intended, the requestor. It is an unpublished original drawing not to be distributed, reproduced or exhibited without the explicit consent of Southwest Signs, Inc. Please contact your Account Manager for questions regarding this statement.

Buc-ee's
WCR 48 & Interstate 25.
Johnstown, CO

Project ID#: 128135
Project Mgr: Brenda A.
Designer: Josh D.
Created on: 07/12/2021

REVISION	DATE	DESCRIPTION
R21	08/24/23	JR - Revised interior letters to 28" at 200% spacing
R22	09/06/23	JR - Revised pylon logo to 20' city cabinet to 4'-6" x 20' / update pylon logo
R23	11/15/23	JR - Added Coming Soon banner wrap for pylon city name cabinet
R24	11/28/23	JR - Added wayfinding directional sign
R25	11/29/23	JR - Revised directional sign logo to cast alum. plaque / add arch eng drwgs
R26	01/10/25	JR - Updated brick base / copy on panels / remove rest area copy

04 LOGO SIGN



FRONT PANEL



BACK PANEL

Sign Detail View

QTY: (2) Scale: 3" = 1'-0"

S/F Reverse Channel Pan with Reflective Vinyl

MFG & INSTALL TWO (2) NON-ILLUMINATED ALUMINUM REVERSE CHANNEL PAN PANELS WITH VINYL GRAPHICS MOUNTED ON SQUARE TUBE SUPPORTS

PAN PANEL - ALUMINUM FACE AND 1 1/2" DEEP RETURNS PAINTED TO MATCH COLOR SPECS.

COPY AND ICONS - REFLECTIVE WHITE VINYL

PAN PANEL FLUSH MOUNTED ON PYLON SQUARE TUBE SUPPORTS.



02 Pantone 2B4D59
Satin Finish (non reflective) Painted Finish
RGB: R43/G77/B90
CMYK: C85/M58/Y49/K32



03 Cardinal Paint 'Rust Texture'
Color: T091-BR47
Finish: Matte (non reflective) Painted Finish



06 PMS White
Satin Finish (non reflective) Painted Finish



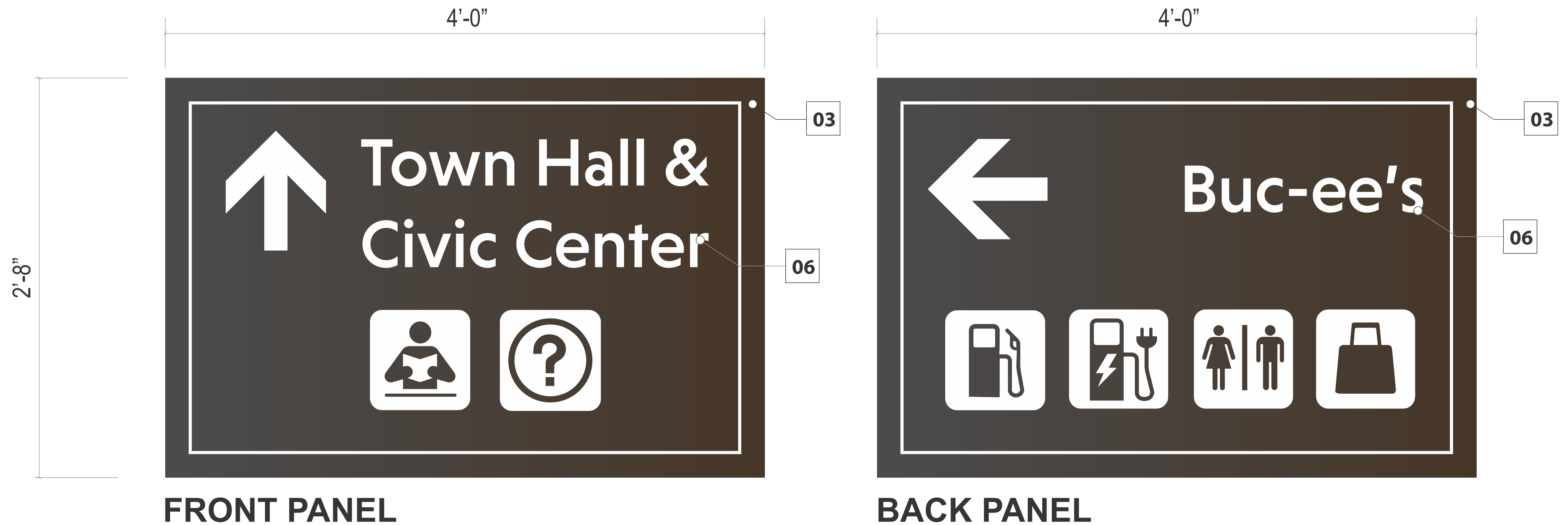
This rendering is the property of Southwest Signs, Inc. It is for the exclusive use of Southwest Signs, Inc. and the party for which it was intended, the requestor. It is an unpublished original drawing not to be distributed, reproduced or exhibited without the explicit consent of Southwest Signs, Inc. Please contact your Account Manager for questions regarding this statement.

Buc-ee's
WCR 48 & Interstate 25.
Johnstown, CO

Project ID#: 128135
Project Mgr: Brenda A.
Designer: Josh D.
Created on: 07/12/2021

REVISION	DESCRIPTION
R21 08/24/23	JR - Revised interior letters to 28" at 200% spacing
R22 09/06/23	JR - Revised pylon logo to 20' city cabinet to 4'-6"x20' / update per 06 sign
R23 11/15/23	JR - Added Coming Soon banner wrap for pylon city name cabinet 06 sign
R24 11/28/23	JR - Added wayfinding directional sign
R25 11/29/23	JR - Revised directional sign logo to cast alum. plaque / add arch eng drwgs
R26 01/10/25	JR - Updated brick base / copy on panels /remove rest area copy

06 SIGN
PANELS



FRONT PANEL

BACK PANEL

Sign Detail View

QTY: (2) Scale: 3" = 1'-0"

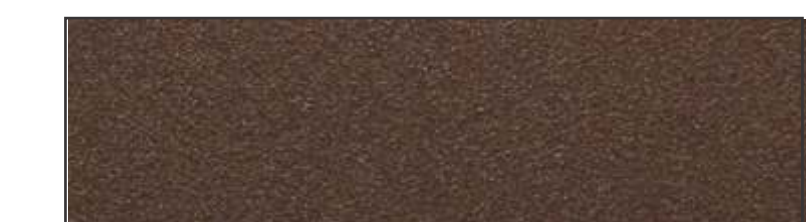
S/F Reverse Channel Pan with Reflective Vinyl

MFG & INSTALL TWO (2) NON-ILLUMINATED ALUMINUM REVERSE CHANNEL PAN PANELS WITH VINYL GRAPHICS MOUNTED ON SQUARE TUBE SUPPORTS

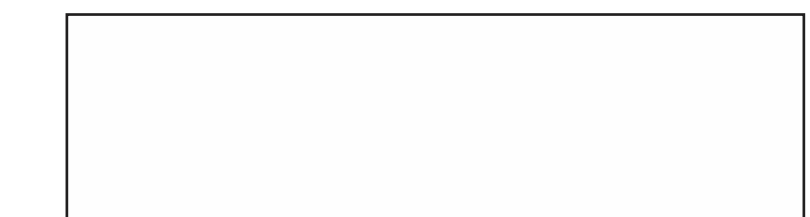
PAN PANEL - ALUMINUM FACE AND 1 1/2" DEEP RETURNS PAINTED TO MATCH COLOR SPECS.

COPY AND ICONS - REFLECTIVE WHITE VINYL

PAN PANEL FLUSH MOUNTED ON PYLON SQUARE TUBE SUPPORTS.



03 Cardinal Paint 'Rust Texture'
Color: T091-BR47
Finish: Matte (non reflective) Painted Finish



06 PMS White
Satin Finish (non reflective) Painted Finish



This rendering is the property of Southwest Signs, Inc. It is for the exclusive use of Southwest Signs, Inc. and the party for which it was intended, the requestor. It is an unpublished original drawing not to be distributed, reproduced or exhibited without the explicit consent of Southwest Signs, Inc. Please contact your Account Manager for questions regarding this statement.

Buc-ee's
WCR 48 & Interstate 25.
Johnstown, CO

Project ID#: 128135
Project Mgr: Brenda A.
Designer: Josh D.
Created on: 07/12/2021

REVISION	DESCRIPTION
R21 08/24/23	JR - Revised interior letters to 28" at 200% spacing
R22 09/06/23	JR - Revised pylon logo to 20' city cabinet to 4'-6"x20' / update per 06 sign
R23 11/15/23	JR - Added Coming Soon banner wrap for pylon city name cabinet
R24 11/28/23	JR - Added wayfinding directional sign
R25 11/29/23	JR - Revised directional sign logo to cast alum. plaque / add arch eng drwgs
R26 01/10/25	JR - Updated brick base / copy on panels /remove rest area copy

06 SIGN PANELS



FRONT PANEL

FRONT PANEL

Sign Detail View

QTY: (2) Scale: 3" = 1'-0"

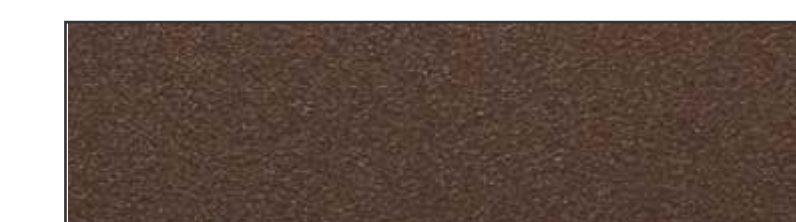
S/F Reverse Channel Pan with Reflective Vinyl

MFG & INSTALL TWO (2) NON-ILLUMINATED ALUMINUM REVERSE CHANNEL PAN PANELS WITH VINYL GRAPHICS MOUNTED ON SQUARE TUBE SUPPORTS

PAN PANEL - ALUMINUM FACE AND 1 1/2" DEEP RETURNS PAINTED TO MATCH COLOR SPECS.

COPY AND ICONS - REFLECTIVE WHITE VINYL

PAN PANEL FLUSH MOUNTED ON PYLON SQUARE TUBE SUPPORTS.



03 Cardinal Paint 'Rust Texture'
Color: T091-BR47
Finish: Matte (non reflective) Painted Finish



06 PMS White
Satin Finish (non reflective) Painted Finish



This rendering is the property of Southwest Signs, Inc. It is for the exclusive use of Southwest Signs, Inc. and the party for which it was intended, the requestor. It is an unpublished original drawing not to be distributed, reproduced or exhibited without the explicit consent of Southwest Signs, Inc. Please contact your Account Manager for questions regarding this statement.

Buc-ee's
WCR 48 & Interstate 25.
Johnstown, CO

Project ID#: 128135
Project Mgr: Brenda A.
Designer: Josh D.
Created on: 07/12/2021

REVISION	DESCRIPTION
R21 08/24/23	JR - Revised interior letters to 28" at 200% spacing
R22 09/06/23	JR - Revised pylon logo to 20' city cabinet to 4'-6"x20' / update per original sign
R23 11/15/23	JR - Added Coming Soon banner wrap for pylon city name cabinet
R24 11/28/23	JR - Added wayfinding directional sign
R25 11/29/23	JR - Revised directional sign logo to cast alum. plaque / add arch eng drwgs
R26 01/10/25	JR - Updated brick base / copy on panels / remove rest area copy

ORIGINAL
PANELS

COLOR, TYPOGRAPHY & ARTWORK

Sign Color/Materials Palette

Fabricator is responsible for supplying samples for all colors/materials in the palette. Colors are referenced on the signage design elevations.



01 Pantone 000000
Satin Finish (non reflective) Painted Finish
RGB: R0/G0/B0
CMYK: C0/M0/Y0/K100



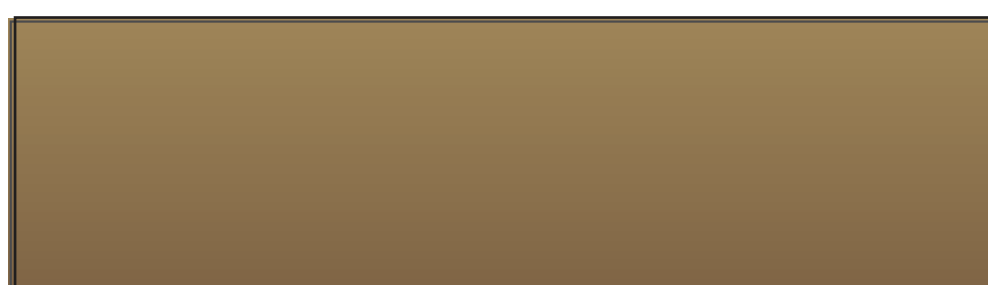
02 Pantone 2B4D59
Satin Finish (non reflective) Painted Finish
RGB: R43/G77/B90
CMYK: C85/M58/Y49/K32



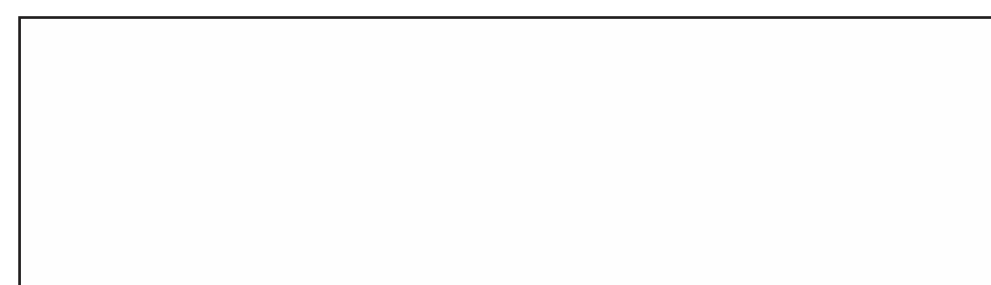
03 Cardinal Paint 'Rust Texture'
Color: T091-BR47
Finish: Matte (non reflective) Painted Finish



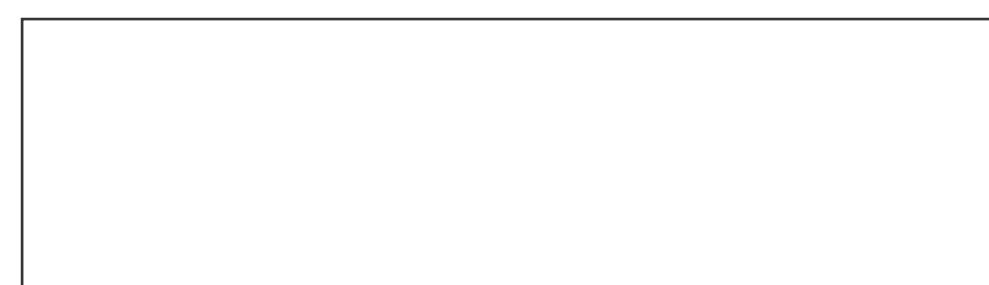
04 Cardinal Paint 'Gold Vein'
Color: T375-BK10
Finish: Matte (non reflective) Painted Finish



05 Brass
1" Thick Cast Aluminum Johnstown
Logo Plaque (with Brass colored graphics)



06 PMS White
Satin Finish (non reflective) Painted Finish



07 Clear Coat
Anti-Graffiti Clear Coat (non reflective)
(On All Sign Faces/ Surfaces/Lettering)



08 Reflective White
ORALITE 5800 White
(Sign Text)



09 General Shale 'Sonoma' Clay Brick
<https://generalshale.com/products/sonoma/> (to be provided by the Town)



10 Colored Concrete, Light Broom Finish
Denver Concrete - Sandstone (242)
(Any exposed signage footers)

Niveau Grotesk

ABCDEFGHIJKLMNOPQRSTUVWXYZ

abcdefghijklmnopqrstuvwxyz



This rendering is the property of Southwest Signs, Inc. It is for the exclusive use of Southwest Signs, Inc. and the party for which it was intended, the requestor. It is an unpublished original drawing not to be distributed, reproduced or exhibited without the explicit consent of Southwest Signs, Inc. Please contact your Account Manager for questions regarding this statement.

Buc-ee's
WCR 48 & Interstate 25.
Johnstown, CO

Project ID#: 128135
Project Mgr: Brenda A.
Designer: Josh D.
Created on: 07/12/2021

REVISION	DESCRIPTION
R21 08/24/23	JR - Revised interior letters to 28" at 200% spacing
R22 09/06/23	JR - Revised pylon logo to 20' city cabinet to 4'-6"x20' / update per 08 SIGN COLORS
R23 11/15/23	JR - Added Coming Soon banner wrap for pylon city name cabinet
R24 11/28/23	JR - Added wayfinding directional sign
R25 11/29/23	JR - Revised directional sign logo to cast alum. plaque / add arch eng drwgs
R26 01/10/25	JR - Updated brick base / copy on panels /remove rest area copy

11545 W. BERNARDO COURT, SUITE 201
SAN DIEGO, CA 92127
PROJECTMANAGER@SULLAWAYENG.COM
PHONE: 1-858-312-5150 FAX: 1-858-777-3534

PROJECT: BUC-EE'S, 5201 NUGGET ROAD, JOHNSTOWN, CO
PROJECT #: 43245-1
CLIENT: APEX SIGN GROUP (DIVISION OF SOUTHWEST SIGNS)

DATE: 11/22/2023
ENGINEER: PRC
LAST REVISED:

10"x1'-6"x5/8" STEEL PLATE
W/ (4) 5/8" Ø THREADED ANCHOR RODS
MIN. EMBED. = 16" INTO CONCRETE
W/NUT/WASHER/NUT @ EMBED. END
BASE PLATE, TYP.

(2) 4X4X3/16" SQ. HSS TYP.

8" FULLY GROUTED CMU WALL W/ BRICK VENEER

5'-6"X2'-6"X4'-5" DEEP CONCRETE FOOTING
#4 @ 12" TIE
#4 @ 12" LONGITUDINAL BAR EACH FACE

ELEVATION

GENERAL NOTES

- DESIGN CODE: IBC 2018
- DESIGN LOADS: ASCE 7-16
- WIND VELOCITY 115 MPH EXPOSURE C
- CONCRETE 2500 PSI MINIMUM
- THE C.M.U. BLOCK SHALL CONFORM TO ASTM C90 WITH STRENGTH F'M = 1500 PSI.
- MORTAR PER ASTM C270, TYPE S WITH A MINIMUM STRENGTH OF 1800 PSI.
- GROUT SHALL BE IN CONFORMANCE WITH ASTM C476. COMPRESSIVE STRENGTH AS PER ASTM C1019.
- CELLS SHALL BE FILLED SOLID WITH GROUT.
- VERTICAL BARS ARE TO BE TIED OR FIXED IN POSITION BY OTHER MEANS AND IN INTERVALS NOT LESS THAN 200 BAR DIAMETERS.
- SQ. HSS STEEL ASTM A500 GR. B, F_y = 46 KSI MIN.
- PLATE STEEL ASTM A36
- WELDING STRENGTH, FEXX = 70 KSI MIN.
- THREADED ANCHOR ROD STEEL ASTM F1554 GR. 36
- STEEL REINFORCEMENT IN CONCRETE ASTM A615 GR 60
- PROVIDE MIN. 3" CLEAR COVER ON ALL STEEL EMBEDDED IN CONCRETE WHEN CAST AGAINST SOIL
- LATERAL SOIL BEARING PER IBC CLASS 4 (150 PSF/FT)
- PROVIDE PROTECTION AGAINST DISSIMILAR METALS
- ALL DIMENSIONS TO BE VERIFIED PRIOR TO FABRICATION

11545 W. BERNARDO COURT, SUITE 201
SAN DIEGO, CA 92127
PROJECTMANAGER@SULLAWAYENG.COM
PHONE: 1-858-312-5150 FAX: 1-858-777-3534

PROJECT: BUC-EE'S, 5201 NUGGET ROAD, JOHNSTOWN, CO
PROJECT #: 43245-1
CLIENT: APEX SIGN GROUP (DIVISION OF SOUTHWEST SIGNS)

DATE: 11/22/2023
ENGINEER: PRC
LAST REVISED:

SECTION

STEEL TUBE AND BASE PLATE W/ ANCHOR BOLTS NOT SHOWN FOR CLARITY



This rendering is the property of Southwest Signs, Inc. It is for the exclusive use of Southwest Signs, Inc. and the party for which it was intended, the requestor. It is an unpublished original drawing not to be distributed, reproduced or exhibited without the explicit consent of Southwest Signs, Inc. Please contact your Account Manager for questions regarding this statement.

Buc-ee's
WCR 48 & Interstate 25.
Johnstown, CO

Project ID#: 128135
Project Mgr: Brenda A.
Designer: Josh D.
Created on: 07/12/2021

REVISION	DATE	DESCRIPTION
R21	08/24/23	JR - Revised interior letters to 28" at 200% spacing
R22	09/06/23	JR - Revised pylon logo to 20' city cabinet to 4'-6"x20' / update permit date
R23	11/15/23	JR - Added Coming Soon banner wrap for pylon city name cabinet
R24	11/28/23	JR - Added wayfinding directional sign
R25	11/29/23	JR - Revised directional sign logo to cast alum. plaque / add arch eng drwgs
R26	01/10/25	JR - Updated brick base / copy on panels /remove rest area copy