

**Area 1 - 25 - 34**

Yellow Areas - Mill 2", place 2" (GR SX 75 PG 64-22 w/fiber). Green Area - Mill 2" and place 2" (GR SX 75 PG 64-22 w/fiber).

Item	Unit of Measure	Estimated Bid Qty.	UNIT PRICE BID	EXTENDED VALUE
Mobilization	LS	1		\$ -
Yellow Area - Removal of Asphalt Mat (Planing) (2")	SY	2,589		\$ -
Emulsified Asphalt	GAL	130		\$ -
Yellow Area - 2" HMA w/fiber (SX)(75)(PG 64-22)	Ton	300		\$ -
Green Area - Removal of Asphalt Mat (Planing) (2")	SY	13,580		\$ -
Emulsified Asphalt	GAL	679		\$ -
Green Area - 2" HMA w/fiber (SX)(75)(PG 64-22)	Ton	1,575		\$ -
Re-stripe to match existing layout with Epoxy	LS	1		\$ -
Traffic Control (Roundabout full night closure 9PM - 5AM)	LS	1		\$ -
Traffic Control remainder of project	LS	1		\$ -

**Area 1 - Total Bid**

\$

-



**Area 2 - CR 13**

Blue Area- Remove existing material to a depth of 7", Place and compact 5" (GR S) and 2" (GR SX).  
 Green Area - Mill 2" from RR Tracks South to CR 46, Place 4" (GR SX 75 PG 64-22 w/fiber). Include 2" risers for valve box utilities. Haul millings to Town dump site (CR 17 & CR 46 1/2)

Item	Unit of Measure	Estimated Bid Qty.	UNIT PRICE BID	EXTENDED VALUE
Mobilization	LS	1		\$ -
Blue Area - Remove 7" existing material	SY	560		\$ -
Blue Area - HMA (S) (75) (PG 64-22)	Ton	155		\$ -
Blue Area - HMA w/fiber (SX)(75)(PG 64-22)	Ton	62		\$ -
Green Area - Removal of Asphalt Mat (Planing) (2") Haul millings to Town Site - CR 17 and CR 46 1/2	SY	7,549		\$ -
Emulsified Asphalt	GAL	377		\$ -
Green Area - Place 4" HMA w/fiber (SX)(75)(PG 64-22)	Ton	1,751		\$ -
Valve box risers	EA	8		\$ -
Re-stripe to match existing layout with Epoxy	LS	1		\$ -
Traffic Control (PH 1 - Full closure from RR tracks north and from RR tracks south to Roosevelt Pkwy. Phase 2 - Full closure from Roosevelt Pkwy south to CR 46.)	LS	1		\$ -

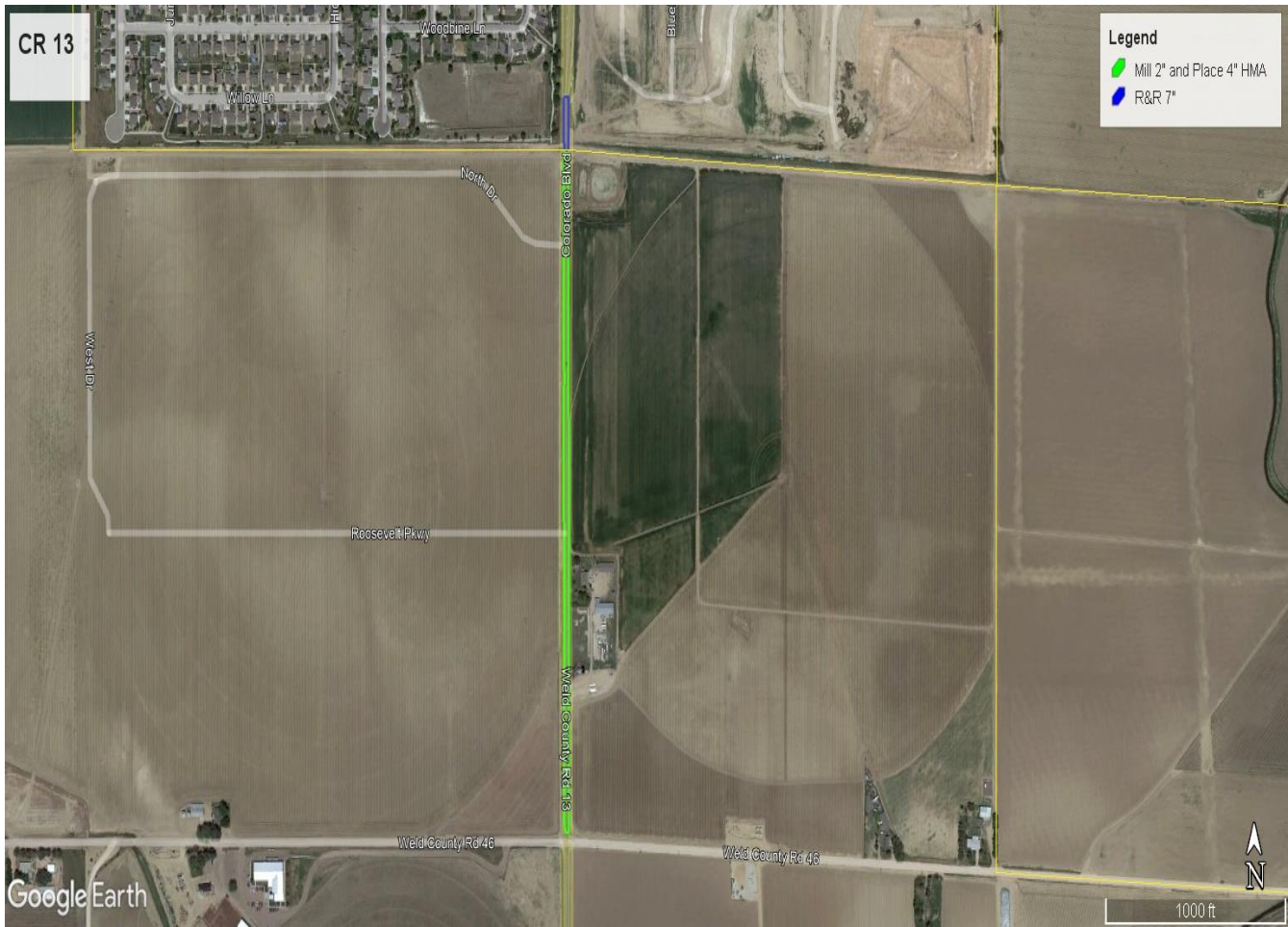
**Area 2 - Total Bid**

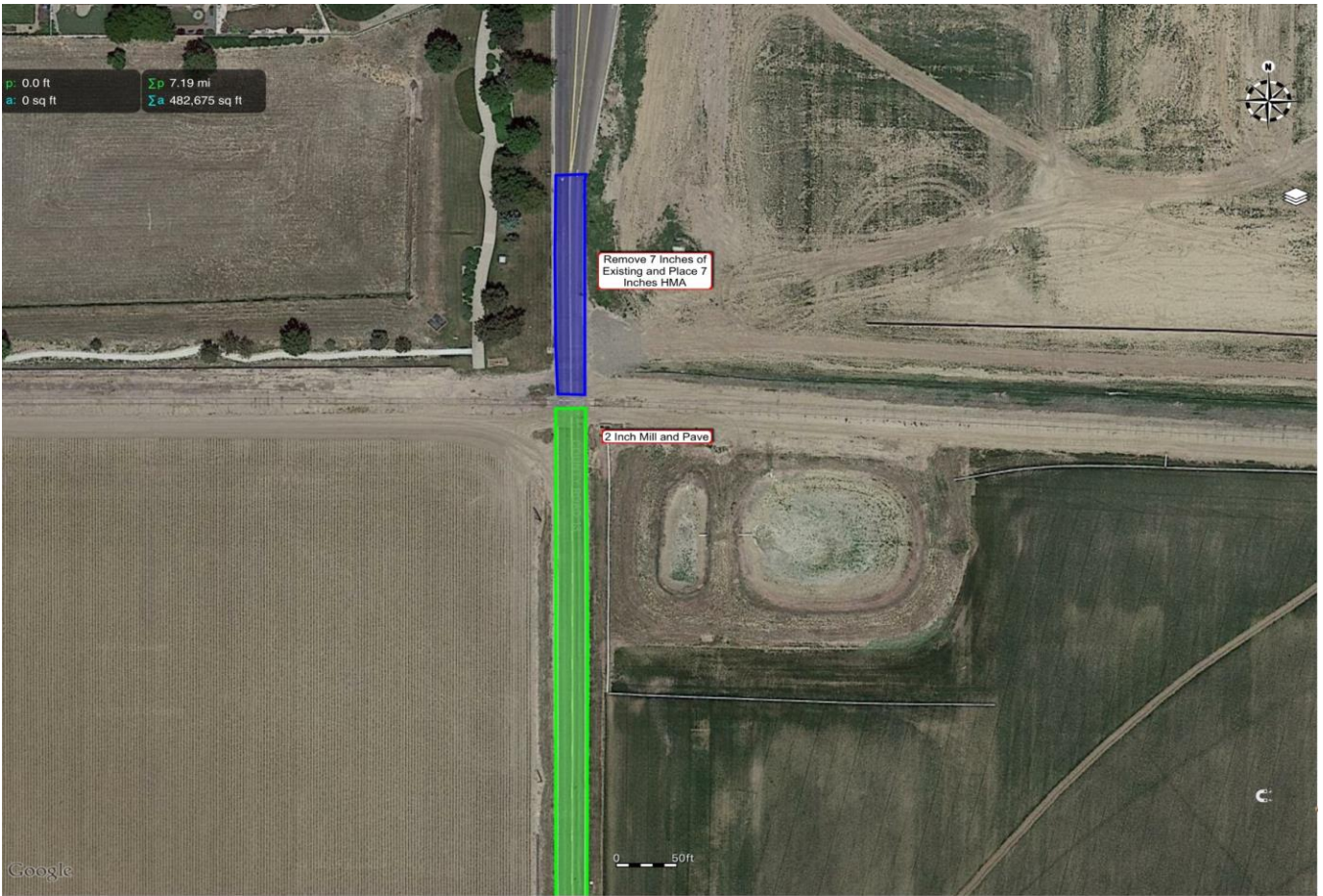
\$ -

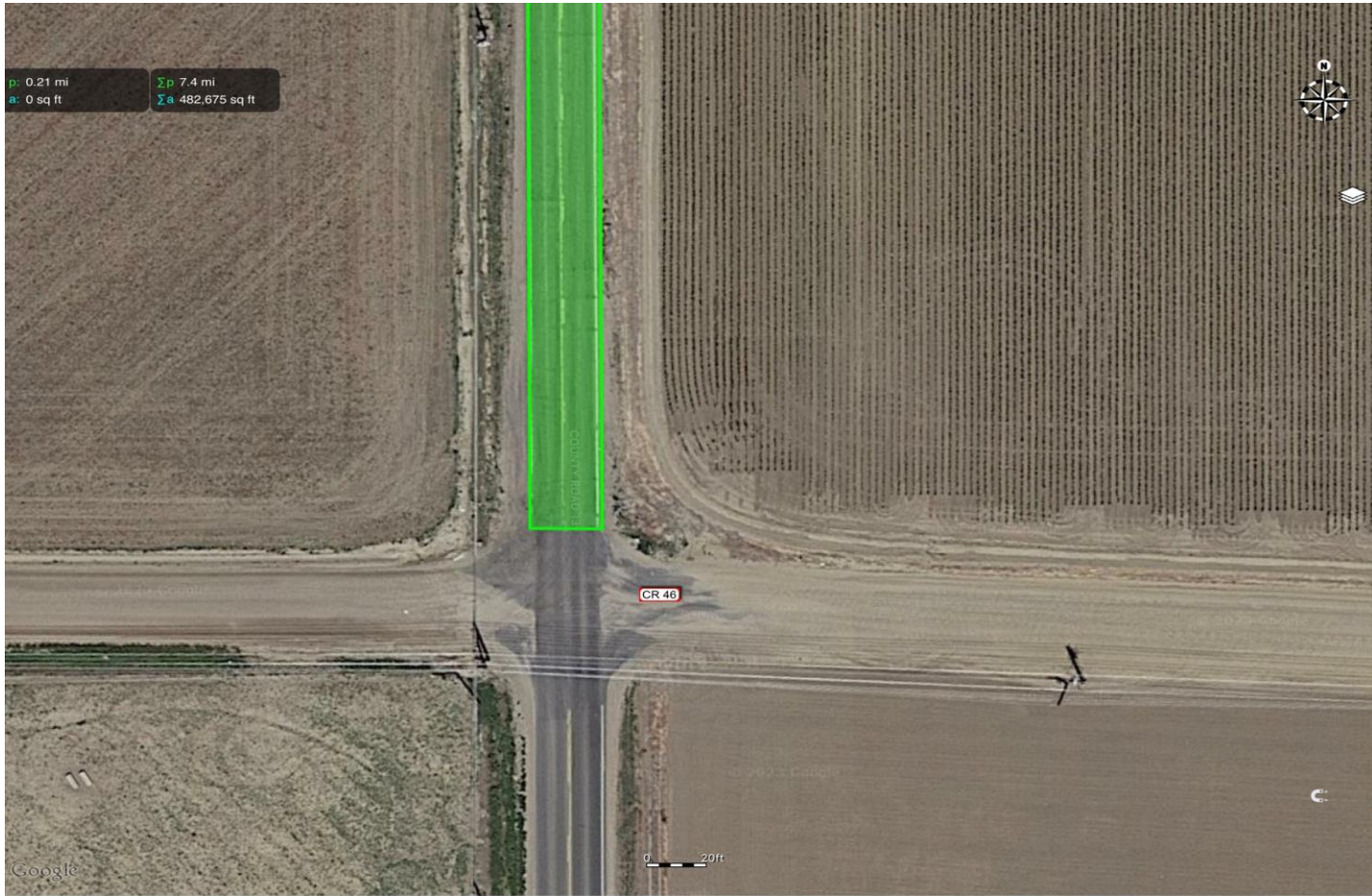
CR 13

**Legend**

- Mill 2" and Place 4" HMA
- R&R 7"









**Area 3 - CR 15**

Green Area - Mill 2" on East lane from W. South 1st Street to RR Tracks, Place 2" (GR SX 75 PG 64-22 w/fiber). White Area - Full Width Overlay 2" (GR SX 75 PG 64-22 w/fiber). Include 2" Risers for Valve Box Utilities. Haul millings to Town dump site (CR 17 & CR 46 1/2). Striping to be completed by others.

Item	Unit of Measure	Estimated Bid Qty.	UNIT PRICE BID	EXTENDED VALUE
Mobilization	LS	1		\$ -
Green Area - Removal of Asphalt Mat (Planing) (2") (East Lane) Haul millings to Town Site - CR 17 and CR 46 1/2	SY	3,256		\$ -
Emulsified Asphalt	GAL	163		\$ -
Green Area - 2" HMA (SX)(75)(PG 64-22) with fiber (East Lane)	Ton	378		\$ -
Emulsified Asphalt	GAL	276		\$ -
White Area (5525 SY) - 2" HMA (SX)(75)(PG 64-22) with fiber (Full width from Mountain View Drive )	Ton	641		\$ -
Traffic Control - 2 phases with full closure (North of Mountainview Drive to SH 60 and south of Mountain View Drive to RR tracks)	LS	1		\$ -

<b>Area 3 - Total Bid</b>	\$ -
---------------------------	------



CR 15

60

Raven Ln

Wood Dr

60

Wipe

S 1st St

Charlotte St

S 1st St

**Legend**

- 2 INCH MILL AND PAVE
- 2 INCH OVERLAY

Sandra Dr

Country Acres Dr

King Ave

Hays Ave

Country Acres Dr

Avira St

Dee Rd

Granger Ln

Pioneer Ln

Homestead Ln

Google Earth

15

1000 ft



OUTH FIRST ST

100

p: 1.06 mi

$\Sigma p$  7.04 mi

a: 121,158 sq ft

$\Sigma a$  482,675 sq ft

W SOUTH FIRST ST

90



2 inch mill and pave - East lane only on CR 15 from W. South First Street South to RR Tracks

2 inch full width overlay from Mountainview Drive South to RR Tracks

COUNTRY ACRES DR

MOUNTVIEW DR

Google

0 100ft

p: 1.06 mi  
a: 121,158 sq ft

$\Sigma p$  7.04 mi  
 $\Sigma a$  482,675 sq ft

2 inch full width overlay  
from Mountainview Drive  
South to RR Tracks

2 inch mill and pave - East  
lane only on CR 15 from  
W. South First Street  
South to RR Tracks



Google

0 50ft

C



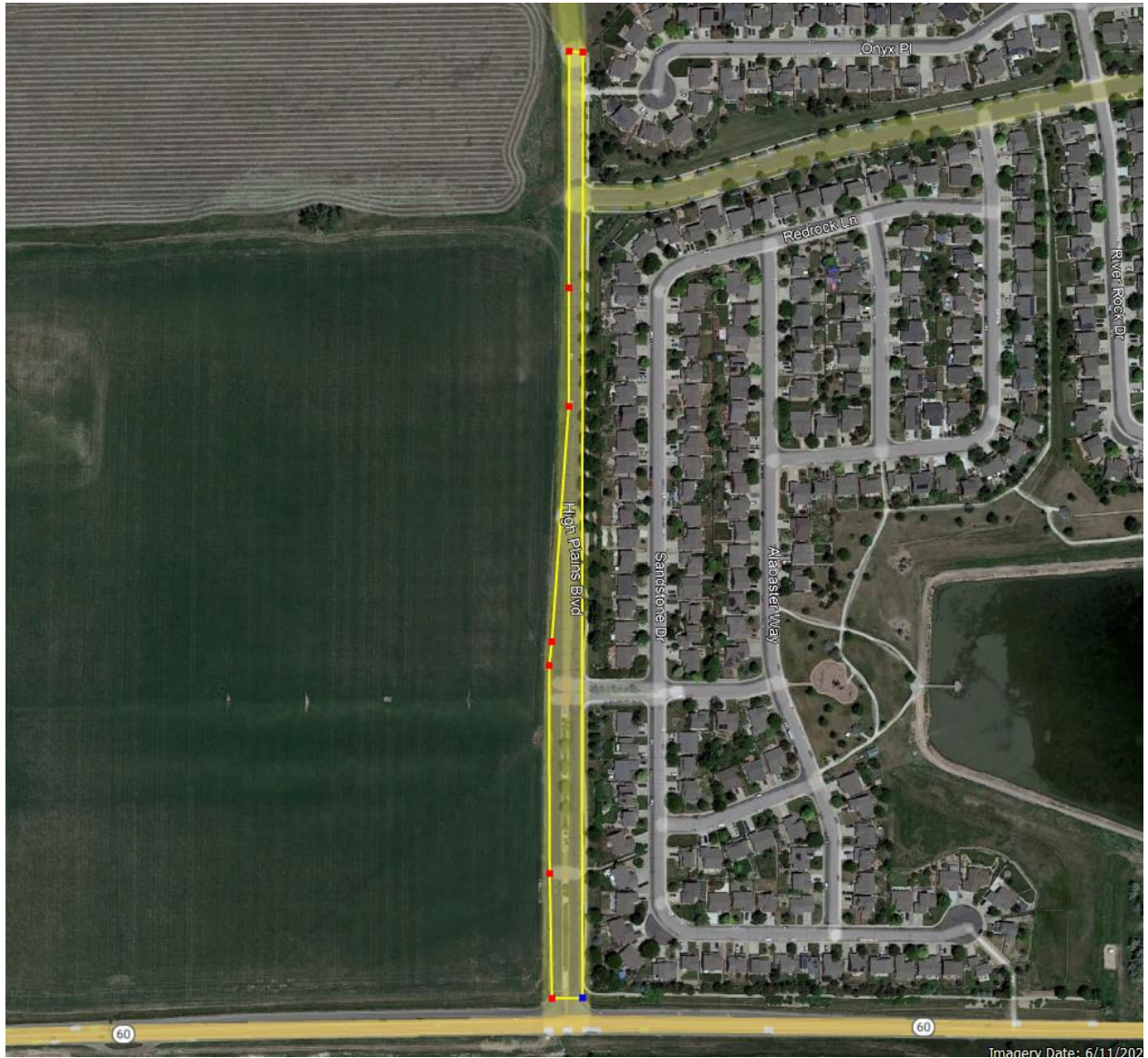
p: 0.0 ft  
Σ p 7.19 mi  
a: 0 sq ft  
Σ a 482,675 sq ft

Dump Site for millings  
from CR 13 & 15 -  
Located at CR 17 AND  
CR 46 1/2

0 200ft

Google

ADDITIONAL SCOPE OF WORK ALTERNATE  
3" MILL and OVERLAY



ADDITIONAL SCOPE OF WORK ALTERNATE  
3" OVERLAY

