


REV #	DATE	DESCRIPTION	REQUESTED BY

2550 HERITAGE COURT, STE 250
ATLANTA, GA 30339
TEL 770.951.2495, FAX 770.951.2496
www.oneatlas.com



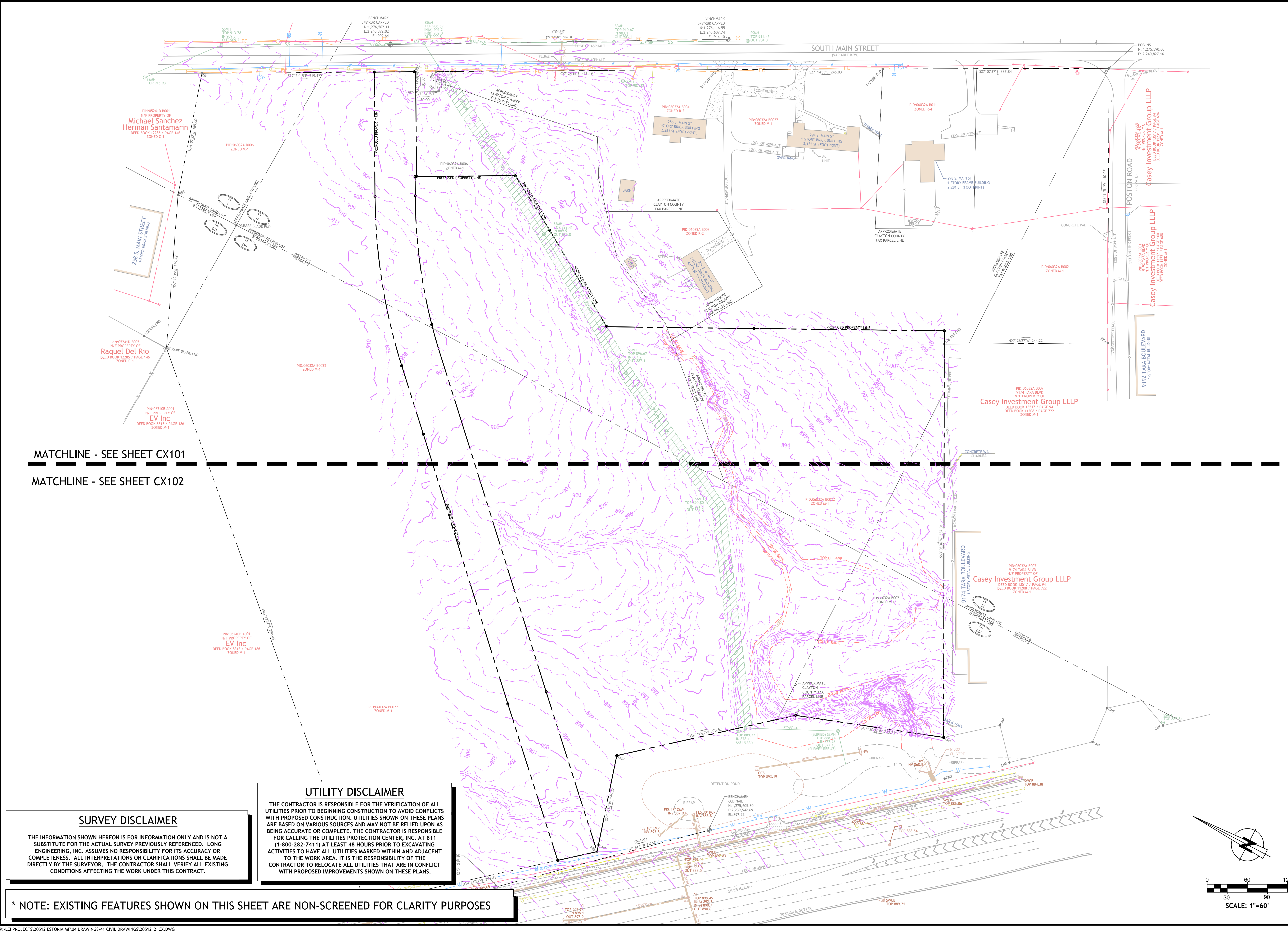
ESTORIA MULTIFAMILY
294 S MAIN ST
JONESBORO, GA 30236
DISTRICTS 5, 6

EXISTING CONDITIONS

GEORGIA

SHEET
CX100

NOT ISSUED FOR CONSTRUCTION



MATCHLINE - SEE SHEET CX101
MATCHLINE - SEE SHEET CX102

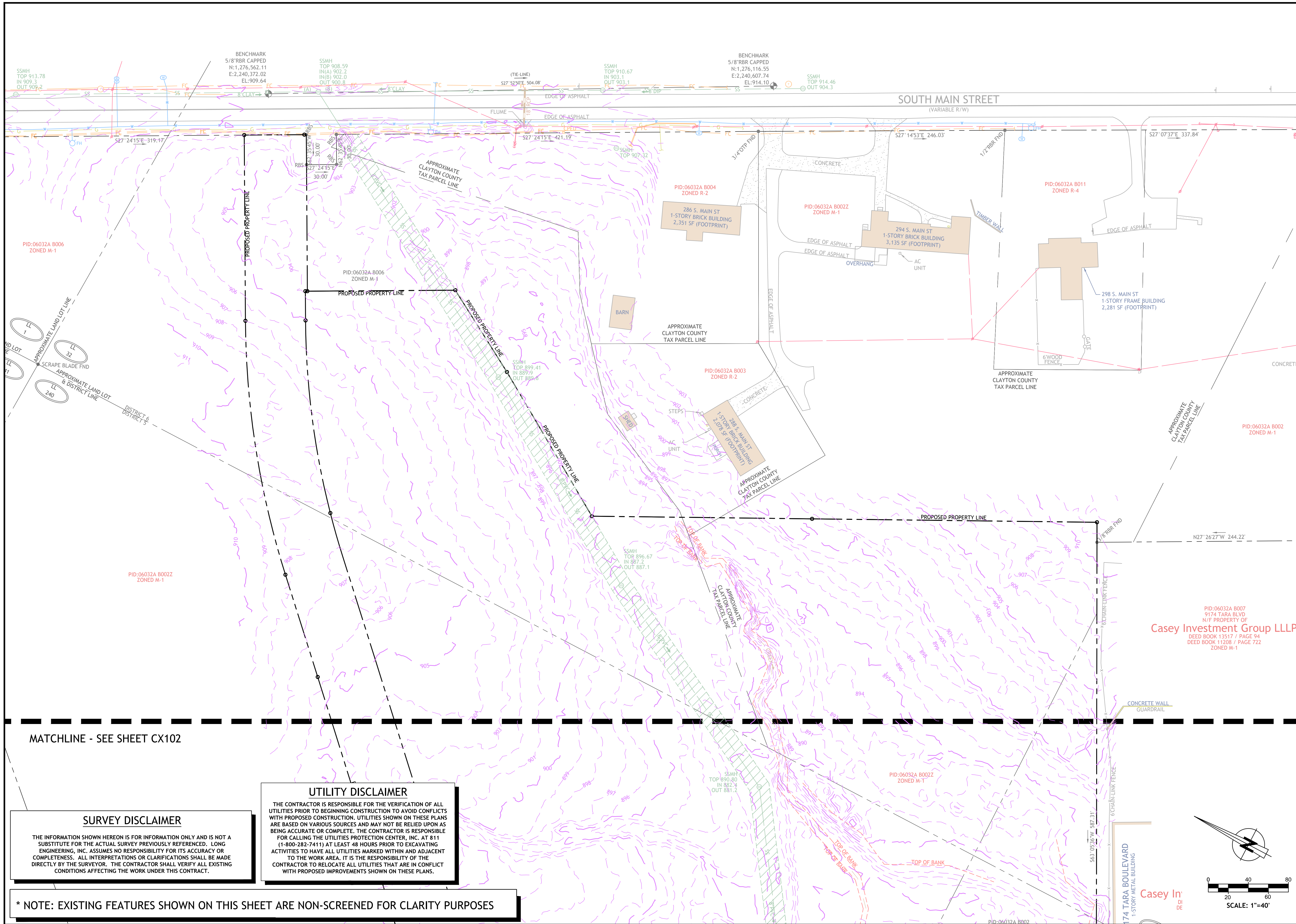
SURVEY DISCLAIMER

THE INFORMATION SHOWN HEREON IS FOR INFORMATION ONLY AND IS NOT A SUBSTITUTE FOR THE ACTUAL SURVEY PREVIOUSLY REFERENCED. LONG ENGINEERING, INC. ASSUMES NO RESPONSIBILITY FOR ITS ACCURACY OR COMPLETENESS. ALL INTERPRETATIONS OR CLARIFICATIONS SHALL BE MADE DIRECTLY BY THE SURVEYOR. THE CONTRACTOR SHALL VERIFY ALL EXISTING CONDITIONS AFFECTING THE WORK UNDER THIS CONTRACT.

UTILITY DISCLAIMER

THE CONTRACTOR IS RESPONSIBLE FOR THE VERIFICATION OF ALL UTILITIES PRIOR TO BEGINNING CONSTRUCTION TO AVOID CONFLICTS WITH PROPOSED CONSTRUCTION. UTILITIES SHOWN ON THESE PLANS ARE BASED ON VARIOUS SOURCES AND MAY NOT BE RELIED UPON AS BEING ACCURATE OR COMPLETE. THE CONTRACTOR IS RESPONSIBLE FOR CALLING THE UTILITIES PROTECTION CENTER, INC. AT 811 (1-800-282-7411) AT LEAST 48 HOURS PRIOR TO EXCAVATING ACTIVITIES TO HAVE ALL UTILITIES MARKED WITHIN AND ADJACENT TO THE WORK AREA. IT IS THE RESPONSIBILITY OF THE CONTRACTOR TO RELOCATE ALL UTILITIES THAT ARE IN CONFLICT WITH PROPOSED IMPROVEMENTS SHOWN ON THESE PLANS.

* NOTE: EXISTING FEATURES SHOWN ON THIS SHEET ARE NON-SCREENED FOR CLARITY PURPOSES



REV #	DATE	DESCRIPTION	REQUESTED BY

2550 HERITAGE COURT, STE 250
 ATLANTA, GA 30339
 TEL 770.951.2495, FAX 770.951.2496
 www.oneatlas.com

ESTORIA MULTIFAMILY
 294 S MAIN ST
 JONESBORO, GA 30236

EXISTING CONDITIONS
 DISTRICTS 5, 6

GEORGIA

SHEET
CX101

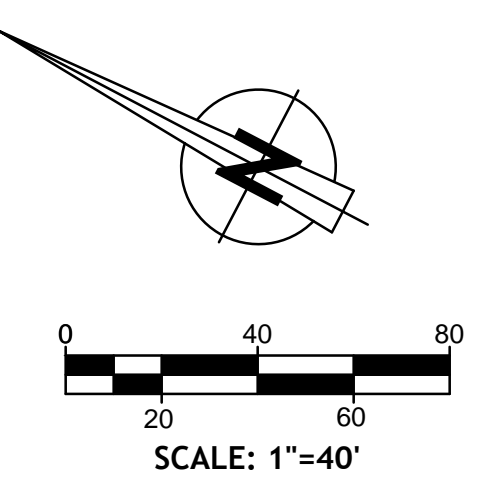
NOT ISSUED FOR CONSTRUCTION

MATCHLINE - SEE SHEET CX102

SURVEY DISCLAIMER
 THE INFORMATION SHOWN HEREON IS FOR INFORMATION ONLY AND IS NOT A SUBSTITUTE FOR THE ACTUAL SURVEY PREVIOUSLY REFERENCED. LONG ENGINEERING, INC. ASSUMES NO RESPONSIBILITY FOR ITS ACCURACY OR COMPLETENESS. ALL INTERPRETATIONS OR CLARIFICATIONS SHALL BE MADE DIRECTLY BY THE SURVEYOR. THE CONTRACTOR SHALL VERIFY ALL EXISTING CONDITIONS AFFECTING THE WORK UNDER THIS CONTRACT.

UTILITY DISCLAIMER
 THE CONTRACTOR IS RESPONSIBLE FOR THE VERIFICATION OF ALL UTILITIES PRIOR TO BEGINNING CONSTRUCTION TO AVOID CONFLICTS WITH PROPOSED CONSTRUCTION. UTILITIES SHOWN ON THESE PLANS ARE BASED ON VARIOUS SOURCES AND MAY NOT BE RELIED UPON AS BEING ACCURATE OR COMPLETE. THE CONTRACTOR IS RESPONSIBLE FOR CALLING THE UTILITIES PROTECTION CENTER, INC. AT 811 (1-800-282-7411) AT LEAST 48 HOURS PRIOR TO EXCAVATING ACTIVITIES TO HAVE ALL UTILITIES MARKED WITHIN AND ADJACENT TO THE WORK AREA. IT IS THE RESPONSIBILITY OF THE CONTRACTOR TO RELOCATE ALL UTILITIES THAT ARE IN CONFLICT WITH PROPOSED IMPROVEMENTS SHOWN ON THESE PLANS.

* NOTE: EXISTING FEATURES SHOWN ON THIS SHEET ARE NON-SCREENED FOR CLARITY PURPOSES



REV #	DATE	DESCRIPTION	REQUESTED BY

2550 HERITAGE COURT, STE 250
 ATLANTA, GA 30339
 TEL 770.951.2495, FAX 770.951.2496
 www.oneatlas.com

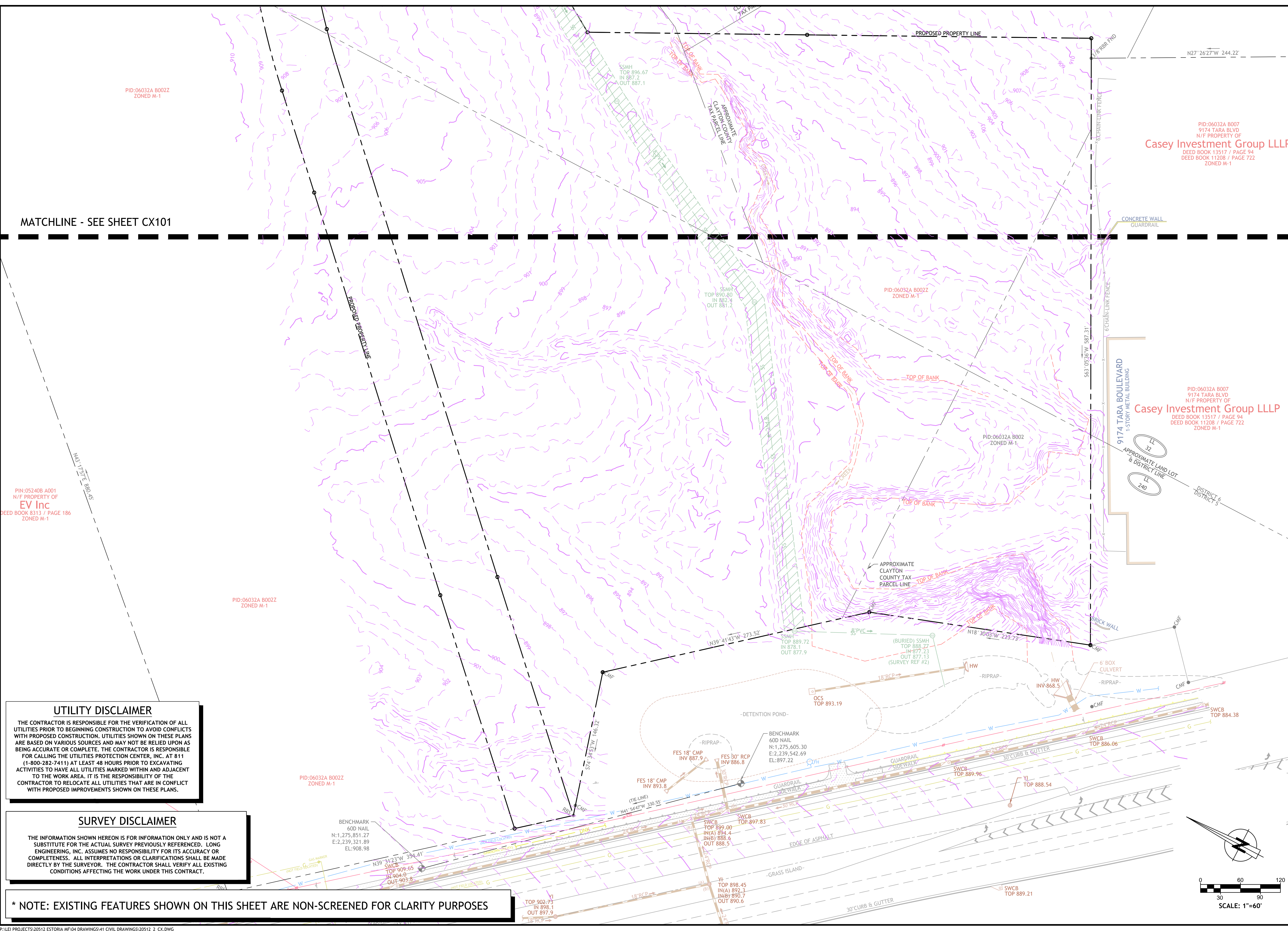


ESTORIA MULTIFAMILY
 294 S MAIN ST
 JONESBORO, GA 30236
 DISTRICTS 5, 6
 GEORGIA
 EXISTING CONDITIONS

DATE	DESIGN QC	CADD QC	DESIGNED BY	DRAWN BY
04/03/2026				

SHEET
CX102

ATLAS #20512
 NOT ISSUED FOR CONSTRUCTION



MATCHLINE - SEE SHEET CX101

UTILITY DISCLAIMER
 THE CONTRACTOR IS RESPONSIBLE FOR THE VERIFICATION OF ALL UTILITIES PRIOR TO BEGINNING CONSTRUCTION TO AVOID CONFLICTS WITH PROPOSED CONSTRUCTION. UTILITIES SHOWN ON THESE PLANS ARE BASED ON VARIOUS SOURCES AND MAY NOT BE RELIED UPON AS BEING ACCURATE OR COMPLETE. THE CONTRACTOR IS RESPONSIBLE FOR CALLING THE UTILITIES PROTECTION CENTER, INC. AT 811 (1-800-282-7411) AT LEAST 48 HOURS PRIOR TO EXCAVATING ACTIVITIES TO HAVE ALL UTILITIES MARKED WITHIN AND ADJACENT TO THE WORK AREA. IT IS THE RESPONSIBILITY OF THE CONTRACTOR TO RELOCATE ALL UTILITIES THAT ARE IN CONFLICT WITH PROPOSED IMPROVEMENTS SHOWN ON THESE PLANS.

SURVEY DISCLAIMER
 THE INFORMATION SHOWN HEREON IS FOR INFORMATION ONLY AND IS NOT A SUBSTITUTE FOR THE ACTUAL SURVEY PREVIOUSLY REFERENCED. LONG ENGINEERING, INC. ASSUMES NO RESPONSIBILITY FOR ITS ACCURACY OR COMPLETENESS. ALL INTERPRETATIONS OR CLARIFICATIONS SHALL BE MADE DIRECTLY BY THE SURVEYOR. THE CONTRACTOR SHALL VERIFY ALL EXISTING CONDITIONS AFFECTING THE WORK UNDER THIS CONTRACT.

* NOTE: EXISTING FEATURES SHOWN ON THIS SHEET ARE NON-SCREENED FOR CLARITY PURPOSES