

DRAFT - MINUTES
TOWN OF JUNO BEACH
KAGAN PARK PLAYGROUND EQUIPMENT WORKSHOP

August 24, 2023

Council Chambers/Zoom
340 Ocean Drive

PRESENT: ALEXANDER COOKE, MAYOR
 PEGGY WHEELER, VICE MAYOR
 MARIANNE HOSTA, VICE MAYOR PRO TEM
 ELAINE K. COTRONAKIS, COUNCILMEMBER
 DD HALPERN, COUNCILMEMBER

ALSO PRESENT: DAVID DYESS, TOWN MANAGER
 ANDREA DOBBINS, PROJECT COORDINATOR/RISK MANAGER
 CAITLIN E. COPELAND-RODRIGUEZ, TOWN CLERK

ABSENT:
Audience: 12 (4 via Zoom)

Mayor Cooke called the Workshop to order at 3:00pm.

PRESENTATIONS

1. Advanced Recreational Concepts/Playspace Services (*Allen Cooke*) – (*See attached.*)
2. Kompan, Inc (*Katie Moffitt*) – (*See attached.*)

COMMENTS FROM THE PUBLIC

Public Comments were made.

ADJOURNMENT

Mayor Cooke adjourned the Workshop at 5:09pm.

Alexander Cooke, Mayor

Caitlin E. Copeland-Rodriguez, Town Clerk



Our Commitment to Craftsmanship

In today's mass produced world, the commitment to craftsmanship can fall by the wayside. Dedication and an unyielding determination are essential to creating a superior product.

At Playcraft Systems, craftsmanship is the cornerstone of our company. Building on a foundation of sustainable materials, innovative design and our state-of-the-art manufacturing techniques, we create playground equipment and playscape experience unmatched in the industry.

Our products set the benchmark for quality within our industry. This includes our highly durable powder-coat process, which starts with a complete phosphate wash of the component and then an entire layer of epoxy primer. We finish the component with a poly TGIC powder to create a total thickness of 11mils, an industry high.

In addition, our products meet or exceed the design and safety guidelines found in the ASTM F1487-17 and USCPSC publications for playground equipment designed for public use. Playcraft Systems is also a member of the International Play Equipment Manufacturers Association (IPEMA).



Quality Overview

Resilient Coatings:

- All metal is chrome sealed to enhance wear protection, reduce friction, and improve corrosion resistance.
- Every inch of metal is coated in primer, not just the weld.
- Metal is finished with (2) coats of durable poly TGIC powder for better curing and a total finish coat of 12 mil, the best in the industry.
- All decks and Play-Tuff™ components receive more than 125 mil of slip-resistant coating, the thickest in the industry.

Exceptional Plastics:

- We utilize advanced technology and materials to create durable, tough, plastic components.
- We offer exceptional quality in both rotationally molded and high-density polyethylene.
- Plastic parts manufactured with extra thick walls and colorfast materials for lasting durability and brilliance.
- Each plastic component is hand inspected for excellence.

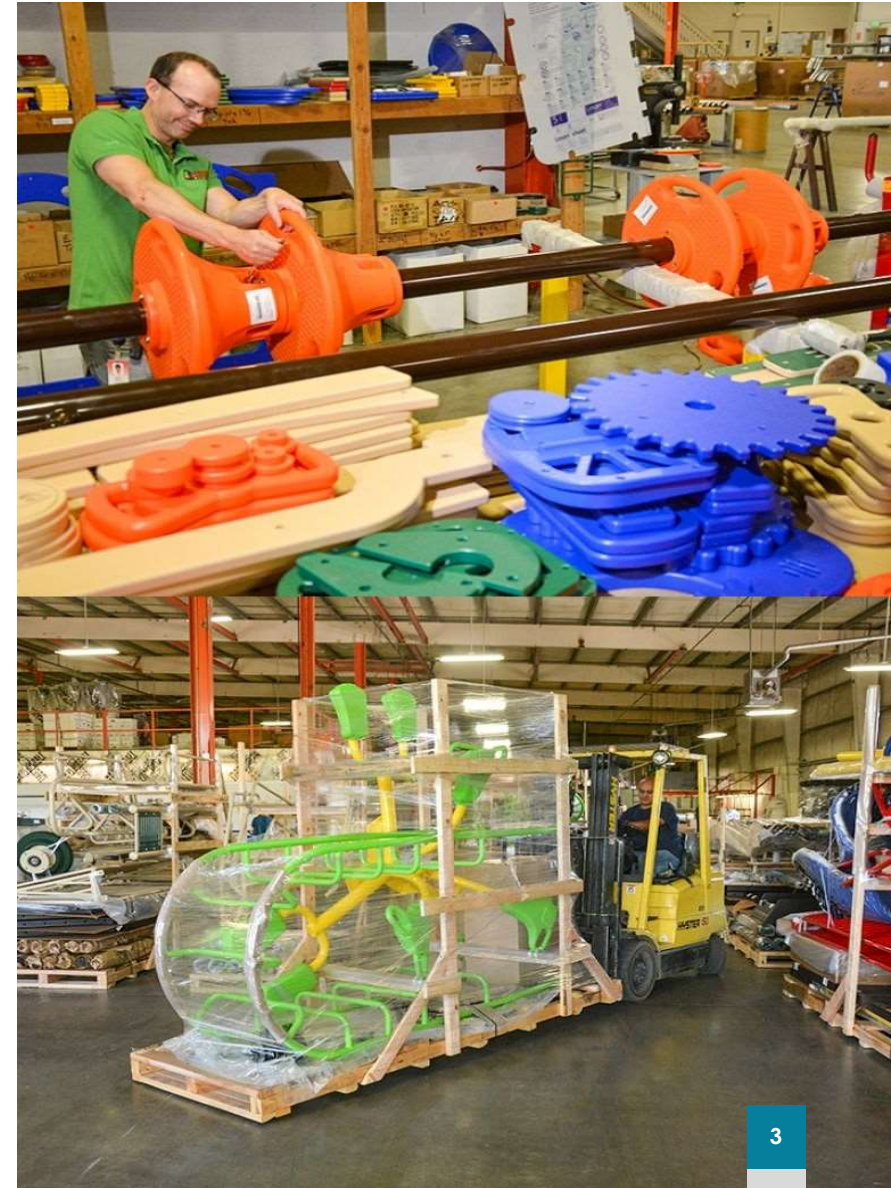
Quality Overview

Hand Finishing:

- Every part that leaves our factory is hand inspected by trained technicians. Our Custom Finishing Team inspects, hand-finishes, and mechanically files each connection before finish coating is applied.
- All post caps have a ring that wraps the post and self-seals to prevent moisture penetration and rust.
- All edges on plastic parts are rounded and inspected for comfort and safety.

Impeccable Shipping and Installation:

- Each new playground arrives in our custom packaging and shipping materials.
- Every playground features a detailed playground Owner's Manual custom crafted for your unique playground system.
- Our proprietary King Clamp System is specifically engineered to ensure a smooth, stress-free, and compliant installation.
- Each playground includes stainless steel, tamper-resistant hardware.
- Playcraft's highly trained installers will flawlessly craft you play system to ensure years of community play.





Shade/Shelter Overview

Shades and shelters are important throughout your park setting to provide cool areas for children to relax. Whether the shade is over the playground equipment itself, or a picnic area for the family, these spots are a key element on any park design. This holds especially true in high sun/heat climates where equipment and surfacing materials may get hot after sitting in long duration of sunlight.

Your Playcraft Consultant will verify entry and peak heights to verify accurate clearance around the equipment and use zone boundaries if inside of a play area. They are built to last with one of the best warranties in the industry. Shades and shelters come in a wide range of styles, colors and shapes to fit your park's need.

Industry Leading Warranty

Every product we manufacture is designed with quality, safety, and value in mind. Every project we undertake is an opportunity to prove that Playcraft Systems is setting a new standard and raising the bar on quality and play expectations... one playground at a time.

Some of the key callouts of our warranty include:

- Lifetime warranty on all posts and hardware
- 15 year warranty on all metal rails, steel decks, HDPE plastics and rotationally molded plastics.
- 10 year warranty on all shade canopy fabric and Play-Cord™.
- 5 year warranty on powder-coating against cracking **(exclusive to the industry)**

PLAYCRAFT SYSTEMS WARRANTY

Playcraft Systems®, warrants its products to be free from defects in materials or workmanship, when properly used, serviced and installed in accordance with published specifications, for a period of one (1) year from the original date of invoice.

Playcraft Systems® further warrants as follows:

LIFETIME LIMITED WARRANTY

on all stainless steel hardware, metal posts, aluminum posts, aluminum caps and aluminum clamps against structural failure due to natural deterioration or corrosion, or defects in materials or workmanship.

TWENTY-FIVE (25) YEAR LIMITED WARRANTY

on all cast aluminum Spring Rider castings against structural failure due to defects in materials or workmanship.

FIFTEEN (15) YEAR LIMITED WARRANTY

on all metal rails, metal slides, handles, rungs, loops and walls, all Play-Tuff™ coated perforated steel decks, steps, and bridges, all rotationally molded and HDPE sheet plastic components, excluding recycled plastic components, against structural failure due to defects in materials or workmanship.

TEN (10) YEAR LIMITED WARRANTY

on all shade canopy fabric made of UV Stabilized HDPE monofilament yarn and tape against significant fading.

TEN (10) YEAR LIMITED WARRANTY

on all Play-Cord™ against cable breakage and Play-Cord™ connectors against breakage and failure due to defects in materials or workmanship.

FIVE (5) YEAR LIMITED WARRANTY

on all Playcraft System® powder coating against cracking and/or peeling due to normal climatic exposure.

THREE (3) YEAR LIMITED WARRANTY

on all springs, moving swing parts, swing seats and other swing components, as well as all recycled plastic components against failure due to defects in materials or workmanship.

ONE (1) YEAR LIMITED WARRANTY

on any other product or part not specifically covered above against failure due to defects in materials or workmanship.

All warranties above commence on the date of the original invoice from Playcraft Systems®. For the purpose of this warranty, the term LIFETIME encompasses no specific number of years, but rather that Playcraft Systems® warrants to its original customer, for as long as the original customer owns the Products and uses the Products for their intended purpose, that any Products and all components will be free from defects in materials or workmanship.

The warranty stated above is valid only if the products and finishes: (1) are assembled and installed in conformity with the layout plan and installation instructions furnished by Playcraft Systems®; (2) have been maintained and inspected in accordance with Playcraft Systems® maintenance information and other normal and prudent practices; (3) have been subjected to normal use for the purpose for which the products were designed and intended; (4) have not been subjected to misuse, abuse, vandalism, accident or neglect; (5) have not been altered in any manner including, but not limited to, incorporating unauthorized or unapproved parts; and (6) have not been modified, altered, or repaired by persons other than Seller's designees in any respect which, in the judgment of Seller, affects the condition or operation of the equipment.

This warranty does not cover: (1) cosmetic damages or defects resulting from scratches, dents, marring, rough handling, improper installation methods, fading, discoloring or weathering; (2) damage due to extreme or prolonged exposure to "Environmental Factors", such as wind-blown sand, salt water, salt spray and airborne emissions from industrial sources (sulfur, acids, chemicals, or corrosive agents, other than normal photochemical smog); (3) damage caused by environmental hazards and "Acts of God", such as hail, flooding, lightning, tornadoes, sandstorms, earthquakes, windstorms, and other extreme weather conditions; or (4) normal wear and tear. No warranty is made with regard to gloss retention or uniformity of gloss and color retention. If any products covered by this warranty fail within the time period applicable to a defective product, Playcraft Systems® shall, upon being notified of the defect in writing, at its sole option, either repair the defective products or replace the defective products within 30 days of receipt of the written notification.

Repair or replacement as provided in this section shall be the purchaser's exclusive remedy and purchaser expressly agrees that Playcraft Systems® shall not be responsible for any other damages, losses, or costs, including consequential and incidental damages, claimed by purchaser. Playcraft Systems® shall deliver the repaired or replacement products to the purchaser free of charge, but shall not provide labor, reimbursements for labor or reimburse any other costs associated with the removal or disposal of the defective products and/or the installation of any replacement products. Notwithstanding the previous sentence, Playcraft Systems® shall not pay for any costs of shipping replacement parts outside of the continental United States. Any products replaced or repaired consistent with this paragraph shall be guaranteed for the balance of the original warranty period.

THIS WARRANTY IS EXCLUSIVE AND IS IN LIEU OF ALL OTHER WARRANTIES, WHETHER EXPRESSED OR IMPLIED, INCLUDING BUT NOT LIMITED TO ANY WARRANTY OF MERCHANTABILITY OR FITNESS FOR A PARTICULAR PURPOSE. THE REMEDIES PROVIDED HEREIN SHALL BE THE EXCLUSIVE AND SOLE REMEDIES OF THE ORIGINAL PURCHASER. PLAYCRAFT SYSTEMS® IS NOT LIABLE FOR ANY SPECIAL, DIRECT, INDIRECT, INCIDENTAL OR CONSEQUENTIAL DAMAGES WHICH MAY ARISE FROM THE PURCHASE, USE OR MISUSE OF ITS PRODUCTS. SOME STATES DO NOT ALLOW THE EXCLUSION OF INCIDENTAL OR CONSEQUENTIAL DAMAGES, SO THIS EXCLUSION MAY NOT APPLY. PLAYCRAFT SYSTEMS® NEITHER ASSUMES NOR AUTHORIZES ANY OTHER PERSON TO ASSUME OR IMPLY ANY OTHER LIABILITY IN CONNECTION WITH THE SALE OR USE OF THE EQUIPMENT SOLD.

To make a claim under the terms of this warranty, purchaser must submit a written statement detailing the nature of the warranty claim, including an itemization of each defective condition, along with a copy of the original invoice, maintenance records and supporting photographs to Playcraft Systems®, 123 North Valley Drive, Grants Pass, Oregon 97526.

Due to our on-going commitment to product development and improvement, Playcraft Systems® reserves the right to change, modify or discontinue certain products without notice (Rev. 0).

Play Paths: Cosmic Voyage



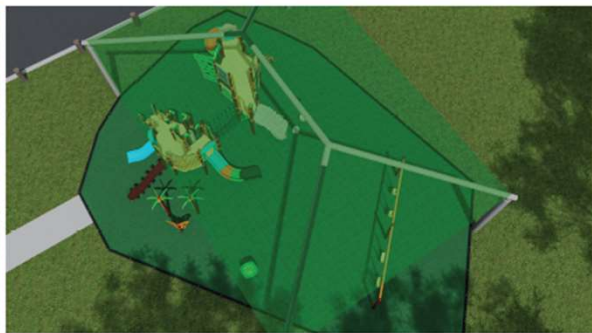
PLAYGROUND GRASS™
////////// ////////////

Other Competition

Outside of the main competitors, there are a few outliers that pop up here and there.

- U.S. Based
 - Leathers and Associates
 - Columbia Cascade
 - Kidstuff Playsystems Inc.
 - Play Mart
 - Superior Playgrounds
 - Website based (BYO, Playgroundequipment.com, APC, etc.)
- International
 - **Kompan**
 - Henderson
 - Hags
 - UltraPlay (U.S. based, Chinese equipment)
 - Qitele
 - Cemer
 - Blue Imp
 - Funlandia
 - iPlayCo



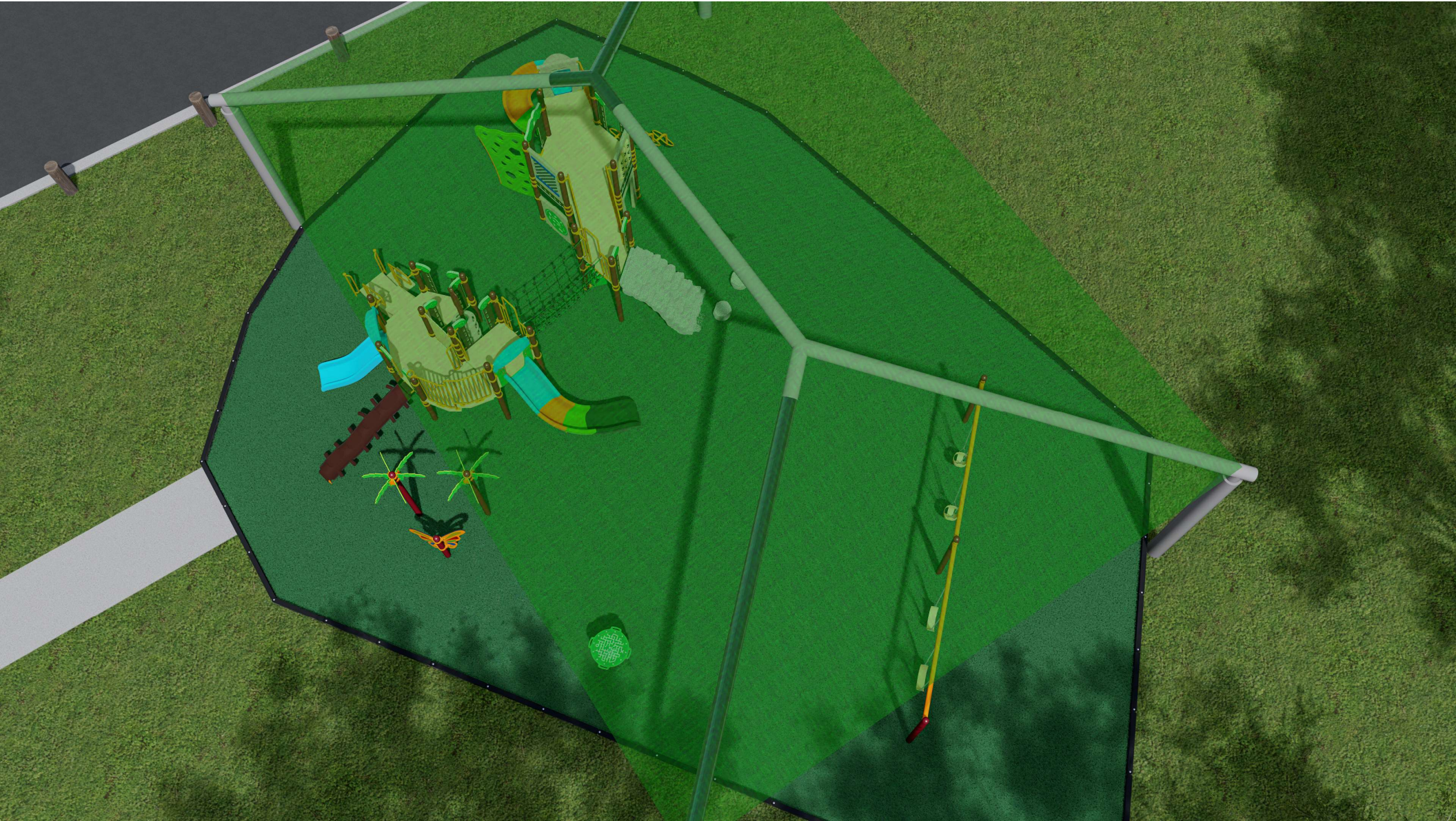








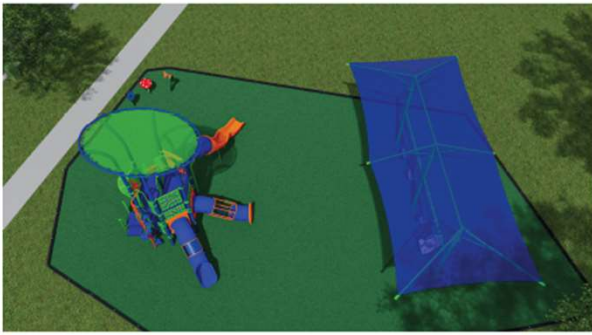






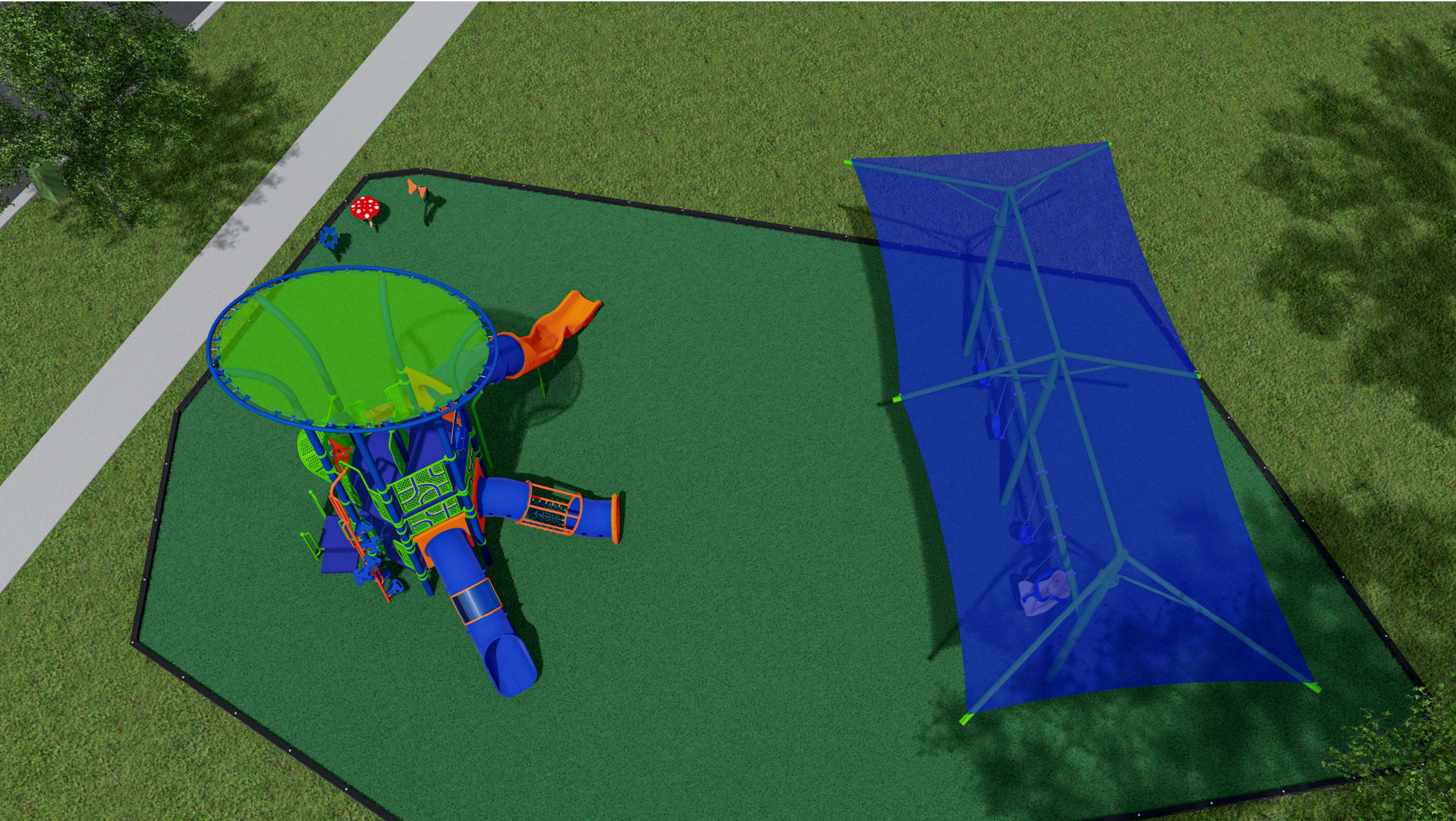
KAGAN PARK PLAYGROUND OPTION 2

System Type
R-5
For Ages
5-12





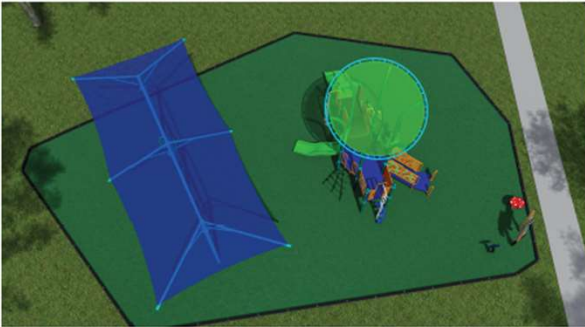




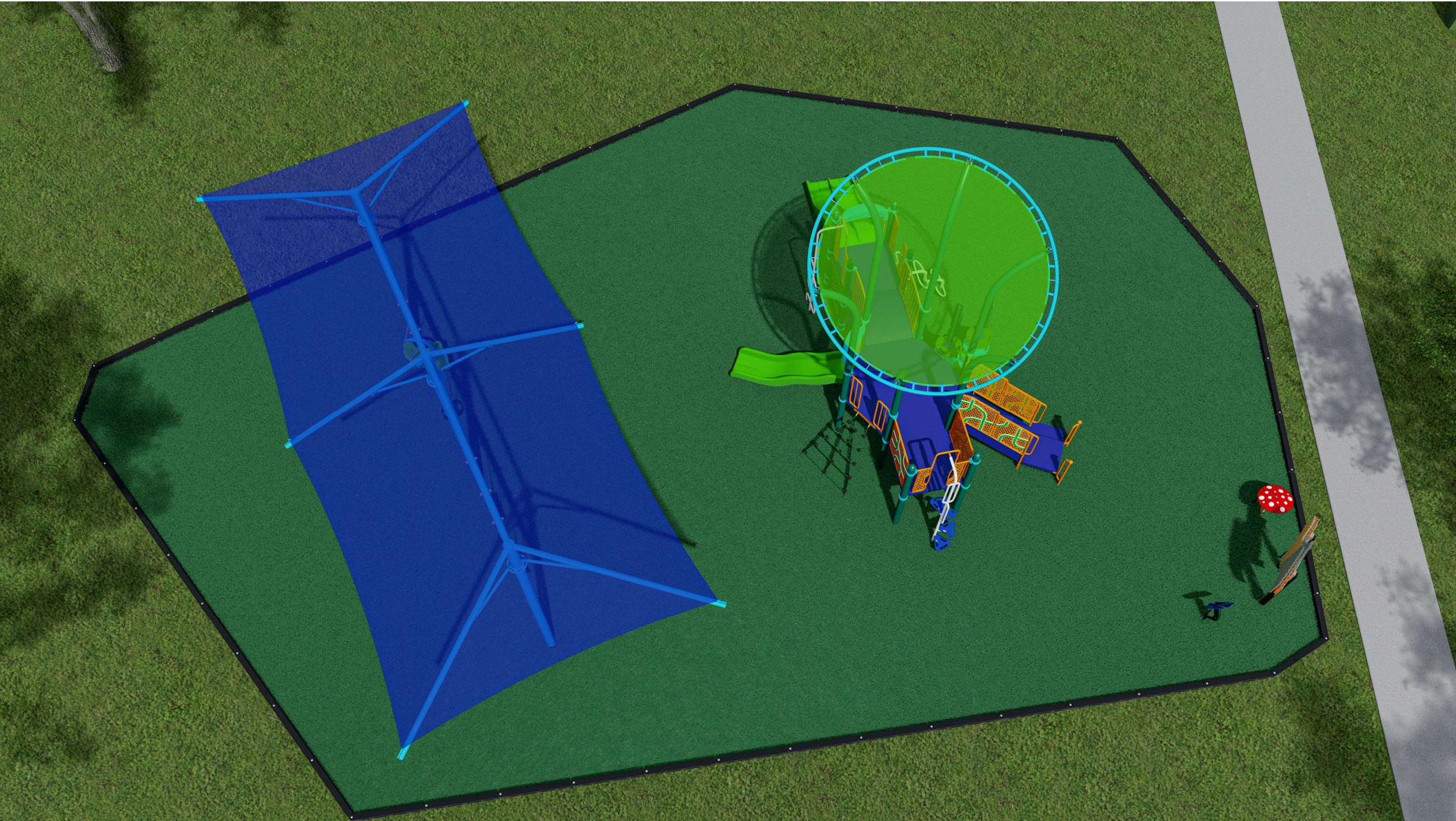


KAGAN PARK PLAYGROUND OPTION 1

System Type:
R-5
For Ages:
5-12











THANK YOU

www.playcraftsystems.com

KOMPAN®



Kagan Park Playground

Juno Beach, FL

KOMPAN
Let's play

Introduction



A healthy community needs a healthy heart. That heart can be the playground and fitness site within a community. The central meeting point for a broad community that mirrors the needs of those who use it, whether it is to socialize, play and develop, exercise, or just sit outdoors enjoying the fresh air and watch the next generation grow. Designing a playground is a very complex process that involves many different factors, and if thoughtfully and intentionally planned, the outcome will bless the community for generations to come. That is why at KOMPAN, we strive to build our local communities to be healthy in body and mind.

It is important to KOMPAN that the users of our playgrounds are safe, have fun, and feel socially included. KOMPAN's products are designed to stimulate children's development physically, intellectually, socially, cognitively, and emotionally. KOMPAN is a member in good standing of the International Playground Equipment Manufacturer's Association (IPEMA). Through IPEMA's third party validator TÜV, SÜD, IPEMA certification assures compliance of our play equipment to ASTM F1487 for the US and CSA Z614 for Canada. KOMPAN Outdoor Fitness equipment is compliant to ASTM F3101. All equipment manufactured by KOMPAN is to ISO 140001 requirements. The sustainability credentials of our products are verified by Bureau Veritas.

I look forward to delivering on your vision for the new playground in the Town of Juno Beach by creating a beautiful and thoughtful design that represents the community it will serve, while providing maximum play value, challenge, and fun for the children using it.

Sincerely,

For and on behalf of KOMPAN Ltd.
Katie Moffitt
Principal Sales Representative and Consultant,
Email: KatMof@Kompan.com
Tel: 561-427-3619



About KOMPAN



- Established in 1970, KOMPAN has more than 50 years of experience in designing, manufacturing and installing outdoor playgrounds and fitness sites all over the world – every day striving to deliver high quality playgrounds and fitness sites that provide outstanding performance and bring communities together.
- Today, KOMPAN is the GLOBAL leader in outdoor play and fitness solutions.
- KOMPAN supports quality of life and helps develop healthier communities by creating the most well-designed, innovative, sustainable and durable playgrounds and fitness site solutions available
- KOMPAN solutions support the development of physical activity, learning, and social inclusion for all ages and for all abilities
- KOMPAN aims to operate in a way that not only respects but also contributes to the positive development of people and the environment
- US Headquartered in Austin, Texas



KOMPAN
Country Office



KOMPAN
Manufacturing



KOMPAN
Design Studio



Kompan Sustainability Promise



Greener through
cutting carbon
emission

KOMPAN Sustainability

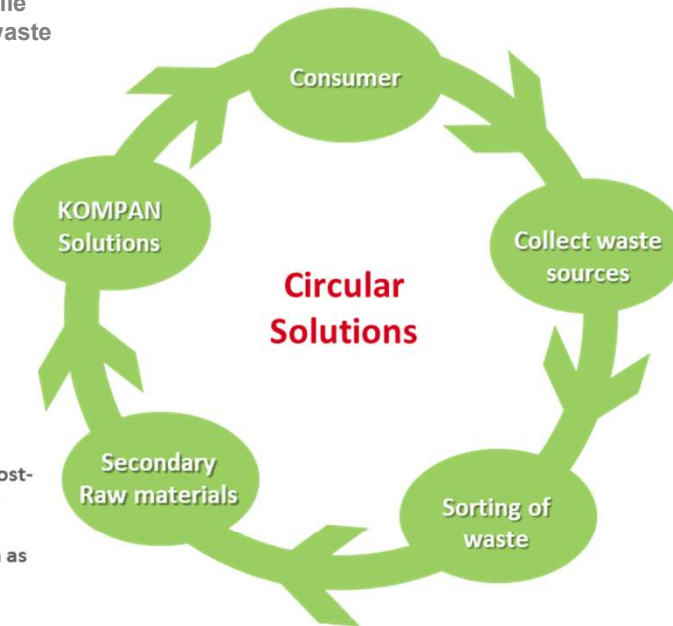
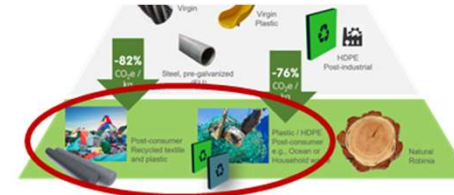
Meet Kompan's GreenLine!

GreenLine

Made Green: Post-Consumer Waste



TexMade™
Posts made in 100% Post-consumer recycled textile and plastic waste



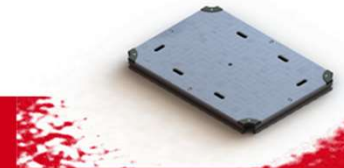
EcoCore™ HDPE sheets in 100% Post-consumer material in the core from e.g., food packaging waste



Components made in Post-consumer Ocean waste collected from the maritime industry, such as fishing nets, ropes and trawls



Decks made in Post-consumer Ocean recycled waste



Current Site Conditions

The current site is old, showing wear and rust, and has reached the end of its useful life.



Existing Design/Layout



Current Design, Site Condition, and Surfacing:

- Ages 5-12 Structure, Ages 2-12 Swings
- Simple design layout
 - Main Structure with various climbing activities, 1 curly slide, minimal to no ground-level play elements.
 - 2-Bay swing set with 2 belt seats and 2 infant bucket seats
 - Steel decks, railings, and components = LOTS of rust, frequent and expensive maintenance

Goals and Objectives for New Design

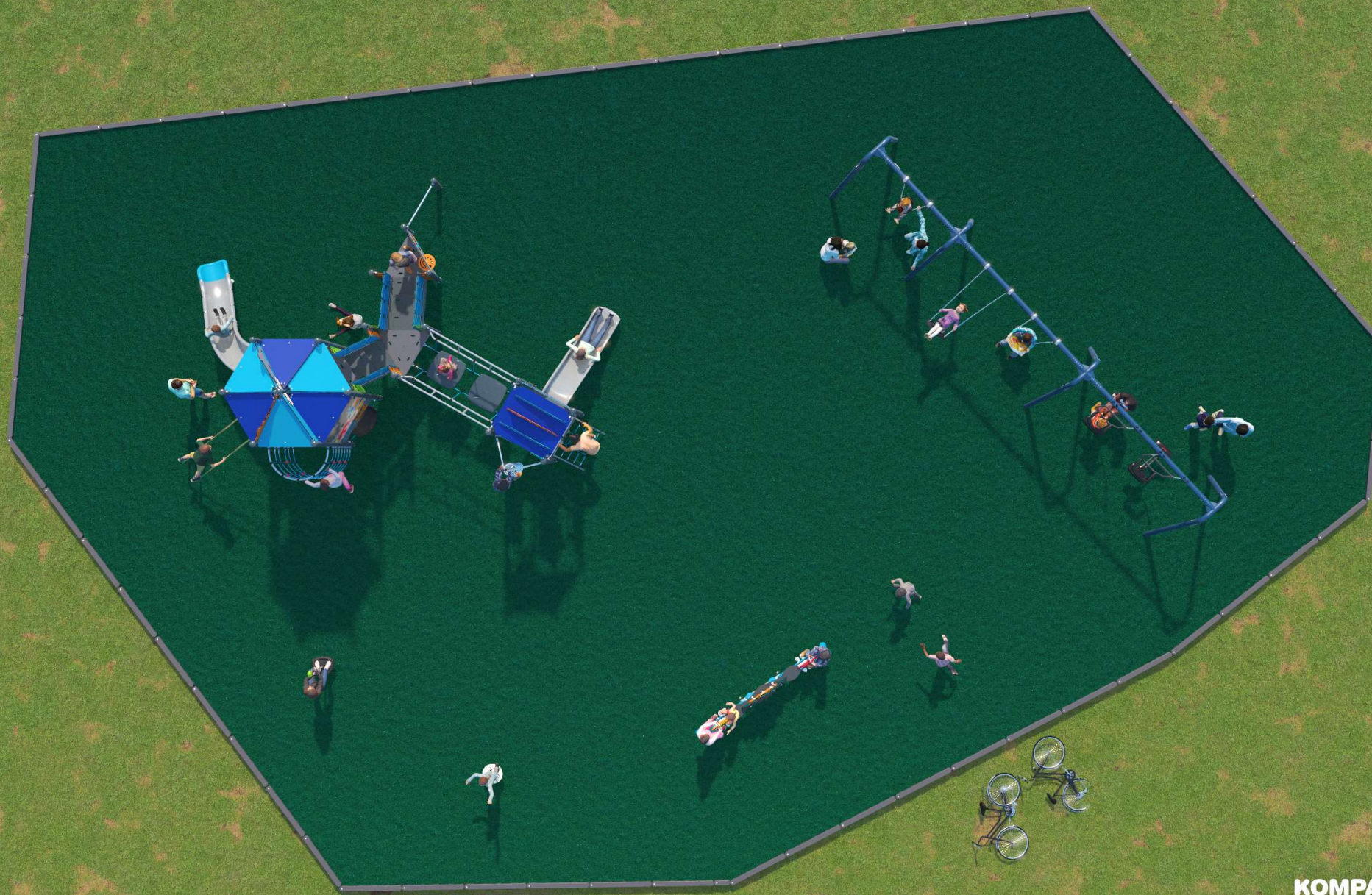


- Utilize existing location and footprint
- Broaden the play activities for ages 2-12
- Inclusion for all abilities through Kompan's Universal Design Principles
- Variety of activities with minimal duplication to ensure holding power, challenge, and graduated play.
 - Wow-Stay- Develop
- Incorporate equipment that allows children to play together or alone.
- Use of highest quality materials that will maximize the lifespan and reduce maintenance requirements and expense of this capital investment
- Represent the coastal identity of Juno Beach through use of custom equipment designs and proven-sustainable materials and manufacturing process. Custom equipment allows the community to express their love for our coastal lifestyle, while offering added play elements to the structure for more social, emotional, cognitive and imaginative play.
- A surfacing solution that is both safe, clean, and lower maintenance.
- Create an aesthetically cohesive design that compliments the Town's new adjacent fitness area
- Deliver a **UNIQUE**, fun, and exciting playground that will serve generations to come

- **Make this YOUR playground!**



Proposed New Design



Proposed New Design

TexMade Posts

KOMPAN!
Let's play



KOMPAN!
Let's play

Proposed New Design

Alternate using Power Coated Galvanized Steel Posts- Color Matched to Fitness Area

KOMPAN[®]
Let's play



KOMPAN[®]
Let's play

Proposed New Design

TexMade Posts

KOMPAN!
Let's play



Kagan Park Playground Option 1

KOMPAN!
Let's play

Proposed New Design

Galvanized, Powder-coated Steel Posts- Color Matched to New Fitness Equipment

KOMPAN!
Let's play



Kagan Park Playground Option 2

KOMPAN!
Let's play

Proposed New Design

TexMade Posts

KOMPAN!
Let's play



KOMPAN!
Let's play

Proposed New Design

Alternate using Power Coated Galvanized Steel Posts- Color Matched to Fitness Area

KOMPAN!
Let's play



KOMPAN!
Let's play

Proposed New Design

TexMade Posts

KOMPAN
Let's play



KOMPAN
Let's play

Proposed New Design

Alternate using Power Coated Galvanized Steel Posts- Color Matched to Fitness Area

KOMPAN!
Let's play



KOMPAN!
Let's play

Proposed New Design



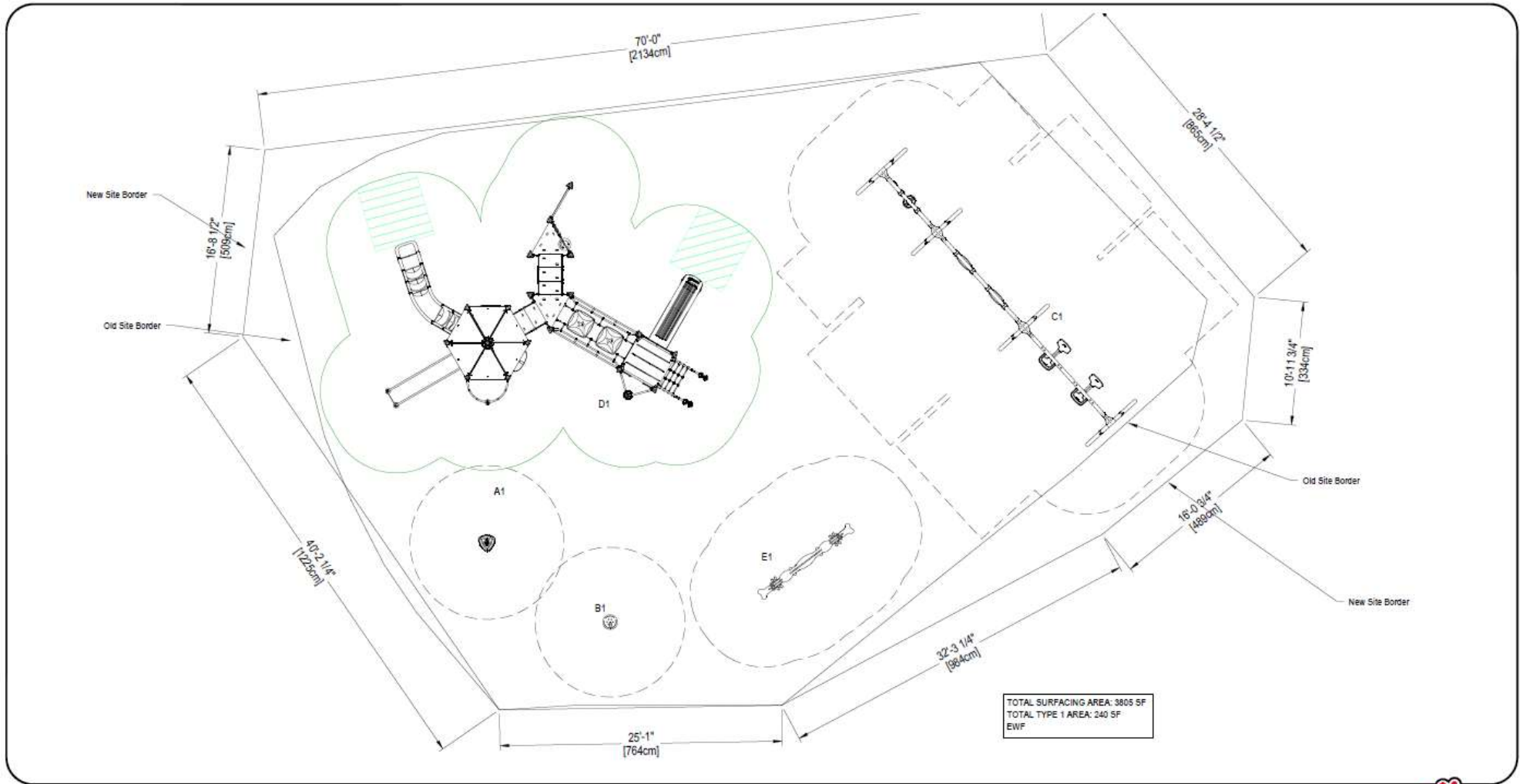
Proposed New Design



Proposed New Design



Proposed New Design



#	Product Number	Product Name	M.F.H.	Count
A	ELES0008-hx17DT	Spinner Plate	1' 2"	1
B	QXY8014XX-vx17	Spice 1	3' 2"	1
C	KSW25-CUSTOM_202 3736	Swing	7'11"	1
D	KMS9700088	Ocean Platform	9'1"	1
E	KMS9700089	Core Seesaw	3'3"	1

**Kagan Park
Playground**
10 Celestial Way,
Juno Beach, FL 33408
Site Plan Option 1



MANUFACTURER'S SHOP DRAWING:

FOR USE BY CONTRACTOR, ENGINEER, OR OTHER PROFESSIONAL OF RECORD. SEE SIGNED SALES PROPOSAL FOR COMPLETE TERMS TO BE ADHERED TO BY CONTRACTOR OR ENGINEER/ARCHITECT. CLEARANCE, PAINT, AND SCOPES WITH PLANNING DEPARTMENT OR PROJECT MANAGER PRIOR TO USE FOR REVIEW, PERMITTING, OR CONSTRUCTION.

TO BE READ CONJUNCTIVELY WITH COMPANY'S STANDARDS FOR SITE PREPARATION, MATERIALS AND INSTALLATION PROCEDURES, PREVENTATION OF EQUIPMENT DAMAGE, IN COMPLIANCE WITH SPECIFICATIONS TO COMPANY'S STANDARDS MUST SATISFY ALL REQUIREMENTS IN THE CLIENT'S CONTRACT.

PLAN IS CREATED AND ISSUED UNLESS NOTED FOR SURFACE MOUNT OPTIONS. THE CONTRACTOR REQUIREMENTS MAY BE UP TO 1/2" OF 2" MAX. PLANNING DEPARTMENT STANDARDS. CONTACT COMPANY FOR SPECIFIC PROJECT REQUIREMENTS. ALL COMPLETE ELECTRICAL SHOWN REQUIRES A SITE OWNER OR THE MANAGER IN WRITING. THE CONTRACTOR SHALL VERIFY ALL DIMENSIONS AND SPECIFICATIONS FOR EACH EQUIPMENT TO BE INSTALLED BY COMPANY'S STANDARDS.

DIMENSIONS OF PLAY AREA, USE AND OBSERVATION. LOCATION OF ALL EXISTING UTILITIES, EQUIPMENT AND SITE CONDITIONS SHALL BE FIELD VERIFIED PRIOR TO CONSTRUCTION.

PREPARED AND PRINTED IN USA BY KOMPAN © 2023 KOMPAN, INC. AUSTIN, TX, USA. 800-828-8888

SALES REPRESENTATIVE		SHEET	
REVIEW BY / DRAWN BY	DATE	K1.0	
DESIGN	08/15/23	REVISION NOTES	
REV. NO.	REV. BY	REV. DATE	
2	HerSec	08/17/23	

LAYOUT IS IN ACCORDANCE WITH ACP 907

Design Elements: Custom Ocean Triple Tower Wackle Bridge

Age Group: 4 - 12 years

KOMPAN[®]
Let's play



Design Elements: Custom Ocean Triple Tower Wackle Bridge

Age Group: 4 - 12 years

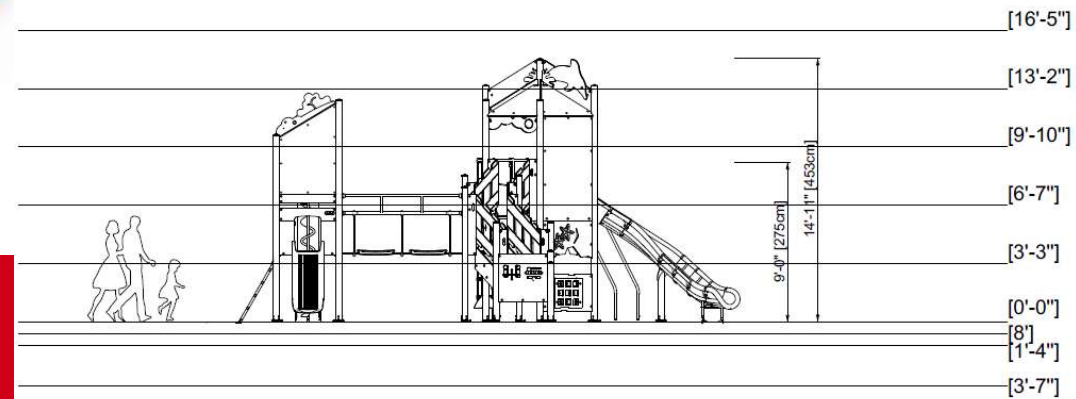
KOMPAN
Let's play



Design Elements: Custom Ocean Triple Tower Wackle Bridge

Age Group: 4 - 12 years

KOMPANI
Let's play



Design Elements: Custom Ocean Triple Tower Wackle Bridge

Age Group: 4 - 12 years



Wackle bridge

Physical: sense of balance and space, and training of posture. Important for being able to sit still.

Social-emotional: cooperation, turn-taking and friendly competition on the plates.



Tower net

Physical: the children have quick access up the horizontal rungs, and a slower climb up the sloping rungs. The net can be climbed from both sides, levelling the challenge of accessing the platform. Cross coordination and sense of space is supported, as well as arm and leg muscles.

Social-emotional: the two-sided net allows for social interaction. The size invites socializing.

Cognitive: logical thinking and planning when planning how best to enter the platform from the net.



Curly climber

Physical: coordination and proprioception are supported when placing arms and legs correctly for going down. Sense of balance when rotating. Arm muscles for holding tight.

Social-emotional: empathy stimulated by turn-taking.

Cognitive: logical thinking when placing arms and legs right for rotating downward.



Banister bars

Physical: coordination is supported when going down, as well as arm and core muscles. Landing strengthens bone density, which is built for life in childhood.

Social-emotional: turn-taking and risk-taking.



Timer

Social-emotional: teams can each have a button to measure rounds, wins etc. The buttons support cooperation and teamwork.

Cognitive: counting and registering supports thinking skills such as logical thinking and sequencing.

Creative: children can leave their mark, placing the timer in different positions.



Accessible stairway

Physical: climbing the accessible stairway is for everyone and supports cross coordination as well as arm and leg muscles. Young children develop skills for climbing stairs and alternating feet.

Social-emotional: room for active breaks and adult helpers. An inclusive space.



Hammock

Physical: coordination and sense of balance when swaying.

Social-emotional: meeting, pushing friends gently back and forth, turn-taking.

Cognitive: for toddlers cause and effect understanding.



Curved slide

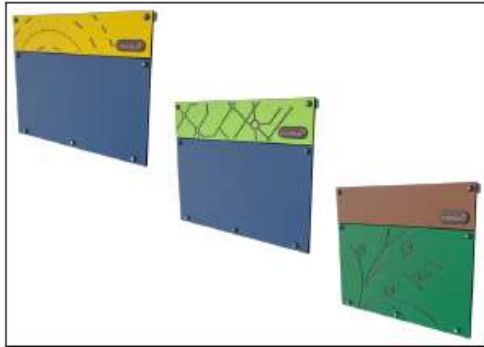
Physical: sliding develops spatial awareness and a sense of balance. Furthermore, the core muscles are trained when sitting upright going down.

Social-emotional: empathy stimulated by turn-taking.

Cognitive: young children develop their understanding of space, speed and distances when sliding down quickly.

Design Elements: Custom Ocean Triple Tower Wackle Bridge

Age Group: 4 - 12 years



Panels of 19mm EcoCore™. EcoCore™ is a highly durable, eco friendly material, which is not only recyclable after use, but also consists of a core produced from 100% recycled material.



All decks are supported by uniquely designed low-carbon aluminum profiles with multiple attachment options. The grey-colored molded decks are made of 75% post-consumer ocean waste PP material with a non-skid pattern and texture surface.



Main posts with hot dip galvanized steel footing are available in different materials: Pressure impregnated pine wood posts. Pre-galvanized inside and outside with powder coated top finish steel posts. Lead free aluminum with color anodized top finish or pressure impregnated pine wood posts.

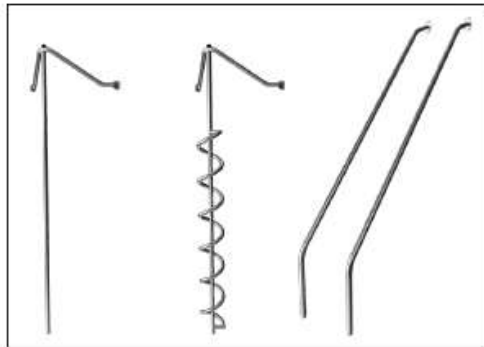
Item no. PCM310631-0901

Installation Information

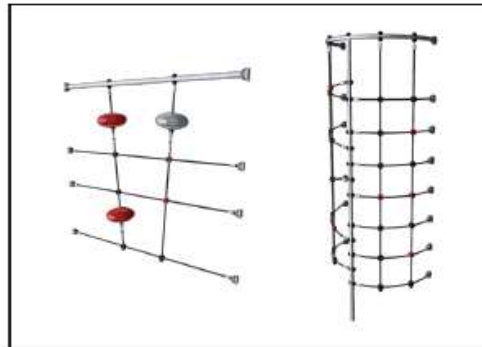
Max. fall height	9'1"
Safety surfacing area	913 ft2
Number of installers	2
Total installation time	41.5
Excavation volume	1.40 yd3
Concrete volume	0.09 yd3
Footing depth (standard)	2'9"
Shipment weight	2,892 lbs
Anchoring options	In-ground <input checked="" type="checkbox"/> Surface <input checked="" type="checkbox"/>

Warranty Information

EcoCore HDPE	Lifetime
PP Decks	10 years
Post	10 years
Ropes & nets	10 years
Spare parts guaranteed	10 years



The stainless-steel activities are made of high-quality stainless steel. The steel is cleaned by a total pickling process after manufacturing to ensure a smooth and clean gliding surfaces.



Ropes are made of UV-stabilized PES rope strands with inner steel cable reinforcement. The polyester wrapping is inductively melted onto each strand to ensure excellent wear and tear resistance.



KOMPAN GreenLine versions are constructed with the most environmentally friendly materials with the lowest possible CO2e emission factor. TexMade posts, EcoCore™ panels of 100% post-consumer recycled ocean waste, and molded PP decks.

Elevated activities 8	Accessible elevated activities	Accessible ground level activities	Accessible ground level play types
Present	5	2	1
Required	4	3	3

Sustainability Evaluation Comparison

Tex Made vs Galvanized Steel/ Powder-Coated Posts
Third-Party substantiated and independently verified sustainability.



SUSTAINABILITY



Validation of CO₂ calculation
BUREAU VERITAS
HSE Denmark A/S



CONFIDENTIAL

Material Type	Net Weight kg	% of Total	Virgin	Circular Economy Icons			Kg CO ₂ e
				Post Industrial Recycled	Post Consumer Recycled	End of Life Recyclable	
HDPE	421,9 kg	32 %	11 %	0 %	89 %	100 %	372,3 kg
TexMade	350,6 kg	27 %	0 %	0 %	100 %	100 %	188,3 kg
Steel/Metal	222,5 kg	17 %	50 %	25 %	25 %	100 %	604,5 kg
Plastic	157,7 kg	12 %	68 %	3 %	30 %	100 %	344,5 kg
Aluminium	74,7 kg	6 %	100 %	0 %	0 %	100 %	442,5 kg
Stainless Steel	50,6 kg	4 %	50 %	25 %	25 %	100 %	212,7 kg
HPL	19,2 kg	1 %	100 %	0 %	0 %	0 %	37,1 kg
Rope	10,7 kg	1 %	100 %	0 %	0 %	0 %	39,2 kg
Other	0,1 kg	> 0 %	100 %	0 %	0 %	0 %	0,8 kg
Total	1.308,0 kg	100 %	30,2 %	5,6 %	64,3 %	97,7 %	2.241,9 kg
Total Recycle Content: 70,2 %				Total: 1,71 kg CO ₂ e / kg			

SUSTAINABILITY



Validation of CO₂ calculation
BUREAU VERITAS
HSE Denmark A/S



CONFIDENTIAL

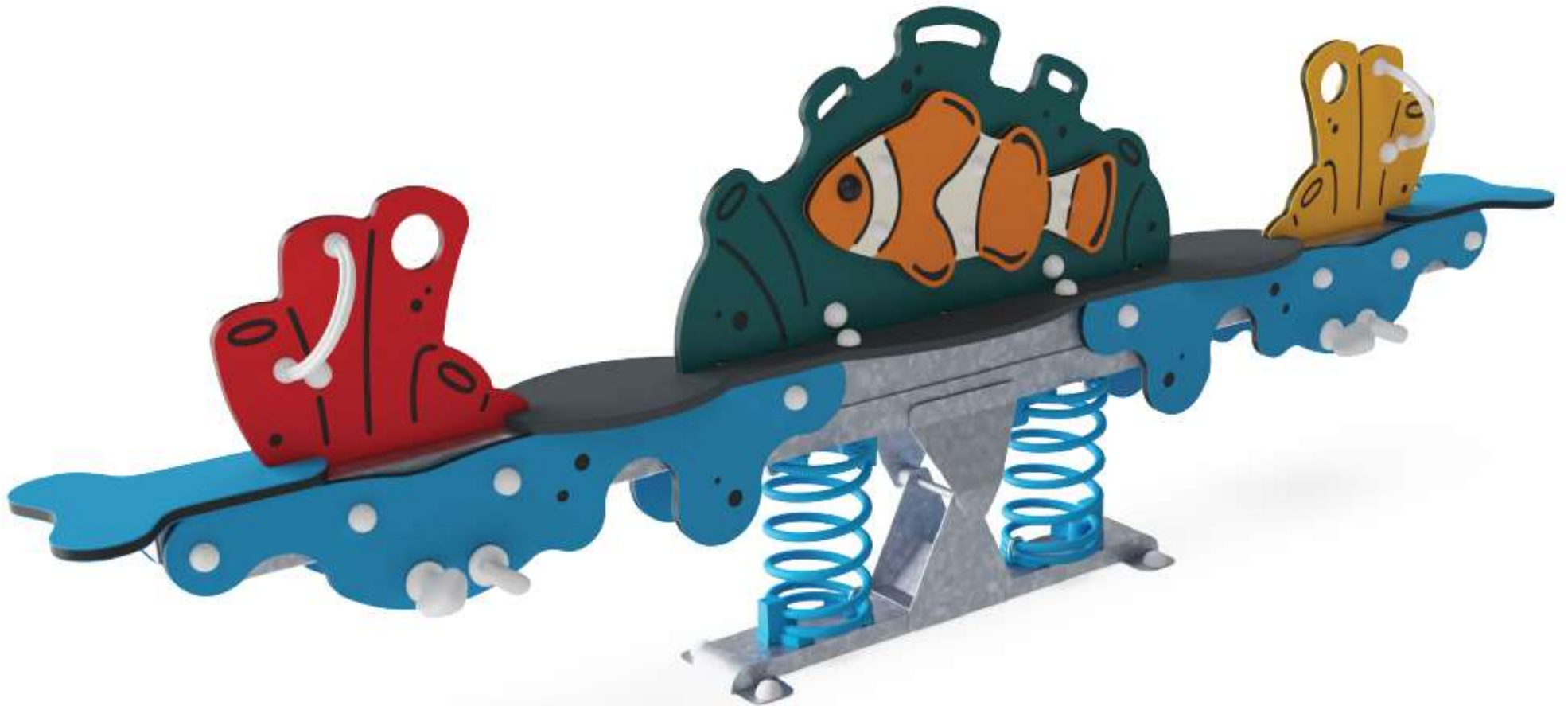
Material Type	Net Weight kg	% of Total	Virgin	Circular Economy Icons			Kg CO ₂ e
				Post Industrial Recycled	Post Consumer Recycled	End of Life Recyclable	
Steel/Metal	443,3 kg	41 %	50 %	25 %	25 %	100 %	1.356,5 kg
HDPE	302,0 kg	28 %	21 %	0 %	79 %	100 %	350,8 kg
Plastic	157,9 kg	15 %	68 %	3 %	30 %	100 %	346,6 kg
Aluminium	85,0 kg	8 %	100 %	0 %	0 %	100 %	479,4 kg
Stainless Steel	50,7 kg	5 %	50 %	25 %	25 %	100 %	213,1 kg
HPL	19,2 kg	2 %	100 %	0 %	0 %	0 %	37,1 kg
Rope	10,7 kg	1 %	100 %	0 %	0 %	0 %	39,2 kg
Other	0,1 kg	> 0 %	100 %	0 %	0 %	0 %	0,9 kg
Total	1.068,9 kg	100 %	49,8 %	12,0 %	38,3 %	97,2 %	2.823,6 kg
Total Recycle Content: 50,2 %				Total: 2,64 kg CO ₂ e / kg			



Design Elements: See Saw Springer

Age Group: 3+ years

KOMPAN
Let's play



Design Elements: See Saw Springer

Age Group: 3+ years



Rocking together

Social-emotional: the possibility of rocking together develops cooperation skills and consideration of others when rocking.



Handhold

Physical: the possibility to hold onto more areas of the handhold ensures a good grip, necessary for rocking intensely. This trains hand and arm muscles.



Theme

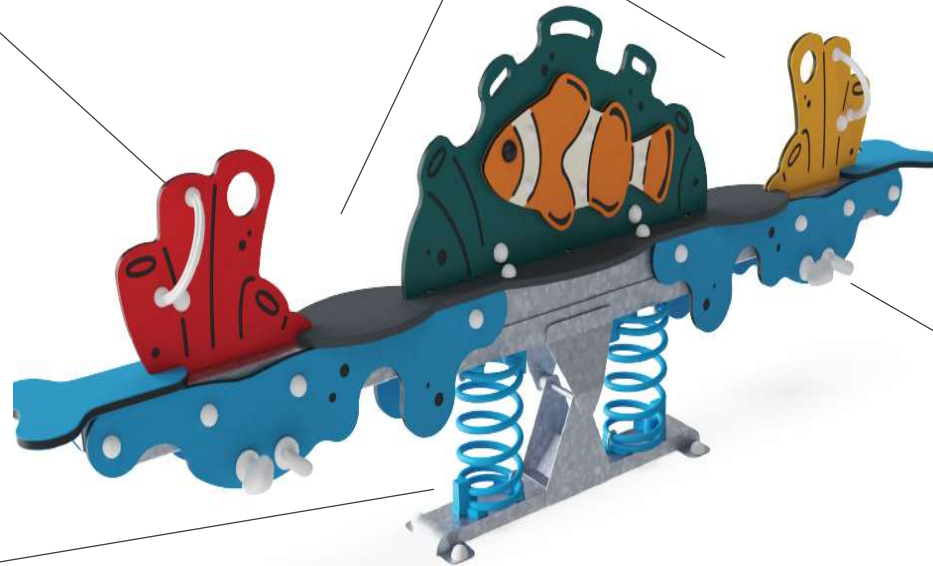
Cognitive: suggests a theme and supports dramatic play, which stimulates languages and communication skills.



Rocking spring

Physical: response to movement increases spatial awareness and sense of balance. These are fundamental motor skills that help the child's ability to sit still on a chair which takes a good sense of balance.

Cognitive: trains the understanding of cause and effect: when I move my body, the spring responds with movement.



Foot support

Physical: the possibility of footrest supports intense rocking. Rocking stimulates the senses of balance and space that are fundamental in managing the world securely.

Design Elements: See Saw Springer

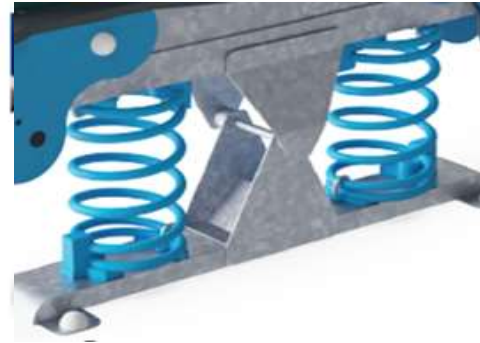
Age Group: 3+ years



Panels of 19mm EcoCore™. EcoCore™ is a highly durable, eco friendly material, which is not only recyclable after use, but also consists of a core produced from 100% recycled material.



KOMPAN Springs are made of high quality spring steel according to EN10270. The springs are cleaned by phosphating before they are painted with an epoxy primer and a polyester powder coating as top finish. The springs are fixed by unique anti pinch fittings for maximum safety and long lifetime.

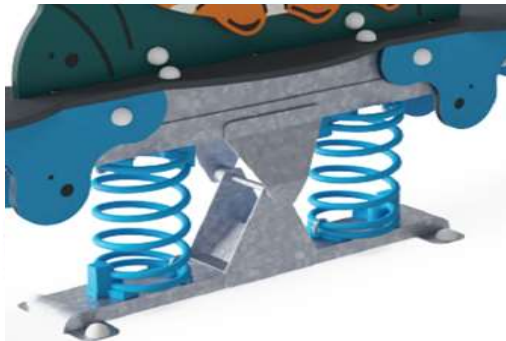


The springs are fixed by unique anti pinch fittings for maximum safety and long lifetime.

Item no. M18110-01P	
Installation Information	
Max. fall height	3'3"
Safety surfacing area	272 ft2
Number of installers	2
Total installation time	4.9
Excavation volume	0.55 yd3
Concrete volume	0.00 yd3
Footing depth (standard)	1'5"
Shipment weight	377 lbs
Anchoring options	In-ground <input checked="" type="checkbox"/> Surface <input checked="" type="checkbox"/>
Warranty Information	
EcoCore HDPE	Lifetime
Springs	5 years
HPL platform	15 years
Hot dip galvanized steel	Lifetime
Spare parts guaranteed	10 years



Handholds and footrests are made of injection moulded high quality nylon (PA6). PA6 has good wearing and impact strength.



The steel support posts are hot dip galvanized inside and outside with lead free zinc. The galvanization has excellent corrosion resistance in outside environments and requires low maintenance.



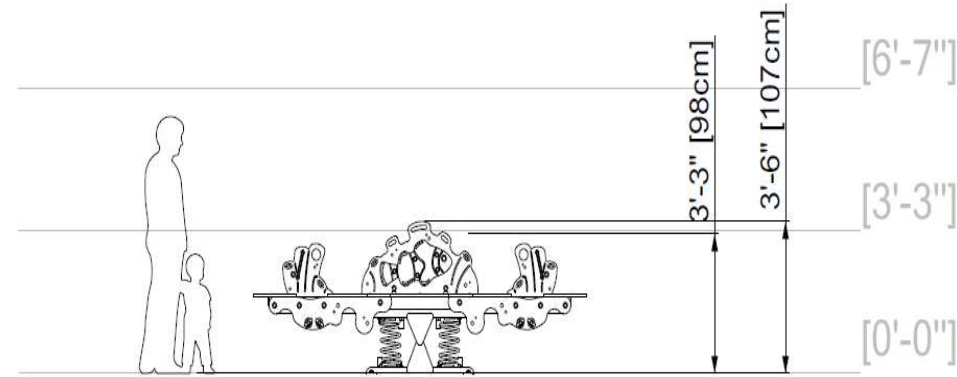
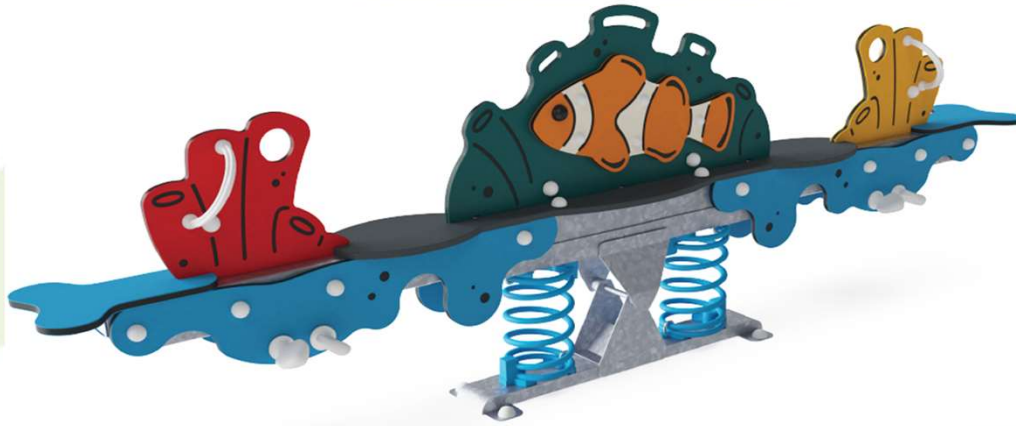
KOMPAN GreenLine versions are designed with the most environmentally friendly materials with the lowest possible CO2e emission factor such as EcoCore™ panels of 100% post-consumer recycled ocean waste.

Elevated activities 0	Accessible elevated activities	Accessible ground level activities	Accessible ground level play types
Present	0	1	1
Required	0	1	1



Design Elements: See Saw Springer

Age Group: 3+ years



Cradle to Gate A1-A3	Total CO ₂ emission	CO ₂ e/kg	Recycled materials
	kg CO ₂ e	kg CO ₂ e/kg	%
M18113-12P	308.10	2.28	48.60

The overall framework applied for these factors is the Environmental Product Declaration (EPD), which quantifies "environmental information on the life cycle of a product and enable comparisons between products fulfilling the same function" (ISO, 2006). This follows the structure and applies a Life-Cycle Assessment approach to the entire Product stage from raw material through manufacturing (A1-A3))



Design Elements: Spinner Plate

Age Group: 2 - 12 years



Panels of 19mm EcoCore™. EcoCore™ is a highly durable, eco friendly material, which is not only recyclable after use, but also consists of a core produced from 100% recycled material.

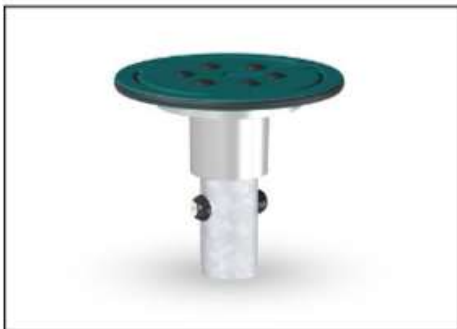


Heavy duty engineered bearing system with single row deep groove ball bearings with rubber seals. The fully closed bearing construction is lifetime lubricated and maintenance free. The bearing system has an integrated drag brake according to global safety standards.



The steel surfaces are hot-dip galvanized inside and outside with lead-free zinc. The galvanization has excellent corrosion resistance in outside environments and requires minimal maintenance.

Item no. Play360 5901299	
Installation Information	
Max. fall height	1'2"
Safety surfacing area	139ft²
Total installation time	1.4
Excavation volume	0.13yd³
Concrete volume	0.12yd³
Footing depth (standard)	1'12"
Shipment weight	33lbs
Anchoring options	In-ground ✓
Warranty Information	
EcoCore HDPE	Lifetime
Bearing construction	5 years
Hot dip galvanized steel	Lifetime
Spare parts guaranteed	10 years



KOMPAN GreenLine versions are designed with the most environmentally friendly materials with the lowest possible CO2e emission factor such as EcoCore™ panels of 100% post-consumer recycled ocean waste.



Elevated activities 0	Accessible elevated activities	Accessible ground level activities	Accessible ground level play types
Present	0	1	1
Required	0	0	0



Design Elements: Spinner Plate

Age Group: 2 – 12 years

SUSTAINABILITY



Validation of
CO₂ calculation

BUREAU VERITAS
HSE Denmark A/S



CONFIDENTIAL

Material Type	Net Weight kg	% of Total	Virgin	Post Industrial Recycled	Post Consumer Recycled	End of Life Recyclable	Kg CO ₂ e
Steel/Metal	8,0 kg	66 %	50 %	25 %	25 %	100 %	21,5 kg
HDPE	2,1 kg	17 %	0 %	0 %	100 %	100 %	1,3 kg
Aluminium	1,7 kg	14 %	100 %	0 %	0 %	100 %	15,1 kg
Stainless Steel	0,2 kg	2 %	50 %	25 %	25 %	100 %	0,7 kg
Plastic	0,1 kg	1 %	100 %	0 %	0 %	100 %	0,7 kg
Total	12,1 kg	100 %	48,8 %	16,9 %	34,3 %	100,0 %	39,3 kg

Total Recycle Content: 51,5 %

Total: 3,29 kg CO₂e / kg

Design Elements: Spica

Age Group: 5+ years

KOMPAN



Curved pole

Physical: more gripping or leaning support points when standing, sitting, hanging holding tight and spinning.



Toothy top

A universal design signal for twisting, turning



Triangle seat

Social-Emotional: turn-taking, cooperation, socializing



Internal ball-bearing spinner

Cognitive: logical thinking, figuring out how to make the spinner work with gravity, not against it.



Design Elements: Spica

Age Group: 5+ years



The Spica bearings are installed in a one-piece design bearing house with integrated drain holes for water passage. The two large steel bearings are fully closed and lifetime lubricated.



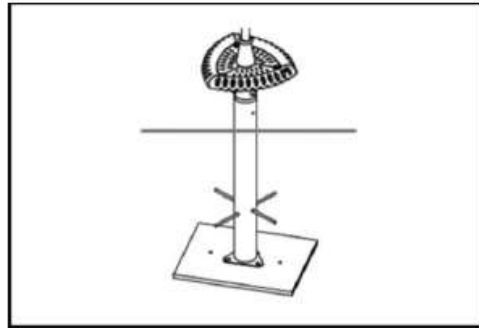
The unique GALAXY super triangle deck plate has an inner core of galvanized steel and soft outer layer of PUR rubber. The rounded edges has a non skid pattern for safe play.



The colored plastic top is made of injection molded high quality PA6 plastic which is UV stabilized to ensure long life time. The two component design is assembled with steel pins around the steel pipe.



The steel SURFACE is hot dip galvanized inside and outside with lead free Zinc according to global safety standards for playground equipment



In-ground Footing with large base plate and crossing steel pins secure stabile connection to concrete base. The SPICA is also available for surface installation with expansion bolts.



All hardware connections are covered by unique two piece designed PA6 donuts. The base donut is curved to adapt the shape of the steel pipe and the do-nut cap covers and protect the bolt head.

Item no. GXY801421-3717	
Installation Information	
Max. fall height	3'3"
Safety surfacing area	146,6ft²
Numbers of Installers (persons)	2
Total installation time	2
Excavation volume	0,49 yd³
Concrete volume	0,39 yd³
Footing Depth (Standard)	2'11"
Shipment Weight	126
Anchoring options	In-ground ✓ Surface ✓
Warranty information	
Galvanized steel	10 Years
Solid Plastic	10 Years
Hardware	10 Years
Bearing construction	5 Years
Spare parts guaranteed	10 Years

Elevated Activities 0	Accessible Elevated Activities	Accessible Ground Level Activities	Accessible Ground Level Play Types
Present	0	1	1
Required	0	1	1



To verify product certification, visit www.ipema.org



Proposed New Design: 3 Bay Swing

Ages 2 – 12 years + Adult or Care Taker on Interactive You & Me Swing Seat

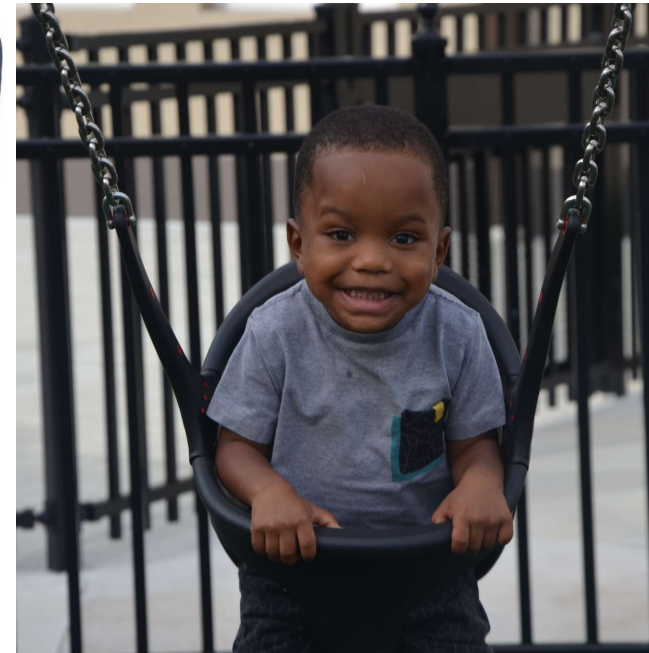
KOMPANI[®]
Let's play



Proposed New Design: 3 Bay Swing

Ages 2 – 12 years + Adult or Care Taker on Interactive You & Me Swing Seat

KOMPANI
Let's play



Molded Seats with hand guards



Proposed New Design: 3 Bay Swing

Ages 2 – 12 years

SUSTAINABILITY

Item No. KSW925-0910



Validation of
CO₂ calculation
BUREAU VERITAS
HSE Denmark A/S



CONFIDENTIAL

Material Type	Net Weight kg	% of Total	Virgin	Post Industrial Recycled	Post Consumer Recycled	End of Life Recyclable	Kg CO ₂ e
Steel/Metal	255,7 kg	91 %	50 %	25 %	25 %	100 %	779,3 kg
Aluminium	16,6 kg	6 %	100 %	0 %	0 %	100 %	66,7 kg
Stainless Steel	5,7 kg	2 %	50 %	25 %	25 %	100 %	24,1 kg
Plastic	1,8 kg	1 %	100 %	0 %	0 %	100 %	16,9 kg
Total	279,8 kg	100 %	53,3 %	23,4 %	23,4 %	100,0 %	887,0 kg
Total Recycle Content: 46,7 %				Total: 3,17 kg CO₂e / kg			

What's Next?



- **Choose Design Option:**
 - **TexMade vs PCG Steel Posts**
- **Place Order:**
 - **Sign and Return Sales Proposal with signed and approved custom renderings**
- **Lead Time:**
 - **Custom Equipment has a lead time of 16-18 weeks from Production to Delivery**



Warranty



Lifetime* Warranty

- Hot-Dip galvanized parts
- Stainless steel parts
- EcoCore™ and other high-density polyethylene (HDPE) parts

* KOMPAN's LIFETIME warranty is in effect for the lifetime of the product until the product is uninstalled and/or taken out of use. In addition, KOMPAN's general terms and delivery conditions apply and supplement this warranty.



15-Year Warranty

- High-pressure laminate (HPL) parts
- Aluminum parts



10-Year Warranty

- TexMade™ posts
- Pre-galvanized posts with painted top layer
- Painted surface on galvanized or aluminum metal parts
- Electrogalvanized metal parts
- Molded PP decks
- Solid plastic parts
- Hollow plastic parts
- Transparent Poly Carbonate (PC) parts
- Wood-plastic composite (WPC) parts
- Robinia, Siberian larch, pine, and other wood types
- Stainless Steel Slides
- Rope and net constructions



5-Year Warranty

- Resin coated plywood parts
- Springs and ball bearing assemblies
- Graphic print on transparent PC panels
- Concrete parts
- Galaxy Connection Balls



2-Year Warranty

- Moveable plastic & metal parts
- Rubber membranes
- Screens and electronic parts
- Sunshades & sail solutions

Warranty coverage

This warranty applies to KOMPAN's products and spare parts for the time periods described for each product type above and with the limitations described in this warranty. The warranty period applies from the date of purchase by the first customer. This warranty covers only defects in materials. KOMPAN's liability under this warranty is limited to repair or replacement of defective products, without charge, at KOMPAN's discretion. Defective electronic components will be delivered and changed by a KOMPAN ICON Professional installer free of charge.

Proper installation and maintenance

The warranty only applies if KOMPAN's products have been installed according to the instructions provided by KOMPAN and maintained correctly according to the KOMPAN Maintenance Manual. All warranty claims shall be accompanied by full documentation for proper installation and maintenance. The warranty for the ICON electrical components is dependent on those products being installed by an ICON-trained and approved installer.

Warranty exclusions

This warranty does not cover any damage caused by accident, improper care, negligence, normal wear and tear, surface corrosion on metal parts, discolored surfaces, and other cosmetic issues or failures due to misuse or vandalism. Natural changes in wood over time are considered cosmetic issues and not covered.

Near water installations

Products installed in direct contact with chlorinated water or saltwater (waterparks), or products installed within 650 feet from the shore are not covered by the KOMPAN warranty for any defects caused by corrosion. Specially designed products (handled via department for customized products), provided they have been upgraded to corrosion class C4 prior to delivery, installed within 650 feet from the shore (and not in direct contact with saltwater/spray of saltwater or chlorinated water(e.g. waterparks)) shall, subject to the applicable warranty period for each product type set out in the general warranty, be covered only against

structural failure caused by corrosion (excluding moving parts) and under no circumstances for any period longer than 5 years.

Third-party supplied products & services

KOMPAN provides non-KOMPAN branded products and installation services performed by certified third-party suppliers. This general KOMPAN warranty does not apply to such non-KOMPAN branded products and installation services, which may carry their own warranties. KOMPAN will pass on information on such warranties where possible.

Freight and warehousing

Global transport and logistics arranged by Kompan appointed forwarder. Products/items are not to be stored outside waiting for installation and must be kept dry at all times.

* KOMPAN's LIFETIME warranty is in effect for the lifetime of the product until the product is uninstalled and/or taken out of use. In addition, KOMPAN's general terms and delivery conditions apply and supplement this warranty.

Safety Standards

'In the interest of playground safety, the International Play Equipment Manufacturers Association (IPEMA) provides a Third Party Certification Service whereby a designated independent laboratory, TÜV SÜD America Inc., (TÜV), validates an equipment manufacturer's certification of conformance to the ASTM F1487 Standard Consumer Safety Performance Specification for Playground Equipment for Public Use, except sections 7.1.1, 10, 13.1.1, 13.1.2, 13.2, and 13.3; to CAN/CSA Z614 Children's Playspaces and Equipment, except clauses 10 and 11; or both. A list of current validated products and components may be viewed at www.ipema.org.'



Proposed New Design with TexMade Posts= \$106,181.00

Equipment Only, Includes Freight. Does NOT include Demo, Installation, Site Work, Drainage, Borders, Surfacing- To Be Provided by Safe 4 Play

KOMPAN!
Let's play



KOMPAN!
Let's play

Proposed New Design with PCG Steel Posts = \$106,365.30

Equipment Only, Includes Freight. Does NOT include Demo, Installation, Site Work, Drainage, Borders, Surfacing- To Be Provided by Safe 4 Play

KOMPAN
Let's play



KOMPAN
Let's play



City of Charlotte, NC
Contract Number: 2017001135

July 1, 2017 through June 30, 2022
Option to renew for two (2) additional two-year periods through June 30, 2026
RENEWED THROUGH June 30, 2024
RENEWED THROUGH June 30, 2026

KOMPAN

Playground Systems and Outdoor Fitness Solutions

KOMPAN is much more than the No. 1 supplier of innovative playground equipment. Our mission is to make communities happier and healthier through both play and fitness. At the KOMPAN Play Institute, we meticulously research the benefits of our designs on actual users and use real user feedback. Our playgrounds uniformly target cognitive and physical skills so that play is also educational and enriching. Through our surfacing and site amenities partnerships, we can provide you with products to compliment your playground that are as innovative and high quality as your new KOMPAN equipment.

Click Your Industry

Education | Government

Corporate | Enterprise

Real Estate

Private Equity

Public Sector

- K-12 Education
- Higher Education
- State & Local Government

KOMPAN products and solutions can be purchased at the guaranteed lowest competitively bid prices on a cooperative contract through OMNIA Partners. We commonly serve local government, including special districts, public and private schools and universities, state government municipalities and nonprofits. KOMPAN is proud to be a supplier partner of OMNIA Partners.

- **Playground and Outdoor Fitness Equipment, Site Accessories, Surfacing, and Related Products and Services**
City of Charlotte, NC | 2017001135

[VIEW CONTRACT DOCUMENTATION](#)

[CONTACT US](#)



Helpful Links for Equipment Demonstrations



[Greenline Sustainability information](#)

[Seesaw Springer](#)

[Spica](#)

[More Spica's](#)

[Mega Deck- Similar to Triple Tower](#)



KOMPAN  [®]
Let's play