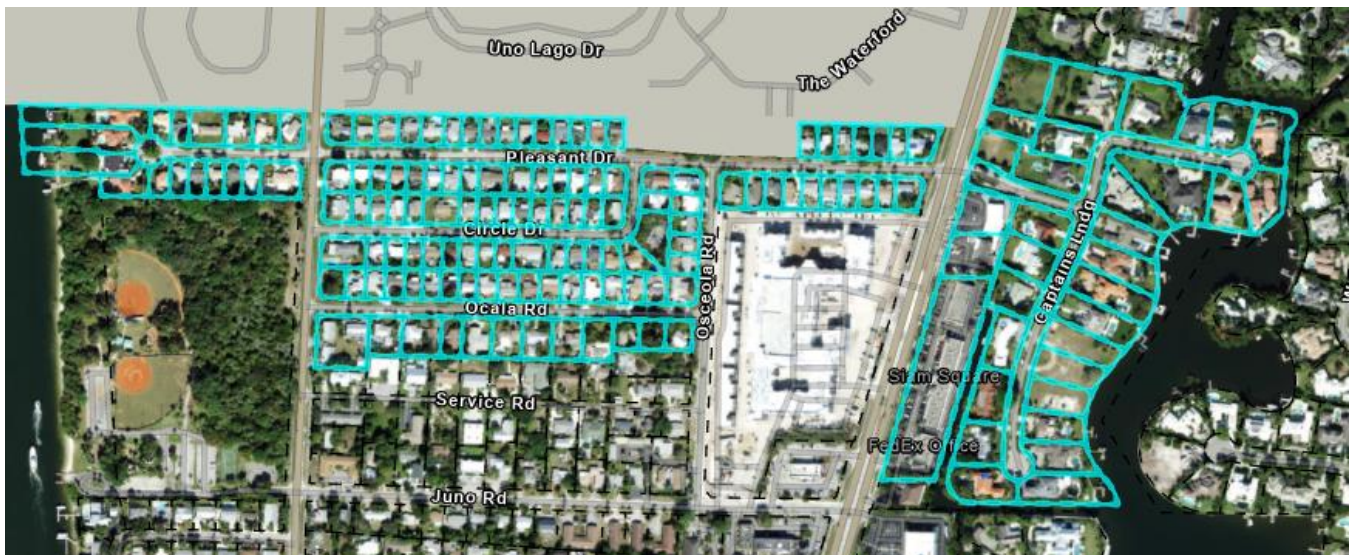




Meeting Name: Town Council Meeting
Meeting Date: October 25, 2023
Prepared By: D. Dyess
Item Title: Discussion on Annexation

DISCUSSION:

Staff have been evaluating the areas of consideration for annexation. The immediate areas for consideration are those that are up for an annexation vote by Palm Beach Gardens that are also within our future annexation area. After an initial review and discussions with some residents of these areas we reduced the initial annexation evaluation area to those properties highlighted in blue:



The primary consideration for the areas would be taxable revenue to the town versus service expense to the area. These areas are already established neighborhoods that could already be using our public facilities now (beaches, parks, etc.) without the town receiving the revenue benefit, so increased use of facilities is not really a factor.

Captains Key is a private association that maintains its own infrastructure. The estimated revenue to the town is \$105,904 from 25 homes and 31 parcels.

The area of Pleasant Ridge that was evaluated (in blue) has public infrastructure (roads, any sidewalks, lighting, etc.) that would need to be maintained by the Town. The estimated revenue is \$58,659 from 130 homes and 132 parcels.

The commercial along US1 is along a state highway that is maintained by the state and the inner portions of the plaza are maintained by the landowner. The estimated revenue of the three plazas is \$14,233.

RECOMMENDATION:

The council should discuss the three areas and give staff feedback on the annexation of these areas.