

**SUGGESTED OPTION 1 FOR FOOD TRUCK PLACEMENT-
THE THREE PARKING SPACES DIRECTLY IN FRONT OF
THE PUBLIC BATHROOMS- ISOLATES PEDESTRIAN
TRAFFIC FROM VEHICLE TRAFFIC**



**1 FOOD TRUCK AND 1 BEVERAGE TRUCK
CENTRALLY LOCATED AND TUCKED SO THAT
PEDESTRIAN TRAFFIC DOESN'T AFFECT FLOW OF
TRAFFIC**



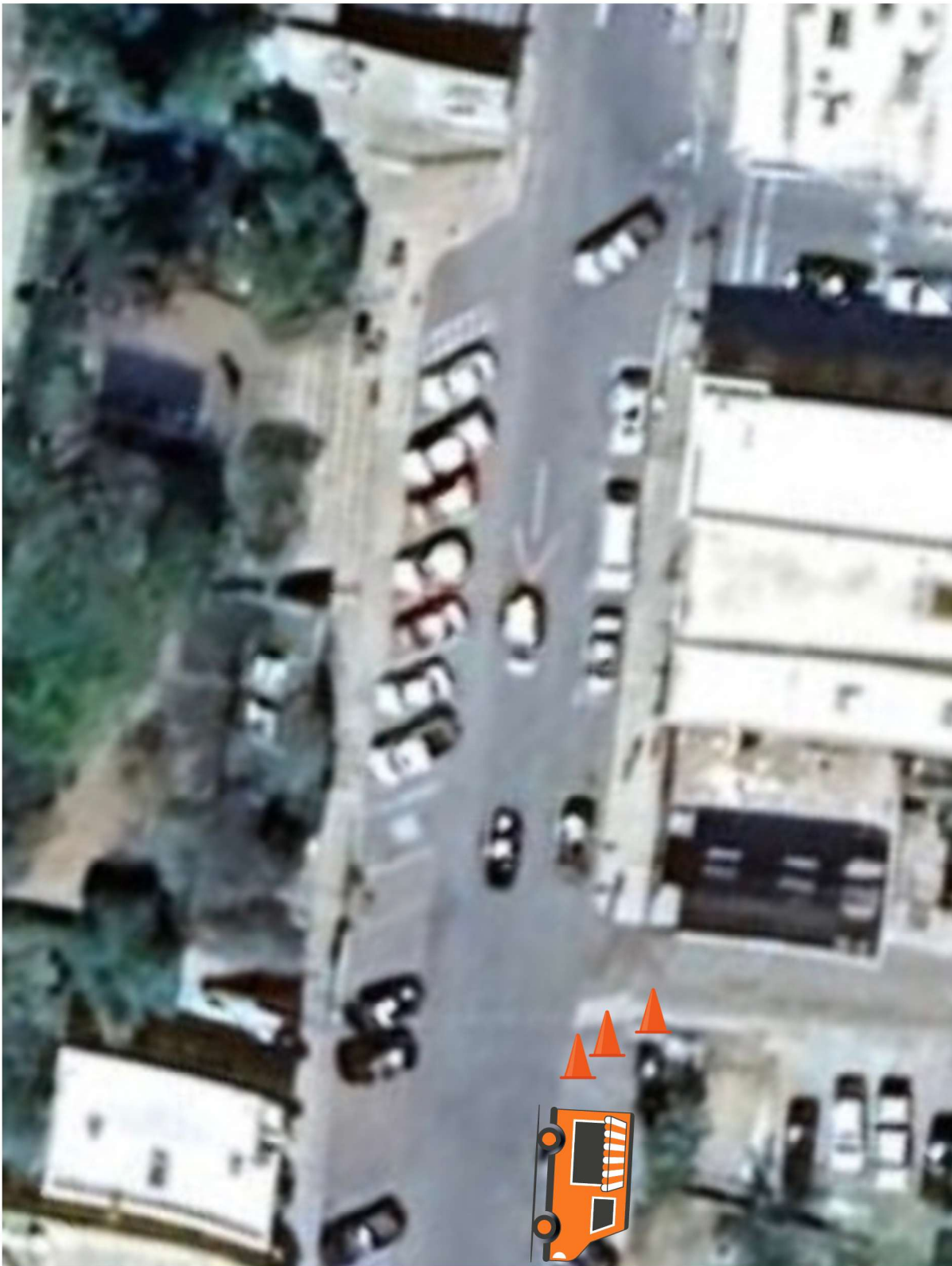
SUGGESTED FOOD TRUCK PLACEMENT OPTION 2-
-BEVERAGE TRUCK ON MAIN STREET DIRECTLY NEXT TO
DUMPSTERS AND BATHROOMS
-FOOD TRUCK IN PARKING SPACES DIRECTLY NEXT TO
MIDDLE PARK



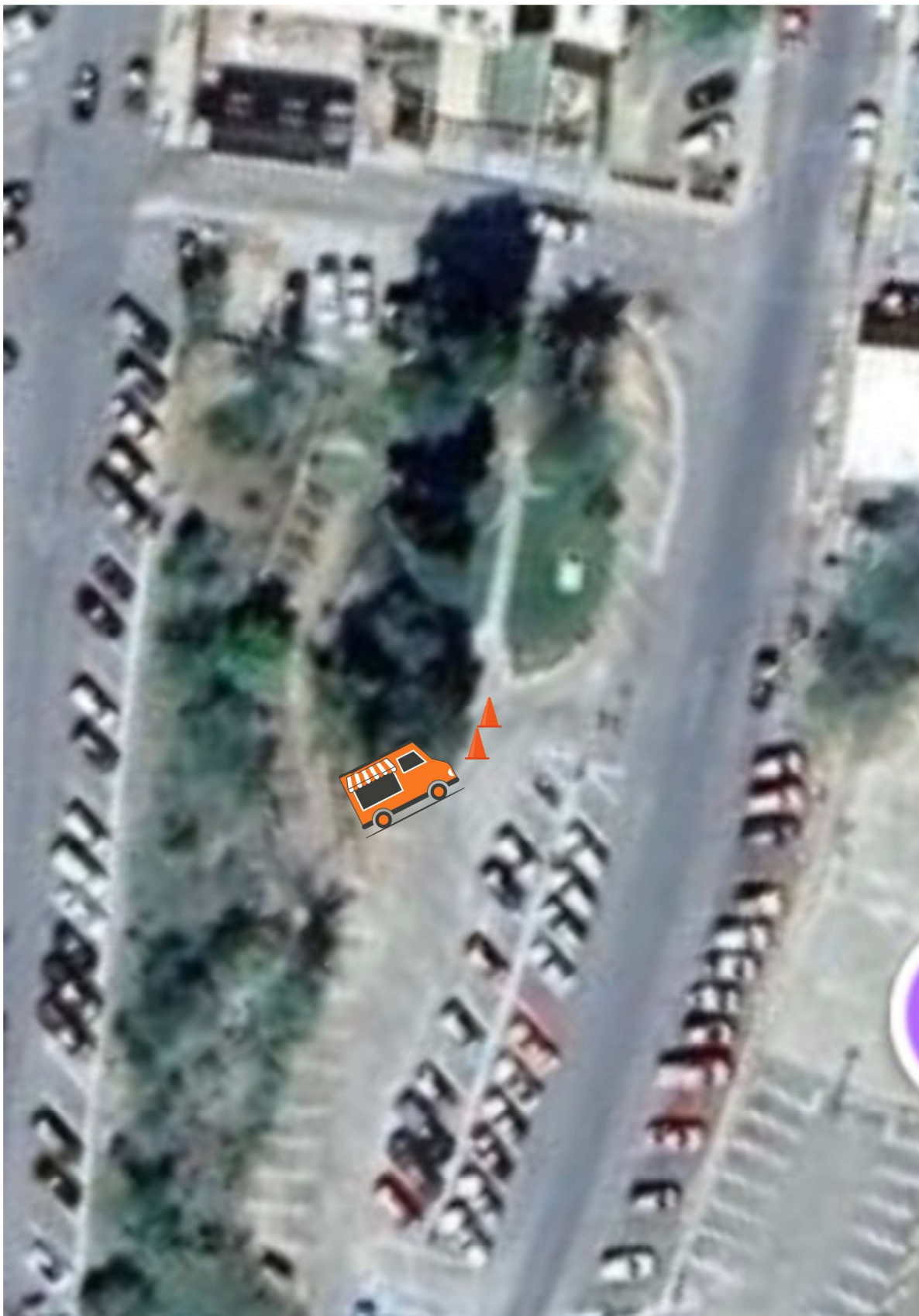
MIDDLE PARK



MAIN STREET



Beverage food truck to be parked in the first two parking spots nearest the bathrooms in center of town- with line and pedestrian traffic to be pointed toward bathrooms and away from street. Option to add orange cones or volunteer to guide traffic accordingly



Food truck to be parked in the first two parking spaces nearest the park in the back row of the middle parking lot with line and pedestrian traffic guided toward park and away from parking lot. Option for orange cones or volunteer to guide walking traffic