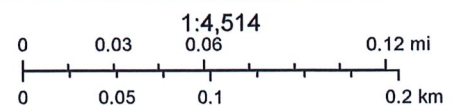
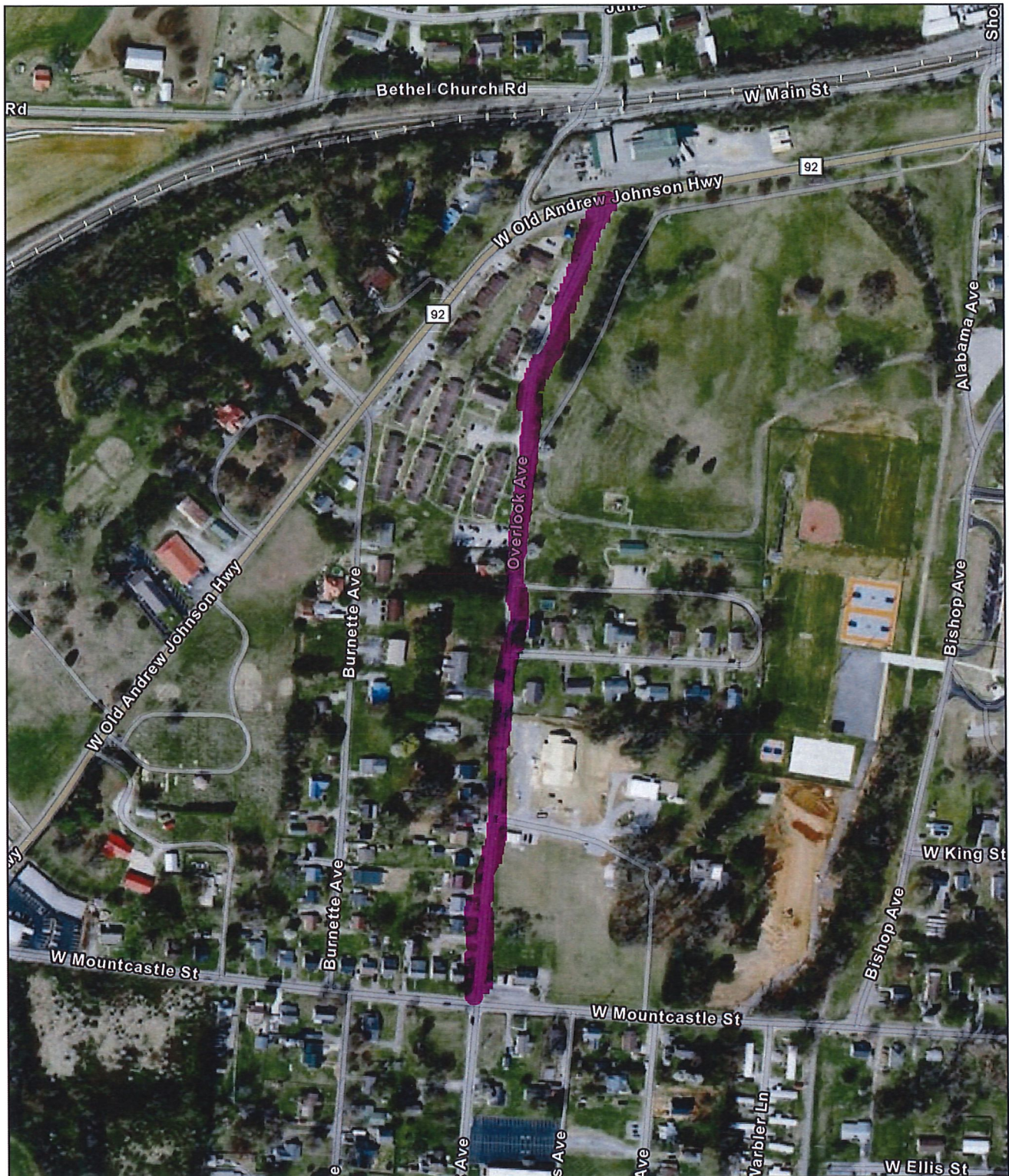


# Item 1 - Overlook Ave. from Old AJ Hwy to W. Mountcastle St

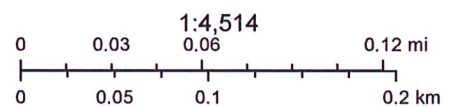


State of Tennessee, Comptroller of the Treasury, Office of Local Government (OLG), Esri Community Maps Contributors, © OpenStreetMap, Microsoft, Esri, TomTom, Garmin, SafeGraph, GeoTechnologies, Inc, METI/NASA, USGS, EPA, NPS, US Census Bureau, USDA, USFWS

The property lines are compiled from information maintained by your local county Assessor's office but are not conclusive evidence of property ownership in any court of law.



## Item 2 - Ridgewood Dr. from Bethel Church Rd to City Limits

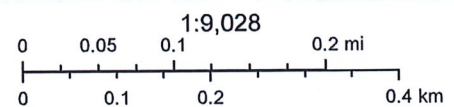
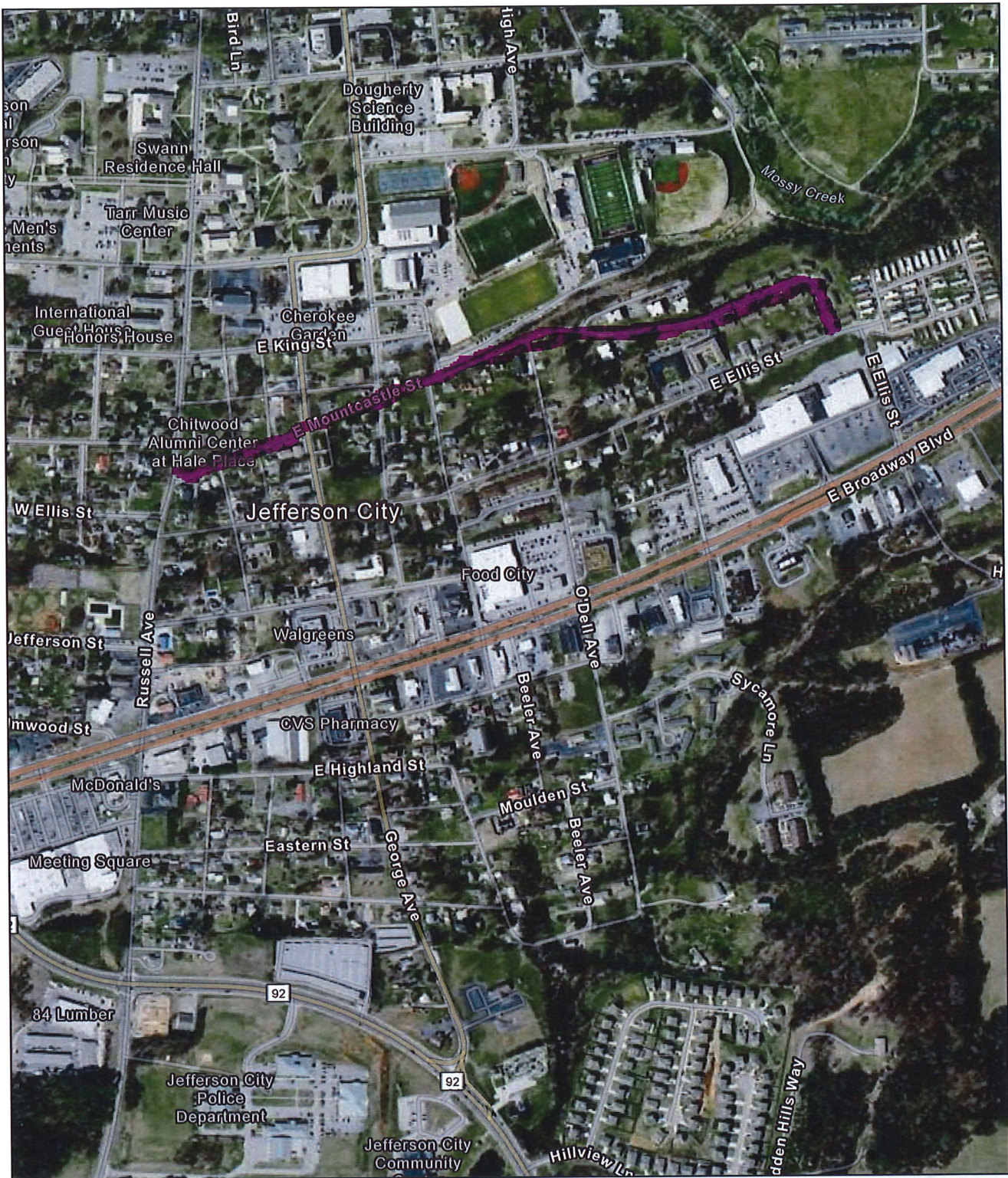


State of Tennessee, Comptroller of the Treasury, Office of Local Government (OLG), Esri Community Maps Contributors, © OpenStreetMap, Microsoft, Esri, TomTom, Garmin, SafeGraph, GeoTechnologies, Inc, METI/NASA, USGS, EPA, NPS, US Census Bureau, USDA, USFWS

The property lines are compiled from information maintained by your local county Assessor's office but are not conclusive evidence of property ownership in any court of law.



### Item 3: E. Mountcastle St. from Russell Avenue to E. Ellis St.

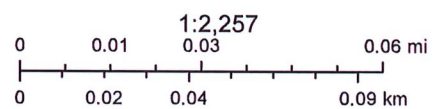


State of Tennessee, Comptroller of the Treasury, Office of Local Government (OLG), Esri Community Maps Contributors, © OpenStreetMap, Microsoft, Esri, TomTom, Garmin, SafeGraph, GeoTechnologies, Inc. METI/NASA, USGS, EPA, NPS, US Census Bureau, USDA, USFWS

The property lines are compiled from information maintained by your local county Assessor's office but are not conclusive evidence of property ownership in any court of law.



## Item 4 - Franklin Drive

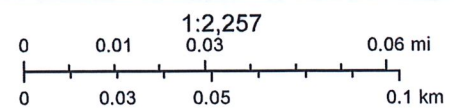
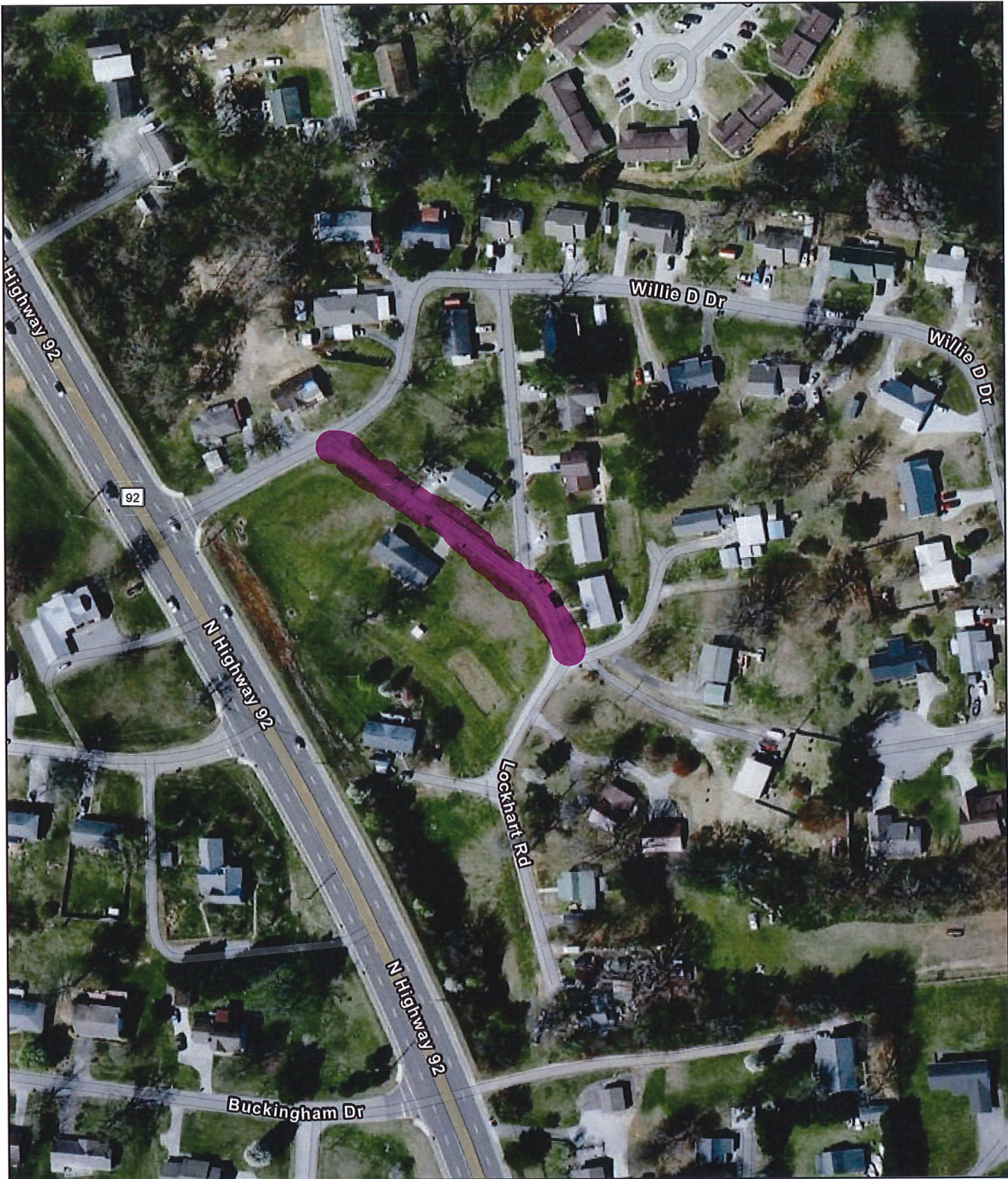


State of Tennessee, Comptroller of the Treasury, Office of Local Government (OLG), Esri Community Maps Contributors, © OpenStreetMap, Microsoft, Esri, TomTom, Garmin, SafeGraph, GeoTechnologies, Inc, METI/NASA, USGS, EPA, NPS, US Census Bureau, USDA, USFWS

The property lines are compiled from information maintained by your local county Assessor's office but are not conclusive evidence of property ownership in any court of law.



## Item 5 - Lockhart Rd

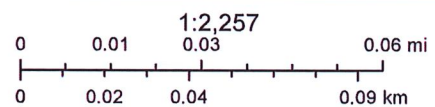
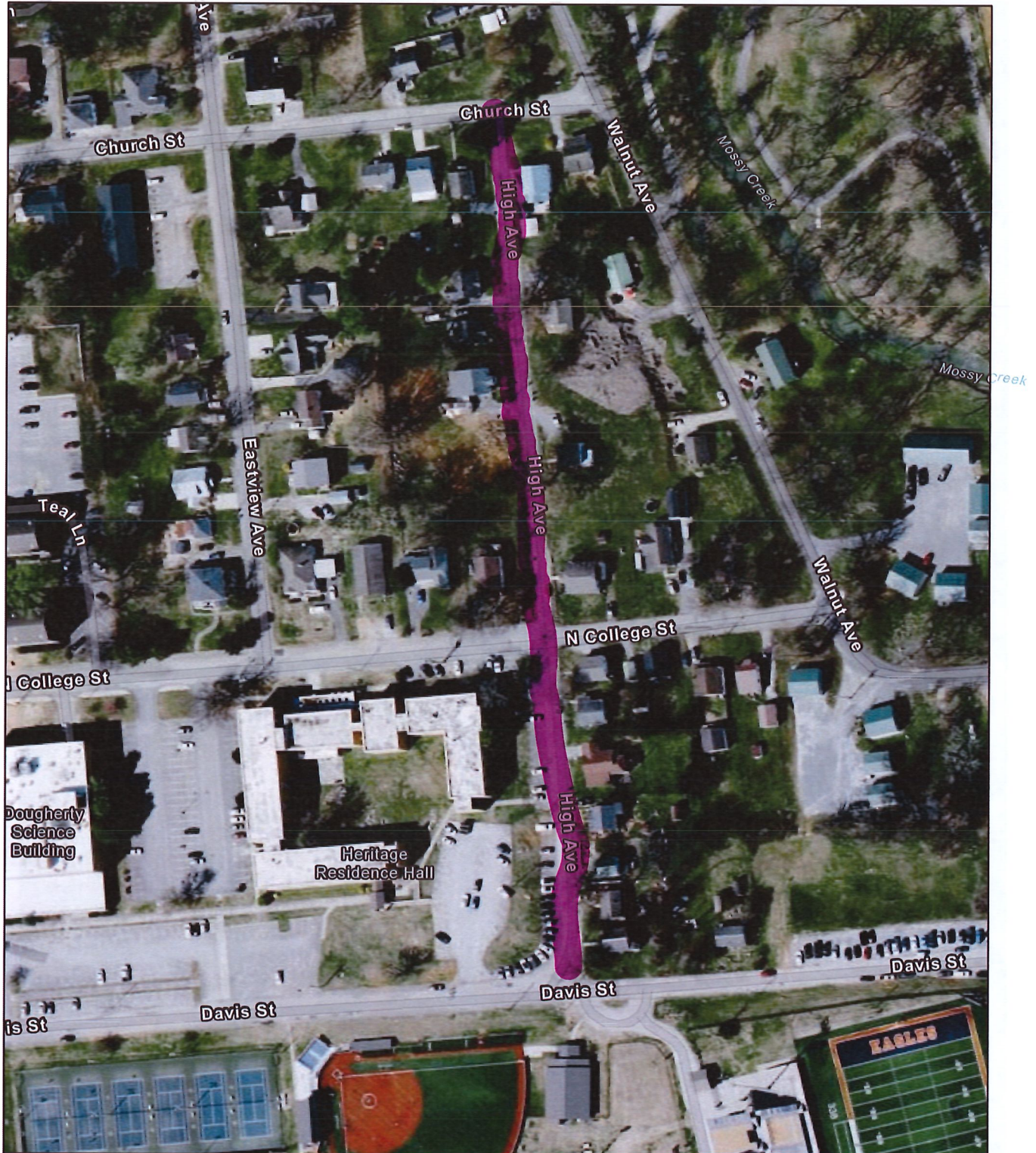


State of Tennessee, Comptroller of the Treasury, Office of Local Government (OLG), Esri Community Maps Contributors, © OpenStreetMap, Microsoft, Esri, TomTom, Garmin, SafeGraph, GeoTechnologies, Inc, METI/NASA, USGS, EPA, NPS, US Census Bureau, USDA, USFWS

The property lines are compiled from information maintained by your local county Assessor's office but are not conclusive evidence of property ownership in any court of law.



## Item 6 - High Avenue



State of Tennessee, Comptroller of the Treasury, Office of Local Government (OLG), Esri Community Maps Contributors, © OpenStreetMap, Microsoft, Esri, TomTom, Garmin, SafeGraph, GeoTechnologies, Inc, METI/NASA, USGS, EPA, NPS, US Census Bureau, USDA, USFWS

The property lines are compiled from information maintained by your local county Assessor's office but are not conclusive evidence of property ownership in any court of law.

## **BID ALTERNATE SPECIFICATIONS**

RFB 26-04

2025 Street Paving Project

The following scope of work is requested for two separate lots located at the Jefferson City Senior Center (807 W. Jefferson Steet) to be submitted for consideration in addition to the base bid while mobilized:

### Additional Alternate #1: Senior Center Parking Lot Resurfacing and Striping

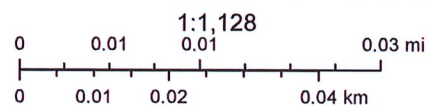
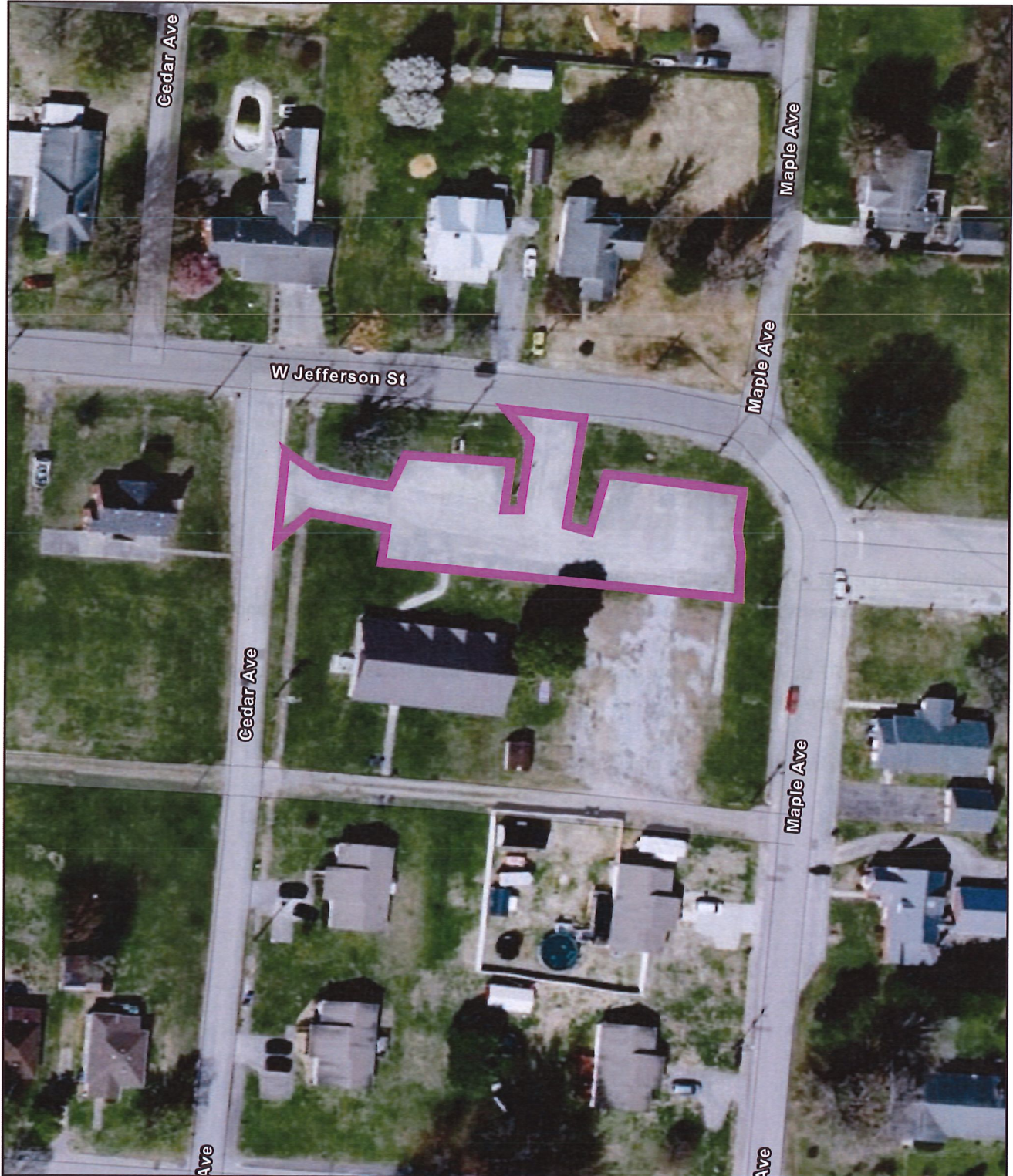
1. Weed kill existing vegetation on existing lot, remove vegetation from site
2. Install 1720 sq yds of asphalt surfacing paving -- tack coat and 1 ½" E surface mix
3. Stripe parking lot to match existing paint scheme (lot includes ADA designated spaces)

### Additional Alternat #2: Neighborhood Center Lot Paving (Current Gravel Lot)

1. Weed kill existing vegetation on gravel lot and remove vegetation, grade, and recompact stone.
2. Install 987 sq yds of light duty asphalt paving --- 3" base stone, 2" B-mod binder, tack coat and 1 ½" E surface mix
3. Stripe parking lot to achieve maximum amount of spaces



## Additional Alternate 1 - Senior Center Parking Lot



State of Tennessee, Comptroller of the Treasury, Office of Local Government (OLG), Esri Community Maps Contributors, © OpenStreetMap, Microsoft, Esri, TomTom, Garmin, SafeGraph, GeoTechnologies, Inc, METI/NASA, USGS, EPA, NPS, US Census Bureau, USDA, USFWS

The property lines are compiled from information maintained by your local county Assessor's office but are not conclusive evidence of property ownership in any court of law.