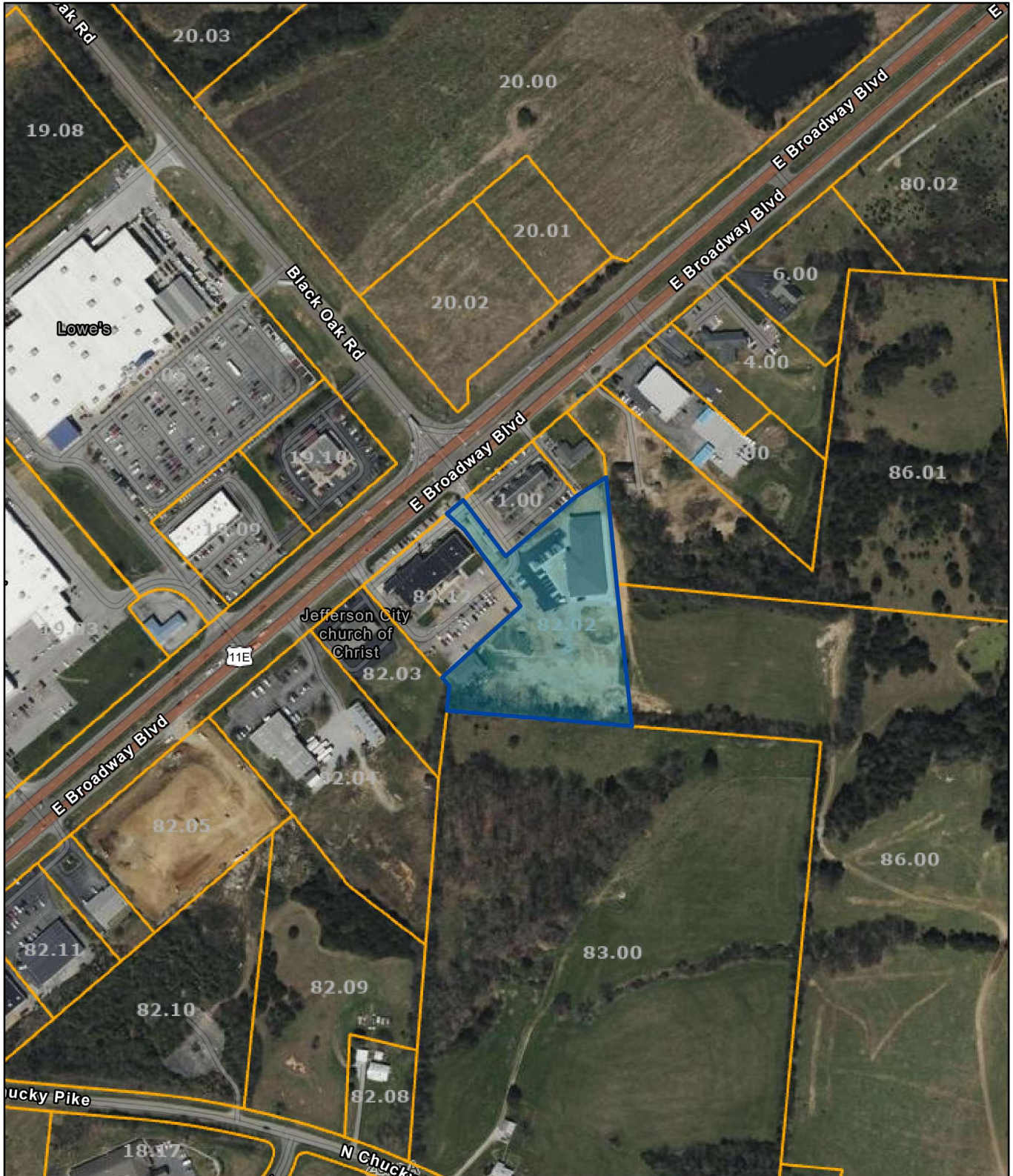


# Jefferson County - Parcel: 015 082.02



Date: July 21, 2025

County: JEFFERSON

Owner: KOUSER FAMILY LIMITED PARTNERSHIP#1 % AQUEEL KOUSER

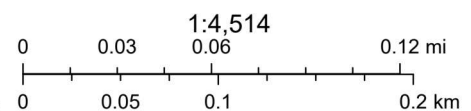
Address: BROADWAY BLVD E 661

Parcel ID: 015 082.02

Deeded Acreage: 3.37

Calculated Acreage: 0

Vexcel Imagery Date: 2023



State of Tennessee, Comptroller of the Treasury, Division of Property Assessments (DPA), Esri Community Maps Contributors, Morristown-Hamblen GIS, © OpenStreetMap, Microsoft, Esri, TomTom, Garmin, SafeGraph, GeoTechnologies, Inc, METI/NASA, USGS, EPA, NPS, US Census Bureau, USDA, USFWS

The property lines are compiled from information maintained by your local county Assessor's office but are not conclusive evidence of property ownership in any court of law.