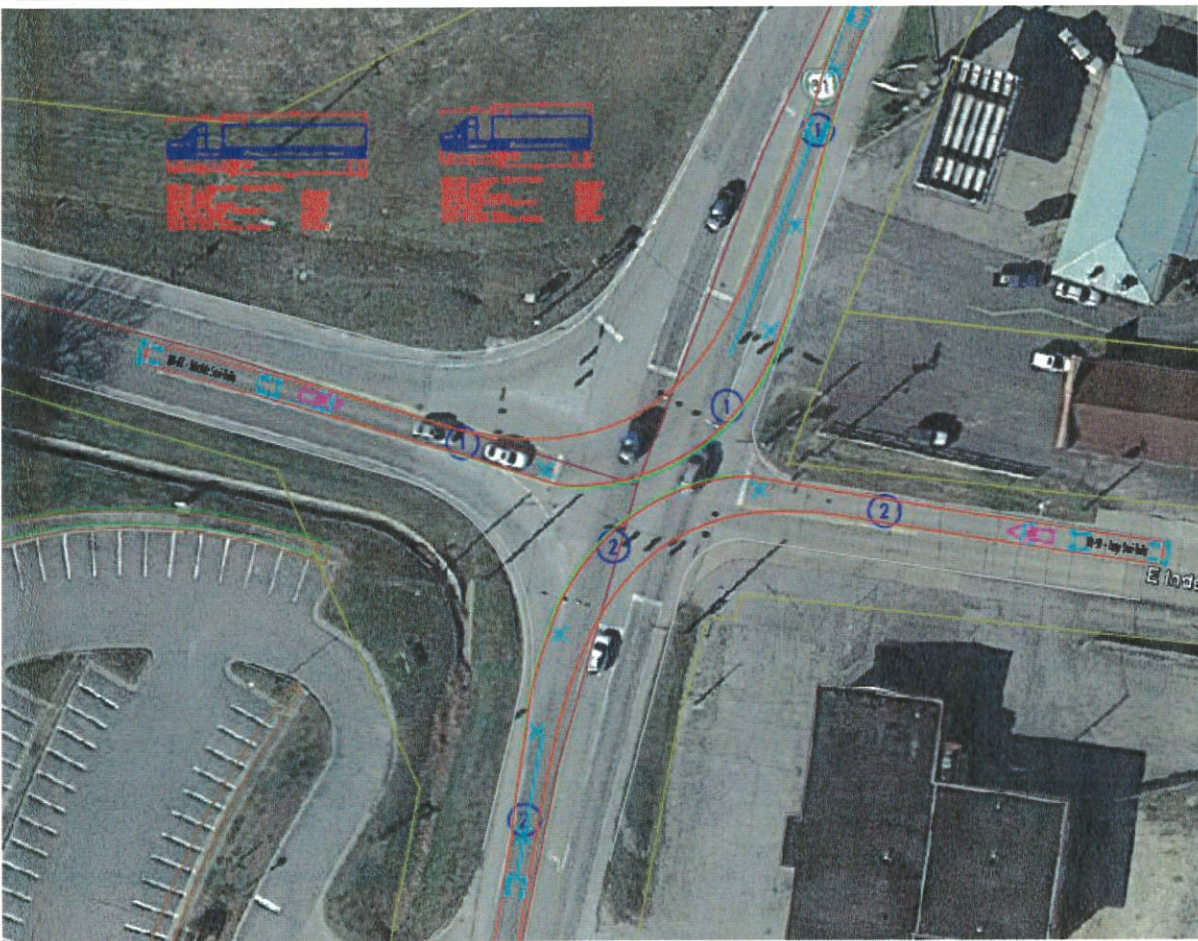


Jackson City Wide Transportation Plan

January 2018



Figure 12: Truck Turning Movements - US 61 & Independence Street



4.5. Oak Street near Elementary & Junior High School

The student pick-ups for West Lane Elementary School (ES) and Russell Hawkins Junior High School (JHS) are both located along Oak Street just to the east of West Lane. Queues of parents on Oak Street waiting to pick up their children were observed to be approximately 1,100 feet long, extending as far as Willow Bend Drive. Queues also occurred on Broadridge Drive and East Lane, which block through traffic on these routes and need to be addressed.

The on-site drop-off lane at West Lane ES is planned to be updated as part of the school's expansion, which will go far to resolve the queuing issues along Oak Street. However, it should be noted that West Lane ES is not the only cause of these queues. Supplemental observations were made on an early-release day for the elementary school, during which significant queuing still occurred along Oak Street from motorists waiting to access the Junior High School.

A potential traffic management solution is to modify the elementary school's circulatory pattern by directing parents to turn right out of the school towards Oak Street and West Lane, while junior high parents would be directed to turn right out of the school towards Broadridge and East Lane. This would help disperse the traffic loads by separating motorists exiting from the two schools, thereby preventing



gridlock at the elementary school's driveway. Special cases may exist where guardians may pick up students from both schools. In this case, it's recommended the junior high school student walk to the elementary school to be picked up.

Another possible traffic management solution would be to temporarily block eastbound traffic between West Lane and the junior high school entrance; all school traffic would be required to approach from the east. However, this would require daily coordination in the placing and removal of a temporary barricade (most likely using road cones). Also, it is generally undesirable to restrict service in a grid network since it would shift through movements to a parallel route, which could result in additional problems.

Reductions in vehicular demands would also be beneficial. Initiatives should be put in place to encourage students to walk to school, ride the bus, or carpool. Sidewalks should be constructed between the schools and the surrounding neighborhoods on both sides of the road to allow and encourage children to walk to school. A Safe Routes to School (SRTS) plan should be prepared, which may suggest non-motorized ways to have children commute to school, such as a Walking School Bus.

4.6. Middle School on Independence Street

Jackson Middle School's driveway on Independence Street is significantly constrained during school dismissal. The school uses a system of both buses and parent pick-up at the end of the day, with buses using the loop that enters and exits the site via Broadridge Drive, and parents using the entrance on Independence Street. However, there is not enough space on-site for parents to wait for their child, so parents currently queue on Independence Street, basically parking on a state highway for up to 20 minutes, in both directions. Independence Street has a speed limit of 45 mph during non-school hours, lowering to 35-mph school zone while school is in session.

Parents waiting to make an eastbound right turn block the eastbound through movement, causing through traffic to utilize the two-way left turn lane to pass those waiting at the entrance (a queue of over 600'). Likewise, the westbound left-turn queue extends over 500' to the east near the crest of the hill. This creates a dangerous situation for westbound through vehicles cresting the hill into a stopped queue. Parents were also observed traveling on the wrong side of the road and entering the school via the exit, conflicting with exiting vehicles.

Eastbound and Westbound Queues on Independence Street

