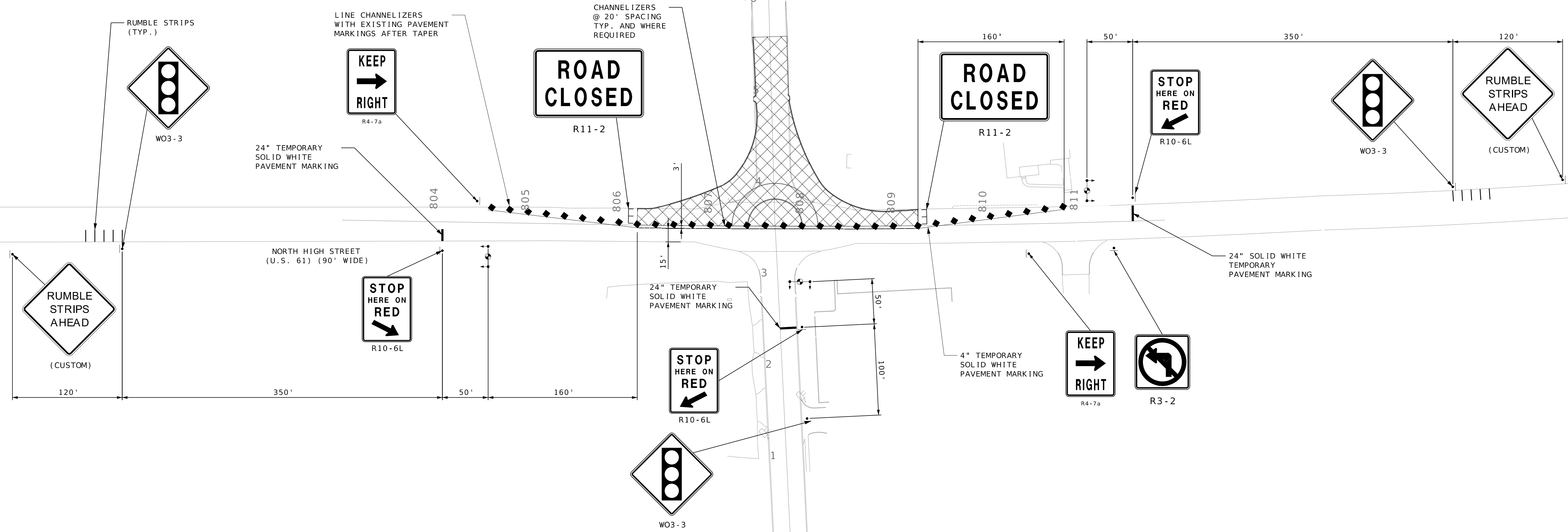


- NOTES:
1. SIGNS SHALL BE SPACED AT 500', UNLESS OTHERWISE NOTED.
  2. SPACING MAY BE ADJUSTED, WITH APPROVAL OF THE ENGINEER, TO AVOID CONFLICTS.
  3. COMPLETELY COVER OR REMOVE ALL EXISTING SIGNS THAT CONFLICT WITH THE TRAFFIC CONTROL SIGNING.
  4. SIGNS SHALL BE COVERED OR REMOVED WHEN NOT IN USE.
  5. SIGNS SHOWN SHALL NOT BE MOVED FOR THE DURATION OF THE PROJECT, UNLESS OTHERWISE NOTED.
  6. ALL PAVEMENT MARKING DESIGNATED FOR REMOVAL, REGARDLESS OF THE TYPE OF EXISTING MARKING, SHALL BE COMPLETELY REMOVED TO THE SATISFACTION OF THE ENGINEER WITH MINIMAL DAMAGE TO THE PAVEMENT. NO MORE THAN FIVE PERCENT OF THE EXISTING MARKING SHALL REMAIN UPON COMPLETION OF THE WORK. THE PAVEMENT SURFACE SHALL NOT BE LEFT SCARRED TO SUCH AN EXTENT THAT, IN THE OPINION OF THE ENGINEER, THE OBLITERATED AREA IS MISLEADING TO MOTORISTS. ANY EXCESS DAMAGE OR SCARRING OF THE PAVEMENT SHALL BE REPAIRED AT THE CONTRACTOR'S EXPENSE.
  7. BARRELS SHALL BE USED ALONG ALL OPEN EXCAVATIONS.
  8. OBLITERATE AND REMOVE ANY EXISTING PAVEMENT MARKINGS THAT CONFLIT WITH TEMPORARY TRAFFIC CONTROL.



DRAFT

TRAFFIC CONTROL LEGEND

- WORK AREA
- SIGN
- CHANNELIZER
- S.W. - SOLID WHITE MARKING TAPE
- TYPE 1 BARRICADE
- TYPE 3 BARRICADE
- PORTABLE TRAFFIC SIGNAL (PTS)
- ROUNDABOUT ELEMENTS ALREADY CONSTRUCTED IN PREVIOUS STAGE
- TEMPORARY LONG TERM RUMBLE STRIPS

DRAFT

DATE PREPARED  
03/27/2025

ROUTE US 61	STATE MO
DISTRICT SE	SHEET NO. 13

COUNTY  
CAPE GIRARDEAU

JOB NO.  
JSE0048

CONTRACT ID.

PROJECT NO.  
STP-3005(003)

BRIDGE NO.

DESCRIPTION	DATE

CITY OF JACKSON  
101 COURT STREET  
JACKSON, MO 63755  
(573)-243-3568

LOCHMULLER GROUP  
399 S SPRING AVE., SUITE 208B  
SAINT LOUIS, MISSOURI 63110  
P (314) 621-3395, F (314) 621-3288  
WWW.LOCHMULLERGROUP.COM  
MISSOURI STATE ENGINEERING CORPORATION  
CERTIFICATE/LICENSE NO. 2002011852

Allen & Hoshall  
engineers-architects-surveyors

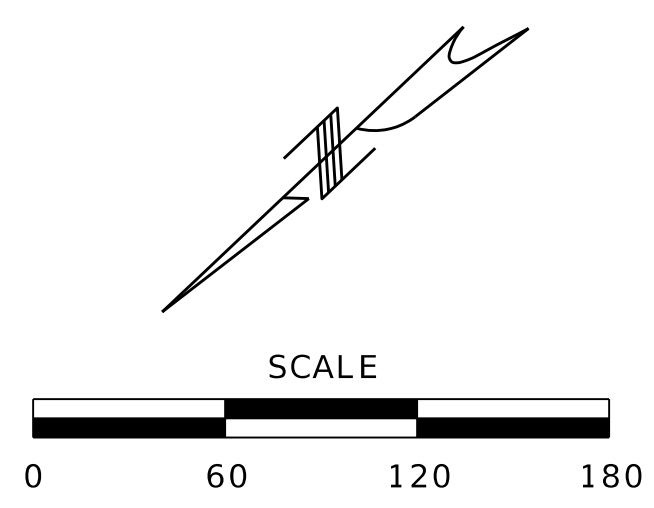
US-61 & DEERWOOD DRIVE

MAINTENANCE OF TRAFFIC PLANS  
STAGE 1

2 OF 5

IF A SEAL IS PRESENT ON THIS SHEET IT HAS BEEN ELECTRONICALLY SEALED AND DATED.

X:\Production\Files\2022\522-0045\CAD\03 - Final Plans\016\_TC\_01\_STP3005(305)\_120\_Rev\_2025-12-03.dgn 4:45:36 PM 12/8/2025

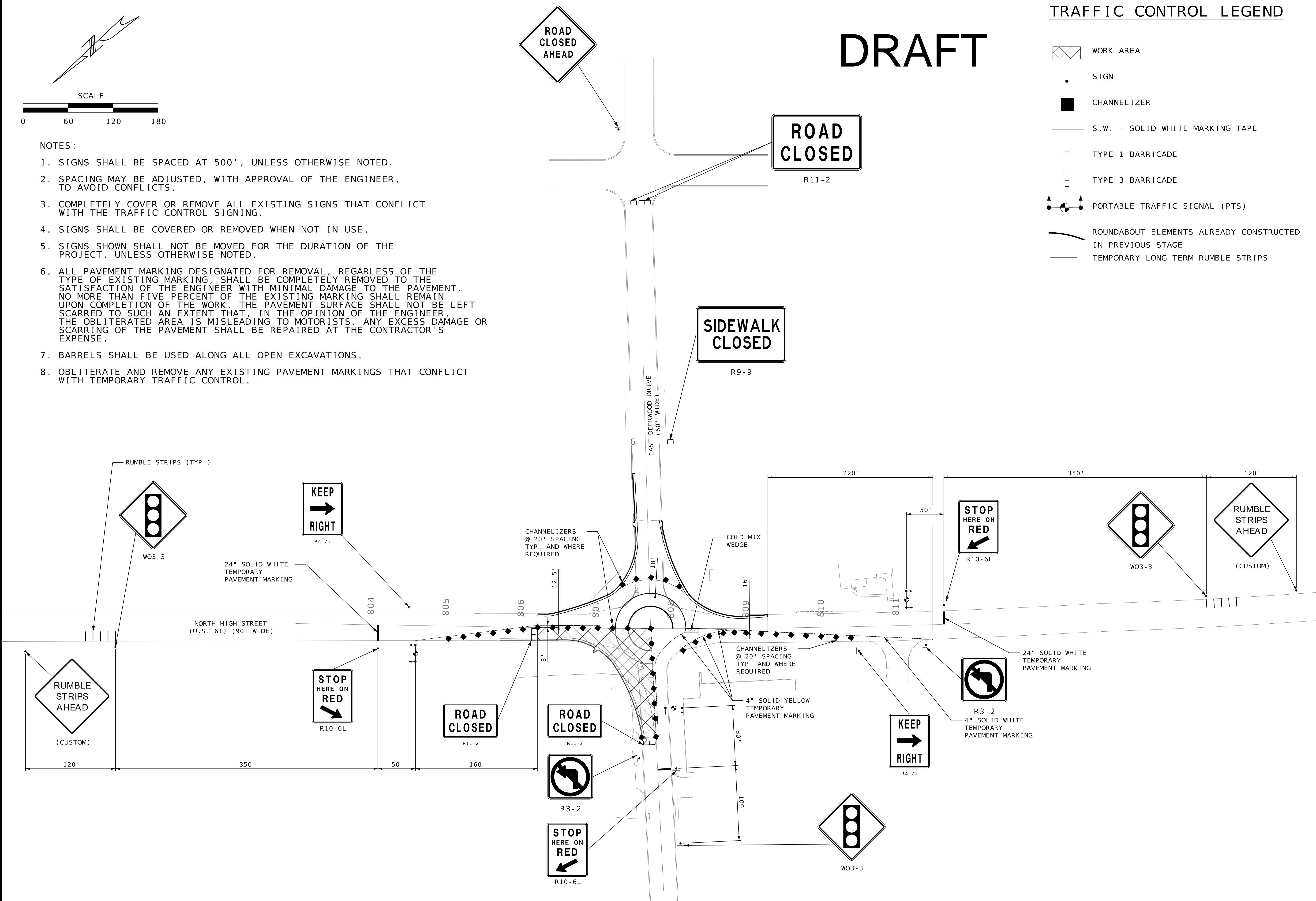


- NOTES:
1. SIGNS SHALL BE SPACED AT 500', UNLESS OTHERWISE NOTED.
  2. SPACING MAY BE ADJUSTED, WITH APPROVAL OF THE ENGINEER, TO AVOID CONFLICTS.
  3. COMPLETELY COVER OR REMOVE ALL EXISTING SIGNS THAT CONFLICT WITH THE TRAFFIC CONTROL SIGNING.
  4. SIGNS SHALL BE COVERED OR REMOVED WHEN NOT IN USE.
  5. SIGNS SHOWN SHALL NOT BE MOVED FOR THE DURATION OF THE PROJECT, UNLESS OTHERWISE NOTED.
  6. ALL PAVEMENT MARKING DESIGNATED FOR REMOVAL, REGARDLESS OF THE TYPE OF EXISTING MARKING, SHALL BE COMPLETELY REMOVED TO THE SATISFACTION OF THE ENGINEER WITH MINIMAL DAMAGE TO THE PAVEMENT. NO MORE THAN FIVE PERCENT OF THE EXISTING MARKING SHALL REMAIN UPON COMPLETION OF THE WORK. THE PAVEMENT SURFACE SHALL NOT BE LEFT SCARRED TO SUCH AN EXTENT THAT, IN THE OPINION OF THE ENGINEER, THE OBLITERATED AREA IS MISLEADING TO MOTORISTS. ANY EXCESS DAMAGE OR SCARRING OF THE PAVEMENT SHALL BE REPAIRED AT THE CONTRACTOR'S EXPENSE.
  7. BARRELS SHALL BE USED ALONG ALL OPEN EXCAVATIONS.
  8. OBLITERATE AND REMOVE ANY EXISTING PAVEMENT MARKINGS THAT CONFLICT WITH TEMPORARY TRAFFIC CONTROL.

DRAFT

TRAFFIC CONTROL LEGEND

- WORK AREA
- SIGN
- CHANNELIZER
- S.W. - SOLID WHITE MARKING TAPE
- TYPE 1 BARRICADE
- TYPE 3 BARRICADE
- PORTABLE TRAFFIC SIGNAL (PTS)
- ROUNDABOUT ELEMENTS ALREADY CONSTRUCTED IN PREVIOUS STAGE
- TEMPORARY LONG TERM RUMBLE STRIPS



DRAFT

DATE PREPARED  
03/27/2025

ROUTE US 61	STATE MO
DISTRICT SE	SHEET NO. 13

COUNTY  
CAPE GIRARDEAU

JOB NO.  
JSE0048

CONTRACT ID.

PROJECT NO.  
STP-3005(003)

BRIDGE NO.

DATE	DESCRIPTION

CITY OF JACKSON  
101 COURT STREET  
JACKSON, MO 63755  
(573)-243-3568

399 S SPRING AVE., SUITE 208B  
SAINT LOUIS, MISSOURI 63110  
P (314) 621-3395, F (314) 621-3288  
WWW.LOCHMULLERGROUP.COM  
MISSOURI STATE LICENSE NO. 0002011852

engineers-architects-surveyors

US-61 & DEERWOOD DRIVE	MAINTENANCE OF TRAFFIC PLANS STAGE 2
2	OF 5

X:\Production\Files\2022\522-0045\CAD\03 - Final Plans\016\_TC\_01\_STP3005(305)\_120\_Rev\_2025-12-03.dgn 4:53:51 PM 12/8/2025



