

April 28, 2022

Ms. Victoria Newton
Executive Secretary
Executive Council of Iowa
State Capitol
LOCAL

Re: Emergency Allocations of Funds

Dear Ms. Newton,

On or about April 13, 2022 the Iowa Communications Network (ICN) received physical damage to ICN Communications equipment in Des Moines, Iowa. An email was sent to the Office of the Auditor of State and the Executive Council. This letter represents a claim for \$18,357.52 in accordance with Chapter 29C.20 of the Code of Iowa for an emergency allocation of funds to repair damages sustained. Paid invoices will be included upon completion of repairs.

It was determined ICN equipment was exposed due to continued and excessive erosion in a culvert along Highway 169, between 230th Street and Oriole Avenue, in Union County, IA. This will require relocation of the fiber. Enclosed are the damage assessment and cost estimate to restore that damaged equipment to normal operating condition.

If you have any questions regarding this claim, please call my office at 515-725-4666 located in the Grimes State Office Building.

Sincerely,



Randy Goddard
Executive Director

Enclosures

cc: Office of Auditor of State (Tammy Hollingsworth)
ICN Operations Division (Dave Augspurger)
ICN Finance Division (Kammy McHone)

Randy Goddard, Executive Director

Grimes State Office Building, 400 E. 14th Street, Des Moines, IA 50319 Phone: 515-725-4692 icn.iowa.gov

IOWA TELECOMMUNICATIONS AND TECHNOLOGY COMMISSION

April 25, 2022

Estimate for ICN Fiber Cable Damage: Outside Plant Log #88220607

This estimate is for the relocation of an exposed ICN fiber cable along Highway 169 between 230th & Oriole Ave in Union County. The exposed ICN cable is the result of natural causes and will require relocation back into the ground. The ICN notified the Executive Council of ICN's intent to submit this as a claim for reimbursement on April 20, 2022. Relocation will require approximately 650-ft of new conduit and cable be placed and two maintenance splices introduced.

Estimated costs for this project are listed below:

Construction Labor & material	\$15,814.58
Splicing labor	\$2,260.00
ICN-provided material	\$282.94
Fiber Network Service Hours	\$0.00
Total:	\$18,357.52

Please feel free to contact me if you have any questions.

David Augspurger
ICN Outside Plant Lead
515-725-4604
david.augspurger@iowa.gov

Randy Goddard, Executive Director

Grimes State Office Building, 400 E. 14th Street, Des Moines, IA 50319 Phone: 515-725-4692 icn.iowa.gov

IOWA TELECOMMUNICATIONS AND TECHNOLOGY COMMISSION

ESTIMATE

PROJECT	Cable washout along HWY 169 south of Oriole Ave	COUNTY	Union
OSP LOG #	88220607	INC/PRB	INC0047807
LINK ID(S)	1405	FIBER CT	8F

Contracted Labor and Materials

Construction Labor	\$13,217.50
Construction Materials	\$2,597.08
Splicing Labor	\$2,260.00
ICN Provided Materials	\$282.94
Miscellaneous	\$0.00
Engineering Design	\$0.00
TOTAL:	\$18,357.52

VENDOR CONSTRUCTION

CATEGORY	ITEM	UNIT	RATE	QTY	SUBTOTAL
Horizontal Boring	Rural 1 ea 2" conduit	LF	\$9.00	650	\$5,850.00
Handhole Placement	Rural Std 24x36x30	EA	\$500.00	2	\$1,000.00
Fiber Installation	New Duct Rural	LF	\$1.25	850	\$1,062.50
Expose/Lower Cable	Rural Expose Existing Live Cable	LF	\$20.00	100	\$2,000.00
Misc.	Place Warning Marker-Rural	EA	\$25.00	2	\$50.00
Misc.	Mobilization	LS	\$500.00	1	\$500.00
Misc.	Mobilization mileage adder	MILES	\$2.50	202	\$505.00
Misc.	Material Pick Up	EA	\$250.00	1	\$250.00
Misc.	Bore Logging	LF	\$0.00	1	\$0.00
Misc.	As-Building	EA	\$0.00	1	\$0.00
Misc.	Backhoe/Mini Excavator	HR	\$250.00	8	\$2,000.00
VENDOR CONSTRUCTION SUBTOTAL:					\$13,217.50

SPLICING LABOR

CATEGORY	ITEM	UNIT	UNIT RATE	QTY	SUBTOTAL
Splicing labor	Splicing Mobilization	LS	\$500.00	1	\$500.00
Splicing labor	Prep Splice Closure	EA	\$150.00	2	\$300.00
Splicing labor	Fusion Splicing	Splicing 1-	\$60.00	8	\$480.00
Splicing labor	Fusion Splicing	Splicing 1-	\$60.00	8	\$480.00
Splicing labor	Off Hours Charge	LS	\$500.00	1	\$500.00
SPLICING LABOR SUBTOTAL:					\$2,260.00

ICN PROVIDED MATERIALS

CATEGORY	ITEM	UNIT	QTY	UNIT RATE	SUBTOTAL	PART #
Splice Closure	*450A Splice Closure (w/lugs)	EA	2	\$126.88	\$253.76	FOSC450-A4-4-NT-0-A1V
Splice Tray	*A Tray 12-pos	EA	2	\$12.01	\$24.02	497817-000
Shield Bond Connector	*Shield Bond Connector	EA	4	\$1.29	\$5.16	4460-D
ICN PROVIDED MATERIALS SUBTOTAL:					\$282.94	

VENDOR PROVIDED MATERIALS

CATEGORY	ITEM	UNIT	QTY	UNIT RATE	SUBTOTAL	
Duct	2" Orange HDPE Duct	LFT	650	\$1.17	\$760.50	13.5
Handholes	24x36x30 Tier 15 HH w/lid	EA	2	\$723.29	\$1,446.58	0
Fiber Cable	12F Armored SM Cable	LFT	1000	\$0.39	\$390.00	0
VENDOR PROVIDED MATERIALS SUBTOTAL:					\$2,597.08	

ENGINEERING DESIGN

CATEGORY	ITEM	UNIT	QTY	UNIT RATE	SUBTOTAL
ENGINEERING DESIGN SUBTOTAL:					\$0.00

MISCELLANEOUS

CATEGORY	ITEM	UNIT	QTY	UNIT RATE	SUBTOTAL	NOTES
MISCELLANEOUS SUBTOTAL:					\$0.00	



McHone, Kammy <kammy.mchone@iowa.gov>

ESTIMATE: ICN - Exposed Fiber - Union County - along HWY 169 between 230th St and Oriole Ave (88220607)

1 message

Augspurger, Dave <daugspurger@icn.state.ia.us>

Mon, Apr 25, 2022 at 9:47 AM

To: Kammy Mchone <kammy.mchone@iowa.gov>

Cc: "Harris, Chris [ICN]" <chris.harris@iowa.gov>

Kammy,

Estimate for Executive Council attached, let me know of any questions.

Thanks.

Dave Augspurger

Iowa Communications Network

Sr. Telecommunications Engineer | Outside Plant Lead

515-725-4604 (office) | 515-229-2013 (cell)

On Wed, Apr 13, 2022 at 8:56 AM Augspurger, Dave <daugspurger@icn.state.ia.us> wrote:

Good morning,

An ICN field technician discovered exposed ICN cable at a culvert along Highway 169 in Union County between 230th St and Oriole Ave yesterday afternoon. Exposure is the result of continued and excessive erosion of the culvert and will require relocation via directional bore under the flow line and placement of maintenance splices. The ICN would like to submit this as a claim for reimbursement for damages due to natural causes (erosion). Please let me know of any questions.

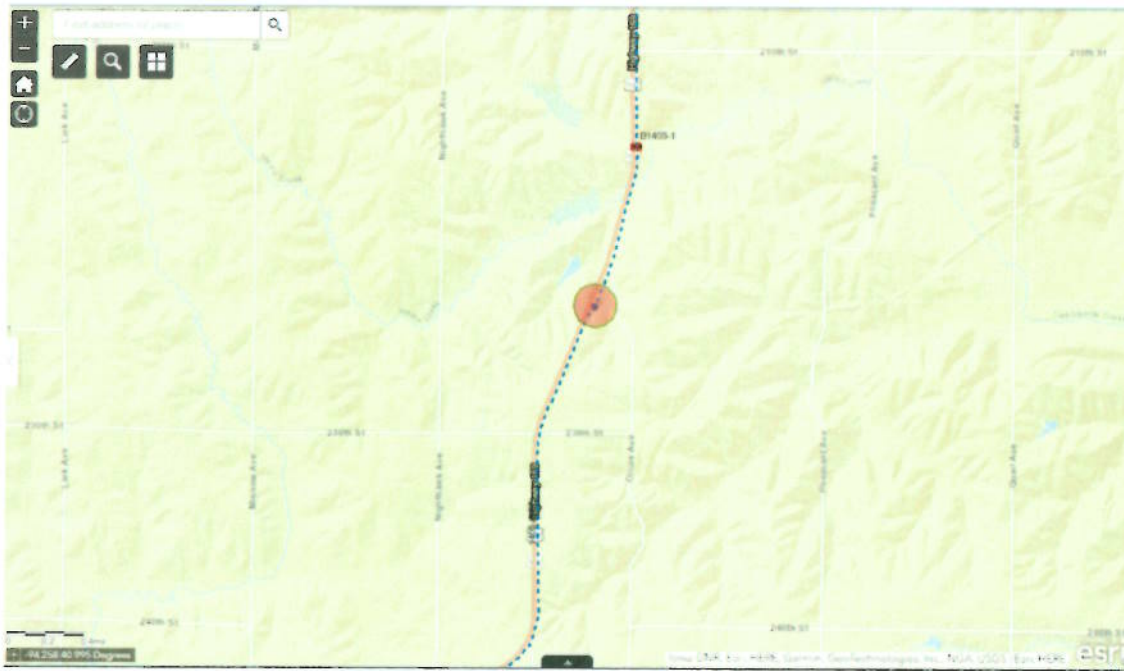
Respectfully,

Dave Augspurger

Iowa Communications Network

Sr. Telecommunications Engineer | Outside Plant Lead

515-725-4604 (office) | 515-229-2013 (cell)



2 attachments

 **88220607 - Union Co - Estimate.pdf**
122K

 **88220607 Union Co Estimate.docx**
409K