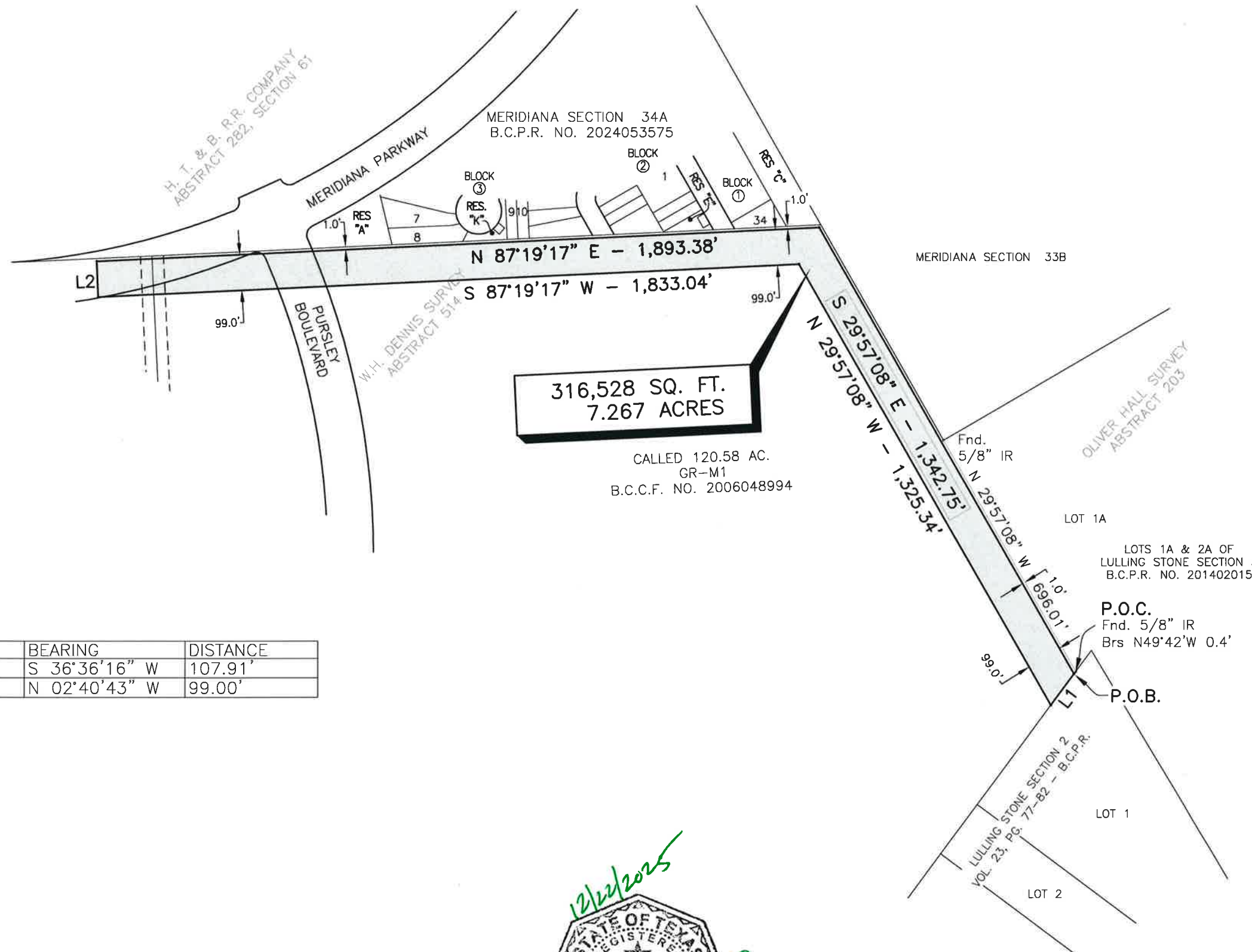
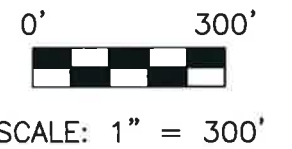


LEGEND

- AC. Acres
- FND. Found
- B.C.C.F. Brazoria County Clerk File
- B.C.D.R. Brazoria County Deed Records
- B.C.P.R. Brazoria County Plat Records
- I.R. Iron Rod
- P.O.B. Point of Beginning
- PG. Page
- SQ. FT. Square Feet
- VOL. Volume
- (F) Found 5/8" capped iron rod stamped "E.H.R.A. 713-784-4500"



LINE	BEARING	DISTANCE
L1	S 36°36'16" W	107.91'
L2	N 02°40'43" W	99.00'

NOTES:

1. Bearings shown hereon refer to the Texas State Plane Coordinate System of 1983, South Central Zone, as determined by GPS measurements.
2. This exhibit was prepared without the benefit of a current title report, therefore, all easements or other matters of record might not be shown hereon.
3. For additional information about the subject tract, see the metes and bounds description prepared separately.
4. No Visible or apparent improvements or features are shown hereon.

12/22/2025

Charles Jurica



EHRA
ENGINEERING THE FUTURE
SINCE 1936

10011 MEADOWGLEN LN
HOUSTON, TEXAS 77042
713-784-4500
WWW.EHRA.TEAM
TBPE No. F-726
TBPELS No. 10092300

**EXHIBIT MAP OF A 7.267 ACRES
OR 316,528 SQUARE FOOT
OF LAND SITUATED IN
THE W.H. DENNIS SURVEY, A-514,
BRAZORIA COUNTY, TEXAS**

DATE: December 22, 2025	SCALE: 1" = 300'	JOB NO.: 081-011-00
DWG. NAME: 08101100V-2025-EH-ALVIN-STRIP-REV_3.dwg	DRAWING NO.: NONE	