

April 14, 2026

Dr. Tarron Richardson
City Manager
City of Iowa Colony
3144 Meridiana Parkway
Iowa Colony, TX 77583

Re: Professional Services Agreement for Design Services for the Water System Interconnect
2025 Bond Project, Iowa Colony, TX

Dear Dr. Richardson,

Adico, LLC ("Adico") is pleased to submit this proposal to perform professional engineering design services to the City of Iowa Colony ("Client") for providing design services for Waterline Extension to the East Water Plant within Iowa Colony.

PROJECT UNDERSTANDING

The City of Iowa Colony is required to interconnect the water system previously constructed by BCMUD 32 and BCMUD 55 to the proposed East Water Plant that is currently in design. This project will enhance system redundancy, improve distribution pressure, and provide a critical secondary feed to serve existing and future customers within the Iowa Colony service area.

SCOPE OF SERVICES

Adico will provide the services specifically set forth below.

Phase 1 — Preliminary Engineering & Data Collection

- Field assessment and utility conflict identification along the proposed alignment.
- Review of existing GIS records, as-built drawings, and hydraulic model data.
- Hydraulic analysis to confirm pipe sizing, pressure requirements, and system performance.
- Preliminary alignment study with up to three (3) route alternatives evaluated.
- Geotechnical coordination and soil borings recommendation (borings by Owner or subconsultant)
- Preliminary Opinion of Probable Construction Cost (OPCC)
- Presentation of preliminary findings to Owner for alignment selection

Phase 2 — Final Design & Permitting

- Preparation of 60% and 90% design submittal drawings for Owner review and comment
- Final construction documents (plan & profile sheets, details, specifications) at 100%
- Design of all appurtenances including gate valves, blow-offs, air release valves, and meter vaults
- Coordination of road bore/jack-and-bore crossings for major roadways as required
- Permitting submittals to TCEQ for waterline extension/interconnect approval
- ROW and easement exhibits for acquisition (if required)
- Coordination with Brazoria County, TxDOT, and other authorities having jurisdiction

- Updated Engineer's Opinion of Probable Construction Cost

Phase 3 — Bidding & Construction Administration

- Preparation and distribution of bid documents through Owner's procurement process
- Respond to contractor Requests for Information (RFIs) during bidding period
- Bid tabulation and recommendation of award
- Construction administration including submittal review and field observation visits
- Review of pay applications and change orders
- Final walk-through inspection and punch list preparation
- Record drawing preparation based on contractor redlines

Assumptions

- Project length is approximately 4,300 LF of waterline (8-inch to 16-inch diameter)
- The Owner or a separate subconsultant will provide survey and legal descriptions for easements if required.
- One (1) primary project alignment will be carried through final design following Owner selection

Exclusions

- Land/right-of-way acquisition services or legal representation
- Environmental studies (wetlands delineation, NEPA documentation, cultural resources)
- Subsurface utility engineering (SUE) — available as an additional service
- Construction materials testing and inspection

Project Schedule

The following schedule is estimated from Notice to Proceed (NTP). Schedule is contingent on timely Owner review, agency response times, and permitting duration.

Milestone	Duration (Weeks)
Notice to Proceed / Project Kickoff	1 Week
Phase 1: Preliminary Engineering & Alignment Study	6 Weeks
Phase 2: 60% Design Submittal	4 Weeks
Phase 2: 90% Design & Permitting Submittal	4 Weeks
TCEQ / Agency Review & Approval	12-16 Weeks
Phase 2: 100% Final Construction Documents	2 Weeks
Phase 3: Bidding Period	6 Weeks
Phase 3: Construction (Est.)	16–20 Weeks

COMPENSATION:

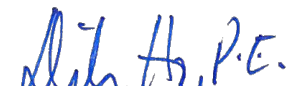
Compensation for this assignment shall be in accordance with this letter agreement for Engineering Services executed between the Owner and Adico, LLC. Billing for this assignment will be a monthly invoice based on a total percentage of effort provided. Based on this agreement and the scope of work described above, we recommend that a **Total Professional Services Fee Not to Exceed \$107,000** be established.

Task	Lump Sum Fee
Phase 1: Preliminary Engineering & Data Collection	\$21,540
Phase 2: Final Design and Permitting	\$48,465
Phase 3: Bidding	\$7,539
Construction Administration	\$19,386
Construction Inspection	\$10,770
TOTAL PROPOSED PROFESSIONAL FEES	\$107,000
Other Services:	
Geotechnical Investigation: Budget only	\$7500

Adico, LLC is pleased to submit this proposal and we appreciate the opportunity to provide these services for you. We will consider your acceptance below as our authorization to proceed. Please return one signed copy for our files.

Sincerely,

Adico, LLC
TBPE Firm No. 16423


By: Dinh V. Ho, P.E.,

4/14/2026
Date

Accepted: _____
Date

EXHIBIT 'A'

**ADICO, LLC
SCHEDULE OF HOURLY RATES**

EFFECTIVE JANUARY 2026

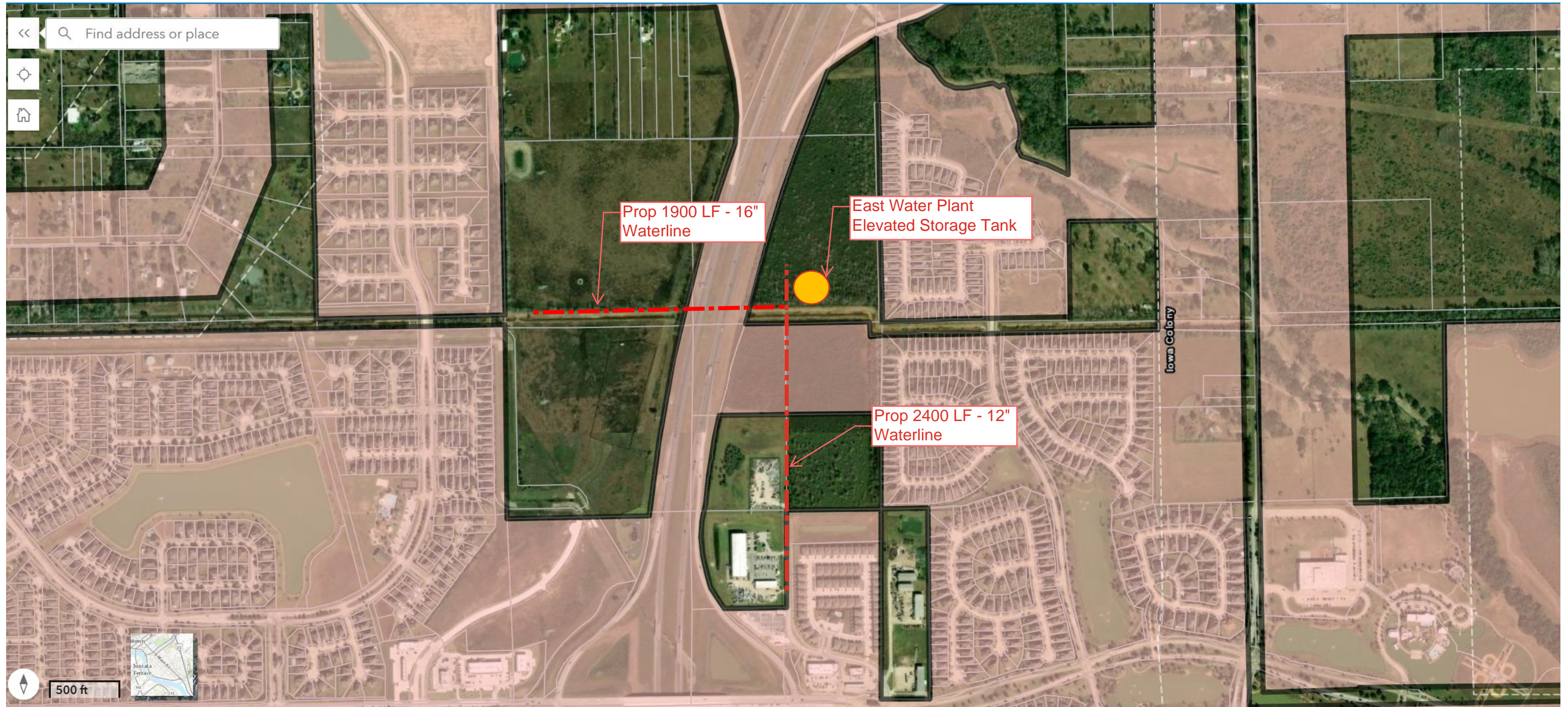
<u>DESCRIPTION / TITLE</u>	<u>HOURLY RATES</u>
Principals/PMs	
Principals, Directors	\$285.00
Sr. Project Managers	\$245.00
Project Managers	\$210.00
Project Coordinator	\$135.00
Engineers/Designers	
Engineer I	\$130.00
Engineer II	\$150.00
Sr. Engineer	\$195.00
Designer	\$115.00
Designer II	\$130.00
Cadd Technicians	\$110.00
Construction Management	
Senior Construction Inspector	\$145.00
Construction Inspector	\$125.00
Administrative Support	
Clerical/Administrative Staff	\$85.00

IN HOUSE REPRODUCTION COSTS (NO MARK-UP INCLUDED):

Xerox	\$ 0.40 per Copy (8 1/2" x 11")
Xerox Prints	\$6.00 per Square Foot

Subconsultants and other miscellaneous expenses at cost plus 10%

City of Iowa Colony 2025 CO Bonds - Waterline Interconnect





CITY OF IOWA COLONY
Water System Interconnect
Opininon of Probable Construction Cost

Adico, LLC - Consulting Engineers

CO Bond Project 4
 Date: 4/9/2026
 Prepared By: DVH
 Checked By: DVH
 Projection: 2026

Project Name: COIC Waterline Interconnect across SH 288

Description: Interconnect Waterline System from BCMUD 55 to BCMUD 32

ITEM NO.	DESCRIPTION	QUANTITY	UNIT	UNIT PRICE	TOTAL ITEM COST
1.	16" Waterline (all depths)	1,900	LF	\$120	\$228,000
2.	12" Bore with Casing	350	LF	\$400	\$140,000
3.	12" Waterline (all depths)	2,400	LF	\$65	\$156,000
4.	12" Bore	600	LF	\$120	\$72,000
5.	16" Gate Valves	4	LF	\$7,500	\$30,000
6.	12" Gate Valves	8	LF	\$3,500	\$28,000
7.	Fire Hydrant Assembly	12	LF	\$4,500	\$54,000
8.	Wet Connection	2	EA	\$5,000	\$10,000
9.	Canal Crossing (60" RCP) with access road	1	LS	\$40,000	\$40,000
10.	Mobilization & Bonds	1	LS	\$35,000	\$35,000
Subtotal:					\$718,000
Contingency (20%):					\$143,600
Engineering (15%):					\$107,700
Total:					\$969,300