

Tuesday, December 31, 2024

Ashley Waggoner  
EHRA Engineering  
10011 Meadowglen Lane  
Houston, TX 77042  
Email: [awaggoner@ehra.team](mailto:awaggoner@ehra.team)

Re: Ellwood Karsten Boulevard Phase 2 Street Dedication Preliminary Plat  
Letter of Recommendation to Approve  
COIC Project No. 5254  
Adico, LLC Project No. 16007-2-405

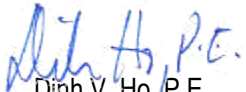
Dear Ms. Waggoner:

On behalf of the City of Iowa Colony, Adico, LLC has reviewed the second submittal of Ellwood Karsten Boulevard Phase 2 Street Dedication Preliminary Plat, received on or about December 30, 2024. The review of the plat is based on the City of Iowa Colony Subdivision Ordinance dated August 2002, and as amended.

Based on our review, we have no objection to the preliminary plat as resubmitted on December 30, 2024. Please provide ten (10) prints of the plat to Kayleen Rosser, City Secretary, by no later than January 2, 2025, for consideration at the January 7, 2025, Planning and Zoning meeting.

Should you have any questions, please do not hesitate to call our office.

Sincerely,  
Adico, LLC



Dinh V. Ho, P.E.  
TBPE Firm No. 16423

Cc: Kayleen Rosser, COIC  
Robert Hemminger, COIC  
File: 16007-2-405

GENERAL NOTES:

- 1. Bearing orientation is based on the Texas State Plane Coordinate System of 1983, South Central Zone as determined by GPS measurements.
2. The Coordinates shown hereon are Texas South Central Zone No. 4204 state plane grid coordinates (NAD 83) and may be brought to surface by applying the following scale factor: 0.99986742185.
3. According to the Federal Emergency Management Agency Flood Insurance Rate Map, Brazoria County, Texas, Community Panel No. 4803902120K, dated December 30, 2020, the property lies within Zone AE, Shaded Zone X, and Floodway
This flood statement does not imply that the property or structures thereon will be free from flooding or flood damage. On rare occasions floods can and will occur and flood heights may be increased by man-made or natural causes. The location of the flood zone was determined by scaling from said FEMA map. The actual location, as determined by elevation contours, may differ. Edminster, Hinshaw, Russ & Associates, Inc. d/b/a EHRA, assumes no liability as to the accuracy of the location of the flood zone limits. This flood statement shall not create liability on the part of Edminster, Hinshaw, Russ & Associates, Inc. d/b/a EHRA.

- 5. The property subdivided in the foregoing plat lies in Brazoria County, the City of Iowa Colony, Brazoria County M.U.D. No. 57, and Brazoria County Drainage District #5.
6. Property within the boundaries of this plat and adjacent to any drainage easement, ditch, gully, creek, or natural drainage way shall hereby be restricted to keep such drainage ways and easements clear of fences, buildings, plantings, and other obstructions.
7. Contour lines shown hereon are based on the NGS Benchmark E 306 being noted hereon.
8. Preliminary, this document shall not be recorded for any purpose and shall not be used or relied upon as a final survey document.
9. The approval of the preliminary plat shall expire twelve (12) months after City Council approval unless the final plat has been submitted for final approval during that time. An extension of time may be given at the discretion of the City Council for a single extension period of six (6) months.
10. This plat is subject to the Rally 288 West PUD Ordinance No. 2022-09.
11. Drainage plans to be provided prior to final plat submittal.
12. One foot reserve dedicated to the public in fee as a buffer separation between the side or ends of streets where such streets abut adjacent property, the condition of such dedication being that when the adjacent property is subdivided or re-subdivided in a record plat the one foot reserve shall hereupon become vested in the public for street right-of-way purposes and the fee title there shall revert to and revert in the dedicant, his heirs, assigns, or successors.
13. The 40' of right-of-way recorded under Volume 2, Page 113 of the Brazoria County Plat Records as shown on the Plat of Emigration Land Co. Subdivision, will be abandoned by plat. A new 20' public access easement is to be established and will serve as access to Brazoria County Municipal Utility District Number 57 Lift Station Number 3 and to the property owner immediately to the south.
14. Final Plat is subject to the conditions and approval of the General Plan and adjacent plats.

BENCHMARK(S):
NGS MONUMENT # E 306 DISK SET IN TOP OF CONCRETE MONUMENT, LOCATED 2.0 MILES WEST OF MANVEL, 2 MILES WEST ALONG THE GULF, COLORADO AND SANTA FE RAILWAY FROM THE STATION AT MANVEL, BRAZORIA COUNTY, 0.2 MILE WEST OF A SHELL-ROAD CROSSING, 5-12 FEET NORTHWEST OF MILE POLE 38, 39 FEET SOUTH OF THE SOUTH RAIL, 33 FEET NORTH OF THE CENTERLINE OF A DIRT ROAD, 6.7 FEET NORTH OF THE RIGHT-OF-WAY FENCE, 3 FEET WEST OF A WHITE WOODEN WITNESS POST AND SET IN THE TOP OF A CONCRETE POST ABOUT FLUSH WITH THE GROUND. ELEV.=52.00 (NAVD 88) 1991 ADJUSTMENT

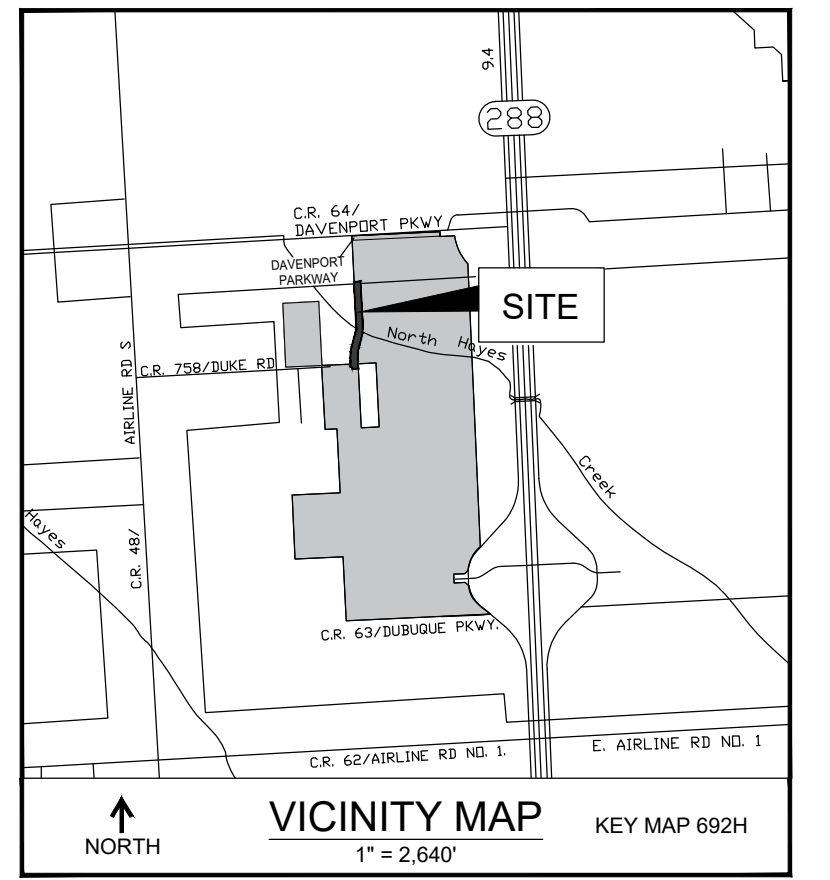
CURVE TABLE
CURVE RADIUS ARC LENGTH CHORD BEARING CHORD LENGTH
C1 540.00' 177.01' N 06°37'37" E 176.22'
C2 460.00' 151.96' S 06°33'15" W 151.27'
C3 250.00' 5.14' N 81°26'43" E 5.13'
C4 560.00' 184.99' N 06°33'15" E 184.10'

LINE TABLE
LINE ANGLE DISTANCE
L1 N 87°14'00" E 90.00'
L2 S 02°54'34" E 81.14'
L3 S 03°03'49" E 40.00'
L4 N 02°54'34" W 40.18'

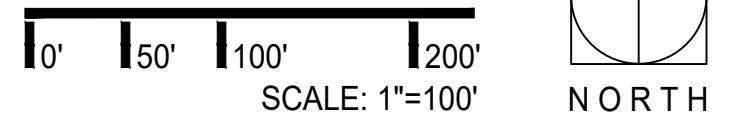
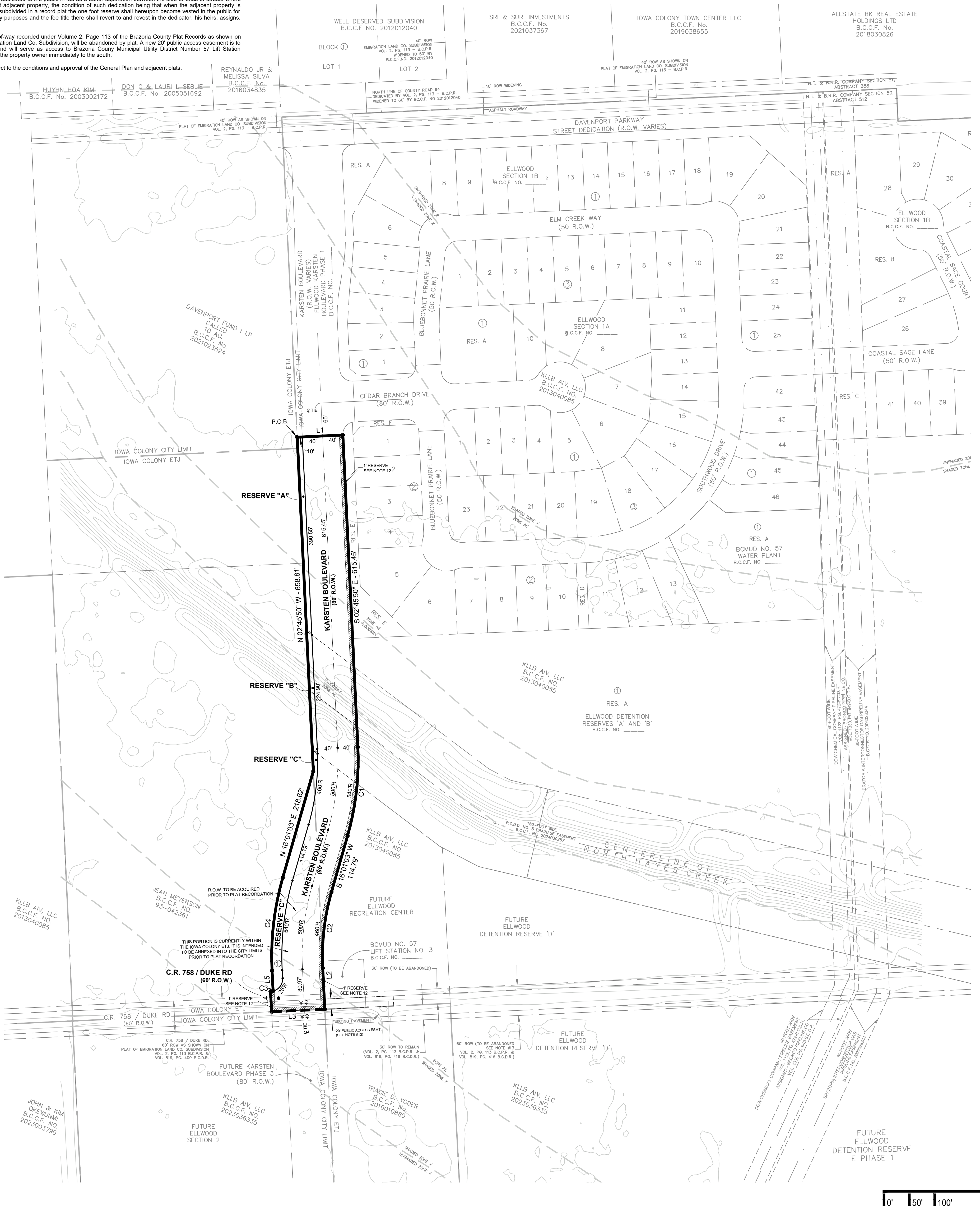
LAND USE TABLE
PLAT SF-60's SF-50's COMM. INST. UTILITIES & PARKS & RECREATION TOTAL
BCMUD NO. 57 LIFT STATION NO. 3 0.18 AC. 0.18 AC.
BCMUD NO. 57 WATER PLANT 1.34 AC. 1.34 AC.
DAVENPORT PKWY. ST. DEDICATION 1.48 AC. 1.48 AC.
ELLMWOOD DETENTION RESERVES 'A' AND 'B' 24.76 AC. 24.76 AC.
ELLMWOOD DETENTION RESERVE 'C' 9.11 AC. 9.11 AC.
ELLMWOOD KARSTEN BLVD. PH. 1 ST. DEDICATION 1.58 AC. 1.58 AC.
ELLMWOOD KARSTEN BLVD. PH. 2 ST. DEDICATION 2.12 AC. 0.34 AC. 2.46 AC.
ELLMWOOD KARSTEN BLVD. PH. 3 ST. DEDICATION 2.82 AC. 0.03 AC. 2.85 AC.
ELLMWOOD SECTION 1A 0.44 AC. 1.71 AC. 0.51 AC. 2.66 AC.
ELLMWOOD SECTION 1B 4.00 AC. 11.34 AC. 0.37 AC. 15.71 AC.
ELLMWOOD SECTION 2 4.82 AC. 1.48 AC. 6.30 AC.
ELLMWOOD SECTION 3 8.71 AC. 4.61 AC. 1.47 AC. 14.79 AC.
ELLMWOOD RECREATION RESERVE 1.77 AC. 1.77 AC.
TOTAL 13.15 AC. 22.48 AC. 9.11 AC. 1.52 AC. 8.00 AC. 30.73 AC. 84.99 AC.
(15.5%) (26.5%) (10.7%) (1.8%) (9.4%) (36.2%) (100%)

PARK LAND TABLE
PLAT ACREAGE
BCMUD NO. 57 LIFT STATION NO. 3 0.00 AC.
BCMUD NO. 57 WATER PLANT 0.00 AC.
DAVENPORT PKWY. ST. DEDICATION 0.00 AC.
ELLMWOOD DETENTION RESERVES 'A' AND 'B' 1.66 AC.
ELLMWOOD DETENTION RESERVE 'C' 0.00 AC.
ELLMWOOD KARSTEN BLVD. PH. 1 ST. DEDICATION 0.00 AC.
ELLMWOOD KARSTEN BLVD. PH. 2 ST. DEDICATION 0.00 AC.
ELLMWOOD KARSTEN BLVD. PH. 3 ST. DEDICATION 0.00 AC.
ELLMWOOD SECTION 1A 0.51 AC.
ELLMWOOD SECTION 1B 0.37 AC.
ELLMWOOD SECTION 2 0.47 AC.
ELLMWOOD SECTION 3 0.83 AC.
ELLMWOOD RECREATION RESERVE 1.77 AC.
TOTAL 5.61 AC.
1) PARK LAND IN DETENTION RESERVES IS CALCULATED AT 50% OF THE AREA OF THE MAINTENANCE BERM. IF MAINTENANCE BERM INCLUDES TRAILS, IS AN AVERAGE MINIMUM WIDTH OF 30' AND A MINIMUM WIDTH OF 20', AND HAS SIDE SLOPES THAT DO NOT EXCEED A 5:1 RATIO.
2) ALL OTHER PARK LAND IS CALCULATED AS THE TOTAL OF RESERVES WITH A "RECREATION" RESTRICTION.

RESERVE TABLE
RESERVE RESTRICTIONS SQ. FT. ACREAGE
A LANDSCAPE, OPEN SPACE, ROADWAY/ACCESS & UTILITY PURPOSES 3,883.75 0.09
B DRAINAGE 2,344.72 0.05
C LANDSCAPE, OPEN SPACE, ROADWAY/ACCESS & UTILITY PURPOSES 8,638.28 0.20
TOTAL 14,866.75 0.34



OWNER CONTACT INFORMATION
KLLB AIV LLC, A DELAWARE LIMITED LIABILITY COMPANY
10235 WEST LITTLE YORK, SUITE 200
HOUSTON, TX 77040
281-560-6600



Ellwood Karsten Boulevard Phase 2 Street Dedication Preliminary Plat
Being a subdivision of 2.46 acres out of the H.T. & B.R.R. Co. Survey, Section 50, A-512, and being out of Lots 461, 462, 467, & 468 of the Emigration Land Company Subdivision in the City of Iowa Colony and ETJ, Brazoria County, Texas.

1 Block and 1 Reserve
Owner: KLLB AIV LLC, a Delaware Limited Liability Company

December 6, 2024

EHRA logo and contact information: 10011 MEADOWGLEN LANE HOUSTON, TEXAS 77042 713.784.4500 WWW.EHRATEAM.COM TBPE No. F-726 TBPLS No. 10092300

EHRA JOB NO. 221-022-101 No warranty or representation of intended use, design or proposed improvements are made herein. All Plans for land or facilities are subject to change without notice.

P:\24-022-101\Plat\PLAT\Ellwood Karsten Blvd Ph. 2 Street Dedication Rev. 3.dwg Dec. 26, 2024 - 5:15pm Edited by: aecogener