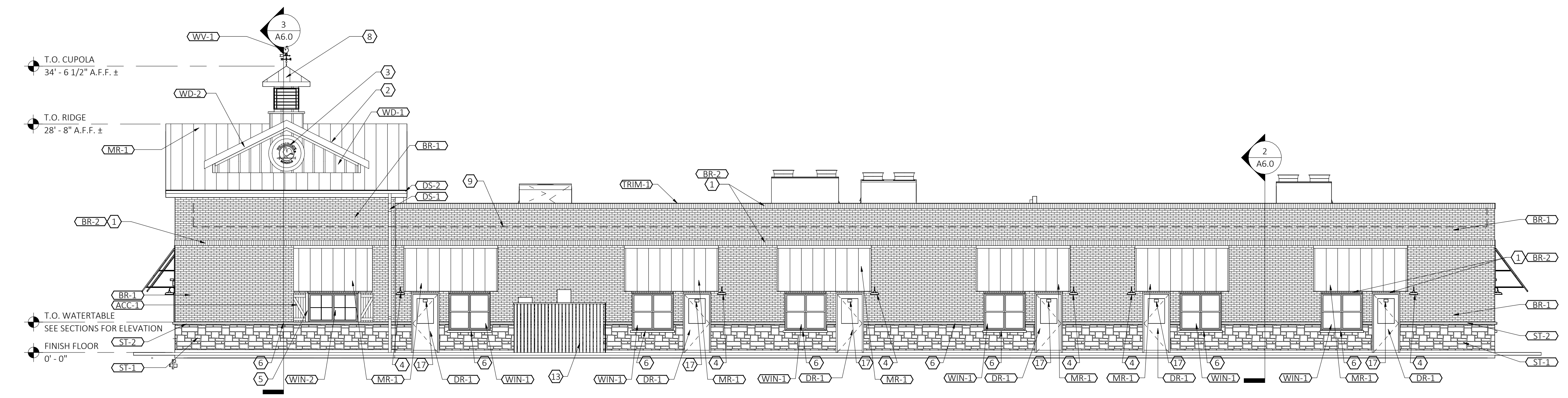
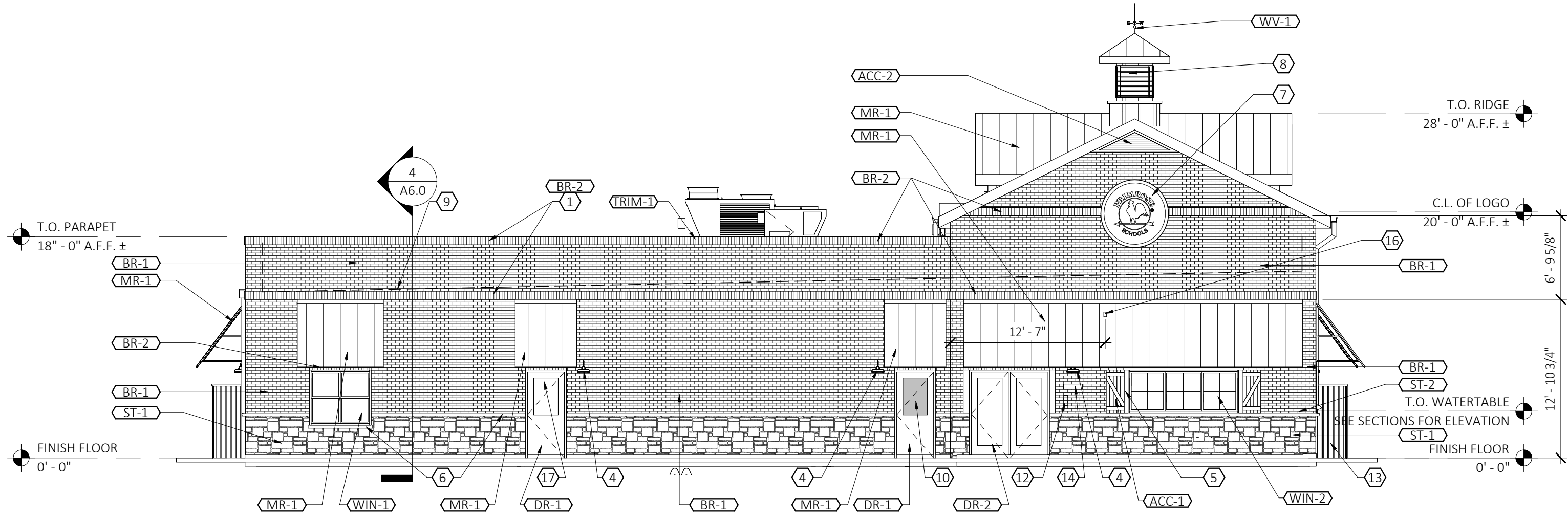


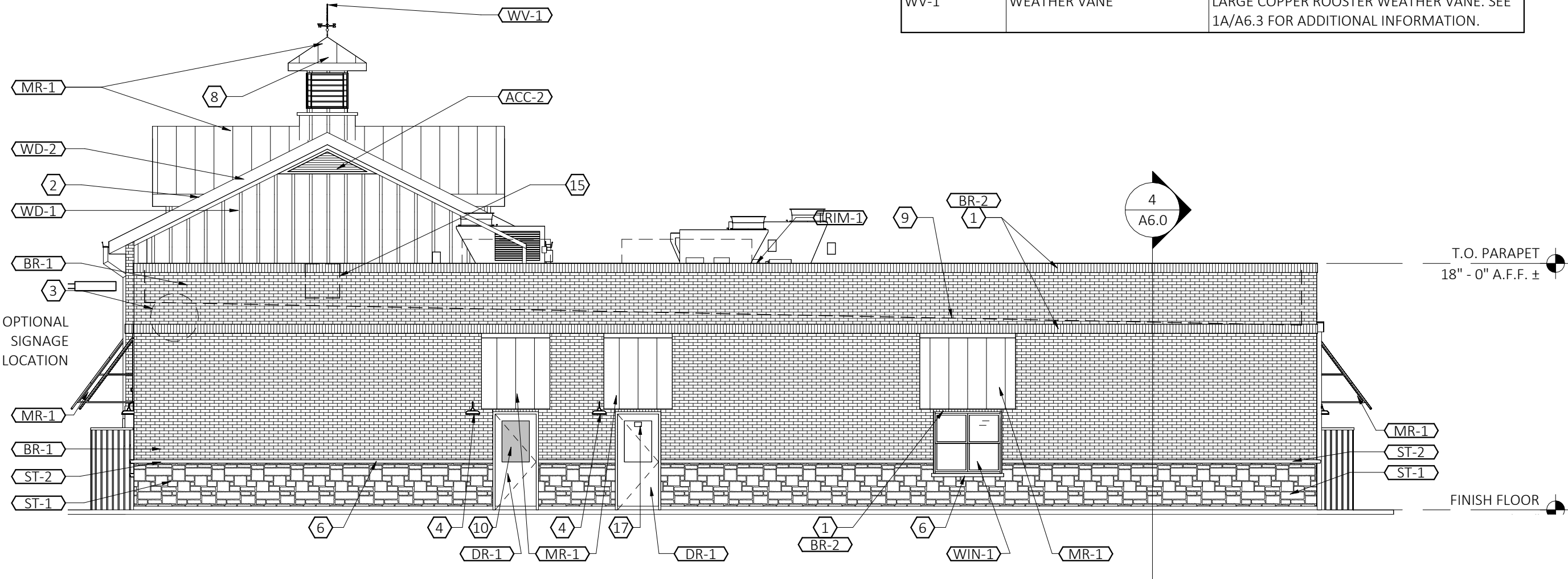
1  
A4.0 REAR (WEST) ELEVATION  
SCALE: 1/8" = 1'-0"



2  
A4.0 FRONT (EAST) ELEVATION  
SCALE: 1/8" = 1'-0"



3  
A4.0 RIGHT SIDE (SOUTH) ELEVATION  
SCALE: 1/8" = 1'-0"



4  
A4.0 LEFT SIDE (NORTH) ELEVATION  
SCALE: 1/8" = 1'-0"

## ELEVATION KEYED NOTES (X)

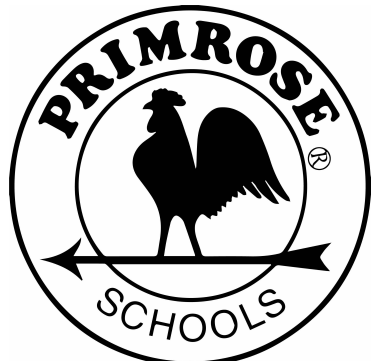
- BRICK SOLDIER COURSE, BR-2
- 5/4 x 6 TRIMBOARD, WD - 2
- 42" ROUND LED LIGHTED SIGN (INTERNALLY LIT). SEE 6/A2.4 FOR MOUNTING DETAIL.
- LIGHTING, REFER TO ELECTRICAL DRAWINGS.
- TRIMBOARD AT OFFICE & CONF ROOM WINDOWS: VERT TO BE 5/4 x 4, BOTH WD-3
- STONE SILL
- 60" ROUND LED LIGHTED SIGN (INTERNALLY LIT). SEE 11/A2.4 FOR MOUNTING DETAIL
- CUPOLA WITH WEATHERVANE. PAINT ALL SURFACES TO MATCH "ARCTIC WHITE", ROOF TO BE MR - 1 REFER TO 1A/A6.3 FOR CONSTRUCTION.
- ROOF LINE BEHIND PARAPET WALL.
- GLAZING TO RECIEVE WINDOW FILM, TINT - 1. SEE FINISH SCHEDULE SHEET A2.2
- DOWNSPOUTS TIED INTO UNDERGROUND STORM SEWER BELOW GRADE.
- KNOX BOX OR APPROVED EQUAL. COORDINATE LOCATION WITH LOCAL FIRE OFFICIAL
- 6' - 0" HIGH SOLID VINYL FENCE WITH (2) 3' - 0"W GATES. COLOR TO MATCH "ARCTIC WHITE"
- BEIGE ALUMINUM PLAQUE W/6" REFLECTIVE BLACK VINYL NUMBERS, PROVIDED BY 1 HOUR SIGN. COORDINATE LOCATION WITH LOCAL FIRE OFFICIAL.
- ATTIC ACCESS DOOR CENTERED ON GABLE WALL BEYOND. REFER TO DETAIL 3/A6.2 FOR ADDITIONAL INFORMATION.
- ELECTRICAL OUTLET (UNDER AWNING). REFER TO ELECTRICAL DRAWINGS.
- 4" REFLECTIVE NUMBERS. SEE SIGN PACKAGE.

## EXTERIOR FINISH LEGEND

MARK	DESCRIPTION	SPECIFICATION
ACC-1	SHUTTERS	EKENA MILLWORK: TWO BATTEN W/ Z-BAR BOARD & BATTEN COMPOSITE SHUTTERS. 3' - 6" T X 1' - 6" W SHUTTERS TO BE ORDERED PRIMED, PAINT TO MATCH "AGED PEWTER"
ACC-2	LOUVERS	AMERICAN LOUVER & VENT COMPANY, TGV81260 OR APPROVED EQUAL. COLOR: ARCTIC WHITE
BR-1	BRICK	GLEN GERY; CASTILE GRAY VELOUR; MORTAR COLOR: LIGHT GRAY
BR-2	BRICK SOLDIER COURSE	GLEN GERY; CASTILE GRAY VELOUR; MORTAR COLOR: LIGHT GRAY
DR-1	HALF LITE DOORS	EXTERIOR INSULATED METAL HALF LITE DOOR; COLOR (INTERIOR AND EXTERIOR): WHITE. SEE DOOR SCHEDULE FOR ADDITIONAL INFORMATION.
DR-2	FULL LITE DOOR	EXTERIOR INSULATED METAL HALF LITE DOOR; COLOR (INTERIOR AND EXTERIOR): WHITE. SEE DOOR SCHEDULE FOR ADDITIONAL INFORMATION.
DS-1	SCUPPERS, DOWNSPOUTS @ GABLES ROOF	BM COLOR REVIEW # OC-21 WINTER WHITE. (COLOR TO MATCH "ARCTIC WHITE"
DS-2	GUTTERS ALONG METAL ROOF	COLOR: TO MATCH "MR-1"
MR-1	METAL ROOF	BERRIDGE CEE-LOCK SYSTEM. COLOR: DARK BRONZE.
ST-1	STONE WAINSCOT	LONESTAR STONE - LIBERTY CLASSIC - AUTUMN GROUT. LIGHT BUFF COLOR: MORTOR
ST-2	STONE CAP @ WAINSCOT	STONE SILL COLOR: COBBLESTONE
TRIM	MISC METAL TRIM & FLASHING	ANY MISC METAL FLASHING AND TRIM NOT NOTED AS TRIM-1 OR TRIM-2 SHOULD MATCH COLOR OF ADJACENT SURFACE. CONTACT ARCHITECT FOR DIRECTION AS REQ'D.
TRIM-1	MTL COPING @ PARAPET WALLS	BM COLOR REVIEW # OC-21 WINTER WHITE. (COLOR TO MATCH "ARCTIC WHITE"
TRIM-2	MTL TRIM @ METAL ROOF	COLOR: TO MATCH "MR-1"
WD-1	BOARD & BATTEN SIDING	HARDIE PANEL (4' X 10') & HARDIE TRIM BATTEN BOARDS (2 1/2" WIDE @ 2'-0" O.C.) FINISH: SMOOTH COLOR: ARCTIC WHITE (PRIMED AND FIELD PAINTED)
WD-2	TRIM (FASCIA TRIM @ METAL ROOF)	HARDIE TRIM BOARDS, 5/4 NT3 SMOOTH, VARIOUS WIDTHS AS REQUIRED (SEE ELEVATIONS), COLOR: PAINT TO MATCH MR-1 (PRIMED AND FIELD PAINTED)
WIN-1	VINYL WINDOWS	PLY GEM 1100 SINGLE HUNG WINDOW. COLOR: WHITE. SEE WINDOW SCHEDULE
WIN-2	VINYL WINDOWS @ OFFICE	PLY GEM 1100 PICTURE WINDOW. COLOR: WHITE. SEE WINDOW SCHEDULE
WV-1	WEATHER VANE	LARGE COPPER ROOSTER WEATHER VANE. SEE 1A/A6.3 FOR ADDITIONAL INFORMATION.

PRIMROSE SCHOOLS

9828 KARSTEN BLVD  
IOWA COLONY, TX 77583



PRIMROSE SCHOOL FRANCHISING COMPANY  
3200 WINDY HILL ROAD, SUITE 1200 E  
ATLANTA, GEORGIA 30339-5640  
THESE DRAWINGS AND THE DESIGN REPRESENTED HEREIN ARE THE EXCLUSIVE PROPERTY OF PRIMROSE SCHOOL FRANCHISING CO. REPRODUCTION OR ANY USE OF THESE DRAWINGS OTHER THAN FOR THE PROJECT INTENDED WITHOUT THE EXPRESS WRITTEN CONSENT OF PRIMROSE SCHOOL FRANCHISING CO. IS PROHIBITED. ANY UNAUTHORIZED USE WILL BE SUBJECT TO LEGAL ACTION.

Date

CONSTR. DOC. & REVISIONS  
Description

No.

CASCO DIVERSIFIED CORPORATION  
ARCHITECTURAL  
CORP. LICENSE NO: BR98  
EXP. DATE: 01/31/26



06/09/2025

Professional of Record:  
KEVIN WILLIAM HARMS  
LICENSE NO: 20001  
EXP. DATE: 04/30/26

Drawn/Checked MTT / MS  
Project Number 2303618  
Bid Date --/--/--  
Permit Date 06/09/25  
For Construction --/--/--

EXTERIOR  
ELEVATIONS

A4.0