

Thursday, December 21, 2023

Brad Sweitzer  
EHRA Engineering  
10011 Meadowglen Lane  
Houston, TX 77042  
Email: [bsweitzer@ehra.team](mailto:bsweitzer@ehra.team)

Re: Ellwood Detention Reserve "D" Preliminary Plat  
Letter of Recommendation to Approve  
COIC Project No. 3346  
Adico, LLC Project No. 16007-2-340

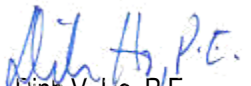
Dear Mr. Sweitzer:

On behalf of the City of Iowa Colony, Adico, LLC has reviewed the second submittal for Ellwood Detention Reserve "D" Preliminary Plat received on or about December 17, 2023. The review of the plat is based on the City of Iowa Colony Subdivision Ordinance dated August 2002, and as amended.

Based on our review, we have no objections to the plat as resubmitted on December 17, 2023. Please provide ten (10) folded prints of the plat to Kayleen Rosser, City Secretary, by no later than Wednesday, December 27, 2023, for consideration at the January 2, 2023, Planning and Zoning meeting.

Should you have any questions, please do not hesitate to call our office.

Sincerely,  
Adico, LLC

  
Dinh V. Ho, P.E.  
TBPE Firm No. 16423

Cc: Kayleen Rosser, COIC  
Robert Hemminger, COIC

**GENERAL NOTES:**

- Bearing orientation is based on the Texas State Plane Coordinate System of 1983, South Central Zone as determined by GPS measurements.
- The Coordinates shown hereon are Texas South Central Zone No. 4204 state plane grid coordinates (NAD 83) and may be brought to surface by applying the following scale factor: 0.9998742185.
- According to the Federal Emergency Management Agency Flood Insurance Rate Map, Brazoria County, Texas, Community Panel No. 4803920110K, dated December 30, 2020, the property lies within Zone AE, Shaded Zone X, and Unshaded Zone X.  
This flood statement does not imply that the property or structures thereon will be free from flooding or flood damage. On rare occasions floods can and will occur and flood heights may be increased by man-made or natural causes. The location of the flood zone was determined by scaling from said FEMA map. The actual location, as determined by elevation contours, may differ. Edminster, Hinshaw, Russ & Associates, Inc. d/b/a EHRA, assumes no liability as to the accuracy of the location of the flood zone limits. This flood statement shall not create liability on the part of Edminster, Hinshaw, Russ & Associates, Inc. d/b/a EHRA.
- B.C.C.F. indicates Brazoria County Clerk's File.  
S.L. indicates Building Line.  
D.E. indicates Drainage Easement.  
E.A. indicates Emergency Access Easement.  
M.H. indicates Manhole.  
P.G. indicates Page.  
P.A.E. indicates Permanent Access Easement.  
P.O.B. indicates Point of Beginning.  
P.U.E. indicates Public Utility Easement.  
P.V.T. indicates Private.  
R. indicates Radius.  
R.O.W. indicates Right-Of-Way.  
S.S.E. indicates Sanitary Sewer Easement.  
S.T.M.S.E. indicates Storm Sewer Easement.  
U.E. indicates Utility Easement.  
V.O.L. indicates Volume.  
W.L.E. indicates Water Line Easement.  
X indicates change in street name.
- The property subdivided in the foregoing plat lies in Brazoria County, the City of Iowa Colony, Brazoria County M.U.D. No. 57, and Brazoria County Drainage District #5.
- Property within the boundaries of this plat and adjacent to any drainage easement, ditch, gully, creek, or natural drainage way shall hereby be restricted to keep such drainage ways and easements clear of fences, buildings, plantings, and other obstructions.
- This plat is subject to the Rally 288 West PUD Ordinance No. 2022-09.
- Contour lines shown hereon are based on the NGS Benchmark E 306 being noted hereon.
- Preliminary, this document shall not be recorded for any purpose and shall not be used or viewed or relied upon as a final survey document.
- The approval of the preliminary plat shall expire twelve (12) months after City Council approval unless the final plat has been submitted for final approval during that time. An extension of time may be given at the discretion of the City Council for a single extension period of six (6) months.
- Drainage plans to be provided prior to final plat submittal.
- Reserve 'D' shall provide 1.13 acres of parkland as it complies with the requirements for areas within a detention reserve to be considered parkland.
- Final Plat is subject to the conditions and approval of the General Plan and adjacent plats.
- Reserve 'D' will be owned and maintained by Brazoria County M.U.D. No. 57.

**BRAZORIA COUNTY DRAINAGE DISTRICT NO. 5 NOTES:**

- Slab elevations (finished floor) shall be a minimum of 2 feet above natural grade.
- All drainage easements shown hereon shall be kept clear of fences, buildings, plantings and other obstructions to the operation and maintenance of drainage facilities.
- All property shall drain into the drainage easement only through an approved drainage structure.
- All drainage easements and detention pond reserves shown on this plat, will be maintained by the property owners and/or business owners; provided, however, and governmental entity have jurisdiction, including, without limitation, Brazoria County, Texas and Brazoria County Drainage District #5, shall have the right, but not the obligation to enter upon the drainage easements to perform maintenance operations at any time after the date hereof.
- The property identified in the foregoing plat lies within Brazoria County Drainage District #5.
- This rural subdivision employs a natural drainage system, which is intended to provide drainage for the subdivision that is similar to that which existed under pre-development conditions. Thus, during large storm events, ponding of water should be expected to occur in the subdivision to the extent it may have prior to development, but such ponding should not remain for an extended period of time.
- Land use within the subdivision is limited to an average imperviousness of no more than 72 percent. The drainage and/or detention system has been designed with the assumption that this average percent imperviousness will not be exceeded. If this percentage is to be exceeded, a replat and/or redesign of the system may be necessary.
- Other than shown hereon, there are no pipeline easements or pipelines within the boundaries of this plat.
- All storm water drainage pipes, culverts, tiles or other (includes driveway culverts) will be minimum 24" I.D. or equal.
- Dedicated drainage easement(s) granted to Brazoria County Drainage District #5 for drainage maintenance purposes shall include 45 feet top of bank, plus the sum (footage) of both ditch side slopes and channel bottom and 45 feet of bank on the opposite bank.
- Dedicated ingress/egress accesses are granted to Brazoria County Drainage District #5 (see District Resolution No. 2007-06 & 2007-07). Access will be gated and locked with Brazoria County Drainage District #5's lock.
- Prohibited use of "metal" pipe in storm water/sewer applications (See District Resolution No. 2007-08).
- Prohibited use of "rip rap" in storm water/sewer applications. (District Policy).
- Pipelines, utility lines and other crossing under any Brazoria County Drainage District #5 ditch require approval and permitting prior to construction.
- All dedicated storm water drainage and/or access easements to be granted to Brazoria County Drainage District #5 by the property owner will be initiated and recorded, at the property owner's expense, in Brazoria County, Texas with a "Recorded Document Number" affixed to said easement prior to final approval granted by Brazoria County Drainage District #5 Board of Commissioners.
- It will be the property owner's responsibility to verify if any Brazoria County Drainage District #5 "Dedicated" drainage easements are on or cross their property. If so, the property owner will comply as stated within the recorded easement.
- Project field start-up will start within 365 calendar days from date shown here. Continuous and reasonable field site work is expected. See Brazoria County drainage criteria manual section 1, Introduction; Sub-Section 1.5, Plat and Plan approval process, and drainage acceptance procedures; time limit for approval and Brazoria County Drainage District #5 Resolution 2011-1, allowable time(s) and procedures for starting-up approved projects.

**RESERVE TABLE**

RESERVE	RESTRICTIONS	SQ. FT.	ACREAGE
D	DETENTION, LANDSCAPE, OPEN SPACE, RECREATION & UTILITY PURPOSES	612,780.18	14.07

**LINE TABLE**

LINE	ANGLE	DISTANCE
L1	S 62°27'14" W	80.04'
L2	S 01°39'41" E	87.75'
L3	S 01°34'33" E	94.21'

**PARKLAND TABLE**

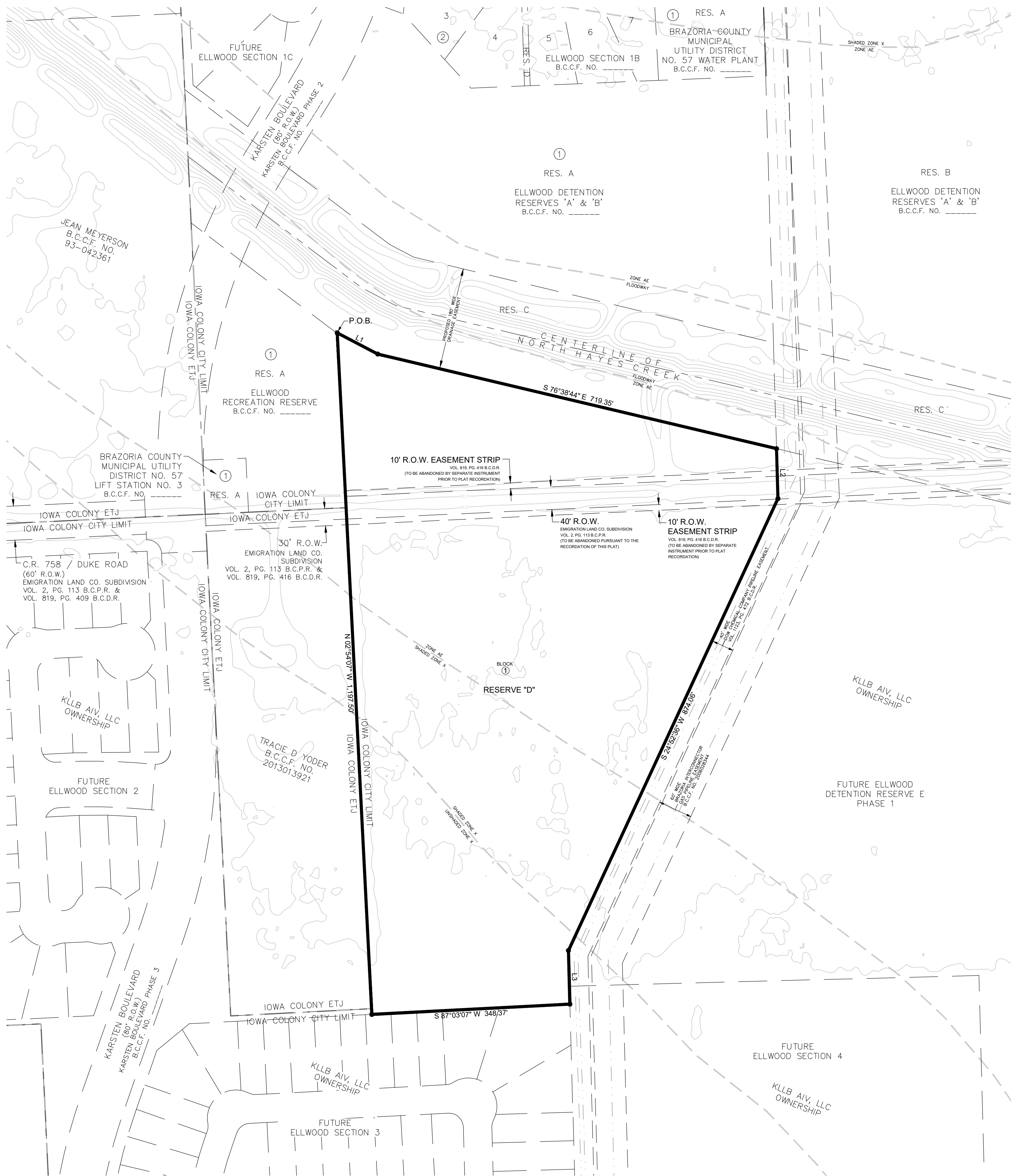
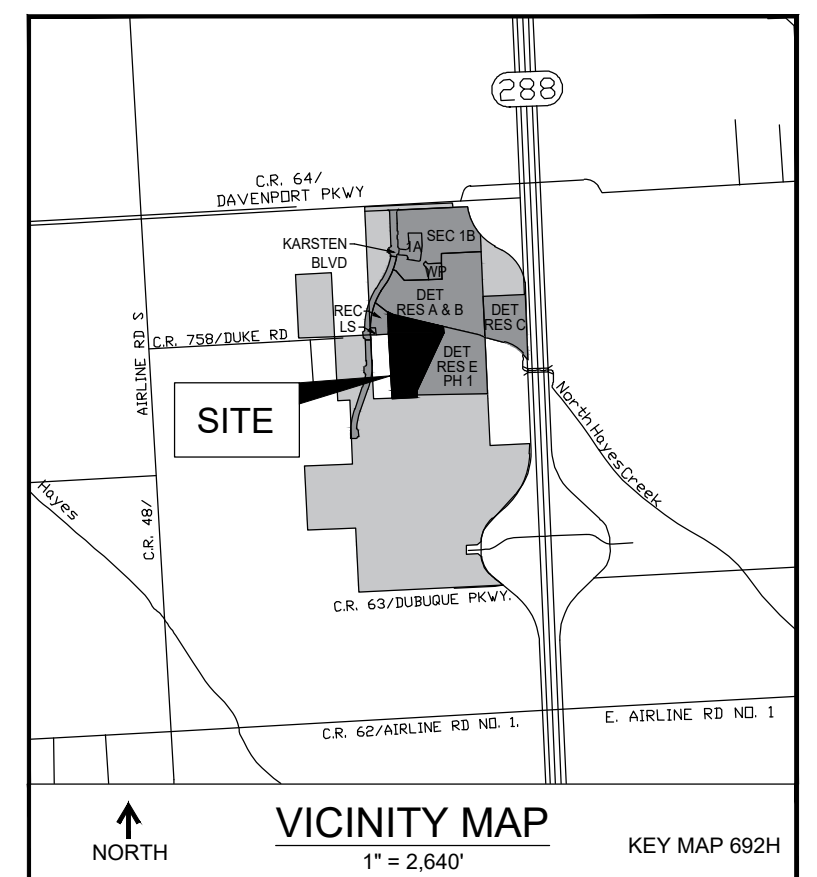
PLAT	ACREAGE
BCMUD NO. 57 LIFT STATION NO. 3	0.00 AC.
BCMUD NO. 57 WATER PLANT	0.00 AC.
DAVENPORT PKWY. ST. DEDICATION	0.00 AC.
ELLWOOD DETENTION RESERVES 'A' AND 'B'	1.60 AC.
ELLWOOD DETENTION RESERVE 'C'	0.00 AC.
ELLWOOD DETENTION RESERVE 'D'	1.13 AC.
ELLWOOD DETENTION RESERVE 'E' PH. 1	1.11 AC.
ELLWOOD KARSTEN BLVD. PH. 1 ST. DEDICATION	0.00 AC.
ELLWOOD KARSTEN BLVD. PH. 2 ST. DEDICATION	0.00 AC.
ELLWOOD KARSTEN BLVD. PH. 3 ST. DEDICATION	0.00 AC.
ELLWOOD RECREATION RESERVE	1.83 AC.
ELLWOOD SECTION 1A	0.00 AC.
ELLWOOD SECTION 1B	1.07 AC.
<b>TOTAL</b>	<b>6.74 AC.</b>

1) PARKLAND IN DETENTION RESERVES IS CALCULATED AT 50% OF THE AREA OF THE MAINTENANCE BERM. IF MAINTENANCE BERM INCLUDES TRAILS, IS AN AVERAGE MINIMUM WIDTH OF 3' AND A MINIMUM WIDTH OF 3', AND HAS SIDE SLOPES THAT DO NOT EXCEED A 1:1 RATIO.  
2) ALL OTHER PARKLAND IS CALCULATED AS THE TOTAL OF RESERVES WITH A "RECREATION" RESTRICTION.

**LAND USE TABLE**

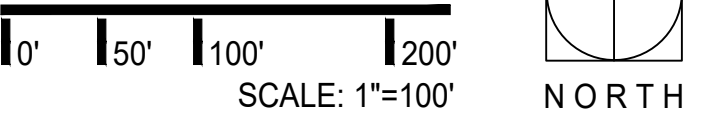
PLAT	SF - 60%	SF - 50%	COMM.	INST.	ARTERIALS & COLLECTORS/OPEN SPACE	PARKS & RECREATION	TOTAL
BCMUD NO. 57 LIFT STATION NO. 3	-	-	-	0.17 AC.	-	-	0.17 AC.
BCMUD NO. 57 WATER PLANT	-	-	-	1.03 AC.	-	-	1.03 AC.
DAVENPORT PKWY. ST. DEDICATION	-	-	-	1.67 AC.	-	-	1.67 AC.
ELLWOOD DETENTION RESERVES 'A' AND 'B'	-	-	-	-	-	24.70 AC.	24.70 AC.
ELLWOOD DETENTION RESERVE 'C'	-	-	9.11 AC.	-	-	-	9.11 AC.
ELLWOOD DETENTION RESERVE 'D'	-	-	-	-	-	14.07 AC.	14.07 AC.
ELLWOOD DETENTION RESERVE 'E' PH. 1	-	-	-	-	-	15.29 AC.	15.29 AC.
ELLWOOD KARSTEN BLVD. PH. 1 ST. DEDICATION	-	-	-	-	-	1.48 AC.	1.48 AC.
ELLWOOD KARSTEN BLVD. PH. 2 ST. DEDICATION	-	-	-	-	-	2.29 AC.	2.29 AC.
ELLWOOD KARSTEN BLVD. PH. 3 ST. DEDICATION	-	-	-	-	-	2.65 AC.	2.65 AC.
ELLWOOD RECREATION RESERVE	-	-	-	-	-	1.83 AC.	1.83 AC.
ELLWOOD SECTION 1A	0.51 AC.	1.28 AC.	-	-	-	-	1.79 AC.
ELLWOOD SECTION 1B	5.82 AC.	7.22 AC.	-	-	-	-	13.04 AC.
<b>TOTAL</b>	<b>6.33 AC. (10%)</b>	<b>8.50 AC. (13%)</b>	<b>9.11 AC. (14%)</b>	<b>1.20 AC. (2%)</b>	<b>0.09 AC. (0%)</b>	<b>60.36 AC. (88%)</b>	<b>93.69 AC. (100%)</b>

1) THIS TABLE TABULATES THE LAND USES WITHIN EACH PLAT FOR ZONING PURPOSES. NOT THE PERMITTED USES WITHIN EACH LAND USE.  
2) THIS TABLE INCLUDES ALL PRELIMINARY PLATS SUBMITTED AT THIS TIME.



**OWNER CONTACT INFORMATION**  
 KLLB AIV, LLC  
 10235 WEST LITTLE YORK, SUITE 200  
 HOUSTON, TX 77040  
 281-560-6600

**BENCHMARK(S):**  
 NGS MONUMENT # E 306 DISK SET IN TOP OF CONCRETE MONUMENT, LOCATED 2.0 MILES WEST OF MANVEL, 2 MILES WEST ALONG THE GULF, COLORADO AND SANTA FE RAILWAY FROM THE STATION AT MANVEL, BRAZORIA COUNTY, 0.2 MILE WEST OF A SHELL-ROAD CROSSING, 5-1/2 FEET NORTHWEST OF MILE POLE 38, 39 FEET SOUTH OF THE SOUTH RAIL, 33 FEET NORTH OF THE CENTERLINE OF A DIRT ROAD, 8.7 FEET NORTH OF THE RIGHT-OF-WAY FENCE, 3 FEET WEST OF A WHITE WOODEN WITNESS POST AND SET IN THE TOP OF A CONCRETE POST ABOUT FLUSH WITH THE GROUND.  
 ELEV=52.00 (NAVD '88) 1991 ADJUSTMENT



**Ellwood Detention Reserve 'D' Preliminary Plat**  
 Being a subdivision of 14.07 acres out of the H.T. & B.R.R. Co. Survey, Section 50, A-512, and being out of of Lots 468, 469, 471, 472, 474, & 475 of the Emigration Land Co. Subdivision, in the City of Iowa Colony, Brazoria County, Texas.

1 Block and 1 Reserve  
 Owner: KLLB AIV, LLC, a Texas Limited Partnership

December 7, 2023

**EHRA**  
 10011 MEADOWGLEN LANE  
 HOUSTON, TEXAS 77042  
 713.784.4500  
 WWW.EHRATEAM.COM  
 TBPE No. F-726  
 TBPLS No. 10092300

EHRA JOB NO. 221-022-201  
 No warranty or representation of intended use, design or proposed improvements are made herein. All Plans for land or facilities are subject to change without notice.

P:\221-022-201\Plat\PLAT\Det Res D\_Plat\_rev.dwg Dec 13, 2023-8:40am Edited by: pligetsko