

# CALDWELL LAKES COMMUNITY

## PLANT PALETTE EXHIBIT

a presentation for

## CITY OF IOWA COLONY

FEBRUARY 2024

## UNAPPROVED TREES



*WATER OAK*



*CEDAR ELM*



*VITEX AGNUS-CASTUS*



*WHITE CRAPE MYRTLE*



*SAVANNAH HOLLY*

## APPROVED TREES



*LIVE OAK*



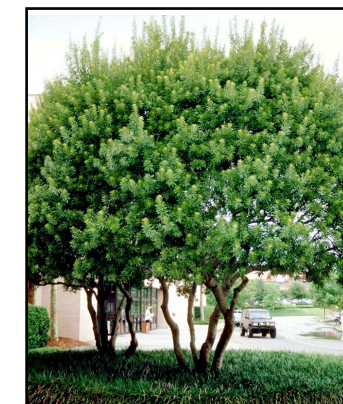
*NUTTALL OAK*



*MEXICAN SYCAMORE*

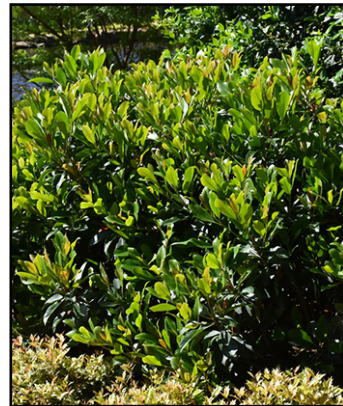


*DRUMMOND RED MAPLE*



*SOUTHERN WAX MYRTLE*

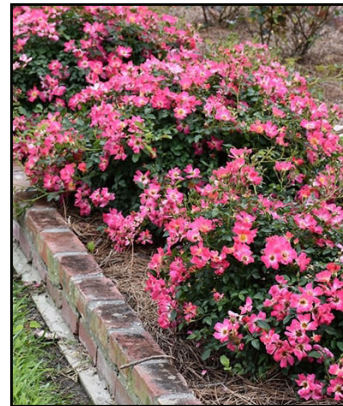
## UNAPPROVED SHRUBS & GROUNDCOVERS



**COPPERTONE LOQUAT**



**DRIFT ROSE-APRICOT**



**DRIFT ROSE-PINK**



**VAR. FLAX LILY**



**RED KNOCKOUT ROSE**



**GULF MUHLY GRASS**



**MORNING LIGHT  
MISCANTHUS**



**LILY TURF**



**GIANT LILY TURF**



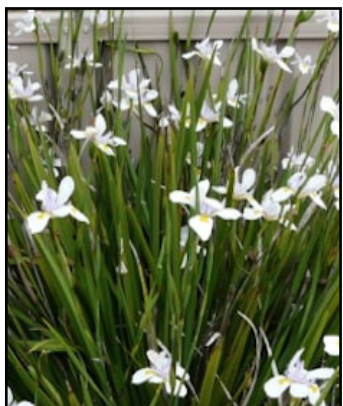
**FOXTAIL FERN**



**ASIAN JASMINE**



**FLAX LILY-TINY TIGER**



**BUTTERFLY IRIS**



**PINEAPPLE GUAVA**

## APPROVED SHRUBS & GROUNDCOVERS



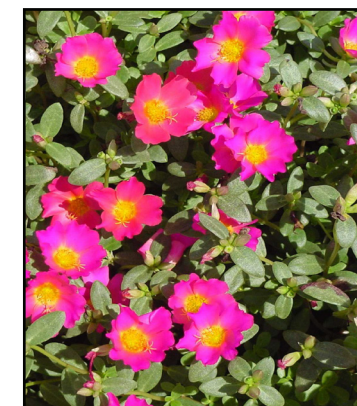
**WAXMYRTLE**



**PETITE PINK OLEANDER**

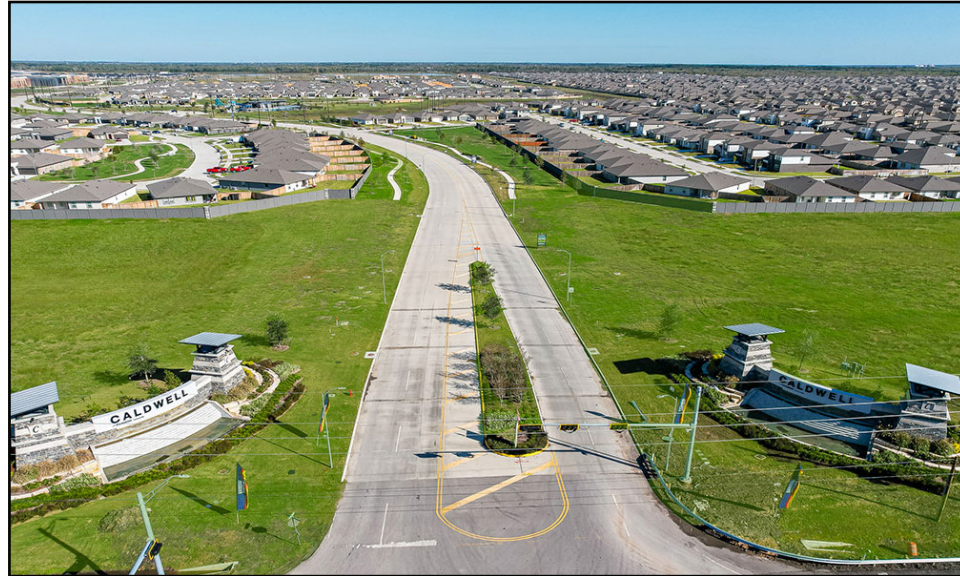


**DWARF YAUPON  
HOLLY**



**SEASONALLY  
APPROPRIATE  
COLOR**

## EXISTING CALDWELL COMMUNITY PLANTING CHARACTER



**PRIMARY MONUMENT & LANDSCAPE**



**PRIMARY MONUMENT & LANDSCAPE**



**RECREATION CENTER & LANDSCAPE**



**LANDSCAPE NEAR SIDEWALK**



**LANDSCAPE NEAR SIDEWALK**



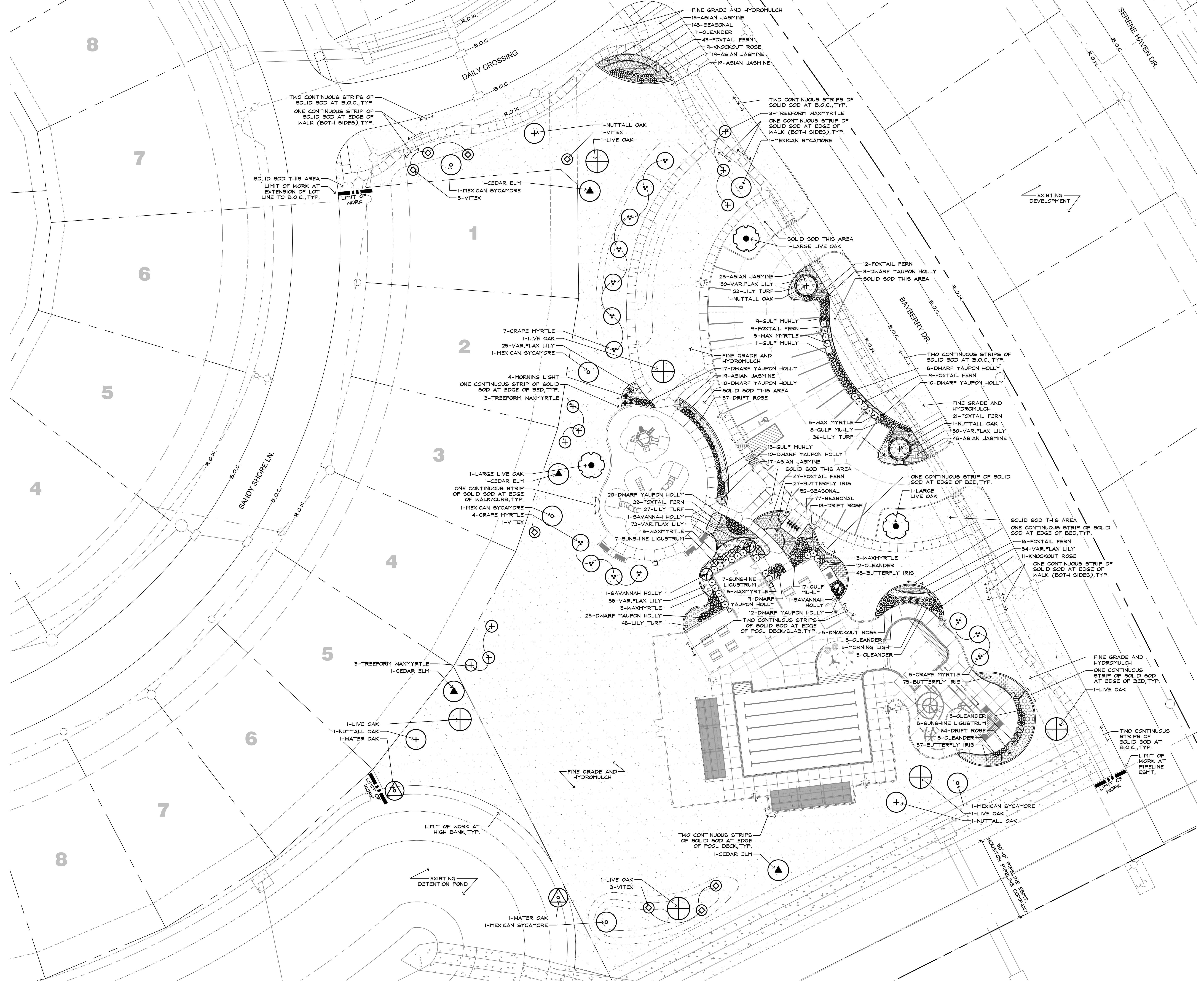
**LANDSCAPE NEAR SIDEWALK**



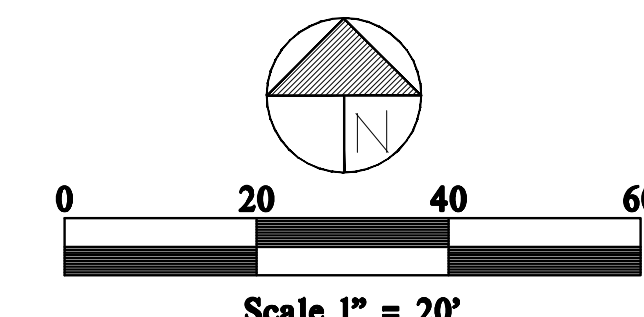
**KGA DeForest**  
Landscape Architecture  
24276 KATY FREEWAY SUITE 900  
KATY, TEXAS 77454  
281.644.1802 WWW.KGADFOREST.COM



01/28/2024  
"For regulatory approval.  
NOT for construction."



**Caldwell Crossing Sharp 1 Tract**  
**Recreation Center**  
**D.R. Horton**  
Iowa Colony, TX



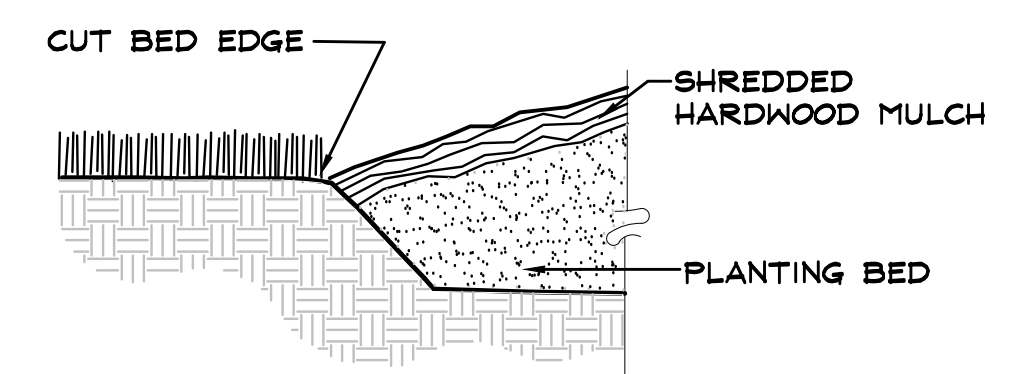
**Landscape Plan**  
Date: 01/28/2024  
Scale: 1"=20'-0"  
Job No: 233-23-248  
Revised:



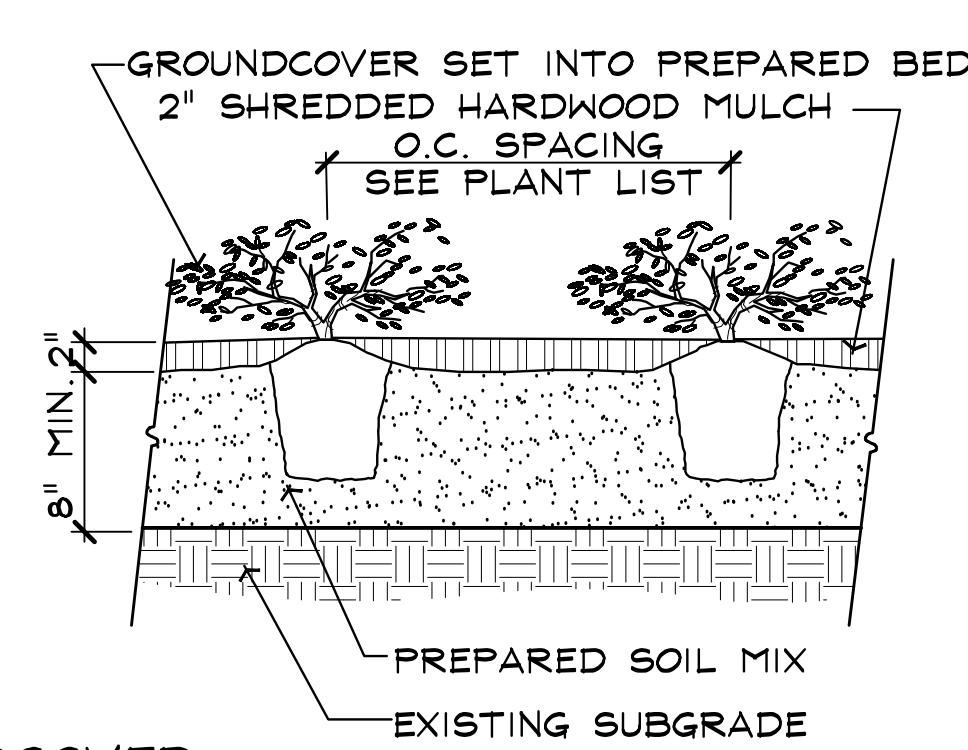
**KGADeForest**  
Landscape Architecture  
24276 KATY FREEWAY SUITE 900  
KATY, TEXAS 77454  
281-644-1802 WWW.KGADFOREST.COM



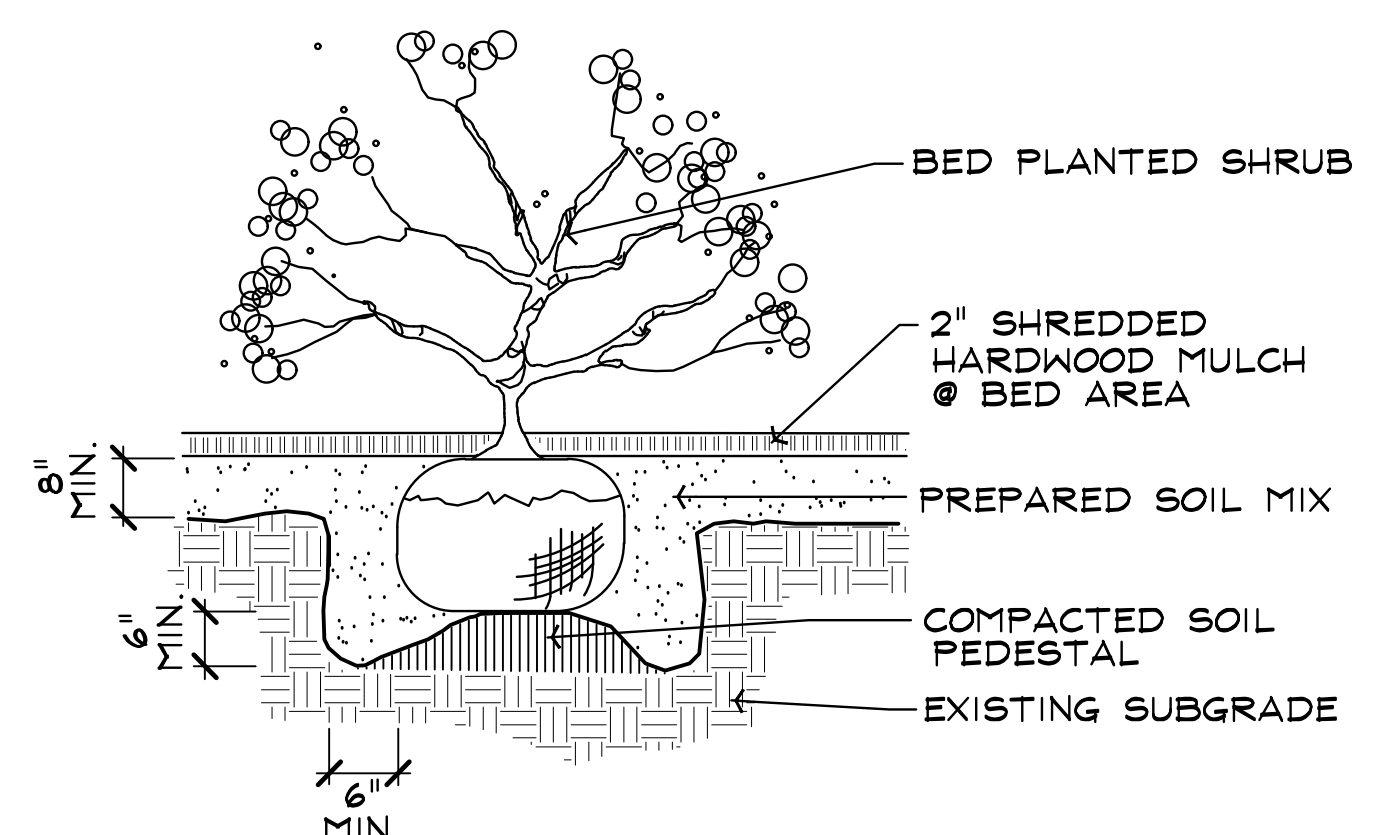
01/28/2024  
"For regulatory approval.  
NOT for construction."



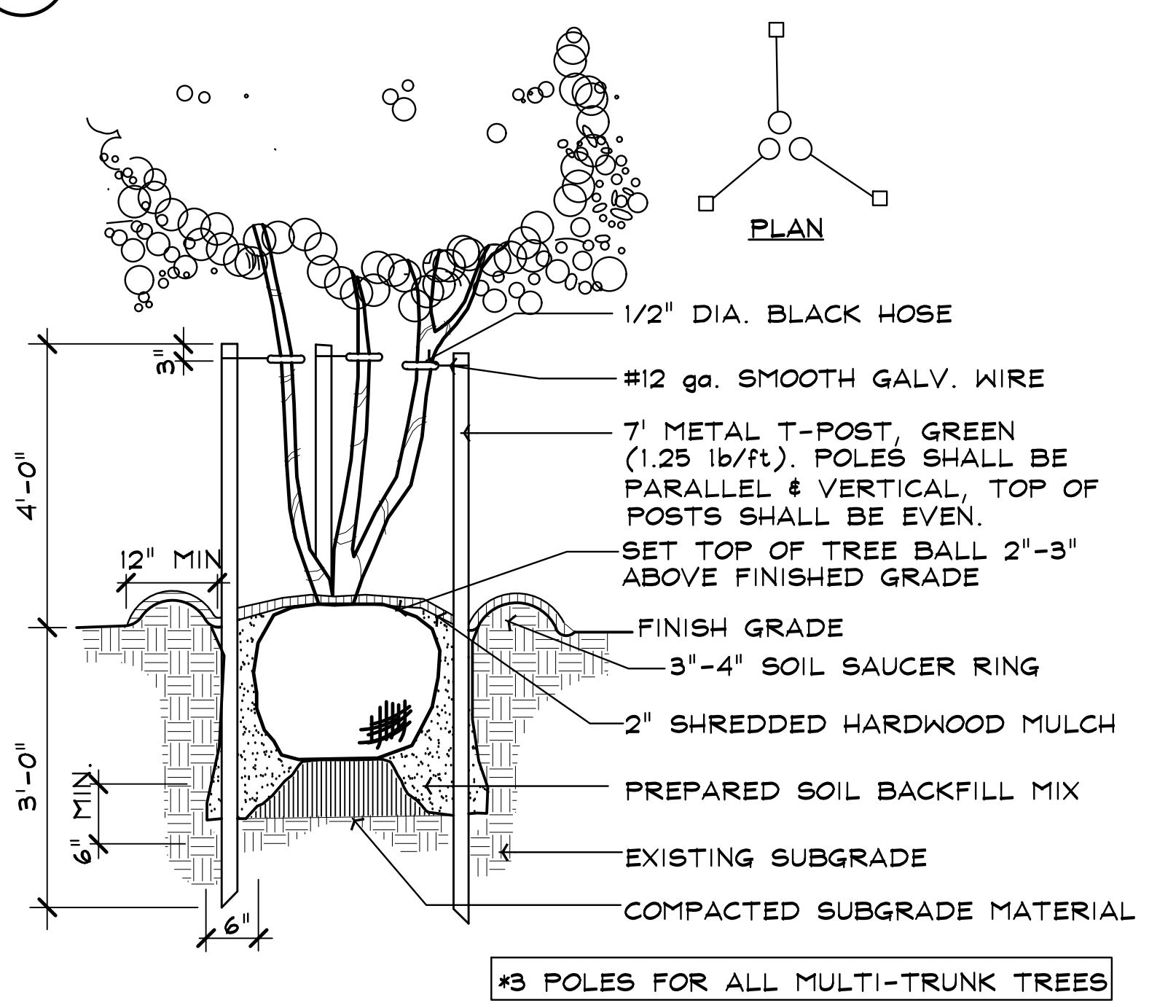
**E SHOVEL CUT EDGE** SCALE: NTS



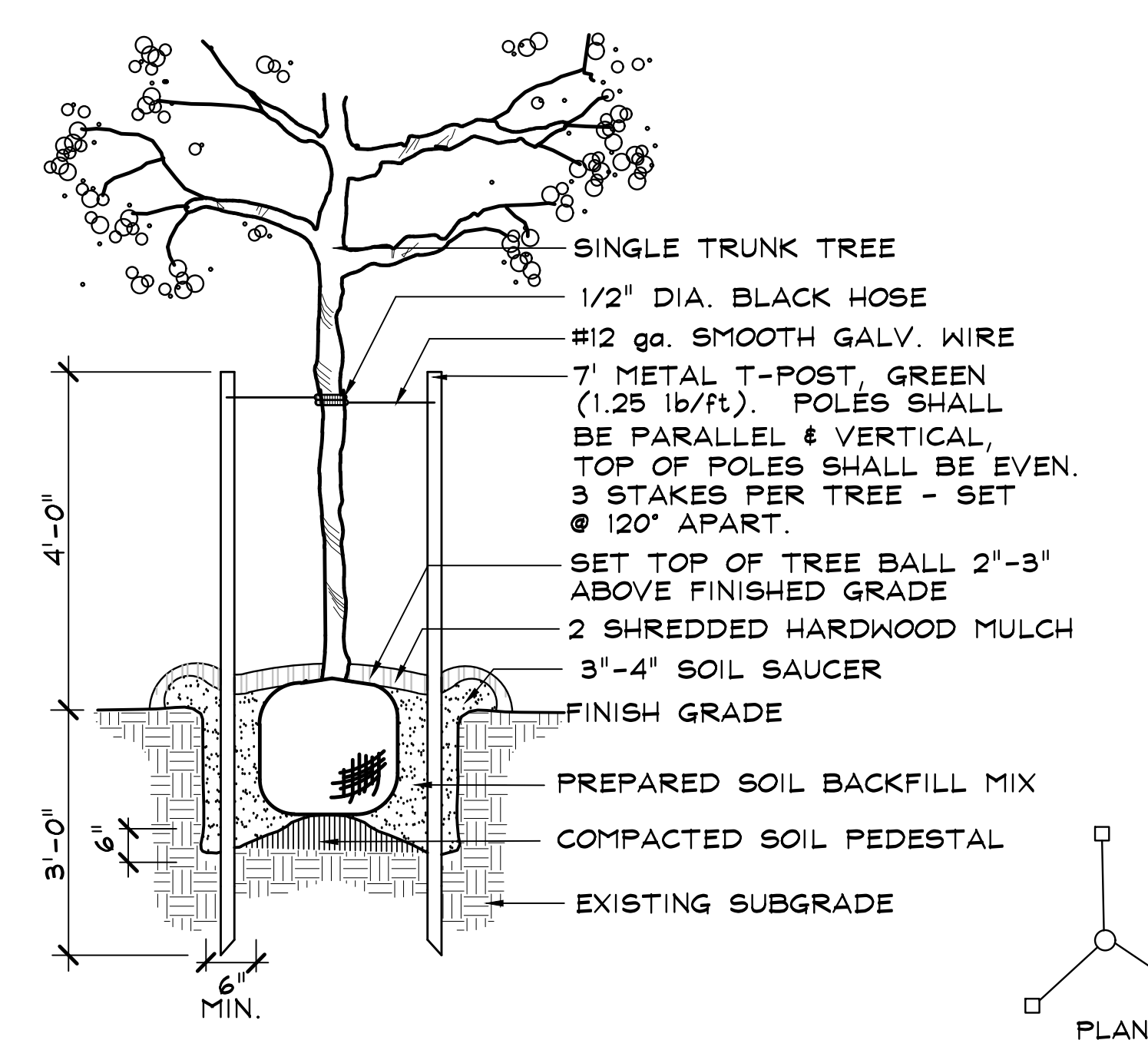
**D GROUNDCOVER** SCALE: NTS



**C SHRUB BED** SCALE: NTS



**B MULTI-TRUNK STAKING** SCALE: NTS



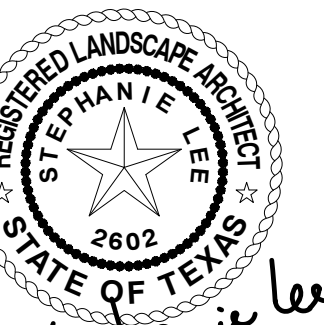
**A SINGLE TRUNK STAKING** SCALE: NTS

BOTANICAL NAME	COMMON NAME	SIZE	CONDITION	REMARKS
<b>TREES</b>				
<i>Quercus Virginiana</i>	Large Live Oak	200 GAL.	Container	16'-18' HT., 9'-10' SPRD., 5"-6" CAL., Full, Straight Trunk
<i>Quercus Virginiana</i>	Live Oak	65 GAL.	Container	12'-13' HT., 5'-6' SPRD., 2 1/2"-3" CAL., Full, Straight Trunk
<i>Quercus texana</i>	Nuttall Oak	65 GAL.	Container	12'-13' HT., 5'-6' SPRD., 2 1/2"-3" CAL., Full, Straight Trunk
<i>Quercus nigra</i>	Water Oak	65 GAL.	Container	12'-13' HT., 5'-6' SPRD., 2 1/2"-3" CAL., Full, Straight Trunk
<i>Ulmus crassifolia</i>	Cedar Elm	65 GAL.	Container	12'-13' HT., 5'-6' SPRD., 2 1/2"-3" CAL., Full, Straight Trunk
<i>Platanus Mexicana</i>	Mexican Sycamore	65 GAL.	Container	12'-13' HT., 5'-6' SPRD., 2 1/2"-3" CAL., Full, Straight Trunk
<i>Lagerstroemia indica 'Bashams Pink'</i>	Crape Myrtle	30 GAL.	Container	Single-Trunk, 8'-10' HT., 1 1/4"-1 1/2" CAL., 5'-6' SPRD., Matching
<i>Vitex agnus-castus</i>	Vitex	30 GAL.	Container	Multi-Trunk, 5'-6' HT., 4'-5' SPRD., 3-5 Canes, Full
<i>Ilex x attenuata 'Savannah'</i>	Savannah Holly	30 GAL.	Container	8'-10' HT., 4'-5' SPRD., 48" Clear Trunk, Straight Trunk
<i>Myrica cerifera</i>	Tree Form Waxmyrtle	30 GAL.	Container	Multi-Trunk, 5'-6' HT., 4'-5' SPRD., 3-5 Canes, Full
<b>SHRUBS</b>				
<i>Ligustrum sinense 'Sunshine'</i>	Sunshine Ligustrum	7 GAL.	Container	24"-30" HT., 20"-24" SPRD., Full Pot, 48" O.C.
<i>Myrica cerifera</i>	Waxmyrtle	7 GAL.	Container	42" HT., 36" SPRD., Full Pot, 5" O.C.
<i>Rosa x 'Radrazz'</i>	Red Knockout Rose	3 GAL.	Container	24"-30" HT., 20"-24" SPRD., Full Pot, 30" O.C., Red
<i>Muhlenbergia capillaris</i>	Gulf Muhly Grass	3 GAL.	Container	24" HT., 18"-24" SPRD., Full pot, Well-Rooted, 30" O.C.
<i>Nerium oleander 'Petite Pink'</i>	Petite Pink Oleander	3 GAL.	Container	18"-24" HT., 18"-24" SPRD., Full Pot, 30" O.C.
<i>Miscanthus sinensis 'Morning Light'</i>	Morning Light Miscanthus	3 GAL.	Container	30" HT., 12"-15" SPRD., Full Pot, Well-Rooted, 48" O.C.
<i>Rosa 'Meijocas' Pink Drift Rose</i>	Pink Drift Rose	3 GAL.	Container	15" HT., 12" SPRD., Full Pot, 24" O.C.
<i>Ilex vomitoria 'Nana'</i>	Duf. Yaupon Holly	3 GAL.	Container	12"-15" HT., 12"-15" SPRD., Full Pot, Well-Rooted, 24" O.C.
<i>Asparagus meyeri</i>	Foxtail Fern	3 GAL.	Container	Full, 15"-18" Ht & sprd., 24" o.c.
<b>GROUNDCOVER</b>				
<i>Trachelospermum asiaticum</i>	Asian Jasmine	1 GAL.	Container	Full Pot, Well-Rooted, 5-7 Runners, 15"-18" SPRD., 18" O.C.
<i>Phormium tenax 'Tiny Tiger'</i>	Flax Lily	1 GAL.	Container	10"-12" HT., 10"-12" SPRD., Full Pot, 18" O.C.
<i>Liriope muscari 'Evergreen Giant'</i>	Giant Lilyturf	1 GAL.	Container	Full Pot, Well-Rooted, 15"-18" HT., 12"-15" SPRD., 18" O.C.
Seasonally Appropriate	Seasonal Color	4" Pot	Container	Full, well rooted, 9" o.c. (species as dictated by season)
<b>SOD/SEED</b>				
<i>Cynodon dactylon 'Celebration Bermuda'</i>	Solid Sod Bermuda			See plans for location of proposed sod strips, sod infill. To be used in patch & repair as needed for disturbed areas of existing turf.
<i>Cynodon dactylon 'Common Bermuda'</i>	Hydranulch Bermuda			See plans for location of proposed hydranulch areas

**Caldwell Crossing Sharp 1 Tract  
Recreation Center**  
**D.R. Horton**  
Iowa Colony, TX

**Landscape  
Details**

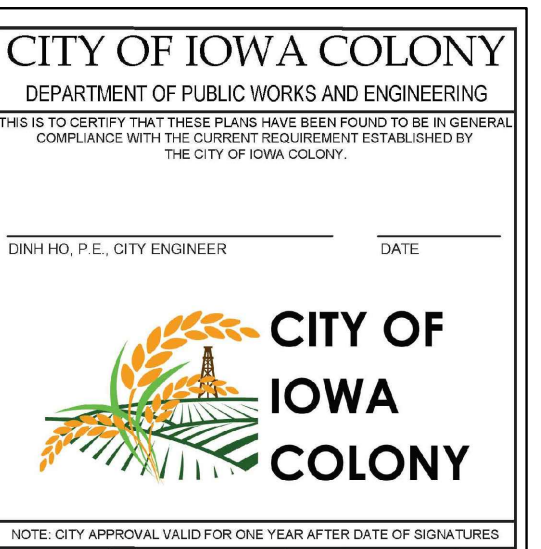
Date: 01/28/2024  
Scale: AS NOTED  
Job No: 233-23-248  
Revised:



02/28/2024  
"For regulatory approval.  
NOT for construction."

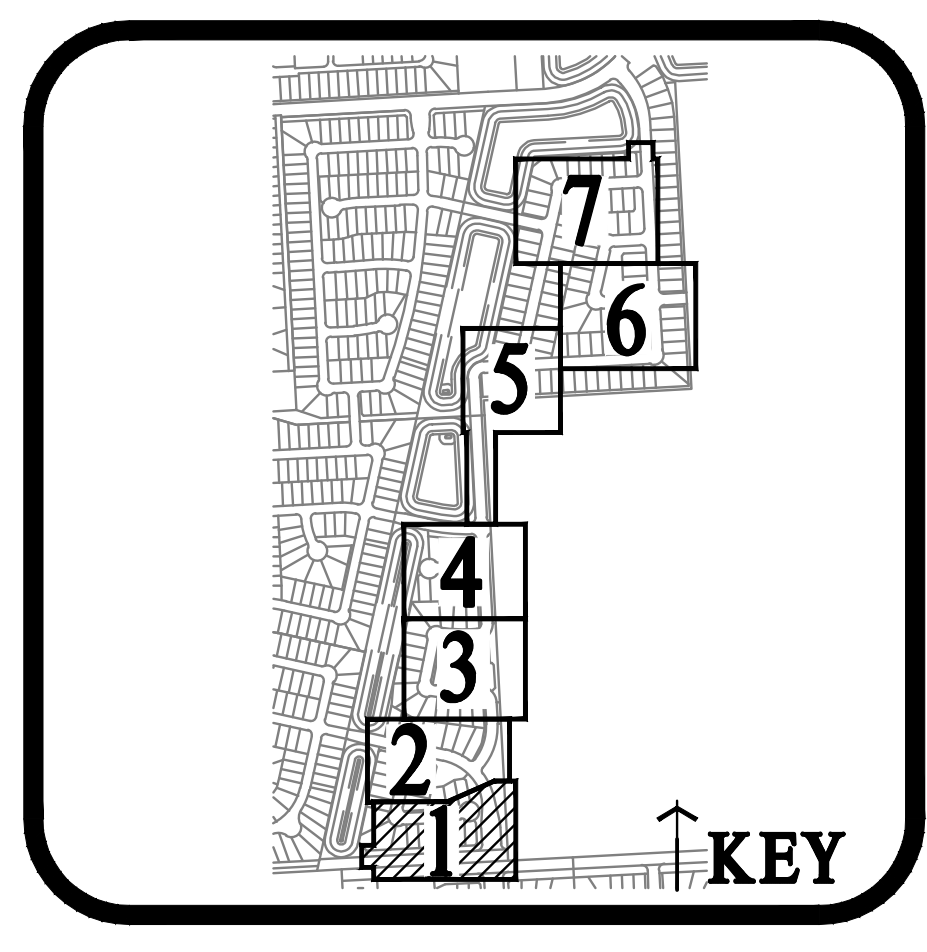
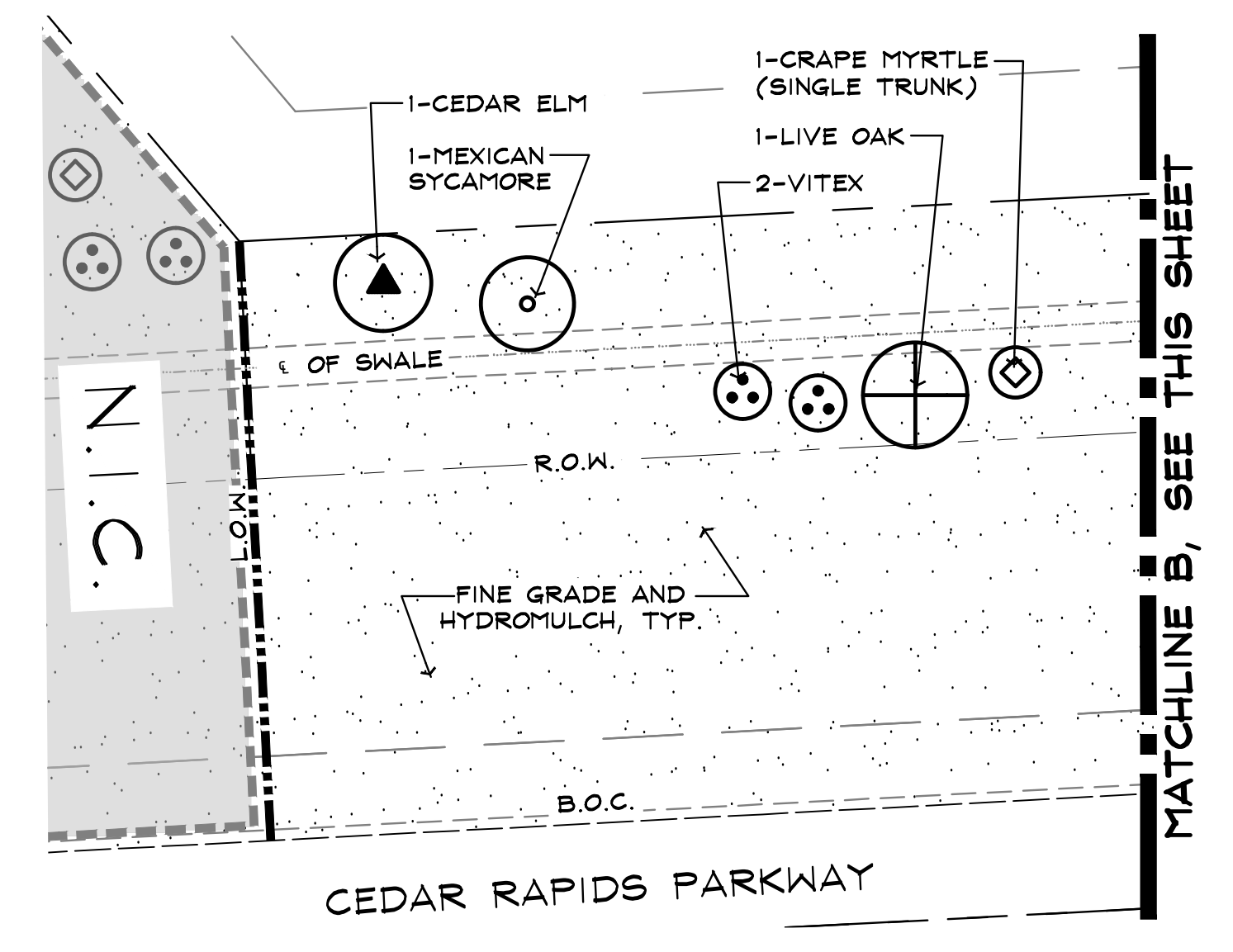
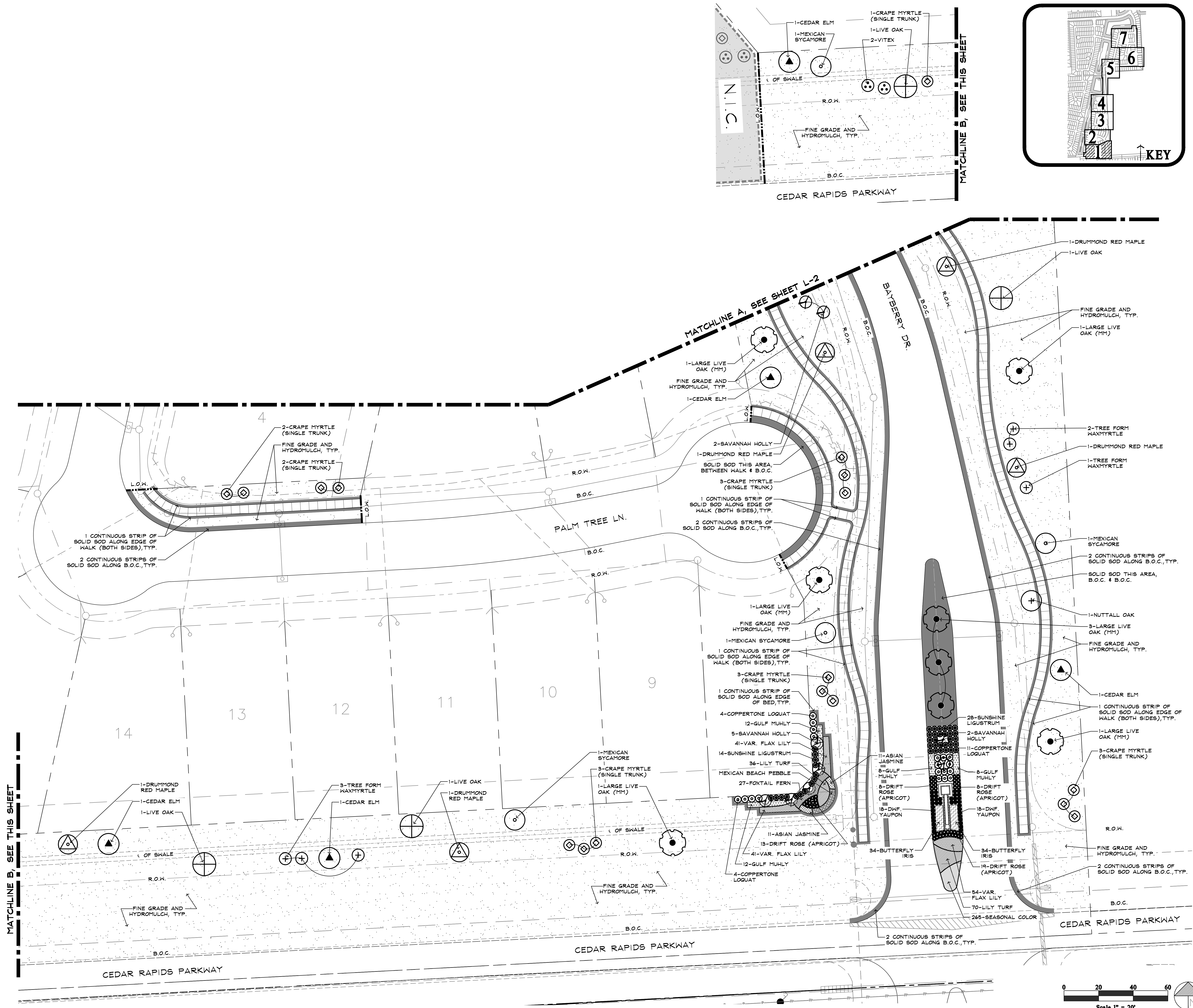
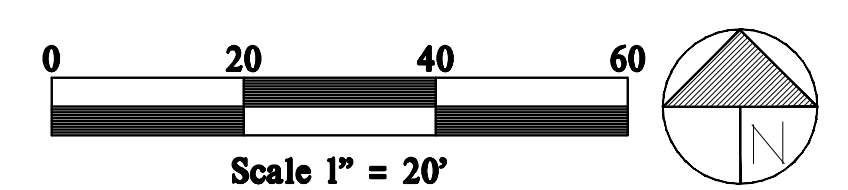
**CALDWELL CROSSING  
SECTION 1 & 2 LANDSCAPE IMPROVEMENTS**

**D.R. Horton of Texas**  
Fort Bend County, TX



**Landscape Plan**

Date: 02/28/2024  
Scale: 1"=20'-0"  
Job No: 233-23-258  
Revised:



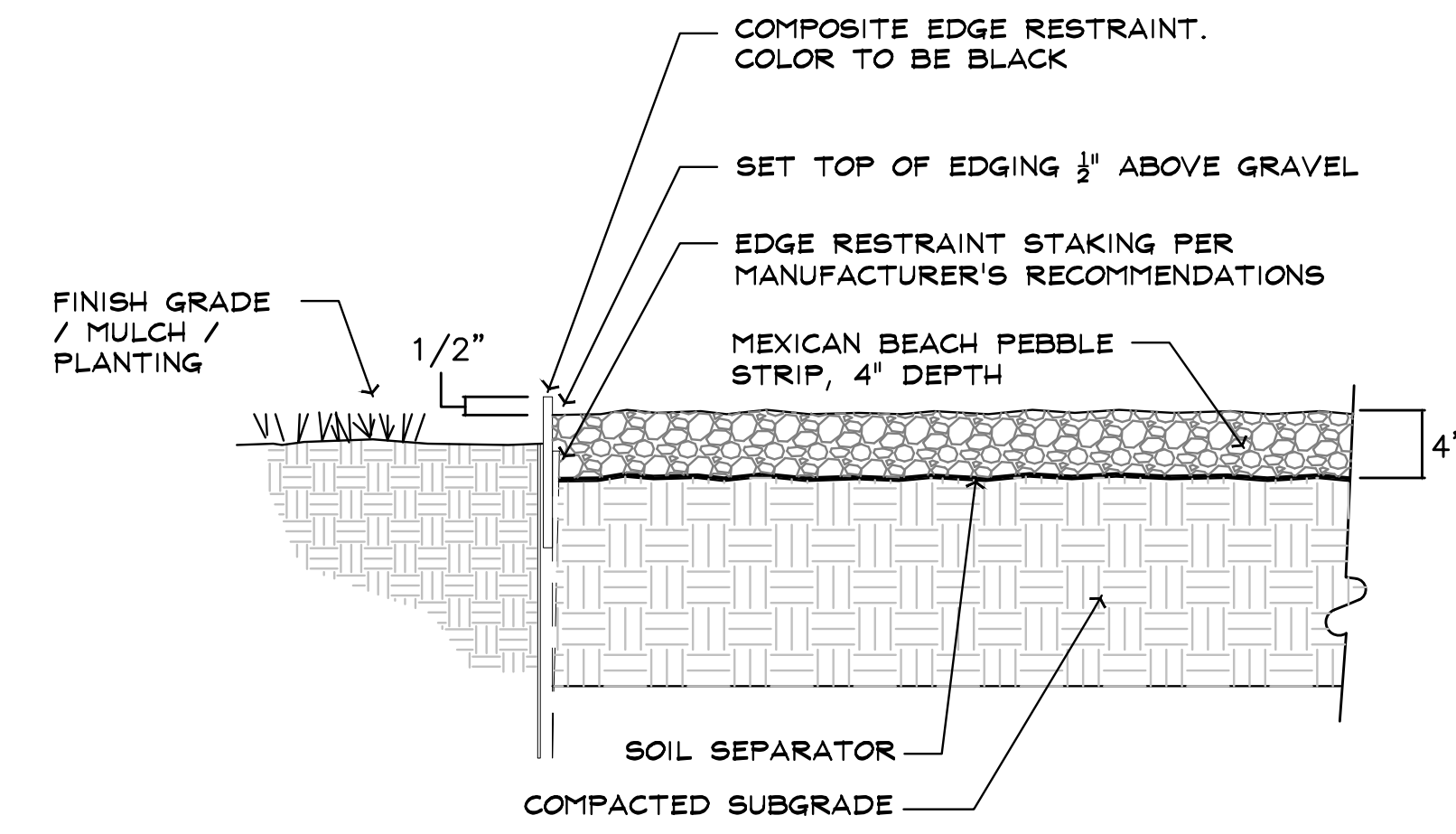
**CALDWELL CROSSING**  
**SECTION 1 & 2 LANDSCAPE IMPROVEMENTS**  
**D.R. Horton of Texas**  
**Fort Bend County, TX**

BOTANICAL NAME	COMMON NAME	SIZE	CONDITION	REMARKS
<b>TREES</b>				
Quercus virginiana	Large Live Oak	200 GAL.	Machine Moved	Min. 6" Cal., 16'-18' HT., Min. 9' Sprd., Full, Straight Trunk, Matching
Quercus virginiana	Live Oak	65 GAL.	Container	3"-3 1/2" Caliper, 12'-14' Ht., 6'-7' sprd., full, straight trunk, matching
Ulmus crassifolia	Cedar Elm	65 GAL.	Container	3"-3 1/2" Caliper, 12'-14' Ht., 6'-7' sprd., full, straight trunk, matching
Platanus mexicana	Mexican Sycamore	65 GAL.	Container	3"-3 1/2" Caliper, 12'-14' Ht., 6'-7' sprd., full, straight trunk, matching
Quercus texana	Nuttall Oak	65 GAL.	Container	3"-3 1/2" Caliper, 12'-14' Ht., 6'-7' sprd., full, straight trunk, matching
Acer rubrum drummondii	Drummond Red Maple	65 GAL.	Container	3"-3 1/2" Caliper, 12'-14' Ht., 6'-7' sprd., full, straight trunk, matching
Myrica cerifer	Tree Form Waxmyrtle	30 GAL.	Container	Multi-trunk, 3-5 canes, 6' min. ht, 4' min. spread, full to ground
Lagerstroemia indica 'Muskogee'	Crape Myrtle (Single Trunk)	30 GAL.	Container	Single Trunk, 2" cal., 8'-10' ht., 4'-5' sprd., full
Vitex agnus-castus	Vitex	30 GAL.	Container	Multi-trunk, 6' Min Ht., 48" Min sprd.
Ilex x attenuata 'Savannah'	Savannah Holly (Tree Form)	30 GAL.	Container	8'-10' HT., 4'-5' SPRD., 48" Clear Trunk, straight Single-Trunk
<b>SHRUBS/GROUNDCOVERS</b>				
Eriobotrya Japonica 'Coppertone'	Coppertone Loquat	7 GAL.	Container	36" min. ht. 30" sprd. full pot, well rooted, 48" o.c.
Myrica cerifera	Waxmyrtle	7 GAL.	Container	30"-36" Ht. 30" sprd., full to ground, well rooted, 48" o.c.
Ligustrum Sinense 'Sunshine'	Sunshine Ligustrum	7 GAL.	Container	24"-30" Ht., 18"-24" Sprd., Full Pot, 36" O.C.
Miscanthus sinensis 'Morning Light'	Miscanthus 'Morning Light'	3 GAL.	Container	24"-30" HT., 20"-24" Sprd., Full Pot, Well-Rooted, 48" O.C.
Nerium oleander 'petite pink'	Pink Dwarf Oleander	3 GAL.	Container	18"-24" Ht., 18" min sprd., full pot, 30" o.c.
Rosa x 'Radrazz'	Knockout Rose	3 GAL.	Container	18"-24" Ht., 18"-24" Sprd., Full Pot, 30" O.C., Pink
Rosa 'Meiminrate'	Drift Rose (Apricot Drift)	3 GAL.	Container	15" min. HT., 15" min. Sprd., Full Pot, Well-Rooted, 24" O.C.
Ilex vomitoria 'nana'	Dwarf Yaupon	3 GAL.	Container	15" min. HT., 15" min. Sprd., Full Pot, Well-Rooted, 24" O.C.
Muhlenbergia capillaris	Gulf Muhly	3 GAL.	Container	24"-30" HT., 20"-24" Sprd., Full Pot, Well-Rooted, 30" O.C.
Asparagus 'Meyeri'	Festall Fern	3 GAL.	Container	15" Ht. and Sprd., Full Pot, Well Rooted, 24" O.C.
Dietes grandiflora	Butterfly Iris	3 GAL.	Container	15"-18" Ht. 12" sprd., full pot, well rooted, 18" o.c.
Dianella Tasmanica 'Variegata'	Variegated Flax Lily	1 GAL.	Container	12"-15" Ht. and Sprd., Full Pot, Well Rooted, 18" O.C.
Trachelospermum asiaticum	Asian Jasmine	1 GAL.	Container	5-7 runners, 15"-18" spread, Full pot, well rooted, 18" o.c.
Liriope muscari	Lily Turf	1 GAL.	Container	6"-10" ht., 12" sprd., full pot, well rooted, 18" O.C.
Seasonally Appropriate	Seasonal Color	4"	Container	Full, well rooted, 9" o.c.
<b>SOD/SEED</b>				
Cynodon dactylon 'Celebration Bermuda'	Solid Sod			See plans for location of proposed sod strips, sod infill. To be used in patch & repair as needed for disturbed areas of existing turf.
Cynodon dactylon 'Common Bermuda'	Hydromulch			See plans for location of proposed hydromulch areas

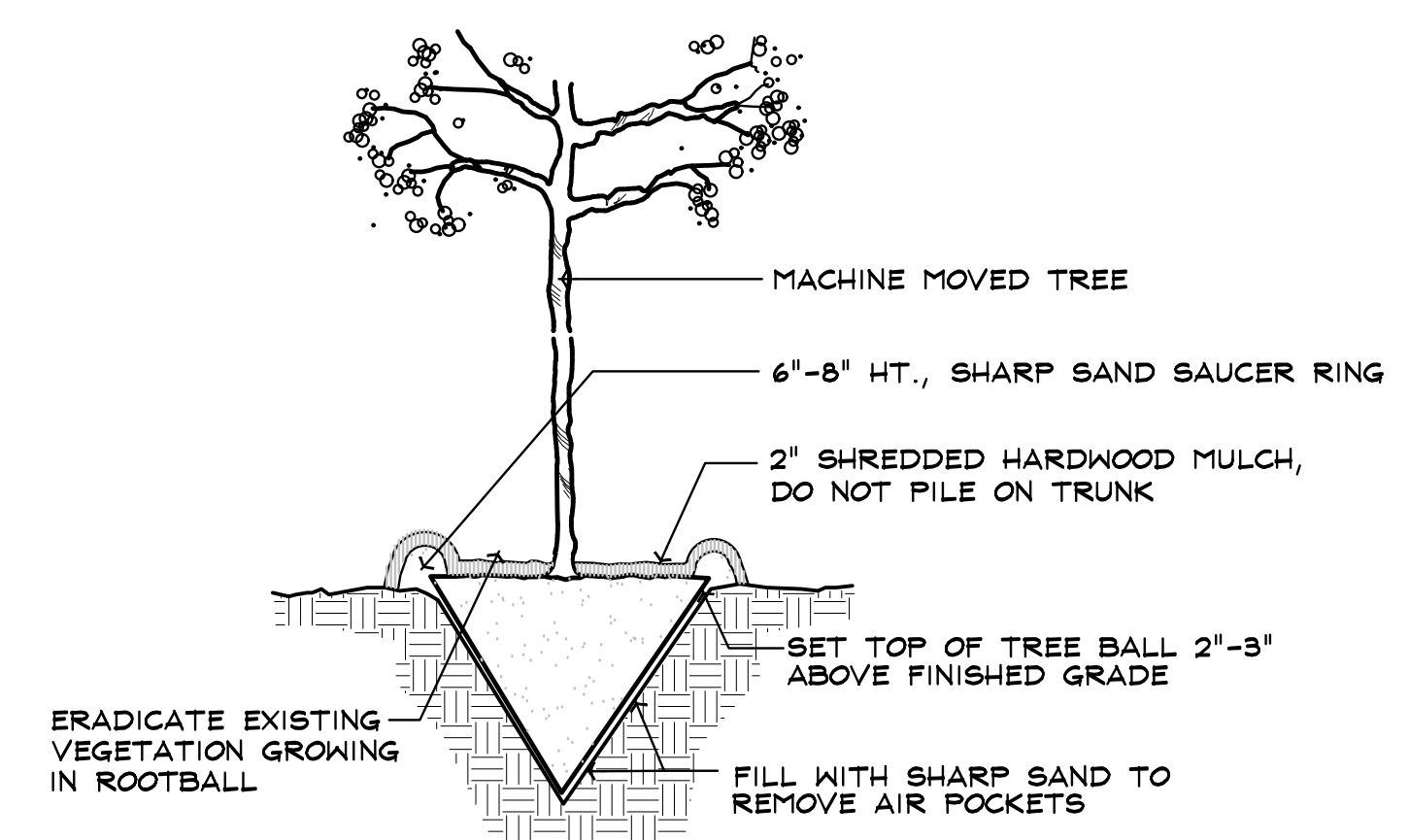
ALL DISTURBED AREAS NOT DESIGNATED FOR PLANTING AND WITHIN LIMITS SHOWN ON PLANS TO BE HYDROMULCHED WITH BERMUDA GRASS SEED  
 \*\*\*\* NOTE: ALL SOD TO BE BERMUDA GRASS.

**MATERIAL SCHEDULE**

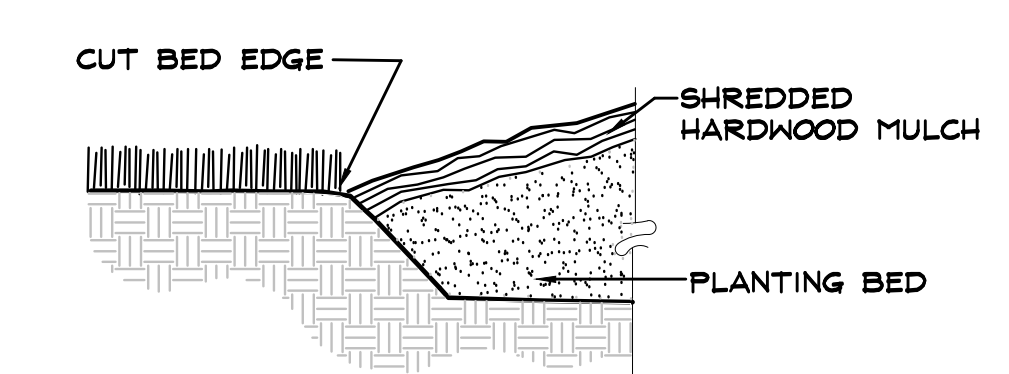
Item	Color	Finish / Pattern	Manufacturer / Local Representative	General Notes
GRAVEL	BLACK	MEXICAN BEACH PEBBLES SIZE: 2"-3"	SUPPLIER: ALAMO STONE CONTACT: HUGH ACHÉ PH: 281-240-4600	INSTALL PER MANUFACTURER'S RECOMMENDATIONS. PROVIDE COLOR SAMPLES TO LANDSCAPE ARCHITECT PRIOR TO PURCHASE/FABRICATION. NOTIFY LANDSCAPE ARCHITECT IMMEDIATELY OF ANY VARIATION BETWEEN PLANS AND SITE CONDITIONS.
COMPOSITE EDGING	BLACK	-	-	REQUIRED AT ALL PERIMETER OF PEBBLE BEDS & WHEN SEPARATING 2 TYPES OF PEBBLE IN SAME BED. INSTALL PER MANUFACTURER'S SPECIFICATIONS. NOTIFY KGA DEFORREST IMMEDIATELY OF ANY VARIATION BETWEEN PLANS & SITE CONDITIONS.



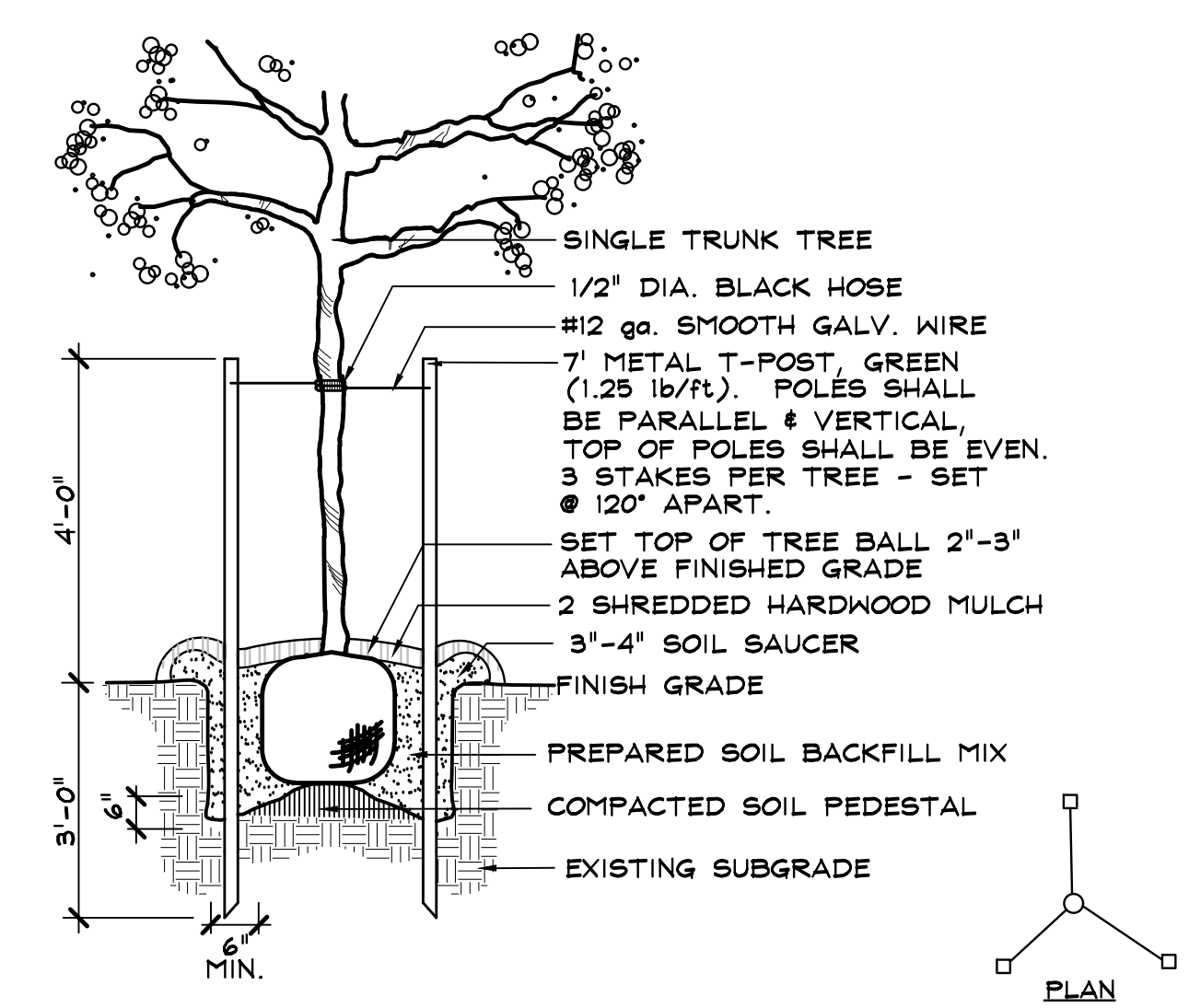
**G** COMPOSITE EDGING AT MEXICAN BEACH PEBBLE STRIP NTS



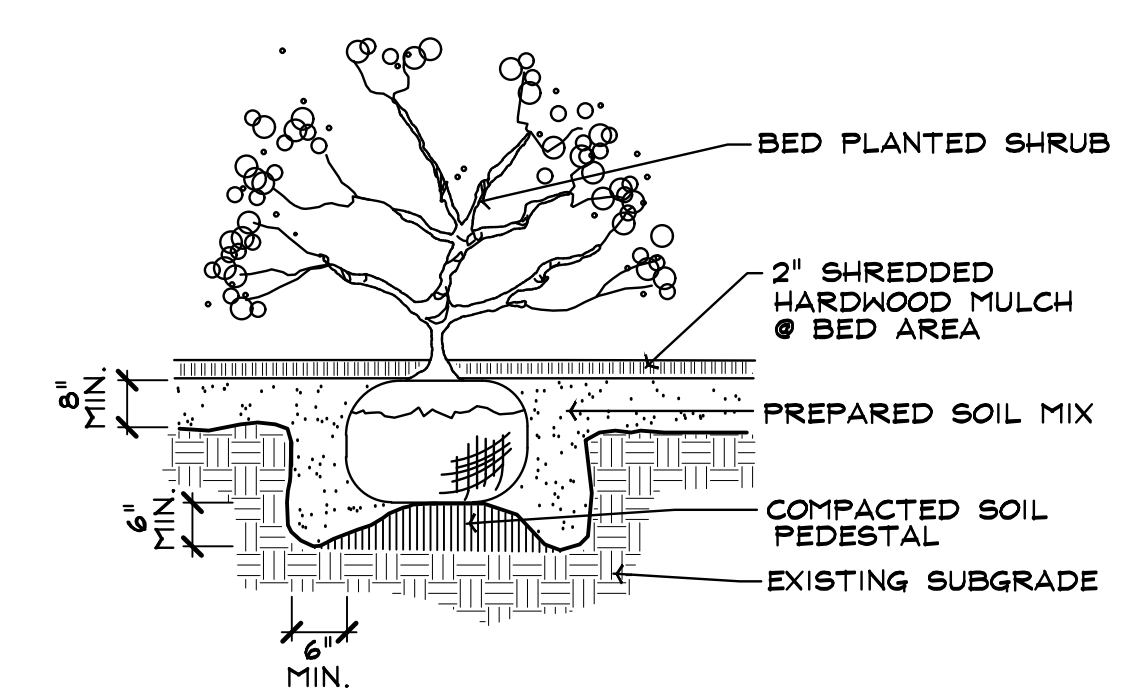
**F** MACHINE MOVED TREE NTS



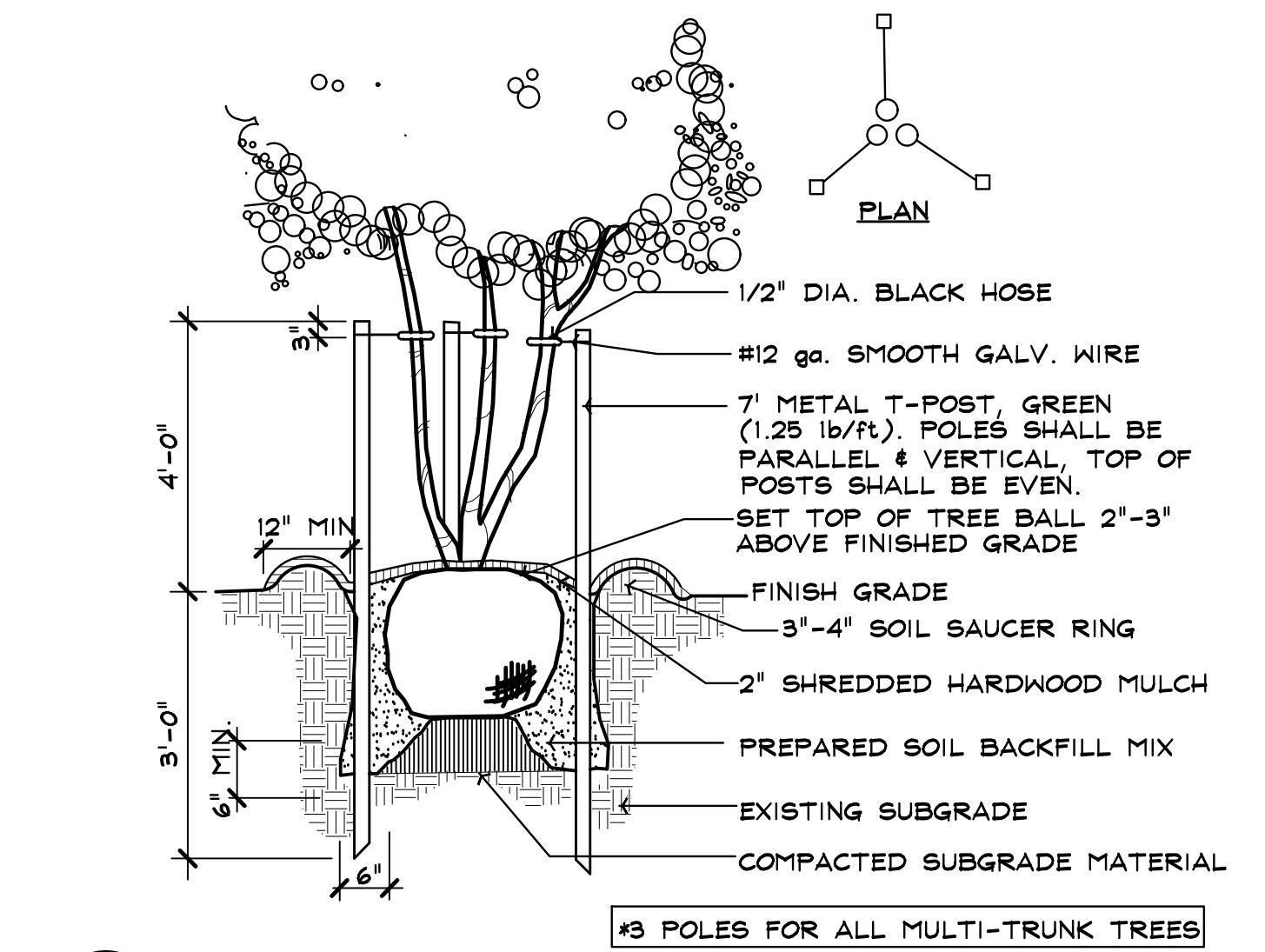
**C** SHOVEL CUT BED EDGE NTS



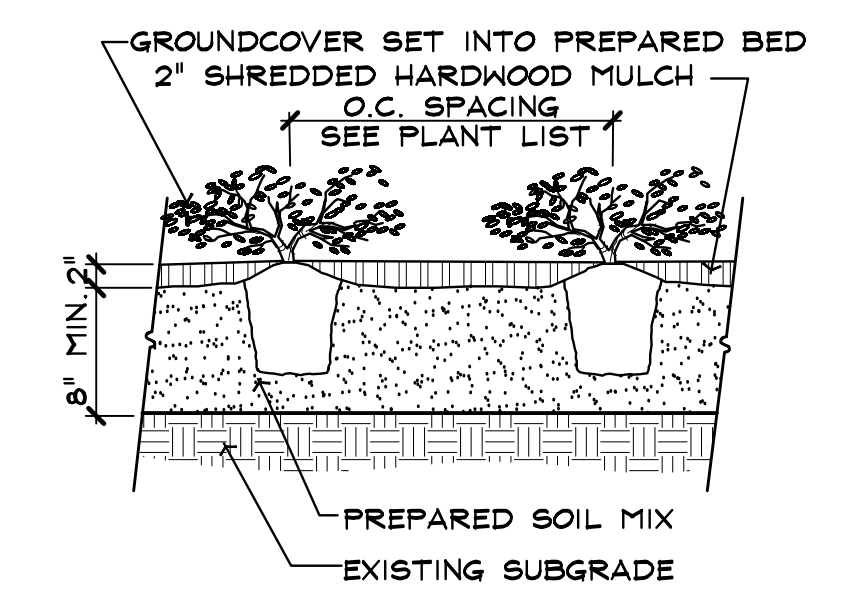
**E** STAKING DETAIL NTS



**B** BED PLANTED SHRUB NTS



**D** MULTI TRUNK TREE STAKING NTS



**A** GROUNDCOVER PLANTING NTS