

CALDWELL CROSSING COMMUNITY

PLANT PALETTE EXHIBIT

a presentation for

CITY OF IOWA COLONY

FEBRUARY 2024

UNAPPROVED TREES



WATER OAK



CEDAR ELM



VITEX AGNUS-CASTUS



WHITE CRAPE MYRTLE



SAVANNAH HOLLY

APPROVED TREES



LIVE OAK



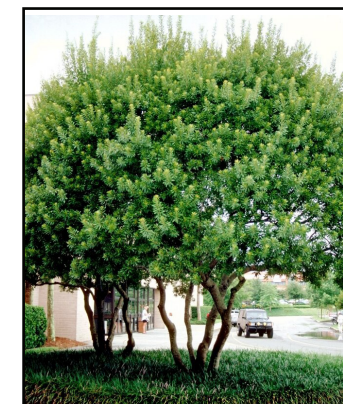
NUTTALL OAK



MEXICAN SYCAMORE

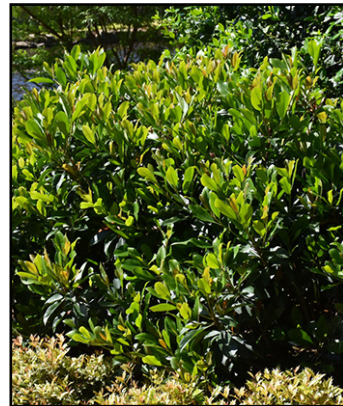


DRUMMOND RED MAPLE



SOUTHERN WAX MYRTLE

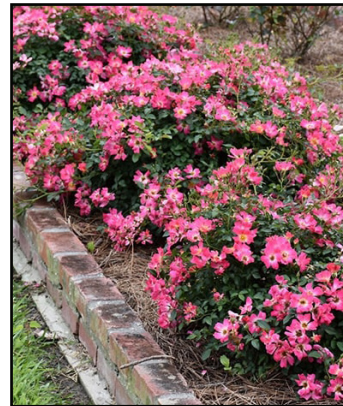
UNAPPROVED SHRUBS & GROUNDCOVERS



COPPERTONE LOQUAT



DRIFT ROSE-APRICOT



DRIFT ROSE-PINK



VAR. FLAX LILY



RED KNOCKOUT ROSE



GULF MUHLY GRASS



**MORNING LIGHT
MISCANTHUS**



LILY TURF



GIANT LILY TURF



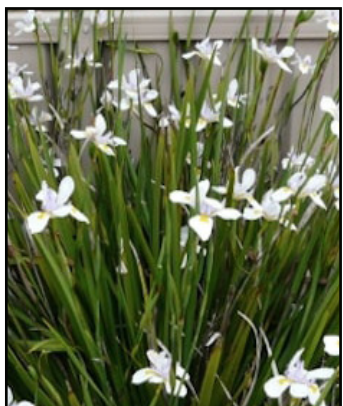
FOXTAIL FERN



ASIAN JASMINE



FLAX LILY-TINY TIGER



BUTTERFLY IRIS



PINEAPPLE GUAVA

APPROVED SHRUBS & GROUNDCOVERS



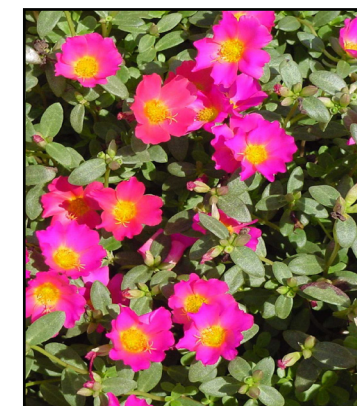
WAXMYRTLE



PETITE PINK OLEANDER



**DWARF YAUPON
HOLLY**



**SEASONALLY
APPROPRIATE
COLOR**

EXISTING CALDWELL COMMUNITY PLANTING CHARACTER



PRIMARY MONUMENTS & LANDSCAPE



PRIMARY MONUMENTS & LANDSCAPE



RECREATION CENTER & LANDSCAPE



LANDSCAPE NEAR SIDEWALK



LANDSCAPE NEAR SIDEWALK



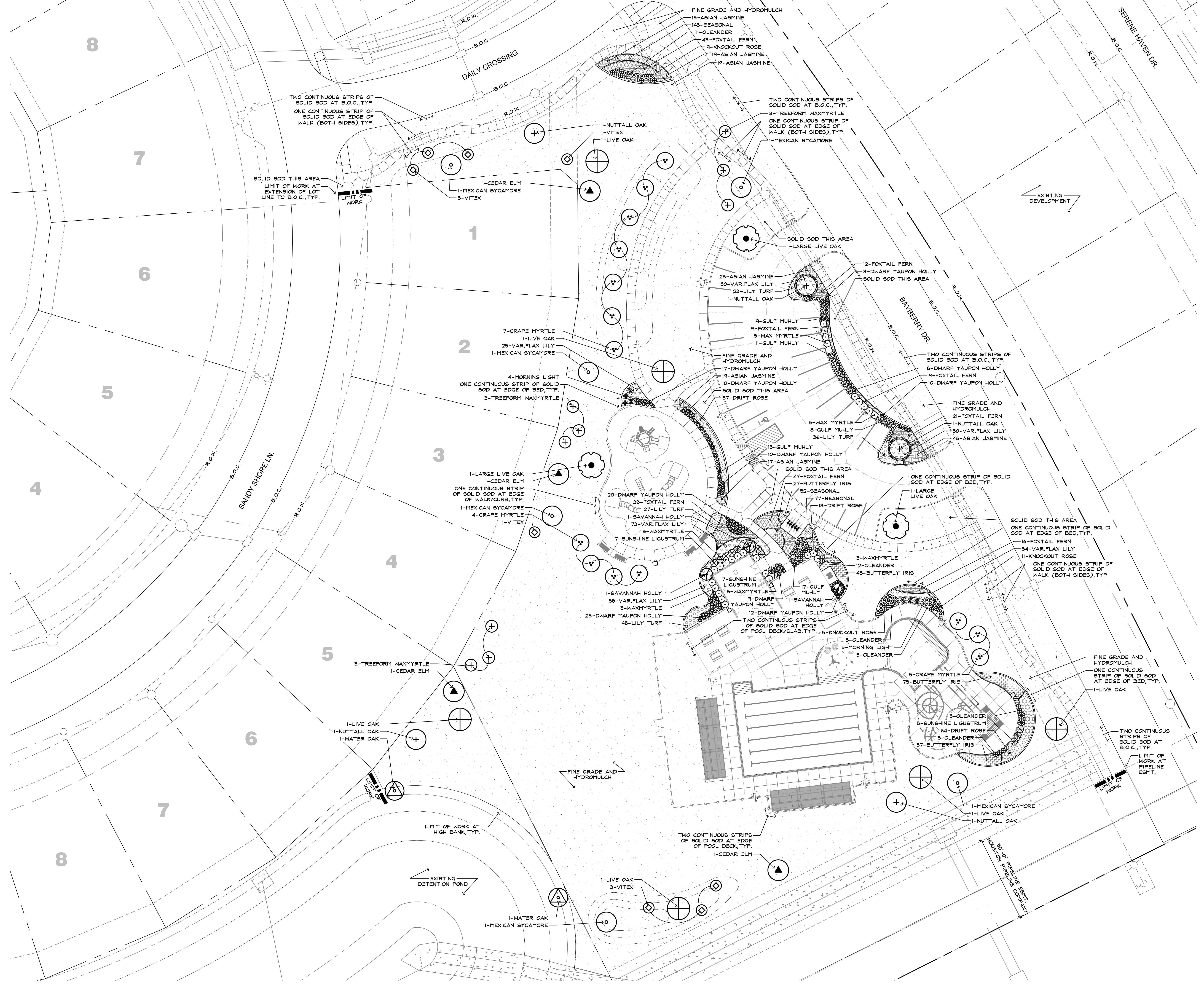
LANDSCAPE NEAR SIDEWALK



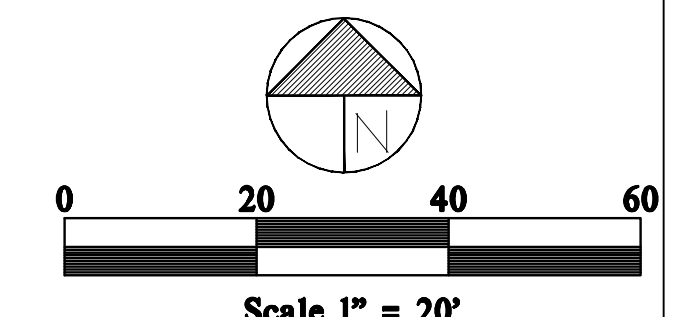
KGA DeForest
Landscape Architecture
24276 KATY FREEWAY SUITE 900
KATY, TEXAS 77454
281.644.1802 WWW.KGADFOREST.COM



01/28/2024
"For regulatory approval. NOT for construction."



Caldwell Crossing Sharp 1 Tract
Recreation Center
D.R. Horton
Iowa Colony, TX



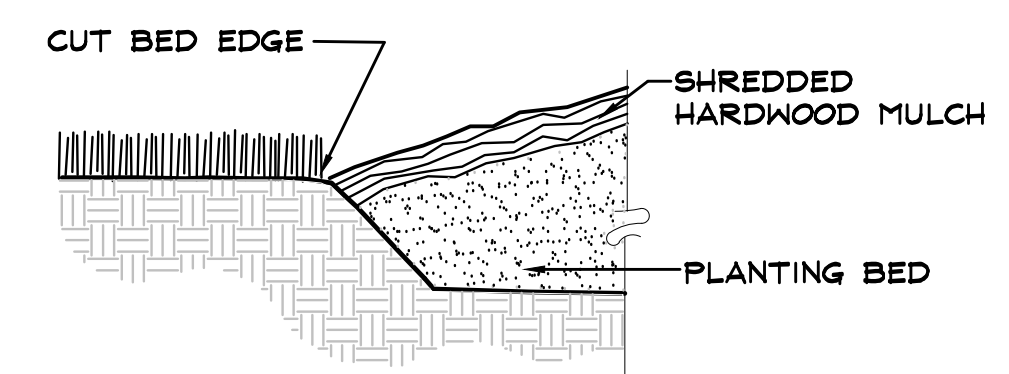
Landscape Plan
Date: 01/28/2024
Scale: 1"=20'-0"
Job No: 233-23-248
Revised:



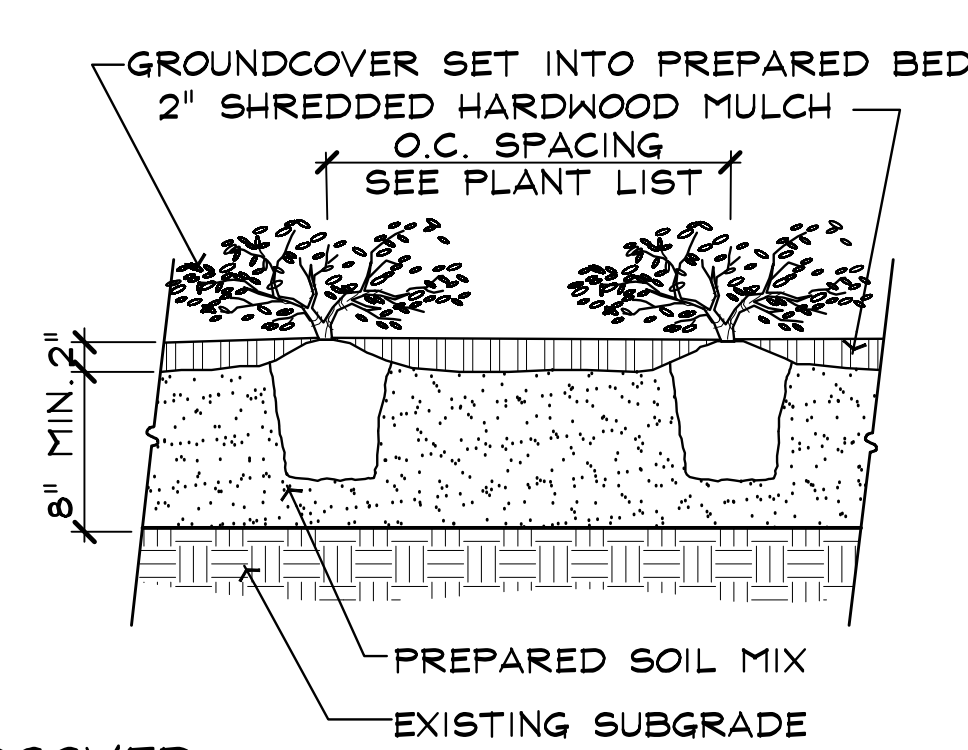
KGADeForest
Landscape Architecture
24276 KATY FREEWAY SUITE 900
KATY, TEXAS 77454
281-644-1802 WWW.KGADFOREST.COM



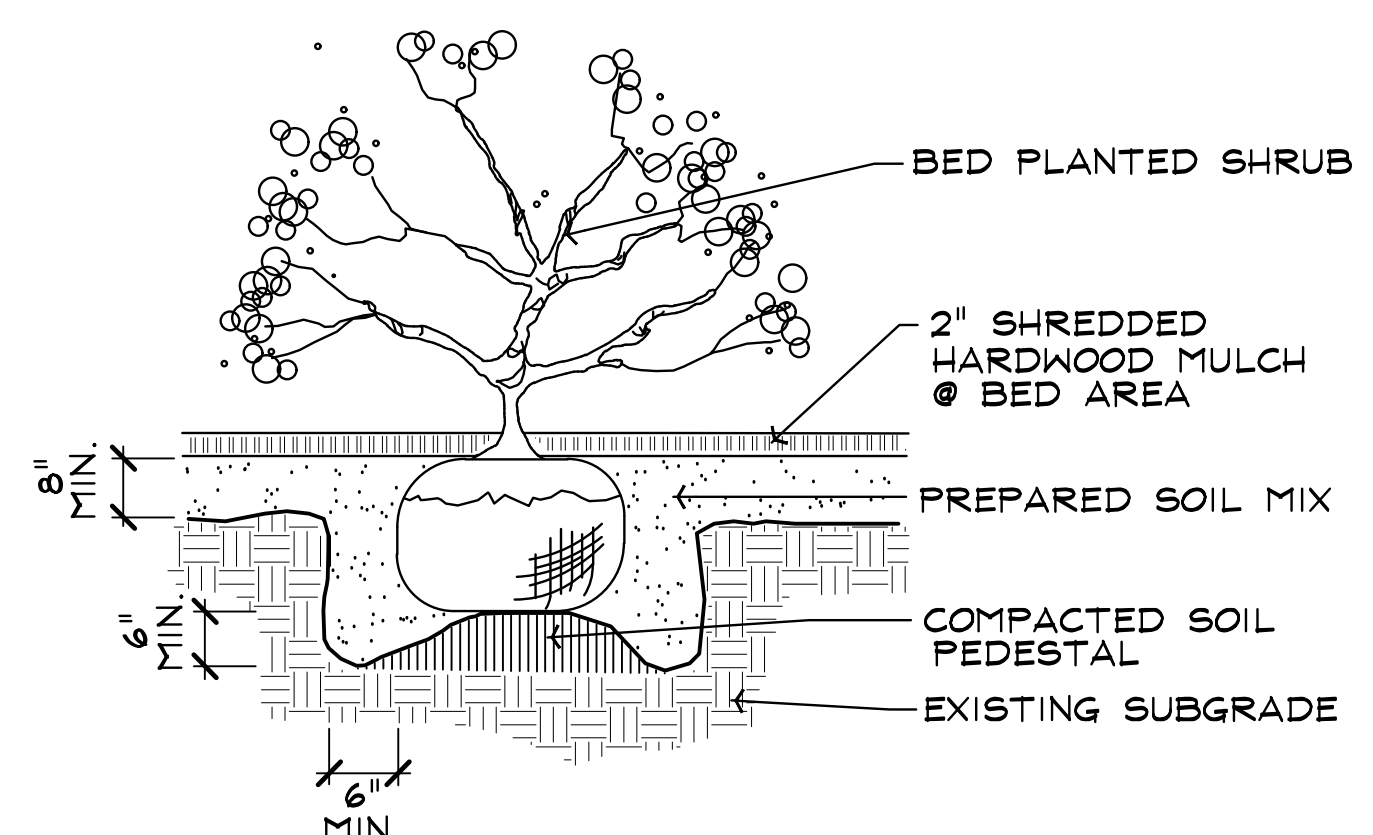
01/28/2024
"For regulatory approval.
NOT for construction."



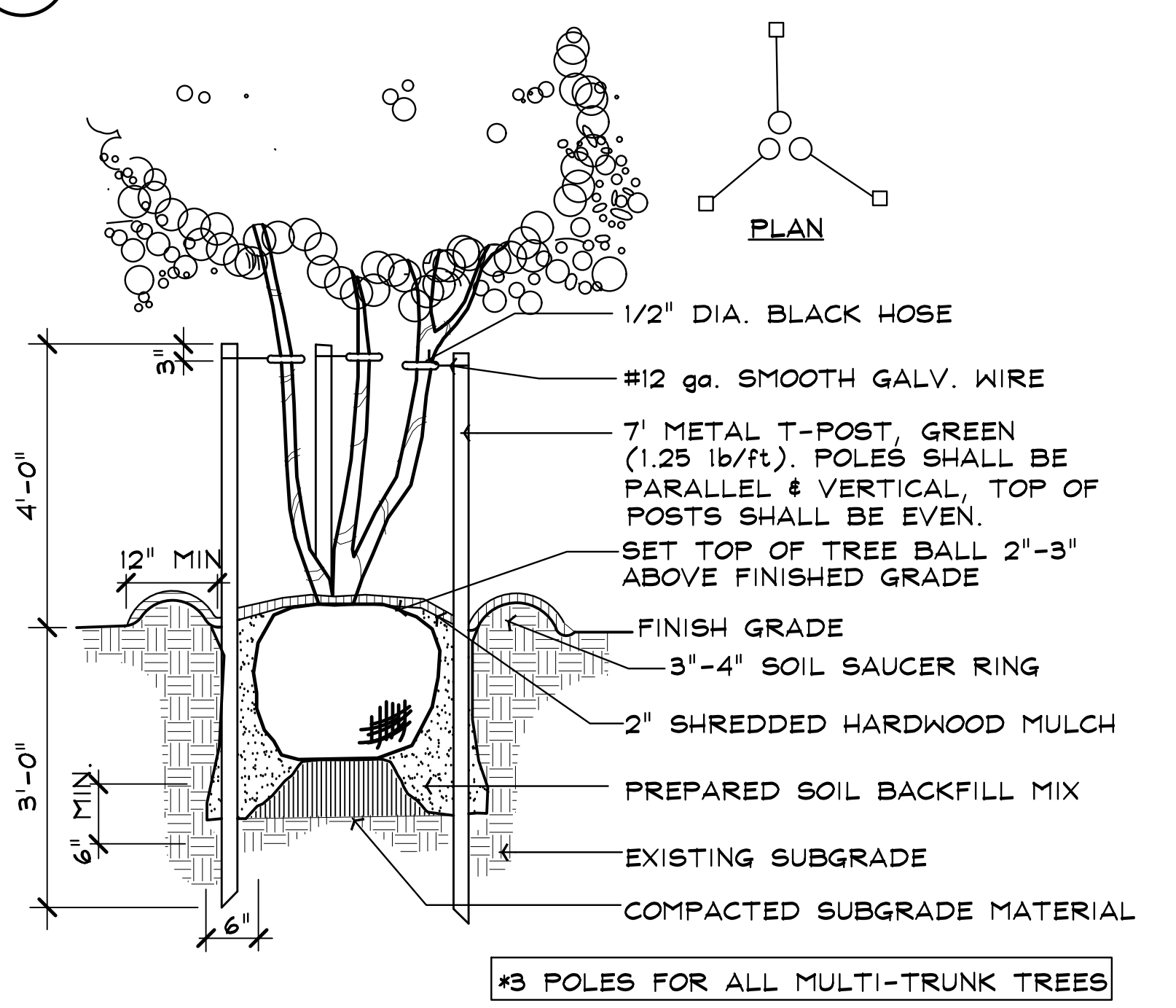
E SHOVEL CUT EDGE SCALE: NTS



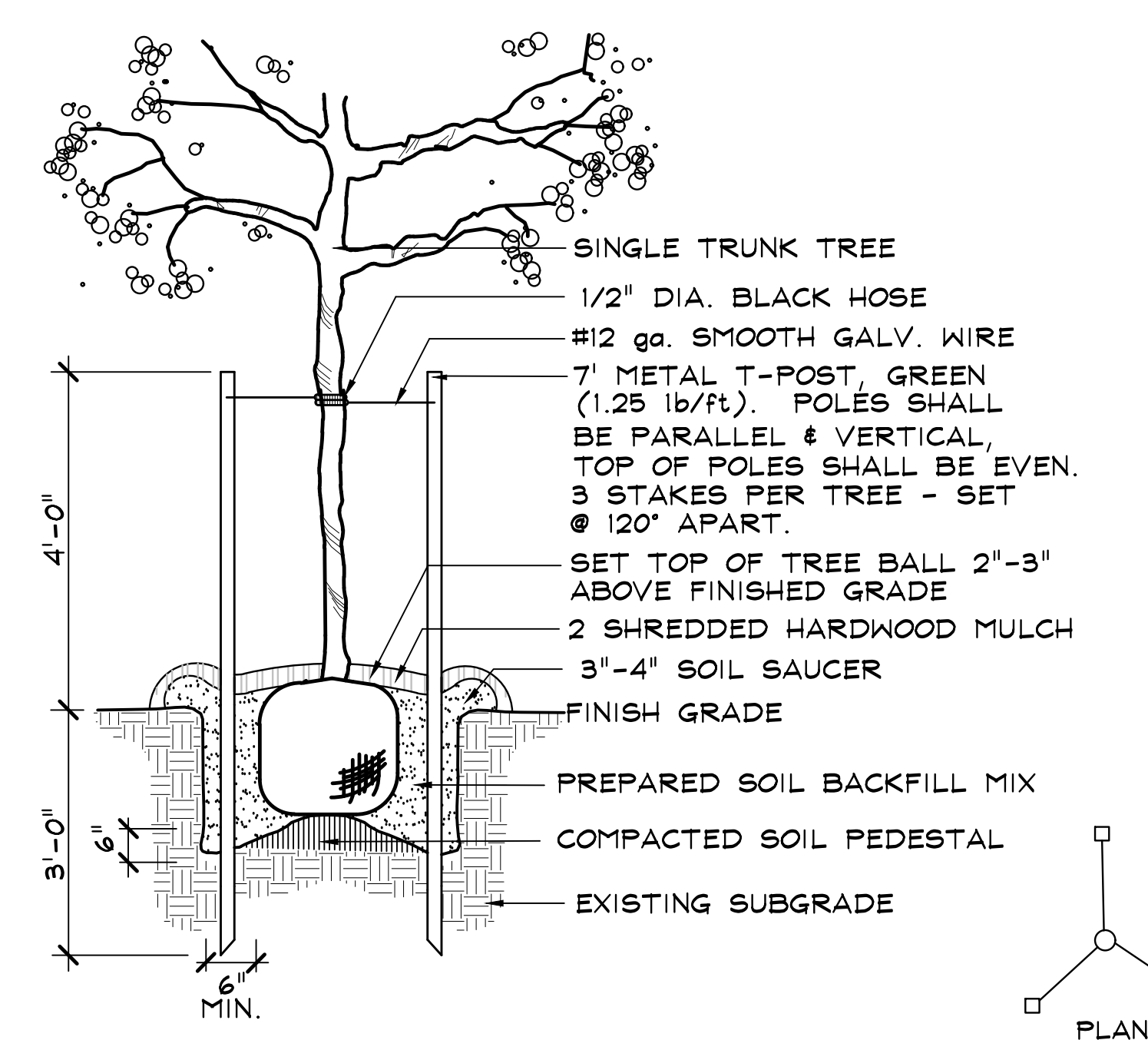
D GROUNDCOVER SCALE: NTS



C SHRUB BED SCALE: NTS



B MULTI-TRUNK STAKING SCALE: NTS



A SINGLE TRUNK STAKING SCALE: NTS

BOTANICAL NAME	COMMON NAME	SIZE	CONDITION	REMARKS
TREES				
<i>Quercus Virginiana</i>	Large Live Oak	200 GAL.	Container	16'-18' HT., 9'-10' SPRD., 5"-6" CAL., Full, Straight Trunk
<i>Quercus Virginiana</i>	Live Oak	65 GAL.	Container	12'-13' HT., 5'-6' SPRD., 2 1/2"-3" CAL., Full, Straight Trunk
<i>Quercus texana</i>	Nuttall Oak	65 GAL.	Container	12'-13' HT., 5'-6' SPRD., 2 1/2"-3" CAL., Full, Straight Trunk
<i>Quercus nigra</i>	Water Oak	65 GAL.	Container	12'-13' HT., 5'-6' SPRD., 2 1/2"-3" CAL., Full, Straight Trunk
<i>Ulmus crassifolia</i>	Cedar Elm	65 GAL.	Container	12'-13' HT., 5'-6' SPRD., 2 1/2"-3" CAL., Full, Straight Trunk
<i>Platanus Mexicana</i>	Mexican Sycamore	65 GAL.	Container	12'-13' HT., 5'-6' SPRD., 2 1/2"-3" CAL., Full, Straight Trunk
<i>Lagerstroemia indica 'Bashams Pink'</i>	Crape Myrtle	30 GAL.	Container	Single-Trunk, 8'-10' HT., 1 1/4"-1 1/2" CAL., 5'-6' SPRD., Matching
<i>Vitex agnus-castus</i>	Vitex	30 GAL.	Container	Multi-Trunk, 5'-6' HT., 4'-5' SPRD., 3-5 Canes, Full
<i>Ilex x attenuata 'Savannah'</i>	Savannah Holly	30 GAL.	Container	8'-10' HT., 4'-5' SPRD., 48" Clear Trunk, Straight Trunk
<i>Myrica cerifera</i>	Tree Form Waxmyrtle	30 GAL.	Container	Multi-Trunk, 5'-6' HT., 4'-5' SPRD., 3-5 Canes, Full
SHRUBS				
<i>Ligustrum sinense 'Sunshine'</i>	Sunshine Ligustrum	7 GAL.	Container	24"-30" HT., 20"-24" SPRD., Full Pot, 48" O.C.
<i>Myrica cerifera</i>	Waxmyrtle	7 GAL.	Container	42" HT., 36" SPRD., Full Pot, 5" O.C.
<i>Rosa x 'Radrazz'</i>	Red Knockout Rose	3 GAL.	Container	24"-30" HT., 20"-24" SPRD., Full Pot, 30" O.C., Red
<i>Muhlenbergia capillaris</i>	Gulf Muhly Grass	3 GAL.	Container	24" HT., 18"-24" SPRD., Full pot, Well-Rooted, 30" O.C.
<i>Nerium oleander 'Petite Pink'</i>	Petite Pink Oleander	3 GAL.	Container	18"-24" HT., 18"-24" SPRD., Full Pot, 30" O.C.
<i>Miscanthus sinensis 'Morning Light'</i>	Morning Light Miscanthus	3 GAL.	Container	30" HT., 12"-15" SPRD., Full Pot, Well-Rooted, 48" O.C.
<i>Rosa 'Meijocas' Pink Drift Rose</i>	Pink Drift Rose	3 GAL.	Container	15" HT., 12" SPRD., Full Pot, 24" O.C.
<i>Ilex vomitoria 'Nana'</i>	Duf. Yaupon Holly	3 GAL.	Container	12"-15" HT., 12"-15" SPRD., Full Pot, Well-Rooted, 24" O.C.
<i>Asparagus meyeri</i>	Foxtail Fern	3 GAL.	Container	Full, 15"-18" Ht & sprd., 24" o.c.
GROUNDCOVER				
<i>Trachelospermum asiaticum</i>	Asian Jasmine	1 GAL.	Container	Full Pot, Well-Rooted, 5-7 Runners, 15"-18" SPRD., 18" O.C.
<i>Phormium tenax 'Tiny Tiger'</i>	Flax Lily	1 GAL.	Container	10"-12" HT., 10"-12" SPRD., Full Pot, 18" O.C.
<i>Liriope muscari 'Evergreen Giant'</i>	Giant Lilyturf	1 GAL.	Container	Full Pot, Well-Rooted, 15"-18" HT., 12"-15" SPRD., 18" O.C.
Seasonally Appropriate	Seasonal Color	4" Pot	Container	Full, well rooted, 9" o.c. (species as dictated by season)
SOD/SEED				
<i>Cynodon dactylon 'Celebration Bermuda'</i>	Solid Sod Bermuda			See plans for location of proposed sod strips, sod infill. To be used in patch & repair as needed for disturbed areas of existing turf.
<i>Cynodon dactylon 'Common Bermuda'</i>	Hydrumulch Bermuda			See plans for location of proposed hydrumulch areas

Caldwell Crossing Sharp 1 Tract Recreation Center

D.R. Horton
Iowa Colony, TX

Landscape Details

Date: 01/28/2024
Scale: AS NOTED
Job No: 233-23-248
Revised:

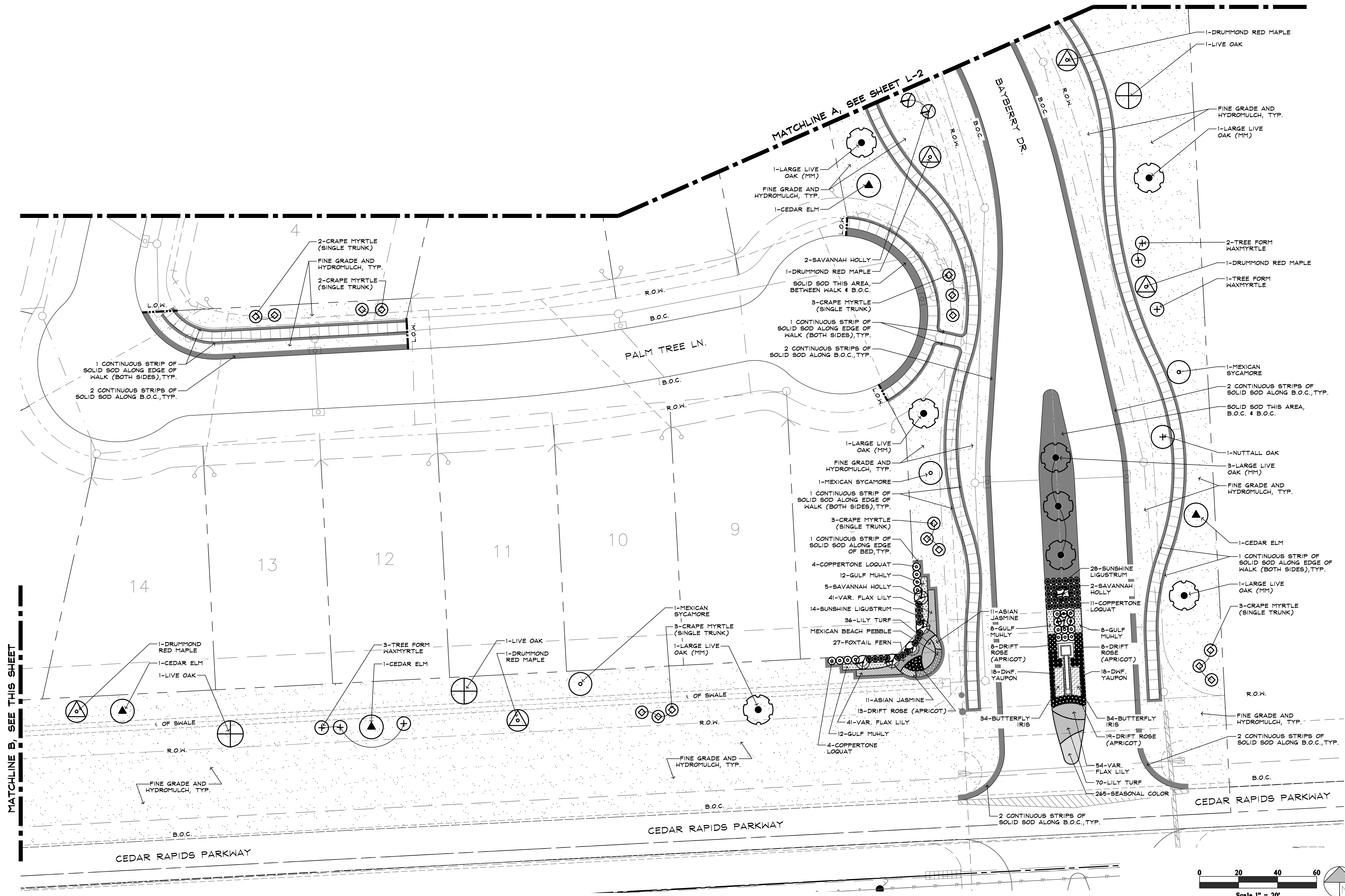
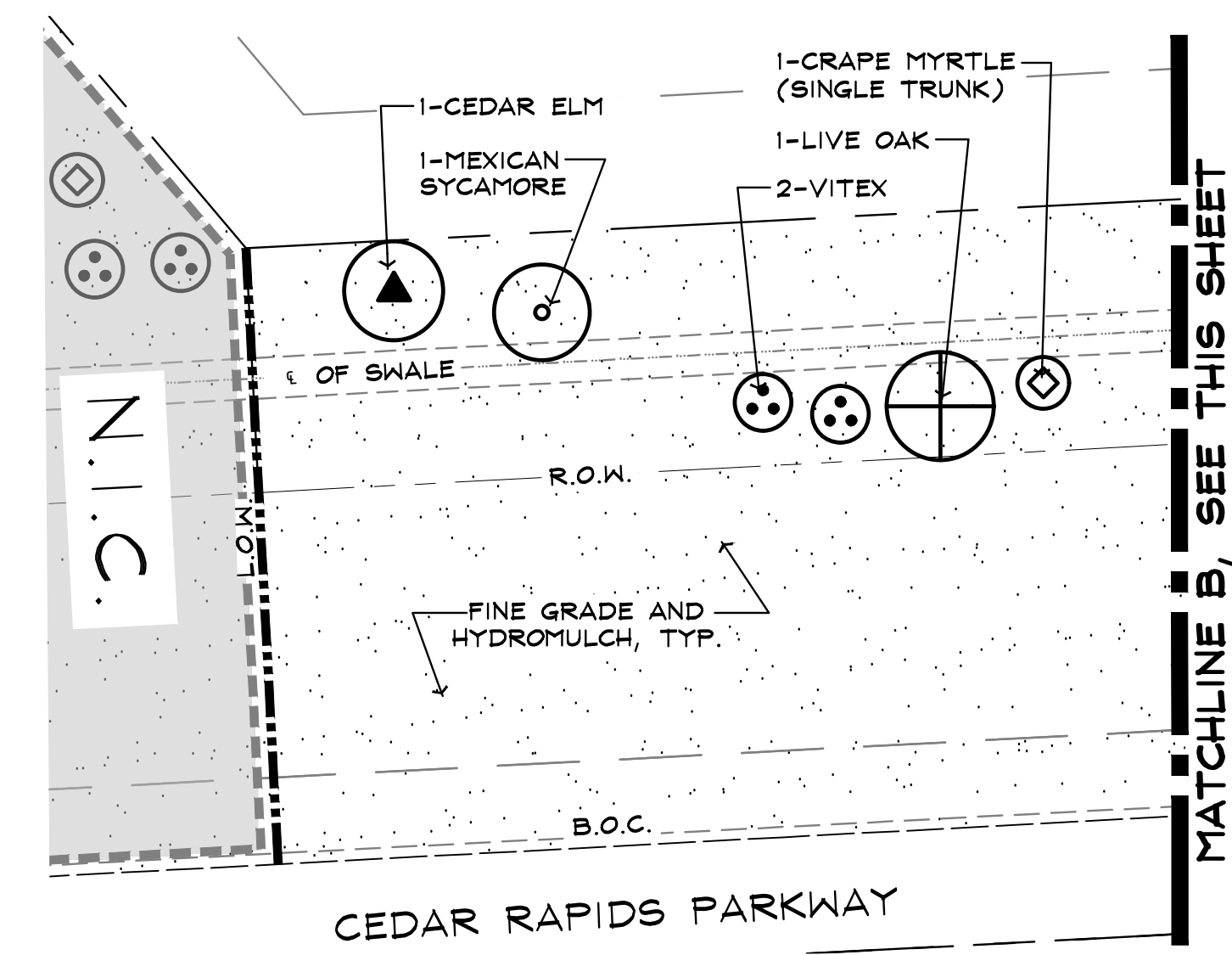
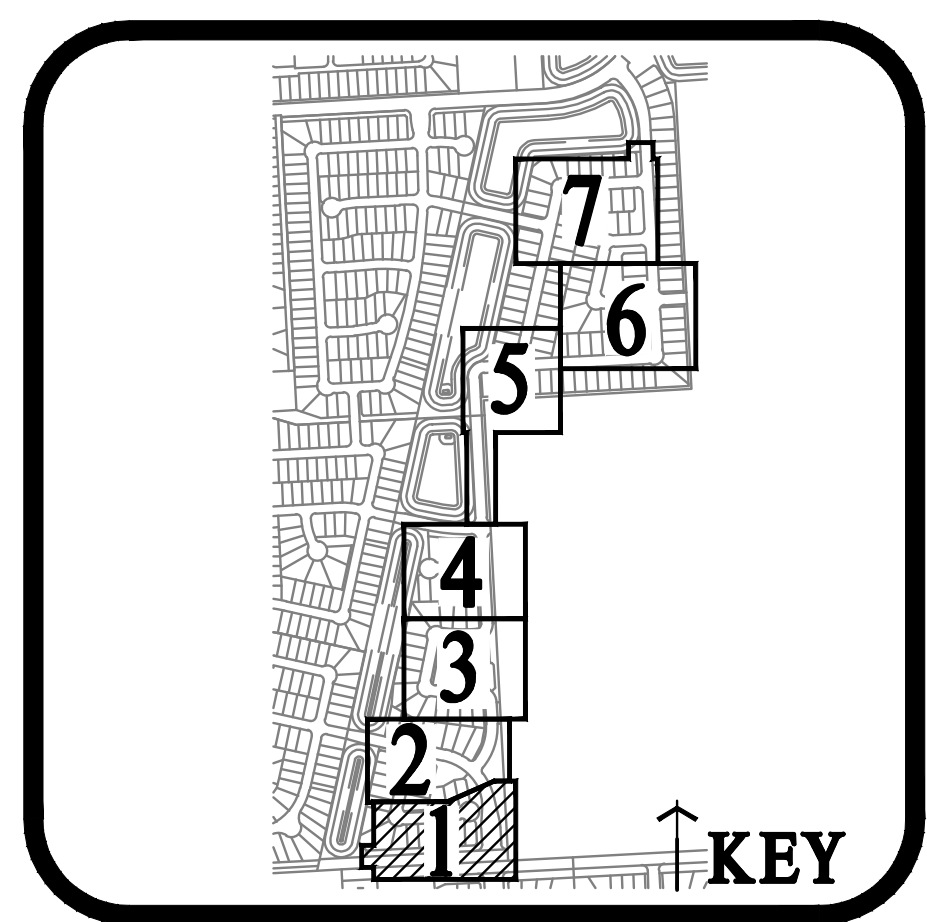


KGA DeForest
Landscape Architecture
24275 KATY FWY, #300 KATY, TX 77454
281.445.3932 KGADEFORREST.COM



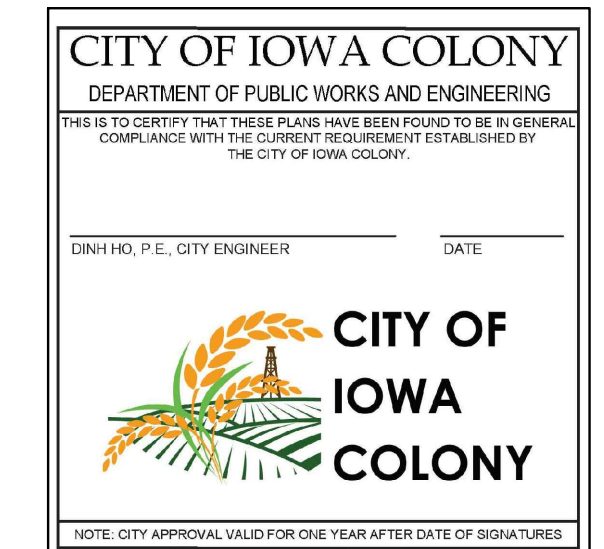
02/28/2024

"For regulatory approval.
NOT for construction."



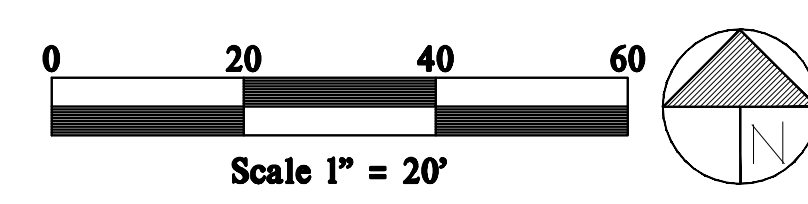
CALDWELL CROSSING SECTION 1 & 2 LANDSCAPE IMPROVEMENTS

D.R. Horton of Texas
Fort Bend County, TX



Landscape Plan

Date: 02/28/2024
Scale: 1"=20'-0"
Job No: 233-23-258
Revised:



L-1



KGA DeForest
Landscape Architecture
24275 KATY FWY, #300 KATY, TX 77454
281.646.3002 KGADEFORREST.COM



02/28/2024

"For regulatory approval.
NOT for construction."

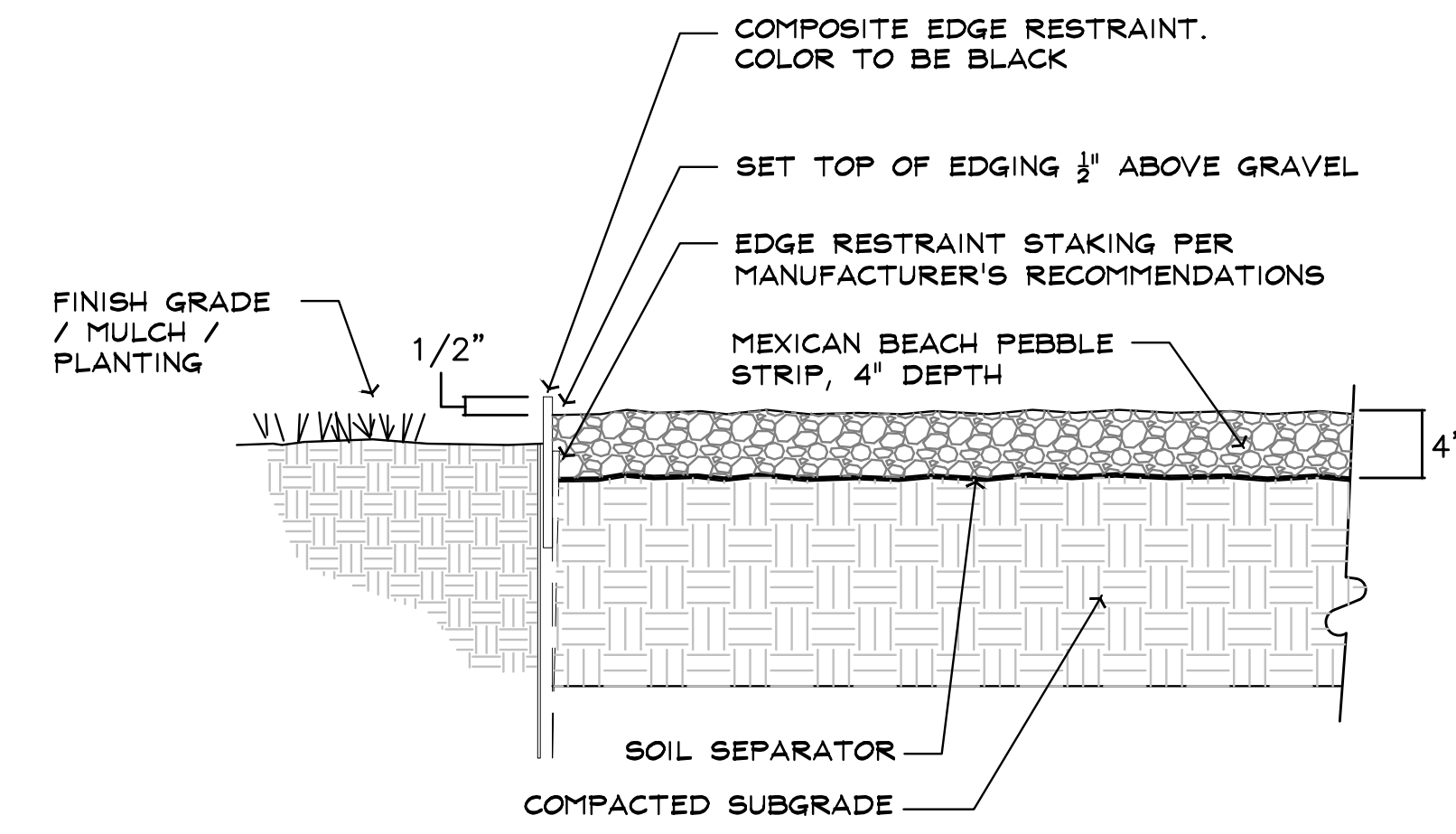
**CALDWELL CROSSING
SECTION 1 & 2 LANDSCAPE IMPROVEMENTS**
D.R. Horton of Texas
Fort Bend County, TX

BOTANICAL NAME	COMMON NAME	SIZE	CONDITION	REMARKS
TREES				
Quercus virginiana	Large Live Oak	200 GAL.	Machine Moved	Min. 6" Cal., 16'-18' HT., Min. 9' Sprd., Full, Straight Trunk, Matching
Quercus virginiana	Live Oak	65 GAL.	Container	3"-3 1/2" Caliper, 12'-14' Ht., 6'-7' sprd., full, straight trunk, matching
Ulmus crassifolia	Cedar Elm	65 GAL.	Container	3"-3 1/2" Caliper, 12'-14' Ht., 6'-7' sprd., full, straight trunk, matching
Platanus mexicana	Mexican Sycamore	65 GAL.	Container	3"-3 1/2" Caliper, 12'-14' Ht., 6'-7' sprd., full, straight trunk, matching
Quercus texana	Nuttall Oak	65 GAL.	Container	3"-3 1/2" Caliper, 12'-14' Ht., 6'-7' sprd., full, straight trunk, matching
Acer rubrum drummondii	Drummond Red Maple	65 GAL.	Container	3"-3 1/2" Caliper, 12'-14' Ht., 6'-7' sprd., full, straight trunk, matching
Myrica cerifer	Tree Form Waxmyrtle	30 GAL.	Container	Multi-trunk, 3-5 canes, 6' min. ht, 4' min. spread, full to ground
Lagerstroemia indica 'Muskogee'	Crape Myrtle (Single Trunk)	30 GAL.	Container	Single Trunk, 2" cal., 8'-10' ht., 4'-5' sprd., full
Vitex agnus-castus	Vitex	30 GAL.	Container	Multi-trunk, 6' Min Ht., 48" Min sprd.
Ilex x attenuata 'Savannah'	Savannah Holly (Tree Form)	30 GAL.	Container	8'-10' HT., 4'-5' SPRD., 48" Clear Trunk, straight Single-Trunk
SHRUBS/GROUNDCOVERS				
Eriobotrya Japonica 'Coppertone'	Coppertone Loquat	7 GAL.	Container	36" min. ht. 30" sprd. full pot, well rooted, 48" o.c.
Myrica cerifera	Waxmyrtle	7 GAL.	Container	30"-36" Ht. 30" sprd., full to ground, well rooted, 48" o.c.
Ligustrum Sinense 'Sunshine'	Sunshine Ligustrum	7 GAL.	Container	24"-30" Ht., 18"-24" Sprd., Full Pot, 36" O.C.
Miscanthus sinensis 'Morning Light'	Miscanthus 'Morning Light'	3 GAL.	Container	24"-30" HT., 20"-24" Sprd., Full Pot, Well-Rooted, 48" O.C.
Nerium oleander 'petite pink'	Pink Dwarf Oleander	3 GAL.	Container	18"-24" Ht., 18" min sprd., full pot, 30" o.c.
Rosa x 'Radrazz'	Knockout Rose	3 GAL.	Container	18"-24" Ht., 18"-24" Sprd., Full Pot, 30" O.C., Pink
Rosa 'Meiminrate'	Drift Rose (Apricot Drift)	3 GAL.	Container	15" min. HT., 15" min. Sprd., Full Pot, Well-Rooted, 24" O.C.
Ilex vomitoria 'nana'	Dwarf Yaupon	3 GAL.	Container	15" min. HT., 15" min. Sprd., Full Pot, Well-Rooted, 24" O.C.
Muhlenbergia capillaris	Gulf Muhly	3 GAL.	Container	24"-30" HT., 20"-24" Sprd., Full Pot, Well-Rooted, 30" O.C.
Asparagus 'Meyeri'	Festool Fern	3 GAL.	Container	15" Ht. and Sprd., Full Pot, Well Rooted, 24" O.C.
Dietes grandiflora	Butterfly Iris	3 GAL.	Container	15"-18" Ht. 12" sprd., full pot, well rooted, 18" o.c.
Dianella Tasmanica 'Variegata'	Variegated Flax Lily	1 GAL.	Container	12"-15" Ht. and Sprd., Full Pot, Well Rooted, 18" O.C.
Trachelospermum asiaticum	Asian Jasmine	1 GAL.	Container	5-7 runners, 15"-18" spread, Full pot, well rooted, 18" o.c.
Liriope muscari	Lily Turf	1 GAL.	Container	6"-10" ht., 12" sprd., full pot, well rooted, 18" O.C.
Seasonally Appropriate	Seasonal Color	4"	Container	Full, well rooted, 9" o.c.
SOD/SEED				
Cynodon dactylon 'Celebration Bermuda'	Solid Sod			See plans for location of proposed sod strips, sod infill. To be used in patch & repair as needed for disturbed areas of existing turf.
Cynodon dactylon 'Common Bermuda'	Hydromulch			See plans for location of proposed hydromulch areas

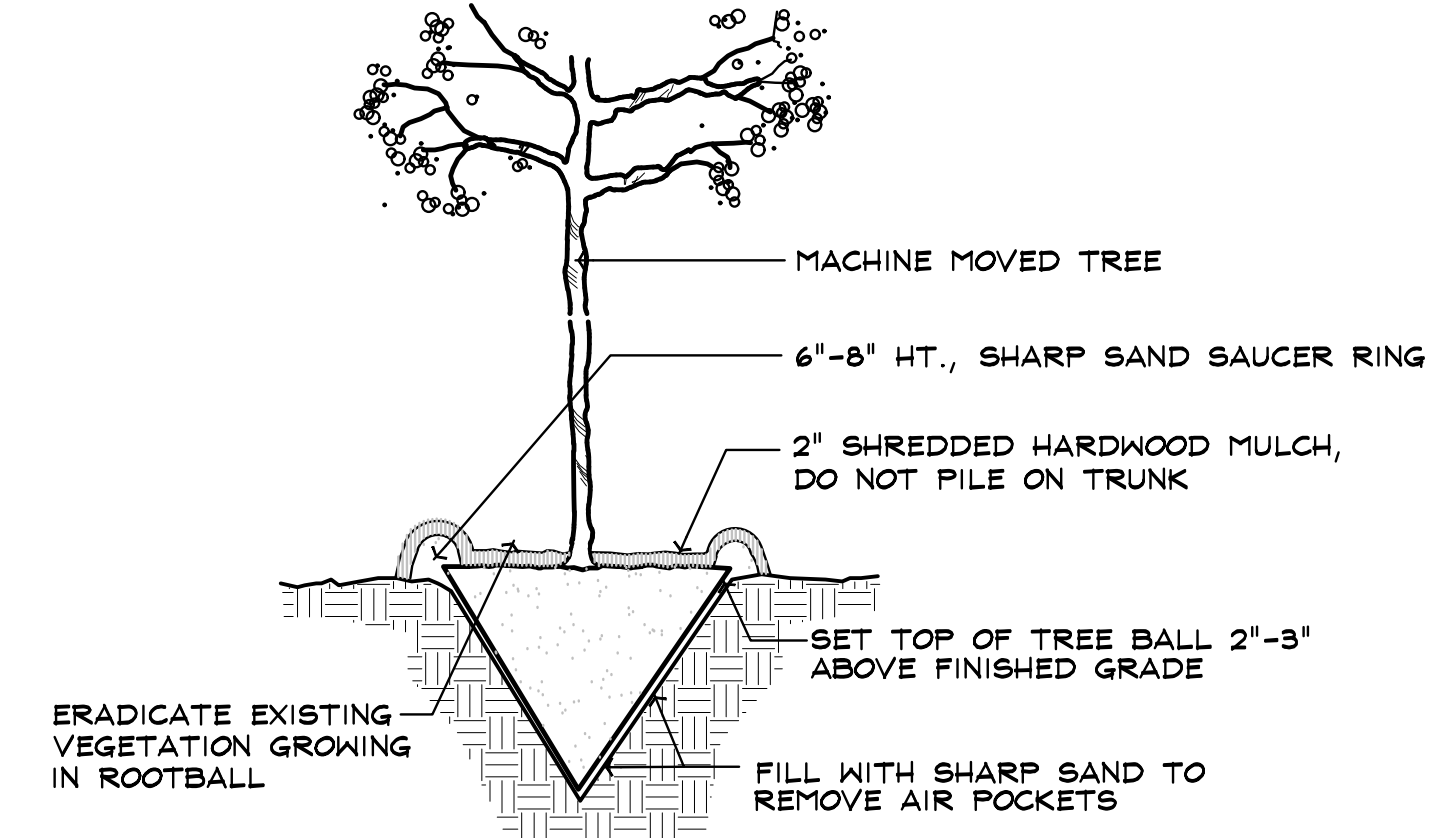
ALL DISTURBED AREAS NOT DESIGNATED FOR PLANTING AND WITHIN LIMITS SHOWN ON PLANS TO BE HYDROMULCHED WITH BERMUDA GRASS SEED
**** NOTE: ALL SOD TO BE BERMUDA GRASS.

MATERIAL SCHEDULE

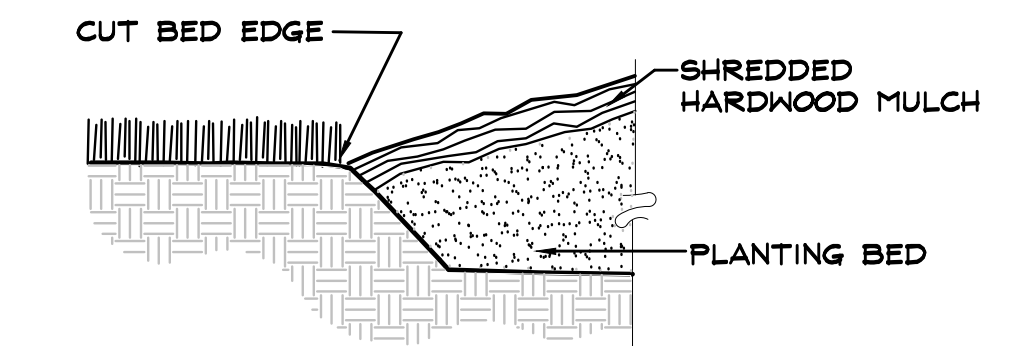
Item	Color	Finish / Pattern	Manufacturer / Local Representative	General Notes
GRAVEL	BLACK	MEXICAN BEACH PEBBLES SIZE: 2"-3"	SUPPLIER: ALAMO STONE CONTACT: HUGH ACHÉ PH: 281-240-4600	INSTALL PER MANUFACTURER'S RECOMMENDATIONS. PROVIDE COLOR SAMPLES TO LANDSCAPE ARCHITECT PRIOR TO PURCHASE/FABRICATION. NOTIFY LANDSCAPE ARCHITECT IMMEDIATELY OF ANY VARIATION BETWEEN PLANS AND SITE CONDITIONS.
COMPOSITE EDGING	BLACK	-	-	REQUIRED AT ALL PERIMETER OF PEBBLE BEDS & WHEN SEPARATING 2 TYPES OF PEBBLE IN SAME BED. INSTALL PER MANUFACTURER'S SPECIFICATIONS. NOTIFY KGA DEFORREST IMMEDIATELY OF ANY VARIATION BETWEEN PLANS & SITE CONDITIONS.



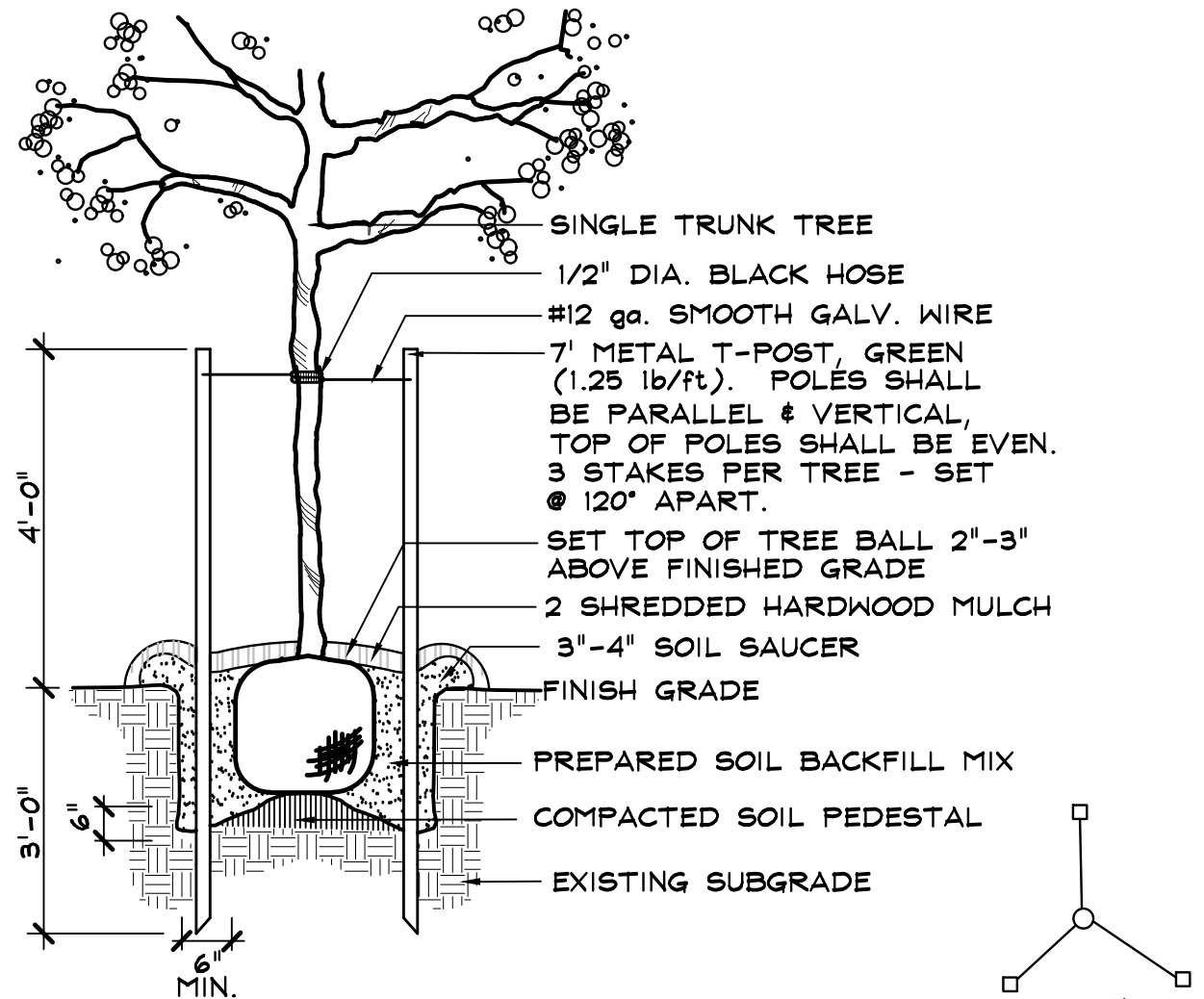
G COMPOSITE EDGING AT MEXICAN BEACH PEBBLE STRIP NTS



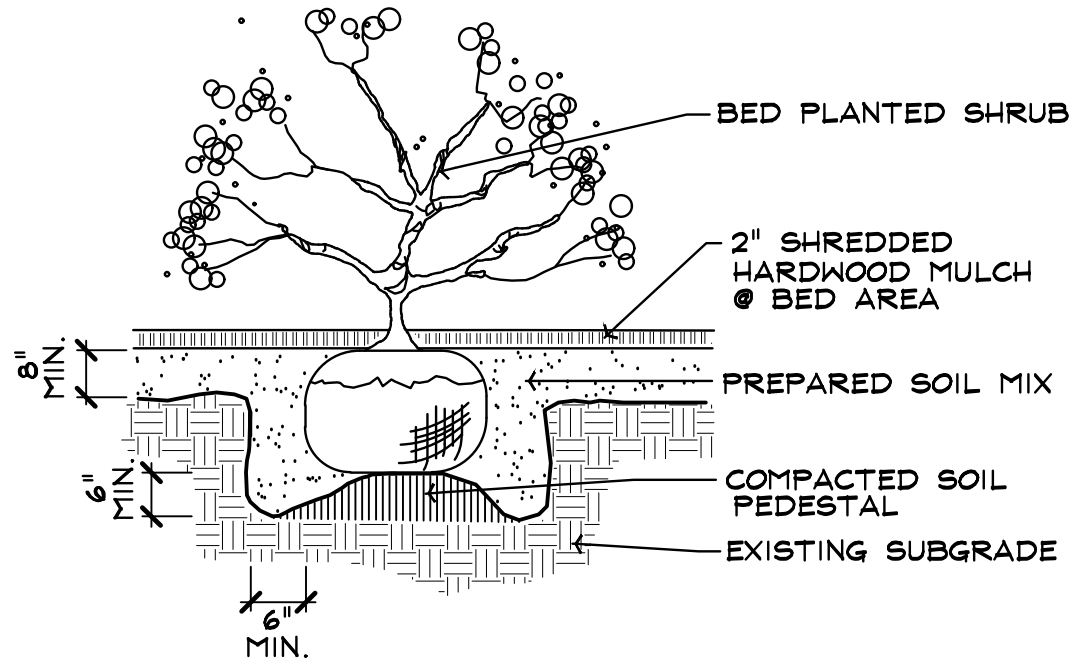
F MACHINE MOVED TREE NTS



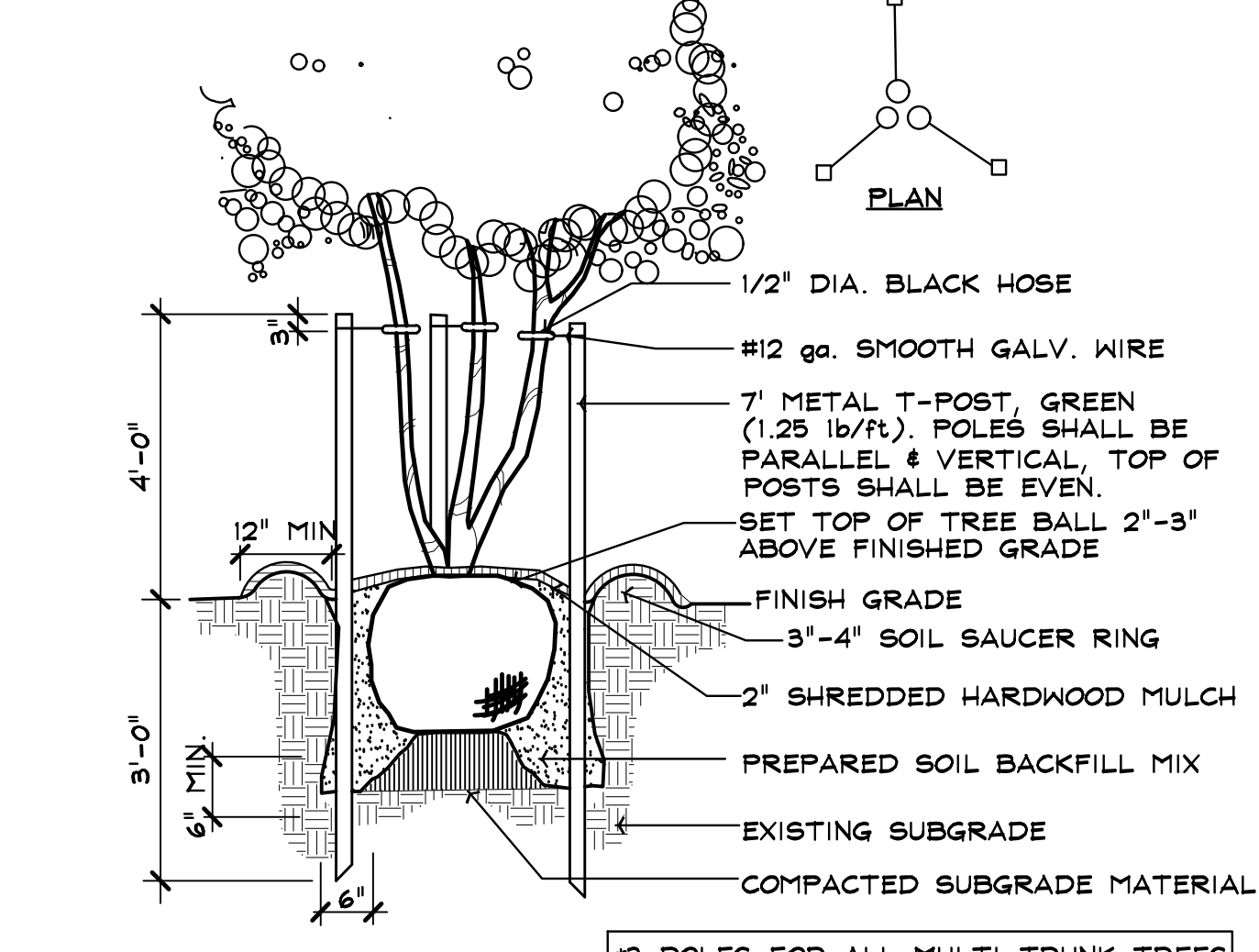
C SHOVEL CUT BED EDGE NTS



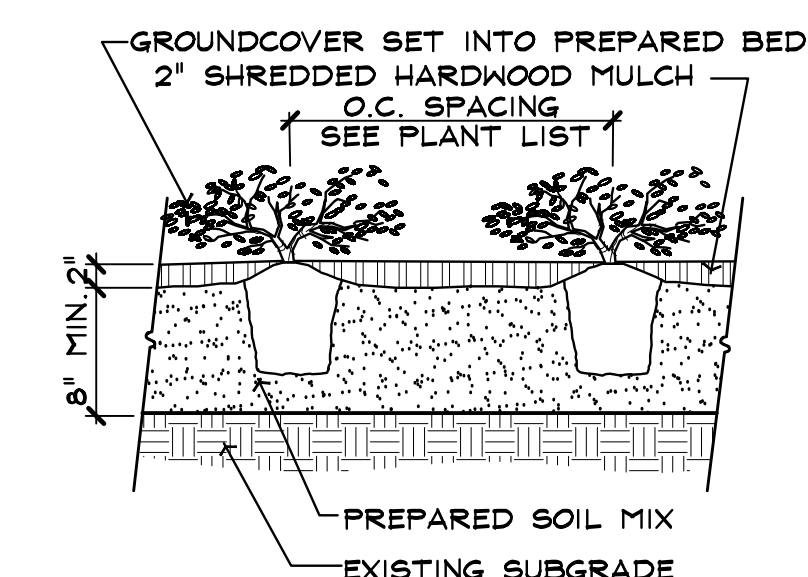
E STAKING DETAIL NTS



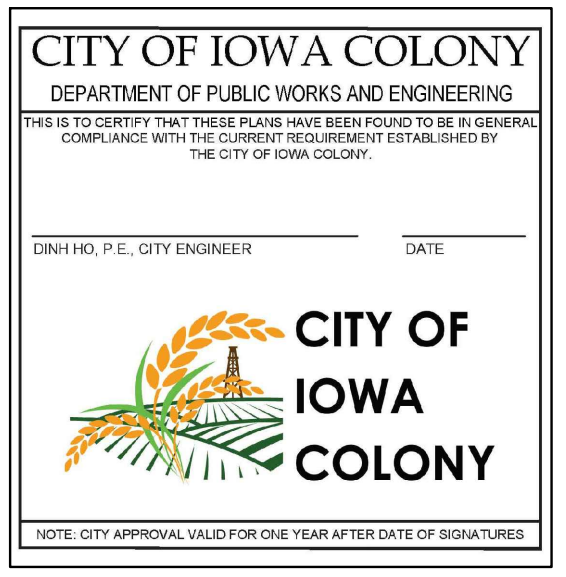
B BED PLANTED SHRUB NTS



D MULTI TRUNK TREE STAKING NTS



A GROUNDCOVER PLANTING NTS



City of Iowa Colony
DEPARTMENT OF PUBLIC WORKS AND ENGINEERING
DATE: 02/28/2024
SCALE: AS SHOWN
JOB NO: 233-23-258
REVISOR: