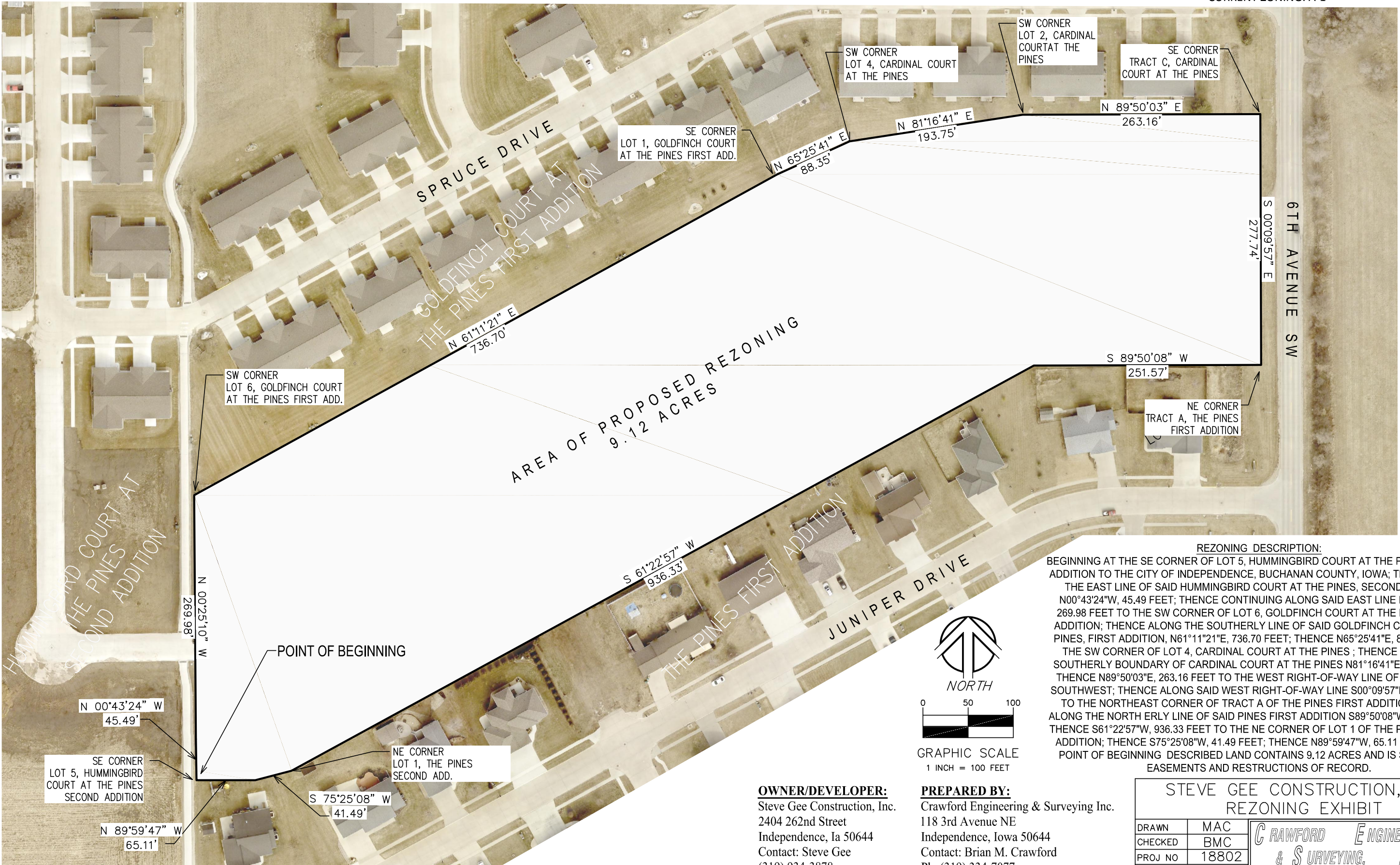
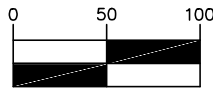


REZONING EXHIBIT

- PROPOSED ZONING: R-2
- CURRENT ZONING: A-1



REZONING DESCRIPTION:
BEGINNING AT THE SE CORNER OF LOT 5, HUMMINGBIRD COURT AT THE PINES, SECOND ADDITION TO THE CITY OF INDEPENDENCE, BUCHANAN COUNTY, IOWA; THENCE ALONG THE EAST LINE OF SAID HUMMINGBIRD COURT AT THE PINES, SECOND ADDITION, N00°43'24"W, 45.49 FEET; THENCE CONTINUING ALONG SAID EAST LINE N00°25'10"W, 269.98 FEET TO THE SW CORNER OF LOT 6, GOLDFINCH COURT AT THE PINES, FIRST ADDITION; THENCE ALONG THE SOUTHERLY LINE OF SAID GOLDFINCH COURT AT THE PINES, FIRST ADDITION, N61°11'21"E, 736.70 FEET; THENCE N65°25'41"E, 88.35 FEET TO THE SW CORNER OF LOT 4, CARDINAL COURT AT THE PINES; THENCE ALONG THE SOUTHERLY BOUNDARY OF CARDINAL COURT AT THE PINES N81°16'41"E, 193.75 FEET; THENCE N89°50'03"E, 263.16 FEET TO THE WEST RIGHT-OF-WAY LINE OF 6TH AVENUE SOUTHWEST; THENCE ALONG SAID WEST RIGHT-OF-WAY LINE S00°09'57"E, 277.74 FEET TO THE NORTHEAST CORNER OF TRACT A OF THE PINES FIRST ADDITION; THENCE ALONG THE NORTH ERLY LINE OF SAID PINES FIRST ADDITION S89°50'08"W, 251.57 FEET; THENCE S61°22'57"W, 936.33 FEET TO THE NE CORNER OF LOT 1 OF THE PINES SECOND ADDITION; THENCE S75°25'08"W, 41.49 FEET; THENCE N89°59'47"W, 65.11 FEET TO THE POINT OF BEGINNING DESCRIBED LAND CONTAINS 9.12 ACRES AND IS SUBJECT TO EASEMENTS AND RESTRUCTIONS OF RECORD.



GRAPHIC SCALE
1 INCH = 100 FEET

OWNER/DEVELOPER:
Steve Gee Construction, Inc.
2404 262nd Street
Independence, Ia 50644
Contact: Steve Gee
(319) 934-3878

PREPARED BY:
Crawford Engineering & Surveying Inc.
118 3rd Avenue NE
Independence, Iowa 50644
Contact: Brian M. Crawford
Ph: (319) 334-7077

STEVE GEE CONSTRUCTION, INC.
REZONING EXHIBIT

DRAWN	MAC
CHECKED	BMC
PROJ NO	18802
CADD FILE	

CRAWFORD ENGINEERING & SURVEYING, INC.
118 3rd Ave NE Independence, Iowa 50644