

**ROLLING HILLS PHASES 8-11 – PRELIMINARY PLAT**

**1300 E 480 SOUTH**

**CITY COUNCIL MEETING**

**FEBRUARY 18, 2021**

Summary: Kartchner Homes is seeking preliminary approval for 44 single family lots to be built on approximately 24 acres. Lot sizes will range from 12,500 square feet to 51,480 square feet.

ZONING: R-2 Residential

UTILITIES:

Power:	To be constructed with development
Culinary:	To be constructed with development
Sewer:	To be constructed with development
Irrigation:	To be constructed with development

PARKING & ROADS: To be constructed with development

NOTES:





ROLLING HILLS SUBDIVISION  
 PHASE 8-11  
 PART OF THE NORTH HALF OF SECTION 9  
 TOWNSHIP 10 NORTH RANGE 1 EAST  
 SALT LAKE BASE AND MERIDIAN  
 550 SOUTH, 400 EAST  
 HYRUM, UTAH  
 PROPOSED PLAN

NORTH

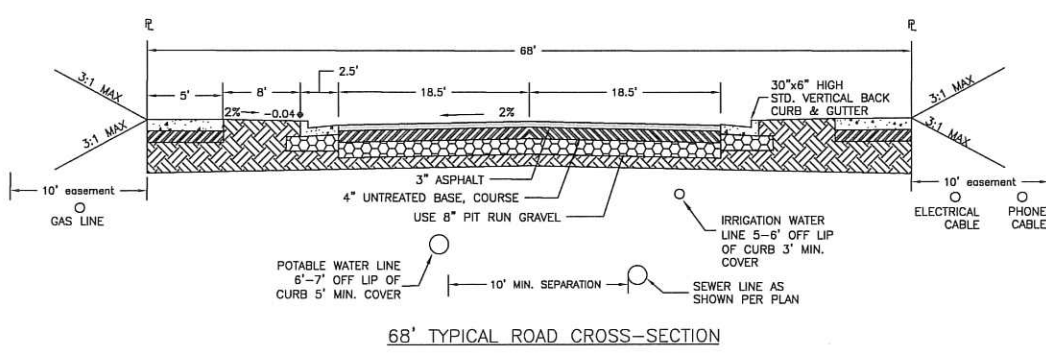
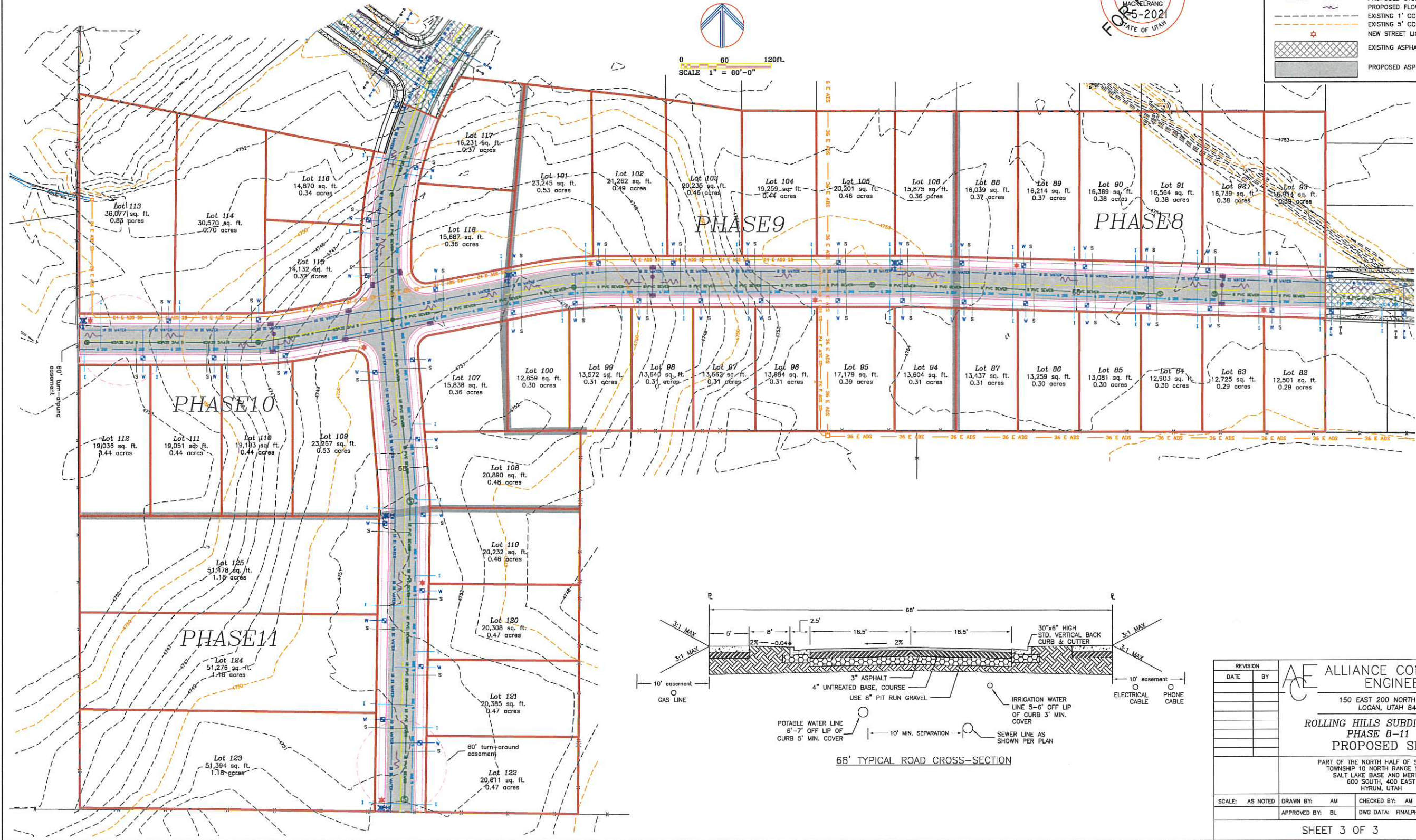


0 80 120ft.  
 SCALE 1" = 60'-0"



LEGEND

	SUBDIVISION BOUNDARY
	EXISTING WATER AS NOTED
	PROPOSED WATER AS NOTED
	EXISTING SEWER AS NOTED
	PROPOSED SEWER AS NOTED
	EXISTING IRRIGATION AS NOTED
	PROPOSED IRRIGATION AS NOTED
	EXISTING STORM AS NOTED
	PROPOSED STORM AS NOTED
	PROPOSED FLOW DIRECTION
	EXISTING 1' CONTOUR
	EXISTING 5' CONTOUR
	NEW STREET LIGHT
	EXISTING ASPHALT
	PROPOSED ASPHALT



REVISION		DATE		BY	
ALLIANCE CONSULTING ENGINEERS 150 EAST 200 NORTH SUITE P LOGAN, UTAH 84321					
ROLLING HILLS SUBDIVISION, PHASE 8-11 PROPOSED SITE					
PART OF THE NORTH HALF OF SECTION 9 TOWNSHIP 10 NORTH RANGE 1 EAST SALT LAKE BASE AND MERIDIAN 600 SOUTH, 400 EAST HYRUM, UTAH					
SCALE: AS NOTED	DRAWN BY: AM	CHECKED BY: AM	DATE: 1-2021		
	APPROVED BY: BL	DWG DATA: FINALPHV2.DWG			
SHEET 3 OF 3					