

HYRUM CITY – NORTH SUBSTATION

SITE PLAN

355 WEST 700 NORTH

CITY COUNCIL MEETING

OCTOBER 20, 2022

Summary: Hyrum City is constructing a new power substation to serve the increasing industrial growth on the north end of the city. Increased power demand and constraints have led the city power department to start working on additional generation. This project is expandable for future growth.

ZONING: M-2 Industrial

UTILITIES:

Power:	Available
Culinary:	To be provided
Sewer:	To be provided
Irrigation:	Not Available

PARKING & ROADS: Parking will be provided internally for Power Department employees only and maintenance personnel from Wheeler Caterpillar. The road is expected to be built out at a future date when the industry in this area warrants the development.

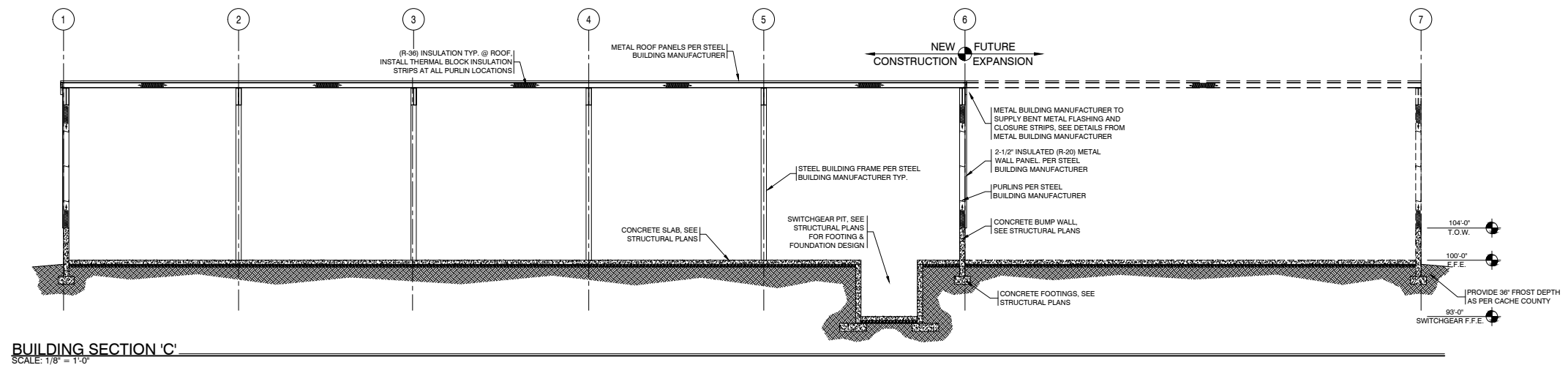
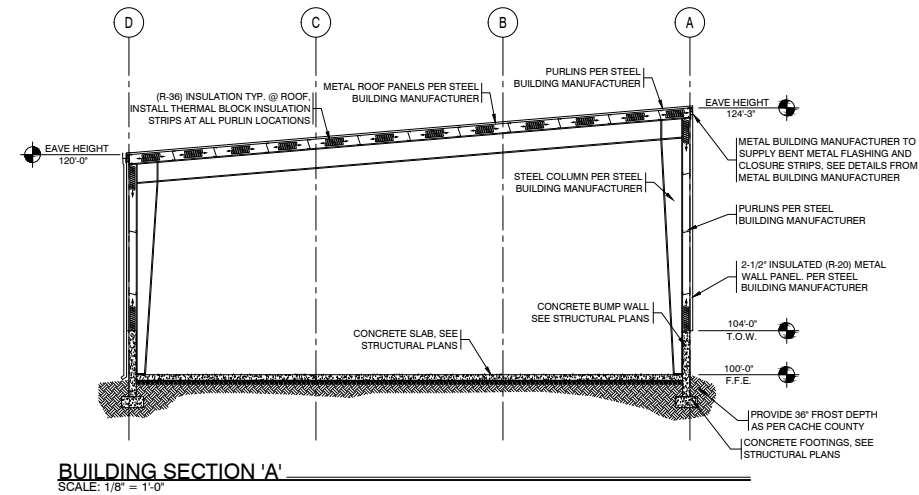
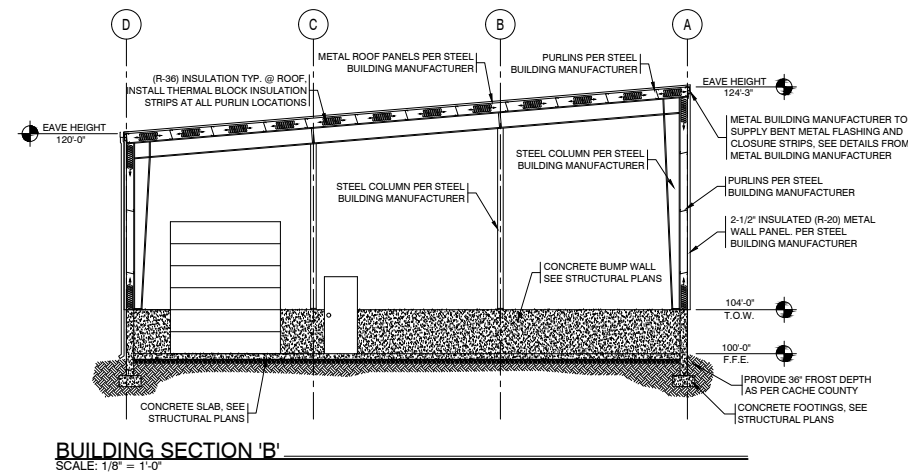
NOTES:

Typical site plans call for landscaping to be provided. Due to the nature of substations these are typically kept clear of trees and taller vegetation. Consideration may be given to landscaping requirements for this site due to safety concerns.

The generation facility will include a metal building to house three 2.5 mega-watt generators. The generators will be powered by natural gas. There will be room for an additional two generators in the future.

Exterior appurtenances will include heat exchangers, transformers. Exhaust will be directed upward to reduce the noise pollution.

A wall will be built enclosing the site except for the south boundary. A chain link fence will be installed on the south side to allow for efficient exchange of air.



8/26/2022
DATE:
22063
JOB NUMBER:
1/8" = 1'
SCALE:
D.S.
DRAWN:
J.J.M.
CHECKED:



73 EAST 100 SOUTH
P.O. BOX 2775
ST. GEORGE UTAH 84770
(435) 628-2377 (435) 673-3580 fax
www.mrwdesign.com

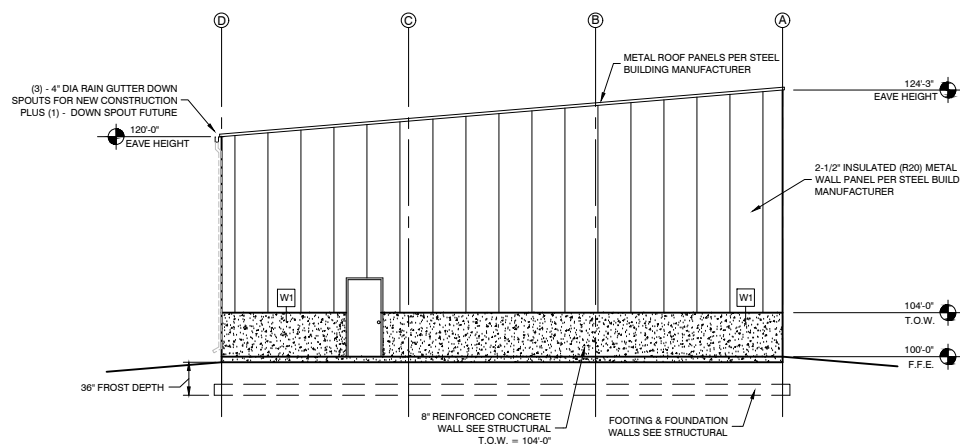
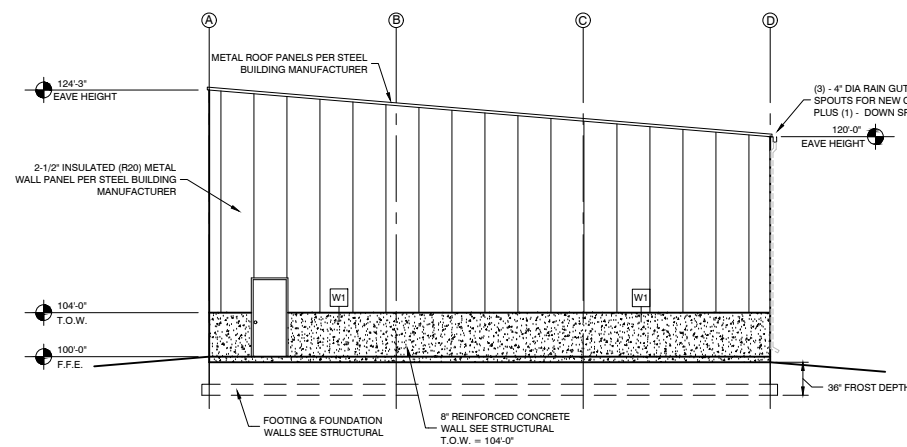
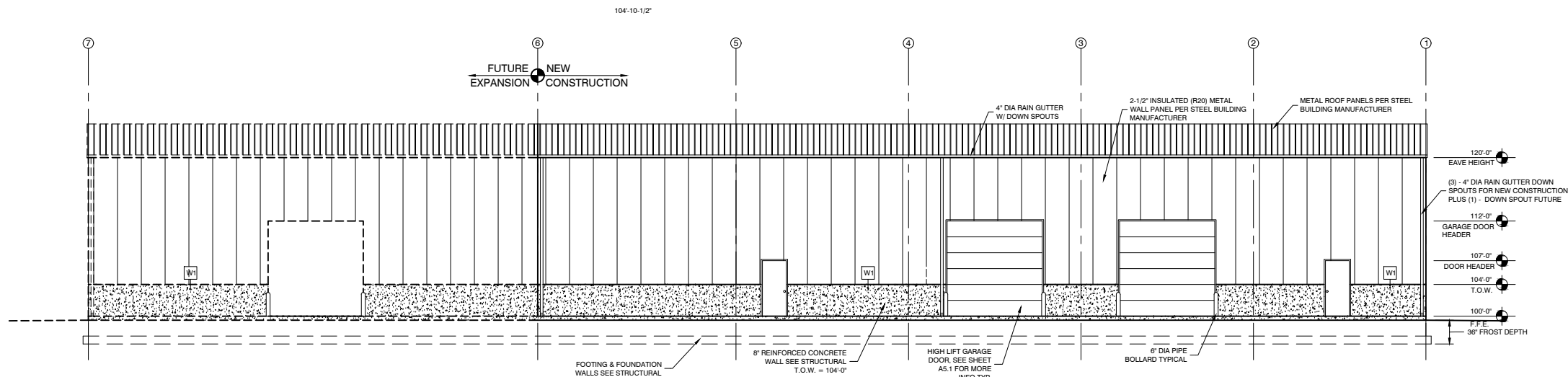
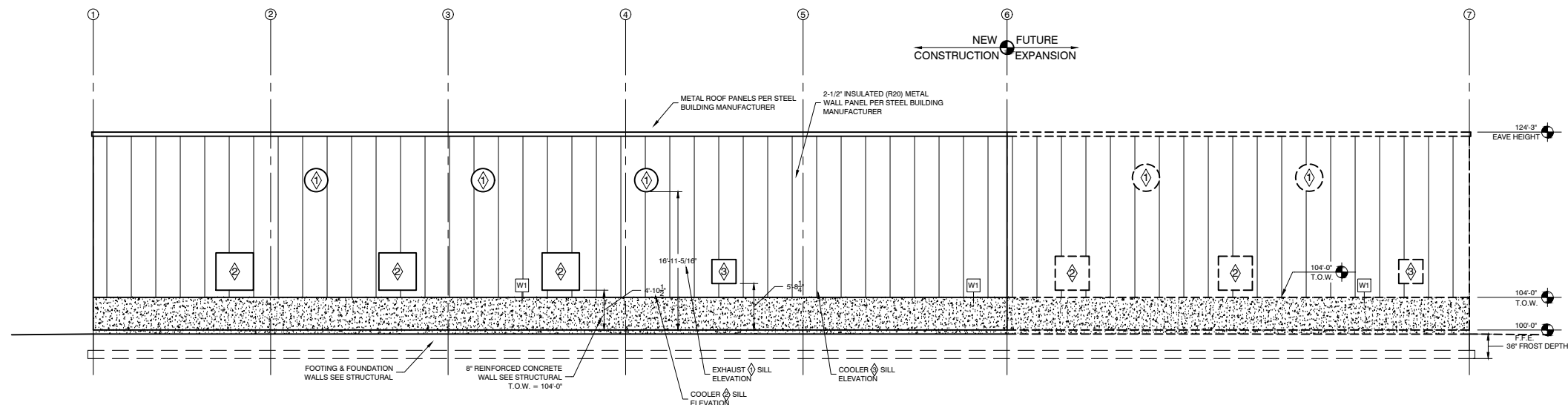
BUILDING SECTIONS
HYRUM CITY POWER
700 NORTH 400 WEST
HYRUM, UTAH 84319



DESIGN
ASSOCIATES INC.
ARCHITECTURE &
CONSULTING ENGINEERS

73 EAST 100 SOUTH
P.O. BOX 2775
ST. GEORGE UTAH 84770
(435) 628-2377 (435) 673-3580 fax
www.mrwdesign.com

MAIN FLOOR PLAN
HYRUM CITY POWER
700 NORTH 400 WEST
HYRUM, UTAH 84319



WALL TYPES

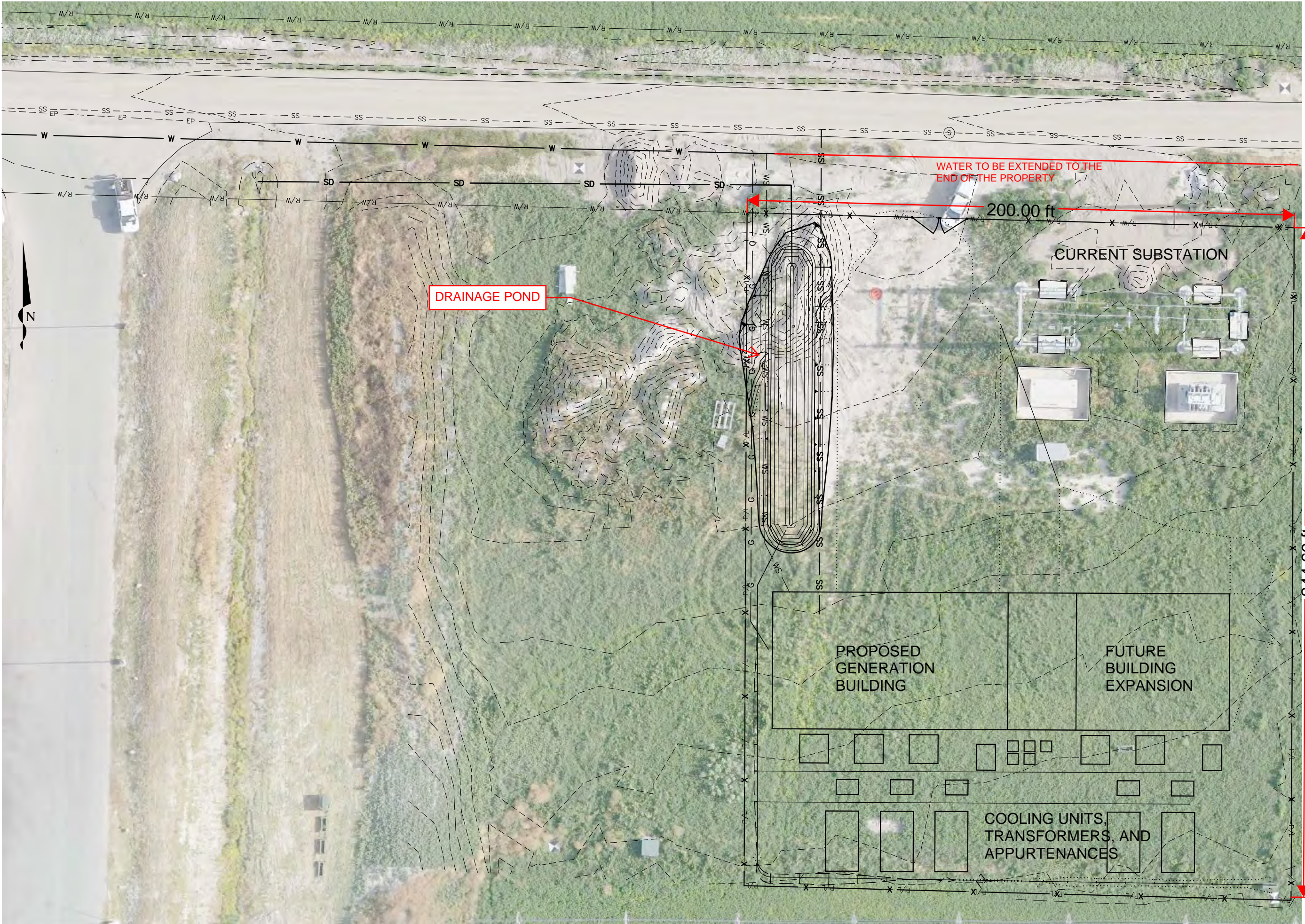
- W1 PRE-FABRICATED METAL BUILDING WALLS WITH CONTINUOUS INSULATED METAL PANELS. (2.5" THICK PANELS TO PROVIDE R-20 MIN. INSULATION)
- 4'-0" TALL 8" REINFORCED CONCRETE WALL AT BASE. SEE STRUCTURAL PLANS FOR MORE INFORMATION.
- EXTERIOR: INSULATED METAL PANELS AND FIELD APPLIED STONE WAINSCOT OVER CONC. STEM WALL
- INTERIOR: EXPOSED METAL BUILDING & INSULATED METAL PANELS

KEYED NOTES

- WALL OPENING FOR GENERATOR EXHAUST 34" Ø, SILL HEIGHT = 16'-11-5/16".
- WALL OPENING FOR SWAMP COOLER 55" X 55", SILL HEIGHT = 4'-10-1/2".
- WALL OPENING FOR COOLER 35.5" X 35.5", SILL HEIGHT = 5'-8-1/4".

LEGEND

- DOOR TAG, SEE DOOR SCHEDULE ON SHEET A5.1
- WALL TYPE, SEE TYPES ON THIS SHEET
- ROOM NAME & NUMBER, SEE FINISH SCHEDULE, SHEET A5.1



DRAINAGE POND

WATER TO BE EXTENDED TO THE
END OF THE PROPERTY

200.00 ft

CURRENT SUBSTATION

PROPOSED
GENERATION
BUILDING

FUTURE
BUILDING
EXPANSION

COOLING UNITS,
TRANSFORMERS, AND
APPURTENANCES

244.69 ft

