



November 19, 2021

Ron Roberts  
Venezia Partners, LLC  
2406 Cypress Glen Drive, Suite 102  
Wesley Chapel, FL 33543

**RE: Arborist Review  
Talichet Phase 2 Property  
Pasco County, Florida**

Dear Mr. Roberts:

Horner Environmental Professionals, Inc. (HEP) visited the subject property on November 15, 2021 (Figures 1-5). The purpose of the site visit was to assess the health of specimen and historic trees as identified on the tree survey provided by Germana Engineering and Associates, LLC. All applicable trees were assessed in the field with diameter at breast height measurements (DBH) and health assessments. Health assessments focused on the current health of the tree and the risk it currently exhibits. Below is a summary of our findings with detail provided for each applicable lot:

**Candidates for Removal**

- 36" Oak (East of Lot 96): Significant cojoining, included bark.**
- 20" Oak (northeast of Lot 102): Bark inclusions, minor cavities.**
- 27" Oak (lot 105): Severe conjoining.**
- 34" Oak (Lot 108): Significant inclusions, cavities.**
- 30" Oak (west of Lot 109): Significant inclusions, minor cavities.**
- 38" Oak (Lot 111): Bark inclusion, minor cavities.**

These trees can be found on the attached Tree Removal Plan.

Note that health and risk assessments take into consideration both the current conditions and use of the property as well as the proposed future use. The species and age of the tree is also considered. We maintained the same labeling as the survey and didn't differentiate between the species of oak. However, our inspection found a mix of mostly laurel oak (*Quercus laurifolia*) and live oak (*Quercus virginiana*) and multiple hybrids.

At this time, we would identify the above referenced trees as candidates for removal. We would specifically not recommend that these trees remain exist in close proximity to structures or common areas.

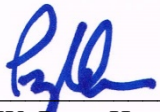
Also note that the survey references twenty 3" oaks in the extreme northeastern corner of Tract A. Upon inspection, this was found to be three 20" oaks.

This assessment is based on observations of existing conditions at the time of the site inspection. The opinions in this assessment are given based on observations made using generally accepted professional judgement.

HEP appreciates the opportunity to assist you with this project. Please don't hesitate to call if you need anything additional.

Sincerely,

**HORNER ENVIRONMENTAL PROFESSIONALS, INC.**



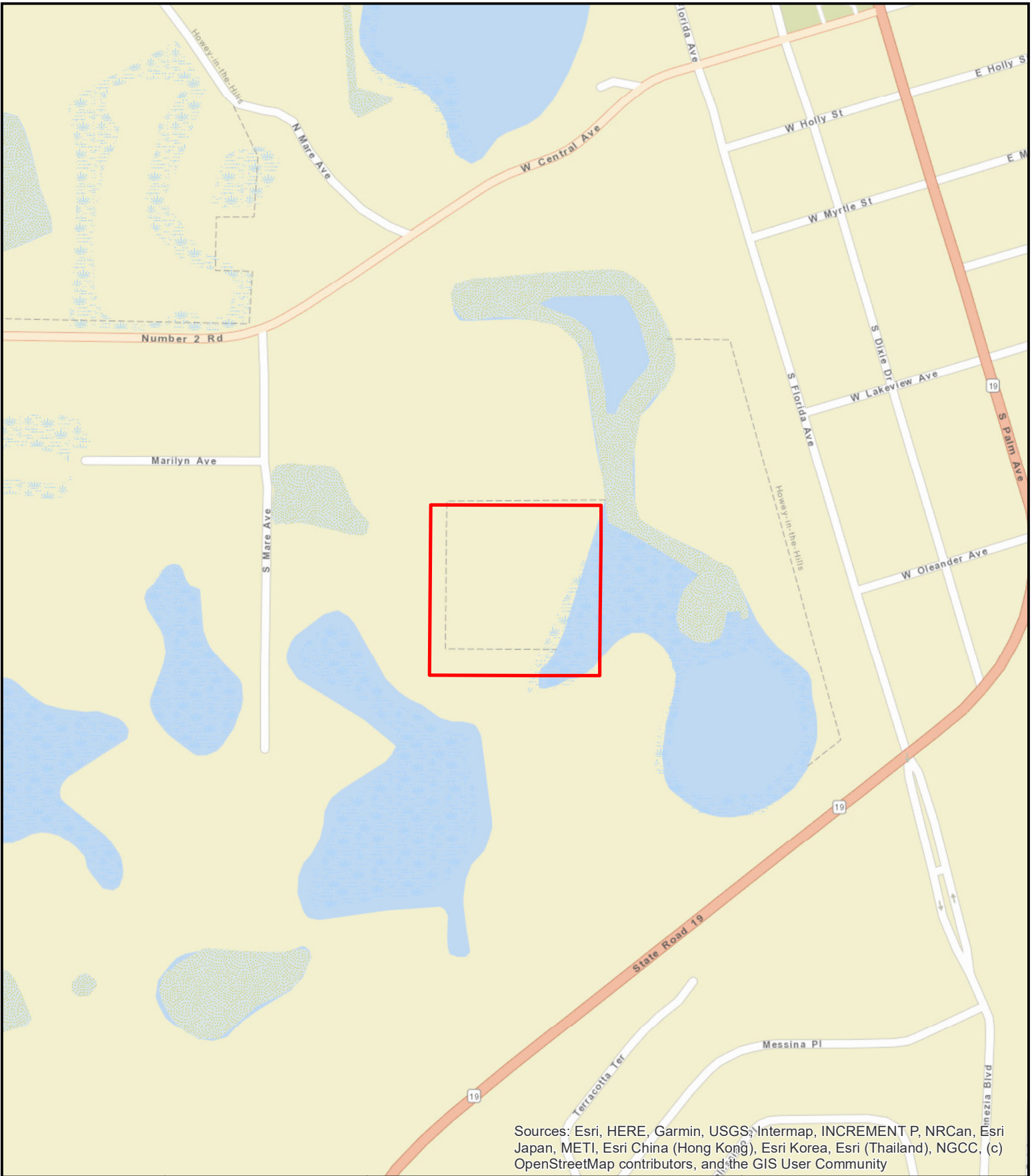
---

W. Perry Horner  
President

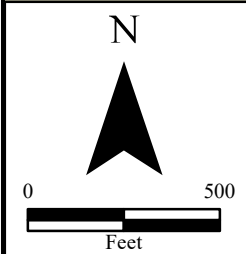


---

Tom Kimsey  
Arborist #710967A



Sources: Esri, HERE, Garmin, USGS, Intermap, INCREMENT P, NRCan, Esri Japan, METI, Esri China (Hong Kong), Esri Korea, Esri (Thailand), NGCC, (c) OpenStreetMap contributors, and the GIS User Community



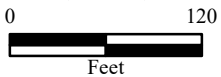
Date: 10/22/2021	Drawn by: CM
Source: ESRI	
Prepared for:	
File	

**Talichet Phase 2**  
 Figure 1: Location Map  
 Section 3, Township 24 South, Range 19 East  
 Lake County, Florida

**Horner Environmental Professionals**  
 4252 Hay Road  
 Lutz, Florida 33559  
 (813) 907-9500  
[hornerenvironmental.com](http://hornerenvironmental.com)



N



Date: 10/22/2021 Drawn by: CM

Source: LABINS

Prepared for:

File

## Talichet Phase 2

Figure 2: 2014 Aerial Photograph  
Section 3, Township 24 South, Range 19 East  
Lake County, Florida



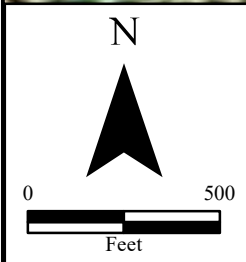
**Horner Environmental Professionals**

4252 Hay Road  
Lutz, Florida 33559  
(813) 907-9500

[hornerenvironmental.com](http://hornerenvironmental.com)



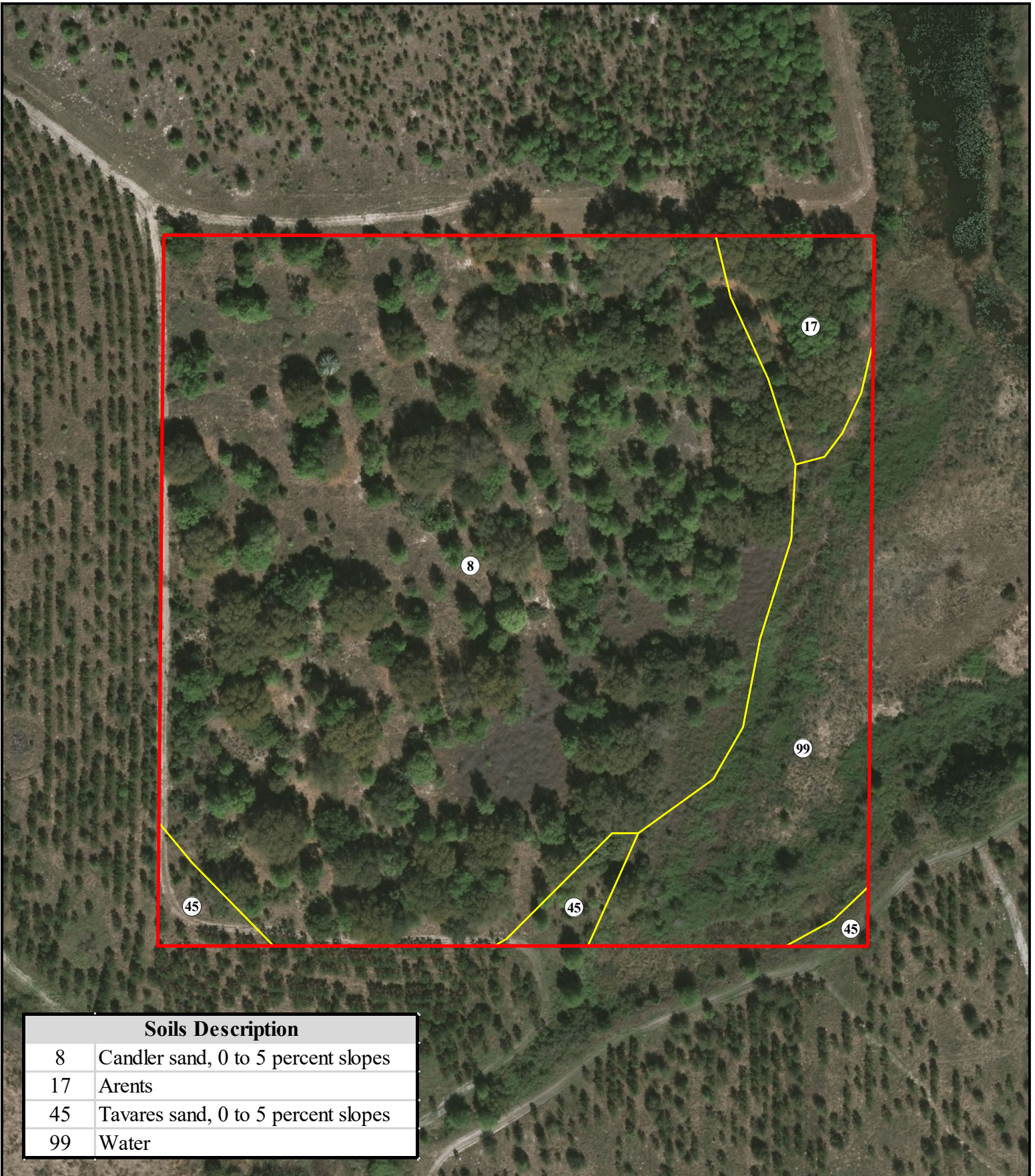
Copyright:© 2013 National Geographic Society, i-cubed



Date: 10/22/2021	Drawn by: CM
Source: ESRI	
Prepared for:	
File	

**Talichet Phase 2**  
 Figure 3: Quadrangle Map  
 Section 3, Township 24 South, Range 19 East  
 Lake County, Florida

**Horner Environmental Professionals**  
 4252 Hay Road  
 Lutz, Florida 33559  
 (813) 907-9500  
[hornerenvironmental.com](http://hornerenvironmental.com)



Soils Description	
8	Candler sand, 0 to 5 percent slopes
17	Arents
45	Tavares sand, 0 to 5 percent slopes
99	Water

N

0 120

Feet

Date: 10/22/2021	Drawn by: CM
Source: LABINS, WSS	
Prepared for:	
File	

**Talichet Phase 2**  
 Figure 4: Soils Map  
 Section 3, Township 24 South, Range 19 East  
 Lake County, Florida

**Horner Environmental Professionals**  
 4252 Hay Road  
 Lutz, Florida 33559  
 (813) 907-9500  
[hornerenvironmental.com](http://hornerenvironmental.com)

