

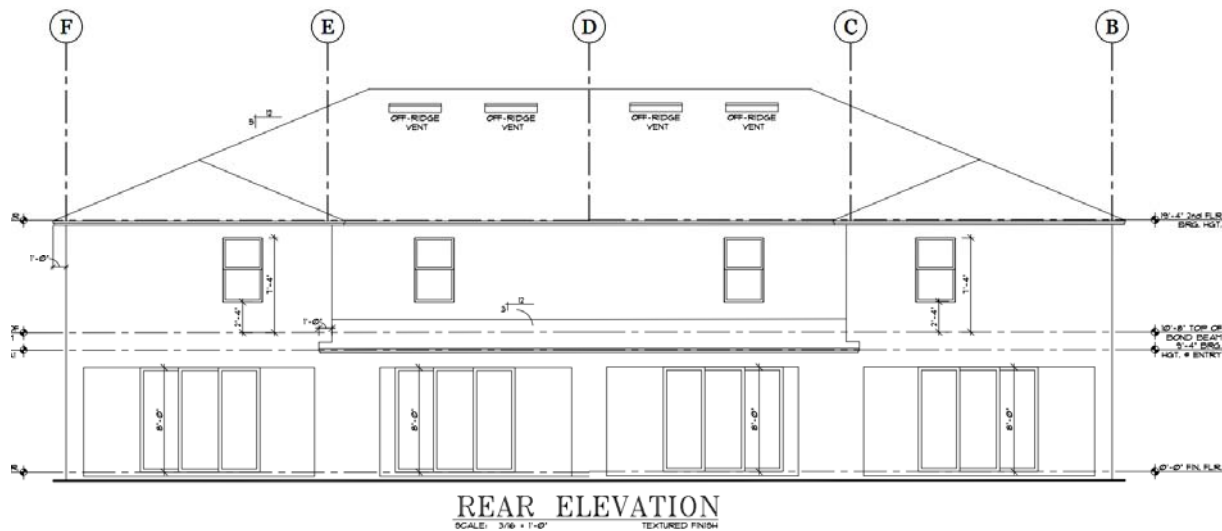
To the attention of the Town Council of Howey In The Hills

We have thoughtfully considered the suggestions of the advisory board regarding our Townhome product.

As a part of this submittal we have added a series of color schemes for our townhomes. These will be submitted to the Architectural Review Board to ensure our designs conform to the existing design standards of the HOA.

Concern was expressed regarding the dimensions of the rear of our buildings. A member of the board wanted to ensure that there would not be a simple flat surface visible from the street.

The rear of our Townhome product has a break in volume every 20ft of mass. The ground level has a covered lanai as depicted in the exhibit below.



# Venezia Townhomes

## Exterior Color Schemes

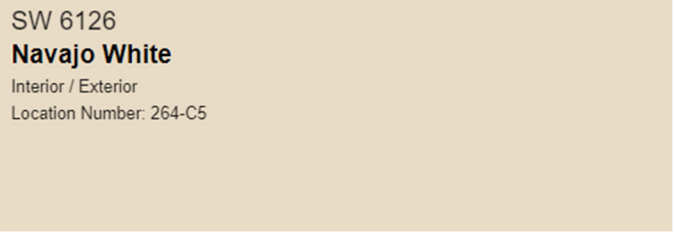
Actual color may vary from on-screen representation. To confirm color choices prior to purchase, please view a physical color chip, color card, or painted sample, per Sherwin-Williams.com.

### Scheme 1:



SW 6072  
**Versatile Gray**  
Interior / Exterior  
Location Number: 242-C2

Main Body: SW 6072 Versatile Gray



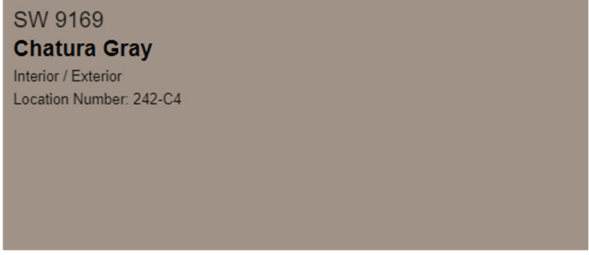
SW 6126  
**Navajo White**  
Interior / Exterior  
Location Number: 264-C5

Trim: SW 6126 Navajo White



Gray October  
SWVS 419

Doors/Shutters: SW VS 419 Gray October



SW 9169  
**Chatura Gray**  
Interior / Exterior  
Location Number: 242-C4

End Units  ONLY: SW 9169 Chatura Gray

Scheme 2:

SW 7689  
**Row House Tan**  
Interior / Exterior  
Location Number: 292-C2

Main Body: SW 7689 Row House Tan

SW 6126  
**Navajo White**  
Interior / Exterior  
Location Number: 264-C5

Trim: SW 6126 Navajo White

SW 6328  
**Fireweed**  
Interior / Exterior  
Location Number: 114-C7

Doors/Shutters: SW 6328 Fireweed

SW 7690  
**Townhall Tan**  
Interior / Exterior  
Location Number: 292-C5

End Units **ONLY**: SW 7690 Townhall Tan

Scheme 3:

SW 7732  
**Lemongrass**  
Interior  
Location Number: 297-C1

Main Body: SW 7732 Lemongrass

SW 6126  
**Navajo White**  
Interior / Exterior  
Location Number: 264-C5

Trim: SW 6126 Navajo White

SW 6258  
**Tricorn Black**  
Interior / Exterior  
Location Number: 251-C1

Doors/Shutters: SW 6258 TRICORN BLACK

SW 7736  
**Garden Sage**  
Interior / Exterior  
Location Number: 297-C2

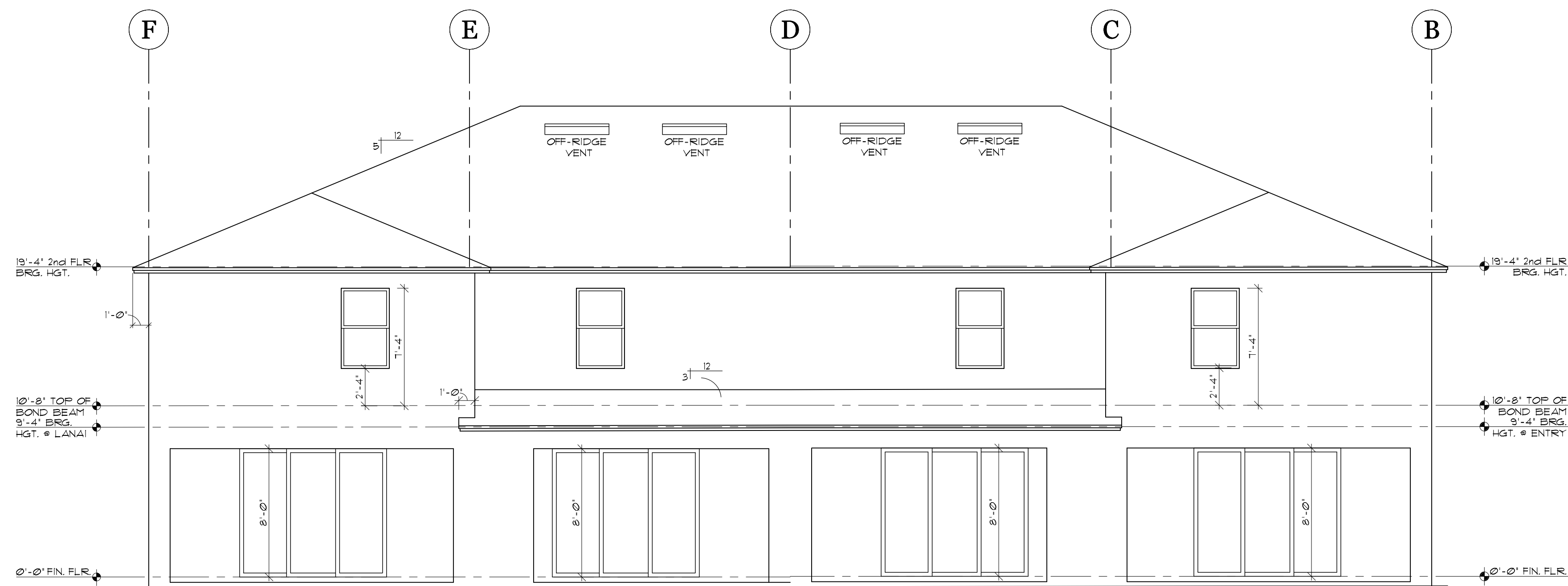
End Units **ONLY**: SW 7736 Garden Sage



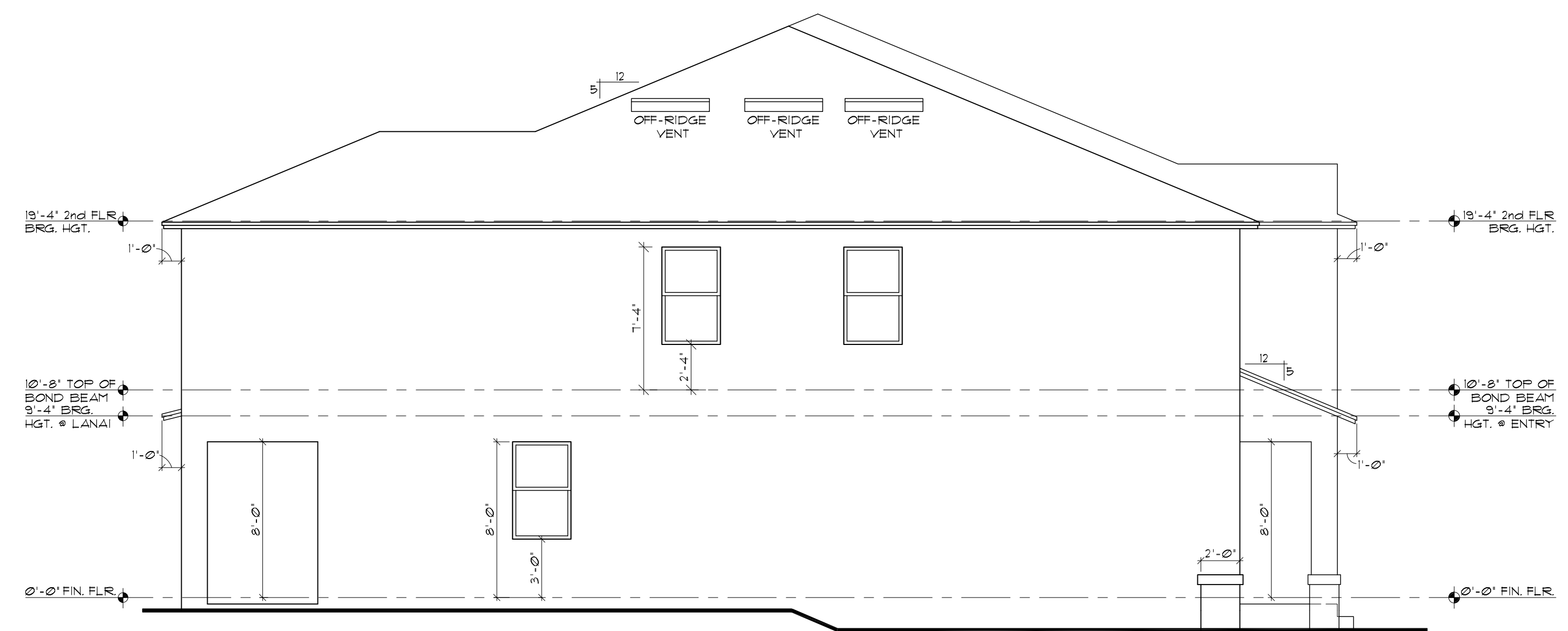
COLOR SCHEME A

**FRONT ELEVATION**  
 SCALE: 3/16" = 1'-0" TEXTURED FINISH  
 NOTE: WALL PENETRATION FLASHING AS PER FBCR 103.4

# 4 UNIT BLDG



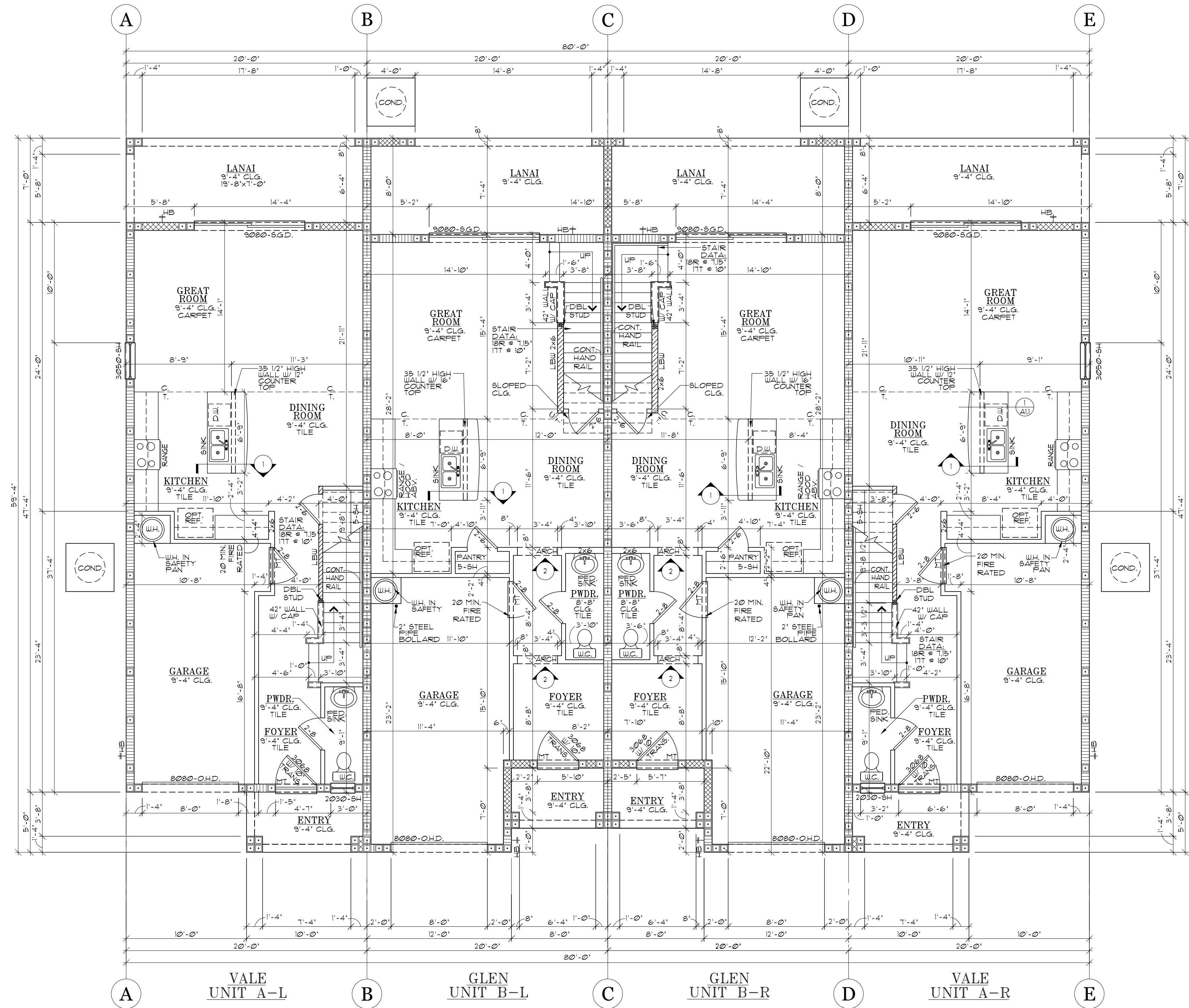
**REAR ELEVATION**  
 SCALE: 3/16" = 1'-0" TEXTURED FINISH



**LEFT ELEVATION**  
 SCALE: 3/16" = 1'-0" TEXTURED FINISH

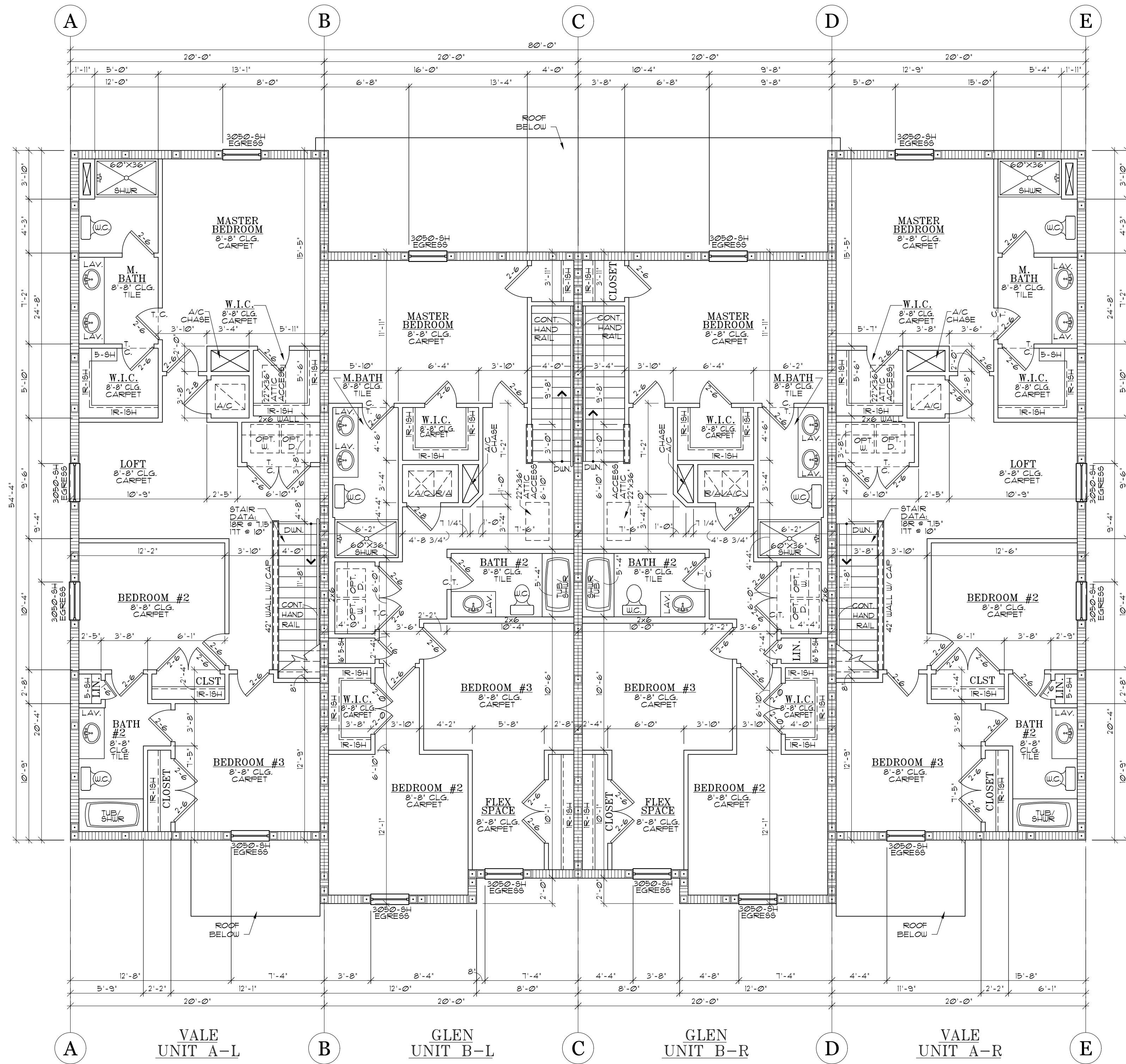
TYPICAL FOR ALL UNIT  
 COUNT BUILDINGS

# 4 UNIT BLDG FLOOR PLANS

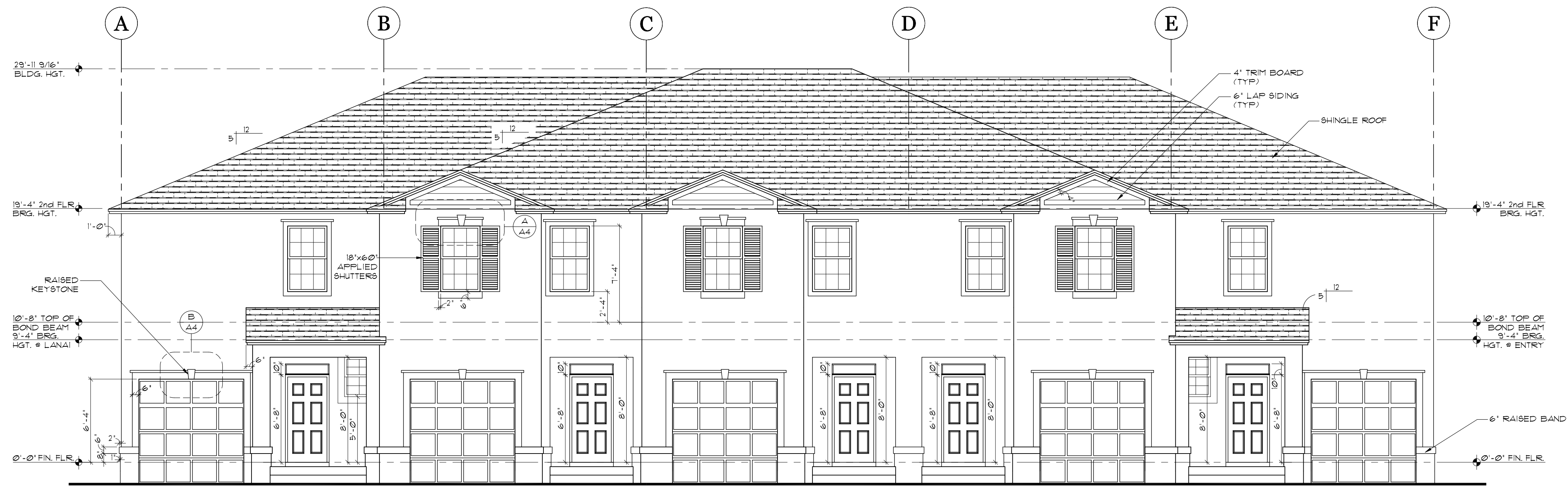


FIRST FLOOR PLAN

# 4 UNIT BLDG FLOOR PLANS

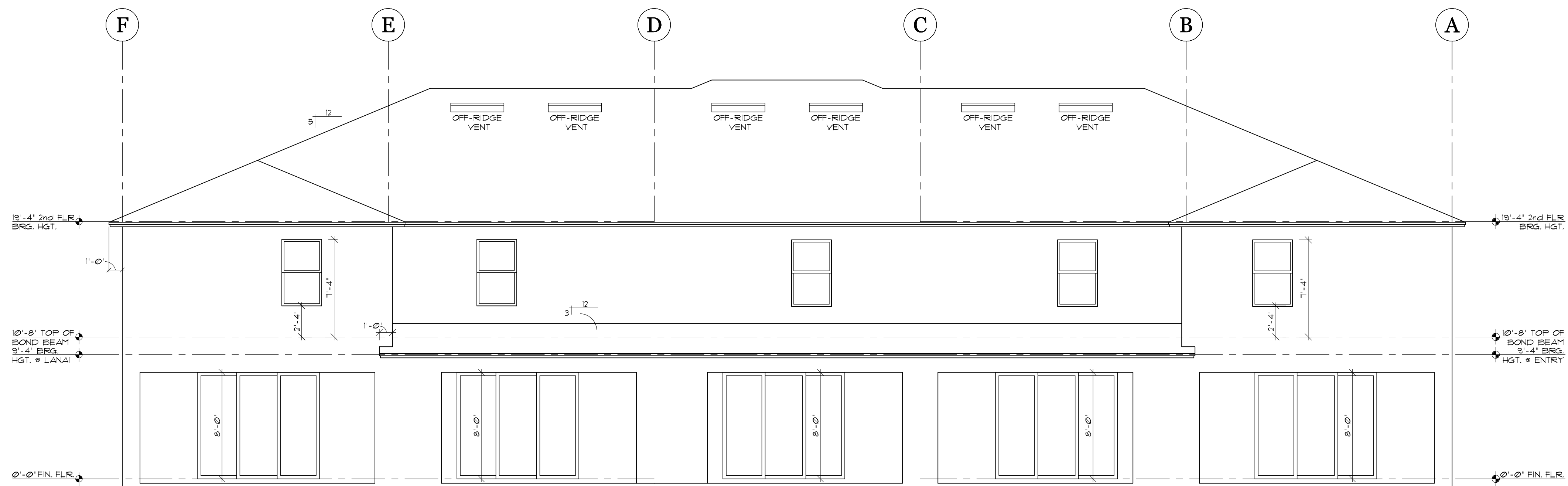


SECOND FLOOR PLAN



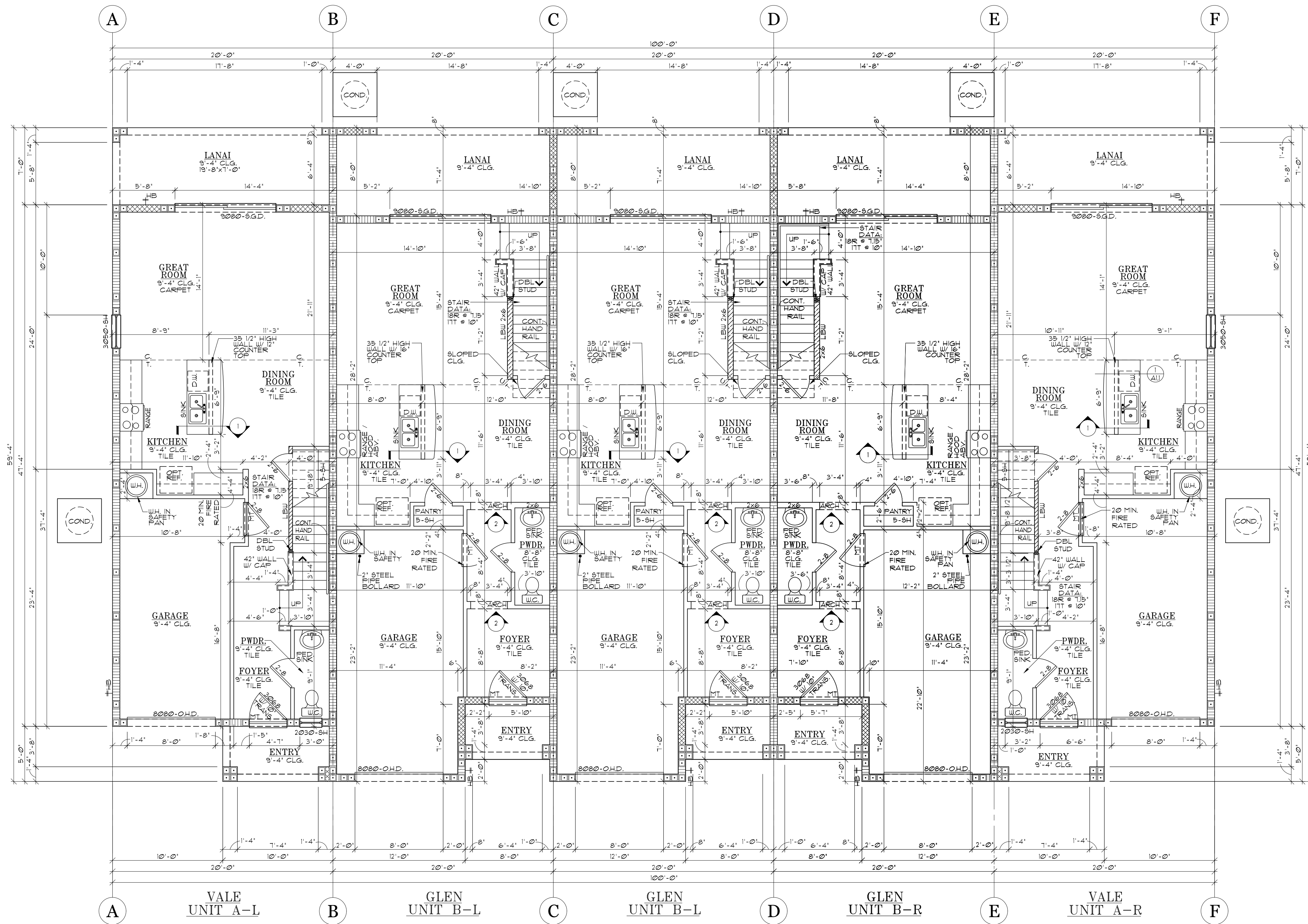
**FRONT ELEVATION**  
 SCALE: 3/16" = 1'-0" TEXTURED FINISH  
 NOTE: WALL PENETRATION FLASHING AS PER FBCR 103.4

# 5 UNIT BLDG

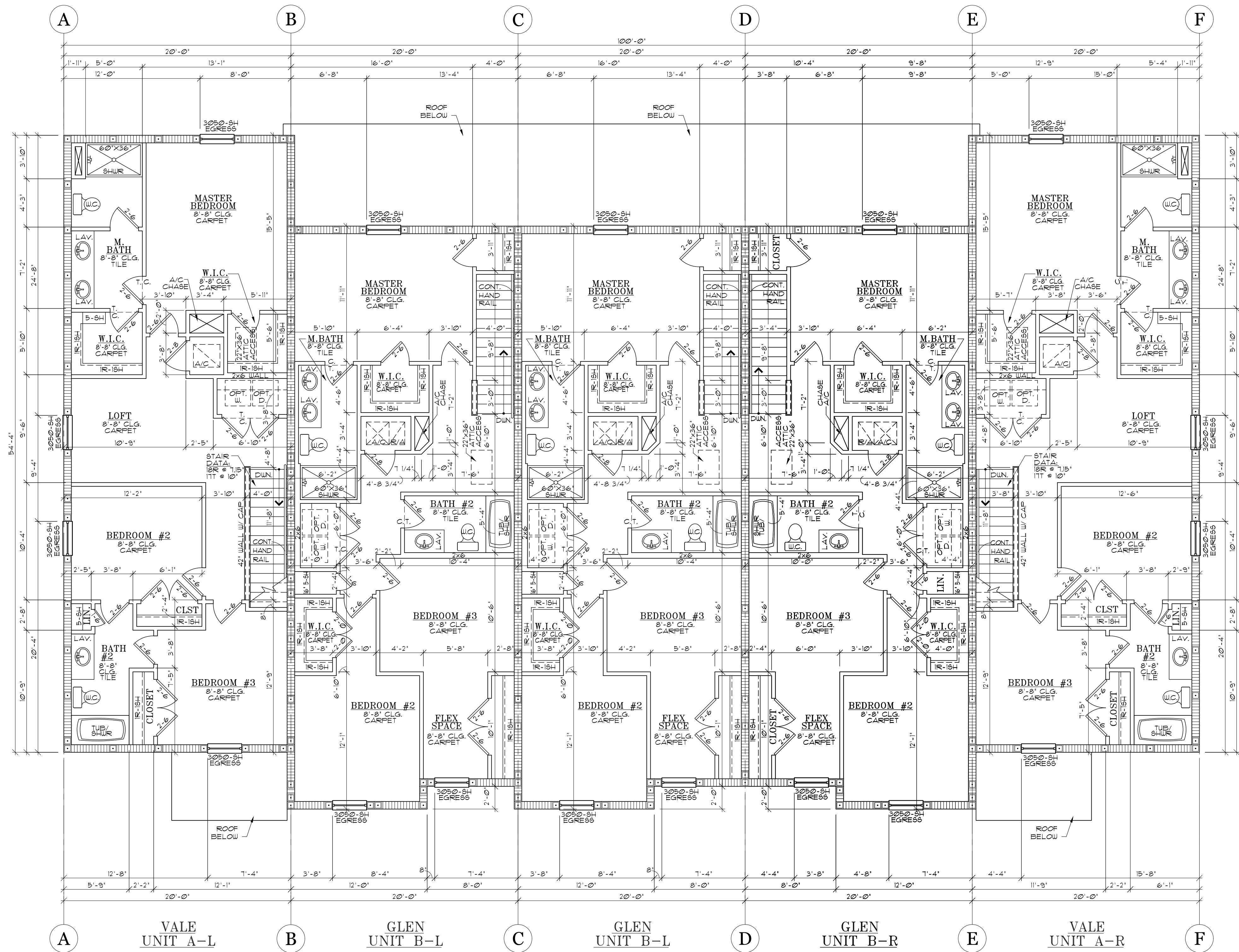


**REAR ELEVATION**  
 SCALE: 3/16" = 1'-0" TEXTURED FINISH





FIRST FLOOR PLAN

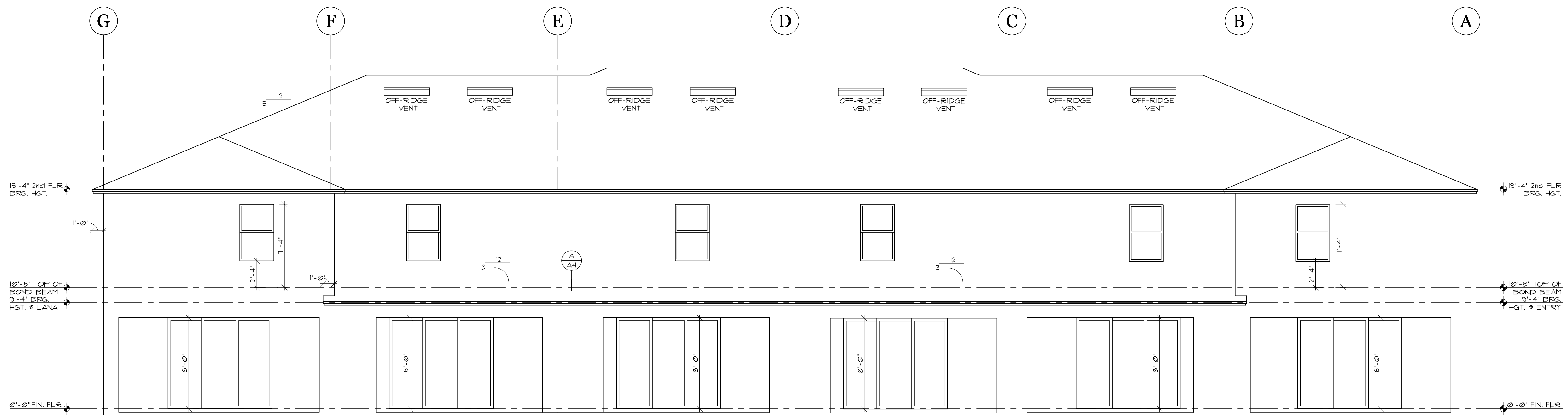


SECOND FLOOR PLAN



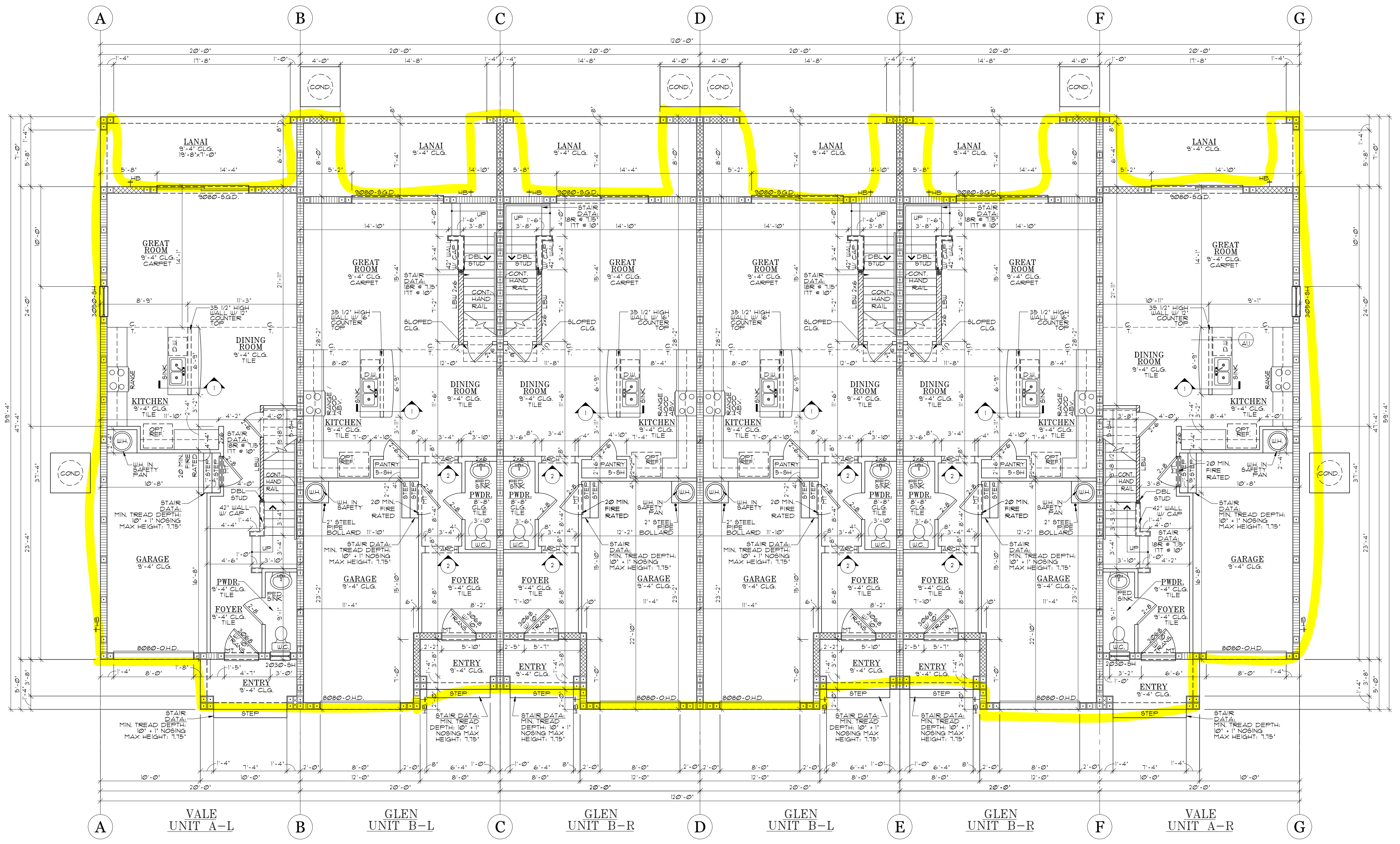
**FRONT ELEVATION**  
 SCALE: 3/16" = 1'-0" TEXTURED FINISH  
 NOTE: WALL PENETRATION FLASHING AS PER FBCR 103.4

# 6 UNIT BLDG



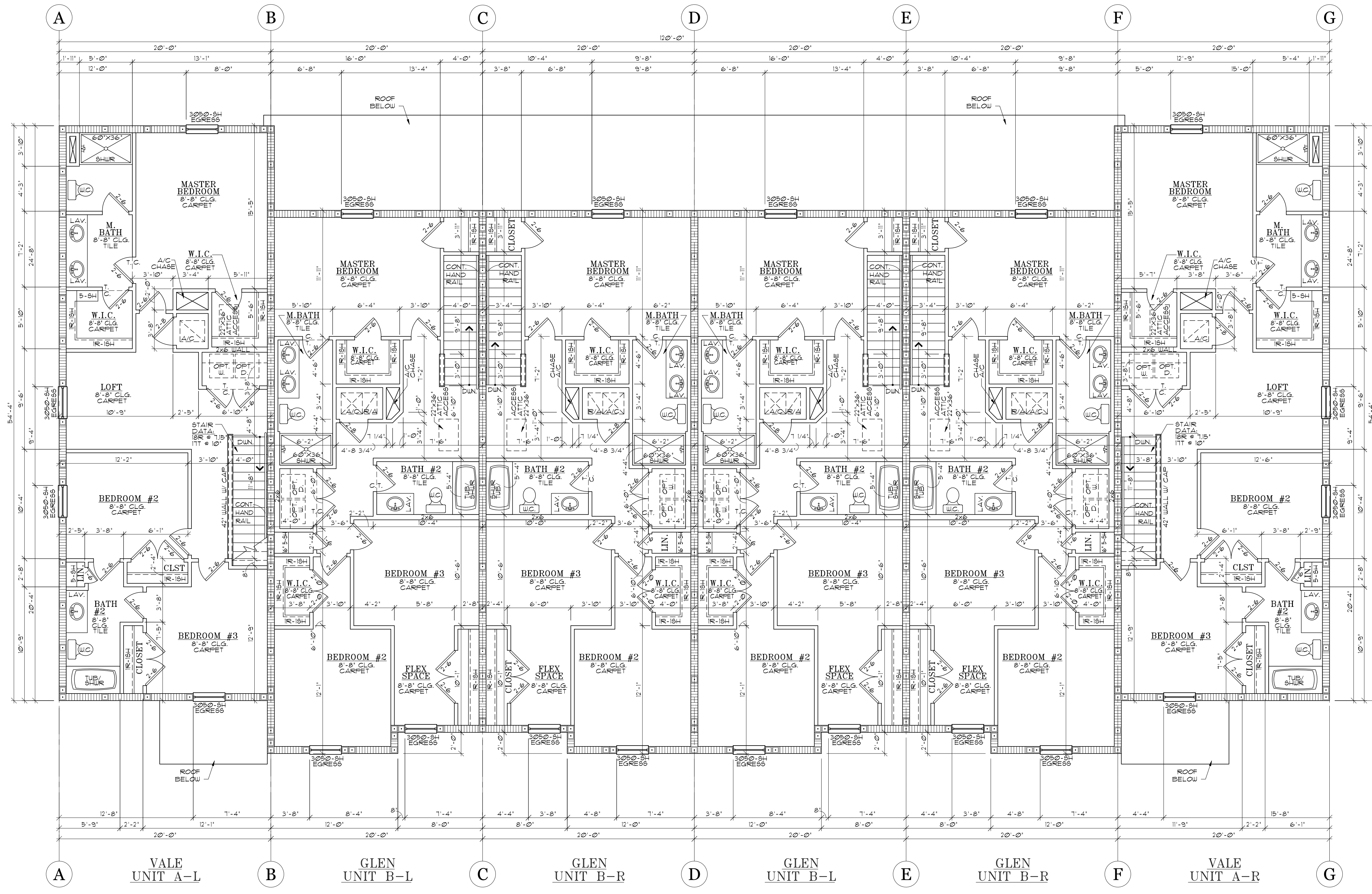
**REAR ELEVATION**  
 SCALE: 3/16" = 1'-0" TEXTURED FINISH  
 NOTE: WALL PENETRATION FLASHING AS PER FBCR 103.4





FIRST FLOOR PLAN





SECOND FLOOR PLAN



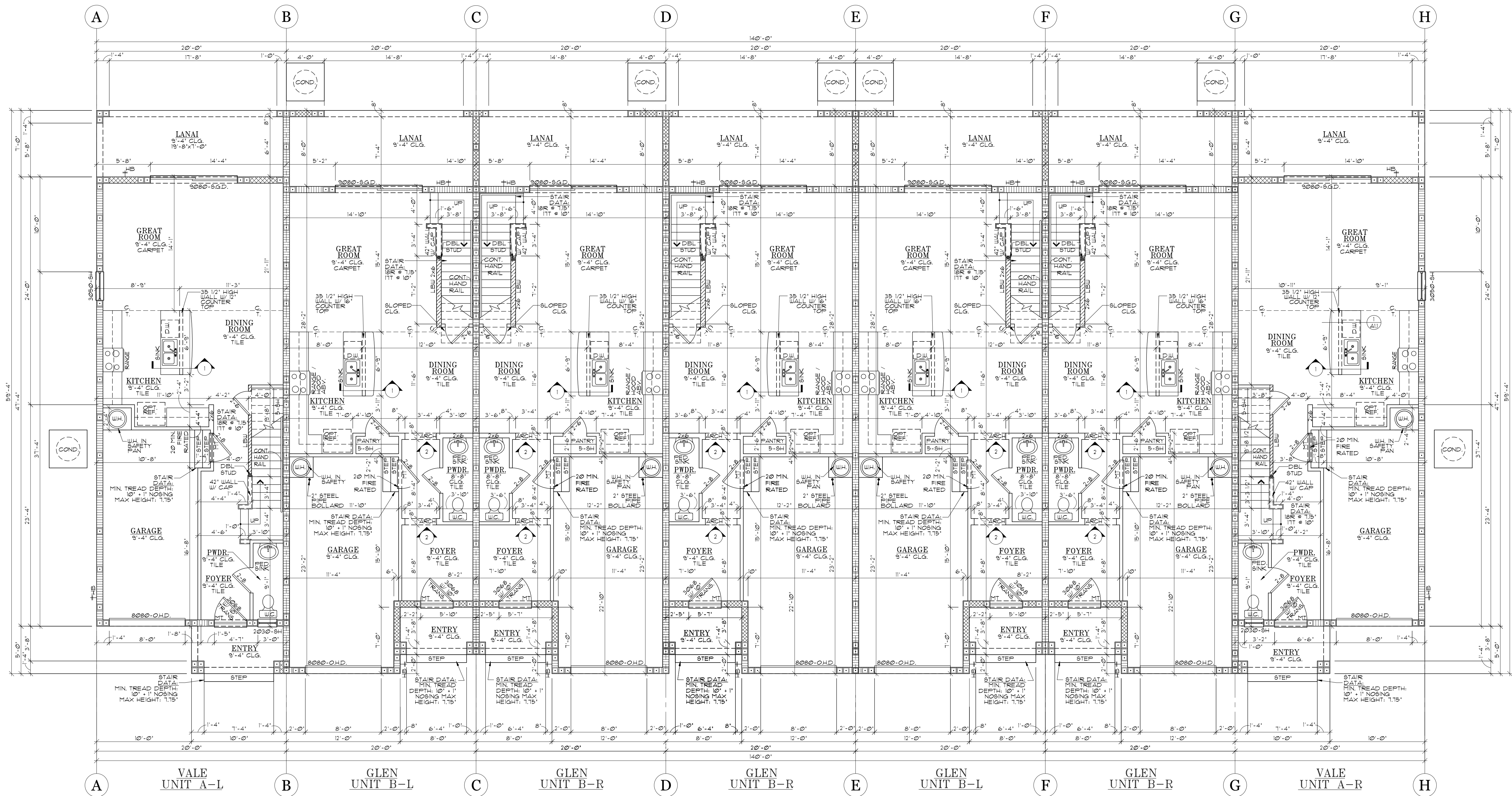
**FRONT ELEVATION**  
 SCALE: 3/16" = 1'-0" TEXTURED FINISH  
 NOTE: WALL PENETRATION FLASHING AS PER FBCR 103.4

**7 UNIT BLDG**

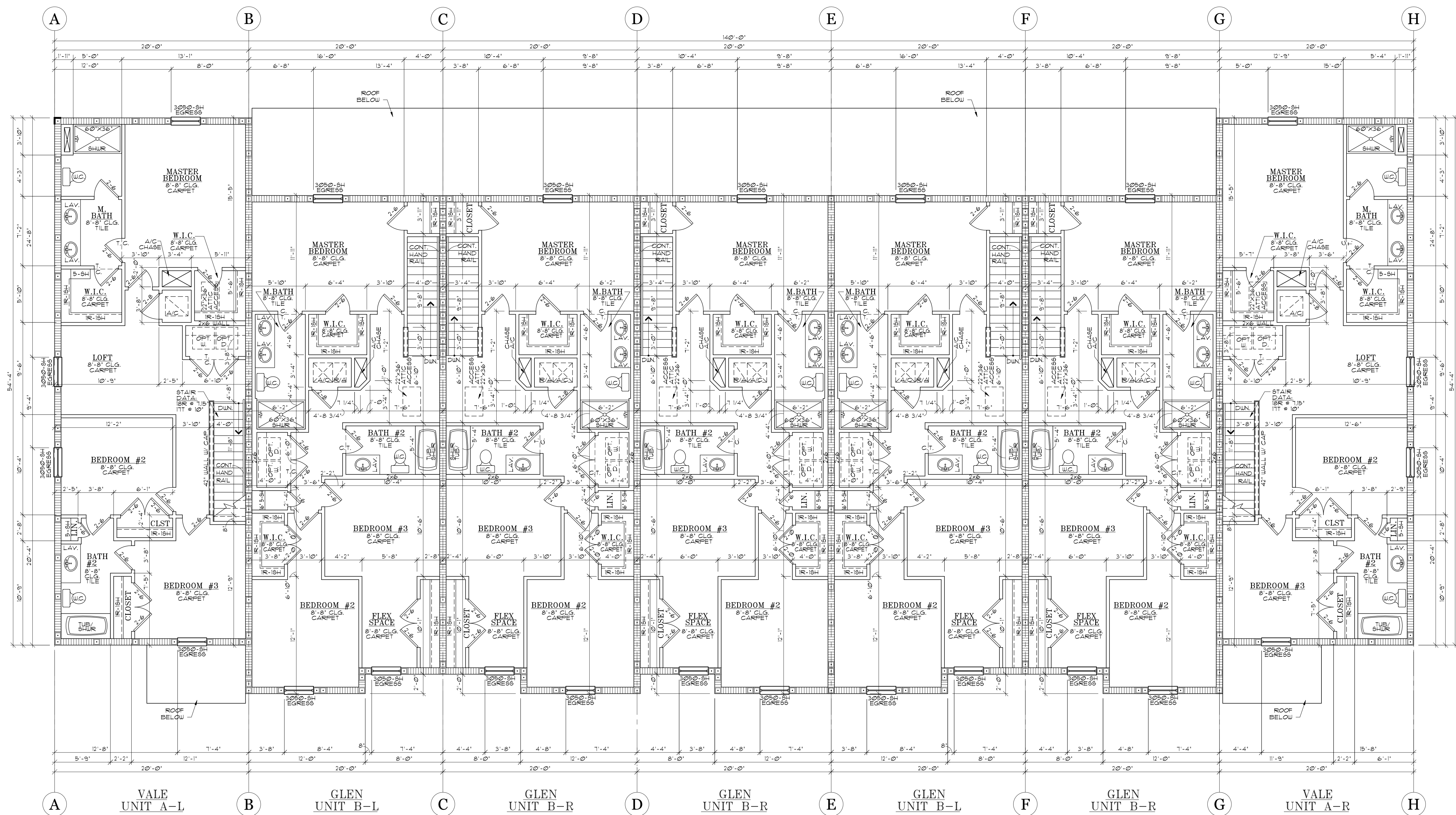


**REAR ELEVATION**  
 SCALE: 3/16" = 1'-0" TEXTURED FINISH





FIRST FLOOR PLAN



## SECOND FLOOR PLAN

COMPONENT AND CLADDING WIND LOADS





**FRONT ELEVATION (LEFT)**  
 SCALE: 3/16" = 1'-0" TEXTURED FINISH  
 NOTE: WALL PENETRATION FLASHING AS PER FBCR 103.4

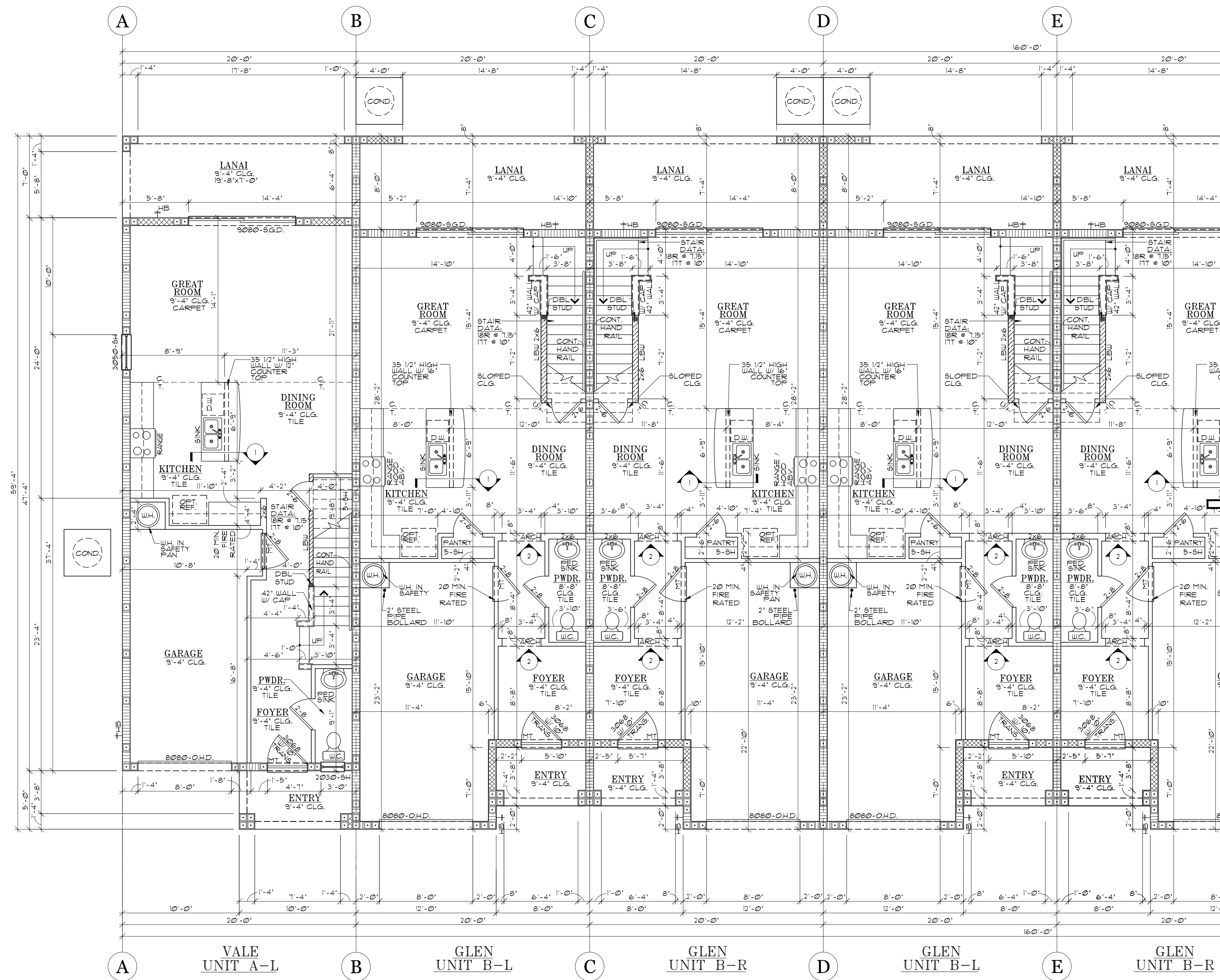
**FRONT ELEVATION (RIGHT)**  
 SCALE: 3/16" = 1'-0" TEXTURED FINISH  
 NOTE: WALL PENETRATION FLASHING AS PER FBCR 103.4

**8 UNIT BLDG**



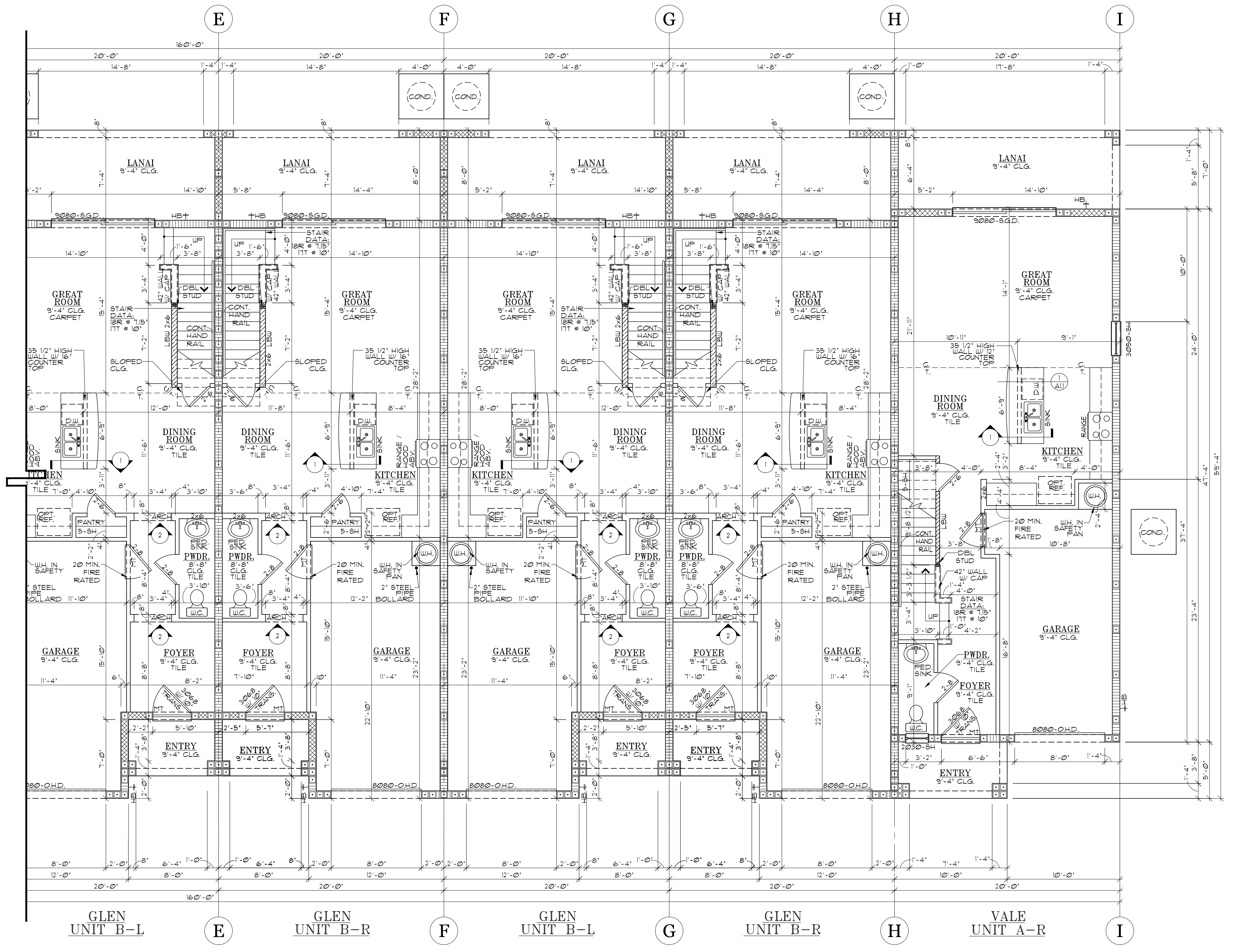
**REAR ELEVATION**  
 SCALE: 3/16" = 1'-0" TEXTURED FINISH

**REAR ELEVATION**  
 SCALE: 3/16" = 1'-0" TEXTURED FINISH



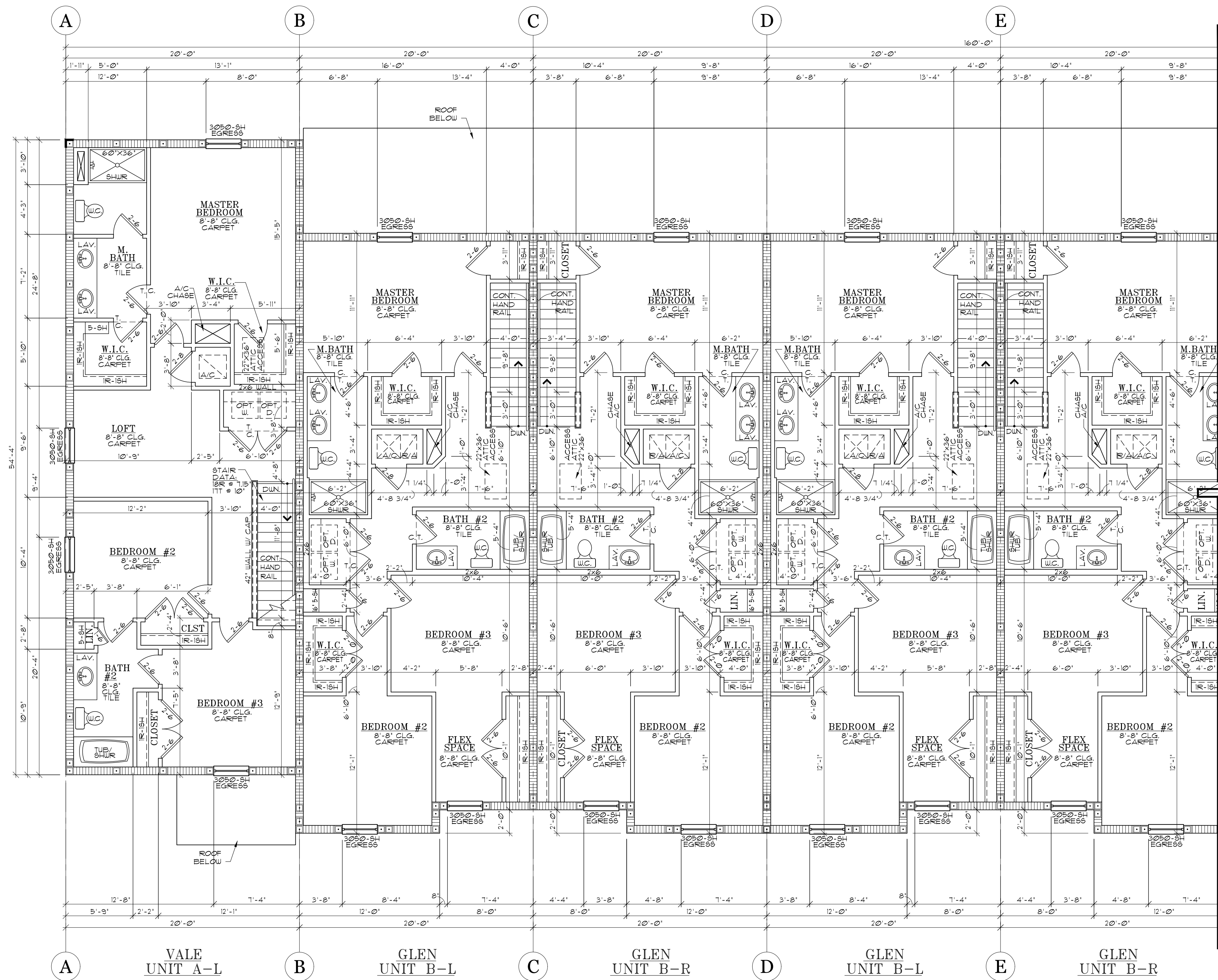
COMPONENT AND CLADDING WIND LOADS BASIC WIND EXPOSURE FOR 3 SECOND GUSTS			
OPENINGS AND TYPE	SQUARE FOOTAGE	ZONE	140 MPH WIND (W <sub>z</sub> )
REMARKS			

# FIRST FLOOR PLAN (LEFT)

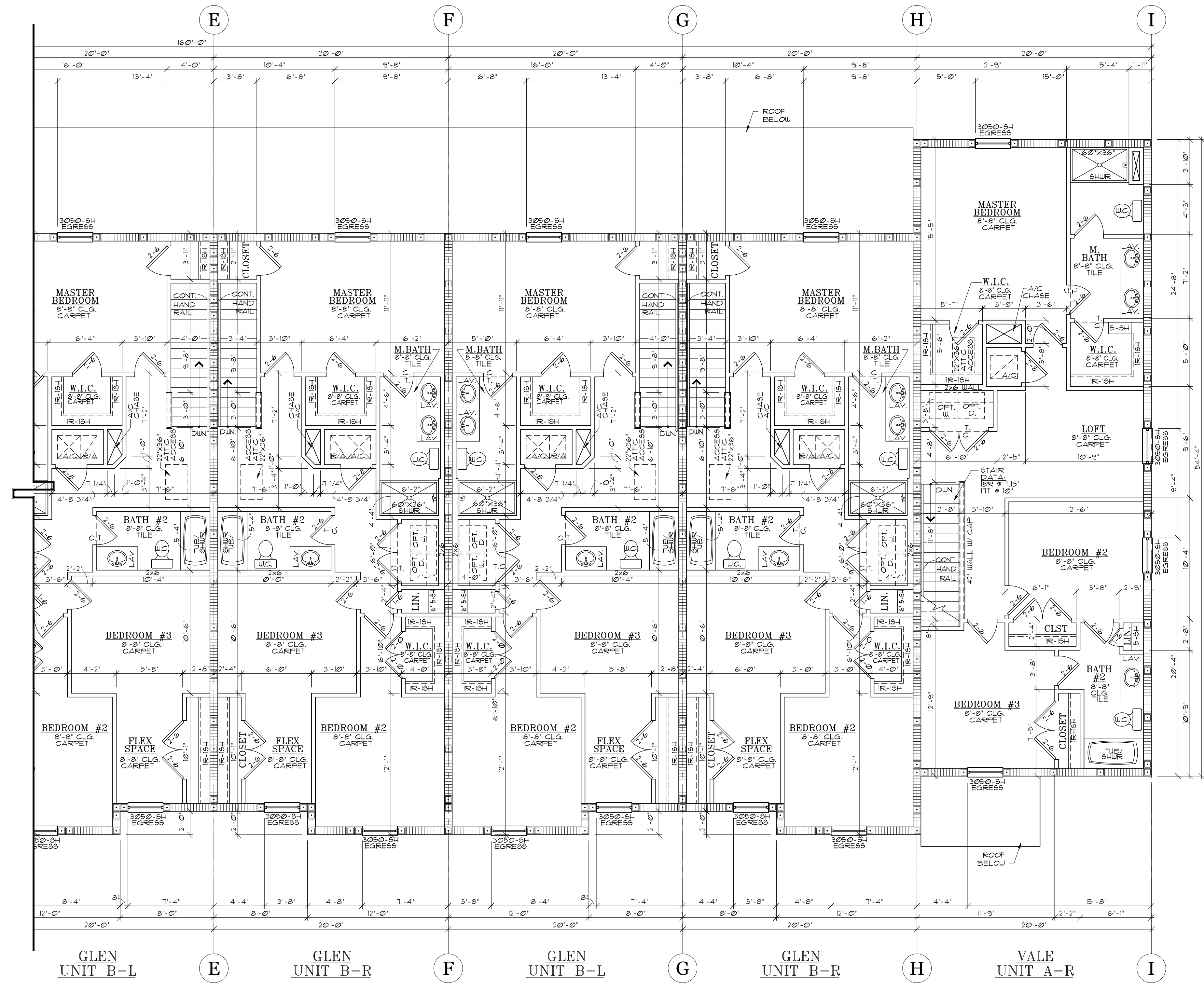


COMPONENT AND CLADDING WIND LOADS BASIC WIND EXPOSURE FOR 3 SECOND GUSTS				
OPENINGS AND TYPE	SQUARE FOOTAGE	ZONE	140 MPH WIND (V <sub>W</sub> )	REMARKS

# FIRST FLOOR PLAN (RIGHT)



SECOND FLOOR PLAN (LEFT)



SECOND FLOOR PLAN (RIGHT)