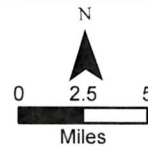


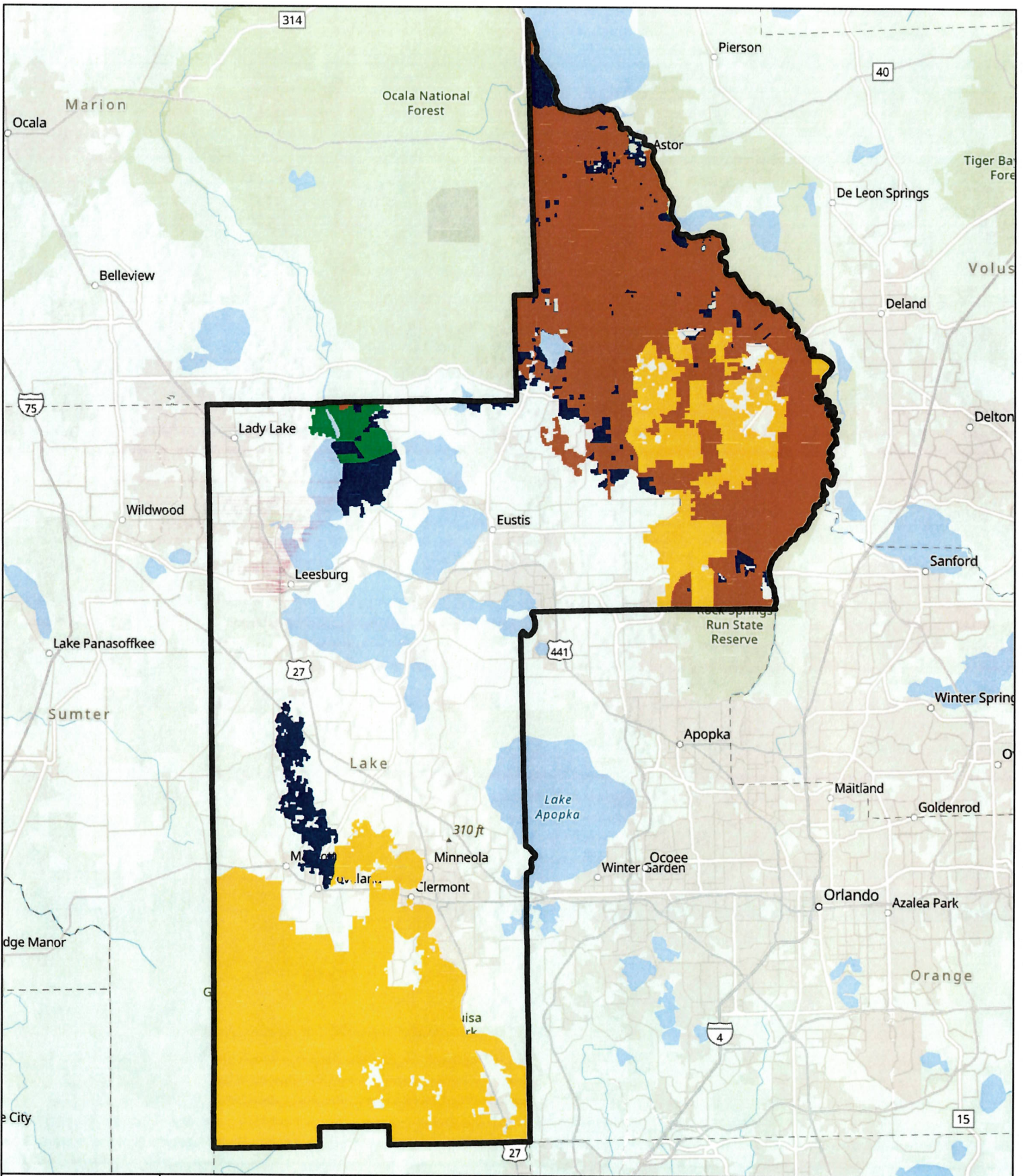
**Lake County  
FNAI  
Assessment**

**Functional  
Wetlands**  
Priority 1 -  
HIGHEST

- Priority 2
- Priority 3
- Priority 4
- Priority 5
- Priority 6
- Lake County Boundary




This map is intended to be used for planning purposes only and is not to be construed as a legal document. The GIS data available on this map may need field verification as it corresponds to regional scale representation. 186.803 Use of geographic information by governmental entities.--When state agencies, water management districts, regional planning councils, local governments, and other governmental entities use maps, including geographic information maps and other graphic information materials, as the source of data for planning or any other purposes, they must take into account that the accuracy and reliability of such maps and data may be limited by various factors, including the scale of the maps, the timeliness and accuracy of the underlying information, the availability of more accurate and the presence or absence of ground truthing or peer review of the underlying information contained in such maps and other graphic information. All Data created and/or reviewed by the ECFRPC.




**Lake County  
FNAI  
Assessment**

**Florida Ecological  
Greenway Network**

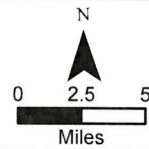
 Priority 1 - Critical Linkages

 Priority 2

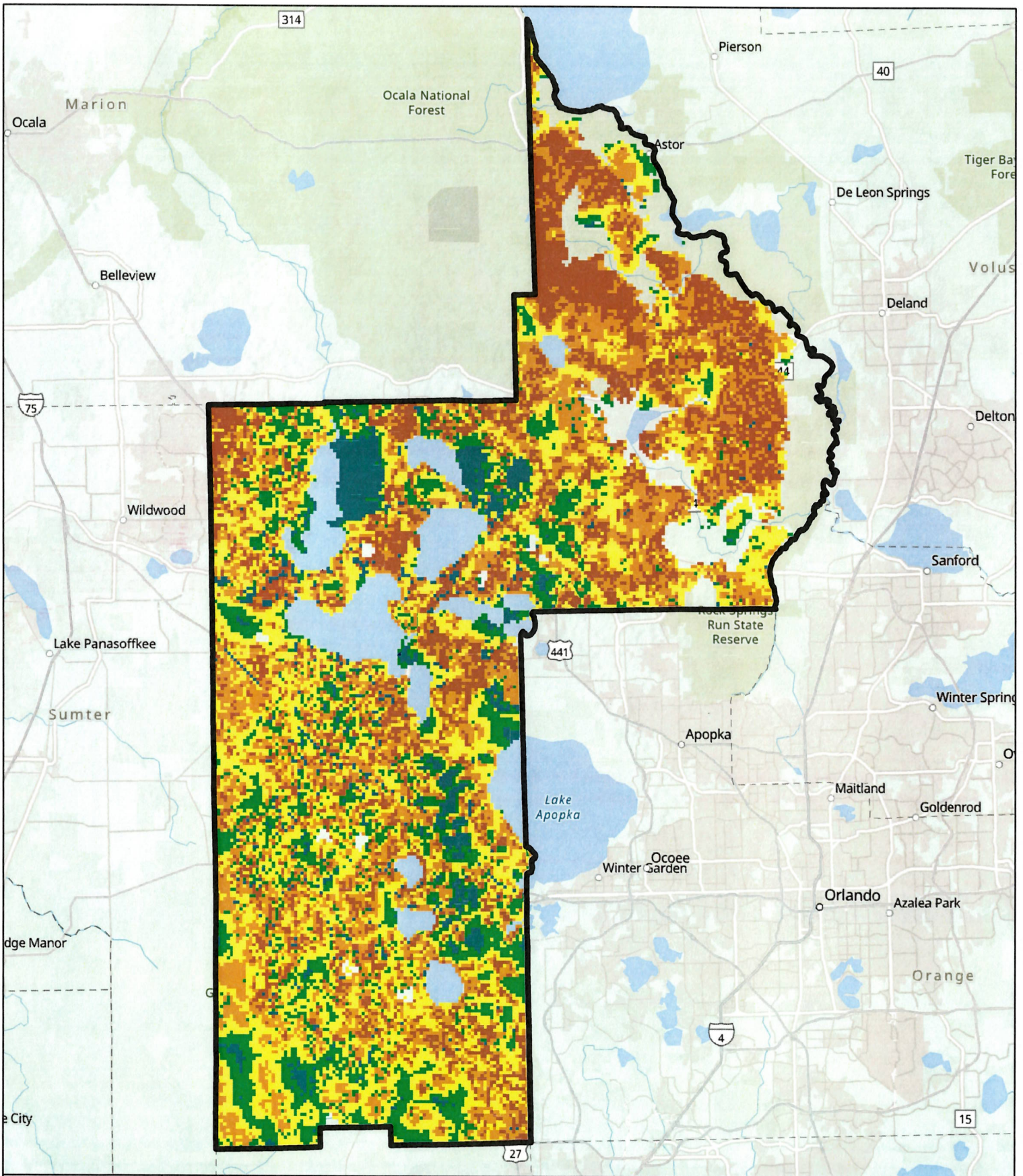
 Priority 4

 Priority 5

 Lake County Boundary



This map is intended to be used for planning purposes only and is not to be construed as a legal document. The GIS data available on this map may need field verification as it corresponds to regional scale representation. 186.803 Use of geographic information by governmental entities.--When state agencies, water management districts, regional planning councils, local governments, and other governmental entities use maps, including geographic information maps and other graphic information materials, as the source of data for planning or any other purposes, they must take into account that the accuracy and reliability of such maps and data may be limited by various factors, including the scale of the maps, the timeliness and accuracy of the underlying information, the availability of more accurate and the presence or absence of ground truthing or peer review of the underlying information contained in such maps and other graphic information. All Data created and/or reviewed by the ECFRPC.

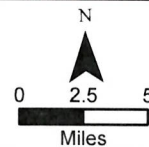


**Lake County  
FNAI  
Assessment**

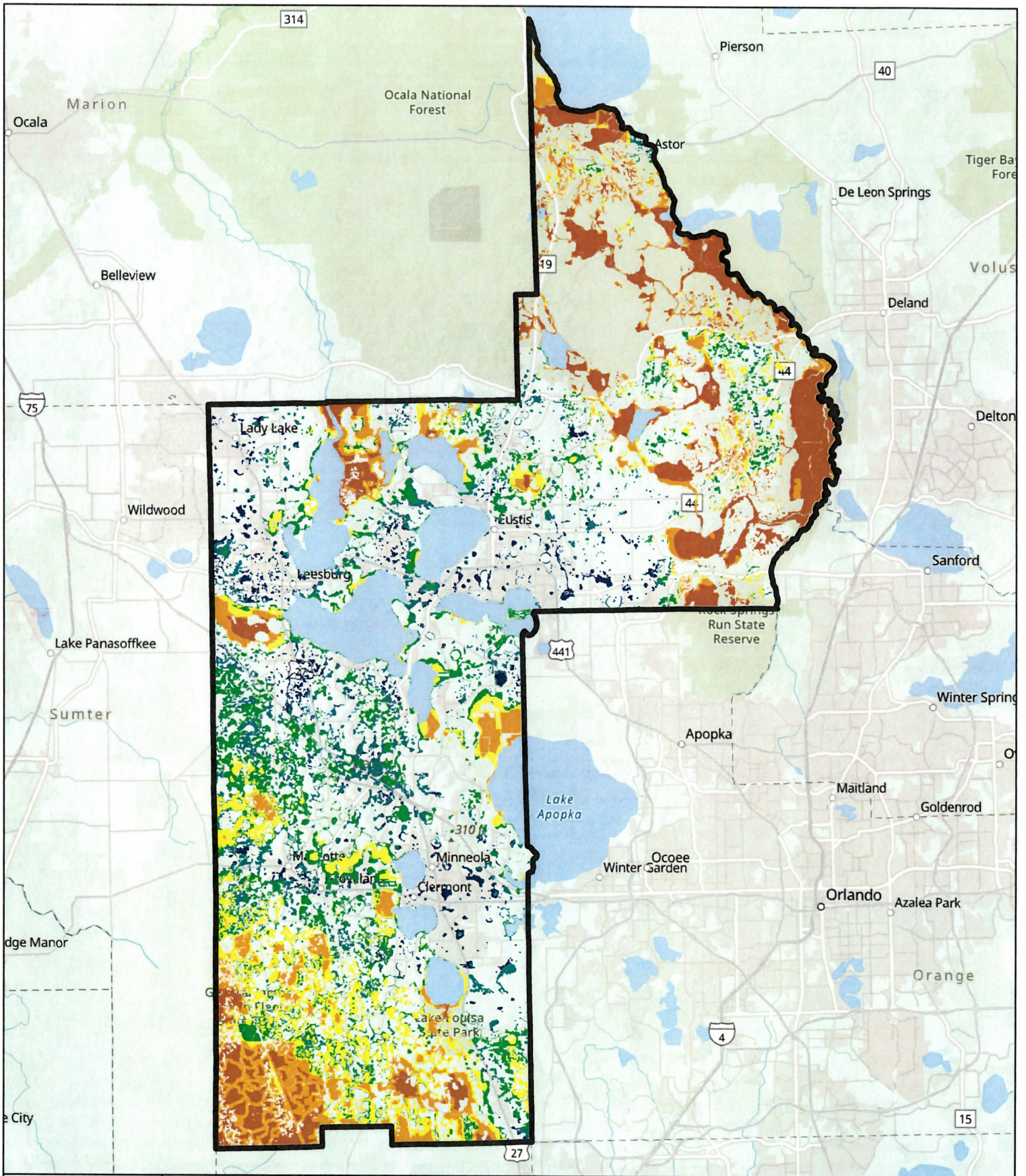
**Groundwater Recharge**

- Priority 1 - HIGHEST
- Priority 2
- Priority 3

- Priority 4
- Priority 5
- Priority 6
- Lake County Boundary

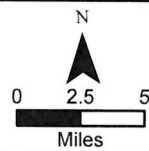


This map is intended to be used for planning purposes only and is not to be construed as a legal document. The GIS data available on this map may need field verification as it corresponds to regional scale representation, 186,803. Use of geographic information by governmental entities.--When state agencies, water management districts, regional planning councils, local governments, and other governmental entities use maps, including geographic information maps and other graphic information materials, as the source of data for planning or any other purposes, they must take into account that the accuracy and reliability of such maps and data may be limited by various factors, including the scale of the maps, the timeliness and accuracy of the underlying information, the availability of more accurate and the presence or absence of ground truthing or peer review of the underlying information contained in such maps and other graphic information. All Data created and/or reviewed by the ECFRPC.

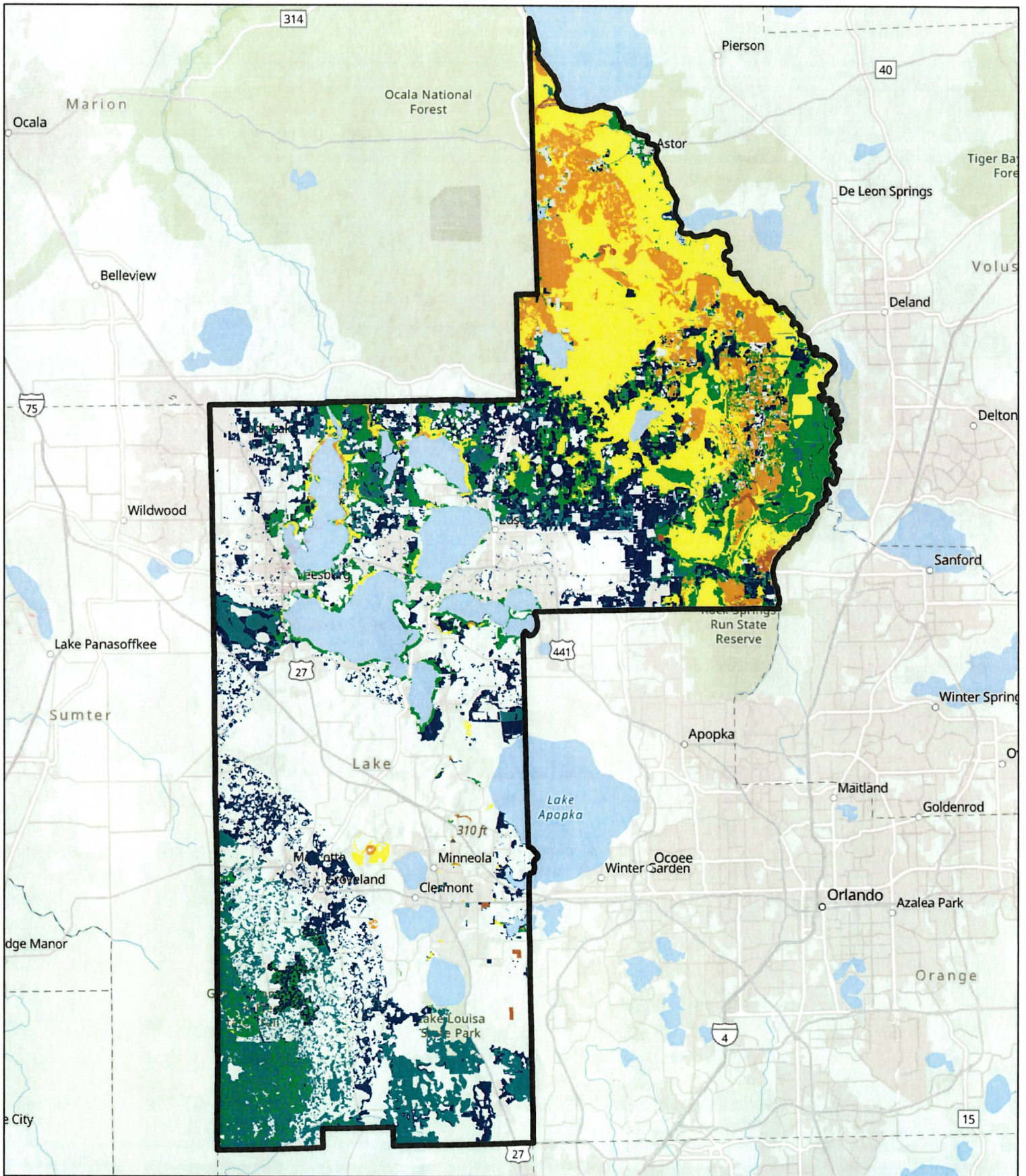


# Lake County FNAI Assessment

Natural Floodplain Function	
	Priority 1 - HIGHEST
	Priority 2
	Priority 3
	Priority 4
	Priority 5
	Priority 6
	Lake County Boundary



This map is intended to be used for planning purposes only and is not to be construed as a legal document. The GIS data available on this map may need field verification as it corresponds to regional scale representation. 186.803 Use of geographic information by governmental entities.--When state agencies, water management districts, regional planning councils, local governments, and other governmental entities use maps, including geographic information maps and other graphic information materials, as the source of data for planning or any other purposes, they must take into account that the accuracy and reliability of such maps and data may be limited by various factors, including the scale of the maps, the timeliness and accuracy of the underlying information, the availability of more accurate and the presence or absence of ground truthing or peer review of the underlying information contained in such maps and other graphic information. All Data created and/or reviewed by the ECFRPC.

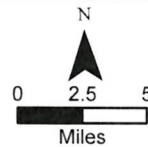


# Lake County FNAI Assessment

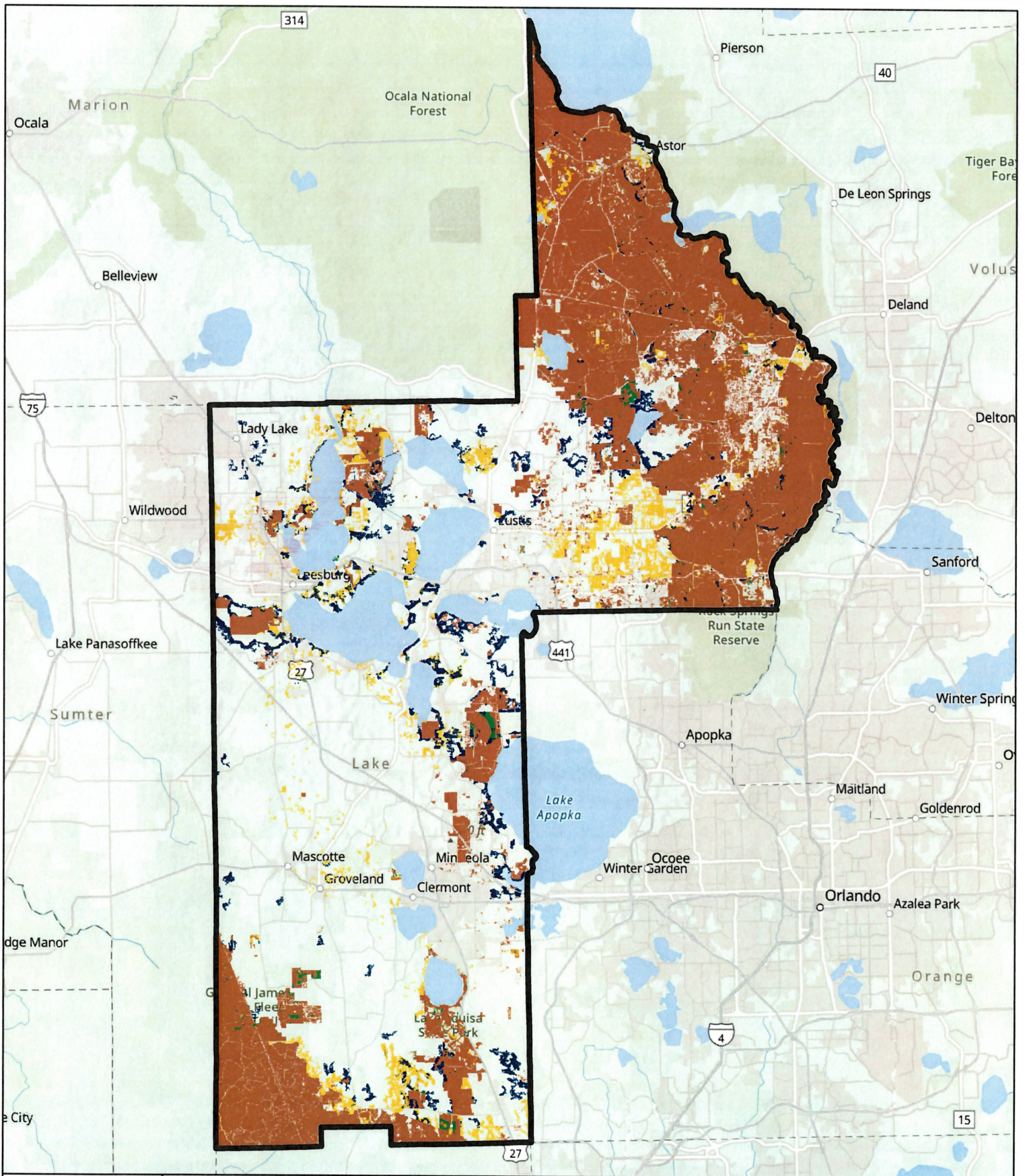
## Rare Species Habitat Conservation Priorities

- Priority 1 - HIGHEST
- Priority 2

- Priority 3
- Priority 4
- Priority 5
- Priority 6
- Lake County Boundary



This map is intended to be used for planning purposes only and is not to be construed as a legal document. The GIS data available on this map may need field verification as it corresponds to regional scale representation. 186.803 Use of geographic information by governmental entities--When state agencies, water management districts, regional planning councils, local governments, and other governmental entities use maps, including geographic information maps and other graphic information materials, as the source of data for planning or any other purposes, they must take into account that the accuracy and reliability of such maps and data may be limited by various factors, including the scale of the maps, the timeliness and accuracy of the underlying information, the availability of more accurate and the presence or absence of ground truthing or peer review of the underlying information contained in such maps and other graphic information. All Data created and/or reviewed by the ECFRPC.



# Lake County FNAI Assessment

Strategic Habitat Conservation Areas

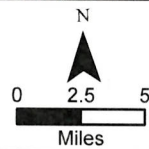
Priority 2

Priority 3

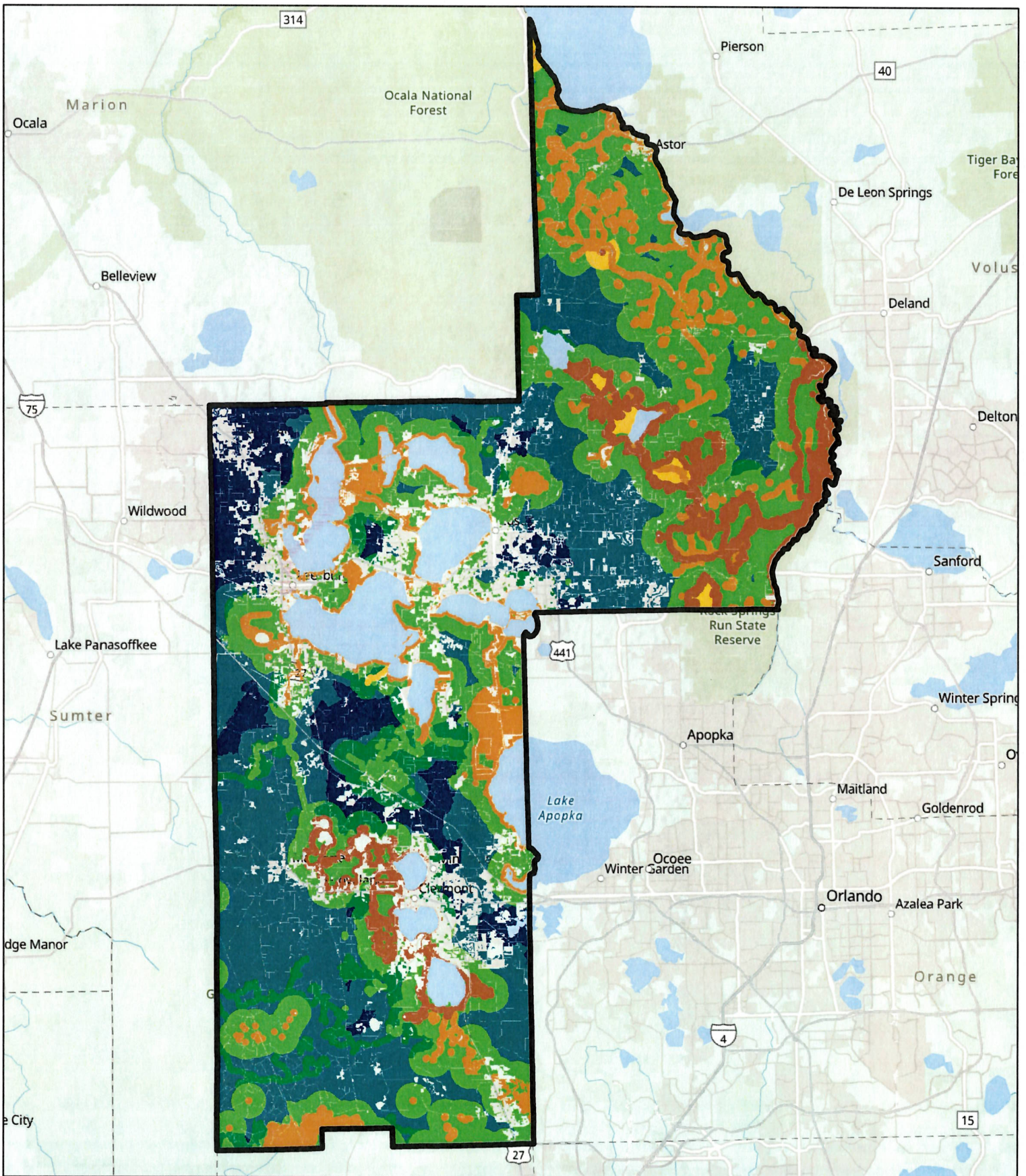
Priority 4

Priority 5

Lake County Boundary



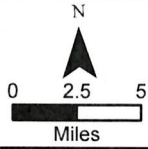
This map is intended to be used for planning purposes only and is not to be construed as a legal document. The GIS data available on this map may need field verification as it corresponds to regional scale representation. 186.803 Use of geographic information by governmental entities.--When state agencies, water management districts, regional planning councils, local governments, and other governmental entities use maps, including geographic information maps and other graphic information materials, as the source of data for planning or any other purposes, they must take into account that the accuracy and reliability of such maps and data may be limited by various factors, including the scale of the maps, the timeliness and accuracy of the underlying information, the availability of more accurate and the presence or absence of ground truthing or peer review of the underlying information contained in such maps and other graphic information. All Data created and/or reviewed by the ECFRPC.



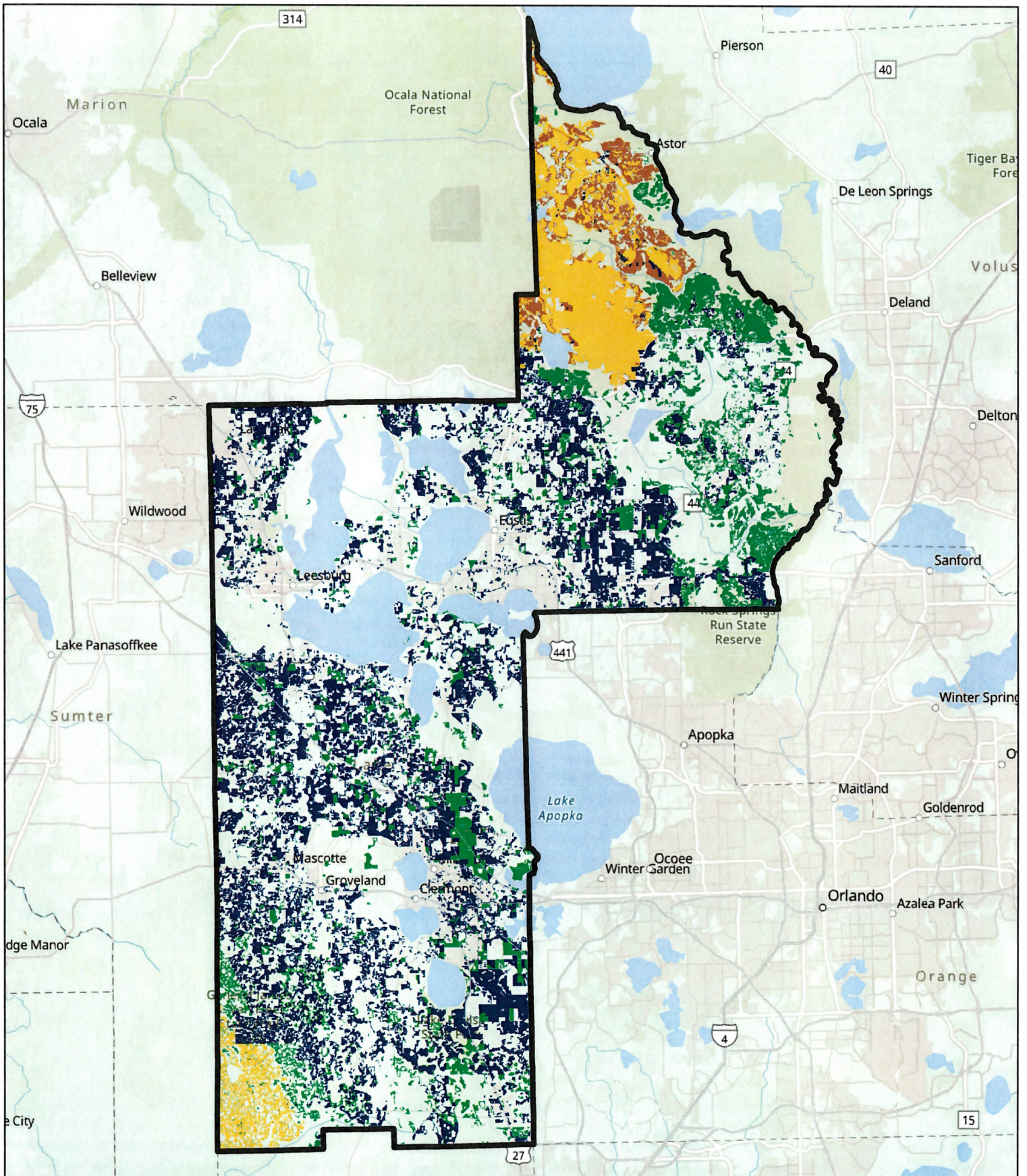
**Lake County  
FNAI  
Assessment**

**Surface Water  
Protection**

- Priority 2
- Priority 3
- Priority 4
- Priority 5
- Priority 6
- Priority 7
- Lake County Boundary
- Priority 1 - HIGHEST



This map is intended to be used for planning purposes only and is not to be construed as a legal document. The GIS data available on this map may need field verification as it corresponds to regional scale representation. 186.803 Use of geographic information by governmental entities.--When state agencies, water management districts, regional planning councils, local governments, and other governmental entities use maps, including geographic information maps and other graphic information materials, as the source of data for planning or any other purposes, they must take into account that the accuracy and reliability of such maps and data may be limited by various factors, including the scale of the maps, the timeliness and accuracy of the underlying information, the availability of more accurate and the presence or absence of ground truthing or peer review of the underlying information contained in such maps and other graphic information. All Data created and/or reviewed by the ECFRPC.

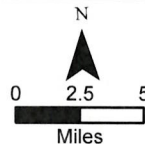


# Lake County FNAI Assessment

## Sustainable Forestry

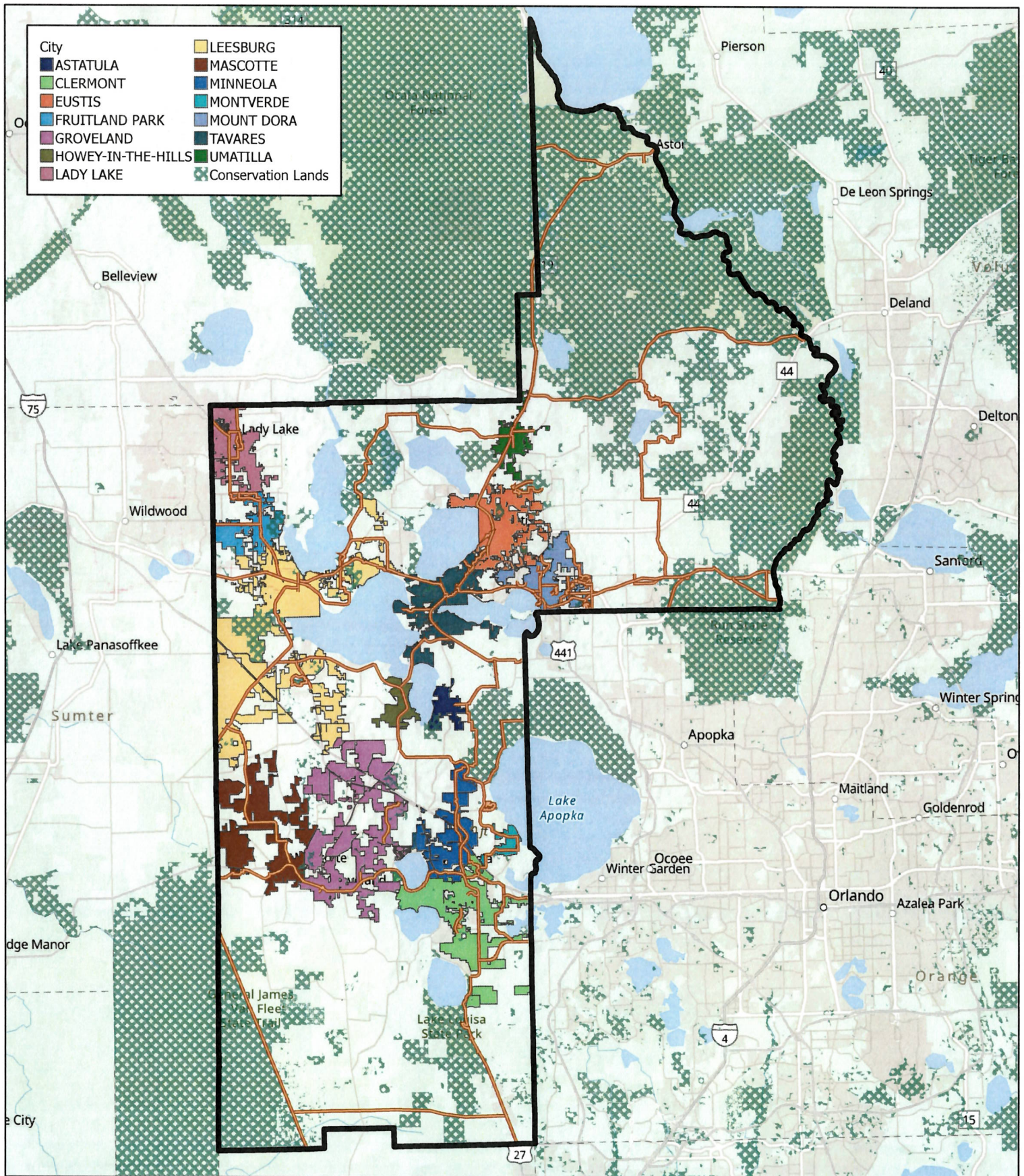
- Priority 1 - HIGHEST
- Priority 2

- Priority 3
- Priority 5
- Lake County Boundary






This map is intended to be used for planning purposes only and is not to be construed as a legal document. The GIS data available on this map may need field verification as it corresponds to regional scale representation. 186.803 Use of geographic information by governmental entities.--When state agencies, water management districts, regional planning councils, local governments, and other governmental entities use maps, including geographic information maps and other graphic information materials, as the source of data for planning or any other purposes, they must take into account that the accuracy and reliability of such maps and data may be limited by various factors, including the scale of the maps, the timeliness and accuracy of the underlying information, the availability of more accurate and the presence or absence of ground truthing or peer review of the underlying information contained in such maps and other graphic information. All Data created and/or reviewed by the ECFRPC.

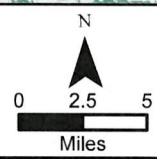




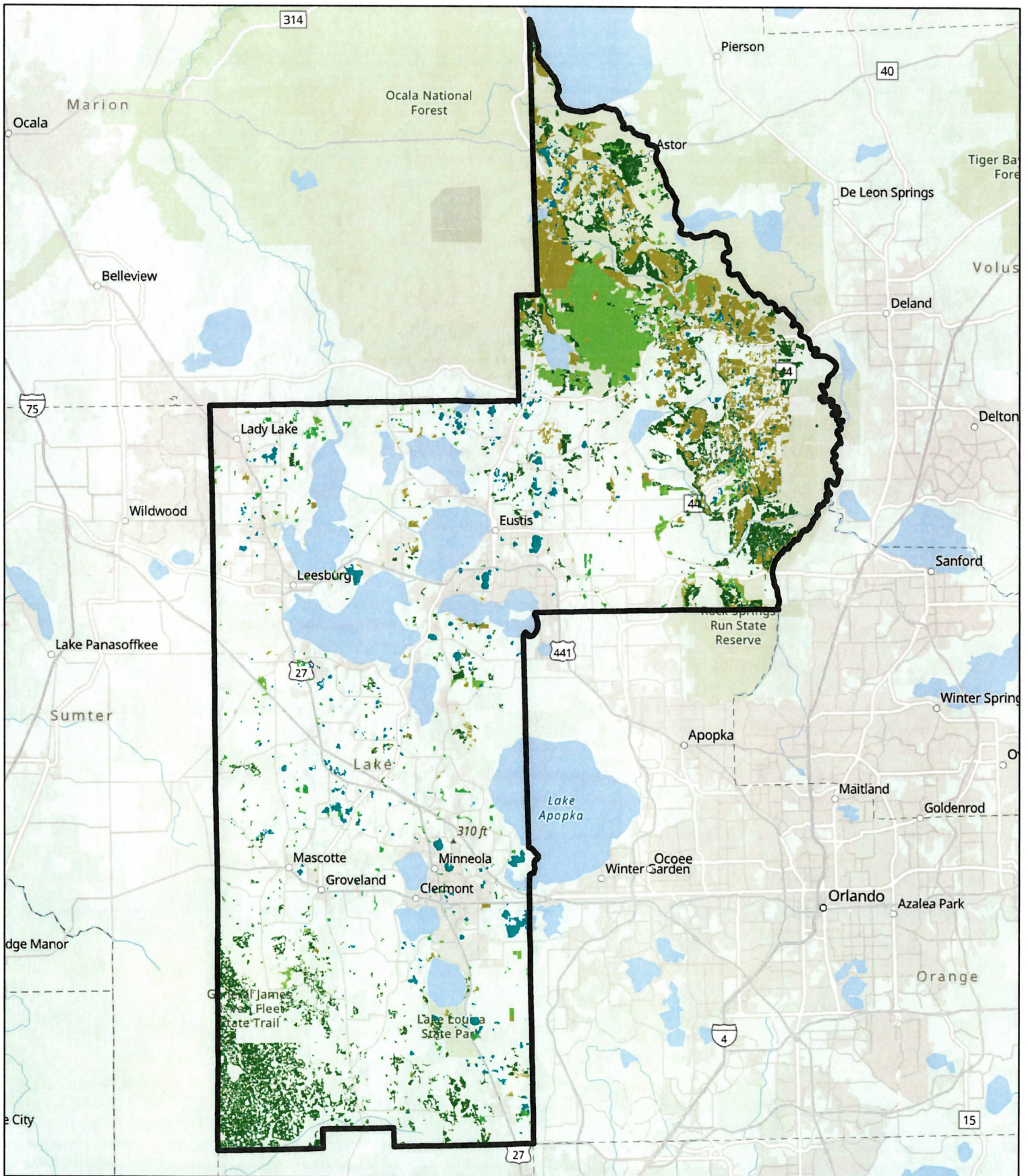
City	
■ ASTATULA	■ LEESBURG
■ CLERMONT	■ MASCOTTE
■ EUSTIS	■ MINNEOLA
■ FRUITLAND PARK	■ MONTVERDE
■ GROVELAND	■ MOUNT DORA
■ HOWEY-IN-THE-HILLS	■ TAVARES
■ LADY LAKE	■ UMATILLA
	■ Conservation Lands

## Lake County Trails & Conservation

-  Trails
-  Lake County Boundary
-  Conservation Lands



This map is intended to be used for planning purposes only and is not to be construed as a legal document. The GIS data available on this map may need field verification as it corresponds to regional scale representation, 1:86,803. Use of geographic information by governmental entities.—When state agencies, water management districts, regional planning councils, local governments, and other governmental entities use maps, including geographic information maps and other graphic information materials, as the source of data for planning or any other purposes, they must take into account that the accuracy and reliability of such maps and data may be limited by various factors, including the scale of the maps, the timeliness and accuracy of the underlying information, the availability of more accurate and the presence or absence of ground truthing or peer review of the underlying information contained in such maps and other graphic information. All Data created and/or reviewed by the ECFRPC.

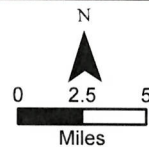


# Lake County FNAI Assessment

## Under-Represented Ecosystems

- Pine Flatwoods (G4)
- Sandhill (G3)

- Sandhill Upland Lake (G3)
- Scrub and Scrubby Flatwoods (G2)
- Upland Hardwood Forest (G5)
- Lake County Boundary



This map is intended to be used for planning purposes only and is not to be construed as a legal document. The GIS data available on this map may need field verification as it corresponds to regional scale representation. 186.803 Use of geographic information by governmental entities.--When state agencies, water management districts, regional planning councils, local governments, and other governmental entities use maps, including geographic information maps and other graphic information materials, as the source of data for planning or any other purposes, they must take into account that the accuracy and reliability of such maps and data may be limited by various factors, including the scale of the maps, the timeliness and accuracy of the underlying information, the availability of more accurate and the presence or absence of ground truthing or peer review of the underlying information contained in such maps and other graphic information. All Data created and/or reviewed by the ECFRPC.