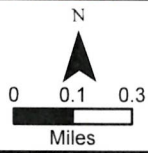
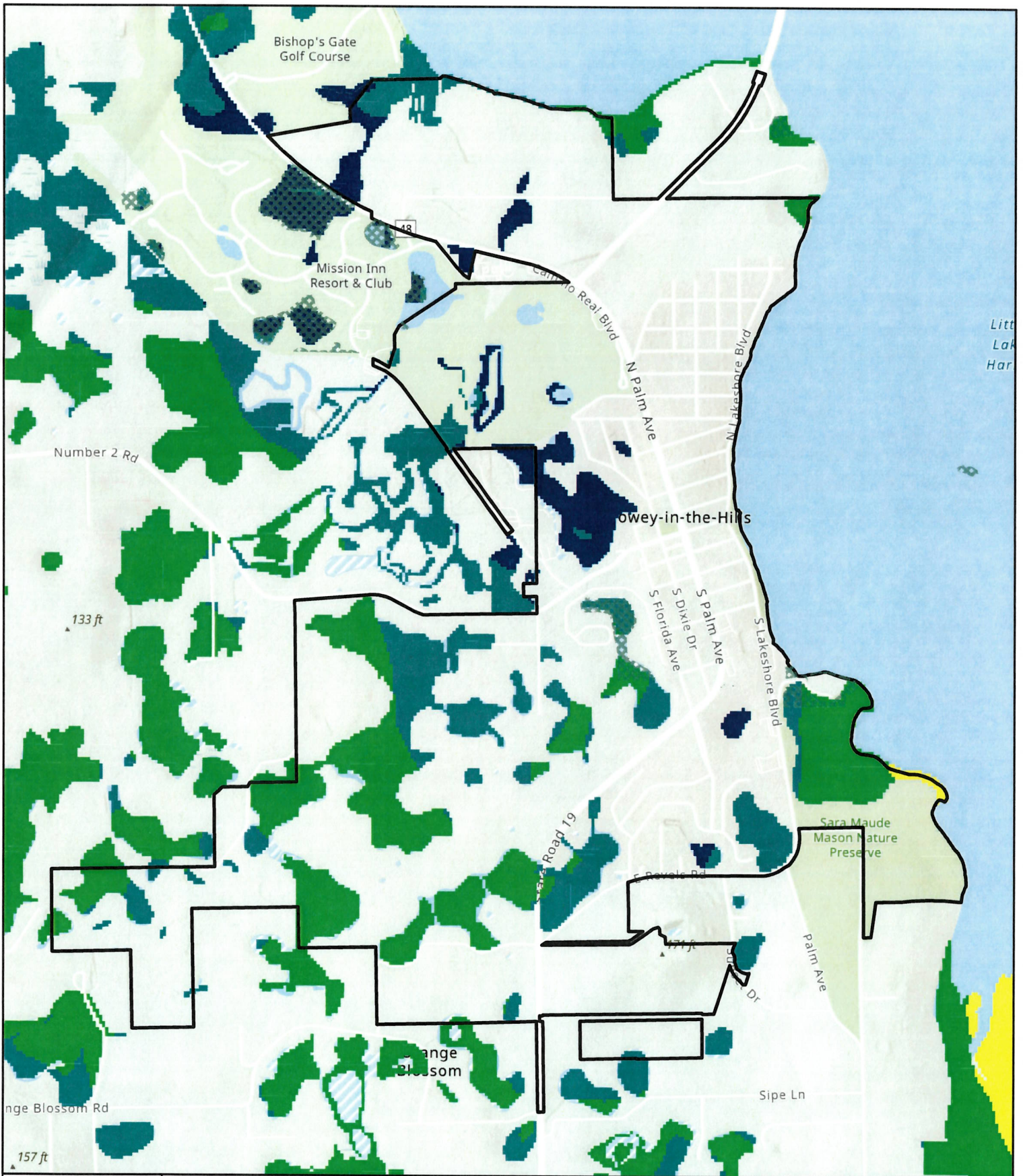


HOWEY-IN-THE-HILLS Conservation Inputs

- Florida Ecological Greenway Network
- Priority 1
- Priority 2
- Priority 4
- Priority 5
- Critical Linkages

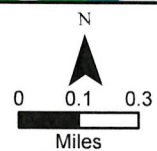


This map is intended to be used for planning purposes only and is not to be construed as a legal document. The GIS data available on this map may need field verification as it corresponds to regional scale representation, 1:86,803. Use of geographic information by governmental entities--When state agencies, water management districts, regional planning councils, local governments, and other governmental entities use maps, including geographic information maps and other graphic information materials, as the source of data for planning or any other purposes, they must take into account that the accuracy and reliability of such maps and data may be limited by various factors, including the scale of the maps, the timeliness and accuracy of the underlying information, the availability of more accurate and the presence or absence of ground truthing or peer review of the underlying information contained in such maps and other graphic information. All Data created and/or reviewed by the ECFRPC.

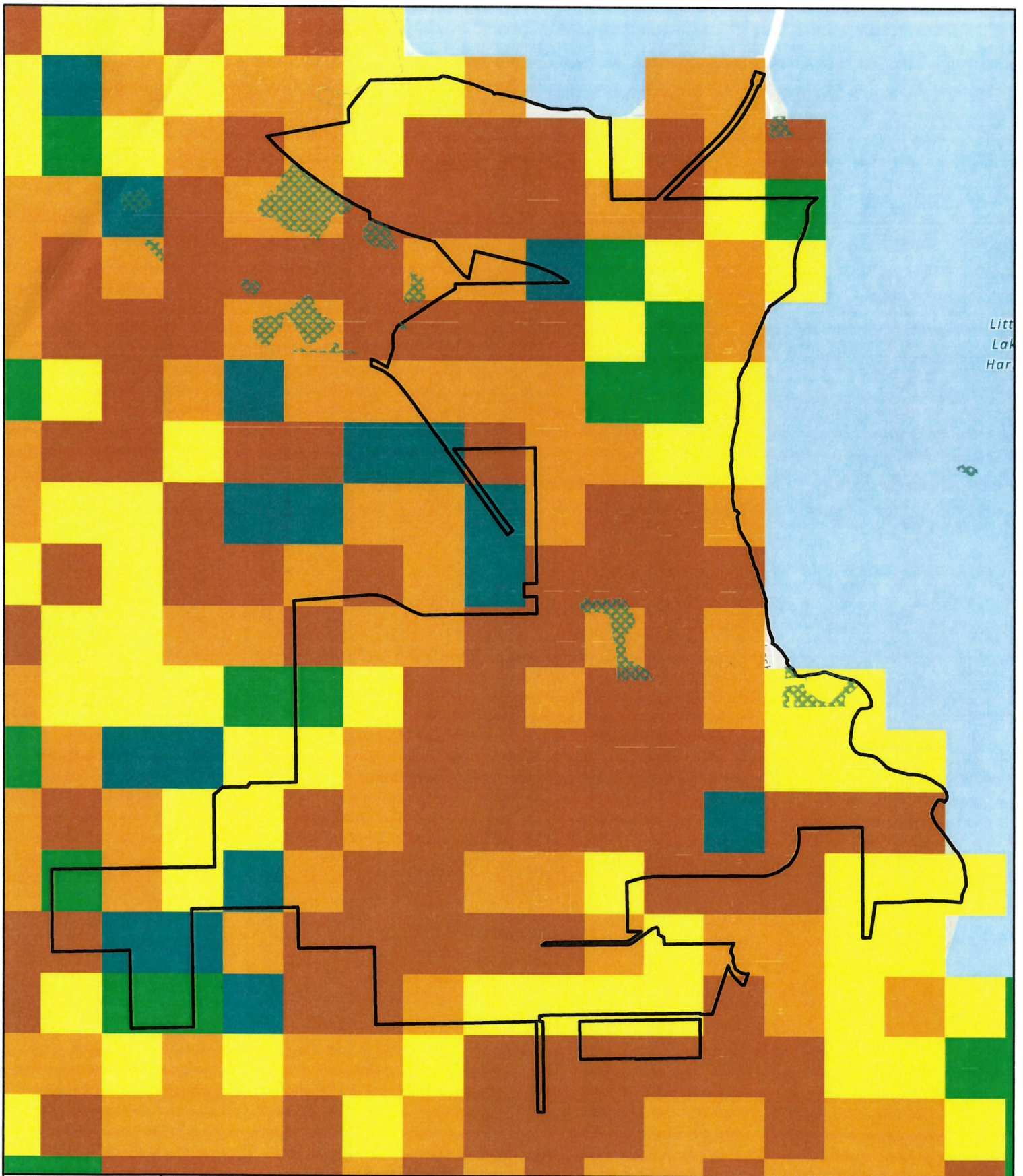


**HOWEY-IN-THE-HILLS
Conservation
Inputs**

Functional Wetlands	Priority 2	Priority 5
Priority 1	Priority 3	Priority 6
- HIGHEST	Priority 4	



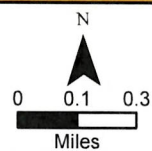
This map is intended to be used for planning purposes only and is not to be construed as a legal document. The GIS data available on this map may need field verification as it corresponds to regional scale representation. 186.803 Use of geographic information by governmental entities.--When state agencies, water management districts, regional planning councils, local governments, and other governmental entities use maps, including geographic information maps and other graphic information materials, as the source of data for planning or any other purposes, they must take into account that the accuracy and reliability of such maps and data may be limited by various factors, including the scale of the maps, the timeliness and accuracy of the underlying information, the availability of more accurate and the presence or absence of ground truthing or peer review of the underlying information contained in such maps and other graphic information. All Data created and/or reviewed by the ECFRPC.



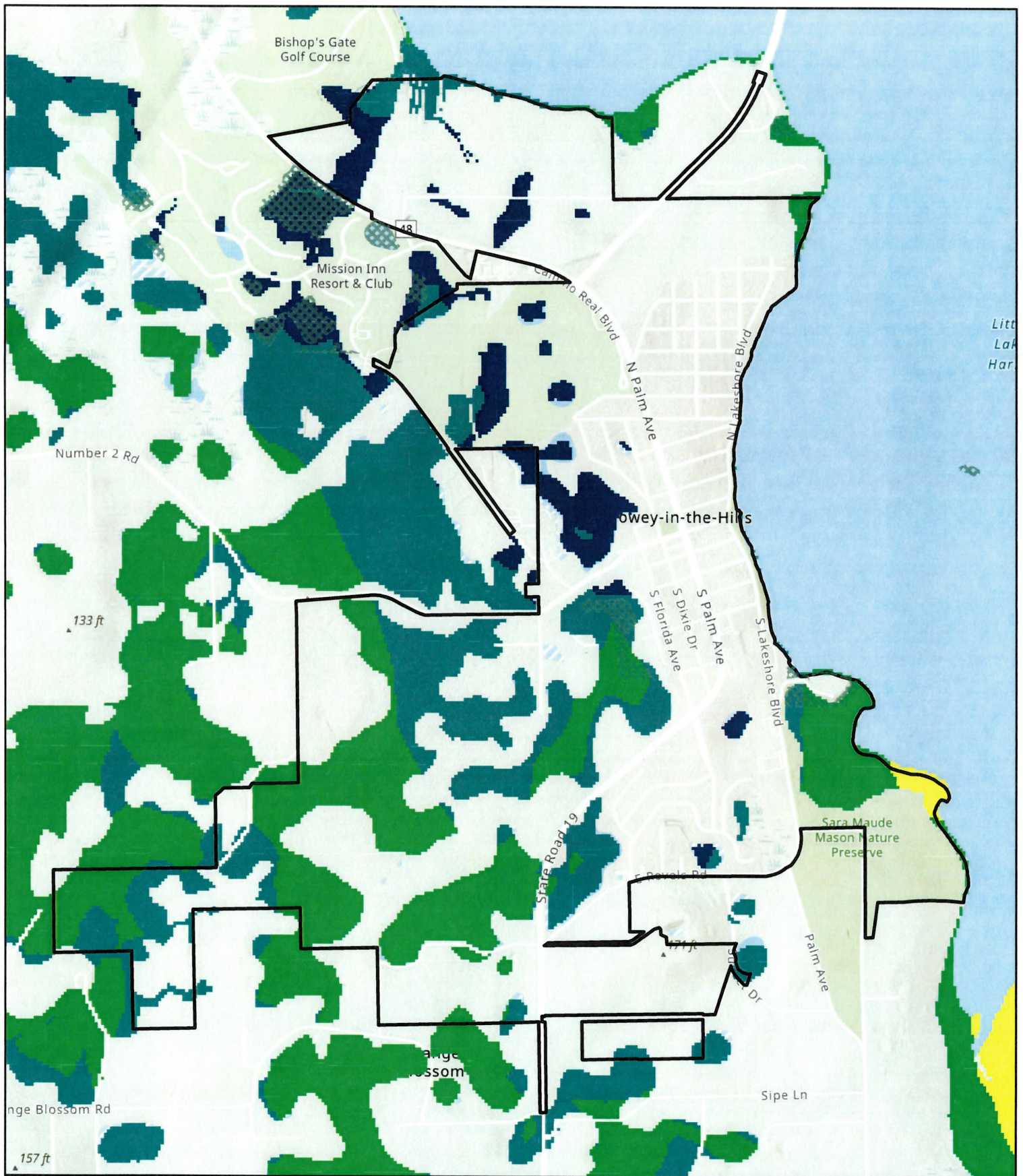
Litt
Lak
Har

**HOWEY-IN-THE-HILLS
Conservation
Inputs**

Groundwater Recharge	Priority 2	Priority 5
Priority 1	Priority 3	Priority 6
- HIGHEST	Priority 4	

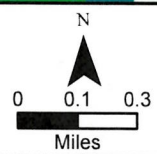


This map is intended to be used for planning purposes only and is not to be construed as a legal document. The GIS data available on this map may need field verification as it corresponds to regional scale representation. 186.803 Use of geographic information by governmental entities.--When state agencies, water management districts, regional planning councils, local governments, and other governmental entities use maps, including geographic information maps and other graphic information materials, as the source of data for planning or any other purposes, they must take into account that the accuracy and reliability of such maps and data may be limited by various factors, including the scale of the maps, the timeliness and accuracy of the underlying information, the availability of more accurate and the presence or absence of ground truthing or peer review of the underlying information contained in such maps and other graphic information. All Data created and/or reviewed by the ECFRPC.

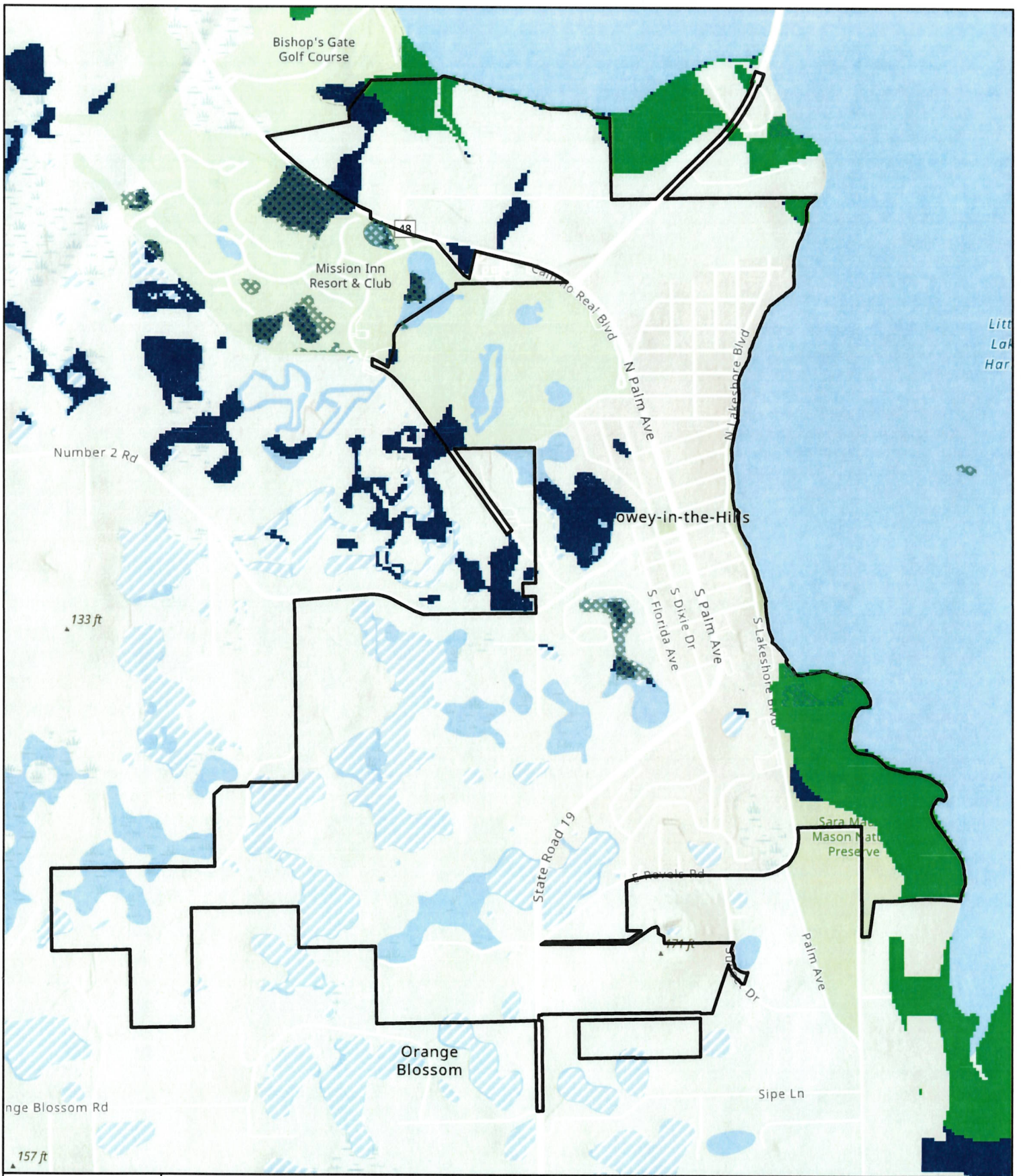


HOWEY-IN-THE-HILLS Conservation Inputs

Natural Floodplain Function	 Priority 2	 Priority 6
	 Priority 3	 City Limits
	 Priority 4	 Conservation Lands
	 Priority 5	
	 Priority 1 - HIGHEST	

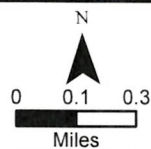


This map is intended to be used for planning purposes only and is not to be construed as a legal document. The GIS data available on this map may need field verification as it corresponds to regional scale representation. 186.803 Use of geographic information by governmental entities.—When state agencies, water management districts, regional planning councils, local governments, and other governmental entities use maps, including geographic information maps and other graphic information materials, as the source of data for planning or any other purposes, they must take into account that the accuracy and reliability of such maps and data may be limited by various factors, including the scale of the maps, the timeliness and accuracy of the underlying information, the availability of more accurate and the presence or absence of ground truthing or peer review of the underlying information contained in such maps and other graphic information. All Data created and/or reviewed by the ECFRPC.

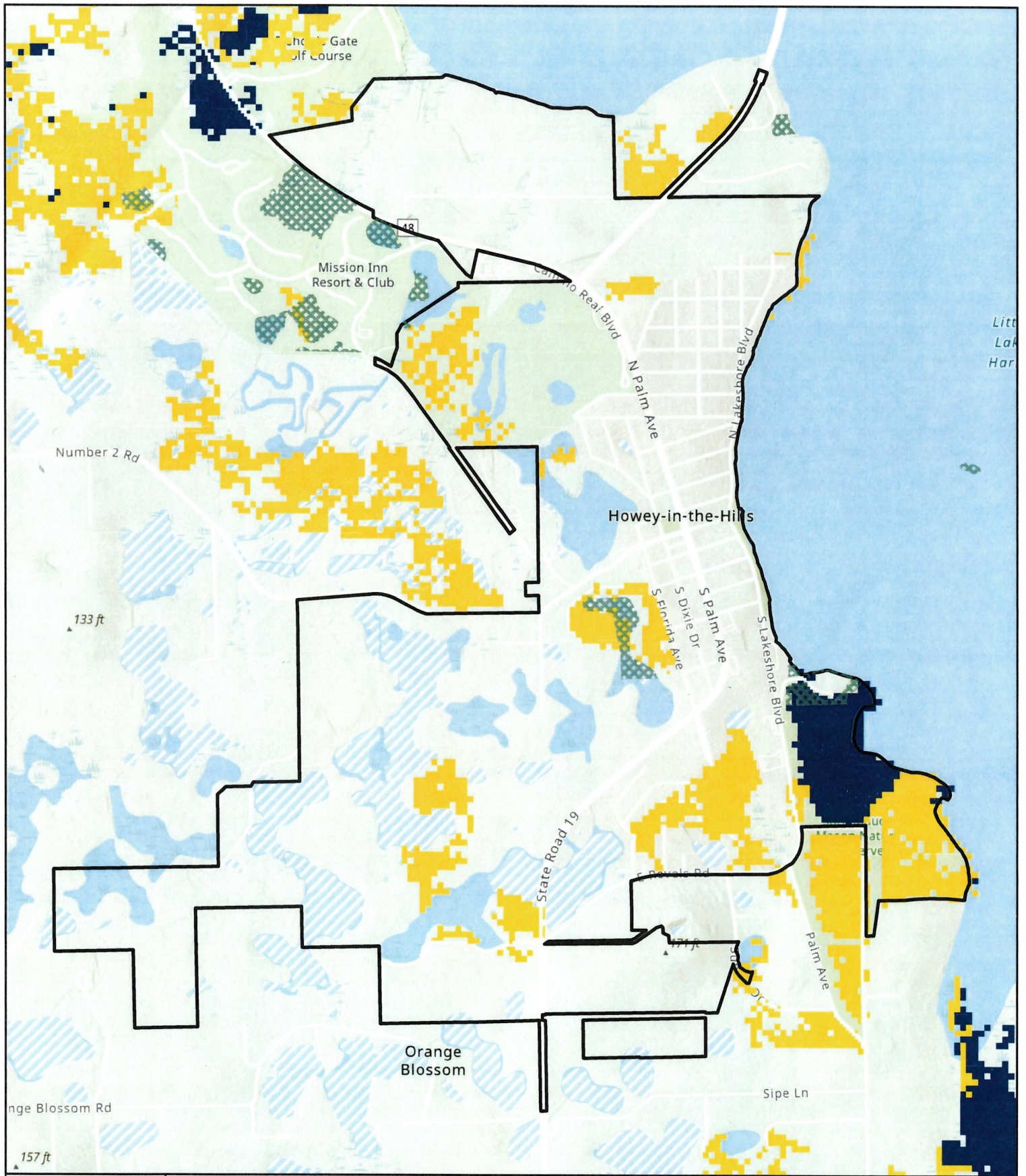


HOWEY-IN-THE-HILLS Conservation Inputs

- | | | | | | | |
|--|------------|------------|------------|------------|------------|------------|
| Rare Species Habitat Conservation Priorities | Priority 1 | Priority 2 | Priority 3 | Priority 4 | Priority 5 | Priority 6 |
| | | | | | | |
| | HIGHEST | | | | | |



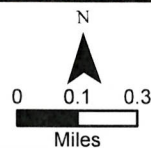
This map is intended to be used for planning purposes only and is not to be construed as a legal document. The GIS data available on this map may need field verification as it corresponds to regional scale representation. 186.803 Use of geographic information by governmental entities.--When state agencies, water management districts, regional planning councils, local governments, and other governmental entities use maps, including geographic information maps and other graphic information materials, as the source of data for planning or any other purposes, they must take into account that the accuracy and reliability of such maps and data may be limited by various factors, including the scale of the maps, the timeliness and accuracy of the underlying information, the availability of more accurate and the presence or absence of ground truthing or peer review of the underlying information contained in such maps and other graphic information. All Data created and/or reviewed by the ECFRPC.



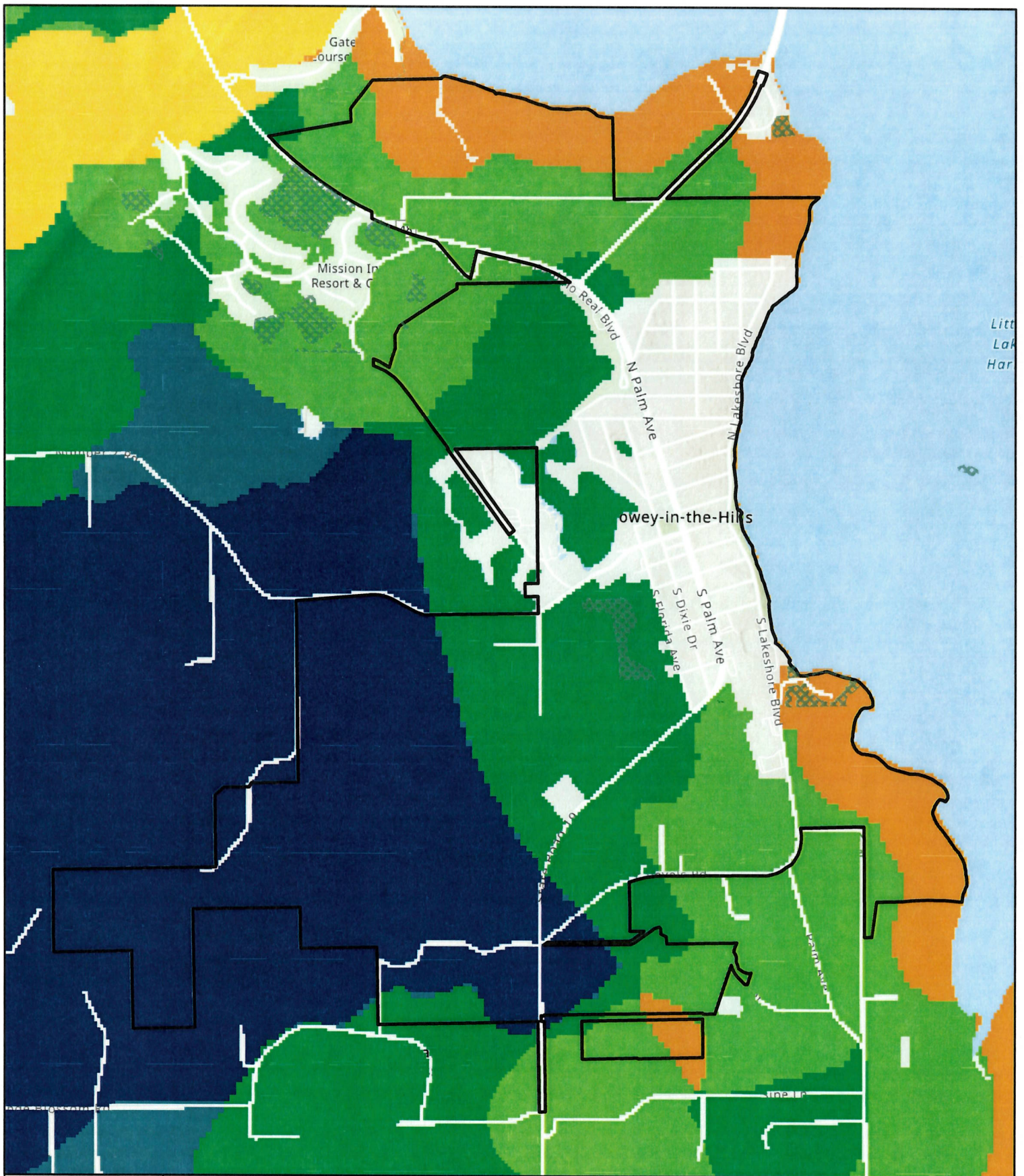
**HOWEY-IN-THE-HILLS
Conservation
Inputs**

Strategic
Habitat
Conservation
Areas

- Priority 3
- Priority 5
- Priority 4
- Priority 2

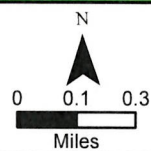


This map is intended to be used for planning purposes only and is not to be construed as a legal document. The GIS data available on this map may need field verification as it corresponds to regional scale representation, 186,803 Use of geographic information by governmental entities.--When state agencies, water management districts, regional planning councils, local governments, and other governmental entities use maps, including geographic information maps and other graphic information materials, as the source of data for planning or any other purposes, they must take into account that the accuracy and reliability of such maps and data may be limited by various factors, including the scale of the maps, the timeliness and accuracy of the underlying information, the availability of more accurate and the presence or absence of ground truthing or peer review of the underlying information contained in such maps and other graphic information. All Data created and/or reviewed by the ECFRPC.

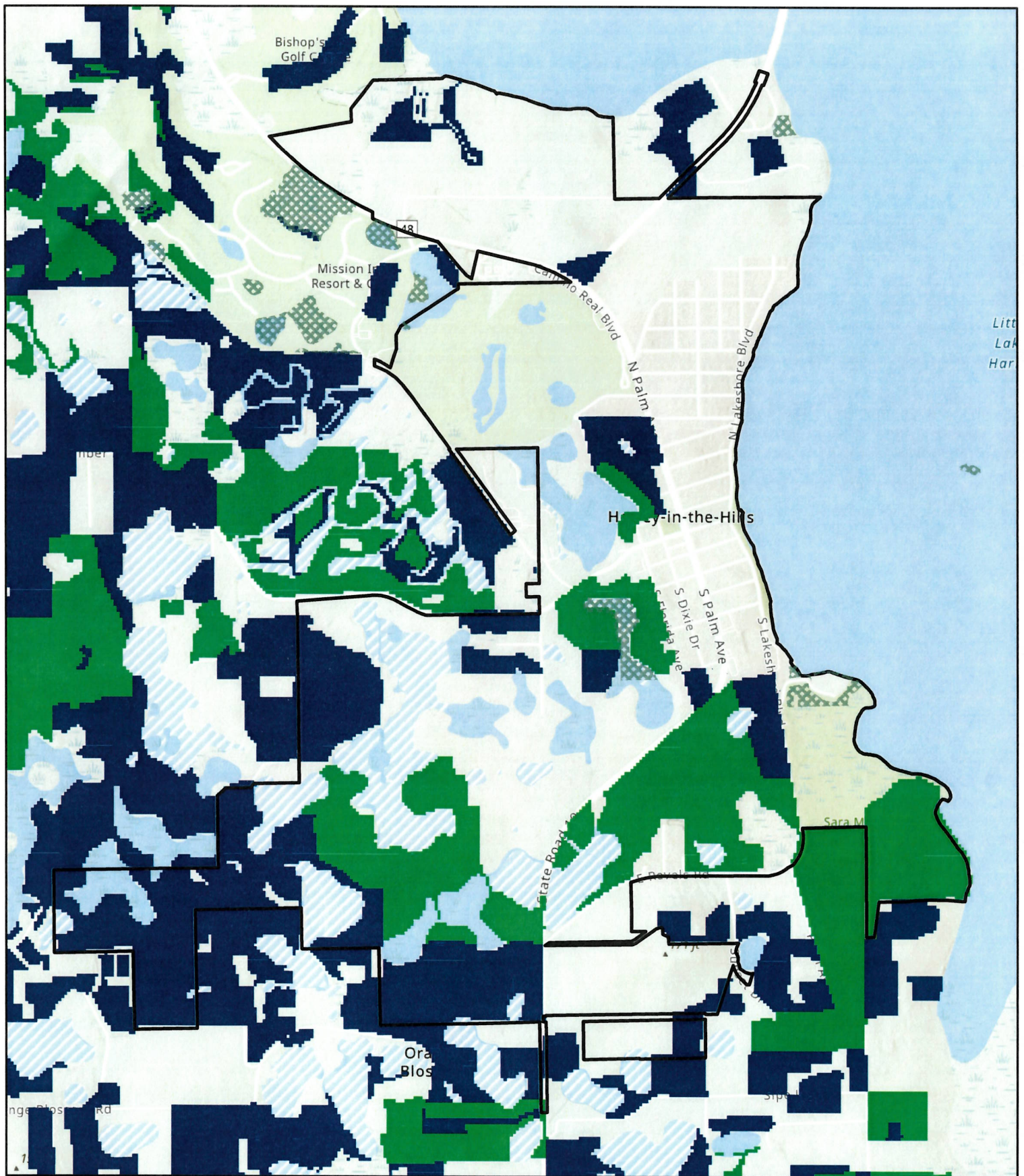


HOWEY-IN-THE-HILLS Conservation Inputs

Surface Water Protection	Priority 2	Priority 5
Priority 1	Priority 3	Priority 6
HIGHEST	Priority 4	Priority 7

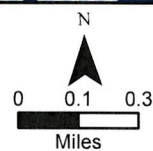


This map is intended to be used for planning purposes only and is not to be construed as a legal document. The GIS data available on this map may need field verification as it corresponds to regional scale representation. 186.803 Use of geographic information by governmental entities.—When state agencies, water management districts, regional planning councils, local governments, and other governmental entities use maps, including geographic information maps and other graphic information materials, as the source of data for planning or any other purposes, they must take into account that the accuracy and reliability of such maps and data may be limited by various factors, including the scale of the maps, the timeliness and accuracy of the underlying information, the availability of more accurate and the presence or absence of ground truthing or peer review of the underlying information contained in such maps and other graphic information. All Data created and/or reviewed by the ECFRPC.

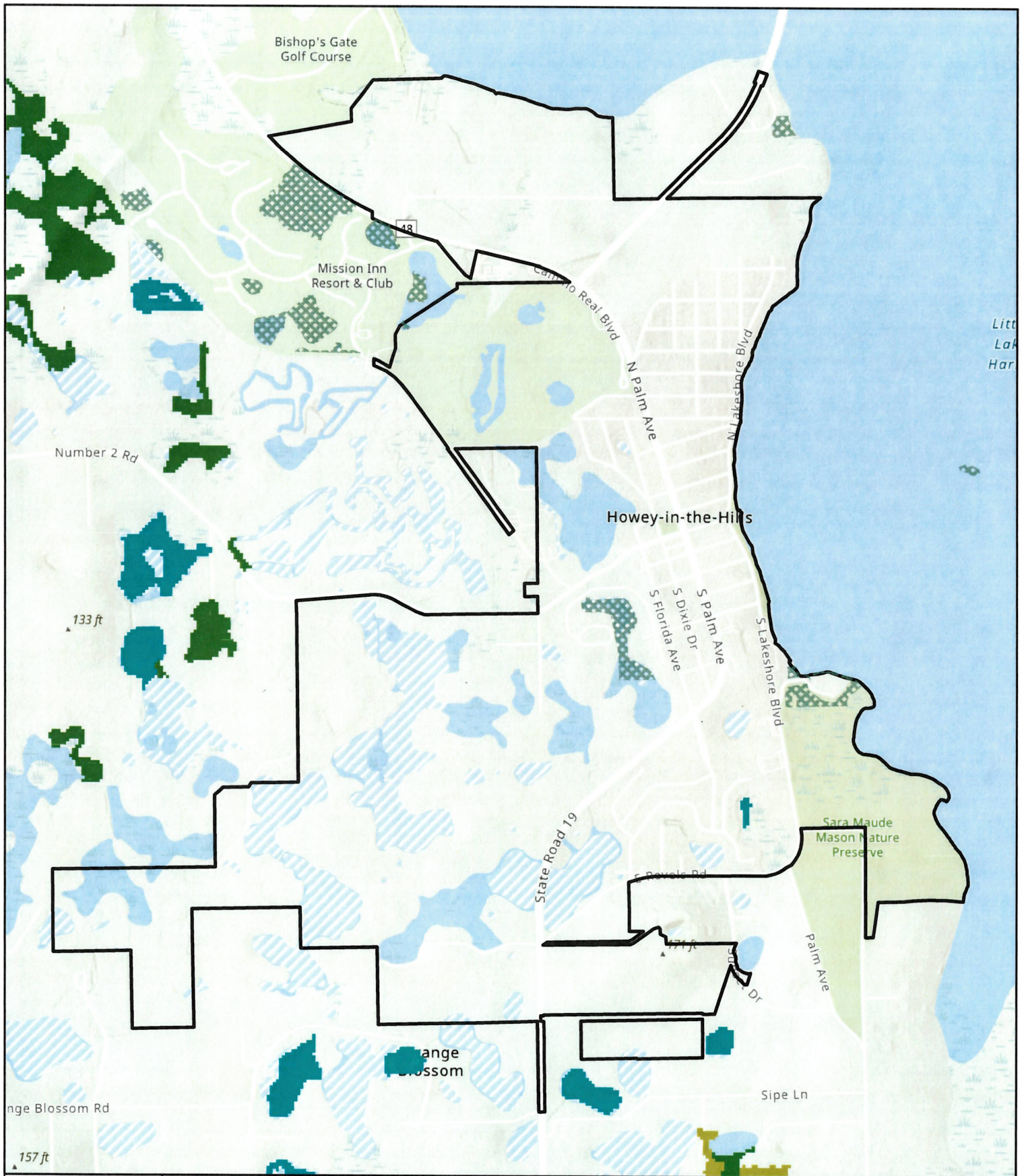


HOWEY-IN-THE-HILLS Conservation Inputs

- | | | |
|----------------------|------------|------------|
| Sustainable Forestry | Priority 2 | Priority 5 |
| Priority 1 - HIGHEST | Priority 3 | |

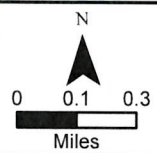


This map is intended to be used for planning purposes only and is not to be construed as a legal document. The GIS data available on this map may need field verification as it corresponds to regional scale representation. 186.803 Use of geographic information by governmental entities.--When state agencies, water management districts, regional planning councils, local governments, and other governmental entities use maps, including geographic information maps and other graphic information materials, as the source of data for planning or any other purposes, they must take into account that the accuracy and reliability of such maps and data may be limited by various factors, including the scale of the maps, the timeliness and accuracy of the underlying information, the availability of more accurate and the presence or absence of ground truthing or peer review of the underlying information contained in such maps and other graphic information. All Data created and/or reviewed by the ECFRPC.



HOWEY-IN-THE-HILLS Conservation Inputs

- | | | | | |
|------------------------------|---------------|---------------------------|----------------------------------|-----------------------------|
| Under-Represented Ecosystems | Sandhill (G3) | Sandhill Upland Lake (G3) | Scrub and Scrubby Flatwoods (G2) | Upland Hardwood Forest (G5) |
| Pine Flatwoods (G4) | Pine | | | |



This map is intended to be used for planning purposes only and is not to be construed as a legal document. The GIS data available on this map may need field verification as it corresponds to regional scale representation. 186.803 Use of geographic information by governmental entities.--When state agencies, water management districts, regional planning councils, local governments, and other governmental entities use maps, including geographic information maps and other graphic information materials, as the source of data for planning or any other purposes, they must take into account that the accuracy and reliability of such maps and data may be limited by various factors, including the scale of the maps, the timeliness and accuracy of the underlying information, the availability of more accurate and the presence or absence of ground truthing or peer review of the underlying information contained in such maps and other graphic information. All Data created and/or reviewed by the ECFRPC.