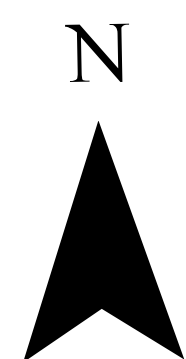
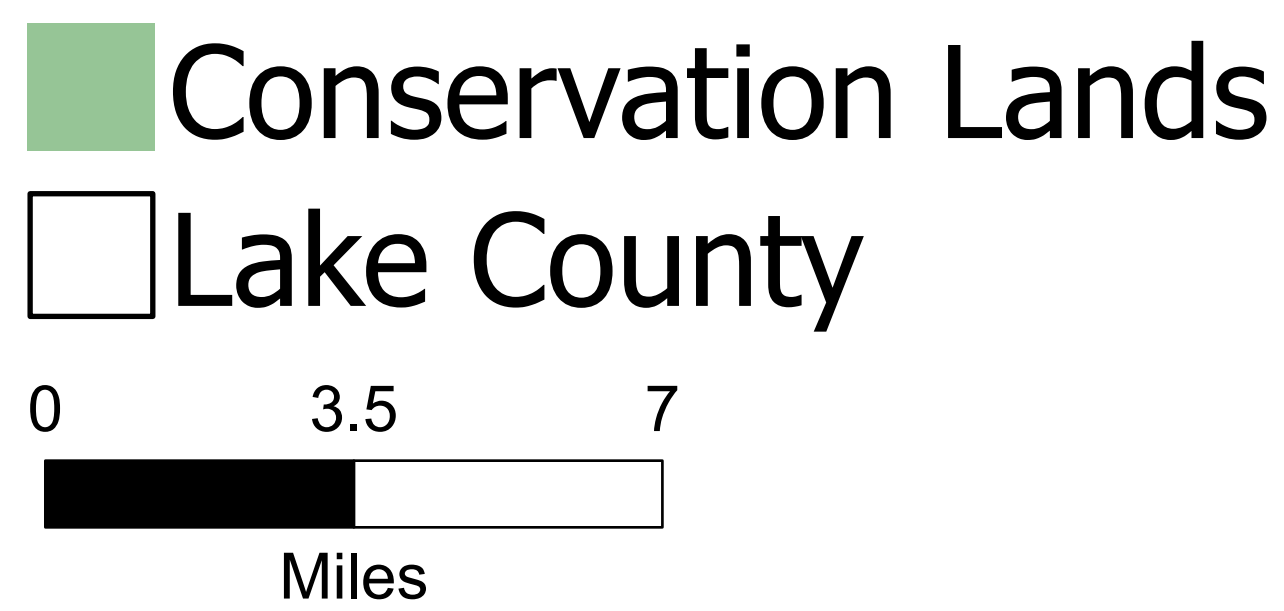


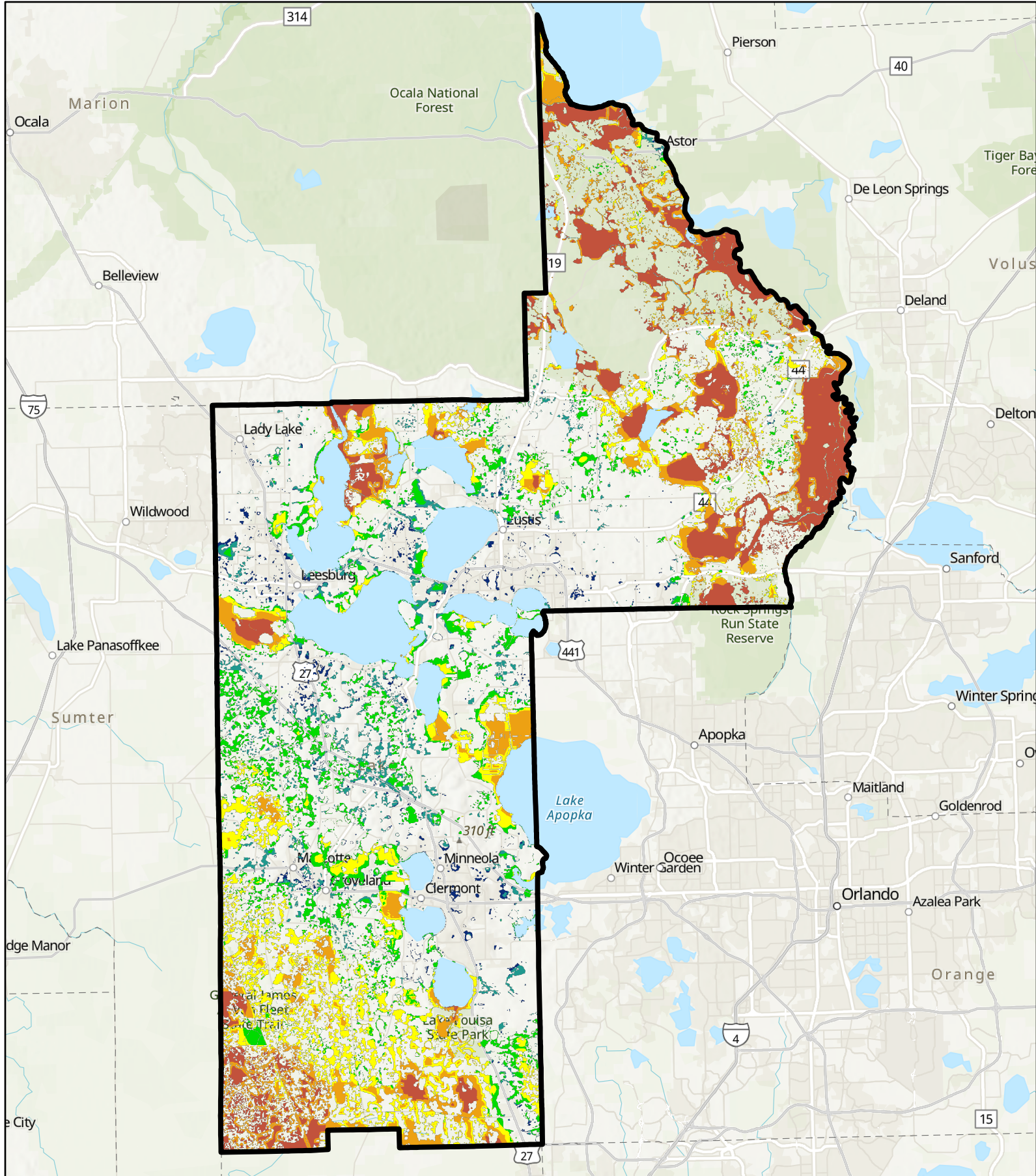
Lake County Conservation Lands






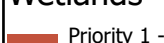


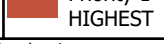
THE INSTITUTE FOR
WATER AND ENVIRONMENTAL
RESILIENCE
STETSON UNIVERSITY

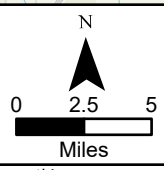


This map is intended to be used for planning purposes only and is not to be construed as a legal document. The GIS data available on this map may need field verification as it corresponds to regional scale representation. 186,803 Use of geographic information by governmental entities--When state agencies, water management districts, regional planning councils, local governments, and other governmental entities use maps, including geographic information maps and other graphic information materials, as the source of data for planning or any other purposes, they must take into account that the accuracy and reliability of such maps and data may be limited by various factors, including the scale of the maps, the timeliness and accuracy of the underlying information, the availability of more accurate and the presence or absence of ground truthing or peer review of the underlying information contained in such maps and other graphic information. All Data created and/or reviewed by the ECFRPC.

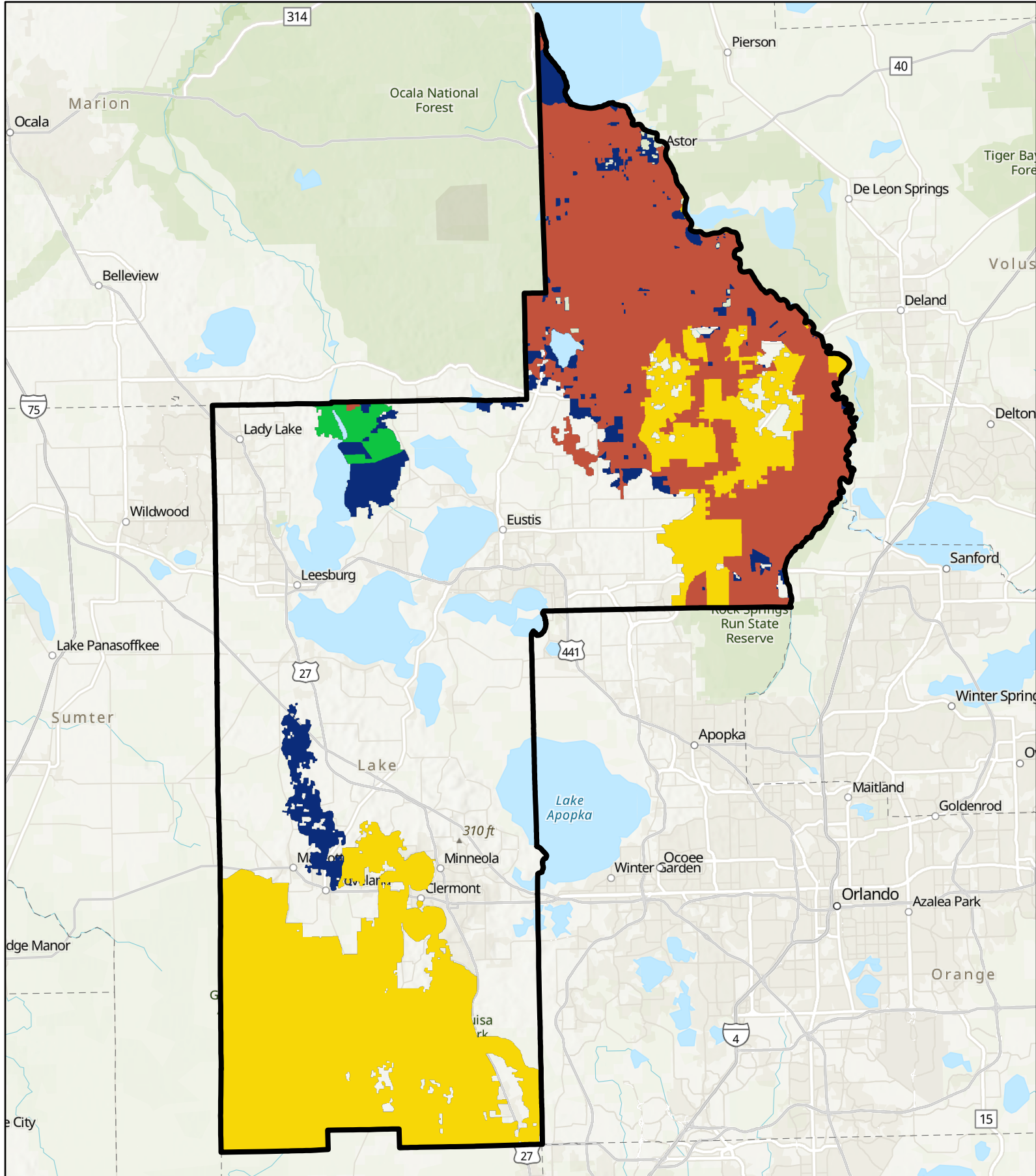


Lake County FNAI Assessment

Functional Wetlands	 Priority 1 - HIGHEST	 Priority 2	 Priority 6
	 Priority 3	 Priority 4	 Lake County Boundary
	 Priority 5		



This map is intended to be used for planning purposes only and is not to be construed as a legal document. The GIS data available on this map may need field verification as it corresponds to regional scale representation. 186.803 Use of geographic information by governmental entities.--When state agencies, water management districts, regional planning councils, local governments, and other governmental entities use maps, including geographic information maps and other graphic information materials, as the source of data for planning or any other purposes, they must take into account that the accuracy and reliability of such maps and data may be limited by various factors, including the scale of the maps, the timeliness and accuracy of the underlying information, the availability of more accurate and the presence or absence of ground truthing or peer review of the underlying information contained in such maps and other graphic information. All Data created and/or reviewed by the ECFRPC.

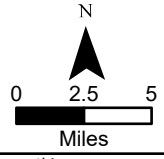


**Lake County
FNAI
Assessment**

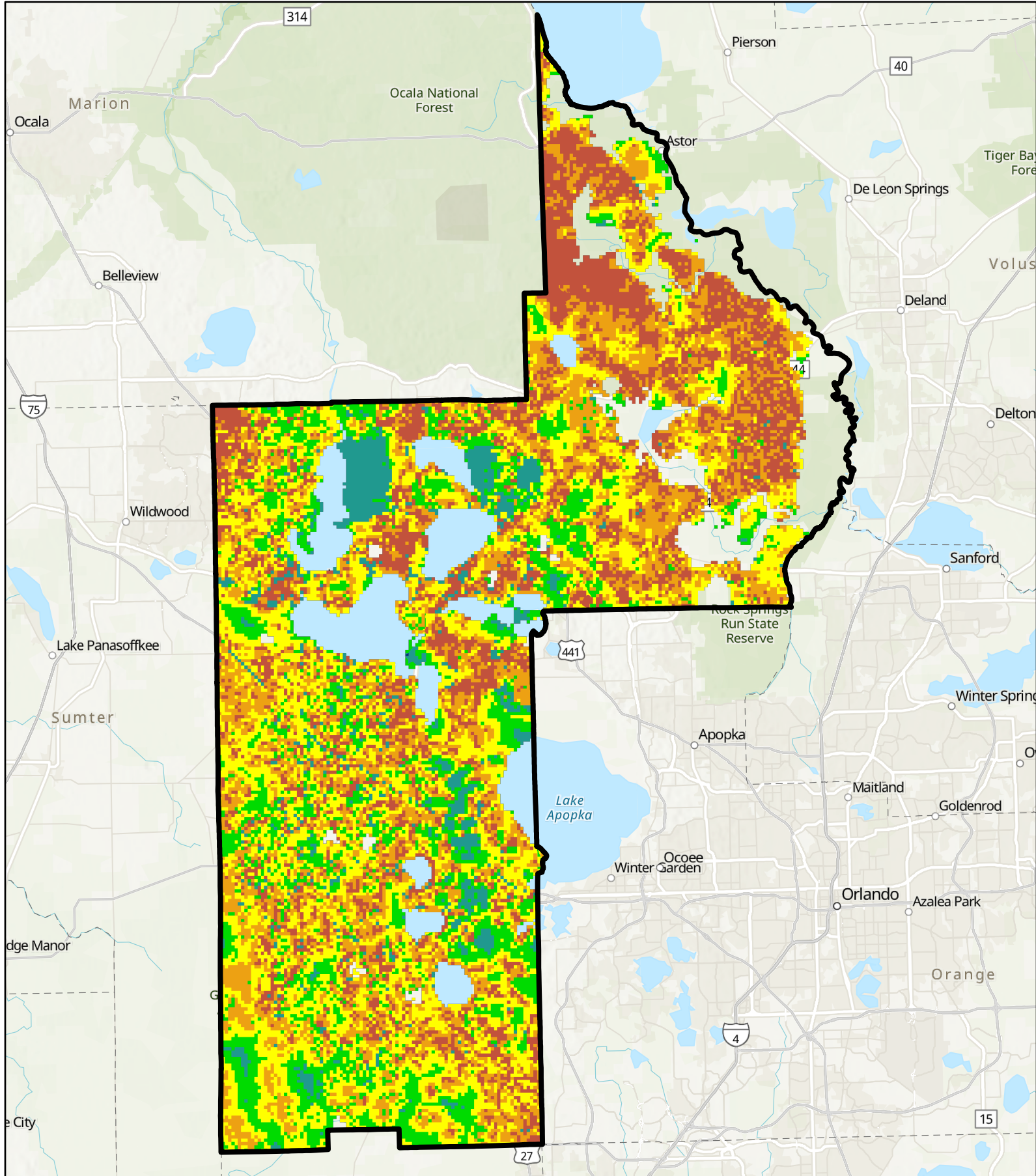
**Florida Ecological
Greenway Network**

- Priority 1 - Critical Linkages

- Priority 2
- Priority 4
- Priority 5
- Lake County Boundary



This map is intended to be used for planning purposes only and is not to be construed as a legal document. The GIS data available on this map may need field verification as it corresponds to regional scale representation. 186.803 Use of geographic information by governmental entities.--When state agencies, water management districts, regional planning councils, local governments, and other governmental entities use maps, including geographic information maps and other graphic information materials, as the source of data for planning or any other purposes, they must take into account that the accuracy and reliability of such maps and data may be limited by various factors, including the scale of the maps, the timeliness and accuracy of the underlying information, the availability of more accurate and the presence or absence of ground truthing or peer review of the underlying information contained in such maps and other graphic information. All Data created and/or reviewed by the ECFRPC.



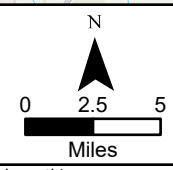
Lake County FNAI Assessment

Groundwater Recharge

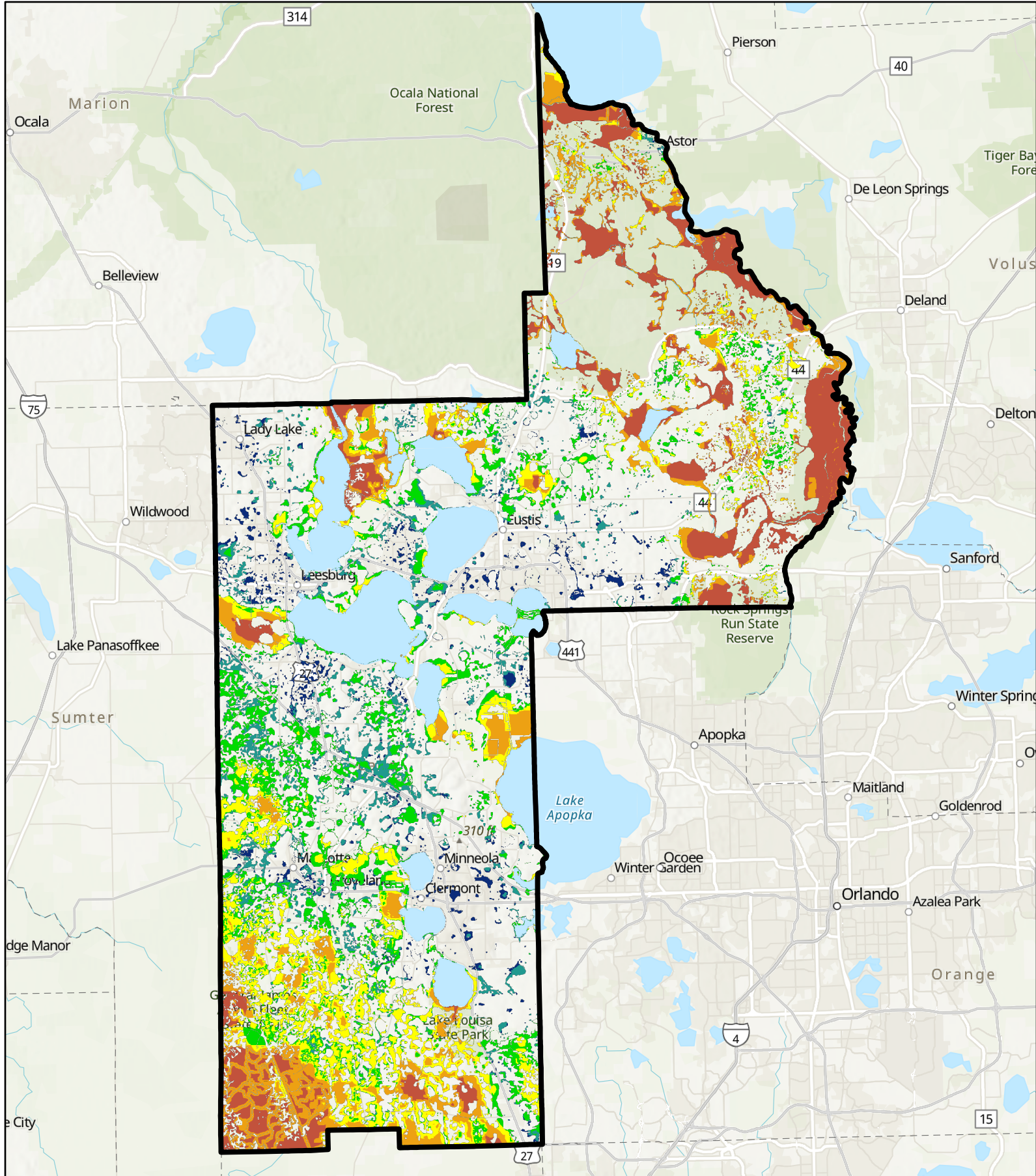
- Priority 1 - HIGHEST
- Priority 2
- Priority 3

- Priority 4
- Priority 5
- Priority 6

Lake County Boundary



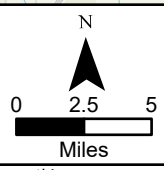
This map is intended to be used for planning purposes only and is not to be construed as a legal document. The GIS data available on this map may need field verification as it corresponds to regional scale representation. 186.803 Use of geographic information by governmental entities.--When state agencies, water management districts, regional planning councils, local governments, and other governmental entities use maps, including geographic information maps and other graphic information materials, as the source of data for planning or any other purposes, they must take into account that the accuracy and reliability of such maps and data may be limited by various factors, including the scale of the maps, the timeliness and accuracy of the underlying information, the availability of more accurate and the presence or absence of ground truthing or peer review of the underlying information contained in such maps and other graphic information. All Data created and/or reviewed by the ECFRPC.



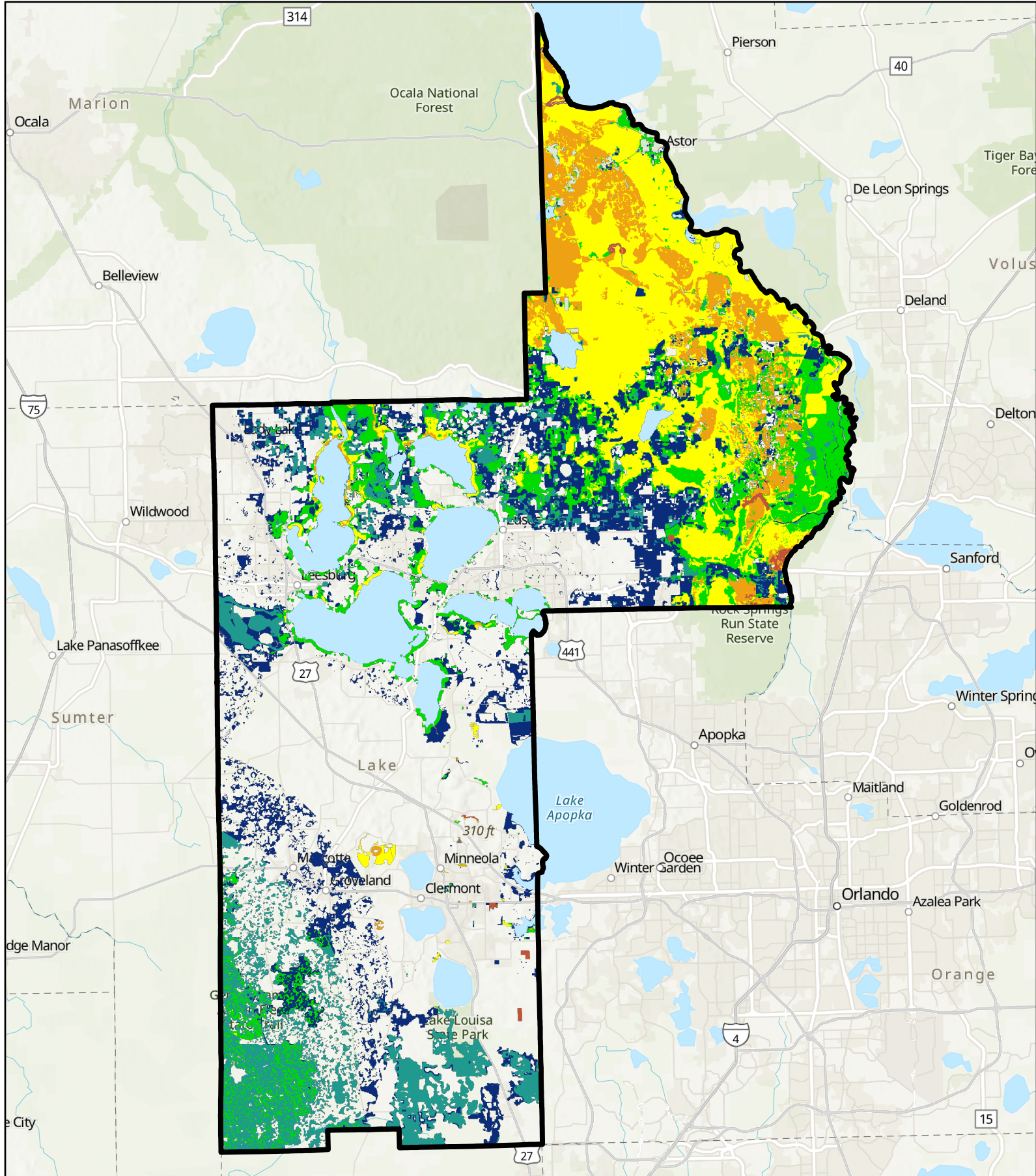
Lake County FNAI Assessment

Natural Floodplain Function

- Priority 1 - HIGHEST
- Priority 2
- Priority 3
- Priority 4
- Priority 5
- Priority 6
- Lake County Boundary



This map is intended to be used for planning purposes only and is not to be construed as a legal document. The GIS data available on this map may need field verification as it corresponds to regional scale representation. 186.803 Use of geographic information by governmental entities.--When state agencies, water management districts, regional planning councils, local governments, and other governmental entities use maps, including geographic information maps and other graphic information materials, as the source of data for planning or any other purposes, they must take into account that the accuracy and reliability of such maps and data may be limited by various factors, including the scale of the maps, the timeliness and accuracy of the underlying information, the availability of more accurate and the presence or absence of ground truthing or peer review of the underlying information contained in such maps and other graphic information. All Data created and/or reviewed by the ECFRPC.

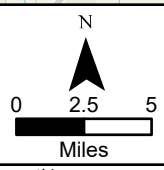


Lake County FNAI Assessment

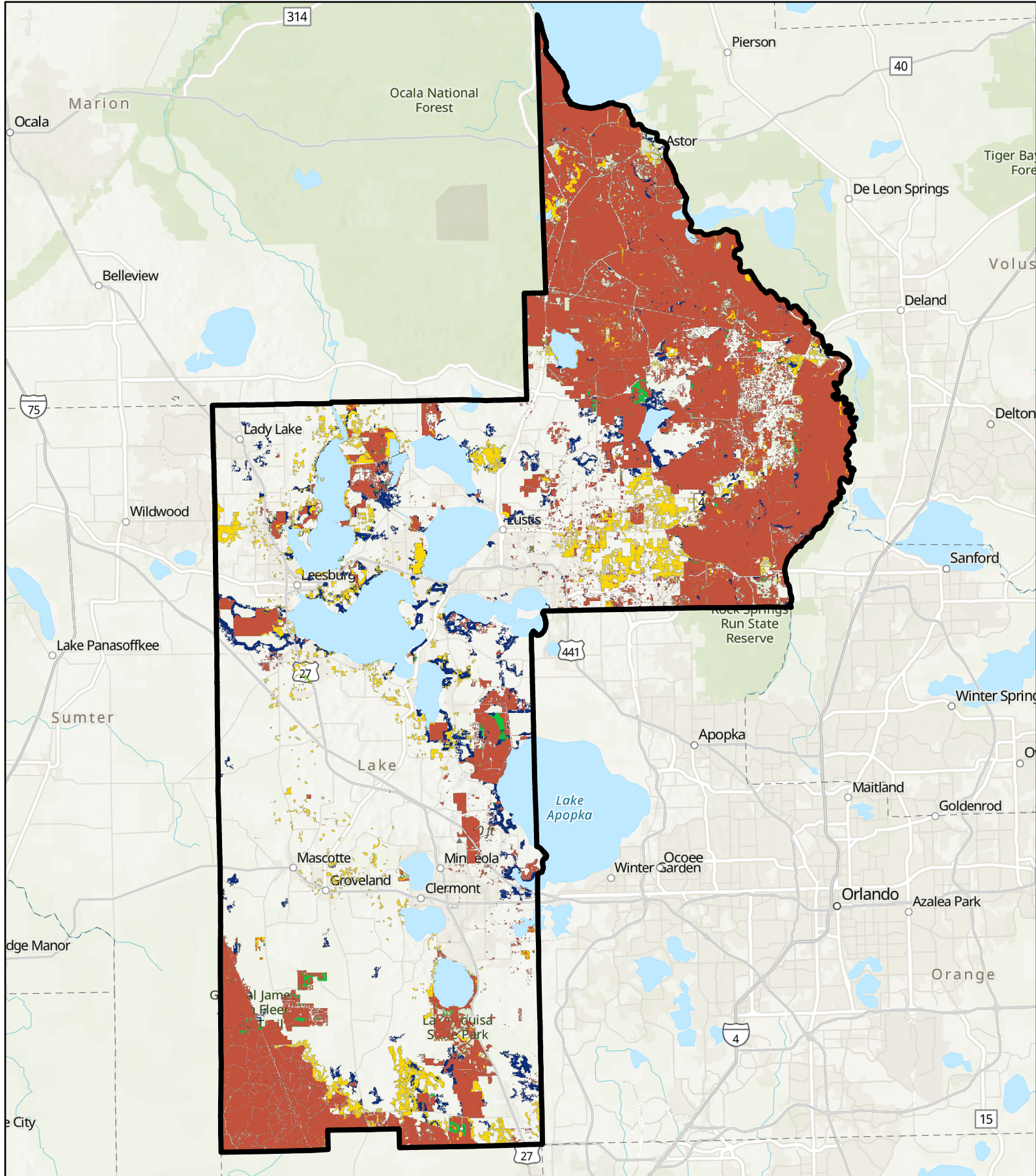
Rare Species Habitat Conservation Priorities

- Priority 1 - HIGHEST
- Priority 2

- Priority 3
- Priority 4
- Priority 5
- Priority 6
- Lake County Boundary



This map is intended to be used for planning purposes only and is not to be construed as a legal document. The GIS data available on this map may need field verification as it corresponds to regional scale representation. 186.803 Use of geographic information by governmental entities.--When state agencies, water management districts, regional planning councils, local governments, and other governmental entities use maps, including geographic information maps and other graphic information materials, as the source of data for planning or any other purposes, they must take into account that the accuracy and reliability of such maps and data may be limited by various factors, including the scale of the maps, the timeliness and accuracy of the underlying information, the availability of more accurate and the presence or absence of ground truthing or peer review of the underlying information contained in such maps and other graphic information. All Data created and/or reviewed by the ECFRPC.

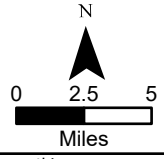


**Lake County
FNAI
Assessment**

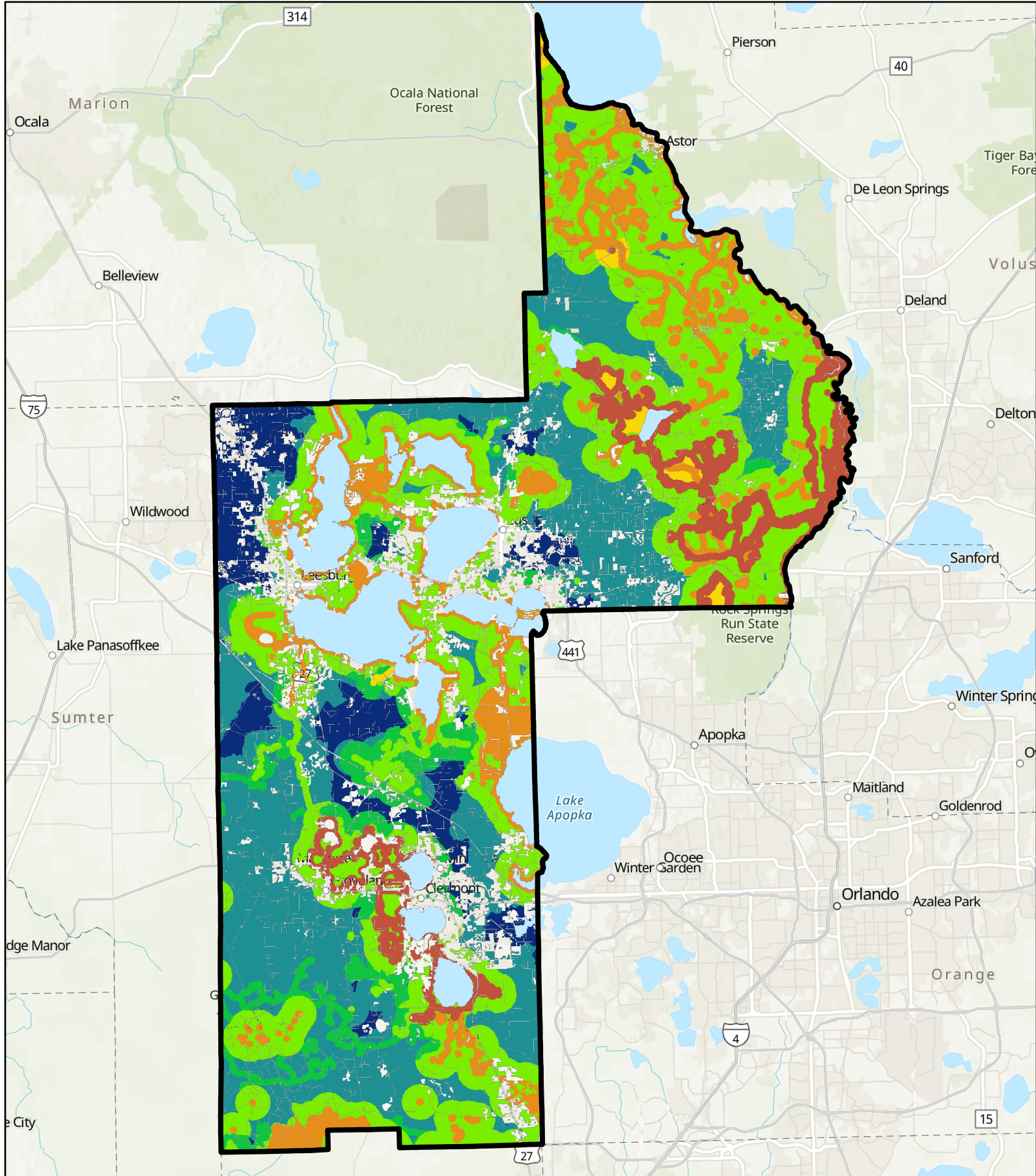
**Strategic Habitat
Conservation Areas**

Priority 2

- Priority 3
- Priority 4
- Priority 5
- Lake County Boundary



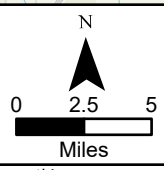
This map is intended to be used for planning purposes only and is not to be construed as a legal document. The GIS data available on this map may need field verification as it corresponds to regional scale representation. 186.803 Use of geographic information by governmental entities.--When state agencies, water management districts, regional planning councils, local governments, and other governmental entities use maps, including geographic information maps and other graphic information materials, as the source of data for planning or any other purposes, they must take into account that the accuracy and reliability of such maps and data may be limited by various factors, including the scale of the maps, the timeliness and accuracy of the underlying information, the availability of more accurate and the presence or absence of ground truthing or peer review of the underlying information contained in such maps and other graphic information. All Data created and/or reviewed by the ECFRPC.



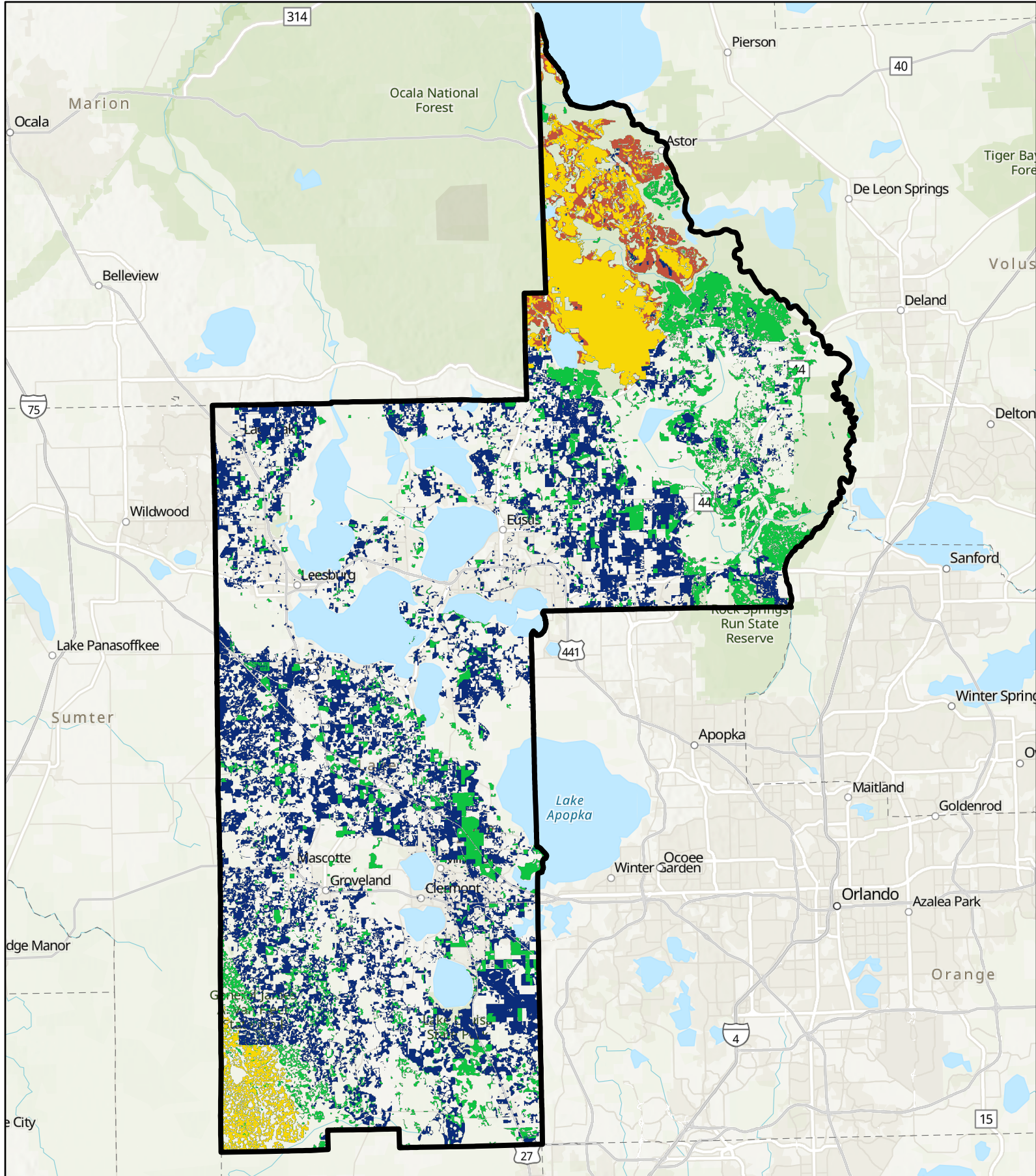
Lake County FNAI Assessment

Surface Water Protection

- Priority 2
- Priority 3
- Priority 4
- Priority 5
- Priority 6
- Priority 7
- Lake County Boundary



This map is intended to be used for planning purposes only and is not to be construed as a legal document. The GIS data available on this map may need field verification as it corresponds to regional scale representation. 186.803 Use of geographic information by governmental entities.--When state agencies, water management districts, regional planning councils, local governments, and other governmental entities use maps, including geographic information maps and other graphic information materials, as the source of data for planning or any other purposes, they must take into account that the accuracy and reliability of such maps and data may be limited by various factors, including the scale of the maps, the timeliness and accuracy of the underlying information, the availability of more accurate and the presence or absence of ground truthing or peer review of the underlying information contained in such maps and other graphic information. All Data created and/or reviewed by the ECFRPC.

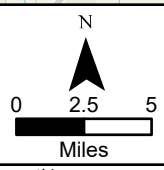


Lake County FNAI Assessment

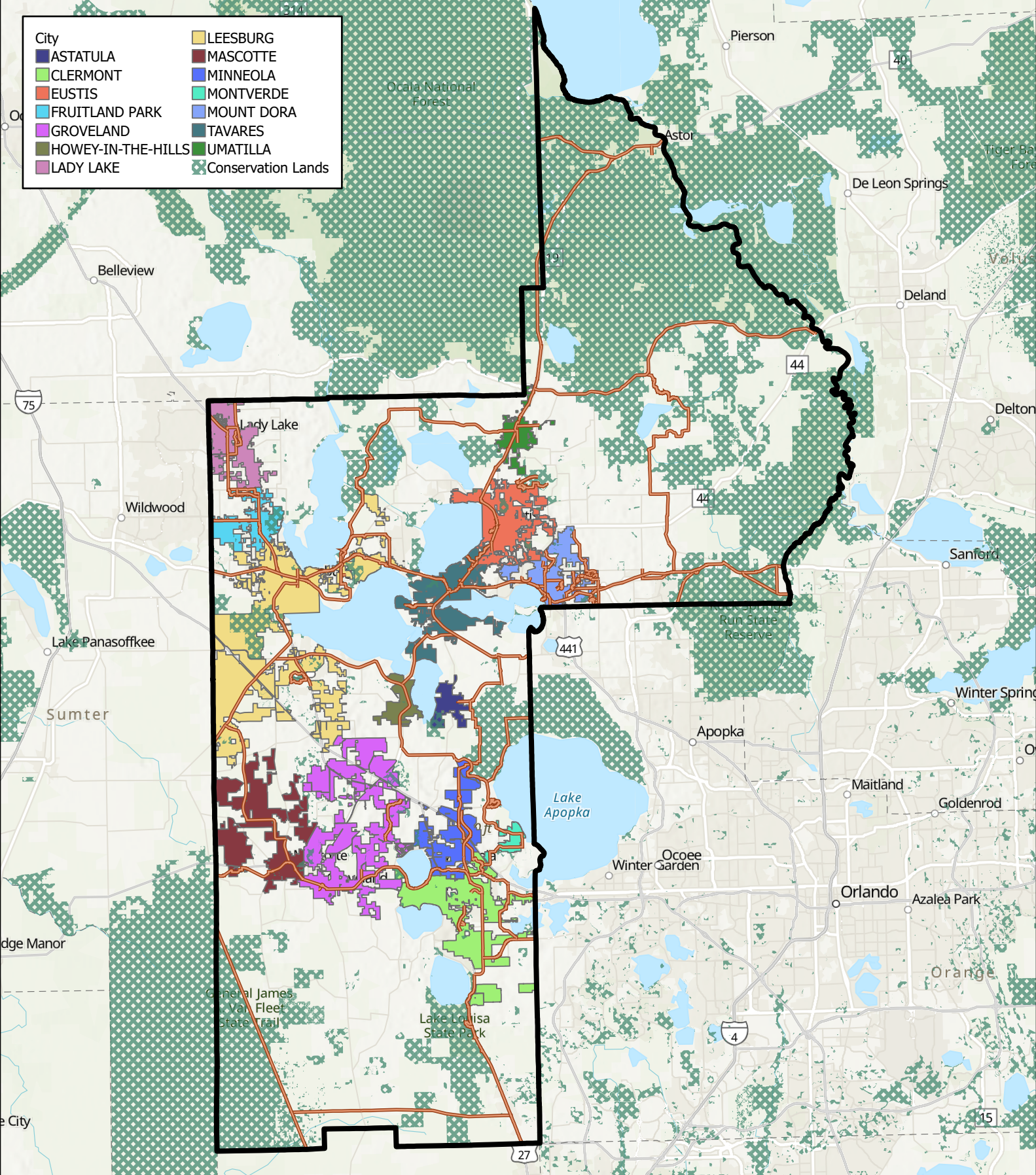
Sustainable Forestry

- Priority 1 - HIGHEST
- Priority 2

- Priority 3
- Priority 5
- Lake County Boundary



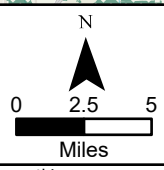
This map is intended to be used for planning purposes only and is not to be construed as a legal document. The GIS data available on this map may need field verification as it corresponds to regional scale representation. 186.803 Use of geographic information by governmental entities.--When state agencies, water management districts, regional planning councils, local governments, and other governmental entities use maps, including geographic information maps and other graphic information materials, as the source of data for planning or any other purposes, they must take into account that the accuracy and reliability of such maps and data may be limited by various factors, including the scale of the maps, the timeliness and accuracy of the underlying information, the availability of more accurate and the presence or absence of ground truthing or peer review of the underlying information contained in such maps and other graphic information. All Data created and/or reviewed by the ECFRPC.



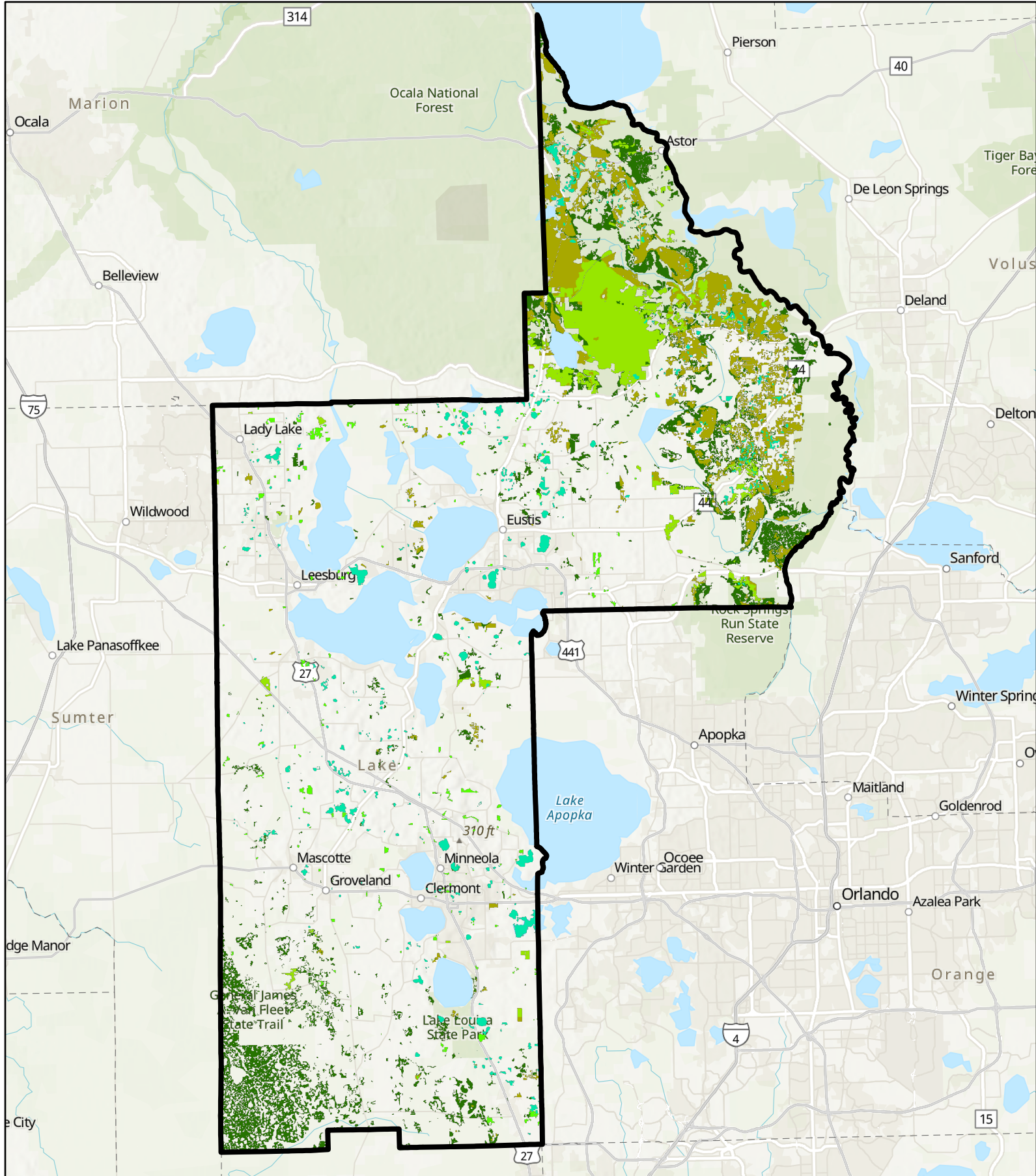
City	LEESBURG
ASTATULA	MASCOTTE
CLERMONT	MINNEOLA
EUSTIS	MONTVERDE
FRUITLAND PARK	MOUNT DORA
GROVELAND	TAVARES
HOWEY-IN-THE-HILLS	UMATILLA
LADY LAKE	Conservation Lands

Lake County Trails & Conservation

- Trails
- Lake County Boundary
- Conservation Lands



This map is intended to be used for planning purposes only and is not to be construed as a legal document. The GIS data available on this map may need field verification as it corresponds to regional scale representation. 186.803 Use of geographic information by governmental entities.--When state agencies, water management districts, regional planning councils, local governments, and other governmental entities use maps, including geographic information maps and other graphic information materials, as the source of data for planning or any other purposes, they must take into account that the accuracy and reliability of such maps and data may be limited by various factors, including the scale of the maps, the timeliness and accuracy of the underlying information, the availability of more accurate and the presence or absence of ground truthing or peer review of the underlying information contained in such maps and other graphic information. All Data created and/or reviewed by the ECFRPC.

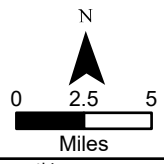


Lake County FNAI Assessment

Under-Represented Ecosystems

- Pine Flatwoods (G4)
- Sandhill (G3)

- Sandhill Upland Lake (G3)
- Scrub and Scrubby Flatwoods (G2)
- Upland Hardwood Forest (G5)
- Lake County Boundary



This map is intended to be used for planning purposes only and is not to be construed as a legal document. The GIS data available on this map may need field verification as it corresponds to regional scale representation. 186.803 Use of geographic information by governmental entities.--When state agencies, water management districts, regional planning councils, local governments, and other governmental entities use maps, including geographic information maps and other graphic information materials, as the source of data for planning or any other purposes, they must take into account that the accuracy and reliability of such maps and data may be limited by various factors, including the scale of the maps, the timeliness and accuracy of the underlying information, the availability of more accurate and the presence or absence of ground truthing or peer review of the underlying information contained in such maps and other graphic information. All Data created and/or reviewed by the ECFRPC.