

Police Dept Functions



```
graph TD; A((Police Dept Functions)) --- B(Police Pension Board); A --- C(Police Dept.); C --- D1[Law Enforcement]; C --- D2[State Federal Reporting]; C --- D3[Law Enforcement Policy]; C --- D4[Police Dept. Records Request]; D1 --- E1[Police Vehicle Maintenance]; E1 --- F1[Grant Management]; F1 --- G1[Dept. Budgeting]; D2 --- E2[Investigations]; E2 --- F2[FDOT Liaison]; F2 --- G2[School Resource Officers]; D3 --- E3[Cost Recovery]; E3 --- F3[EOC: Operations Section Chief]; F3 --- G3[Town Events Support]; D4 --- E4[Police Department Social Media]; E4 --- F4[Mutual Aid]; F4 --- G4[Police Dept. Information Technology IT];
```

The diagram is an organizational chart for Police Department Functions. At the top is a large white circle with a grey ring, containing the text "Police Dept Functions". A line connects this circle to a green rounded rectangle on the left labeled "Police Pension Board". Another line connects the circle to an orange rounded rectangle in the center labeled "Police Dept.". From the "Police Dept." box, four lines branch out to four orange rounded rectangles: "Law Enforcement", "State Federal Reporting", "Law Enforcement Policy", and "Police Dept. Records Request". Each of these four boxes is connected by a vertical line to a second row of four orange rounded rectangles: "Police Vehicle Maintenance", "Investigations", "Cost Recovery", and "Police Department Social Media". Each of these four boxes is connected by a vertical line to a third row of four orange rounded rectangles: "Grant Management", "FDOT Liaison", "EOC: Operations Section Chief", and "Mutual Aid". Finally, each of these four boxes is connected by a vertical line to a fourth row of four orange rounded rectangles: "Dept. Budgeting", "School Resource Officers", "Town Events Support", and "Police Dept. Information Technology (IT)".

Police Pension Board

Police Dept.

Law Enforcement

State Federal Reporting

Law Enforcement Policy

Police Dept. Records Request

Police Vehicle Maintenance

Investigations

Cost Recovery

Police Department Social Media

Grant Management

FDOT Liaison

EOC: Operations Section Chief

Mutual Aid

Dept. Budgeting

School Resource Officers

Town Events Support

Police Dept. Information Technology (IT)

Library Functions

Library Boards and Groups

Town Library Board

County Library Advisory Board

Friends of the Library

Library Foundation

Library

Circulation

Collection Management

Grant Management

Dept. Budgeting

Adult Programming

Reference Desk

County/State Reporting

Volunteer Management

Liaison to County IT

Intralibrary Loan

LCLS Directors' Group

Town Events Support

Youth Programming

Marketing/ Library Social Media

LCLS User Experience Group

LCLS Youth Group

Public Works Functions



```
graph TD; PW[Public Works Functions] --- PRB[Parks & Recreation Board]; PW --- PW_Div[Public Works]; PW --- PU[Public Utilities]; PW_Div --- EOC[EOC: Logistics Section Chief]; PW_Div --- PM[Parks Maintenance]; PW_Div --- NDR[New Development Review & Inspections]; PW_Div --- RM[Roads Maintenance]; EOC --- WM[Wetlands Monitoring]; EOC --- CLL[Cemetery Lot Locating]; EOC --- GM[Grant Management]; PM --- FM[Facilities Maintenance]; PM --- FDR[FEMA & FDEP Reporting]; PM --- DB[Dept. Budgeting]; NDR --- LI[Landscape & Irrigation Inspections]; NDR --- ROW[Right-of-Way (ROW) & Lakefront Maintenance]; NDR --- VM[Vehicle Maintenance]; RM --- SML[Stormwater Maintenance & NPDES]; RM --- WWSL[Wastewater Line & Lift Station Maintenance]; RM --- TES[Town Events Support]; PU --- WPM[Well and Plant Maintenance]; WPM --- CUP[Consumptive Use Permit]; CUP --- WMaint[Waterline Maintenance]; WMaint --- UBSO[Utility Billing Service Orders];
```

The diagram is an organizational chart for 'Public Works Functions'. At the top is a large white circle with the title 'Public Works Functions' surrounded by a grey ring. Three lines descend from this circle to three main functional areas: 'Parks & Recreation Board' (a green rounded rectangle on the left), 'Public Works' (an orange rounded rectangle in the center), and 'Public Utilities' (a brown rounded rectangle on the right). Each of these three areas has a vertical column of sub-functions below it, connected by lines. The 'Parks & Recreation Board' column includes 'EOC: Logistics Section Chief', 'Wetlands Monitoring', 'Cemetery Lot Locating', and 'Grant Management'. The 'Public Works' column branches into four sub-columns: 'Parks Maintenance' (Facilities Maintenance, FEMA & FDEP Reporting, Dept. Budgeting), 'New Development Review & Inspections' (Landscape & Irrigation Inspections, Right-of-Way (ROW) & Lakefront Maintenance, Vehicle Maintenance), 'Roads Maintenance' (Stormwater Maintenance & NPDES, Wastewater Line & Lift Station Maintenance, Town Events Support), and 'Public Utilities' (Well and Plant Maintenance, Consumptive Use Permit, Waterline Maintenance, Utility Billing Service Orders).

Parks & Recreation Board

EOC: Logistics
Section Chief

Wetlands
Monitoring

Cemetery Lot
Locating

Grant
Management

Parks
Maintenance

Facilities
Maintenance

FEMA & FDEP
Reporting

Dept. Budgeting

New Development
Review &
Inspections

Landscape &
Irrigation
Inspections

Right-of-Way (ROW) &
Lakefront Maintenance

Vehicle
Maintenance

Roads
Maintenance

Stormwater
Maintenance &
NPDES

Wastewater Line
& Lift Station
Maintenance

Town Events
Support

Public Utilities

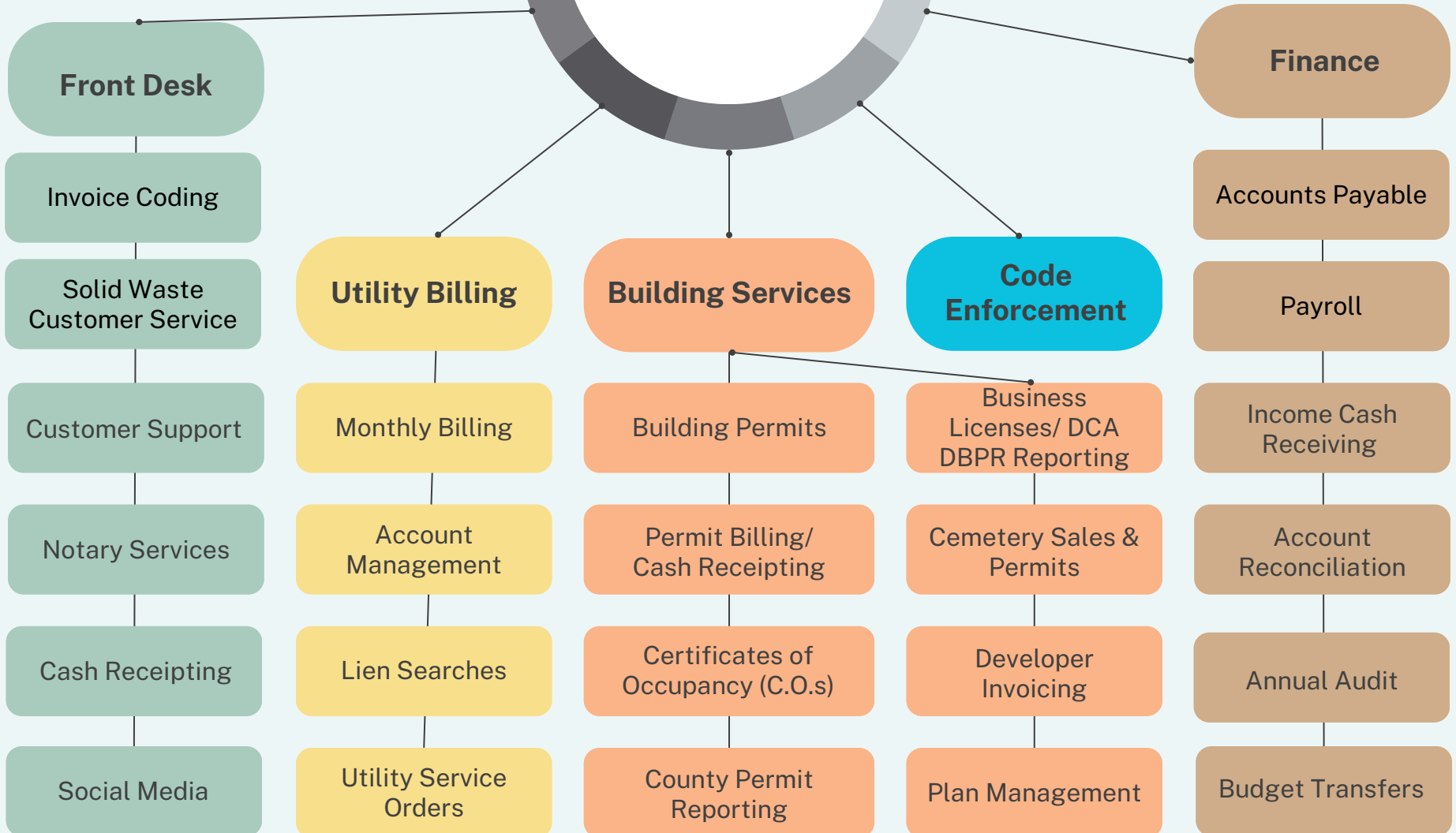
Well and Plant
Maintenance

Consumptive Use
Permit

Waterline
Maintenance

Utility Billing
Service Orders

Town Hall Functions



Admin Functions

Boards and Groups

Town Council

Planning & Zoning Board

Events Committee

Historical Committee

Legal Ads & Notices

TRIM Management

Planning & Zoning Oversight

Agendas & Minutes

Ordinances & Resolutions

Liens

Grant Management

Dept. Budgeting

Human Resources

Insurance and Employee Benefits

Workers' Comp. & Unemployment

County/State Reporting

Public Records Request

EOC: Planning Section Chief

Election Qualifying Officer

Records Management

Information Technology (IT)

Town Events Support

Town Clerk

Town Manager

Chief Executive Officer

Department Supervision

Budget

Procurement

Hiring & Firing

Public Information Officer

EOC: Incident Commander