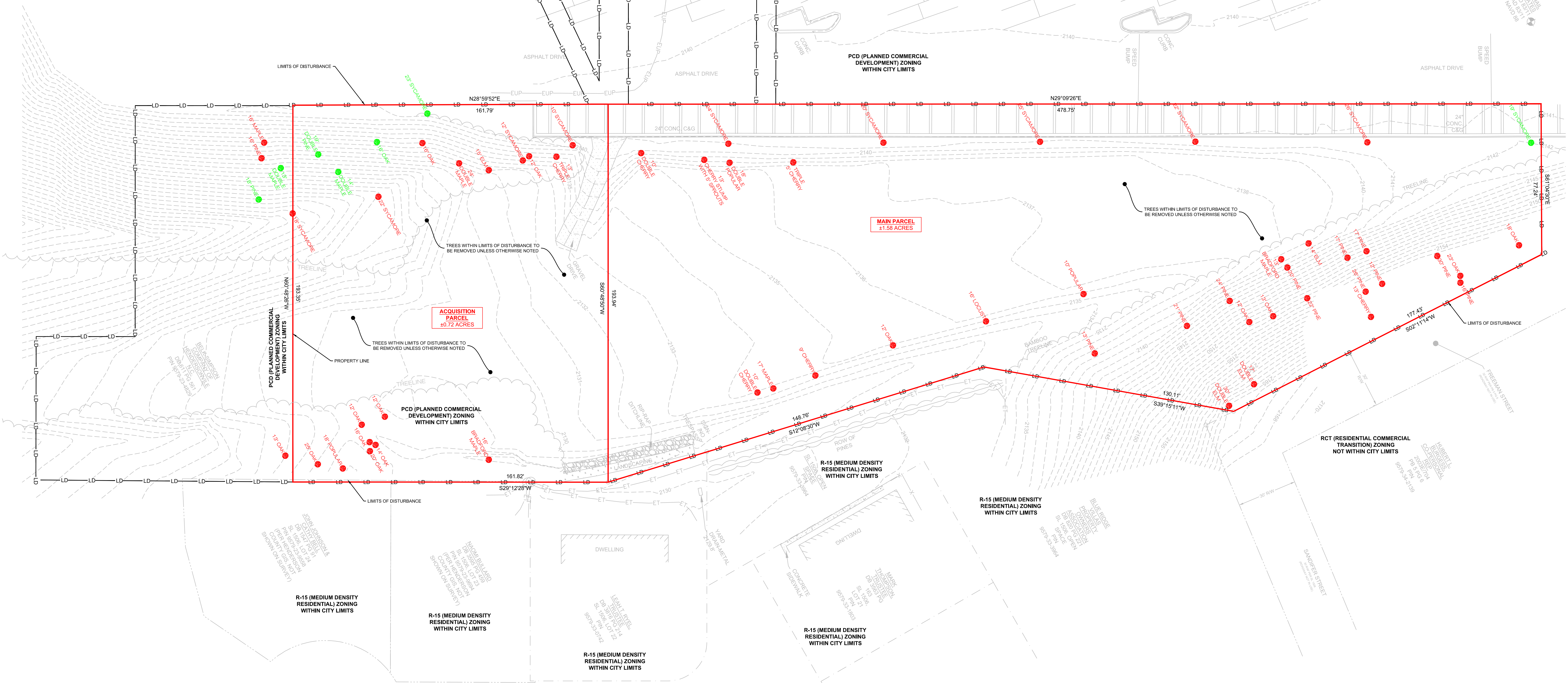
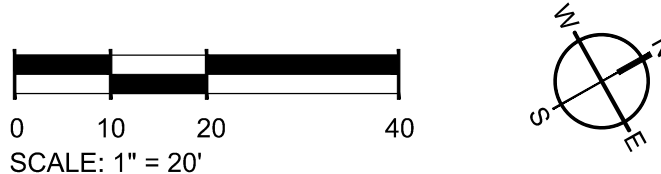


**TREE LEGEND:**

- PROPOSED TREE TO REMAIN
- PROPOSED TREE TO BE REMOVED

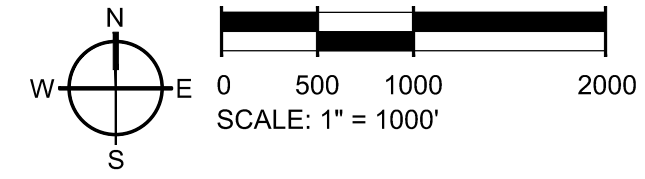
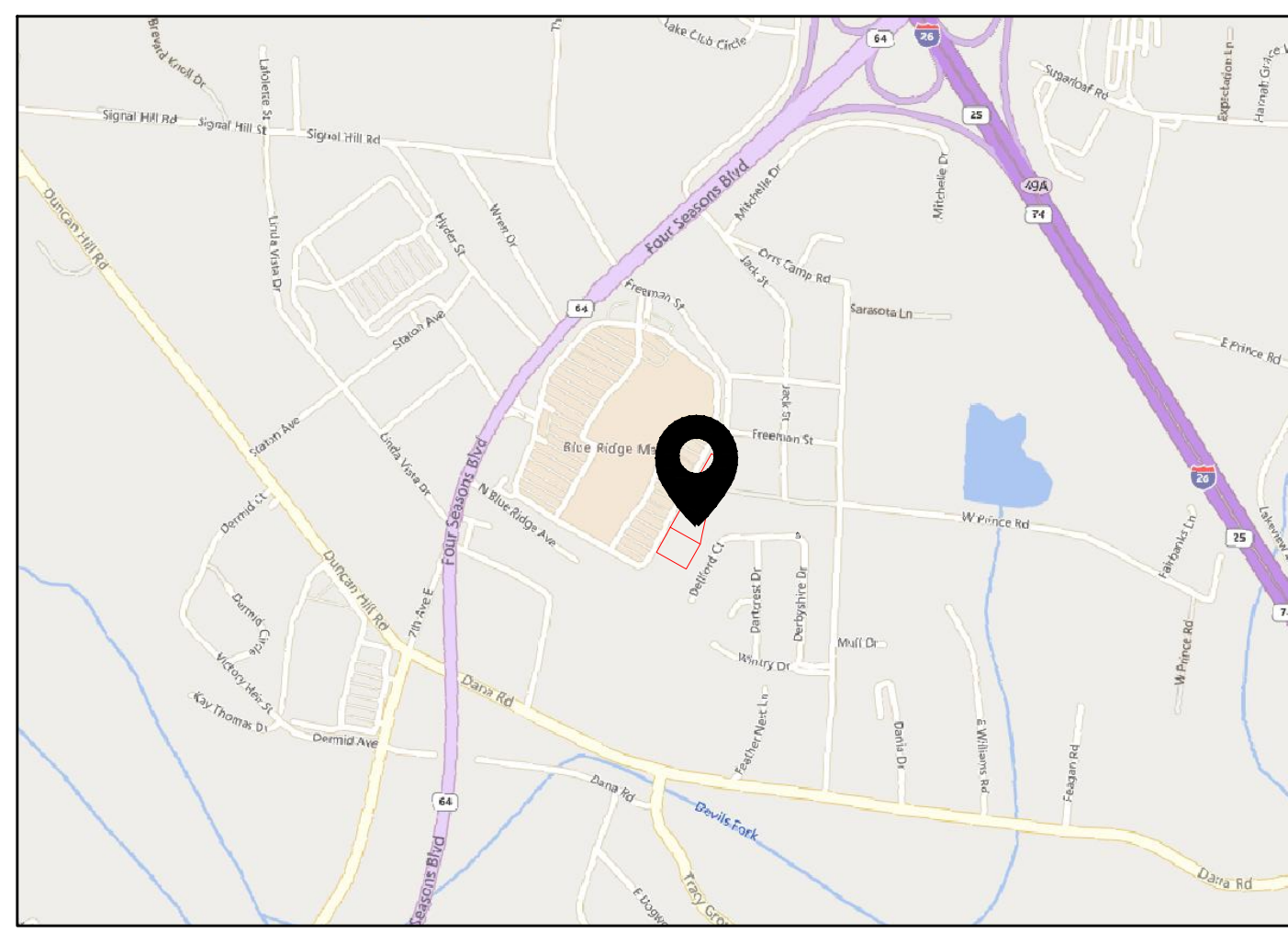


NOTE: THIS PLAN IS CONCEPTUAL IN NATURE AND SUBJECT TO CHANGE

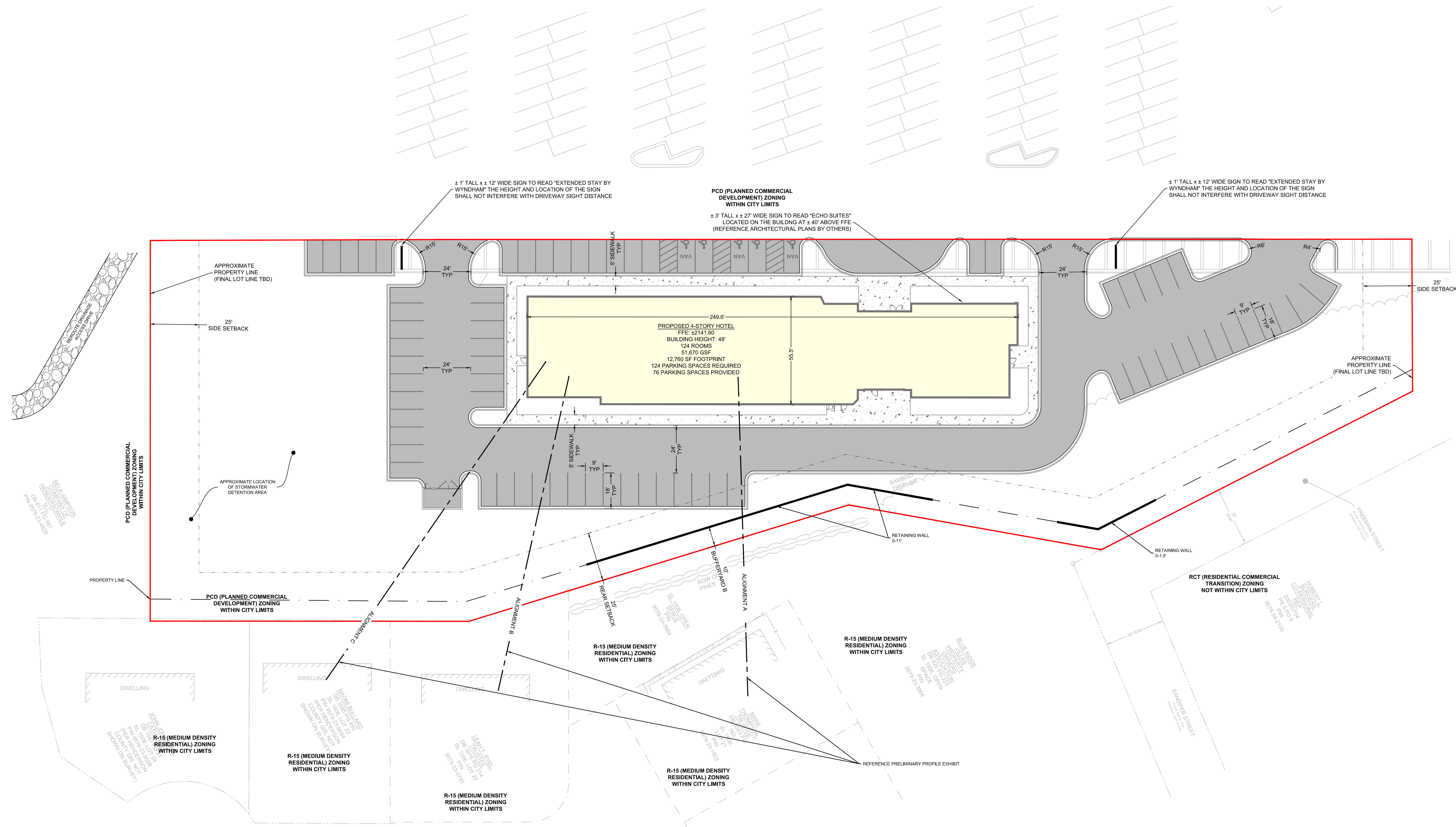


**PRELIMINARY SURVEY**  
HENDERSONVILLE HOTEL  
HENDERSONVILLE, NC  
02/27/24

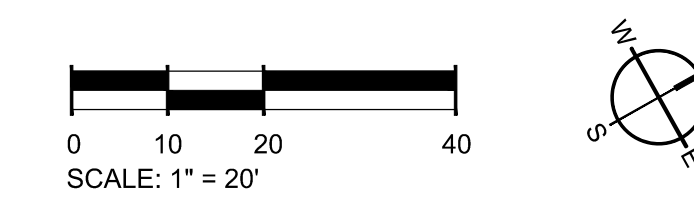




CITY PLANNING AND ZONING INFORMATION:	
PROJECT NAME:	HENDERSONVILLE HOTEL
ENGINEER:	SEAMON, WHITESIDE & ASSOCIATES, INC.
ARCHITECT:	BRR ARCHITECTURE, INC.
LANDSCAPE ARCHITECT:	SEAMON, WHITESIDE & ASSOCIATES, INC.
SURVEYOR:	COLE SURVEYING & DESIGN, PA
DEVELOPER:	MITCH COX COMPANIES
OWNER OF RECORD:	BLUE RIDGE MALL, LLC
PROJECT ZONING:	PCD (PLANNED COMMERCIAL DEVELOPMENT) per City of Hendersonville Zoning Map
PARKING REQUIRED:	1 SPACE PER GUEST ROOM X 124 ROOMS = 124 PARKING SPACES REQUIRED
PARKING PROVIDED:	76 SPACES PROVIDED, REMAINDER OF PARKING SPACES TO BE PROVIDED BY THE EXISTING MALL
TOTAL PROJECT AREA:	± 2.30 AC (± 97,888 SF)
BUILDING AREA:	± 12,760 SF (± 13.0% COVERAGE)
STREETS & PARKING:	± 34,000 SF (± 34.7% COVERAGE)
COMMON OPEN SPACE:	± 12,700 SF (± 13.0% COVERAGE)

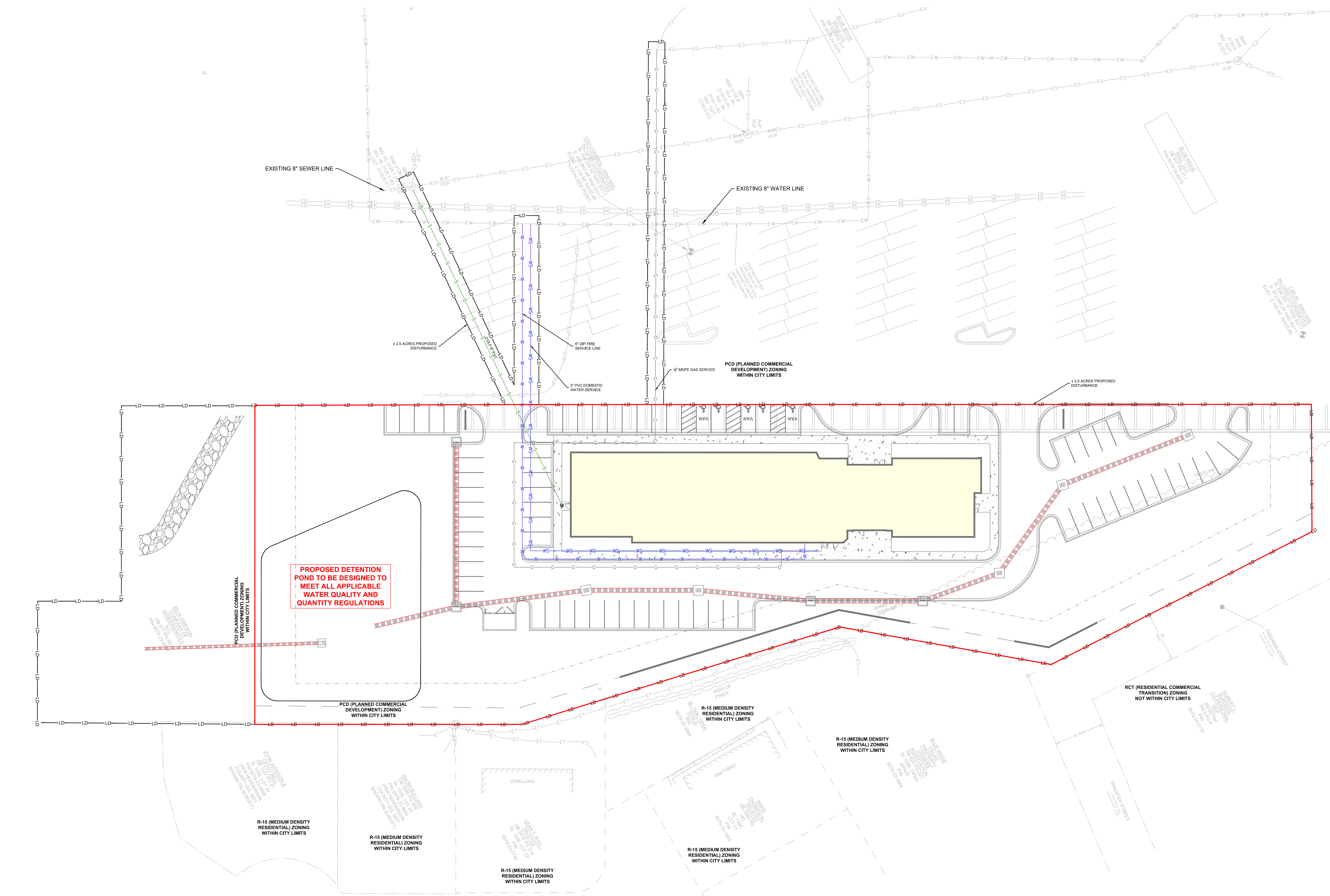


NOTE: THIS PLAN IS CONCEPTUAL IN NATURE AND SUBJECT TO CHANGE

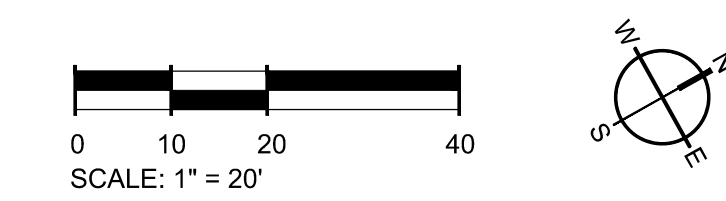


**PRELIMINARY SITE PLAN**  
 HENDERSONVILLE HOTEL  
 HENDERSONVILLE, NC  
 02/27/24





NOTE: THIS PLAN IS CONCEPTUAL IN NATURE AND SUBJECT TO CHANGE

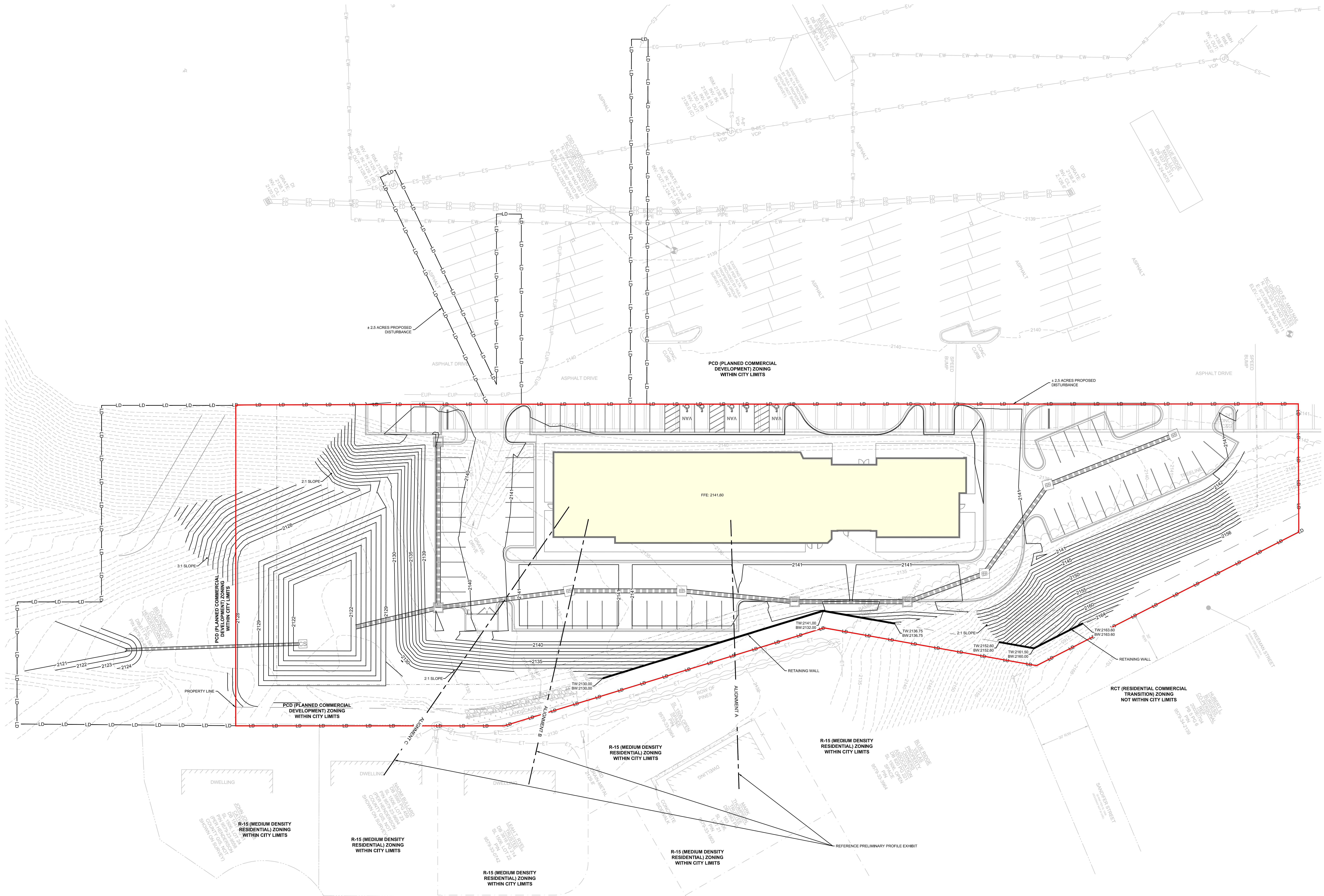


**PRELIMINARY UTILITY PLAN**  
 HENDERSONVILLE HOTEL  
 HENDERSONVILLE, NC  
 02/27/24

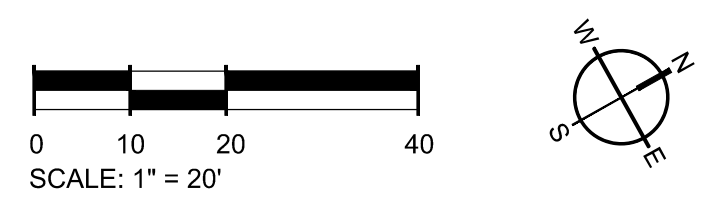






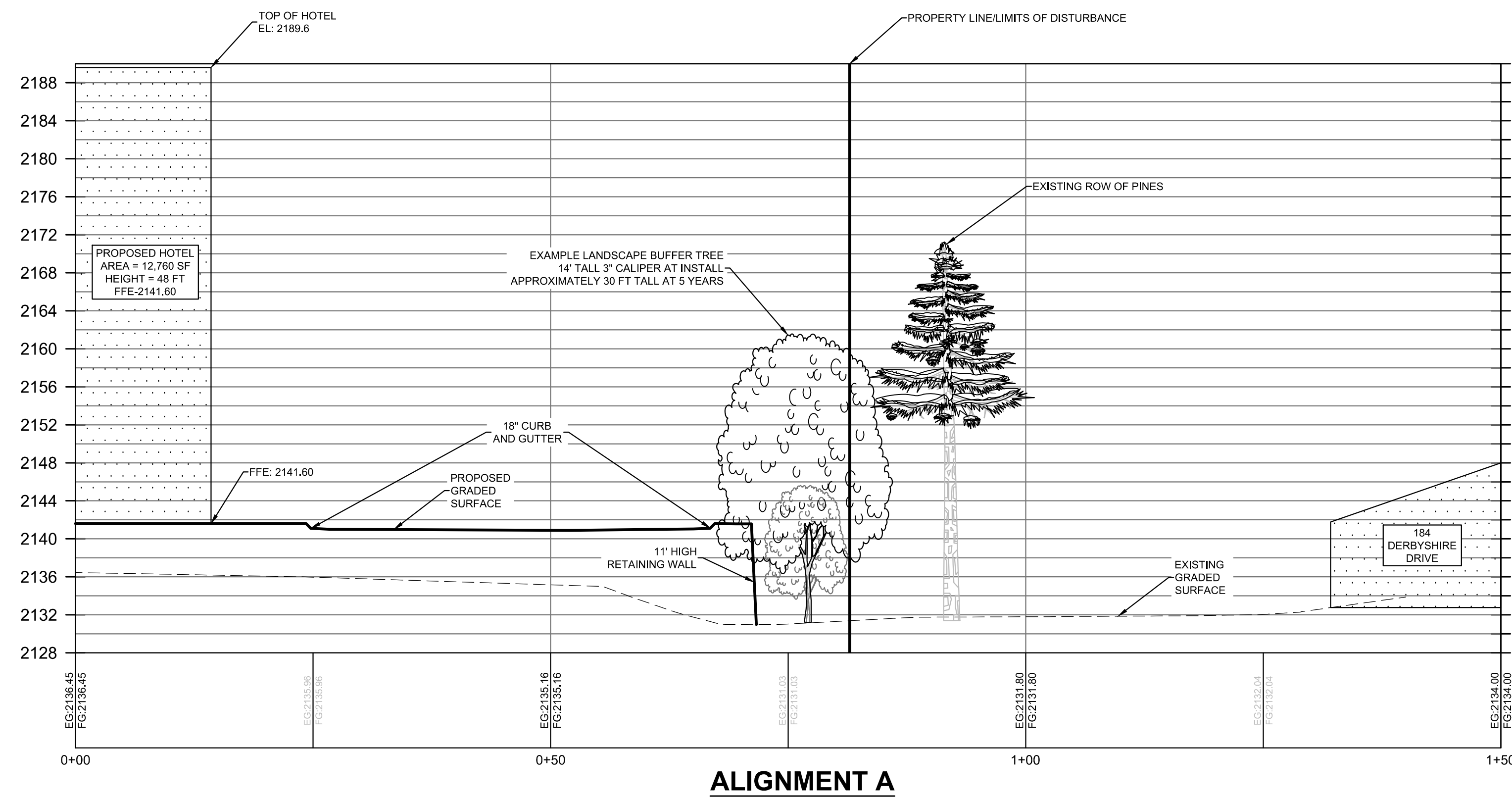


NOTE: THIS PLAN IS CONCEPTUAL IN NATURE AND SUBJECT TO CHANGE

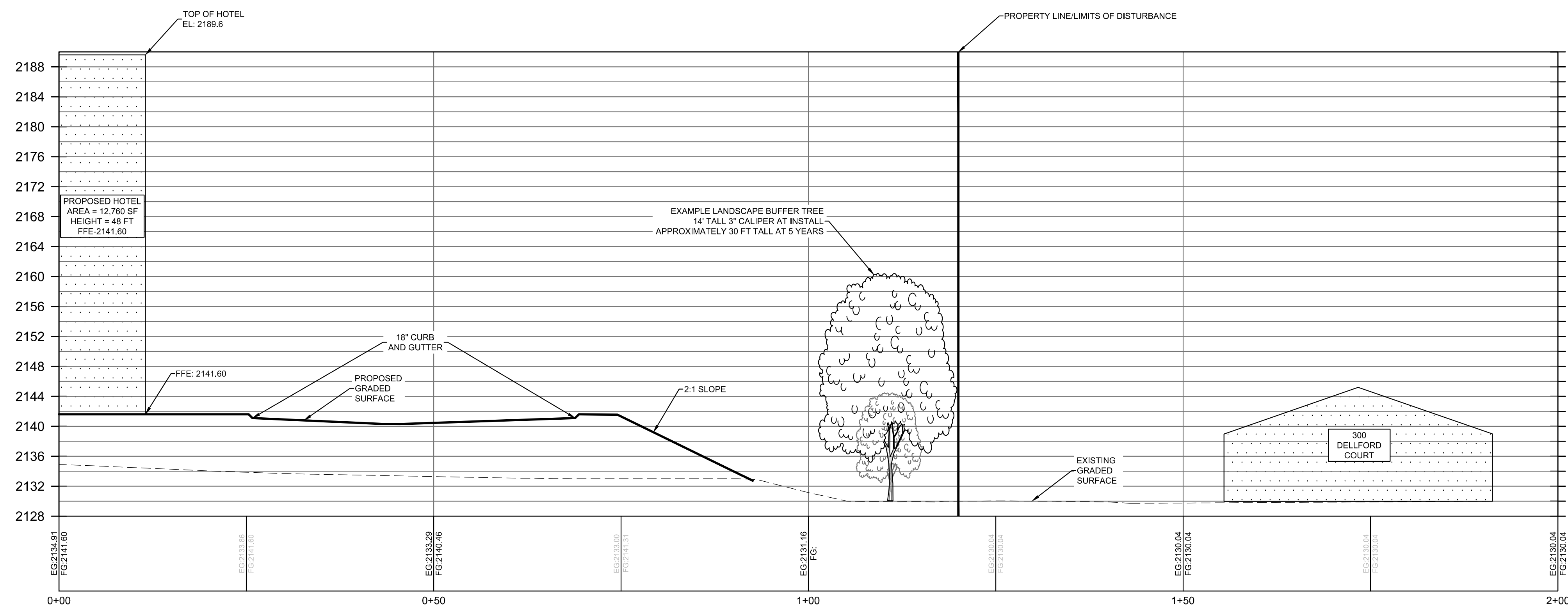


**PRELIMINARY GRADING PLAN**  
 HENDERSONVILLE HOTEL  
 HENDERSONVILLE, NC  
 02/27/24

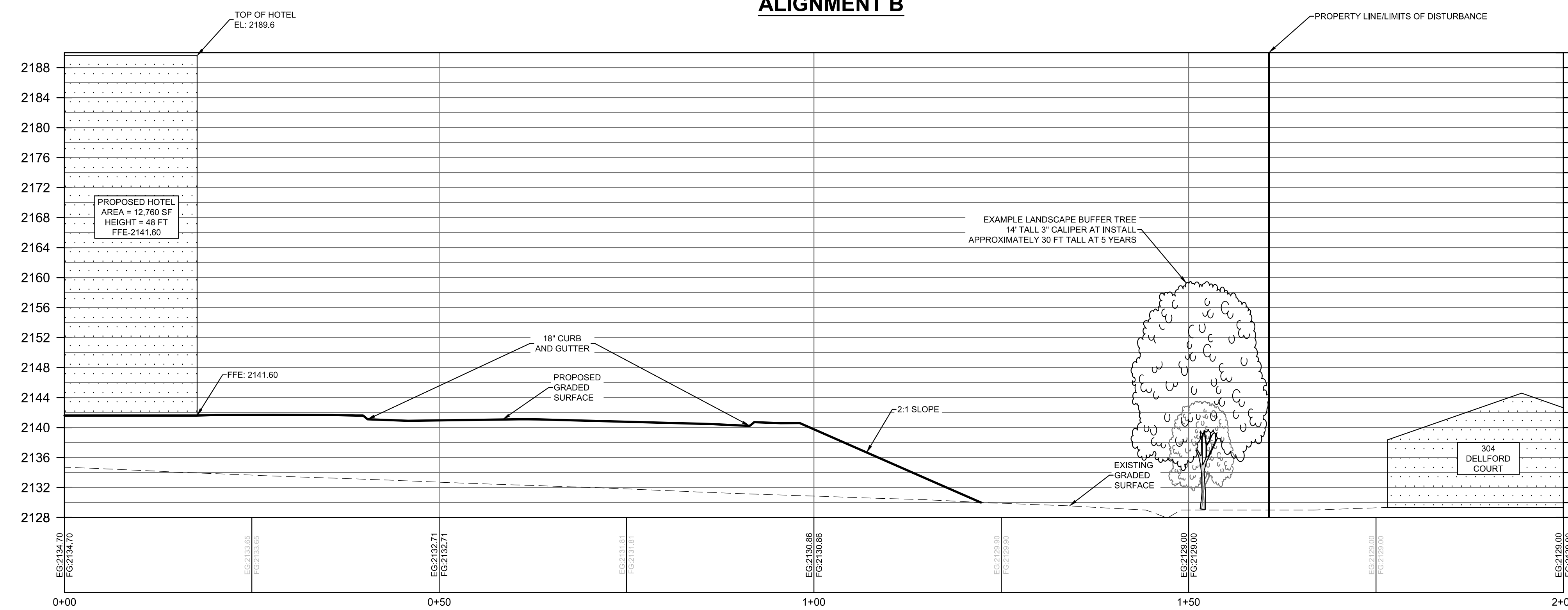




ALIGNMENT A



ALIGNMENT B



ALIGNMENT C

NOTE: THIS PLAN IS CONCEPTUAL IN NATURE AND SUBJECT TO CHANGE

