

1202 Greenville Hwy (+/- 6.7 Ac)

Jurisdictional wetlands and waters identified on this map have been located within sub-meter accuracy utilizing a Trimble mapping grade Global Positioning System (GPS) and the subsequent differential correction of that data. GPS points may demonstrate uncorrectable errors due to topography, vegetative cover, and/or multipath signal error.

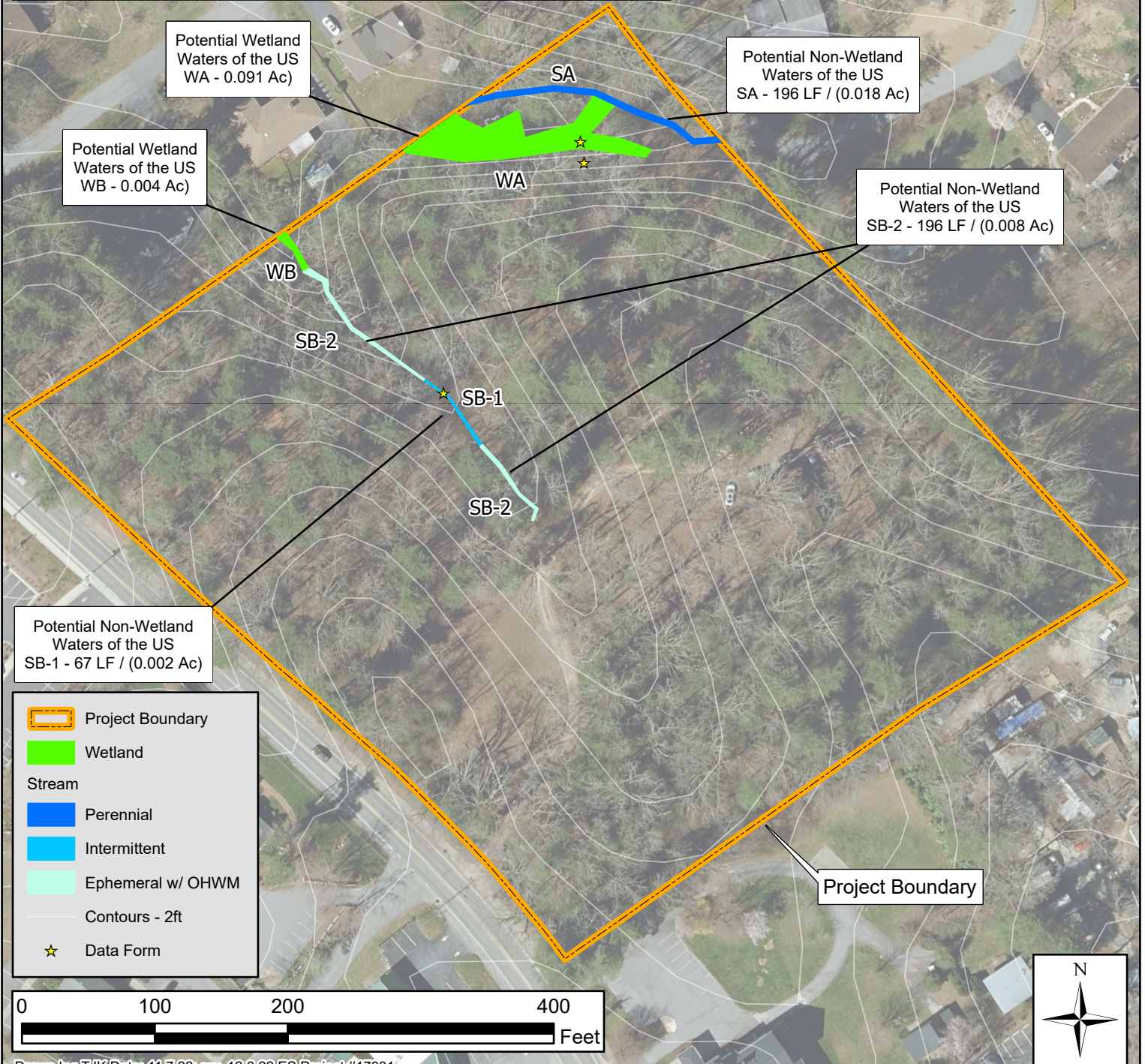
Note: The illustrated wetland and stream locations are approximate. These areas have been flagged in the field; however, they have not been surveyed. Although ClearWater Environmental Consultants, Inc. (ClearWater) is confident in our assessment, the US Army Corps of Engineers (Corps) is the only agency that can make final decisions regarding jurisdictional wetland and waters of the US delineations. Therefore, all preliminary determinations are subject to change until written verification is obtained. ClearWater strongly recommends that written verification be obtained from the Corps prior to closing on the property, beginning any site work, or making any legal reliance on this determination.

This map was prepared by ClearWater using the best information available to ClearWater at the time of production. This map is for informational purposes only and should not be used to determine precise boundaries, roadways, property boundary lines, nor legal descriptions. This map shall not be construed to be an official survey of any data depicted.

Source Data: Parcel Boundary - Henderson Co. GIS Parcels; Contours & Aerial Imagery - NC OneMap

Potentially Jurisdictional Waters of the US

Stream			Wetland	
	Linear Feet	Acres (Stream bed)		Acres
SA	196	0.018	WA	0.091
SB-1 (INT)	67	0.002	WB	0.004
SB-2 (EMP)	196	0.008		
Total	459	0.028	Total	0.095



Drawn by: TJK Date: 11.7.22; rev. 12.6.22 ES Project #17031

Henderson County,
North Carolina

ClearWater
An EnviroScience Company
145 7th Ave West, Suite B
Hendersonville, North Carolina 28792

Wetland and Stream Map
Delineated Oct. 24, 2022
Figure 5