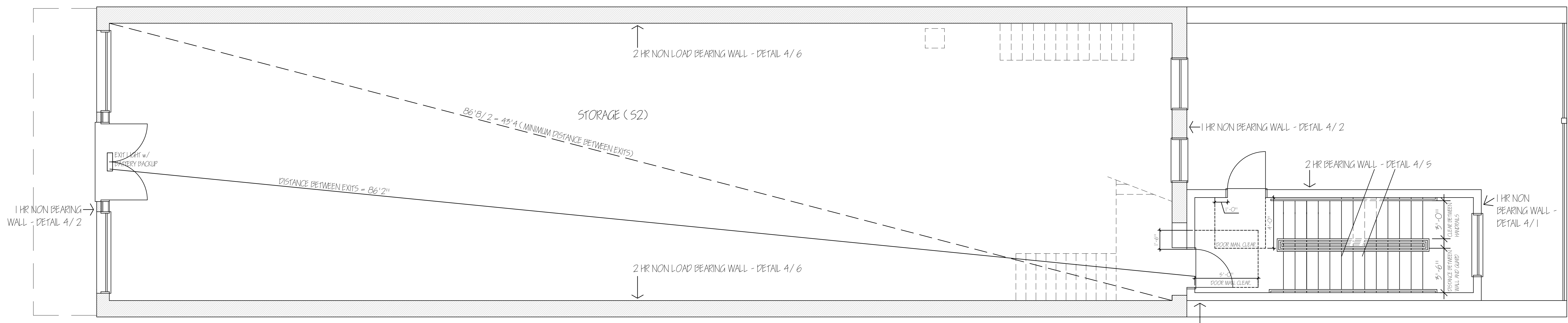


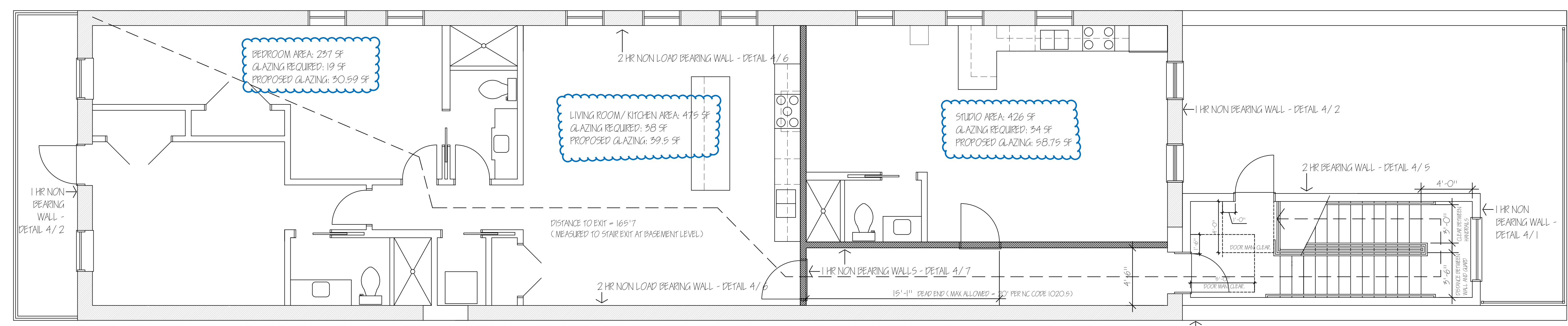
BASEMENT PLAN - LIFE SAFETY
S2 OCCUPANCY (STORAGE, 300 GROSS) 1816 SF / 300 = 7 OCCUPANTS
PLUMBING REQUIREMENTS: IT + 15 + 1 SERVICE SINK (DRINKING FOUNTAIN NOT REQUIRED IF LESS THAN 30 OCCUPANTS)

SCALE 1/4" = 1'-0"



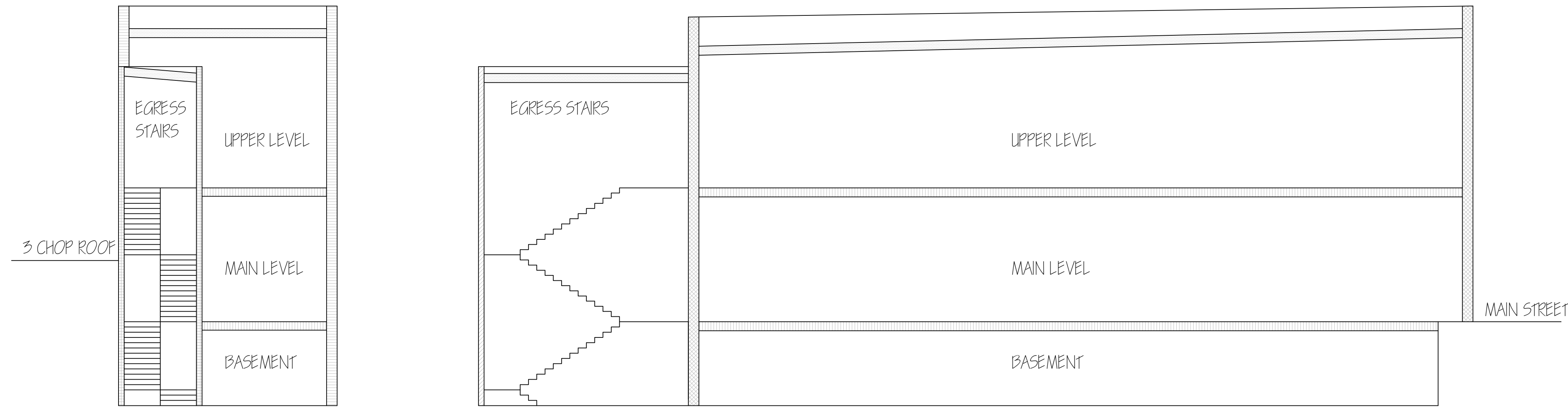
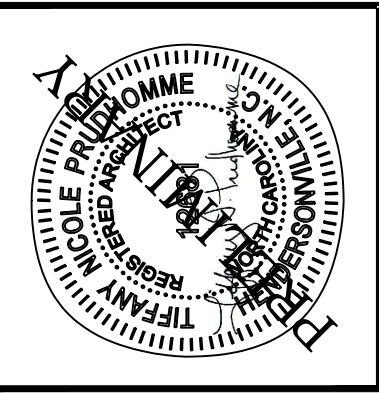
MAIN LEVEL PLAN - LIFE SAFETY PLAN
1828 SF, S-2 OCCUPANCY (STORAGE, 300 GROSS); 7 OCCUPANTS
PLUMBING REQUIREMENTS: IT + 15 + 1 SERVICE SINK (DRINKING FOUNTAIN NOT REQUIRED IF LESS THAN 30 OCCUPANTS)

SCALE 1/4" = 1'-0"



UPPER LEVEL PLAN - LIFE SAFETY PLAN
R3 - 10 OCCUPANTS MAX

SCALE 1/4" = 1'-0"



SCHEMATIC TRANSVERSE SECTION - NOT TO SCALE
FIRE RESISTANT ASSEMBLIES; ALL STRUCTURE BY ENGINEER
REFER TO LIFE SAFETY PLAN FOR ADDITIONAL FIRE RATED ASSEMBLY LOCATIONS

- LEGEND:**
- 2 HOUR WALL (LOAD BEARING; NEW METAL STUDS; DETAIL 4/5)
 - 2 HOUR WALL (NON LOAD BEARING; EXISTING BRICK WALL; DETAIL 4/6)
 - 2 HOUR FLOOR ASSEMBLY (DETAIL 4/3)
 - 1 HOUR CEILING ASSEMBLY (DETAIL 4/4)

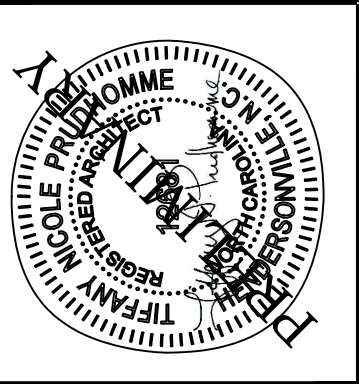
SCHEMATIC LONGITUDINAL SECTION - NOT TO SCALE
FIRE RESISTANT ASSEMBLIES; ALL STRUCTURE BY ENGINEER
REFER TO LIFE SAFETY PLAN FOR ADDITIONAL FIRE RATED ASSEMBLY LOCATIONS

- LEGEND:**
- 1 HOUR WALL (NON LOAD BEARING; NEW METAL STUDS; DETAIL 4/1)
 - 1 HOUR WALL (NON LOAD BEARING; EXISTING BRICK AND NEW METAL STUDS; DETAIL 4/2)
 - 2 HOUR FLOOR ASSEMBLY (DETAIL 4/3)
 - 1 HOUR CEILING ASSEMBLY (DETAIL 4/4)

MK	W	H	TRANSOM W	TRANSOM H	T	FIRE RATING	DESCRIPTION	DR FIN	FR FIN	HARDWARE	REMARKS
1	3-6	7-0			1-3/4	3/4 HR	FULL GLASS w/ DIVISIONS	PAINT	PAINT	INTEGRAL w/ DB	DOOR FIRE RATING INFO REFERENCED FROM TABLE 716.(K.2)
2	3-0	8-0			"	1 1/2 HR	3 PANEL	"	"	"	
3	"	6-8			1-3/8	"	"	"	"	STORAGE	
4	6-0	8-0	5-10	4-0	1-3/4	3/4 HR	FULL GLASS STOREFRONT	"	"	ENTRANCE w/ DB	FIRE RATING APPLIES TO TRANSOM
5	3-0	"	3-0	2-5	1-3/8	"	FULL GLASS w/ DIVISIONS	"	"	INTEGRAL w/ DB	"
6	5-0	"	"	"	"	"	DOUBLE 3 PANEL	"	"	ONE-SIDED DUMMY	
7	2-8	"	"	"	"	"	3 PANEL POCKET	"	"	PRIVACY	
8	"	"	"	"	"	"	3 PANEL	"	"	"	
9	3-0	"	"	"	"	"	3 PANEL POCKET	"	"	PASSAGE	
10	4-0	"	"	"	"	"	DOUBLE 3 PANEL	"	"	ONE-SIDED DUMMY	
11	3-0	"	"	"	1-3/4	1/3 HR	3 PANEL	"	"	ENTRANCE w/ DB	
12	"	"	"	"	"	"	"	"	"	INTEGRAL w/ DB	
A	4-3	5-1				3/4 HR	FIXED SINGLE w/ DIVISIONS	EXT. CLAD	EXT. CLAD		CONFIGURATION AS SHOWN IN ELEVATION
B	5-0	"				"	"	"	"		"
C	4-3	"	4-3	2-0		"	"	"	"		"
D	5-0	4-2				"	"	"	"		"
E	6-1	6-10	6-1	4-0		"	FIXED STOREFRONT w/ DIVISIONS	"	"		"
F	3-0	5-6	3-0	2-0		"	DOUBLE-HUNG SINGLE w/ DIVISIONS	"	"		"
G	5-0	7-6				"	FIXED SINGLE w/ DIVISIONS	"	"		"
H	3-0	4-0				1 1/2 HR	"	"	"		" ; FIELD VERIFY WINDOW BEARING HEIGHT
I	"	4-0	2-0			"	"	"	"		" ; FIELD VERIFY WINDOW BEARING HEIGHT
J	"	3-0				"	"	"	"		" ; FIELD VERIFY WINDOW BEARING HEIGHT
K	3-2	5-3	3-2	2-5		3/4 HR	DOUBLE-HUNG SINGLE w/ DIVISIONS	"	"		"
L	3-6	5-1	3-6	2-0		3/4 HR	FIXED SINGLE w/ DIVISIONS	"	"		"
WINDOW FIRE RATING INFO REFERENCED FROM TABLE 716.(K.3)											
VERIFY TOP OF WINDOW HEIGHT - MUST BE FIELD VERIFIED											
VERIFY FINAL GLASS SIZE FOR FIRE RATED DOORS											
REFER TO ENGINEERING FOR STRUCTURE											
REFER TO ELEVATIONS FOR WINDOW/ DOOR DIVISIONS											
**CONFIRM ALL EXISTING OPENINGS ON-SITE											

DOORS / WINDOWS

102 MARCH 2026



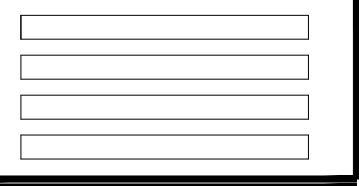
**PRUDHOMME
DESIGN &
INTERIORS**

AIA - 521 WETMUR STREET - HENDERSONVILLE, NORTH CAROLINA 28739
828.674.0273 - TIFANY@PRUDHOMMEDSIGN.COM

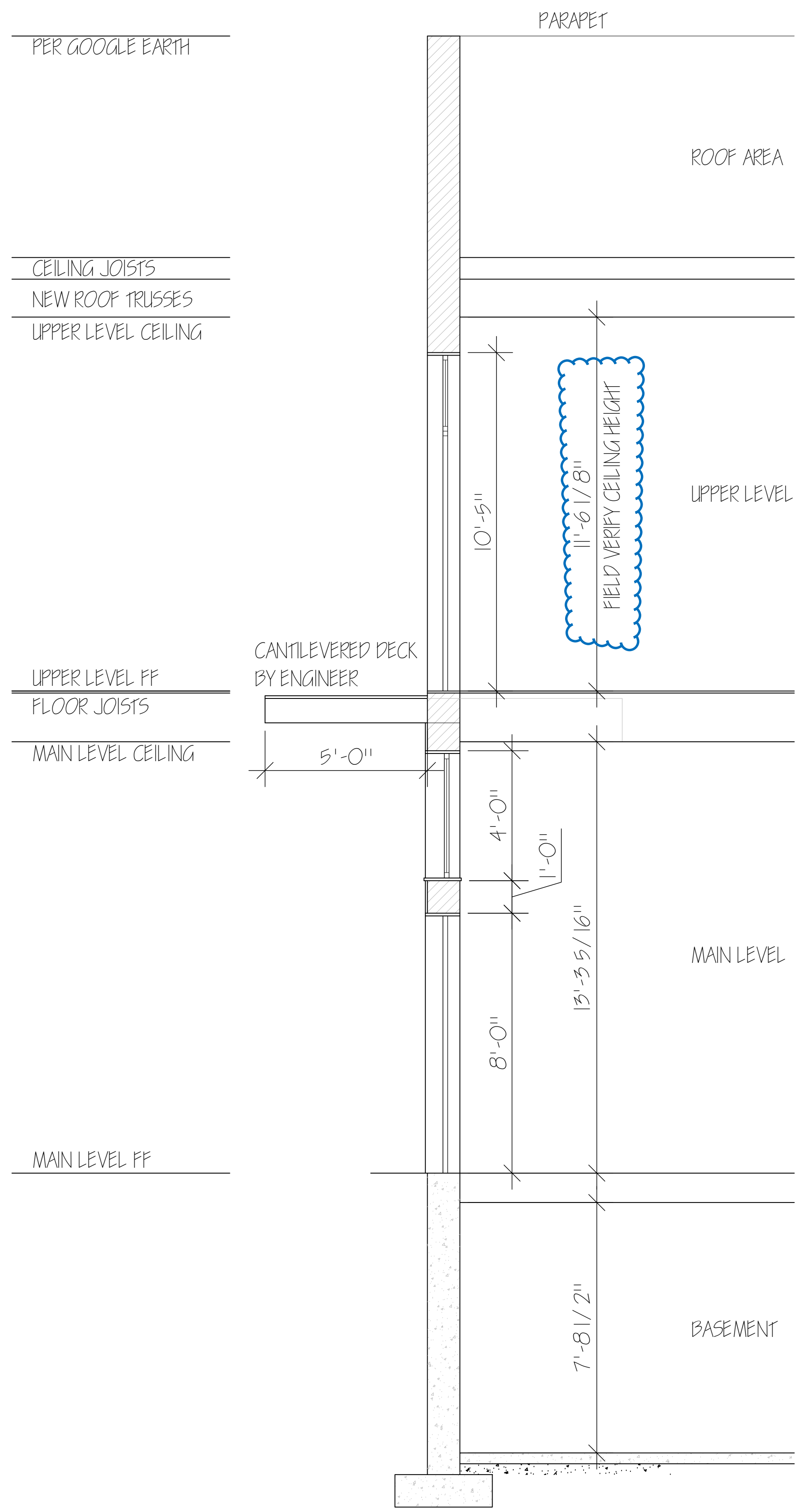
34 N. Main Street Renovation

RENOVATION FOR WMC INVESTMENT PROPERTIES
34 n. main street - hendersonville - north carolina

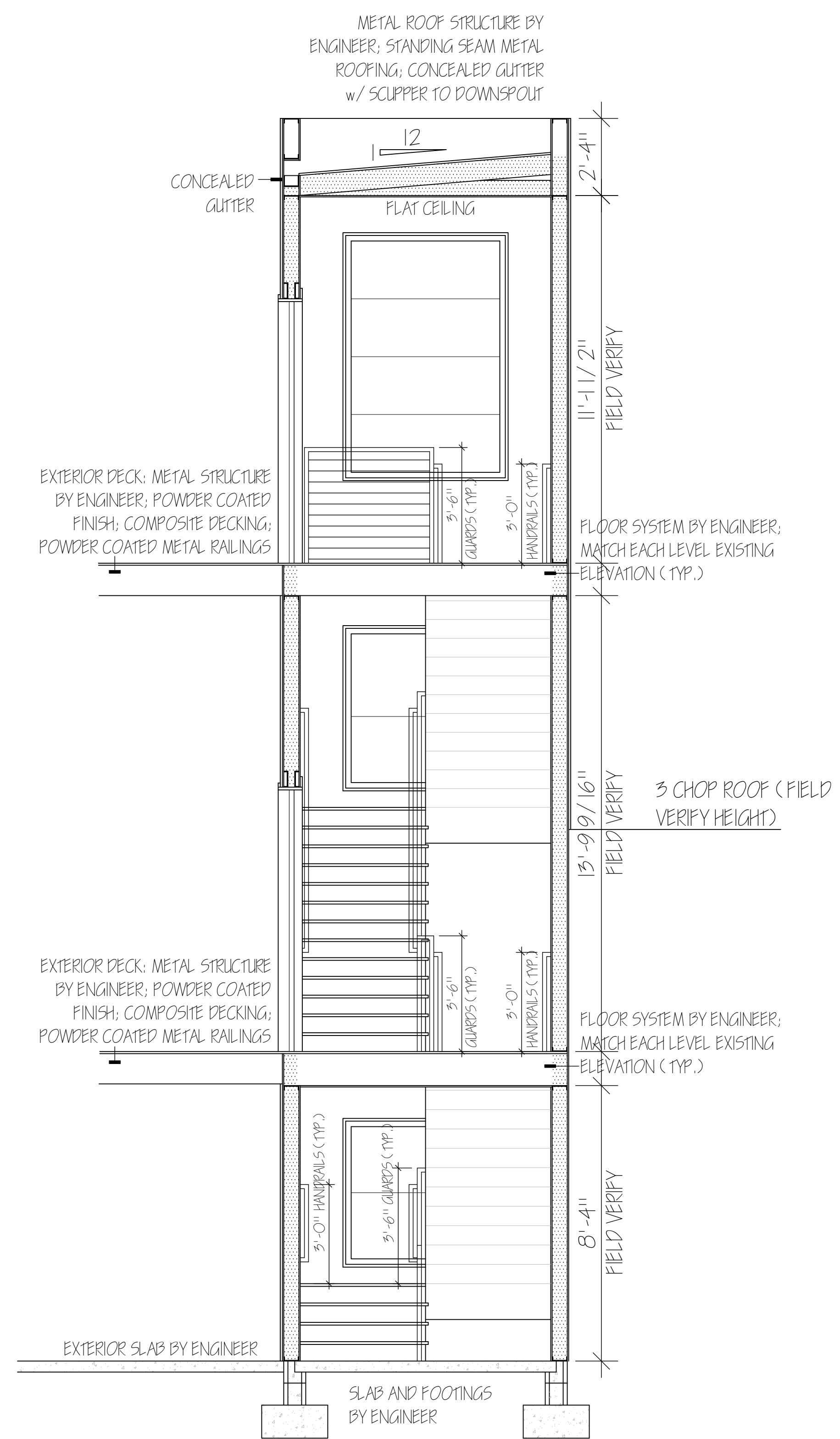
1027 MARCH 2026



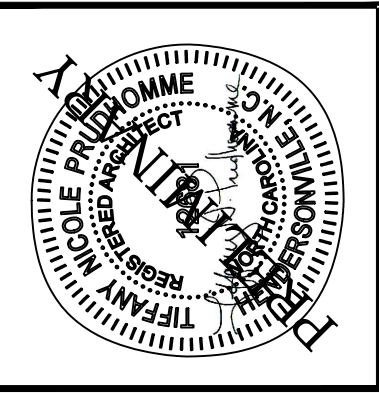
5



SCHMATIC WALL SECTION Y-Y SCALE 3/8" = 1'-0"
BUILDING FRONT - MAIN STREET



STAIR SECTION X-X SCALE 3/8" = 1'-0"

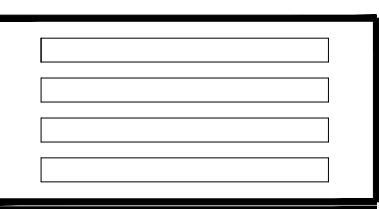


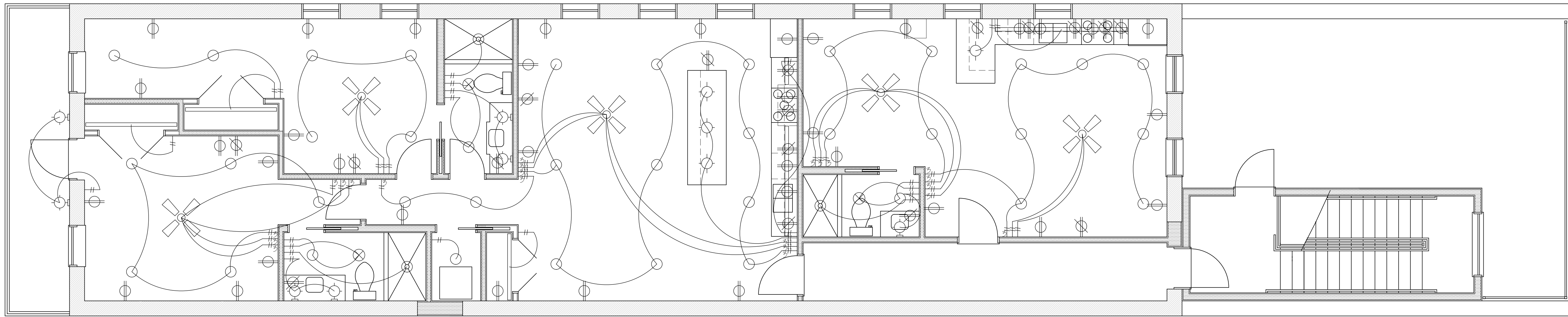
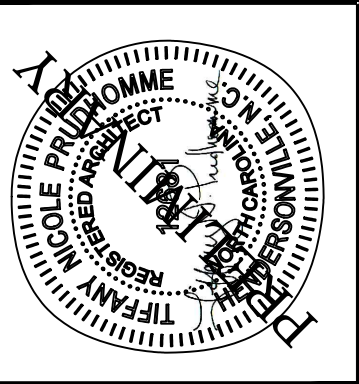
314 N. Main Street Renovation

RENOVATION FOR WMC INVESTMENT PROPERTIES

314 n. main street - hendersonville - north carolina

102 MARCH 2026





UPPER LEVEL PLAN - ELECTRICAL PLAN

SCALE 1/4" = 1'-0"

ELECTRICAL SYMBOLS LEGEND

- 120 vac DUPLEX OUTLET MTD. 12" aff
- 120 vac DUPLEX OUTLET MTD. ABOVE COUNTERTOP OR AT DESIGNATED HEIGHT
- 120 vac QUADRAPLEX OUTLET MTD. 12" aff
- 120 vac DUPLEX OUTLET MTD. FLUSH WITH FLOOR LOCATED AS DIRECTED
- WP 120 vac WEATHERPROOF DUPLEX OUTLET
- LIGHT SWITCH MTD. 48" aff
- RECESSED LIGHT 6"
- UNDERCABINET OR CLOSET LIGHT AS DIRECTED
- PENDANT OR SURFACED MOUNTED LIGHT
- BRACKET LIGHT MOUNTED AS DIRECTED
- RECESSED EXHAUST FAN/ LIGHT
- EXIT LIGHT w/ BATTERY BACKUP
- CEILING FAN