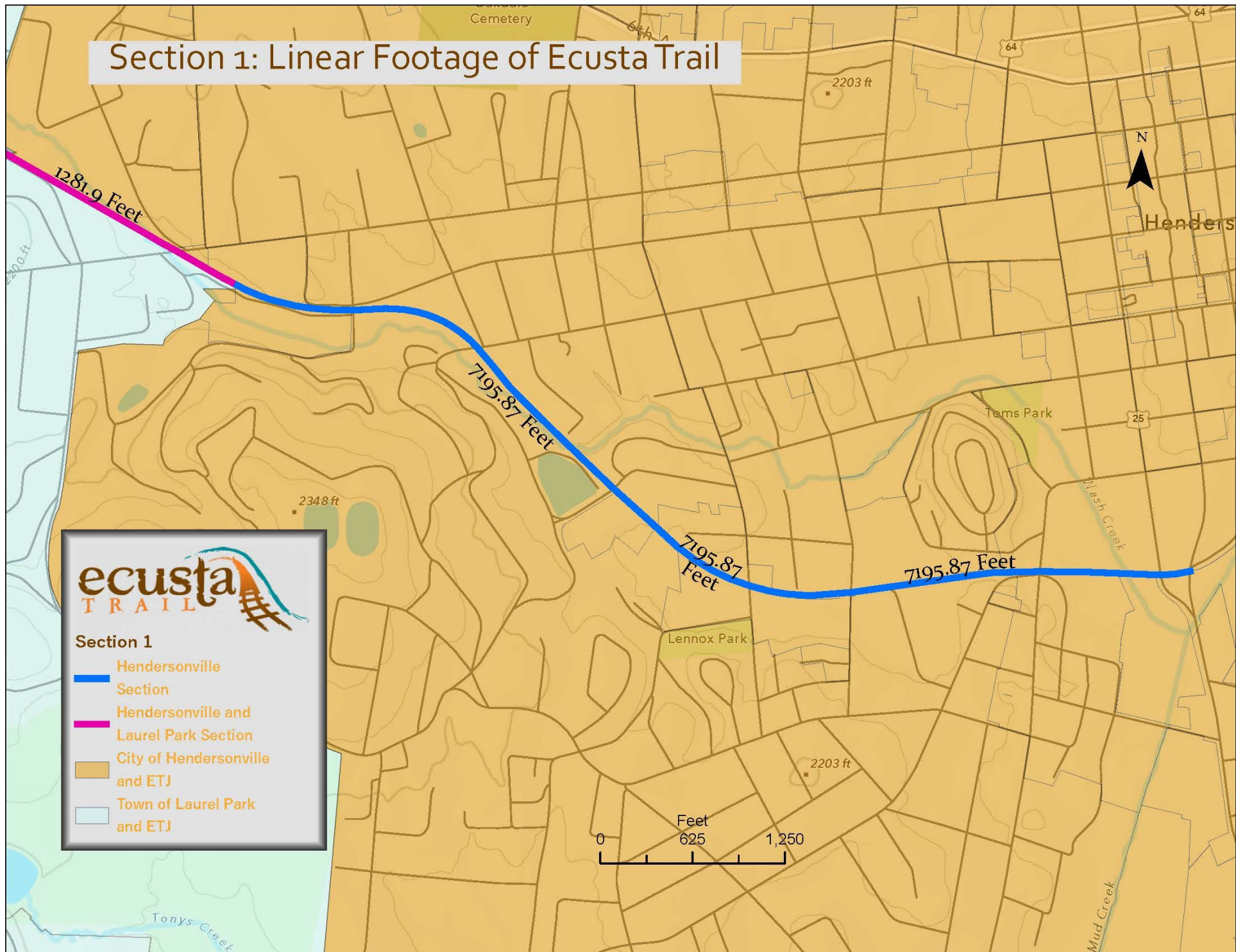
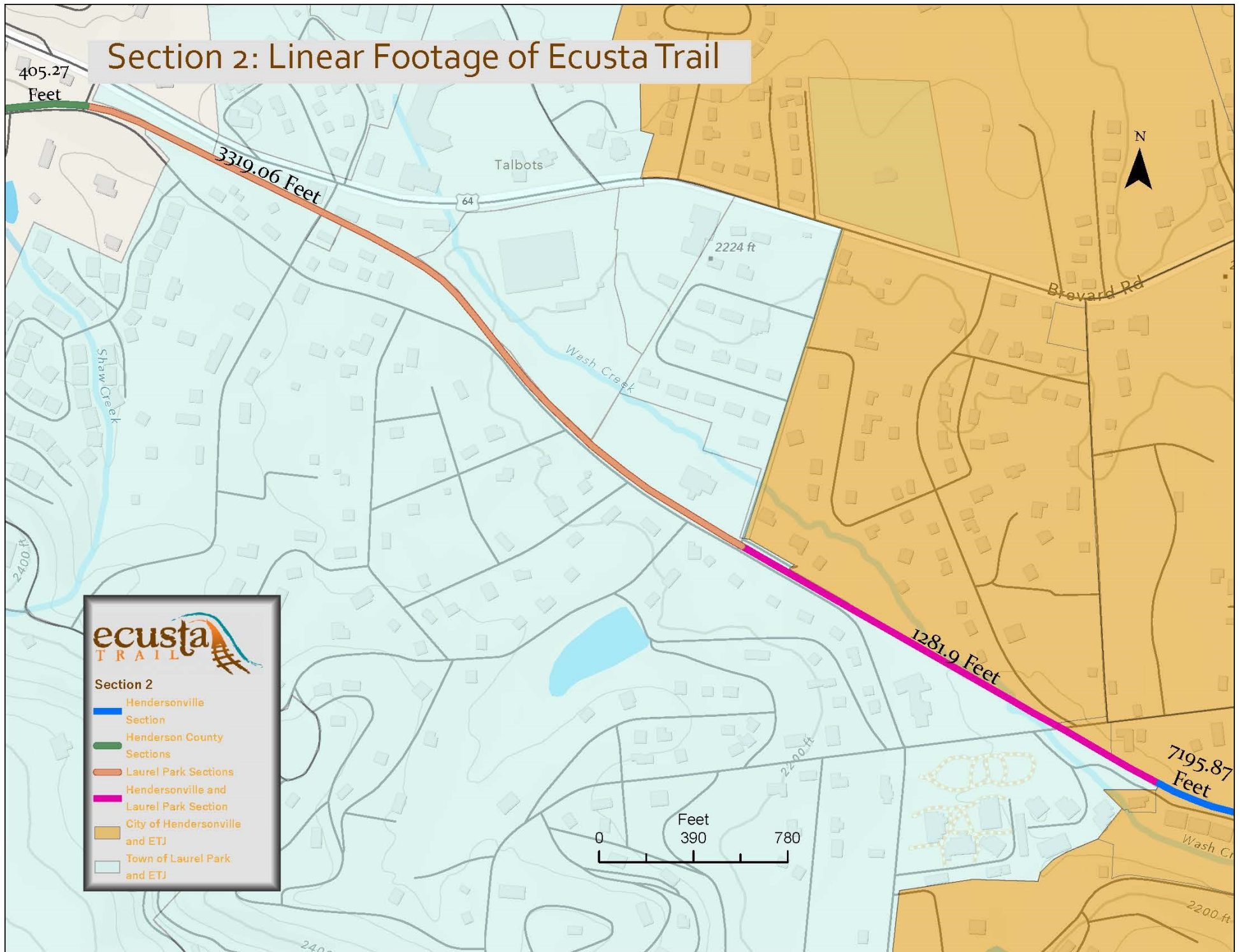


Appendix A

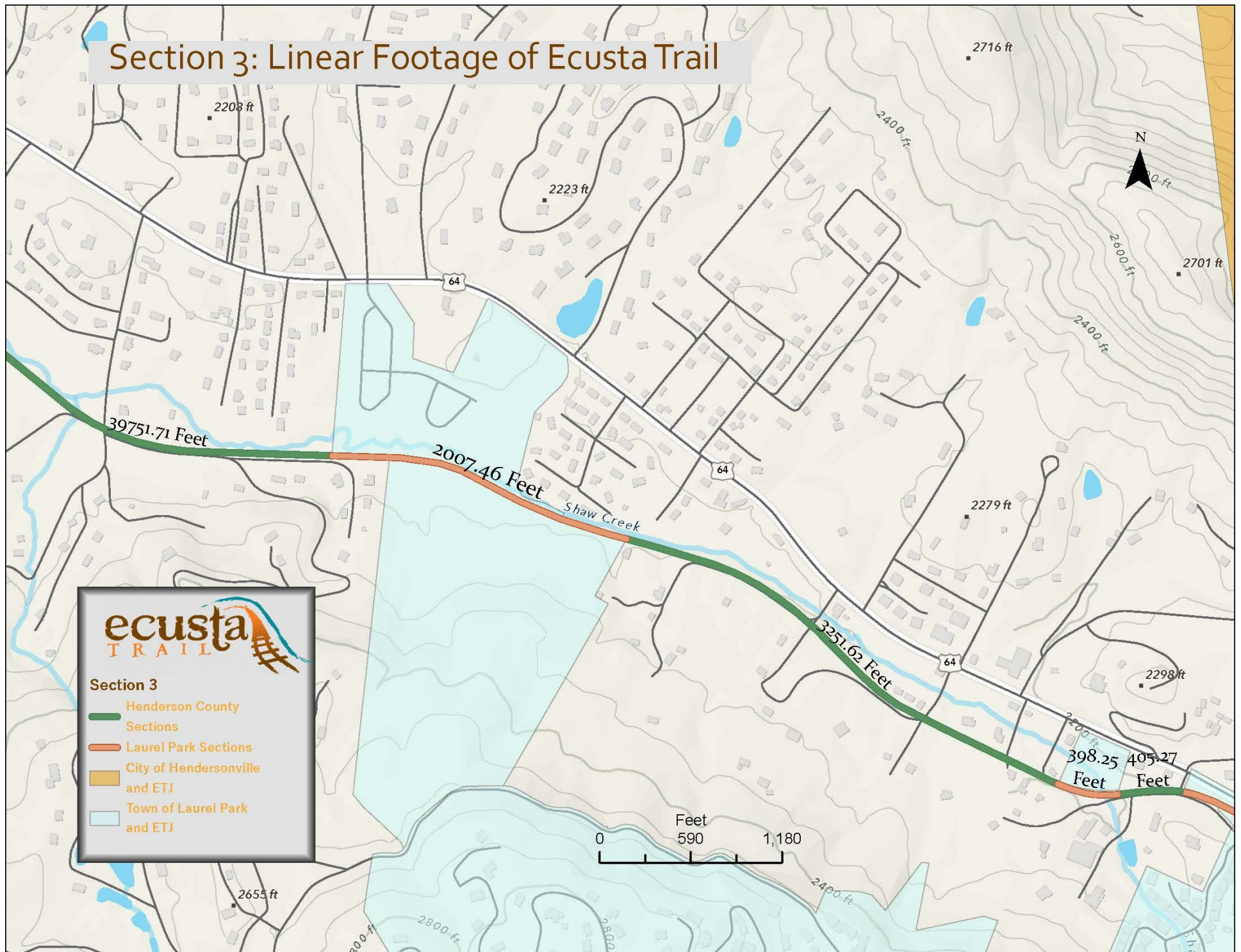
Section 1: Linear Footage of Ecusta Trail



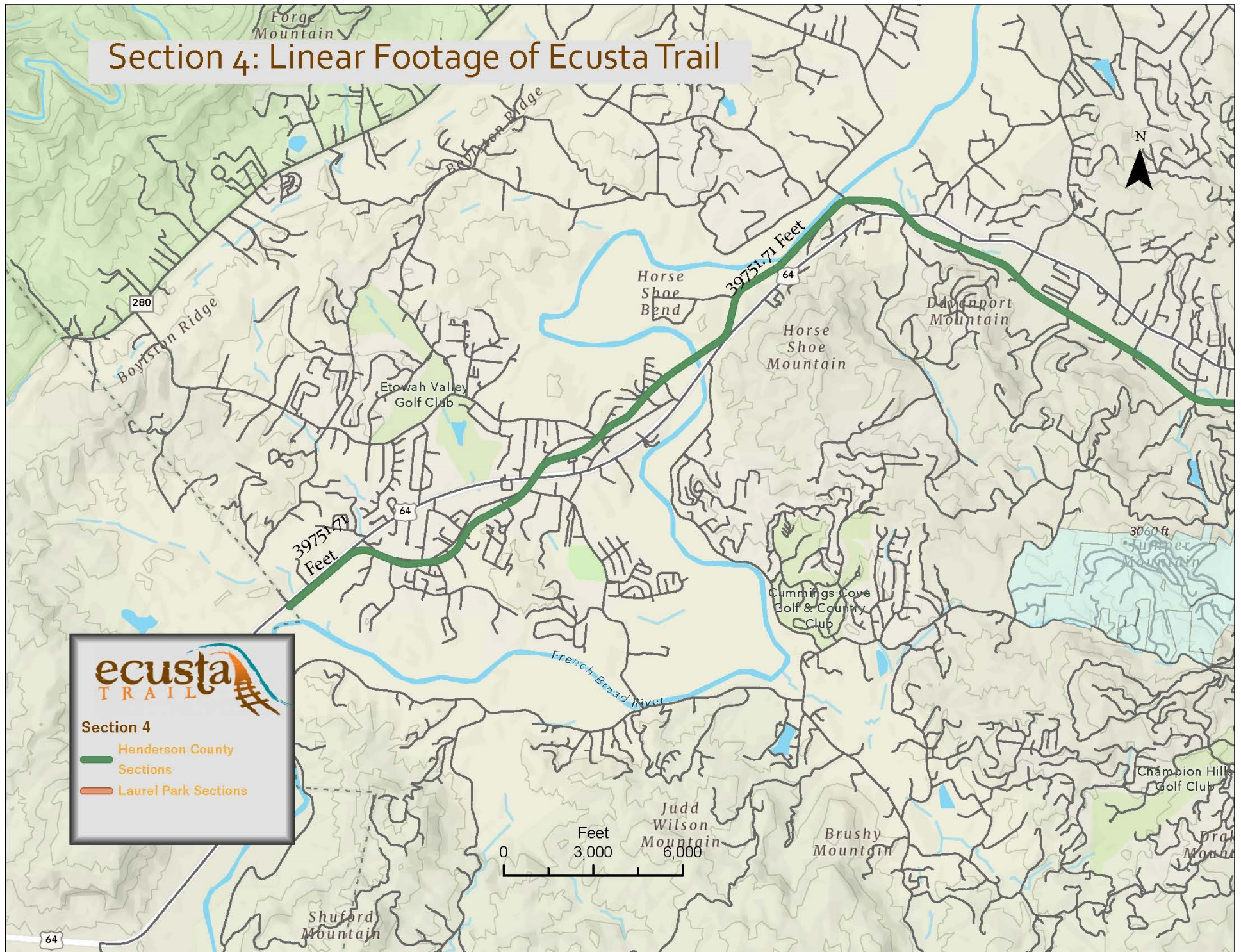
Section 2: Linear Footage of Ecusta Trail



Section 3: Linear Footage of Ecusta Trail



Section 4: Linear Footage of Ecusta Trail



Appendix B

ECUSTA TRAIL MAINTENANCE

King Street to the Henderson County Line

Regular Tasks	Frequency	Responsible Party	Cost
Trash Cans and litter Sweep	3x weekly M,W,F	Contractor	TBD
Blow Off Trail	3x weekly M,W,F	Contractor	TBD
Tree and natural Debris Removal	Weekly	Contractor	TBD
General Safety Inspection Documented on Form	Monthly	Friends of Ecusta/Volunteers	
Trail tree and brush Pruning	Quarterly	Contractor	TBD
Shoulder Maintenance	Quarterly	Contractor	TBD
Herbicide Application	6 treatments annually	Contractor	TBD
Sign repair and cleaning	As needed	Friends of Ecusta/Volunteers	
Graffiti Removal	Removed within 10 days	Contractor	TBD
Work Order Management	Weekly	Contractor	TBD

Irregular Tasks	Frequency		Cost
Storm aftermath clean up	per Hour	Contractor	TBD
Asphalt Repair Patches	per SQFT	Subcontractor	TBD
Special/Emergency Call Out	per hour	Contractor	TBD
Snow and Ice Treatment?	Per hour and per bag	Contractor	TBD
Trail Drainage maintenance	As needed- Annually	Contractor	TBD
Trail Root cuts	1 per year	Contractor	TBD

Large Maintenance Project > \$5,000 (CIP)	Frequency		Cost
Bridge Inspections	every 5 years	County	TBD
Paving Replacements	7-15 year cycle (ind. standard)	County	TBD
Major Tree Work	Annual	County	TBD
Trail Maintenance CIP			
Trail Improvement Projects CIP			

Ecusta Maintenance Equipment List

1. Pull Behind Blower
2. Tractor with radial arm mower
3. Bucket Truck
4. Sweeper
5. Plowing/dump Pickup
6. Dump Pickup
7. Weed-eaters and hand tools
8. Mower
9. Chainsaws and Pruning Equipment
10. Herbicide Equipment
11. Hot patch Asphalt patch and crack sealant
12. Trail Closure/Working Signage

