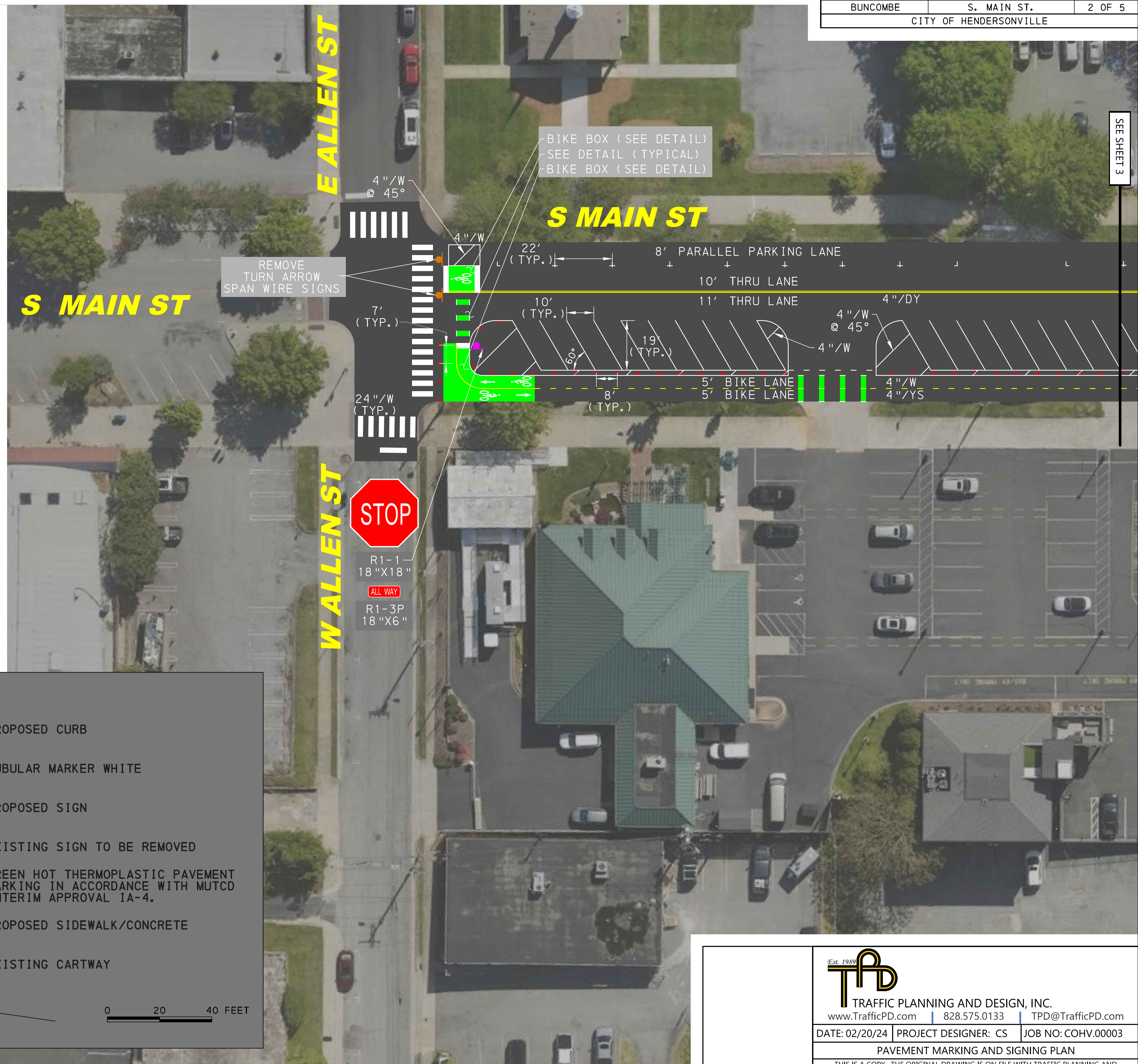


SEE SHEET 3



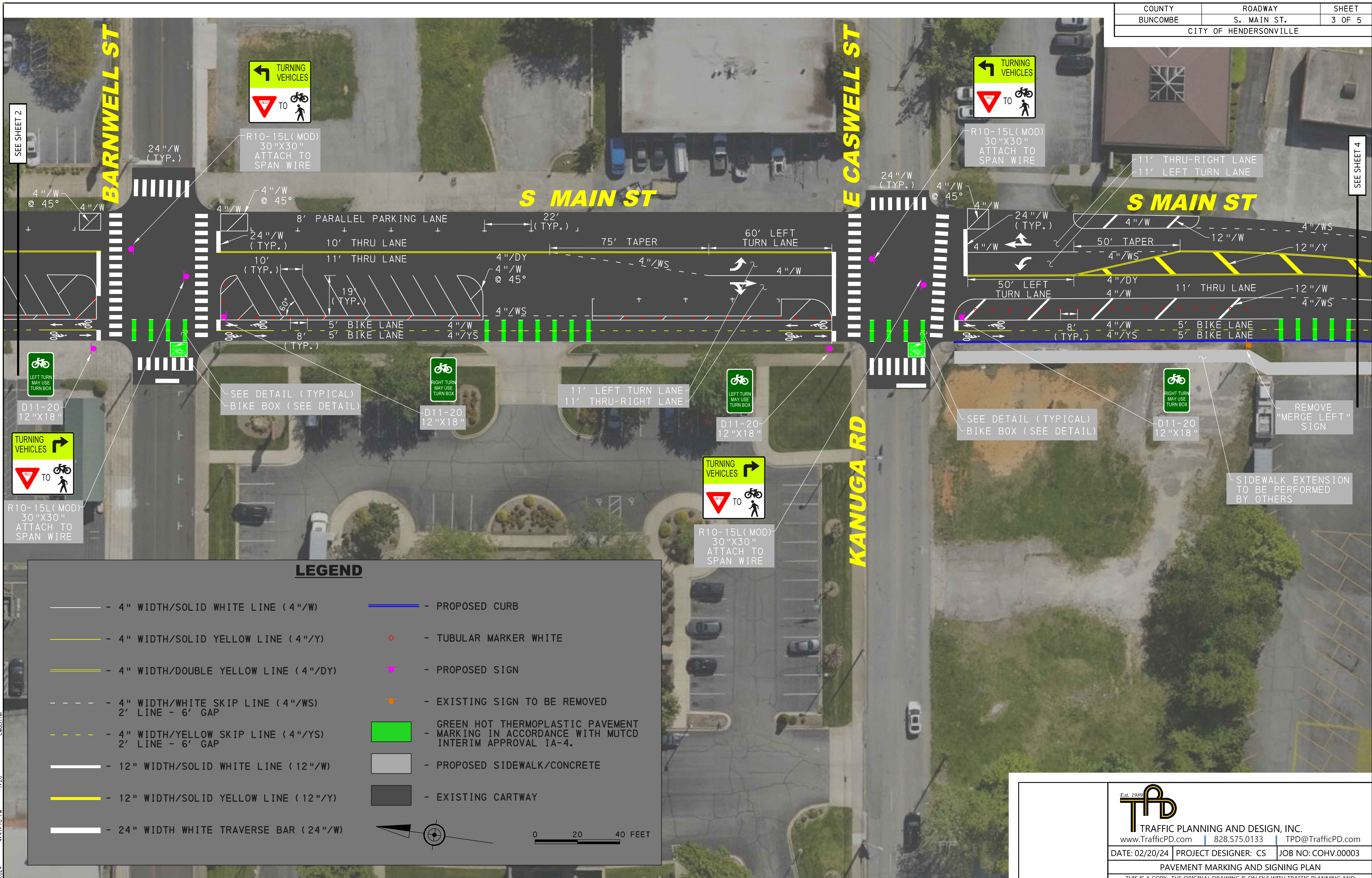
LEGEND

- | | |
|---|--|
| - 4" WIDTH/SOLID WHITE LINE (4"/W) | - PROPOSED CURB |
| - 4" WIDTH/SOLID YELLOW LINE (4"/Y) | - TUBULAR MARKER WHITE |
| - 4" WIDTH/DOUBLE YELLOW LINE (4"/DY) | - PROPOSED SIGN |
| - 4" WIDTH/WHITE SKIP LINE (4"/WS)
2' LINE - 6' GAP | - EXISTING SIGN TO BE REMOVED |
| - 4" WIDTH/YELLOW SKIP LINE (4"/YS)
2' LINE - 6' GAP | - GREEN HOT THERMOPLASTIC PAVEMENT MARKING IN ACCORDANCE WITH MUTCD INTERIM APPROVAL IA-4. |
| - 12" WIDTH/SOLID WHITE LINE (12"/W) | - PROPOSED SIDEWALK/CONCRETE |
| - 12" WIDTH/SOLID YELLOW LINE (12"/Y) | - EXISTING CARTWAY |
| - 24" WIDTH WHITE TRAVERSE BAR (24"/W) | |



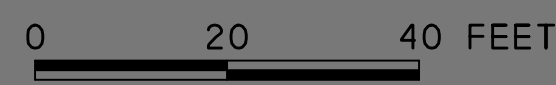
P:\pw\pw_bentley.com\TPD\Projects\COHV\00003 - S Main Ecusta Connection\CADD (HOP - InRoads S32)\Concept\TwoLane P lan01.dgn
 2/20/2024 4:47:05 PM ewachter

 Est. 1989 TRAFFIC PLANNING AND DESIGN, INC. www.TrafficPD.com 828.575.0133 TPD@TrafficPD.com		
DATE: 02/20/24	PROJECT DESIGNER: CS	JOB NO: COHV.00003
PAVEMENT MARKING AND SIGNING PLAN		
<small>THIS IS A COPY. THE ORIGINAL DRAWING IS ON FILE WITH TRAFFIC PLANNING AND DESIGN, INC. ANY AND ALL LIABILITY IS LIMITED TO THE ORIGINAL, UP TO AND INCLUDING THE LAST REVISIONS.</small>		



LEGEND

- | | |
|---|--|
| - 4" WIDTH/SOLID WHITE LINE (4"/W) | - PROPOSED CURB |
| - 4" WIDTH/SOLID YELLOW LINE (4"/Y) | - TUBULAR MARKER WHITE |
| - 4" WIDTH/DOUBLE YELLOW LINE (4"/DY) | - PROPOSED SIGN |
| - 4" WIDTH/WHITE SKIP LINE (4"/WS)
2' LINE - 6' GAP | - EXISTING SIGN TO BE REMOVED |
| - 4" WIDTH/YELLOW SKIP LINE (4"/YS)
2' LINE - 6' GAP | - GREEN HOT THERMOPLASTIC PAVEMENT MARKING IN ACCORDANCE WITH MUTCD INTERIM APPROVAL IA-4. |
| - 12" WIDTH/SOLID WHITE LINE (12"/W) | - PROPOSED SIDEWALK/CONCRETE |
| - 12" WIDTH/SOLID YELLOW LINE (12"/Y) | - EXISTING CARTWAY |
| - 24" WIDTH WHITE TRAVERSE BAR (24"/W) | - NORTH |



pw \\tpd-pw-bentley.com\TPD\Proj\active\use\Documents\Veri\COHV\00003 - S Main Eousta Connection\CADD (HOP - InRoads S32)\Concept\TwoLine P lan02.dgn
 2/20/2024 4:47:10 PM ewachtr

<p>TRAFFIC PLANNING AND DESIGN, INC. www.TrafficPD.com 828.575.0133 TPD@TrafficPD.com</p>		
DATE: 02/20/24	PROJECT DESIGNER: CS	JOB NO: COHV.00003
PAVEMENT MARKING AND SIGNING PLAN		
THIS IS A COPY. THE ORIGINAL DRAWING IS ON FILE WITH TRAFFIC PLANNING AND DESIGN, INC. ANY AND ALL LIABILITY IS LIMITED TO THE ORIGINAL, UP TO AND INCLUDING THE LAST REVISIONS.		

