

# Lakewood Road (+/- 58.9 AC)



Jurisdictional wetlands and waters identified on this map have been located within sub-meter accuracy utilizing a Trimble mapping grade Global Positioning System (GPS) and the subsequent differential correction of that data. GPS points may demonstrate uncorrectable errors due to topography, vegetative cover, and/or multipath signal error.

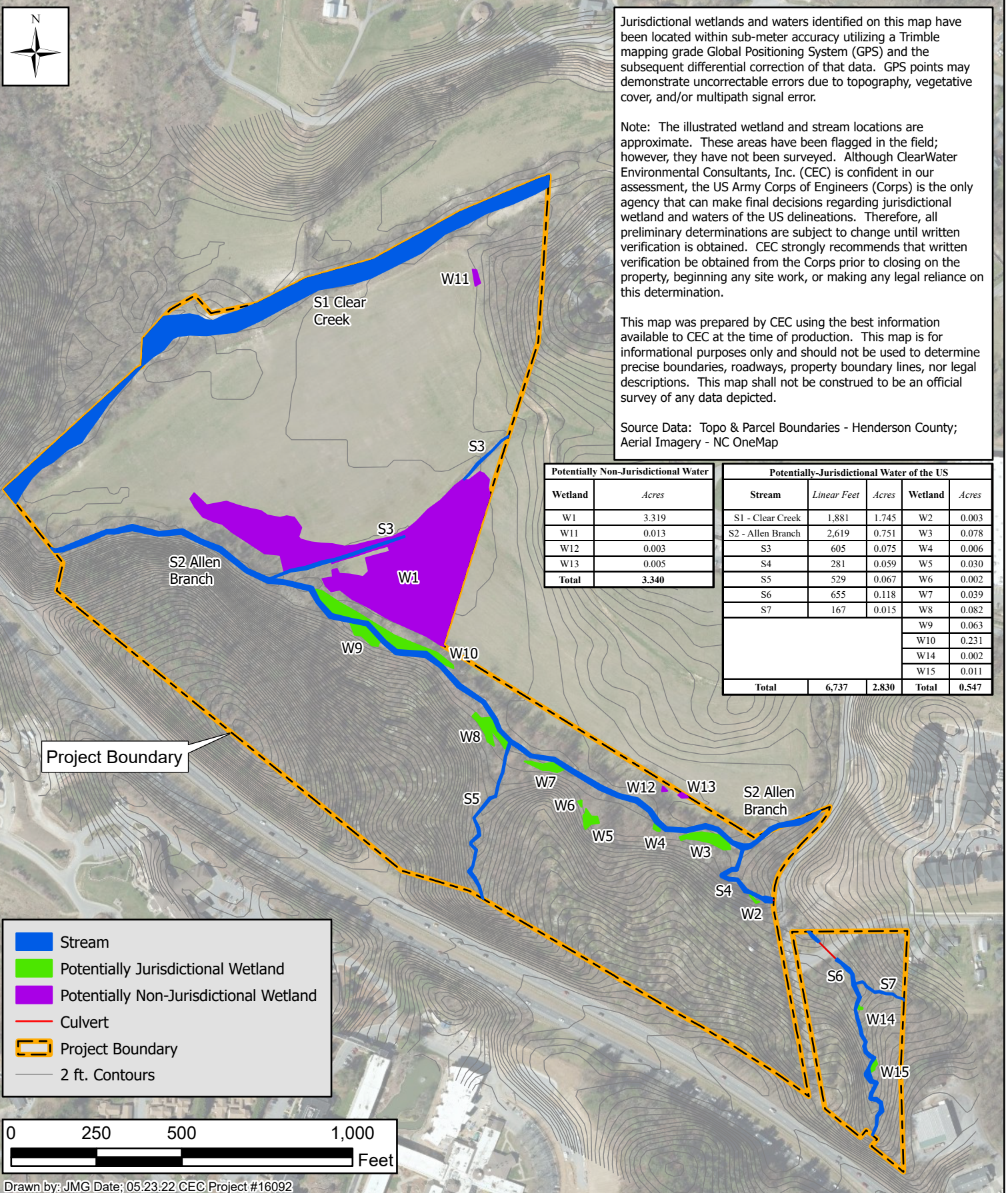
Note: The illustrated wetland and stream locations are approximate. These areas have been flagged in the field; however, they have not been surveyed. Although ClearWater Environmental Consultants, Inc. (CEC) is confident in our assessment, the US Army Corps of Engineers (Corps) is the only agency that can make final decisions regarding jurisdictional wetland and waters of the US delineations. Therefore, all preliminary determinations are subject to change until written verification is obtained. CEC strongly recommends that written verification be obtained from the Corps prior to closing on the property, beginning any site work, or making any legal reliance on this determination.

This map was prepared by CEC using the best information available to CEC at the time of production. This map is for informational purposes only and should not be used to determine precise boundaries, roadways, property boundary lines, nor legal descriptions. This map shall not be construed to be an official survey of any data depicted.

Source Data: Topo & Parcel Boundaries - Henderson County; Aerial Imagery - NC OneMap

Potentially Non-Jurisdictional Water	
Wetland	Acres
W1	3.319
W11	0.013
W12	0.003
W13	0.005
<b>Total</b>	<b>3.340</b>

Potentially-Jurisdictional Water of the US				
Stream	Linear Feet	Acres	Wetland	Acres
S1 - Clear Creek	1,881	1.745	W2	0.003
S2 - Allen Branch	2,619	0.751	W3	0.078
S3	605	0.075	W4	0.006
S4	281	0.059	W5	0.030
S5	529	0.067	W6	0.002
S6	655	0.118	W7	0.039
S7	167	0.015	W8	0.082
			W9	0.063
			W10	0.231
			W14	0.002
			W15	0.011
<b>Total</b>	<b>6,737</b>	<b>2.830</b>	<b>Total</b>	<b>0.547</b>



Stream

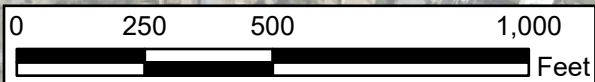
Potentially Jurisdictional Wetland

Potentially Non-Jurisdictional Wetland

Culvert

Project Boundary

2 ft. Contours



Drawn by: JMG Date: 05.23.22 CEC Project #16092

Henderson County,  
North Carolina

**ClearWater**  
An EnviroScience Company  
145 7th Ave West, Suite B  
Hendersonville, North Carolina 28792

Stream and Wetland Map  
Delineated May 17, 2022  
Figure 5