

The Garden window in question is manufactured by JJJ Specialty Company. We would like to order a 48" w x 48" h model. The depth of the proposed window falls within the current soffit with so the overall footprint on her home remains unchanged. Below are some window specs, info, and installation drawings. Maddie happened to notice in her walk that the neighbor behind her has a very similar window installed presently. See below... Hopefully this will work in our favor, as it is in keeping with previous improvements by other homes in the Hyman Heights historical overlay.



**DIMENSIONS: ROUGH OPENING WIDTH X HEIGHT**

**Design Features include:**

- Front opening awning sash
- Triple sealed to keep out the elements
- Dual sash locks and roto operator with folding handle
- DP 80 water rating
- DP 60 structural rating
- 1-1/2" thick insulated oak seat board
- 10-1/4 " deep 3/8" thick annealed glass shelf with polished edges
- 17" Projection
- Removable fiberglass screen

21 standard sizes ranging from 24" X 30" up to 60" X

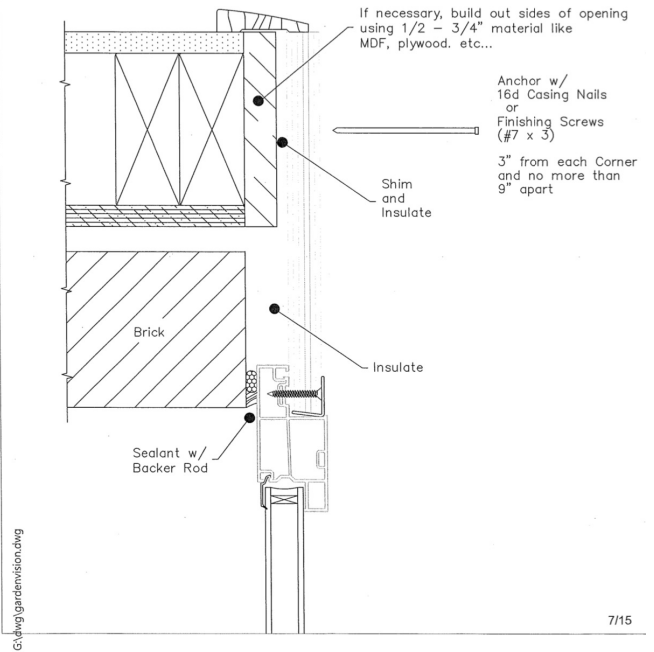
48" Rough Opening

Custom sizes available

Jamb Detail

GW Installation  
Masonry Opening

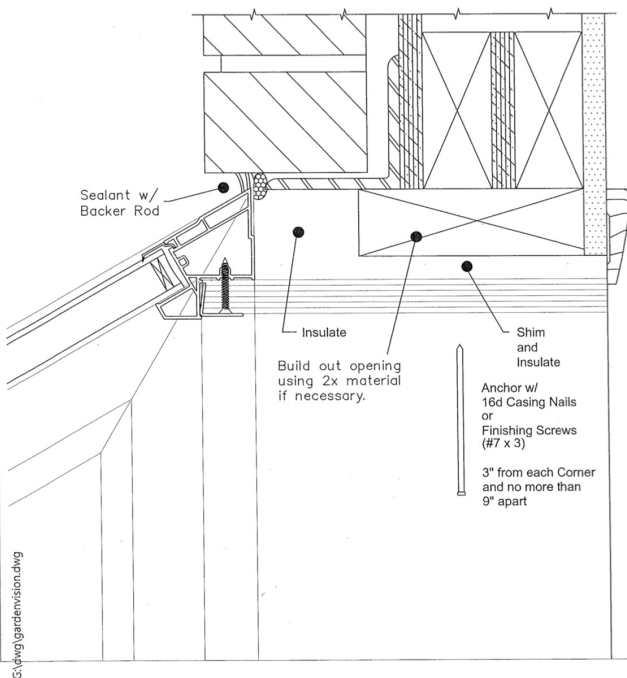
Drawing A  
Side View



Head Detail

GW Installation  
Masonry Opening

Drawing B  
Top View



Seat Detail

GW Installation

Drawing C  
Bottom View

