

PROTOTYPICAL DRAWINGS

SITE & BUILDING PLAN CRITERIA

PROTOTYPICAL DRAWING SET

DTO - A

USE OF THIS DOCUMENT IS INTENDED FOR DESIGN DEVELOPMENT ONLY AND IS NOT FOR CONSTRUCTION USE.

REVISION LOG			
DATE	VERSION	SHEET	DESCRIPTION
01-22-2021	Q2 FY21	03 - BUILDING FLOOR PENETRATION PLAN 07 - FF & E PLAN 09 - INTERIOR ELEVATIONS 13 - POWER PLAN	LISTED SHEETS UPDATED FOR THE FOLLOWING REVISIONS: 1. CUSTOM ESPRESSO WORKSTATION REPLACED WITH STANDARDIZED ESP 12-01 WORKSTATION 2. DT POS CUSTOM COUNTERTOP LENGTH ADJUSTED TO ALIGN WITH EDGE OF UPDATED ESPRESSO WORKSTATION. 3. ADDITIONAL STORAGE CABINET ADDED BELOW DT POS COUNTERTOP. 4. DOUBLE DOOR UNDERCOUNTER REFRIGERATOR BELOW DT POST COUNTERTOP REPLACED WITH TWO SEPARATE UNDERCOUNTER REFRIGERATORS. COUNTERTOP SUPPORT PANELS REPOSITIONED TO ACCOMMODATE THIS CHANGE. 5. WARMING WORKSTATION REPLACED WITH STANDARDIZED DTW 06-01 WORKSTATION. 6. WALK-UP POS CUSTOM COUNTERTOP LENGTH ADJUSTED TO ALIGN TO EDGE OF UPDATED WARMING WORKSTATION. 7. POS SAFE RELOCATED TO BE ADJACENT TO WALK-UP WINDOW POS. 8. TRASH CABINET AND FILLER PANEL ADDED TO MOBILE ORDER AND PAY AREA WHERE SAFE WAS PREVIOUSLY LOCATED. 9. NITROGEN GENERATOR UPDATED TO NEW MODEL.
		01 - ARCHITECTURAL SITE PLAN 1.1 - ARCHITECTURAL SITE PLAN ALTERNATE 12 - ELECTRICAL SITE PLAN	STANDARDIZED DRIVE THRU LANE SIZE; DIMENSIONS; TURNING RADII AND CAR STACK; RELOCATED DOS AND DT MENU LOCATIONS; ADJUSTED SITE SIGNAGE ACCORDINGLY. REVISED POWER, DATA AND LV CONDUIT RUNS TO MATCH ALL STANDARDIZED REVISIONS.

WALL BLOCKING KEY

SYMBOL	ITEM	WEIGHT	HEIGHT A.F.F.	APPROX. WIDTH
A	WORKROOM HAND SINK	128 LBS (58 KG)	36" TO 40" (915MM TO 1015MM)	30" (760MM) BEHIND SINK
B	SHELVES ABOVE COMPARTMENT SINK	200 LBS (91 KG)	48" TO 76" (1220MM TO 1930MM)	96" (2440MM) CENTERED ABOVE COMPARTMENT SINK
C	UPPER WIRE SHELVES	BLOCKING SPECIFICATION TO BE PROVIDED BY VENDOR		
D	SHELVES AT MANAGER'S DESK	300 LBS (136 KG)	32" TO 96" (810MM TO 2440MM)	48" (1220MM) 3/4 (19MM) ACX PLYWOOD, CENTERED ON SHELVES
E	EQUIPMENT RACK AT MANAGER'S DESK	300 LBS (136 KG)	44" TO 96" (1120MM TO 2440MM)	28" (710MM) 3/4 (19MM) ACX PLYWOOD, CENTERED ON RACK
F	METRO SHELVES	BLOCKING SPECIFICATION TO BE PROVIDED BY VENDOR. IN-WALL BLOCKING PREFERRED, HOWEVER EXISTING FRP FINISHED WALL MAY RECEIVE SURFACE MOUNTED, PAINTED WHITE.		
G	RESTROOM GRAB BARS	200 LBS (91 KG)	30" TO 36" (760MM TO 915MM)	60" (1525MM) AROUND WATER CLOSET
H	RESTROOM HAND SINK	200 LBS (91 KG)	COMMERCIAL INSTALLATION REQUIRES CONCEALED ARM CARRIER. REFER TO MFR'S SPECIFICATION.	
I	LOCKERS (3/4" PLYWOOD)	300 LBS (136 KG)	60" TO 72" (1030MM TO 1830MM)	18" (455MM) PAST LOCKERS EA. SIDE
J	UPPER CBE SHELVING	BLOCKING SPECIFICATION FOR CBE METAL SHELVES. REFER TO VENDOR'S SPECIFICATION AND DETAILS.		
K	WATER FILTRATION SYSTEM	TBD BY VENDOR	COORDINATE LOCATION AND EXTENT WITH PENTAIR	
L	WALK-UP MENU BOARDS	25 LBS (12 KG)	SEE ELEVATIONS	8" MINIMUM BEYOND LIMITS
M	DRIVEV-THRU POS CUBBY	300 LBS (136 KG)	SEE ELEVATIONS	8" MINIMUM BEYOND LIMITS

KEYED NOTES

1. OUTLINE OF ENGINE (FOR REFERENCE ONLY)
2. ELECTRICAL PANEL LOCATION. MAINTAIN 36" MINIMUM CLEARANCE IN FRONT OF PANEL FOR SERVICING. EOR TO CONFIRM PANEL SIZES. 54-CIRCUIT PANEL MINIMUM REQUIRED.
3. 30" X 36" CLEAR FOR ROOF LADDER ACCESS
4. STRUCTURAL SHELF FOR WATER HEATER ABOVE. REFERENCE INTERIOR ELEVATION. IF REQUIRED, LOCATE HATCH FOR UTILITY ACCESS.
5. DATA ENTRY POINT. ROUTE OVERHEAD TO MANAGER'S DESK
6. WATER SERVICE ENTRY POINT
7. EXTERIOR ELECTRICAL METER AND CT CABINET
8. SANITARY AND GREASE WASTE DISCHARGE
9. GAS METER, PIPING CONTINUES TO ROOF
10. LOCKABLE HOSE BIBB
11. PREFERRED LOCATION FOR GREASE INTERCEPTOR TO BE COORDINATED WITH SITE

GENERAL NOTES

- A. ALL DIMENSIONS SHOWN ARE TO FINISH FACE OF STRUCTURE, UNLESS SHOWN OR OTHERWISE NOTED.
- B. INSTALL MOISTURE RESISTANT GREEN BOARD BEHIND BAR AND ON ALL WET WALLS.
- C. PROVIDE FURRED OUT WALLS ALONG BACK BAR AND DT BUMP FOR PLUMBING SUPPLY AND DRAINAGE.
- D. FUR OUT INTERIOR FACE OF MASONRY WALLS AND ALL EXTERIOR WET WALLS.
- E. ALL INTERIOR WET WALLS SHALL BE 6" CONSTRUCTION.
- F. INCLUDE WALL BLOCKING AS REQUIRED PER WALL BLOCKING KEY.
- G. PROVIDE 6" CURB AT BASE OF STORE FRONT SYSTEMS TO LIMIT WATER ENTRY.
- H. ALL DOORS SHALL BE 32" MINIMUM CLEAR. CENTER THRESHOLDS AND MATERIAL TRANSITIONS AT CENTER OF DOOR LEAF. STANDARD WIDTH FOR ACCESSIBLE RESTROOM DOORS ARE 36". STANDARD WIDTH FOR SERVICE DOOR IS 42".
- I. ENTRY POINT TO BACK OF HOUSE (WORKROOM) TO INCLUDE DOUBLE-IMPACT ELYSIAN DOOR. IF NO DOOR IS USED, LOCATE ENTRY TO REDUCE CUSTOMER VISIBILITY INTO THE WORKROOM.
- J. FOR COLDER CLIMATES, INCLUDE A HEATED VESTIBULE AT BUILDING PRIMARY ENTRY TO LIMIT UNCONDITIONED AIR ENTRY.

GENERAL LEGEND

- NEW FULL HEIGHT WALL
- NEW PARTIAL HEIGHT WALL
- WALL BLOCKING CALL-OUT
- EXTERIOR WALL

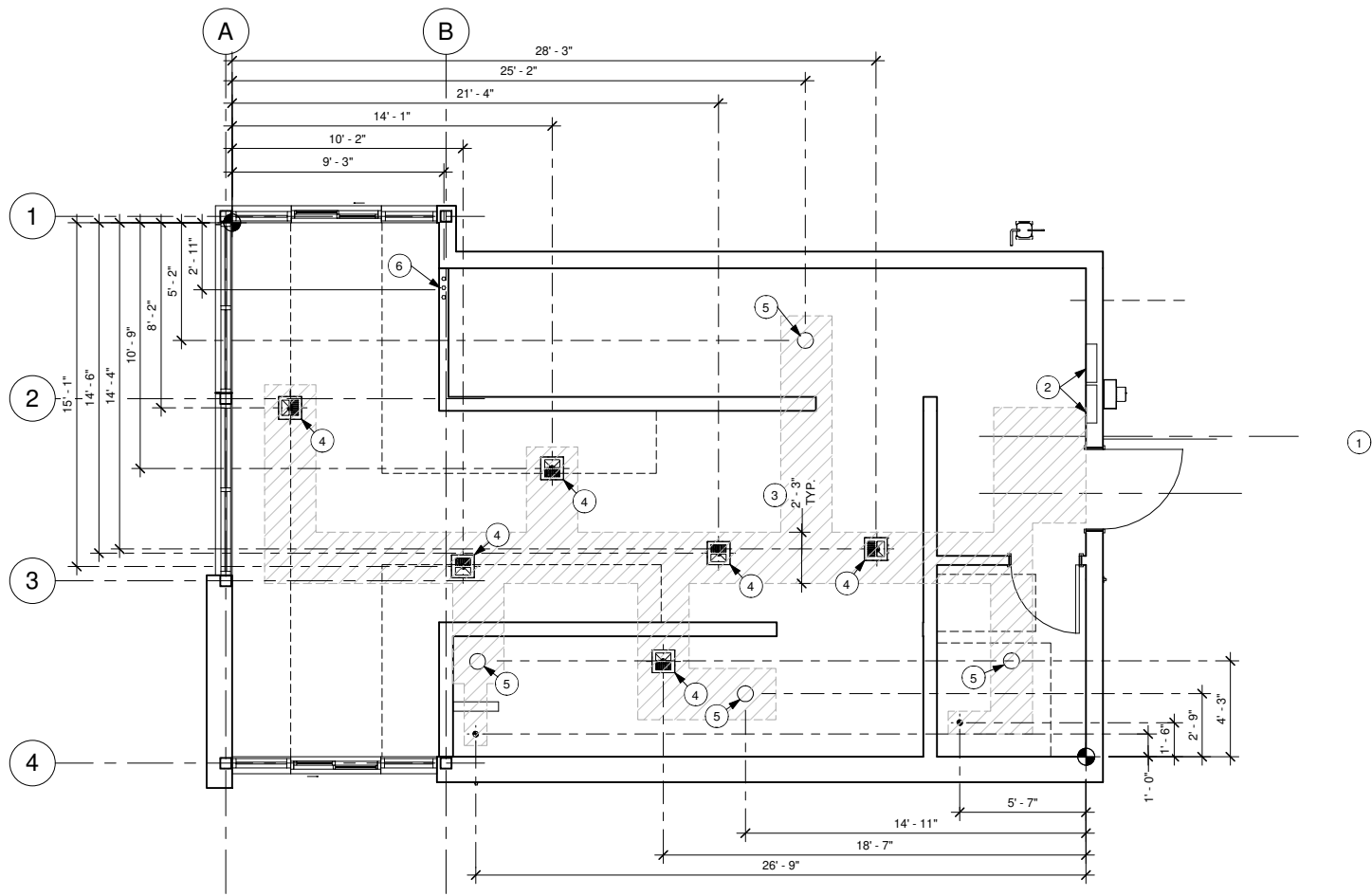
DESIGN DEVELOPMENT ONLY - NOT INTENDED FOR CONSTRUCTION USE

BUILDING FLOOR PLAN

DTO - A

1 BUILDING FLOOR PLAN
Scale: 1/4" = 1'-0"





1 FLOOR PENETRATION PLAN
Scale: 1/4" = 1'-0"

GENERAL NOTES

- DIMENSIONS SHOWN TO CENTERLINE OF ALL PENETRATIONS, DRAINS, AND STUB UPS.
- FLOOR PENETRATIONS SHOWN FOR REFERENCE ONLY.
- FLOOR SINKS, DRAINS, AND CLEAN OUTS SHOULD BE LOCATED IN ACCESSIBLE AREA FOR EASE OF ACCESS FOR CLEANING. TYPICALLY LOCATE AT CENTERLINE OF FRONT EDGE OF BAR.
- ENSURE ALL INDIRECT DRAIN LINES ARE TO FLOOR SINK WITH MIN. 1" AIR GAP.
- ENGINEER OF RECORD SHALL LOCATE CLEANOUTS BASED ON LAYOUT OF SUB SURFACE PLUMBING.

KEYED NOTES

- PROPOSED GREASE TRAP LOCATION: WHEN REQUIRED, GREASE TRAP LINE TO BE LOCATED MIN. 27" BELOW FLOOR.
 - ELECTRICAL PANELS
- FLOOR PENETRATIONS**
- AREA OF CONCRETE POUR BACK: GENERAL CONTRACTOR TO COORDINATE TRENCHING WITH SPECIFIC TRADES AND SITE CONDITIONS TO DETERMINE ACTUAL LAYOUT.
 - FLOOR SINK: LOCATE FLOOR SINKS IN THE FOLLOWING LOCATIONS. EQUIPMENT DRAINAGE CAN SHARE FLOOR SINKS IF WITHIN REASONABLE DISTANCE OF EACH OTHER. INSURE MINIMUM 1/4" PER FOOT SLOPE TO DRAIN.
 - BACK OF ENGINE: ICE MACHINE, 3-COMP SINK, DISHWASHING MACHINE, WATER FILLING STATION.
 - FRONT OF ENGINE: ESPRESSO STATION, COLD BEVERAGE STATION, NITRO STATION.
 - FLOOR DRAIN: LOCATE MINIMUM (1) IN ENGINE, (1) IN BOH, (1) AT WATER FILTRATION AND (1) IN RESTROOMS
 - DRIVE THRU CONDUIT: TERMINATE IN WALL AT DRIVE-THRU EQUIPMENT. REFER TO DRIVE THRU EQUIPMENT DETAILS FOR ADDITIONAL INFORMATION.

LEGEND

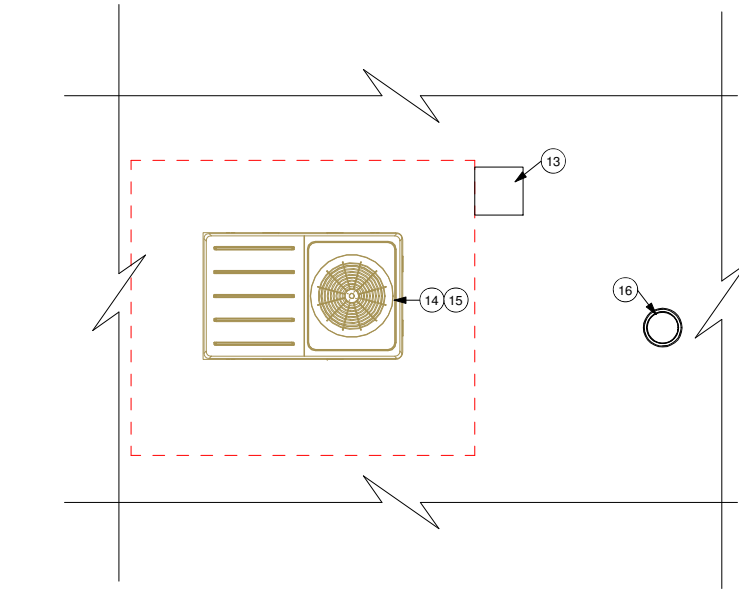
- | | |
|--|--------------------|
| | EXISTING WALL |
| | CONCRETE LEAVE-OUT |
| | DATUM POINT |
| | FLOOR DRAIN |
| | FLOOR CLEAN-OUT |
| | FLOOR SINK |



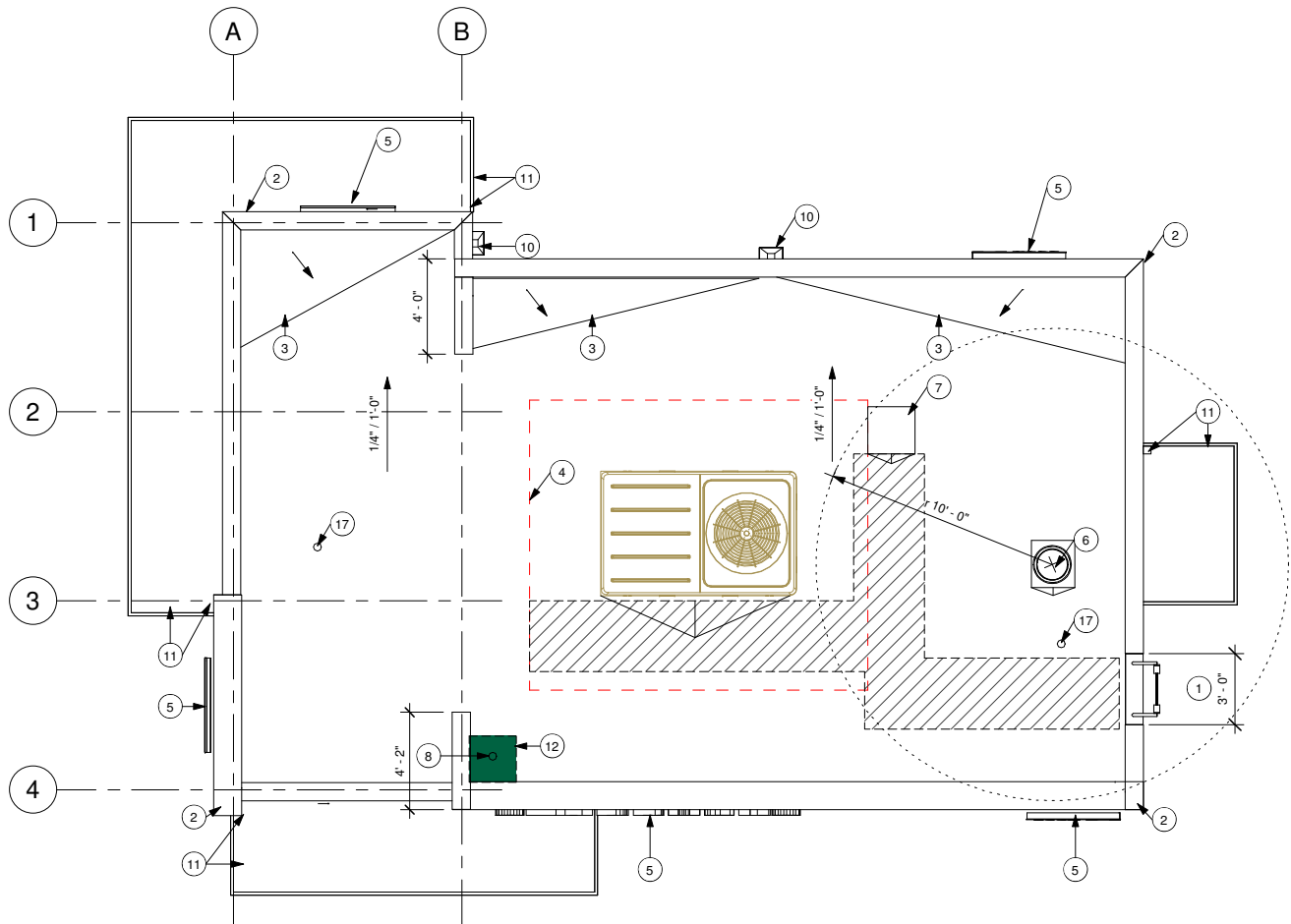
DESIGN DEVELOPMENT ONLY - NOT INTENDED FOR CONSTRUCTION USE

BUILDING FLOOR PENETRATION PLAN

DTO - A



2 ROOF POWER PLAN
Scale: 1/4" = 1'-0"



1 ROOF PLAN
Scale: 1/4" = 1'-0"

GENERAL NOTES

- A. MECHANICAL SHOWN FOR REFERENCE ONLY. HVAC ENGINEER SHALL CALCULATE SIZE, NUMBER, AND LOCATE TO OPTIMIZE DUCT RUNS AND STRUCTURAL FRAMING REQUIREMENTS.
- B. STARBUCKS PREFERRED VENDORS ARE TRAIN AND CARRIER. PURCHASE CURBS, UNITS, AND ACCESSORIES THROUGH NATIONAL ACCOUNTS PROGRAM.
- C. ONE TEMPERATURE SENSOR PER HVAC UNIT SHALL BE PLACED TO REPRESENT THE OPTIMAL AMBIENT TEMPERATURE OF THE SPACE BEING CONTROLLED. DO NOT LOCATE SENSORS NEXT TO HEAT GENERATING EQUIPMENT, THE 3-COMPARTMENT SINK, OR DELIVERY DOORS. DO NOT PLACE SENSORS UNDER SUPPLY AIR DEVICES, ON EXTERIOR WALL, OR IN DIRECT SUN.
- D. PROVIDE SINGLE PLY ROOF MEMBRANE SLOPE MIN. 1/4" PER FOOT. INSTALL TRAFFIC PADS ADJACENT TO ROOF TOP EQUIPMENT AND TO ROOF ACCESS POINT.
- E. ENSURE POWER IN SIGNAGE LOCATIONS. COORDINATE CONDUIT RUNS AND J-BOXES WITH SIGNAGE VENDOR. RUN CONDUIT THROUGH WALL TO DISCONNECT (PREFERRED). DO NOT PENETRATE BACK SIDE OF CANOPY.

KEYED NOTES

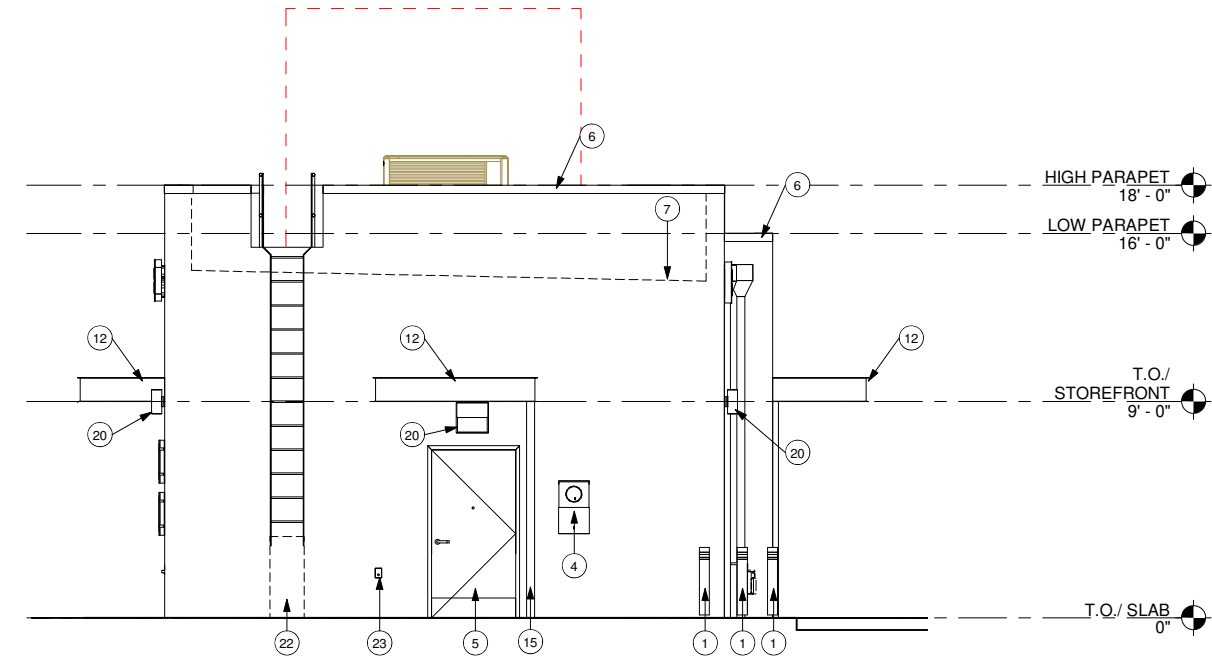
1. ROOF ACCESS LADDER
2. PRE-FINISHED METAL COPING, TYPICAL
3. ROOF CRICKET
4. MAINTAIN MIN. 4'-0" CLEARANCE AROUND RTU ZONE
5. EXTERIOR SIGNAGE
- ROOFTOP EQUIPMENT**
6. **RESTROOM EXHAUST FAN**; LOCATE UTILITY SET FAN IN CLOSE PROXIMITY TO RESTROOMS. ENSURE MIN. 10'-0" DISTANCE FROM RTU INTAKE.
7. **ICE MACHINE CONDENSER**; SET CONDENSER ON SLEEPERS WHICH SPAN MIN. (2) JOIST BAYS. FASTEN SLEEPERS TO STRUCTURE BELOW.
8. **WATER HEATER FLUE**; LOCATE IN CLOSE PROXIMITY TO WATER HEATER. ENSURE MIN. 10'-0" DISTANCE FROM RTU INTAKE.
9. **PENETRATIONS**; ENSURE ALL ELECTRICAL, GAS, CONDENSATE, AND REFRIGERATION PENETRATIONS ARE PROPERLY SEALED TO MAINTAIN WATER PROOF INTEGRITY OF ROOFING.
10. **SCUPPER AND DOWNSPOUT**; CONNECT TO SITE STORM DRAIN SYSTEM. NO DIRECT DISCHARGE TO SIDEWALKS OR PARKING LOT.
11. **CANOPY**; OUTLINE OF CANOPY BELOW. SLOPE 1/4" TOWARD BUILDING TO GUTTER AND DOWNSPOUT. CONNECT DOWNSPOUT TO SITE DRAINAGE SYSTEM.
12. STRUCTURAL MODIFICATION AS NEEDED FOR WATER HEATER HEAD CLEARANCE.
13. ICE MACHINE RECEPTACLE 72" AFF. CONDENSER ON ROOF
14. GFI RECEPTACLE ON RTU
15. DISCONNECT FOR RTU AND JUNCTION BOX FOR DUCT SMOKE DETECTOR
16. PROVIDE DISCONNECTION MEANS FOR EXAHUST FAN ON ROOF
17. **SANITARY VENT**; ENSURE MIN 10'-0" DISTANCE FROM RTU INTAKE.



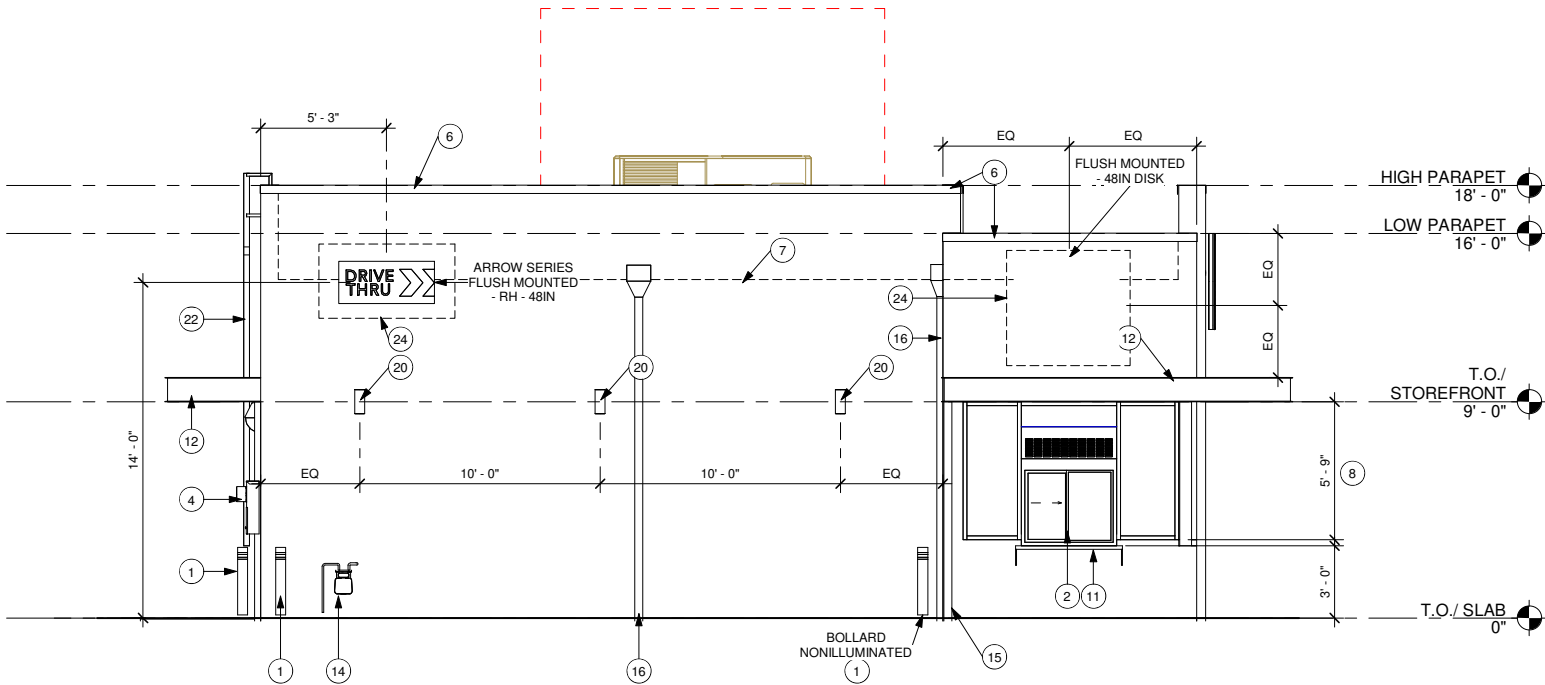
DESIGN DEVELOPMENT ONLY - NOT INTENDED FOR CONSTRUCTION USE

BUILDING ROOF PLAN

DTO - A



2 Exterior B
Scale: 1/4" = 1'-0"



1 Exterior A
Scale: 1/4" = 1'-0"

GENERAL NOTES

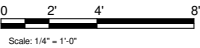
- A. ARCHITECTURAL BUILDING MASSING, HEIGHTS, CANOPIES, AND SIGNAGE SHOWN FOR REFERENCE ONLY. PROVIDE SITE ADAPT ARCHITECTURE BASED ON THE REGIONAL AND SITE-SPECIFIC REQUIREMENTS OF THE CAFÉ.
- B. SIGNAGE DIRECTION, USAGE, AND PLACEMENT FOR REFERENCE ONLY. FINAL DESIGN PER STARBUCKS DESIGN REGIONAL OR SITE-SPECIFIC DESIGN CONCEPT. ALIGN CENTER OF SIGN WITH CENTER OF ADJACENT SIGNAGE, UNLESS OTHERWISE NOTED.
- C. PROVIDE J-BOX WITH PULL STRING FOR FUTURE BUILDING SIGNAGE. LOCATE SIGNAGE DISCONNECT INSIDE BUILDING SPACE ADJACENT TO SIGN.
- D. PROVIDE 3/4" MARINE GRADE BLOCKING FOR EXTERIOR SIGNAGE. EXTEND BLOCKING 8" BEYOND EDGE OF SIGNAGE, TYPICAL.
- E. PROVIDE ROOF EQUIPMENT SCREENING AS REQUIRED BY LOCAL JURISDICTION.

SIGNAGE TO BE SUBMITTED UNDER SEPARATE PERMIT BY OTHERS - SHOWN FOR REFERENCE ONLY.

DIMENSIONS OF BUILDING SHELL FOR REFERENCE ONLY

KEYED NOTES

- 1. NON-ILLUMINATED PROTECTIVE BOLLARD
- 2. PRIMARY DRIVE THRU SERVICE WINDOW
- 3. SECONDARY WALK-UP SERVICE WINDOW
- 4. ELECTRICAL METER
- 5. SERVICE DOOR
- 6. PRE-FINISHED METAL COPING, TYPICAL
- 7. OUTLINE OF ROOF BEYOND
- STOREFRONT SYSTEM AND DOORS
- 8. STOREFRONT: EXTEND GLAZING TO 9'-0" AFF. WITH TEMPERED GLAZING PER CODE.
- 9. STORE ADDRESS: PROVIDE 3" HIGH BLACK ACRYLIC STORE ADDRESS ON GLAZING ABOVE WALK-UP WINDOW.
- 10. DT WINDOW: PROVIDE READY ACCESS DT SERVICE WINDOW PER REGIONAL SPECIFICATION. WINDOW AND AIR CURTAIN FINISH TO MATCH ADJACENT STOREFRONT. SPECIFIC WINDOW SELECTION BASED ON REGIONAL AND CLIMATE VARIATIONS.
- 11. DT WINDOW SHELVE: INSTALL SERVICE WINDOW SHELVE AT 36" AFF INSIDE AND 42" AFF OUTSIDE, AS MEASURED ABOVE THE DT SURFACE, OR AS PER REGIONAL OR SITE REQUIREMENTS.
- CANOPIES AND AWNINGS
- 12. DT CANOPY: CANOPY AT DT WINDOW SHALL BE MIN. 9'-6" AFF CLEAR ABOVE THE DT LANE. PREFERRED 10'-0" AFF TO ALIGN WITH VISUAL HEIGHT OF STOREFRONT CANOPY.
- 13. STOREFRONT: INCLUDE EXTERIOR CANOPY, AWNINGS, OR VERTICAL FAÇADE ARTICULATION AT WINDOWS TO REDUCE SOLAR HEAT GAIN AND GLARE. PREFERRED BOTTOM HEIGHT OF 9'-0" AFF TO ALIGN WITH TOP OF STOREFRONT HEADER.
- 14. GAS METER
- 15. CANOPY DOWNSPOUTS: CONNECT TO UNDERGROUND STORM DRAIN.
- 16. ROOF SCUPPER AND OVERFLOW: CONNECT TO UNDERGROUND STORM DRAIN.
- BUILDING SIGNAGE
- 17. SIREN DISK: PRIMARY SIGNAGE OPTION. CENTER SIREN ABOVE ENTRY DOORS, TYPICAL.
- 18. WORDMARK: SECONDARY SIGNAGE OPTION. PREFERRED USAGE OF "STARBUCKS" RATHER THAN "STARBUCKS COFFEE".
- 19. DRIVE THRU SIGN: LOCATE SIGN ON BUILDING TO INFORM DRIVERS WHICH DIRECTION TO TRAVEL TO DT LANE ENTRY.
- 20. EXTERIOR LIGHTING: PROVIDE EXTERIOR SCONCES AS INDICATED. LOCATE SECURITY LIGHT AT EXTERIOR ENTRANCES. MOUNT AT 10'-0" AFF OR AS CANOPY HEIGHT PERMITS.
- 21. FOUR (4) WALK-UP MENU BOARDS, SECURE TO BUILDING FAÇADE. .
- 22. ROOF ACCESS LADDER: LOCATE RETRACTABLE ROOF ACCESS LADDER IN INCONSPICUOUS LOCATION, AWAY FROM CUSTOMER VIEW. REAR OF BUILDING ADJACENT TO SERVICE DOOR PREFERRED.
- 23. LOCKABLE HOSE BIB
- 24. PROVIDE 3/4" MARINE GRADE PLYWOOD FOR FIXTURE ATTACHMENTS, TYPICAL.



DESIGN DEVELOPMENT ONLY - NOT INTENDED FOR CONSTRUCTION USE

BUILDING EXTERIOR ELEVATIONS

DTO - A

GENERAL NOTES

- A. ARCHITECTURAL BUILDING MASSING, HEIGHTS, CANOPIES, AND SIGNAGE SHOWN FOR REFERENCE ONLY. PROVIDE SITE ADAPT ARCHITECTURE BASED ON THE REGIONAL AND SITE-SPECIFIC REQUIREMENTS OF THE CAFÉ.
- B. SIGNAGE DIRECTION, USAGE, AND PLACEMENT FOR REFERENCE ONLY. FINAL DESIGN PER STARBUCKS DESIGN REGIONAL OR SITE-SPECIFIC DESIGN CONCEPT. ALIGN CENTER OF SIGN WITH CENTER OF ADJACENT SIGNAGE, UNLESS OTHERWISE NOTED.
- C. PROVIDE J-BOX WITH PULL STRING FOR FUTURE BUILDING SIGNAGE. LOCATE SIGNAGE DISCONNECT INSIDE BUILDING SPACE ADJACENT TO SIGN.
- D. PROVIDE ¾" MARINE GRADE BLOCKING FOR EXTERIOR SIGNAGE. EXTEND BLOCKING 8" BEYOND EDGE OF SIGNAGE, TYPICAL.
- E. PROVIDE ROOF EQUIPMENT SCREENING AS REQUIRED BY LOCAL JURISDICTION.

SIGNAGE TO BE SUBMITTED UNDER SEPARATE PERMIT BY OTHERS - SHOWN FOR REFERENCE ONLY.

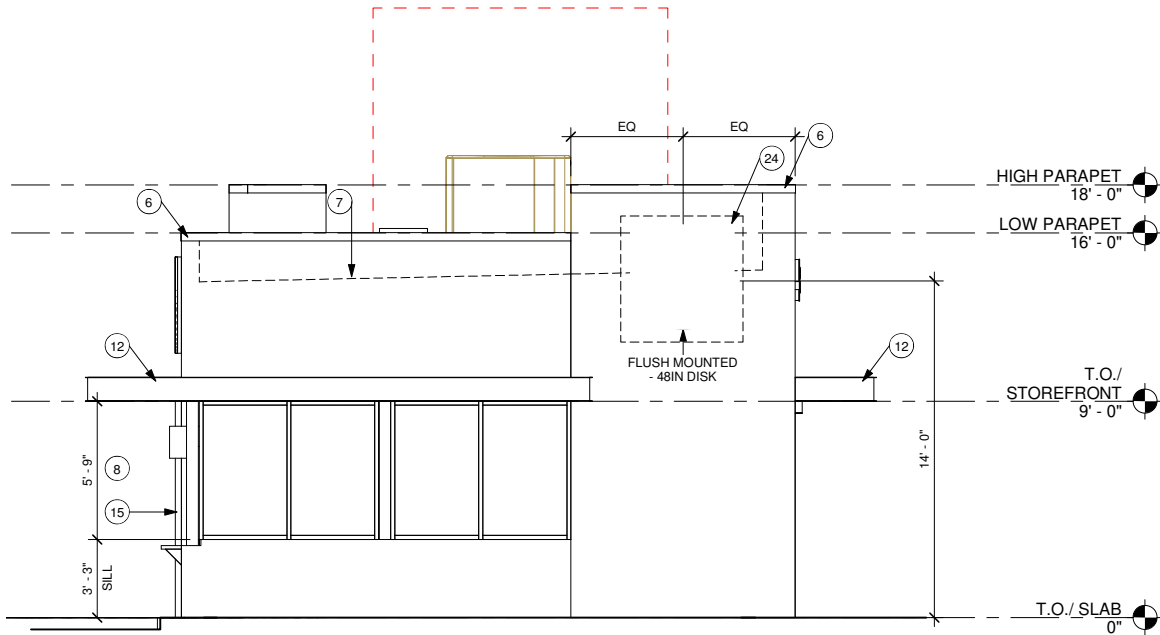
DIMENSIONS OF BUILDING SHELL FOR REFERENCE ONLY

KEYED NOTES

- NON-ILLUMINATED PROTECTIVE BOLLARD
- PRIMARY DRIVE THRU SERVICE WINDOW
- SECONDARY WALK-UP SERVICE WINDOW
- ELECTRICAL METER
- SERVICE DOOR
- PRE-FINISHED METAL COPING, TYPICAL
- OUTLINE OF ROOF BEYOND
- STOREFRONT SYSTEM AND DOORS**
- STOREFRONT; EXTEND GLAZING TO 9'-0" AFF. WITH TEMPERED GLAZING PER CODE.
- STORE ADDRESS; PROVIDE 3" HIGH BLACK ACRYLIC STORE ADDRESS ON GLAZING ABOVE WALK-UP WINDOW.
- DT WINDOW; PROVIDE READY ACCESS DT SERVICE WINDOW PER REGIONAL SPECIFICATION. WINDOW AND AIR CURTAIN FINISH TO MATCH ADJACENT STOREFRONT. SPECIFIC WINDOW SELECTION BASED ON REGIONAL AND CLIMATE VARIATIONS.
- DT WINDOW SHELF; INSTALL SERVICE WINDOW SHELF AT 36" AFF INSIDE AND 42" AFF OUTSIDE. AS MEASURED ABOVE THE DT SURFACE, OR AS PER REGIONAL OR SITE REQUIREMENTS.
- CANOPIES AND AWNINGS**
- DT CANOPY; CANOPY AT DT WINDOW SHALL BE MIN. 9'-6" AFF CLEAR ABOVE THE DT LANE. PREFERRED 10'-0" AFF TO ALIGN WITH VISUAL HEIGHT OF STOREFRONT CANOPY.
- STOREFRONT; INCLUDE EXTERIOR CANOPY, AWNINGS, OR VERTICAL FAÇADE ARTICULATION AT WINDOWS TO REDUCE SOLAR HEAT GAIN AND GLARE. PREFERRED BOTTOM HEIGHT OF 9'-0" AFF TO ALIGN WITH TOP OF STOREFRONT HEADER.
- GAS METER
- CANOPY DOWNSPOUTS; CONNECT TO UNDERGROUND STORM DRAIN.
- ROOF SCUPPER AND OVERFLOW; CONNECT TO UNDERGROUND STORM DRAIN.
- BUILDING SIGNAGE**
- SIREN DISK; PRIMARY SIGNAGE OPTION. CENTER SIREN ABOVE ENTRY DOORS, TYPICAL.
- WORDMARK; SECONDARY SIGNAGE OPTION. PREFERRED USAGE OF "STARBUCKS" RATHER THAN "STARBUCKS COFFEE".
- DRIVE THRU SIGN; LOCATE SIGN ON BUILDING TO INFORM DRIVERS WHICH DIRECTION TO TRAVEL TO DT LANE ENTRY.
- EXTERIOR LIGHTING; PROVIDE EXTERIOR SCONCES AS INDICATED. LOCATE SECURITY LIGHT AT EXTERIOR ENTRANCES. MOUNT AT 10'-0" AFF OR AS CANOPY HEIGHT PERMITS.
- FOUR (4) WALK-UP MENU BOARDS, SECURE TO BUILDING FAÇADE. .
- ROOF ACCESS LADDER; LOCATE RETRACTABLE ROOF ACCESS LADDER IN INCONSPICUOUS LOCATION, AWAY FROM CUSTOMER VIEW. REAR OF BUILDING ADJACENT TO SERVICE DOOR PREFERRED.
- LOCKABLE HOSE BIB
- PROVIDE ¾" MARINE GRADE PLYWOOD FOR FIXTURE ATTACHMENTS, TYPICAL.

2 Exterior D

Scale: 1/4" = 1'-0"



1 Exterior C

Scale: 1/4" = 1'-0"

