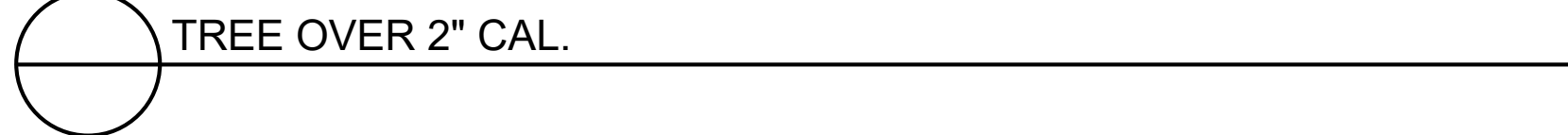
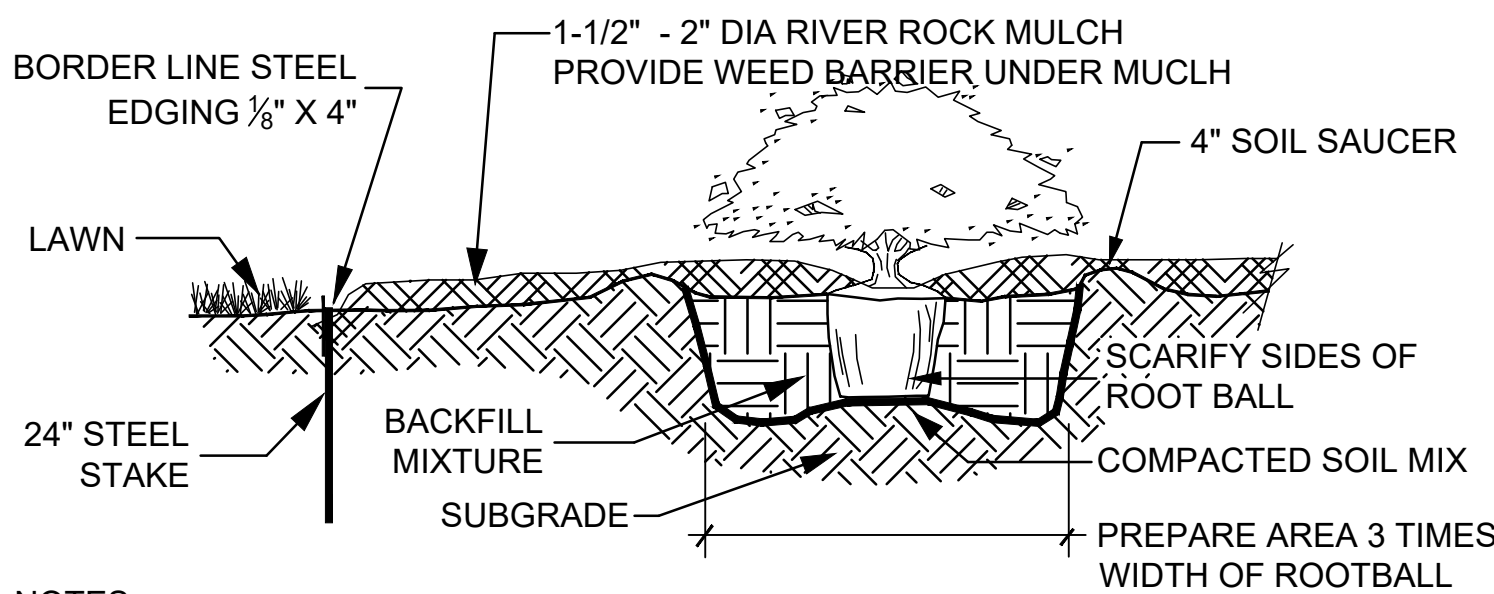


- NOTES:
1. REMOVE WIRE OR NYLON TWINE FROM ROOT BALL
 2. INSTALL TOP OF BALL 2" ABOVE FINISH GRADE
 3. SOAK ROOT BALL AND PLANT PIT IMMEDIATELY AFTER INSTALLATION
 4. 4" SAUCER WILL BE OUTSIDE OF BACKFILL.
 5. PROVIDE WEED BARRIER UNDER MULCH



BORDER LINE STEEL LANDSCAPE EDGING BY BORDER CONCEPTS,INC.
1/8" X 4" X 10' or 16', 3/16" THICK X 24" LONG STEEL STAKES, COLOR TO BE BLACK.
PH. 704-541-5509, borderconcepts.com



- NOTES:
1. REMOVE WIRE, NYLON TWINE OR CONTAINER FROM ROOT BALL.
 2. SCARIFY SIDES AND BOTTOM OF HOLE AS WELL AS THE ROOT BALL.
 3. INSTALL TOP OF BALL 2" ABOVE FINISH GRADE
 4. ROOT BALLS GREATER THAN 2' IN DIAMETER SHALL SIT ON MOUND OF UNDISTURBED SOIL TO PREVENT SETTLING.
 5. ROOT BALLS SMALLER THAN 2' MAY SIT ON COMPACTED SOIL MIXTURE.
 6. BACKFILL PIT WITH SPECIFIED PLANTING SOIL MIXTURE IN 8" LAYERS, HAND TAMP TO REMOVE VOIDS.
 7. WHEN 3/4 BACKFILLED, FILL WITH WATER
 8. AFTER BACKFILLING AND TAMPING FINAL LAYER, WATER AGAIN UNTIL NO MORE IS ABSORBED.
 9. 4" SAUCER WILL BE OUTSIDE OF BACKFILL.



GENERAL NOTES & SPECIFICATIONS

LAWN INSTALLATION: Lawn areas shall be fine graded to a smooth, positively draining slope, removing all stones over 3/4". Agricultural limestone shall be incorporated into the soil at a rate of 50 pounds per 1000 square feet. Apply specified seed at recommended rate. Straw mulch or hydromulch shall be used as deemed necessary by the Landscape Contractor and Landscape Architect. The Landscape Contractor shall be responsible to establish a full stand of grass and will repair any bare spots 1'- 0" square due to uneven seed distribution, drought or erosion.

SOD INSTALLATION: Sodded lawn areas shall be fine graded to a smooth, positively draining slope, removing all stones over 3/4". Sod shall be healthy, thick sod placed so that joints are butt tight. Staple as necessary. Sod shall be trimmed to match bed lines shown on plan. Startup fertilizer shall be incorporated into the soil at the manufacturer's recommended rate. Any area of sod that fails to root, settles or dies will be replace by the Landscape Contractor.

UTILITY LOCATION: The Landscape Contractor is responsible for contacting the utility locator service and is responsible for any damage done to utilities.

QUANTITIES Plant quantities are shown for the contractor's convenience only. PLANTS SHALL BE INSTALLED AS SHOWN. Contractor is responsible for confirming all quantities prior to bidding and installation.

BIDS In order to keep all bids standard, all bids are to have unit prices listed. The Owner has the option to delete any portion of the contract prior to signing the contract or beginning work. This will be a unit price contract.

PLANT QUALITY All plants shall be nursery grown, have a full habit of growth as is characteristic of that species, and shall be free of disease or insects. General plant quality shall be as specified in the "USA Standard for Nursery Stock" (published by the American Association of Nurserymen). Please contact the Landscape Architect if there is difficulty in locating a particular plant. If necessary, a substitute plant will be recommended by the Landscape Architect.

PLANTING AREA PREPARATION: Entire planting area shall be scarified and contain amended on-site soil or a soil mix to a depth of no less than 18". (see planting detail for more information.)

SETTING OF PLANTS The root ball of container grown plants shall be scarified in several places prior to planting. Plant shrubs and trees so that after initial settlement, the top root balls will be even with or slightly above the adjacent soil line. Around root balls, 1/2 of the original soil shall be removed from the planting hole and thoroughly mixed with the same quantity peat moss or well rotted, fine textured bark. (Only in areas where the existing soil is 100% fertile, loose topsoil (brown or black in color) can plants be placed directly in the soil with no amendments). PLANTINGS NOT DONE IN THIS MANNER SHALL BE REMOVED AND PROPERLY REPLANTED.

PREPARATION OF GROUND COVER AND SEASONAL COLOR BEDS : The existing soil in ground cover and seasonal color beds shall be thoroughly cultivated 6 inches deep, to a fine texture (no clods over 1/2") with a mechanical tiller. A plant mix of 60% screened shredded topsoil, 20% sand, and 20% well rotted sawdust or peat shall then be thoroughly incorporated into the existing soil with the tiller so that the soil mix (6" deep) is 1/2 original soil and 1/2 plant mix. All groundcover and seasonal color beds shall receive a 2" layer of fine textured, screened, pine bark mulch, or equal.

FERTILIZING Upon completion of plantings, all shrubs shall receive 1/6 cup of 16-4-8 fertilizer (50% of nitrogen slow release) evenly broadcast at the base of the plants. Trees shall receive 1/4 cup of 16-4-8 fertilizer (50% of nitrogen slow release) per inch of caliper. Ground cover beds shall be fertilized at the rate of 20 pounds of 16-4-8 (50% of nitrogen slow release) per 1000 square feet.

STAKING OF TREES Deciduous trees, 1 1/2" in caliper and over, and evergreen trees, 8' and taller shall be staked. Rubberhose to be used to cover the wire at the point of its contact with the tree. The Landscape Contractor is responsible for all wind damage to trees, (provided winds are less than 60mph) during the guarantee period, and may stake other trees (for his own protection) at his option. TRANSPLANTS All plant material to be transplanted shall be transplanted according to guidelines set by AAN standards. Transplanted material will not be guaranteed by the landscape contractor.

MULCHING As specified on planting list. A weed barrier shall be provided in all bed areas under mulch layer.

GRADING All final grading shall be the responsibility of the landscape contractor. The responsibility for any additional grading (if needed) shall be determined prior to bidding.

BACKFILL Landscape contractor to verify any additional backfill/topsoil needed prior to beginning work. A unit price for topsoil shall be included in all bid documents to allow for circumstances that might arise during installation.

STABILIZATION Landscape contractor shall ensure that all plantings are stabilized with ground covers, mulches or other approved materials to prevent soil erosion and allow rainwater infiltration.

CLEAN UP Final clean up of any disturbances occurring as a result of landscape operations shall be the responsibility of the landscape contractor.

INSPECTION It shall be the contractor's responsibility to provide for inspection of the plant material by the Landscape Architect prior to installation. All plant material will be inspected. Plants not conforming precisely to the plant list will not be accepted and shall be replaced at the contractor's own expense.

LICENSES The contractor will be responsible for obtaining all licenses necessary to complete the work.

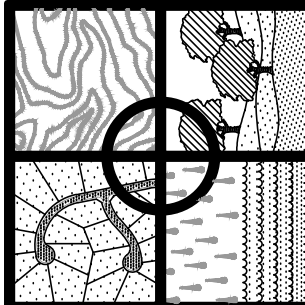
INSURANCE With the submittal of bid documents, the landscape contractor shall also submit a certificate of insurance for workman's compensation and a contractor's general liability. Contractors not providing evidence of such insurance will be ineligible to relieve the contract for the job

GUARANTEE All plant material and workmanship to be guaranteed for one year from the date of acceptance by the Owner. Plant replacement to occur only once. The contractor will not be responsible for defects resulting from neglect by the Owner, abuse or damage by others, or unusual phenomena or incidents beyond the landscape contractors control which result from natural causes such as floods, lightning, storms, freezing rains, or winds over 60 miles per hour, fire, vandalism or theft.

IRRIGATION Contractor to provide an automatic irrigation system, it will be the responsibility of the contractor to have the system designed and installed. Contractor to submit the irrigation design to the Landscape Architect for review and approval prior to installation.

SITE DESIGN, INC.

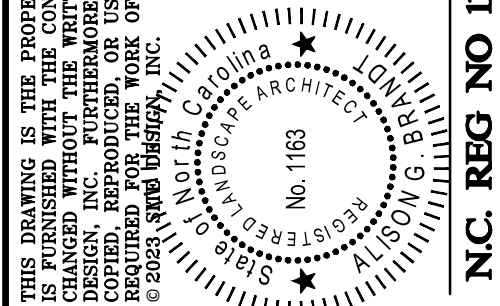
CIVIL ENGINEERS - SURVEYORS - LANDSCAPE ARCHITECTS



www.sitedesign-inc.com
225 ROCKY CREEK ROAD
GREENVILLE, SC 29615
PH: (864)271-0498

10. 9. 8. 7. 6. 5. 4. 3. 2. 1. NO.

THIS DRAWING IS THE PROPERTY OF SITE DESIGN, INC. AND IS LOANED TO THE CONTRACTOR FOR THE PROJECT ONLY. IT IS TO BE USED FOR THE PROJECT ONLY. IT IS NOT TO BE REPRODUCED, COPIED, OR TRANSMITTED IN ANY FORM OR BY ANY MEANS, ELECTRONIC OR MECHANICAL, INCLUDING PHOTOCOPYING, RECORDING, OR BY ANY INFORMATION STORAGE AND RETRIEVAL SYSTEM. WITHOUT THE WRITTEN PERMISSION OF SITE DESIGN, INC. © 2023 SITE DESIGN, INC.



NC. REG. NO. 1163

**SPINX
UPWARD ROAD**

**HENDERSON COUNTY
NORTH CAROLINA**

HORZ. SCALE: 1" = 30'
VERT. SCALE: N/A
DESIGNED BY: AGB
DRAWN BY: AGB
CHECKED BY: NH
DATE: 11/15/2023

S230494 BASE.dwg

**LANDSCAPE
DETAILS**

SHEET 15 OF 15

L200